

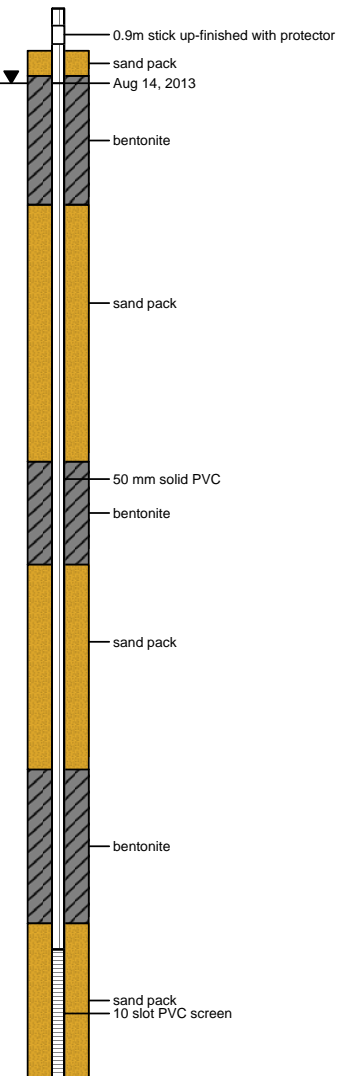
16277 Highway 10
 Surrey, BC

Project 497G

 Date Started : August 12, 2013
 Date Completed : August 12, 2013
 Hole Diameter : 203 mm
 Drilling Method : Hollow Stem
 Sampling Method : Grab

 Company Rep. : SB
 Lab Analysis : *indicates sent for analysis
 Drilled By : Downrite
 Logged By : SB

Depth in Meters	Surf. Elev.	USCS	GRAPHIC	DESCRIPTION	Lab Analysis	Sample No.	Soil Vapours ppm
0		SW		SAND, fine to medium grained and GRAVEL, brown, loose, dry (FILL)		17-1	-
0		ML		SILT (organic), topsoil, dark brown, moist peat-like below 0.61m		17-2	-
1				SILT, trace fine grained sand, trace mica-like content, grey, soft, wet			
2		ML		occasional lenses some fine sand, trace shell fragments, dark grey, below 3.66m			
3				4" to 6" fine sand seams from 4.88m to 5.64m			
4				some fine grained sand, some seashell fragments, dark grey from 5.49m to 7.62m			
5				some fine grained sand, some seashell fragments, dark grey from 8.54m to 9.15m			
6				SILT and CLAY, trace fine grained sand, occasional lenses with some fine grained sand, seashell fragments, grey, soft, wet			
7							
8							
9							
10							
11							
12				End of Hole			
13							
14							
15							
16							

 Monitoring Well
 AE13-MW17


Any use which a third party makes of this document, or any reliance on or decisions to be made based on it, are the responsibility of such third parties. CSAP/MOE are not responsible for any use or modification of this document. CSAP/MOE accept no responsibility for damages, if any, suffered by any third party as a result of decisions made or actions taken based on this document.