

BOREHOLE_NAME	BOREHOLE_ADDRESS	BOREHOLE_MUNICIPALITY	BOREHOLE_SITE_ID	LATITUDE	LONGITUDE	SUPPORTING_DOCUMENT	DATE_DRILLED
---------------	------------------	-----------------------	------------------	----------	-----------	---------------------	--------------

Please enter your borehole information below:

MW13-05	4040 Comox Logging Road	Courtenay, BC	14500	49.65478	-124.967335	MW13-05 BH LOG.pdf	2013-08-19
---------	----------------------------	---------------	-------	----------	-------------	--------------------	------------

BOREHOLE_NAME	TOTAL_BOREHOLE_DEPTH	BOREHOLE_TOC_ELEVATION	BOREHOLE_SURFACE_ELEVATION	TOP_OF_SCREEN	BOTTOM_OF_SCREEN	FROM_UNIT_DEPTH	TO_UNIT_DEPTH	UNIT_DESCRIPTION	UNIT_NUMBER	HYDRAULIC_CONDUCTIVITY	DEPTH_TO_WATER_BELOW_TOC	DEPTH_TO_WATER_BELOW_SURFACE
Please enter your borehole lithology information below:												
MW13-05	4.11 m	34.16 m	34.2			0	0.61	0.61 Fill	1			
				1.98	4.12			4.11 Silty sand	2	3.60E-06	2.68	2.72

Logo

McElhanney

BORING NUMBER MW13-05

PAGE 1 OF 1

CLIENT SCG Resources Inc.

PROJECT NUMBER 2211-47168-1 Task 2001

DATE STARTED 8/19/13 COMPLETED 8/19/13

DRILLING CONTRACTOR Drillwell Enterprises

DRILLING METHOD Solid Stem Auger

LOGGED BY TF CHECKED BY BSW

NOTES _____

PROJECT NAME Stage 2 Preliminary Site Investigation / DSI

PROJECT LOCATION 4040 Comox Logging Road Courtenay BC

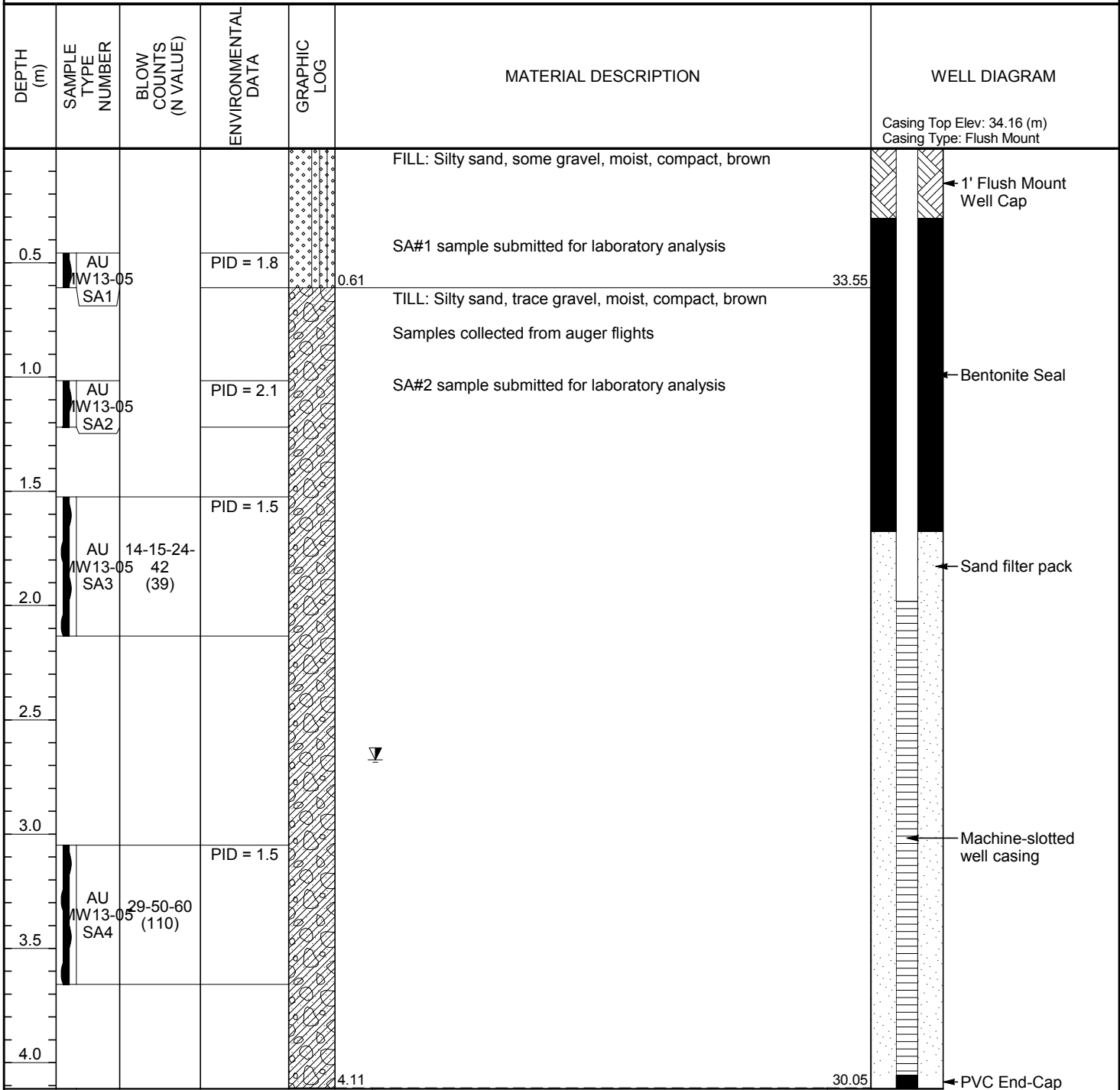
GROUND ELEVATION 34.16 m HOLE SIZE 150 mm

GROUND WATER LEVELS:

AT TIME OF DRILLING ---

AT END OF DRILLING ---

▼ AFTER DRILLING 2.68 m / Elev 31.49 m



ENVIRONMENTAL BH SCG SOIL LOGS.GPJ GINT STD CANADA LAB.GDT 1/31/14

For Environmental Purposes Only