

LOG OF TEST HOLE

TEST HOLE NO.
MW12-3

LOCATION: 4801/4805 South Access Road,
Chetwynd, BC
N 6173119.82, E 586596.92

CLIENT: Parkland Industries Ltd.
PROJECT: Stage 1 and 2 PSI and DSI

TOP OF HOLE ELEV: 618.3 m (est.)

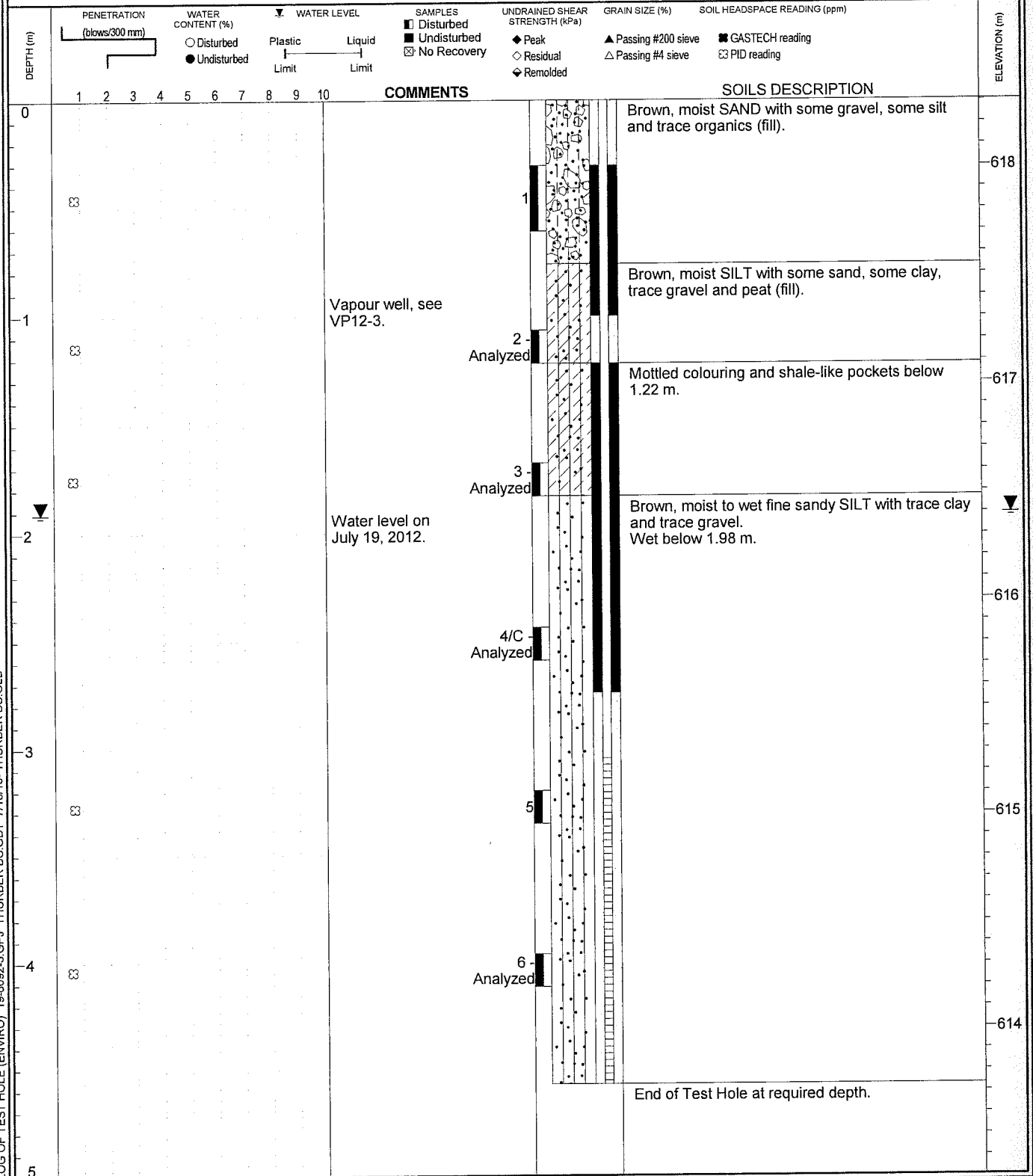
DATE: February 7, 2012

METHOD: Solid Stem Auger

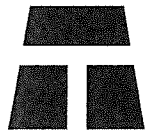
DRILLING CO.: Beck Drilling and Environmental Services Ltd. **THURBER**

FILE NO.: 19-6092-3B

INSPECTOR: KLM



LOG OF TEST HOLE (ENVIRO) 19-6092-3.GPJ THURBER BC.GDT 7/18/13 - THURBER BC.GLB



THURBER ENGINEERING LTD.

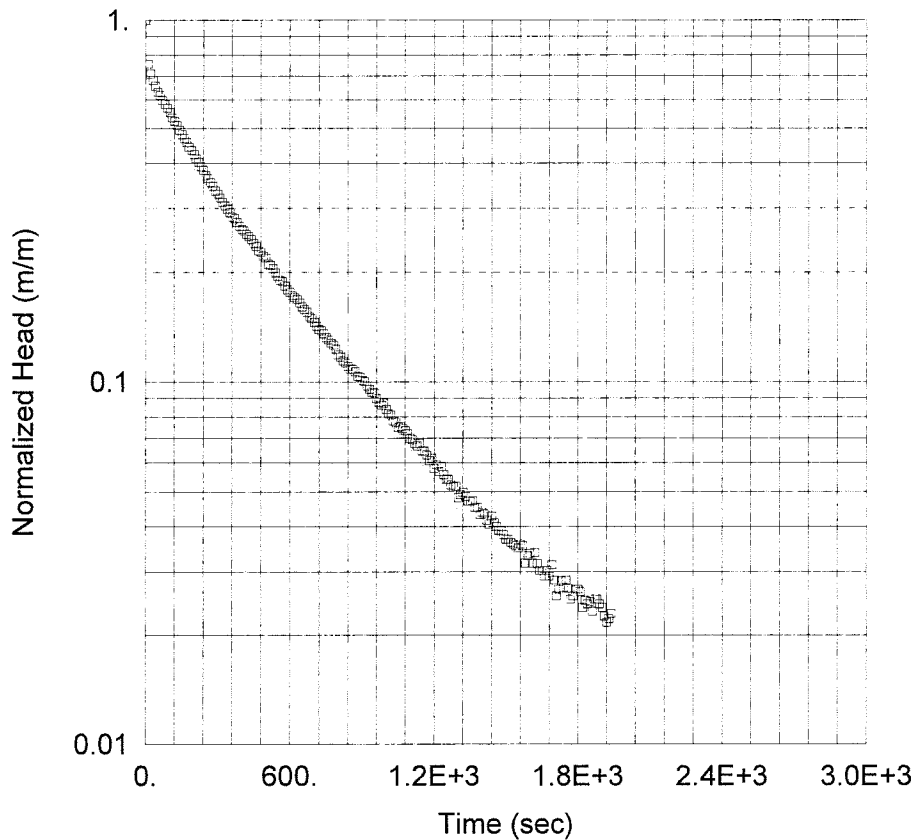
MW12-3 - BAILOWN TEST

Prepared By:
Thurber Engineering Ltd.

Prepared For:
Parkland Industries Ltd.

Project:
19-6092-3B

Location:
Chetwynd, BC



SOLUTION

Aquifer Model: Unconfined
Solution Method: Bouwer-Rice

$K = 8.6E-7$ m/sec $y_0 = 0.31$ m

AQUIFER DATA

Saturated Thickness: 8 m Anisotropy Ratio (K_z/K_r): 1.

WELL DATA (MW12-3)

Initial Displacement: 0.5442 m
Static Water Column Height: 2.66 m
Total Well Penetration Depth: 2.66 m
Screen Length: 1.5 m
Casing Radius: 0.0254 m
Well Radius: 0.0762 m