

# LOG OF TEST HOLE

TEST HOLE NO.  
**11-BH134**

**LOCATION:** See Figure 3  
N 5431374, E 493136

**CLIENT:** AQUILINI INVESTMENT GROUP INC.  
**PROJECT:** TFN RESIDENTIAL DEVELOPMENT

**TOP OF HOLE ELEV:** 3.7 m (est.)

**METHOD:** Solid Stem Auger

**DATE:** April 25, 2011

**DRILLING CO.:** On-Track Drilling Inc.



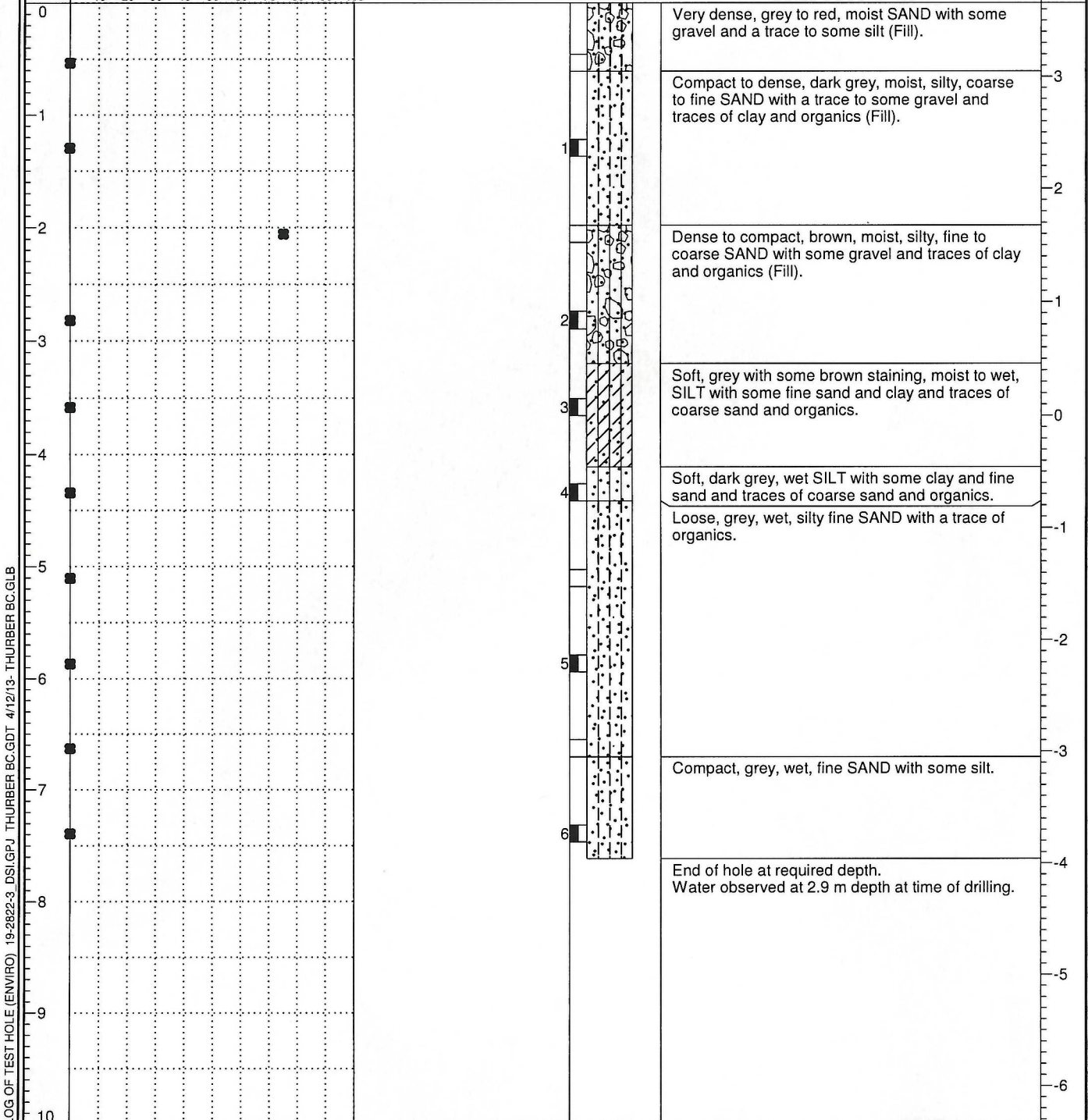
**FILE NO.:** 19-2822-3

**INSPECTOR:** CC

DEPTH (m)	PENETRATION (blows/300 mm)	WATER CONTENT (%)	WATER LEVEL	SAMPLES	UNDRAINED SHEAR STRENGTH (kPa)	GRAIN SIZE (%)	SOIL HEADSPACE READING (ppm)	ELEVATION (m)
		○ Disturbed ● Undisturbed	Plastic Limit Liquid Limit	■ Disturbed □ Undisturbed ⊠ No Recovery	◆ Peak ◇ Residual ◊ Remolded	▲ Passing #200 sieve △ Passing #4 sieve	■ GASTECH reading ⊞ PID reading	

**COMMENTS**

**SOILS DESCRIPTION**



LOG OF TEST HOLE (ENVIRO) 19-2822-3 DSI.GPJ THURBER BC.GDT 4/12/13 THURBER BC.GLB