

Log of Monitoring Well: MW15-4A



Project Name/No: 1090 Lougheed / 1412-003.04

Drilling Company: Badger Daylighting Inc. / Mud Bay Drilling Co. Ltd.

Client: Edgar Development Corporation

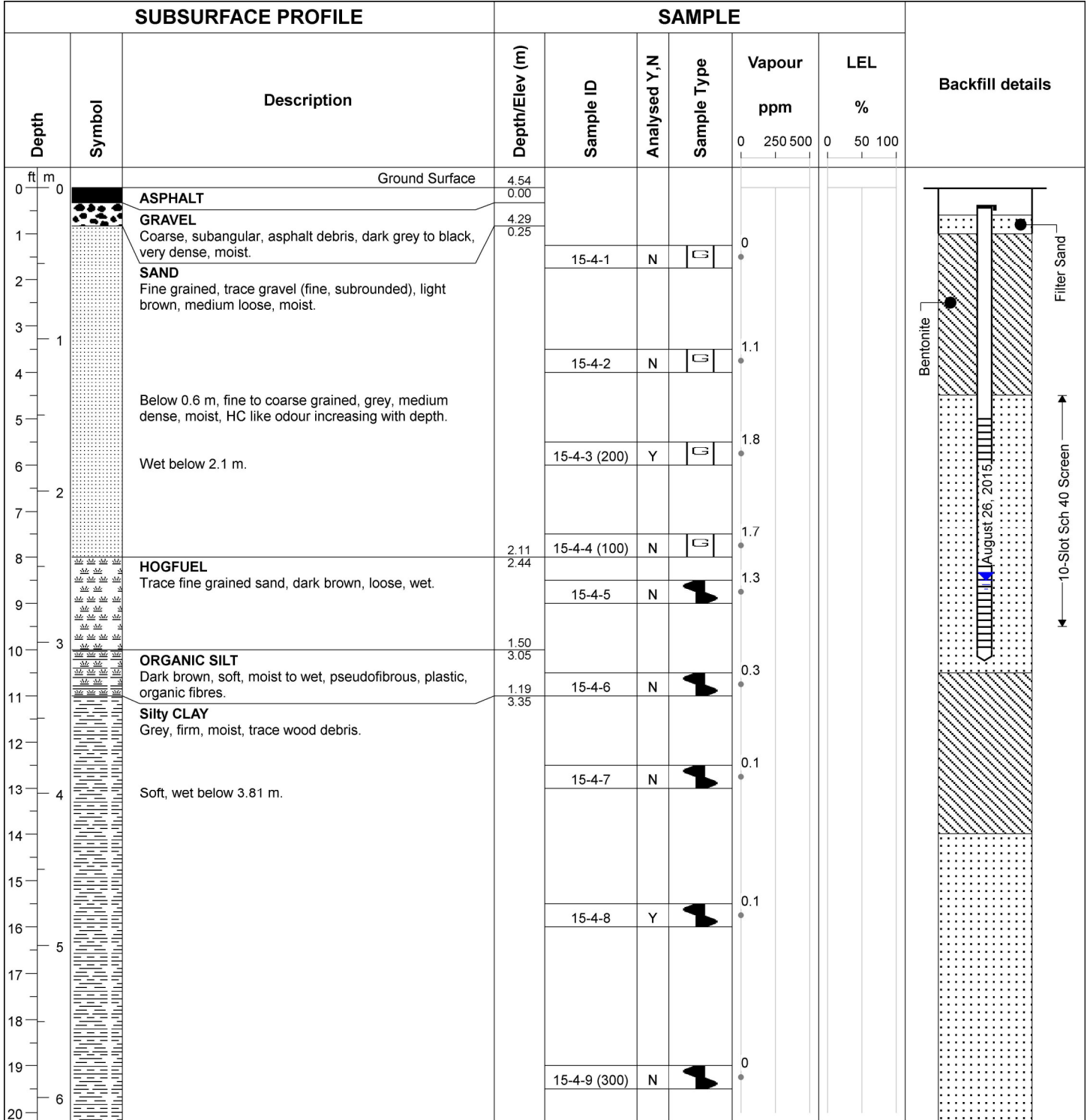
Drilling Method: Hydrovac / Solid Stem Auger

Date Drilled: August 20, 2015

Logged by: JC / JH

Site Location: 1090 Lougheed Hwy., Coquitlam, BC

Sheet: 1 of 2



Well location: South of Loading Ramp	Well casing diameter: 0.05 m	Depth of well (TOC): 3.05m
Depth to water level (TOC): 2.59	Well casing material: PVC	Well Elevation (TOC): 4.501
Date of water level: August 26, 2015	Well screen slot size: 10 Slot Schedule 40	Ground Elevation: 4.545 m
Borehole diameter: 0.20 m	Well screen interval (bgs): 1.5-3.0 m	

Log of Monitoring Well: MW15-4A



Project Name/No: 1090 Lougheed / 1412-003.04

Drilling Company: Badger Daylighting Inc. / Mud Bay Drilling Co. Ltd.

Client: Edgar Development Corporation

Drilling Method: Hydrovac / Solid Stem Auger

Date Drilled: August 20, 2015

Logged by: JC / JH

Site Location: 1090 Lougheed Hwy., Coquitlam, BC

Sheet: 2 of 2

SUBSURFACE PROFILE			SAMPLE					Backfill details		
Depth	Symbol	Description	Depth/Elev (m)	Sample ID	Analysed Y,N	Sample Type	Vapour ppm		LEL %	
							0 250 500	0 50 100		
21										
22				15-4-10	N		0.1			
23	7									
24				15-4-11	N		0			
25										
26	8			15-4-12	N		0.3			
27										
28										
29				15-4-13	N		0.2			
30	9	Increased silt content, firm to soft at 9.1 m.	-4.60							
31		End of Log	9.14							
32		<p><i>Any use which a third party makes of this document, or any reliance on or decisions to be made based on it are the responsibility of such third parties. CSAP/MOE are not responsible for any use or modification of this document. CSAP/MOE accept no responsibility for damages, if any, suffered by any third party as a result of decisions made or actions taken based on this document.</i></p>								
33	10									
34										
35										
36	11									
37										
38										
39	12									
40										

Well location: South of Loading Ramp	Well casing diameter: 0.05 m	Depth of well (TOC): 3.05m
Depth to water level (TOC): 2.59	Well casing material: PVC	Well Elevation (TOC): 4.501
Date of water level: August 26, 2015	Well screen slot size: 10 Slot Schedule 40	Ground Elevation: 4.545 m
Borehole diameter: 0.20 m	Well screen interval (bgs): 1.5-3.0 m	