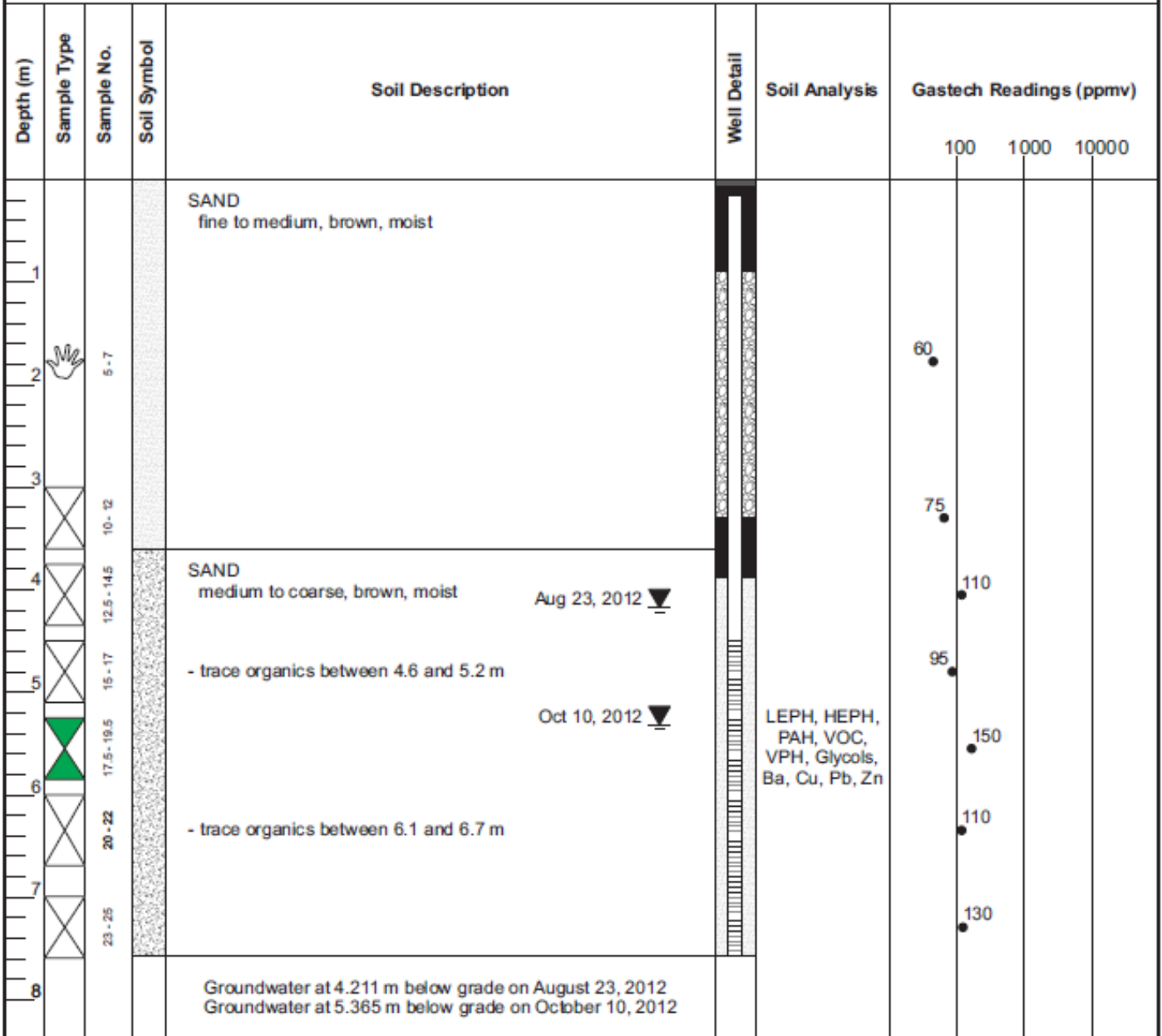


# BOREHOLE BH1

Drilling contractor: Kel Drilling  
 Drilling equipment: B-61 mobile drill rig  
 Drilling method: Hollow stem  
 Core / casing: 8 inch outside diameter (203 mm)  
 Backfill type: N20 sand, cuttings, bentonite  
 Survey method: Laser level  
 Logged by: CWD  
 Coordinates: 10 U 0686730 5618384

Start date: August 21, 2012  
 Finish date: August 21, 2012  
 Final depth of hole from grade: 7.521 m  
 Ground elevation: 346 m  
 Top of monitoring well elevation: 345.950 m  
 Groundwater elevation: 341.789 m (August 23, 2012)  
 Well screen size: 010 slot Sch40 PVC (51 mm diameter)  
 Depth of screen below grade: 4.473 m - 7.521 m



GDA 062  
**GD Assessments Inc.**

Drawn by: CWD  
 Oct 2012

This drawing is for conceptual purposes only. Actual locations may vary and not all features are shown.

Preliminary Site Investigation  
 Former Super Save Gas Station  
 280 Tranquille Road, Kamloops, BC