



Client
Shell Canada Products

Borehole No. : 12-75

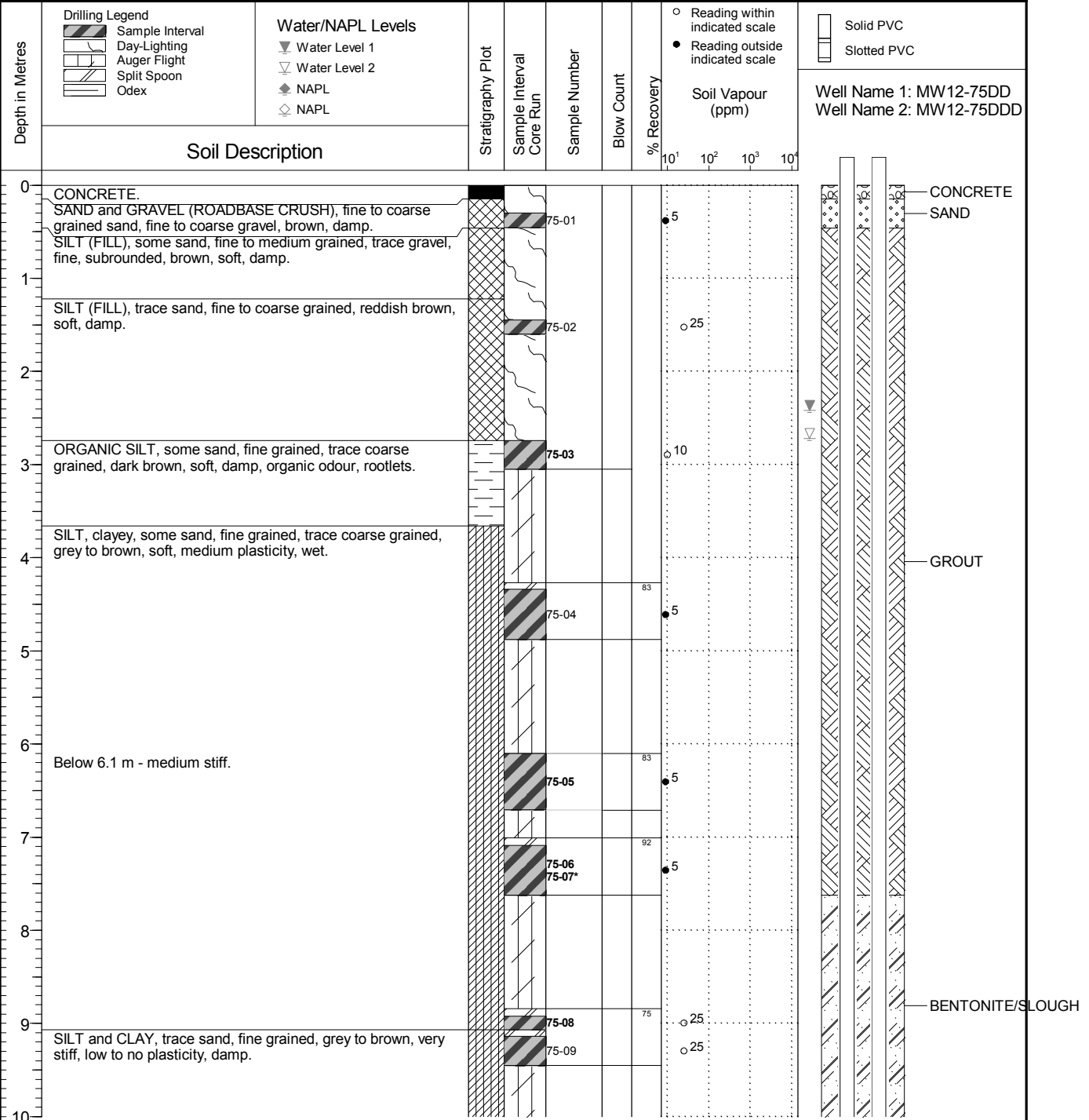
Location
465 Highway 97, 100 Mile House, BC

PAGE 1 OF 2

Drilling Contractor Spruce City/Geotech Drilling
Drilling Method Hydrovac/Air Rotary
Borehole Dia. (m) 0.08
Pipe/Slotted Pipe Dia. (m) 0.05/0.05

Date Monitored 2012 02 15
Ground Surface Elev. (m) 930.481
Top of Casing Elev. (m) 931.480 , 931.514
Northing: 379.827 Easting: 1230.025

Project Number: 132814
Borehole Logged By: JM
Date Drilled: 2012 02 02
Log Typed By: NN



NOTES

Bolded sample denotes sample analyzed.
*Sample 75-07 is a blind field duplicate of sample 75-06.
Sample 75-11 is a grab sample from air rotary cuttings.
Borehole day-lighted to a depth of 3.1 m on February 1, 2012.
MW12-75DD is a 0.02 m diameter pipe.

Print Date: 2015.12.17 QA1: JM Date Approved: 2015.04.27

Any use which a third party makes of this document, or any reliance on or decisions to be made based on it, are the responsibility of such third parties. CSAP/MOE are not responsible for any use or modification of this document. CSAP/MOE accept no responsibility for damages, if any, suffered by any third party as a result of decisions made or actions taken based on this document.



Client
Shell Canada Products

Borehole No. : 12-75

Location
465 Highway 97, 100 Mile House, BC

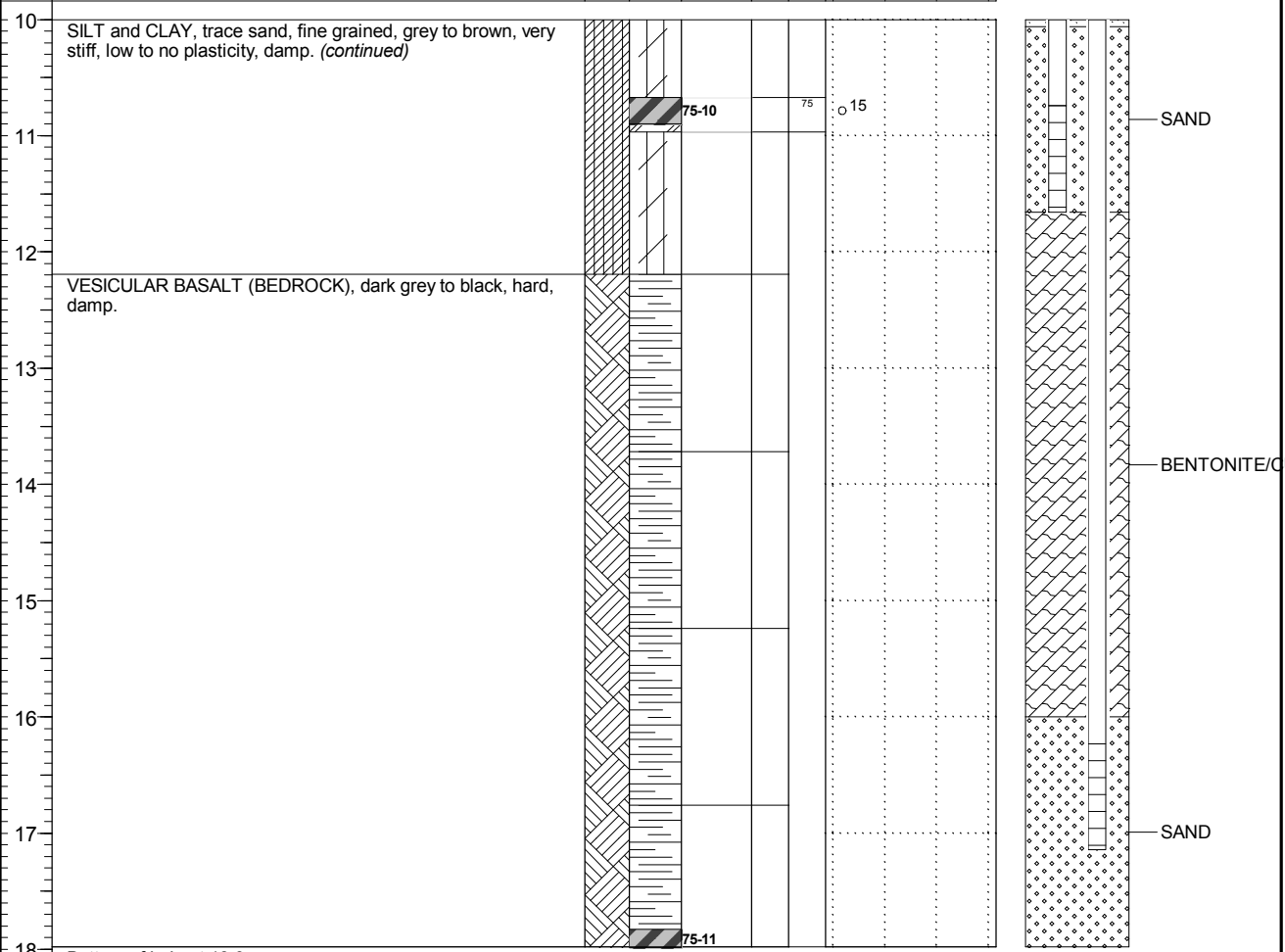
PAGE 2 OF 2

Drilling Contractor Spruce City/Geotech Drilling
Drilling Method Hydrovac/Air Rotary
Borehole Dia. (m) 0.08
Pipe/Slotted Pipe Dia. (m) 0.05/0.05

Date Monitored 2012 02 15
Ground Surface Elev. (m) 930.481
Top of Casing Elev. (m) 931.480 , 931.514
Northing: 379.827 Easting: 1230.025

Project Number: 132814
Borehole Logged By: JM
Date Drilled: 2012 02 02
Log Typed By: NN

| | | | | | | | | | |
|-----------------|--|--|-------------------|-----------------------------|---------------|------------|------------|---|---|
| Depth in Metres | Drilling Legend Sample Interval Day-Lighting Auger Flight Split Spoon Odex | Water/NAPL Levels Water Level 1 Water Level 2 NAPL NAPL | Stratigraphy Plot | Sample Interval Core Run | Sample Number | Blow Count | % Recovery | ○ Reading within indicated scale ● Reading outside indicated scale | Solid PVC Slotted PVC |
| | Soil Description | | | | | | | Soil Vapour (ppm) | Well Name 1: MW12-75DD Well Name 2: MW12-75DDD |



Bottom of hole at 18.0 m.

NOTES
 Bolded sample denotes sample analyzed.
 *Sample 75-07 is a blind field duplicate of sample 75-06.
 Sample 75-11 is a grab sample from air rotary cuttings.
 Borehole day-lighted to a depth of 3.1 m on February 1, 2012.
 MW12-75DD is a 0.02 m diameter pipe.

Print Date: 2015.12.17 QA1: JM Date Approved: 2015.04.27

Any use which a third party makes of this document, or any reliance on or decisions to be made based on it, are the responsibility of such third parties. CSAP/MOE are not responsible for any use or modification of this document. CSAP/MOE accept no responsibility for damages, if any, suffered by any third party as a result of decisions made or actions taken based on this document.