



Client :
Shell Canada Products

Borehole No. : 12-20

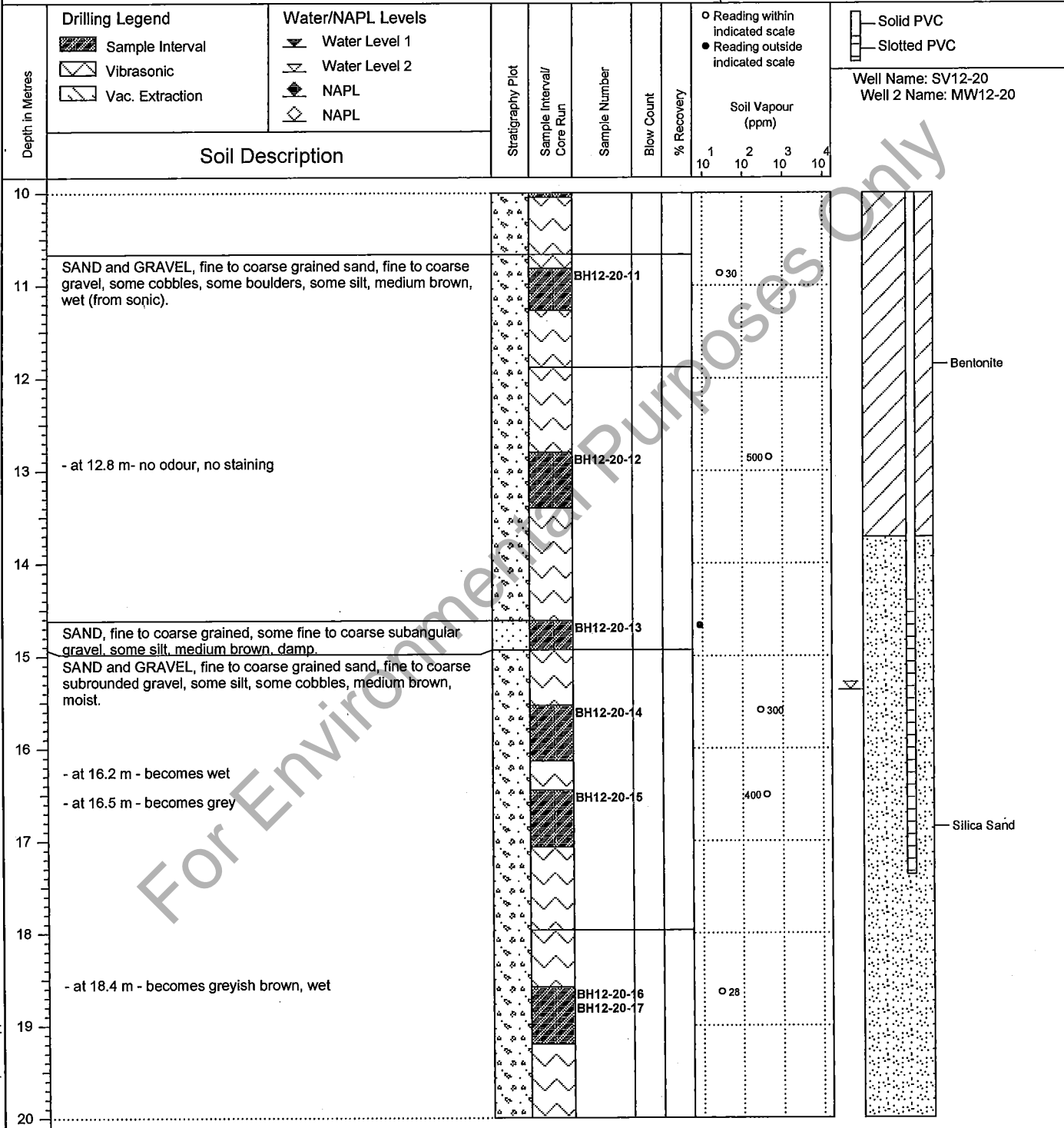
Location :
500 CNR Right-Of-Way, Ashcroft, BC

(Page 2 of 3)

Drilling Contractor : Badger Daylighting/Sonic Drilling
Drilling Method : Hydrovac/Vibratory Sonic
Borehole Dia. (m) : 0.15
Pipe/Slotted Pipe Dia. (m) : 0.03, 0.03

Date Monitored : 2012 09 11
Ground Surf Elev. (m) : 95.399
Top of Casing Elev. (m) : 95.287, 95.271

Project Number : 131608
Borehole Logged By : IPC
Date Drilled : 2012 04 17
Log Typed By : SW



...Continued

Notes:

Bolded sample denotes sample analyzed.
BH12-20-5 is a blind field duplicate of BH12-20-4.
BH12-20-17 is a blind field duplicate of BH12-20-16.
Hydrovac on 2012 04 16.
SV12-20 (1" [2.5cm] well); MW12-20 (2" [5.1cm] well).



Client :
Shell Canada Products

Borehole No. : 12-20

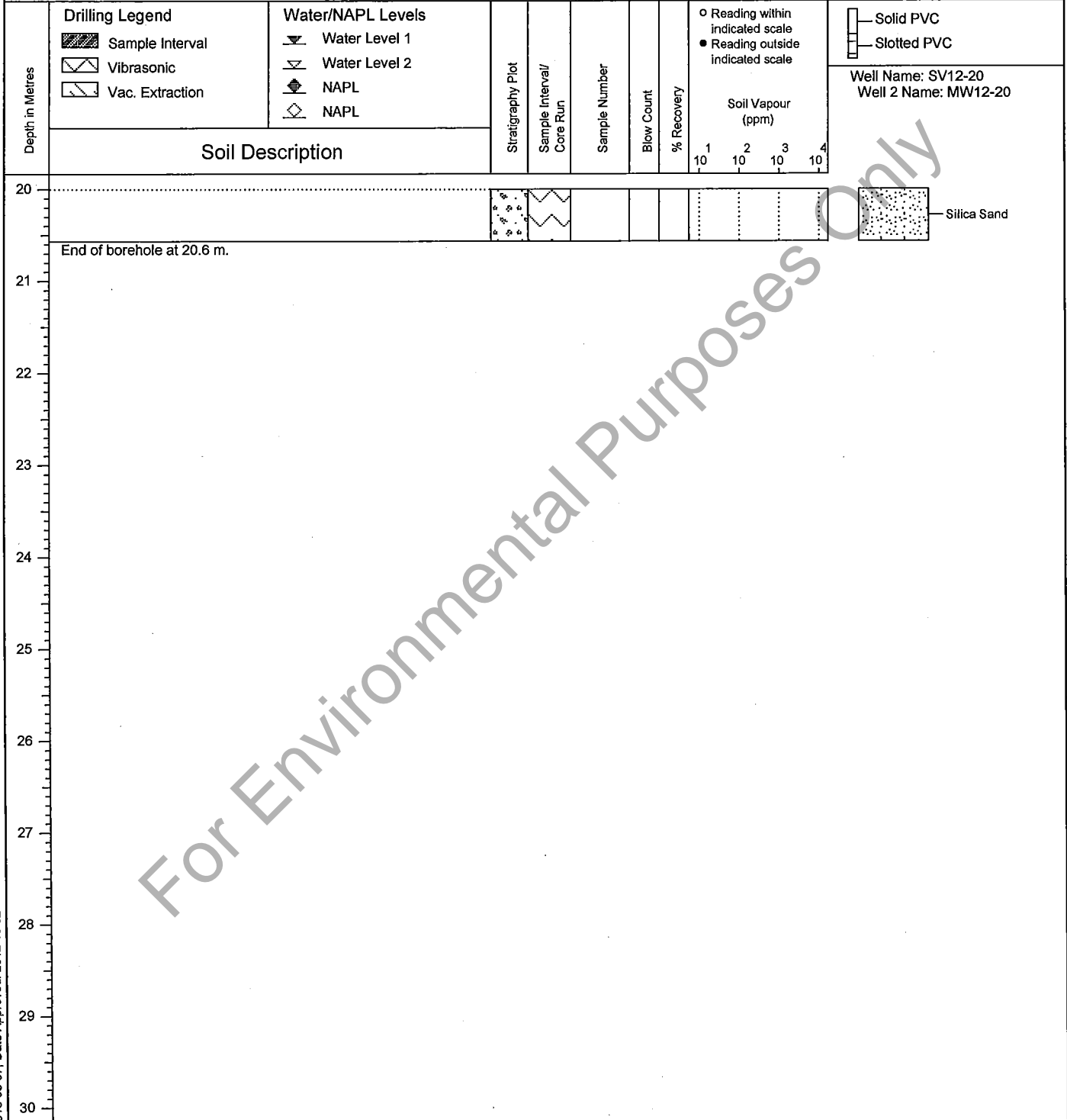
Location :
500 CNR Right-Of-Way, Ashcroft, BC

(Page 3 of 3)

Drilling Contractor: Badger Daylighting/Sonic Drilling
 Drilling Method : Hydrovac/Vibratory Sonic
 Borehole Dia. (m) : 0.15
 Pipe/Slotted Pipe Dia. (m): 0.03, 0.03

Date Monitored : 2012 09 11
 Ground Surf Elev. (m) : 95.399
 Top of Casing Elev. (m) : 95.287, 95.271

Project Number : 131608
 Borehole Logged By : IPC
 Date Drilled : 2012 04 17
 Log Typed By : SW



For Environmental Purposes Only

Notes:
 Bolded sample denotes sample analyzed.
 BH12-20-5 is a blind field duplicate of BH12-20-4.
 BH12-20-17 is a blind field duplicate of BH12-20-16.
 Hydrovac on 2012 04 16.
 SV12-20 (1" [2.5cm] well); MW12-20 (2" [5.1cm] well).