



<b>FIELD REVIEW REPORT</b>		DATE: <b>SEPTEMBER 15, 2019</b>	ISLANDER PROJECT No.: <b>2087</b>
REPORT No: <b>52</b>	STAGE OF CONSTRUCTION: <b>Landfill Closure</b>	WEATHER: <b>Sun 17°C</b>	PAGE: 1 OF 4
PROJECT: <b>Cobble Hill Landfill Closure Construction</b>			
TO: <b>CHH</b>	ATTENTION: <b>Marty Block</b>		
CC:			

**Semi Monthly Reporting Requirements SPO MO1701**

Per **SPO MO1701 Section 4:**

*Commencing in the month that closure activities commence pursuant to the approved Updated Final Closure Plan,*

*the Named Parties must submit semi-monthly status reports, certified by a Qualified Professional. The reports must include the status of closure activities, inspection results, quality control and testing results, photographs which support/document the quality control and testing results, inspection reports and other supporting documents as needed to fully document all stages and components of the closure activities.*

- Closure activities have not commenced
- Quality control and testing has not commenced
- PEA
  - Liner appears to be in good condition, with no noticeable changes since the date of our last inspection
- Soil Management Area (SMA)
  - All works are in good condition and no noticeable changes since the date of our last inspection
- Contact Water Containment Pond
  - All works are in good condition and no noticeable changes since the date of our last inspection
- cut-off ditch upland of PEA
  - All works are in good condition, ditch still performing well
- Pictures documenting current Site status are shown below

*Status reports must be submitted by the 15th and 30th of each month (or the next business day thereafter if the 15th or 30th of the month is not a business day) until closure activities have been completed. Submissions must be made electronically to the following email inbox: [EnvironmentalCompliance@gov.bc.ca](mailto:EnvironmentalCompliance@gov.bc.ca).*

- Submitted September 15, 2019



# ISLANDER

ENGINEERING

**Per Condition 10 of June 26, 2019 Letter Re: Second Amended Spill Prevention Order MO1701, dated June 29, 2017 – Final Closure Plan**

*The semi-monthly status reports submitted pursuant to section 4 of the SPO must also include:*

*Identification of any deviations from the quality management plan and the construction activities work plan and implementation schedule referenced in conditions 3 and 4 of this approval;*

- There have been no deviations this reporting period.

*The results of inspections, repairs, quality controls and testing, in accordance with the quality management plan referenced in condition 5 of this approval;*

- Activities related to closure did not occur this reporting period.

*The planned activities (and associated timing) for the next reporting cycle; and*

- There are no Site activities planned for the next reporting cycle.

*The environmental monitoring program laboratory reports and tabulated results*

- Sampling was not conducted this reporting period.

*Copies of all soil relocation documentation as required in condition 7 of this approval.*

- Soil relocation did not occur this reporting period

Total Leachate Collected = 2.22 m<sup>3</sup>  
Total Leachate Stored = 10.07 m<sup>3</sup>  
Total Leachate Transported = 0.00 m<sup>3</sup>

ISLANDER ENGINEERING LTD.

Mike Achtem, P.Eng



<b>FIELD REVIEW REPORT</b>		DATE: <b>SEPTEMBER 15, 2019</b>	ISLANDER PROJECT No.: <b>2087</b>
REPORT No: <b>52</b>	STAGE OF CONSTRUCTION: <b>Landfill Closure</b>	WEATHER: <b>Sun 17°C</b>	PAGE: <b>3 of 4</b>



**SMA - looking south**



**SMA - looking north**



**Contact water containment Pond**



**Leak and leachate detection works**



<b>FIELD REVIEW REPORT</b>		DATE: <b>SEPTEMBER 15, 2019</b>	ISLANDER PROJECT No.: <b>2087</b>
REPORT No: <b>52</b>	STAGE OF CONSTRUCTION: <b>Landfill Closure</b>	WEATHER: <b>Sun 17°C</b>	PAGE: <b>4 of 4</b>



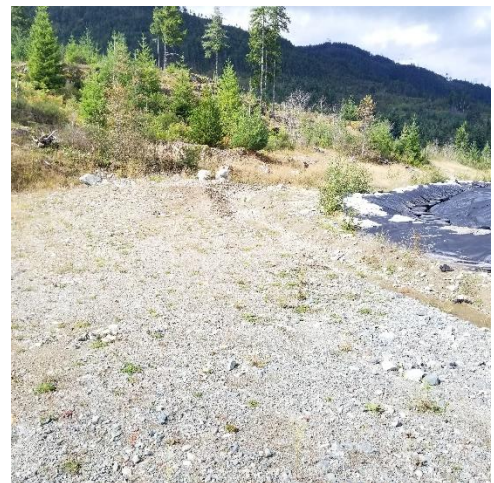
**PEA – liner near NE corner**



**PEA– NW corner**



**PEA north face**



**PEA ditch**