



| | | | |
|---|--|-------------------------------|-----------------------------------|
| FIELD REVIEW REPORT | | DATE: OCTOBER 30, 2019 | ISLANDER PROJECT No.: 2087 |
| REPORT No: 55 | STAGE OF CONSTRUCTION: Landfill Closure | WEATHER: Sun 8°C | PAGE: 1 OF 4 |
| PROJECT: Cobble Hill Landfill Closure Construction | | | |
| TO: CHH | ATTENTION: Marty Block | | |
| CC: | | | |

Semi Monthly Reporting Requirements SPO MO1701

Per **SPO MO1701 Section 4:**

Commencing in the month that closure activities commence pursuant to the approved Updated Final Closure Plan,

the Named Parties must submit semi-monthly status reports, certified by a Qualified Professional. The reports must include the status of closure activities, inspection results, quality control and testing results, photographs which support/document the quality control and testing results, inspection reports and other supporting documents as needed to fully document all stages and components of the closure activities.

- Closure activities have not commenced
- Quality control and testing has not commenced
- PEA
 - Liner appears to be in good condition, with no noticeable changes since the date of our last inspection
- Soil Management Area (SMA)
 - All works are in good condition and no noticeable changes since the date of our last inspection
- Contact Water Containment Pond
 - All works are in good condition and no noticeable changes since the date of our last inspection
- cut-off ditch upland of PEA
 - All works are in good condition, ditch still performing well
- Pictures documenting current Site status are shown below

Status reports must be submitted by the 15th and 30th of each month (or the next business day thereafter if the 15th or 30th of the month is not a business day) until closure activities have been completed. Submissions must be made electronically to the following email inbox: EnvironmentalCompliance@gov.bc.ca.

- Submitted October 30, 2019



Per Condition 10 of June 26, 2019 Letter Re: Second Amended Spill Prevention Order MO1701, dated June 29, 2017 – Final Closure Plan

The semi-monthly status reports submitted pursuant to section 4 of the SPO must also include:

Identification of any deviations from the quality management plan and the construction activities work plan and implementation schedule referenced in conditions 3 and 4 of this approval;

- There have been no deviations this reporting period.

The results of inspections, repairs, quality controls and testing, in accordance with the quality management plan referenced in condition 5 of this approval;

- Activities related to closure did not occur this reporting period.

The planned activities (and associated timing) for the next reporting cycle; and

- Site drilling of shallow bedrock wells.

The environmental monitoring program laboratory reports and tabulated results

- Sampling was not conducted this reporting period.

Copies of all soil relocation documentation as required in condition 7 of this approval.

- Soil relocation did not occur this reporting period

Total Leachate Collected= 0.68 m³

Total Leachate Stored= 13.83 m³

Total Leachate Transported= 0 m³

ISLANDER ENGINEERING LTD.

Mike Achtem, P.Eng



| | | | |
|----------------------------|--|-------------------------------|-----------------------------------|
| FIELD REVIEW REPORT | | DATE: OCTOBER 30, 2019 | ISLANDER PROJECT No.: 2087 |
| REPORT No: 55 | STAGE OF CONSTRUCTION: Landfill Closure | WEATHER: Cloud 9°C | PAGE: 3 of 4 |



SMA - looking south



SMA – looking north



Contact water containment Pond



Leak and leachate detection works



FIELD REVIEW REPORT

DATE: **OCTOBER 30, 2019**

ISLANDER PROJECT No.: **2087**

REPORT No: **55**

STAGE OF CONSTRUCTION: **Landfill Closure**

WEATHER: **Cloud 9°C**

PAGE: **4 of 4**



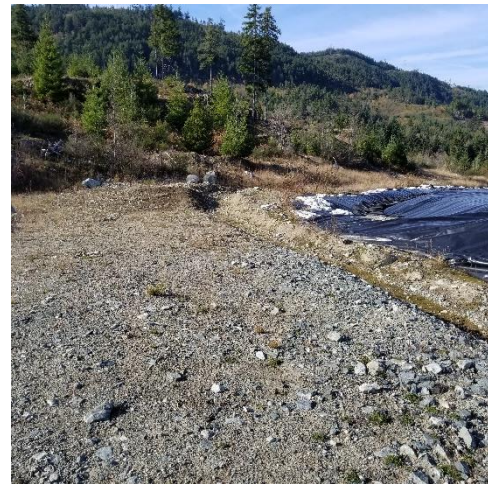
PEA – liner near NE corner



PEA– NW corner



PEA north face



PEA ditch