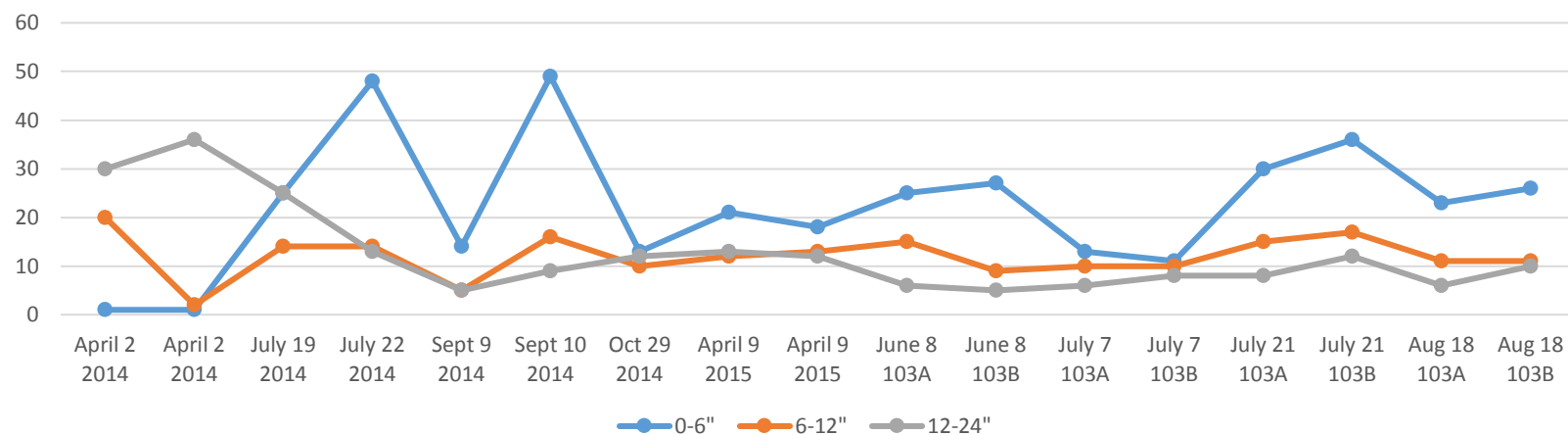


H.S. Jansen Field 103 Soil Nitrate Test History August 21, 2015



April 2, 2014 - first soil samples	April 2 2014	1	20	30
	April 2 2014	1	2	36
July 19, 2014 - pre manure application after 1st cut alfalfa before manure	July 19 2014	25	14	25
July 22, 2014 - post manure application after 1st cut.	July 22 2014	48	14	13
Sept 9, 2014 - pre manure application after 2nd cut alfalfa	Sept 9 2014	14	5	5
Sept 10, 2014 - post manure application after 2nd cut.	Sept 10 2014	49	16	9
Oct 29, 2014 - post 3rd cut soil test for going into winter.	Oct 29 2014	13	10	12
April 9 2015 - Spring soil test pre crop growth starting	April 9 2015	21	12	13
<i>Note: No manure application after 1st cut</i>	April 9 2015	18	13	12
June 8 2015 - pre manure after 1st cut soil nitrate test	June 8 103A	25	15	6
	June 8 103B	27	9	5
July 7 2015 - pre manure after 2nd cut soil nitrate test	July 7 103A	13	10	6
	July 7 103B	11	10	8
July 21 2015 - post manure after 2nd cut soil nitrate test	July 21 103A	30	15	8
	July 21 103B	36	17	12
August 18 2015 - pre manure after 3rd cut soil nitrate test	Aug 18 103A	23	11	6
	Aug 18 103B	26	11	10