

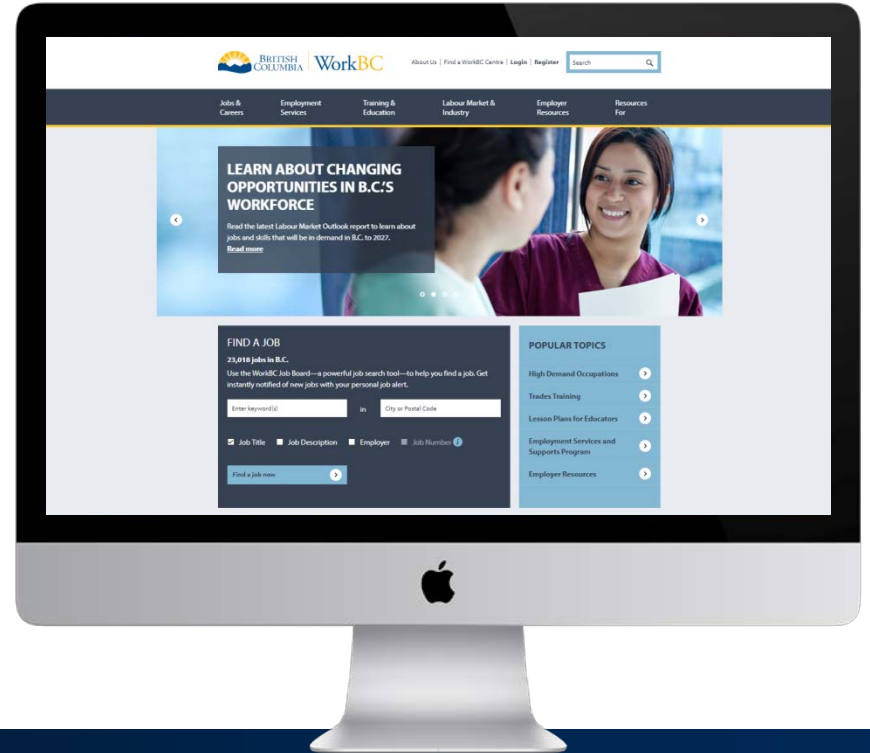


Workforce Innovation and Division
Responsible for Skills Training

WorkBC.ca

Provincial government's access point to the world of work in B.C.

- One key goal: to help all British Columbians to successfully navigate B.C.'s labour market
- Labour Market Outlook and High Demand Occupations
- Career Toolkit
- WorkBC Job Board (23,000+ jobs) & Community Jobs API



Topic: Workforce Development

“Assisting youth and adults in acquiring knowledge and developing skills beyond basic literacy, numeracy, and life skills, which are part of the basic education program, and behaviors to find legitimate jobs, establish viable self-employment ventures, and stay employed and productive in a changing economy.”

What is Find Your Fit?

- Experiential learning: hands-on occupational activities from different parts of the economy
- Activity stations are paired with relevant Labour Market Information
- Launched May 2014; has become integral part of WorkBC.ca outreach programming

Activity and Information Stations

Activity Stations:

- Heavy Duty Mechanic/Millwright
- Air Pilot
- Auto Service Technician
- General Practitioner
- Psychiatrist
- Physiotherapist
- Nurse
- Occupational Therapist
- Sonographer
- Carpenter
- Electrical Technologist
- Computer Programmer
- Social Worker
- Computer and Information Systems Manager
- Network Technician
- Software Engineer
- Web Developer

Labour Market Information Kiosks:

- Cooks/Chefs
- Property Administrator
- Professional Occupations in Advertising, Marketing and Public Relations
- HR Professional
- Purchasing Agent and Officers
- Civil Engineer
- Early Childhood Educator
- Plumber



Activation Types

- Find Your Fit full activation: 15-16 stations, large enough to fill a school gymnasium; 45 minute interactions; 4 hours set up/take down.
- Find Your Fit booth activation: 3-5 stations; ideal for smaller spaces; faster interactions
- Career Education Day: 7-8 stations; training and education partner booths; industry and employer partner booths; support organization booths

Who participates?

- Find Your Fit: students in grades 5-10
- Career Education Days: students in grades 10-12
- Since launch, Find Your Fit has had direct interactions with:
 - 210,290 youth
 - 63,006 adults
 - 273,296 total interactions



Where have we been?

100 Mile House
Abbotsford
Aggasiz
Aldergrove
Armstrong
Ashcroft
Blueriver
Burnaby
Burns Lake
Canim Lake
Campbell River
Castlegar
Chetwynd
Chilliwack
Clearwater
Cloverdale
Coquitlam
Courtenay
Cranbrook
Creston
Cumberland
Dawson Creek
Dease Lake
Delta

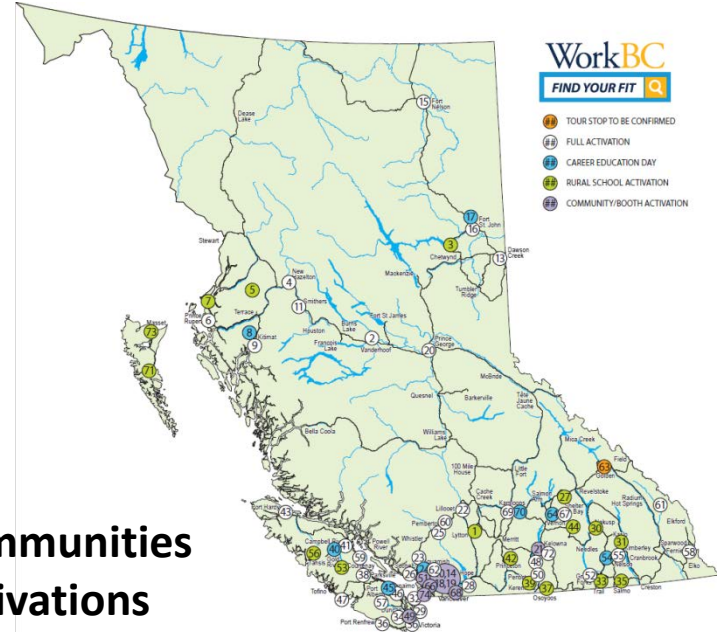
Duncan
Esquimalt
Fernie
Fort St. John
Fort St. James
Fort Nelson
Fraser Lake
Gibsons
Gold River
Golden
Grand Forks
Hagensborg
Hagwilget
Masset
Queen Charlotte
Hazelton
Houston
Hope
Hudson's Hope
Invermere
Kamloops
Kaslo
Kelowna
Keremeos

Kitimat
Kimberley
Lake Cowichan
Langley
Lax Kw'alaams
Lillooet
Lumby
Lytton
Mackenzie
Maple Ridge
Masset
Mcbride
Merritt
Mission
Moricetown
Mt Currie
Nakusp
Nanaimo
Nelson
New Aiyansh
New Westminster
North Vancouver
Oliver
Osoyoos

Pemberton
Penticton
Pitt Meadows
Point Grey
Port Alberni
Port Coquitlam
Port Hardy
Port McNeill
Powell River
Prince George
Prince Rupert
Princeton
Qualicum
Queen Charlotte
Quesnel
Revelstoke
Richmond
Saanich
Salmo
Salmon Arm
Saltspring Island
Sechelt
Sicamous
Sidney

Smithers
Sooke
Squamish
Summerland
Surrey
Tahsis
Terrace
Trail
Tumbler Ridge
Ucluelet
Valemount
Vancouver
Vanderhoof
Vernon
Victoria
West Vancouver
Whistler
White Rock
Williams Lake

115 Communities
313 Activations



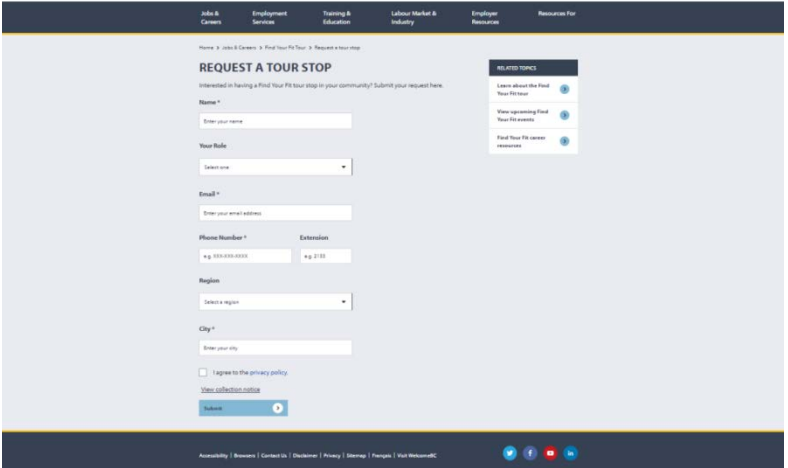
Outcome: Big Data insights for Youth

- “How many job openings are expected by the time I graduate? Where will they be? What skills are in-demand?”
- Students are connected with regionalized labour market information that helps them make informed decisions, as well as resources like EducationPlanner to help them get qualified



Visit WorkBC.ca/FindYourFit

- Photo gallery
- View calendar of upcoming events
- Request a tour stop for your community



The screenshot displays the WorkBC website interface for requesting a tour stop. At the top, the WorkBC logo and navigation menu are visible. The main content area features a form titled "REQUEST A TOUR STOP" with the following fields and options:

- Name ***: A text input field for the user's name.
- Your Role**: A dropdown menu for selecting a role.
- Email ***: A text input field for the user's email address.
- Phone Number ***: Two input fields for the phone number, labeled "Phone Number" and "Extension".
- Region**: A dropdown menu for selecting a region.
- City ***: A text input field for the user's city.
- I agree to the privacy policy**
- [View collection notice](#)
- Submit**: A blue button to submit the request.

On the right side of the form, there is a "RELATED TOPICS" section with three links:

- [Learn about the Find Your Fit tour](#)
- [View upcoming Find Your Fit events](#)
- [Find Your Fit career resources](#)

At the bottom of the page, there is a footer with links for Accessibility, Careers, Contact Us, Disclaimer, Privacy, Sitemap, and Work Without COVID, along with social media icons for Facebook, Twitter, YouTube, and LinkedIn.

Video

Thank you



davin.greenwell@gov.bc.ca