



PART I: Education and Child Care Capital Planning

Overview for 2027/28

This Overview Supersedes All Previous Editions.

*Any future updates to the Overview will be highlighted in **red text**.*

*This Overview is current as of **April 23, 2026**.*

Ministry of Infrastructure
Education & Child Care Capital Branch

Table of Contents

Five-year education capital plans	3
Funding Programs	3
Major Capital Programs	3
Minor Capital Programs	3
Child Care Capital Programs.....	4
Annual Facility Grant.....	4
Submission Deadlines	4
Board Resolutions and Bylaws.....	4
Fact sheets and other resources	5
Long-Range Facilities Plan (LRFP)	5
Cost-sharing.....	5
Enrolment projections and facility records	6
Approval Process (Figures A – D)	6

Part I: Education & Child Care Capital Planning – Overview for 2027/28

Five-year education capital plans

Boards of education play a key role in B.C.'s capital planning system. Each year they develop five-year capital plans, setting out their respective districts' current and expected needs.

Capital plans are submitted to the Province through the online MyCAPS system (<https://caps.crm3.dynamics.com/>). Districts are then informed which projects are approved and what steps to take to get them implemented.

Funding programs

Projects are funded through major, minor and child care capital programs, with most minor and child care projects completed within the coming fiscal year. These have a straightforward, one-step approval process.

Major projects have a two- or three-step approval process, which include business case and potentially a concept plan.

For details, see approval process section below.

Major capital programs cover:

- Seismic mitigation program (SMP)
- School expansion program (EXP)
- School replacement program (REP)
- Rural districts program (RDP - building demolition and school consolidation)

Minor capital programs cover:

- School enhancement program (SEP)
- Carbon neutral capital program (CNCP)
- Bus acquisition program (BUS)
- Playground equipment program (PEP)
- Food infrastructure program (FIP)
- Building envelope program (BEP)

Child care capital programs cover:

- School age care on school grounds program (SASG)

The SASG program supports the development of net new child-care spaces in school facilities. It's focused on before- and after-school care.

Annual Facility Grant (AFG)

All boards of education receive an AFG, announced in mid-March. The grant is a lump sum, managed over the course of the year to meet emergent needs and address facility issues not covered by other capital programs.

AFG and SEP funding can be used for safety upgrades to existing schools.

Submission deadlines

Before submitting their capital plans, districts are encouraged to review them with Ministry of Infrastructure staff. For information, contact your [Regional Director or Planning Officer](#).

May 15, 2026

- School Age Care on School Grounds (SASG)
- Annual Facility Grant (AFG)

June 30, 2026

- all major capital programs

September 29, 2026

- all minor capital programs

Board resolutions and bylaws

Boards approve their capital plan submissions by passing resolutions – one each for major, minor and child care submissions. These are submitted through MyCAPS along with the five-year capital plan.

Once they receive approval from the Province, boards pass a capital bylaw covering all projects for the fiscal year and upload it to MyCAPS.

AFG does not require a board resolution or capital bylaw.

Fact sheets and other resources

The Ministry of Infrastructure provides a number of online resources to simplify submissions, including templates for board resolutions and capital plan bylaws - [Publications & Resources](#) section.

For high priority projects (proposed for year 1-3), MyCAPS has fact sheet templates for:

- expansion and replacement requests
- seismic requests
- demolition requests, and
- child-care requests.

Long-Range Facilities Plan (LRFP)

All districts are expected to maintain an LRFP to guide capital asset management. It should cover a minimum of 10 years and incorporate factors affecting enrolment, such as:

- local land-use planning
- residential development
- community growth or decline
- demographic changes.

Any school proposed for a capital project should be identified in the LRFP as required for current and future educational programming. Relevant sections of the LRFP may be requested to support specific funding submissions. Guidelines are found here: [Publications & Resources](#) section.

Cost-sharing

With the exception of lowest-cost seismic mitigation options, districts are required to share costs for major capital projects. Amounts are determined case by case, based on a district's financial capacity and local priorities.

Note: a district's ability to cost-share does not influence project prioritization. Contribution amounts are finalized through business case development.

Enrolment projections and facility records

For projects to be considered for funding, 10-year enrolment projections for each school must be entered into MyCAPS by June 29, 2026.

Districts must also review and update their facility records in MyCAPS by June 29, 2026. For example, facilities that are closed should have zero enrolment.

Approval process

Once all the capital submissions are reviewed and the new provincial budget is tabled, each district will receive a Capital Budget Outcomes and Next Steps letter identifying:

- major capital projects supported for business case development
- minor capital and child-care projects approved for procurement and funding
- next steps required for each new project.

Next steps may include:

- acquiring a site for EXP projects
- preparing a concept plan or business case for SMP, EXP, REP and RPD projects
- proceeding to design, tender and construction for SEP and CNCP projects
- implementing approved scopes for FIP and child care projects
- coordinating with BC Housing on BEP projects.

Figure A process for SEP, CNCP, BUS, PEP, FIP, BEP and SASG:

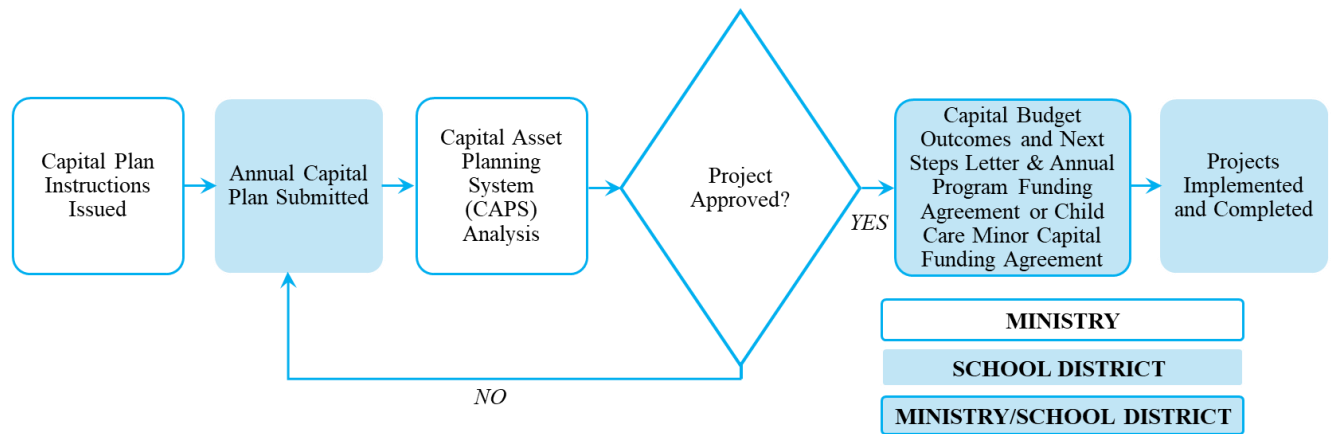


Figure B process for AFG:

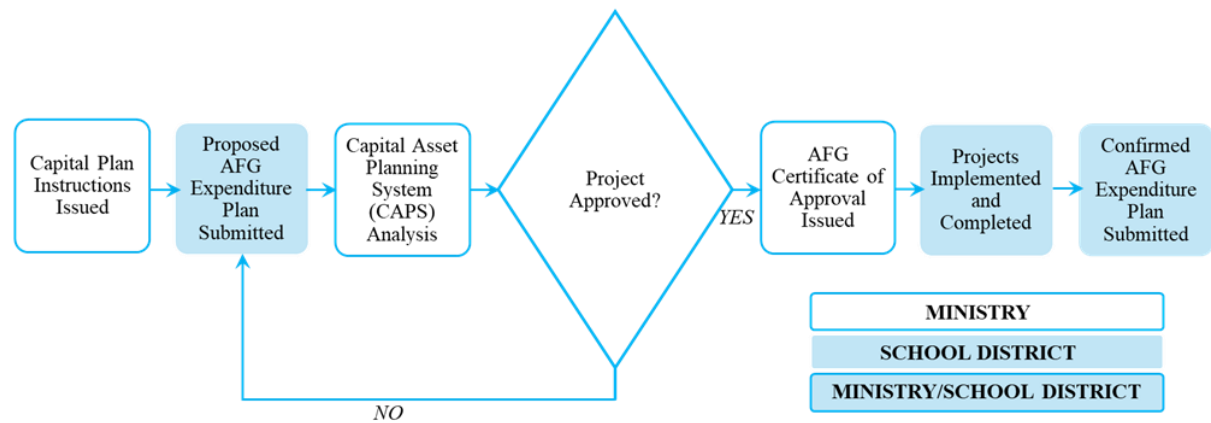


Figure C two-stage major capital programs process (Project Definition Report/Business Case):

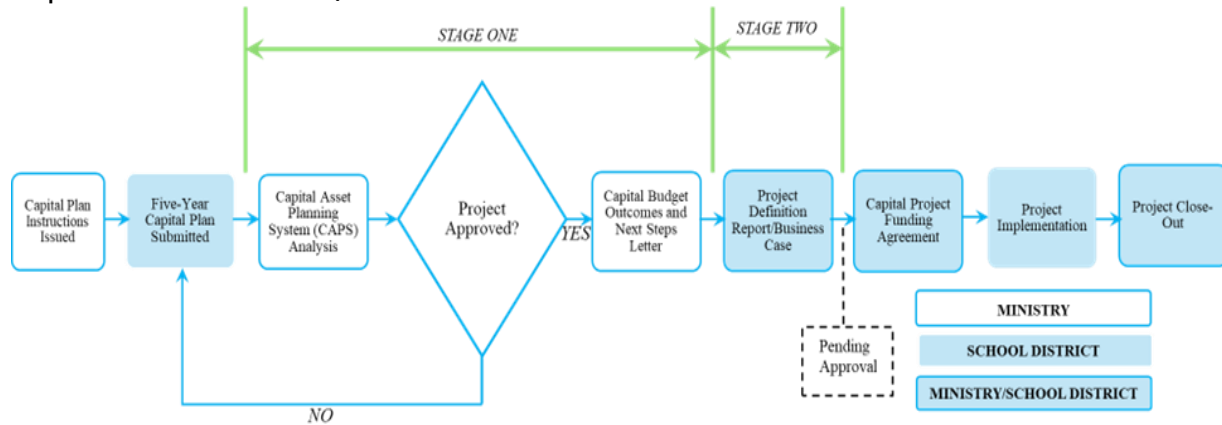


Figure D three-stage major capital programs process (Concept Plan and Project Definition Report/Business Case):

