

Student Transitions to BC Public Post-Secondary Institutions - 2013/14 Province - Public and Independent Schools Combined

Preface

This report includes data from the BC Ministry of Education (MED) K-12 system combined with BC post-secondary data compiled by the Student Transitions Project (STP).

Definitions used are in accordance with MED public reporting data definitions and consequently figures may differ from those stated within STP reports.

This report includes all graduates, using a definition that is more broad than the “eligible to graduate” definition used in many STP reports. It also includes all non-graduates, both those who transitioned to a BC public post-secondary institution (PSI) and those who did not.

In the 2010/11 and 2011/12 reports, students who leave the BC school system in Kindergarten or in Grades 1 to 7 are no longer included in the counts of non-graduates. This removes younger students who are more likely to have moved to a school in another jurisdiction than they are to have dropped out. The main effect of this change, compared to the 2009/10 report, is a drop in the counts of non-graduates who do not transition to a PSI, since very few of those last seen in these lower grades do transition to a PSI.

A problem was identified in previous STP data where some students in developmental program areas were mapped to post-secondary education (PSE) study levels. This means that the reported counts of students in developmental level programs were low while the counts of students in PSE level programs were inflated. The underlying definition has now been changed. The effect of this change, compared to the 2009/10 report, is an increase in the counts of students in developmental level programs and a decrease in the counts of students in PSE level programs (pages 8 and 13).

Student Transitions to BC Public Post-Secondary Institutions - 2013/14 Province - Public and Independent Schools Combined

Grade 12 Graduates by Post-Secondary Institution Entry Year

K-12 Graduation Year	Post-Secondary Entry Year					Total Grade 12 Graduates (#)
	2009/10 (# and %)	2010/11 (# and %)	2011/12 (# and %)	2012/13 (# and %)	2013/14 (# and %)	
2008/09	24811 (51.9%)	4981 (10.4%)	2165 (4.5%)	1276 (2.7%)	868 (1.8%)	47826
2009/10		25160 (50.9%)	5076 (10.3%)	2176 (4.4%)	1230 (2.5%)	49445
2010/11			25046 (51.0%)	4918 (10.0%)	1908 (3.9%)	49115
2011/12				25206 (50.3%)	4760 (9.5%)	50067
2012/13					24905 (49.7%)	50117

K-12 Non-Graduates by Post-Secondary Institution Entry Year

Year of Last Enrolment in the K-12 System	Post-Secondary Entry Year					Total Non-Graduates (#) ¹
	2009/10 (# and %)	2010/11 (# and %)	2011/12 (# and %)	2012/13 (# and %)	2013/14 (# and %)	
2008/09	2889 (11.9%)	1034 (4.3%)	709 (2.9%)	510 (2.1%)	380 (1.6%)	24229
2009/10		3214 (12.1%)	1052 (3.9%)	716 (2.7%)	560 (2.1%)	26636
2010/11			3404 (12.1%)	1138 (4.0%)	766 (2.7%)	28212
2011/12				3264 (11.3%)	1076 (3.7%)	28837
2012/13					3204 (11.1%)	28977

¹ Over time, the number of non-graduates may decrease as these students complete graduation requirements and are counted as part of the graduate population.

Student Transitions to BC Public Post-Secondary Institutions - 2013/14 Province - Public and Independent Schools Combined

Grade 12 Graduates by Demographic Group

Demographic Group	Grade 12 Graduates of School Year		Year of Transition to a Post-Secondary Institution							
	2009/10		2010/11		2011/12		2012/13		2013/14	
	(#)	(%)	(#)	(%)	(#)	(%)	(#)	(%)	(#)	(%)
All Students	49445	100	25160	51	5076	10	2176	4	1230	2
Female	24703	100	12946	52	2503	10	1039	4	566	2
Male	24742	100	12214	49	2573	10	1137	5	664	3
Aboriginal	3581	100	1316	37	429	12	245	7	146	4
ELL	709	100	398	56	69	10	19	3	16	2
Special Needs	3597	100	1713	48	345	10	155	4	92	3

K-12 Non-Graduates by Demographic Group

Demographic Group	K-12 Non-Graduates of Year of Last Enrolment		Year of Transition to a Post-Secondary Institution							
	2009/10 ¹		2010/11		2011/12		2012/13		2013/14	
	(#)	(%)	(#)	(%)	(#)	(%)	(#)	(%)	(#)	(%)
All Students	26636	100	3214	12	1052	4	716	3	560	2
Female	13677	100	1690	12	545	4	353	3	289	2
Male	12959	100	1524	12	507	4	363	3	271	2
Aboriginal	3616	100	565	16	253	7	181	5	150	4
ELL	863	100	77	9	30	3	16	2	13	2
Special Needs	2372	100	316	13	104	4	65	3	50	2

¹ Over time, the number of non-graduates may decrease as these students complete graduation requirements and are counted as part of the graduate population.

Student Transitions to BC Public Post-Secondary Institutions - 2013/14 Province - Public and Independent Schools Combined

Grade 12 Graduates Entering Community Colleges

Demographic Group	Grade 12 Graduates of School Year		Year of Transition to a Community College ¹							
	2009/10		2010/11		2011/12		2012/13		2013/14	
	(#)	(%)	(#)	(%)	(#)	(%)	(#)	(%)	(#)	(%)
All Students	49445	100	7704	16	2357	5	1058	2	601	1
Female	24703	100	3997	16	1223	5	559	2	316	1
Male	24742	100	3707	15	1134	5	499	2	285	1
Aboriginal	3581	100	629	18	247	7	140	4	87	2
ELL	709	100	82	12	24	3	8	1	12	2
Special Needs	3597	100	585	16	162	5	85	2	44	1

K-12 Non-Graduates Entering Community Colleges

Demographic Group	K-12 Non-Graduates of Year of Last Enrolment		Year of Transition to a Community College ¹							
	2009/10 ²		2010/11		2011/12		2012/13		2013/14	
	(#)	(%)	(#)	(%)	(#)	(%)	(#)	(%)	(#)	(%)
All Students	26636	100	1843	7	653	2	440	2	313	1
Female	13677	100	1023	7	349	3	235	2	170	1
Male	12959	100	820	6	304	2	205	2	143	1
Aboriginal	3616	100	369	10	174	5	120	3	87	2
ELL	863	100	47	5	19	2	8	1	4	0
Special Needs	2372	100	216	9	67	3	44	2	30	1

¹ In recent years, numerous BC post-secondary institutions have changed their name and sector designation. Because of these changes, and to ensure consistency over time, each institution is reported under its most recent name and sector designation.

² Over time, the number of non-graduates may decrease as these students complete graduation requirements and are counted as part of the graduate population.

Student Transitions to BC Public Post-Secondary Institutions - 2013/14 Province - Public and Independent Schools Combined

Grade 12 Graduates Entering Institutes

Demographic Group	Grade 12 Graduates of School Year		Year of Transition to an Institute ¹							
	2009/10		2010/11		2011/12		2012/13		2013/14	
	(#)	(%)	(#)	(%)	(#)	(%)	(#)	(%)	(#)	(%)
All Students	49445	100	1304	3	553	1	300	1	223	0
Female	24703	100	270	1	104	0	70	0	45	0
Male	24742	100	1034	4	449	2	230	1	178	1
Aboriginal	3581	100	88	2	34	1	30	1	19	1
ELL	709	100	22	3	11	2	5	1	2	0
Special Needs	3597	100	84	2	39	1	18	1	21	1

K-12 Non-Graduates Entering Institutes

Demographic Group	K-12 Non-Graduates of Year of Last Enrolment		Year of Transition to an Institute ¹							
	2009/10 ²		2010/11		2011/12		2012/13		2013/14	
	(#)	(%)	(#)	(%)	(#)	(%)	(#)	(%)	(#)	(%)
All Students	26636	100	448	2	140	1	98	0	92	0
Female	13677	100	158	1	47	0	26	0	31	0
Male	12959	100	290	2	93	1	72	1	61	0
Aboriginal	3616	100	38	1	18	0	22	1	24	1
ELL	863	100	4	0	4	0	2	0	1	0
Special Needs	2372	100	7	0	8	0	6	0	7	0

¹ In recent years, numerous BC post-secondary institutions have changed their name and sector designation. Because of these changes, and to ensure consistency over time, each institution is reported under its most recent name and sector designation.

² Over time, the number of non-graduates may decrease as these students complete graduation requirements and are counted as part of the graduate population.

Student Transitions to BC Public Post-Secondary Institutions - 2013/14 Province - Public and Independent Schools Combined

Grade 12 Graduates Entering Research-Intensive Universities

Demographic Group	Grade 12 Graduates of School Year		Year of Transition to a Research-Intensive University ¹							
	2009/10		2010/11		2011/12		2012/13		2013/14	
	(#)	(%)	(#)	(%)	(#)	(%)	(#)	(%)	(#)	(%)
All Students	49445	100	9103	18	586	1	148	0	73	0
Female	24703	100	4896	20	322	1	74	0	39	0
Male	24742	100	4207	17	264	1	74	0	34	0
Aboriginal	3581	100	158	4	20	1	6	0	5	0
ELL	709	100	181	26	11	2	0	0	1	0
Special Needs	3597	100	628	17	36	1	10	0	6	0

K-12 Non-Graduates Entering Research-Intensive Universities

Demographic Group	K-12 Non-Graduates of Year of Last Enrolment		Year of Transition to a Research-Intensive University ¹							
	2009/10 ²		2010/11		2011/12		2012/13		2013/14	
	(#)	(%)	(#)	(%)	(#)	(%)	(#)	(%)	(#)	(%)
All Students	26636	100	138	1	33	0	33	0	34	0
Female	13677	100	77	1	21	0	17	0	16	0
Male	12959	100	61	0	12	0	16	0	18	0
Aboriginal	3616	100	10	0	0	0	3	0	1	0
ELL	863	100	5	1	3	0	3	0	4	0
Special Needs	2372	100	2	0	1	0	1	0	1	0

¹ In recent years, numerous BC post-secondary institutions have changed their name and sector designation. Because of these changes, and to ensure consistency over time, each institution is reported under its most recent name and sector designation.

² Over time, the number of non-graduates may decrease as these students complete graduation requirements and are counted as part of the graduate population.

Student Transitions to BC Public Post-Secondary Institutions - 2013/14 Province - Public and Independent Schools Combined

Grade 12 Graduates Entering Teaching-Intensive Universities

Demographic Group	Grade 12 Graduates of School Year		Year of Transition to a Teaching-Intensive University ¹							
	2009/10		2010/11		2011/12		2012/13		2013/14	
	(#)	(%)	(#)	(%)	(#)	(%)	(#)	(%)	(#)	(%)
All Students	49445	100	7049	14	1580	3	670	1	333	1
Female	24703	100	3783	15	854	3	336	1	166	1
Male	24742	100	3266	13	726	3	334	1	167	1
Aboriginal	3581	100	441	12	128	4	69	2	35	1
ELL	709	100	113	16	23	3	6	1	1	0
Special Needs	3597	100	416	12	108	3	42	1	21	1

K-12 Non-Graduates Entering Teaching-Intensive Universities

Demographic Group	K-12 Non-Graduates of Year of Last Enrolment		Year of Transition to a Teaching-Intensive University ¹							
	2009/10 ²		2010/11		2011/12		2012/13		2013/14	
	(#)	(%)	(#)	(%)	(#)	(%)	(#)	(%)	(#)	(%)
All Students	26636	100	785	3	226	1	145	1	121	0
Female	13677	100	432	3	128	1	75	1	72	1
Male	12959	100	353	3	98	1	70	1	49	0
Aboriginal	3616	100	148	4	61	2	36	1	38	1
ELL	863	100	21	2	4	0	3	0	4	0
Special Needs	2372	100	91	4	28	1	14	1	12	1

¹ In recent years, numerous BC post-secondary institutions have changed their name and sector designation. Because of these changes, and to ensure consistency over time, each institution is reported under its most recent name and sector designation.

² Over time, the number of non-graduates may decrease as these students complete graduation requirements and are counted as part of the graduate population.

Student Transitions to BC Public Post-Secondary Institutions - 2013/14 Province - Public and Independent Schools Combined

Grade 12 Graduates Enrolled in Post-Secondary within 3 Years

Grade 12 Graduates by Post-Secondary Program Area¹ (within 3 years of graduating K-12)

Grade 12 Graduation Year	Developmental Level		PSE Level		Total	
	(#)	(%)	(#)	(%)	(#)	(%)
2006/07	2292	8	28101	92	30393	100
2007/08	2426	8	29229	92	31655	100
2008/09	2533	8	29424	92	31957	100
2009/10	2386	7	30026	93	32412	100
2010/11	2210	7	29662	93	31872	100

¹ A student is categorized as enrolled in either a developmental program or a post-secondary education ("PSE") level program, based on the first identified enrolment after graduating from K-12.

K-12 Non-Graduates Enrolled in Post-Secondary within 3 Years

K-12 Non-Graduates by Post-Secondary Program Area² (within 3 years of leaving K-12)

Year of Last Enrolment in the K-12 System	Developmental Level		PSE Level		Total	
	(#)	(%)	(#)	(%)	(#)	(%)
2006/07	1857	43	2462	57	4319	100
2007/08	1928	43	2583	57	4511	100
2008/09	1908	41	2724	59	4632	100
2009/10	1939	39	3043	61	4982	100
2010/11	1990	37	3318	63	5308	100

² A student is categorized as enrolled in either a developmental program or a post-secondary education ("PSE") level program, based on the first identified enrolment after K-12.

Student Transitions to BC Public Post-Secondary Institutions - 2013/14 Province - Public and Independent Schools Combined

Grade 12 Graduates Enrolled in Post-Secondary within 3 Years

Grade 12 Graduate Enrolments by Post-Secondary Sector¹

Grade 12 Graduation Year	Community College (%)	Institute (%)	Research- Intensive University (%)	Teaching- Intensive University (%)	Total (%)
2006/07	36.6	6.8	31.8	24.9	100.0
2007/08	33.3	6.9	31.0	28.8	100.0
2008/09	33.2	6.6	31.3	28.8	100.0
2009/10	34.3	6.7	30.3	28.7	100.0
2010/11	34.1	6.9	30.5	28.4	100.0

K-12 Non-Graduates Enrolled in Post-Secondary within 3 Years

K-12 Non-Graduate Enrolments by Post-Secondary Sector¹

Year of Last Enrolment in the K-12 System	Community College (%)	Institute (%)	Research- Intensive University (%)	Teaching- Intensive University (%)	Total (%)
2006/07	61.2	14.2	3.0	21.5	100.0
2007/08	58.9	13.5	3.8	23.7	100.0
2008/09	60.6	14.0	3.8	21.5	100.0
2009/10	58.9	13.8	4.1	23.2	100.0
2010/11	61.3	13.0	4.2	21.5	100.0

¹ In recent years, numerous BC post-secondary institutions have changed their name and sector designation. Because of these changes, and to ensure consistency over time, each institution is reported under its most recent name and sector designation.

Student Transitions to BC Public Post-Secondary Institutions - 2013/14 Province - Public and Independent Schools Combined

Grade 12 Graduate Transitions into Post-Secondary within 3 Years¹

Sector	Post-Secondary Institution	Grade 12 Graduation Year 2010/11	
		(#)	(%)
Community College	Camosun College	1,464	4.6
	College Of New Caledonia	749	2.4
	College Of The Rockies	380	1.2
	Douglas College	2,231	7.0
	Langara College	1,902	6.0
	North Island College	676	2.1
	Northern Lights College	348	1.1
	Northwest Community College	295	0.9
	Okanagan College	1,635	5.1
	Selkirk College	419	1.3
	Vancouver Community College	766	2.4
	Subtotal	10,865	34.1
Institute	British Columbia Institute Of Technology	1,866	5.9
	Justice Institute Of British Columbia	268	0.8
	Nicola Valley Institute Of Technology	75	0.2
	Subtotal	2,209	6.9
Research-Intensive University	Simon Fraser University	2,736	8.6
	University Of British Columbia	3,501	11.0
	University Of British Columbia Okanagan	1,130	3.5
	University Of Northern British Columbia	388	1.2
	University Of Victoria	1,979	6.2
	Subtotal	9,734	30.5
Teaching-Intensive University	Capilano University	1,396	4.4
	Emily Carr University Of Art and Design	175	0.5
	Kwantlen Polytechnic University	2,987	9.4
	Royal Roads University	1	0.0
	Thompson Rivers University	1,309	4.1
	University Of The Fraser Valley	1,937	6.1
	Vancouver Island University	1,259	4.0
	Subtotal	9,064	28.4
	Total	31,872	100.0

¹ In recent years, numerous BC post-secondary institutions have changed their name and sector designation. Because of these changes, and to ensure consistency over time, each institution is reported under its most recent name and sector designation.

Student Transitions to BC Public Post-Secondary Institutions - 2013/14 Province - Public and Independent Schools Combined

K-12 Non-Graduate Transitions into Post-Secondary within 3 Years¹

Sector	Post-Secondary Institution	Year of Last Enrolment in K-12 2010/11	
		(#)	(%)
Community College	Camosun College	298	5.6
	College Of New Caledonia	310	5.8
	College Of The Rockies	123	2.3
	Douglas College	419	7.9
	Langara College	229	4.3
	North Island College	285	5.4
	Northern Lights College	170	3.2
	Northwest Community College	235	4.4
	Okanagan College	324	6.1
	Selkirk College	116	2.2
	Vancouver Community College	744	14.0
	Subtotal	3,253	61.3
Institute	British Columbia Institute Of Technology	499	9.4
	Justice Institute Of British Columbia	116	2.2
	Nicola Valley Institute Of Technology	75	1.4
	Subtotal	690	13.0
Research-Intensive University	Simon Fraser University	79	1.5
	University Of British Columbia	77	1.5
	University Of British Columbia Okanagan	14	0.3
	University Of Northern British Columbia	13	0.2
	University Of Victoria	42	0.8
	Subtotal	225	4.2
Teaching-Intensive University	Capilano University	128	2.4
	Emily Carr University Of Art and Design	11	0.2
	Kwantlen Polytechnic University	313	5.9
	Royal Roads University	5	0.1
	Thompson Rivers University	233	4.4
	University Of The Fraser Valley	192	3.6
	Vancouver Island University	258	4.9
	Subtotal	1,140	21.5
	Total	5,308	100.0

¹ In recent years, numerous BC post-secondary institutions have changed their name and sector designation. Because of these changes, and to ensure consistency over time, each institution is reported under its most recent name and sector designation.

Student Transitions to BC Public Post-Secondary Institutions - 2013/14 Province - Public and Independent Schools Combined

Post-Secondary Credentials of Grade 12 Graduates

Post-Secondary Credential	PSI School Year 2013/14	
	(#)	(%)
Advanced Certificate	363	1.0
Advanced Diploma	260	0.7
Apprenticeship	527	1.5
Associate Degree	845	2.3
Bachelors Degree	15737	43.6
Certificate	8757	24.2
Developmental Credential	167	0.5
Diploma	5601	15.5
Doctorate	130	0.4
First Professional Degree	463	1.3
Graduate Certificate	49	0.1
Graduate Diploma	62	0.2
Masters Degree	1551	4.3
Other	84	0.2
Post-Degree Certificate	66	0.2
Post-Degree Diploma	356	1.0
Short Certificate	1113	3.1
Total Post-Secondary Credentials	36131	100.0

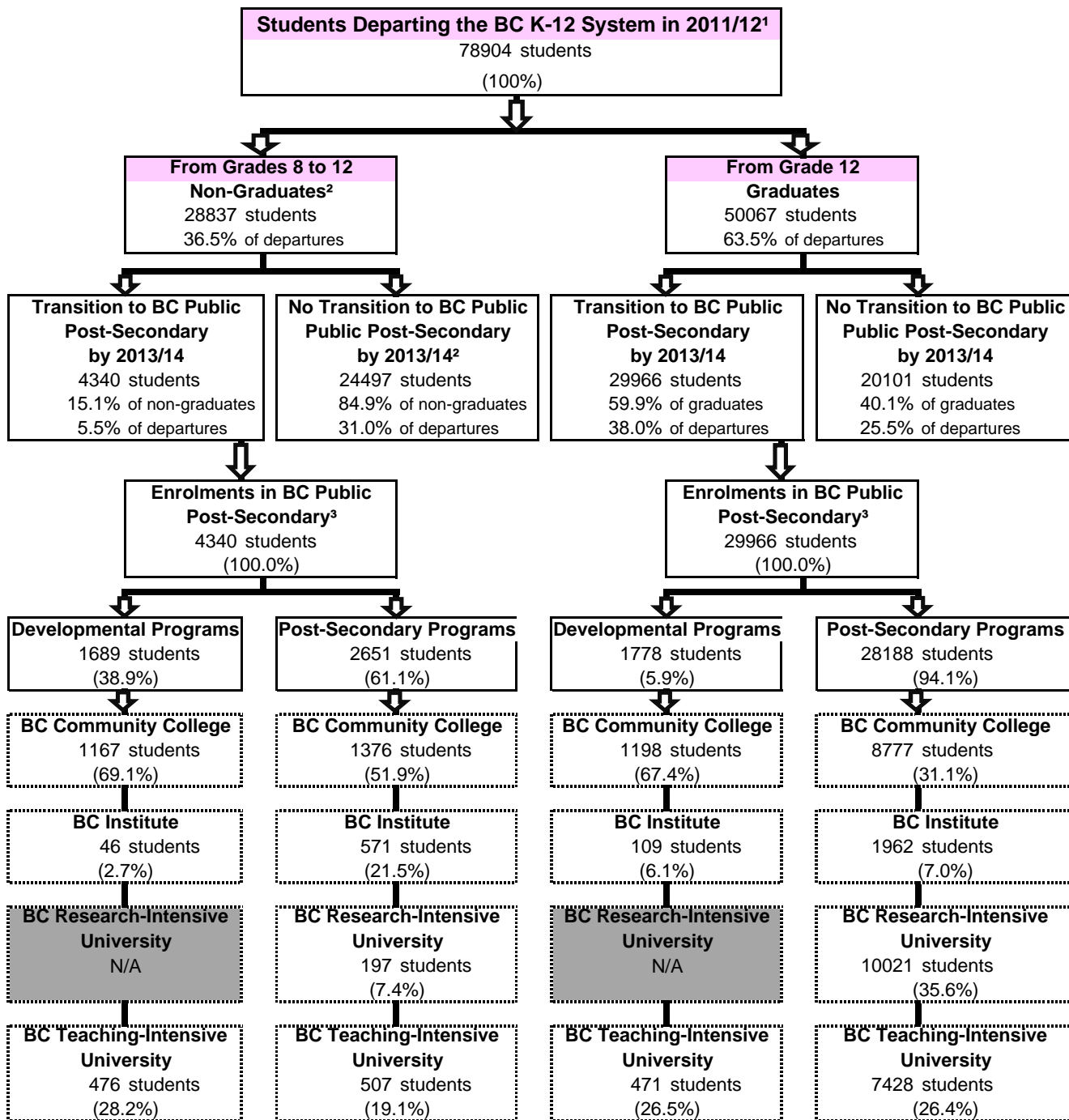
Post-Secondary Credentials of K-12 Non-Graduates

Post-Secondary Credential	PSI School Year 2013/14	
	(#)	(%)
Advanced Certificate	18	0.5
Advanced Diploma	16	0.5
Apprenticeship	104	2.9
Associate Degree	40	1.1
Bachelors Degree	582	16.4
Certificate	1471	41.5
Developmental Credential	359	10.1
Diploma	471	13.3
Doctorate	9	0.3
First Professional Degree	14	0.4
Graduate Certificate	6	0.2
Graduate Diploma	5	0.1
Masters Degree	102	2.9
Other	5	0.1
Post-Degree Certificate	4	0.1
Post-Degree Diploma	19	0.5
Short Certificate	319	9.0
Total Post-Secondary Credentials	3544	100.0

Student Transitions to BC Public Post-Secondary Institutions - 2013/14

Province - Public and Independent Schools Combined

Annual Outflow of Students, K-12



1 This allows for analysis of two complete academic years after students depart from the K-12 system. 'Departures' include grade 12 graduates, and non-graduates who left at some point during their grade 8 to grade 12 school years.

2 Non-graduates are identified by the last year they were seen in the K-12 system. Non-graduates may have been last seen in grades 8 to 12.

The numbers for non-graduates are unadjusted for outmigration - some may have moved to and graduated in other jurisdictions. Over time, the number of non-graduates may decrease as students complete graduation requirements and are counted as graduates.

3 In recent years, numerous BC post-secondary institutions have changed their name and sector designation. Because of these changes, and to ensure consistency over time, each institution is reported under its most recent name and sector designation.