

Student Transitions to BC Public Post-Secondary Institutions - 2013/14

061 - Greater Victoria

Preface

This report includes data from the BC Ministry of Education (MED) K-12 system combined with BC post-secondary data compiled by the Student Transitions Project (STP).

Definitions used are in accordance with MED public reporting data definitions and consequently figures may differ from those stated within STP reports.

This report includes all graduates, using a definition that is more broad than the “eligible to graduate” definition used in many STP reports. It also includes all non-graduates, both those who transitioned to a BC public post-secondary institution (PSI) and those who did not.

In the 2010/11 and 2011/12 reports, students who leave the BC school system in Kindergarten or in Grades 1 to 7 are no longer included in the counts of non-graduates. This removes younger students who are more likely to have moved to a school in another jurisdiction than they are to have dropped out. The main effect of this change, compared to the 2009/10 report, is a drop in the counts of non-graduates who do not transition to a PSI, since very few of those last seen in these lower grades do transition to a PSI.

A problem was identified in previous STP data where some students in developmental program areas were mapped to post-secondary education (PSE) study levels. This means that the reported counts of students in developmental level programs were low while the counts of students in PSE level programs were inflated. The underlying definition has now been changed. The effect of this change, compared to the 2009/10 report, is an increase in the counts of students in developmental level programs and a decrease in the counts of students in PSE level programs (pages 8 and 13).

Student Transitions to BC Public Post-Secondary Institutions - 2013/14

061 - Greater Victoria

Grade 12 Graduates by Post-Secondary Institution Entry Year

K-12 Graduation Year	Post-Secondary Entry Year					Total Grade 12 Graduates (#)
	2009/10 (# and %)	2010/11 (# and %)	2011/12 (# and %)	2012/13 (# and %)	2013/14 (# and %)	
2008/09	741 (50.2%)	187 (12.7%)	83 (5.6%)	45 (3.0%)	30 (2.0%)	1476
2009/10		747 (49.0%)	196 (12.9%)	87 (5.7%)	46 (3.0%)	1525
2010/11			740 (47.3%)	206 (13.2%)	67 (4.3%)	1565
2011/12				798 (48.5%)	218 (13.2%)	1647
2012/13					716 (44.6%)	1604

K-12 Non-Graduates by Post-Secondary Institution Entry Year

Year of Last Enrolment in the K-12 System	Post-Secondary Entry Year					Total Non-Graduates (#) ¹
	2009/10 (# and %)	2010/11 (# and %)	2011/12 (# and %)	2012/13 (# and %)	2013/14 (# and %)	
2008/09	83 (9.0%)	24 (2.6%)	25 (2.7%)	16 (1.7%)	11 (1.2%)	927
2009/10		83 (8.0%)	29 (2.8%)	23 (2.2%)	26 (2.5%)	1036
2010/11			97 (8.4%)	37 (3.2%)	20 (1.7%)	1155
2011/12				79 (7.1%)	35 (3.2%)	1109
2012/13					98 (8.5%)	1148

¹ Over time, the number of non-graduates may decrease as these students complete graduation requirements and are counted as part of the graduate population.

Student Transitions to BC Public Post-Secondary Institutions - 2013/14

061 - Greater Victoria

Grade 12 Graduates by Demographic Group

Demographic Group	Grade 12 Graduates of School Year		Year of Transition to a Post-Secondary Institution							
	2009/10		2010/11		2011/12		2012/13		2013/14	
	(#)	(%)	(#)	(%)	(#)	(%)	(#)	(%)	(#)	(%)
All Students	1525	100	747	49	196	13	87	6	46	3
Female	764	100	393	51	100	13	37	5	22	3
Male	761	100	354	47	96	13	50	7	24	3
Aboriginal	74	100	31	42	6	8	4	5	4	5
ELL	32	100	27	84	1	3	0	0	1	3
Special Needs	137	100	66	48	20	15	5	4	2	1

K-12 Non-Graduates by Demographic Group

Demographic Group	K-12 Non-Graduates of Year of Last Enrolment		Year of Transition to a Post-Secondary Institution							
	2009/10 ¹		2010/11		2011/12		2012/13		2013/14	
	(#)	(%)	(#)	(%)	(#)	(%)	(#)	(%)	(#)	(%)
All Students	1036	100	83	8	29	3	23	2	26	3
Female	527	100	46	9	19	4	15	3	8	2
Male	509	100	37	7	10	2	8	2	18	4
Aboriginal	92	100	7	8	5	5	2	2	5	5
ELL	Msk	100	Msk	Msk	Msk	Msk	Msk	Msk	Msk	Msk
Special Needs	80	100	9	11	1	1	2	3	3	4

¹ Over time, the number of non-graduates may decrease as these students complete graduation requirements and are counted as part of the graduate population.

Student Transitions to BC Public Post-Secondary Institutions - 2013/14

061 - Greater Victoria

Grade 12 Graduates Entering Community Colleges

Demographic Group	Grade 12 Graduates of School Year		Year of Transition to a Community College ¹							
	2009/10		2010/11		2011/12		2012/13		2013/14	
	(#)	(%)	(#)	(%)	(#)	(%)	(#)	(%)	(#)	(%)
All Students	1525	100	402	26	144	9	65	4	36	2
Female	764	100	204	27	73	10	29	4	19	2
Male	761	100	198	26	71	9	36	5	17	2
Aboriginal	74	100	22	30	6	8	4	5	3	4
ELL	32	100	10	31	1	3	0	0	1	3
Special Needs	137	100	33	24	14	10	4	3	1	1

K-12 Non-Graduates Entering Community Colleges

Demographic Group	K-12 Non-Graduates of Year of Last Enrolment		Year of Transition to a Community College ¹							
	2009/10 ²		2010/11		2011/12		2012/13		2013/14	
	(#)	(%)	(#)	(%)	(#)	(%)	(#)	(%)	(#)	(%)
All Students	1036	100	72	7	26	3	20	2	19	2
Female	527	100	37	7	17	3	13	2	4	1
Male	509	100	35	7	9	2	7	1	15	3
Aboriginal	92	100	6	7	5	5	2	2	4	4
ELL	Msk	100	Msk	Msk	Msk	Msk	Msk	Msk	Msk	Msk
Special Needs	80	100	9	11	1	1	2	3	2	3

¹ In recent years, numerous BC post-secondary institutions have changed their name and sector designation. Because of these changes, and to ensure consistency over time, each institution is reported under its most recent name and sector designation.

² Over time, the number of non-graduates may decrease as these students complete graduation requirements and are counted as part of the graduate population.

Student Transitions to BC Public Post-Secondary Institutions - 2013/14

061 - Greater Victoria

Grade 12 Graduates Entering Institutes

Demographic Group	Grade 12 Graduates of School Year		Year of Transition to an Institute ¹							
	2009/10		2010/11		2011/12		2012/13		2013/14	
	(#)	(%)	(#)	(%)	(#)	(%)	(#)	(%)	(#)	(%)
All Students	1525	100	6	0	7	0	5	0	1	0
Female	764	100	1	0	2	0	0	0	1	0
Male	761	100	5	1	5	1	5	1	0	0
Aboriginal	74	100	0	0	0	0	0	0	0	0
ELL	32	100	1	3	0	0	0	0	0	0
Special Needs	137	100	0	0	1	1	0	0	0	0

K-12 Non-Graduates Entering Institutes

Demographic Group	K-12 Non-Graduates of Year of Last Enrolment		Year of Transition to an Institute ¹							
	2009/10 ²		2010/11		2011/12		2012/13		2013/14	
	(#)	(%)	(#)	(%)	(#)	(%)	(#)	(%)	(#)	(%)
All Students	1036	100	2	0	1	0	1	0	2	0
Female	527	100	1	0	0	0	0	0	1	0
Male	509	100	1	0	1	0	1	0	1	0
Aboriginal	92	100	0	0	0	0	0	0	1	1
ELL	Msk	100	Msk	Msk	Msk	Msk	Msk	Msk	Msk	Msk
Special Needs	80	100	0	0	0	0	0	0	0	0

¹ In recent years, numerous BC post-secondary institutions have changed their name and sector designation. Because of these changes, and to ensure consistency over time, each institution is reported under its most recent name and sector designation.

² Over time, the number of non-graduates may decrease as these students complete graduation requirements and are counted as part of the graduate population.

Student Transitions to BC Public Post-Secondary Institutions - 2013/14

061 - Greater Victoria

Grade 12 Graduates Entering Research-Intensive Universities

Demographic Group	Grade 12 Graduates of School Year		Year of Transition to a Research-Intensive University ¹							
	2009/10		2010/11		2011/12		2012/13		2013/14	
	(#)	(%)	(#)	(%)	(#)	(%)	(#)	(%)	(#)	(%)
All Students	1525	100	325	21	39	3	10	1	4	0
Female	764	100	180	24	23	3	5	1	2	0
Male	761	100	145	19	16	2	5	1	2	0
Aboriginal	74	100	8	11	0	0	0	0	0	0
ELL	32	100	16	50	0	0	0	0	0	0
Special Needs	137	100	31	23	4	3	1	1	1	1

K-12 Non-Graduates Entering Research-Intensive Universities

Demographic Group	K-12 Non-Graduates of Year of Last Enrolment		Year of Transition to a Research-Intensive University ¹							
	2009/10 ²		2010/11		2011/12		2012/13		2013/14	
	(#)	(%)	(#)	(%)	(#)	(%)	(#)	(%)	(#)	(%)
All Students	1036	100	4	0	1	0	1	0	1	0
Female	527	100	4	1	1	0	1	0	0	0
Male	509	100	0	0	0	0	0	0	1	0
Aboriginal	92	100	0	0	0	0	0	0	0	0
ELL	Msk	100	Msk	Msk	Msk	Msk	Msk	Msk	Msk	Msk
Special Needs	80	100	0	0	0	0	0	0	0	0

¹ In recent years, numerous BC post-secondary institutions have changed their name and sector designation. Because of these changes, and to ensure consistency over time, each institution is reported under its most recent name and sector designation.

² Over time, the number of non-graduates may decrease as these students complete graduation requirements and are counted as part of the graduate population.

Student Transitions to BC Public Post-Secondary Institutions - 2013/14

061 - Greater Victoria

Grade 12 Graduates Entering Teaching-Intensive Universities

Demographic Group	Grade 12 Graduates of School Year		Year of Transition to a Teaching-Intensive University ¹							
	2009/10		2010/11		2011/12		2012/13		2013/14	
	(#)	(%)	(#)	(%)	(#)	(%)	(#)	(%)	(#)	(%)
All Students	1525	100	14	1	6	0	7	0	5	0
Female	764	100	8	1	2	0	3	0	0	0
Male	761	100	6	1	4	1	4	1	5	1
Aboriginal	74	100	1	1	0	0	0	0	1	1
ELL	32	100	0	0	0	0	0	0	0	0
Special Needs	137	100	2	1	1	1	0	0	0	0

K-12 Non-Graduates Entering Teaching-Intensive Universities

Demographic Group	K-12 Non-Graduates of Year of Last Enrolment		Year of Transition to a Teaching-Intensive University ¹							
	2009/10 ²		2010/11		2011/12		2012/13		2013/14	
	(#)	(%)	(#)	(%)	(#)	(%)	(#)	(%)	(#)	(%)
All Students	1036	100	5	0	1	0	1	0	4	0
Female	527	100	4	1	1	0	1	0	3	1
Male	509	100	1	0	0	0	0	0	1	0
Aboriginal	92	100	1	1	0	0	0	0	0	0
ELL	Msk	100	Msk	Msk	Msk	Msk	Msk	Msk	Msk	Msk
Special Needs	80	100	0	0	0	0	0	0	1	1

¹ In recent years, numerous BC post-secondary institutions have changed their name and sector designation. Because of these changes, and to ensure consistency over time, each institution is reported under its most recent name and sector designation.

² Over time, the number of non-graduates may decrease as these students complete graduation requirements and are counted as part of the graduate population.

Student Transitions to BC Public Post-Secondary Institutions - 2013/14

061 - Greater Victoria

Grade 12 Graduates Enrolled in Post-Secondary within 3 Years

Grade 12 Graduates by Post-Secondary Program Area¹ (within 3 years of graduating K-12)

Grade 12 Graduation Year	Developmental Level		PSE Level		Total	
	(#)	(%)	(#)	(%)	(#)	(%)
2006/07	113	12	808	88	921	100
2007/08	126	13	854	87	980	100
2008/09	132	13	879	87	1011	100
2009/10	144	14	886	86	1030	100
2010/11	123	12	890	88	1013	100

¹ A student is categorized as enrolled in either a developmental program or a post-secondary education ("PSE") level program, based on the first identified enrolment after graduating from K-12.

K-12 Non-Graduates Enrolled in Post-Secondary within 3 Years

K-12 Non-Graduates by Post-Secondary Program Area² (within 3 years of leaving K-12)

Year of Last Enrolment in the K-12 System	Developmental Level		PSE Level		Total	
	(#)	(%)	(#)	(%)	(#)	(%)
2006/07	66	52	62	48	128	100
2007/08	72	55	58	45	130	100
2008/09	73	55	59	45	132	100
2009/10	75	56	60	44	135	100
2010/11	81	53	73	47	154	100

² A student is categorized as enrolled in either a developmental program or a post-secondary education ("PSE") level program, based on the first identified enrolment after K-12.

Student Transitions to BC Public Post-Secondary Institutions - 2013/14

061 - Greater Victoria

Grade 12 Graduates Enrolled in Post-Secondary within 3 Years

Grade 12 Graduate Enrolments by Post-Secondary Sector¹

Grade 12 Graduation Year	Community College (%)	Institute (%)	Research- Intensive University (%)	Teaching- Intensive University (%)	Total (%)
2006/07	63.4	1.5	32.0	3.0	100.0
2007/08	59.5	1.7	36.5	2.2	100.0
2008/09	57.3	1.3	37.7	3.8	100.0
2009/10	59.3	1.7	36.3	2.6	100.0
2010/11	59.3	1.5	36.5	2.7	100.0

K-12 Non-Graduates Enrolled in Post-Secondary within 3 Years

K-12 Non-Graduate Enrolments by Post-Secondary Sector¹

Year of Last Enrolment in the K-12 System	Community College (%)	Institute (%)	Research- Intensive University (%)	Teaching- Intensive University (%)	Total (%)
2006/07	83.6	2.3	3.1	10.9	100.0
2007/08	84.6	6.2	2.3	6.9	100.0
2008/09	83.3	3.0	6.1	7.6	100.0
2009/10	87.4	3.0	4.4	5.2	100.0
2010/11	85.1	1.9	5.8	7.1	100.0

¹ In recent years, numerous BC post-secondary institutions have changed their name and sector designation. Because of these changes, and to ensure consistency over time, each institution is reported under its most recent name and sector designation.

Student Transitions to BC Public Post-Secondary Institutions - 2013/14

061 - Greater Victoria

Grade 12 Graduate Transitions into Post-Secondary within 3 Years¹

Sector	Post-Secondary Institution	Grade 12 Graduation Year 2010/11	
		(#)	(%)
Community College	Camosun College	576	56.9
	College Of New Caledonia	1	0.1
	College Of The Rockies	0	0.0
	Douglas College	1	0.1
	Langara College	10	1.0
	North Island College	1	0.1
	Northern Lights College	3	0.3
	Northwest Community College	1	0.1
	Okanagan College	4	0.4
	Selkirk College	1	0.1
	Vancouver Community College	3	0.3
	Subtotal	601	59.3
Institute	British Columbia Institute Of Technology	7	0.7
	Justice Institute Of British Columbia	8	0.8
	Nicola Valley Institute Of Technology	0	0.0
	Subtotal	15	1.5
Research-Intensive University	Simon Fraser University	10	1.0
	University Of British Columbia	30	3.0
	University Of British Columbia Okanagan	13	1.3
	University Of Northern British Columbia	3	0.3
	University Of Victoria	314	31.0
	Subtotal	370	36.5
Teaching-Intensive University	Capilano University	2	0.2
	Emily Carr University Of Art and Design	2	0.2
	Kwantlen Polytechnic University	1	0.1
	Royal Roads University	0	0.0
	Thompson Rivers University	8	0.8
	University Of The Fraser Valley	0	0.0
	Vancouver Island University	14	1.4
	Subtotal	27	2.7
Total	1,013	100.0	

¹ In recent years, numerous BC post-secondary institutions have changed their name and sector designation. Because of these changes, and to ensure consistency over time, each institution is reported under its most recent name and sector designation.

Student Transitions to BC Public Post-Secondary Institutions - 2013/14

061 - Greater Victoria

K-12 Non-Graduate Transitions into Post-Secondary within 3 Years¹

Sector	Post-Secondary Institution	Year of Last Enrolment in K-12 2010/11	
		(#)	(%)
Community College	Camosun College	119	77.3
	College Of New Caledonia	0	0.0
	College Of The Rockies	3	1.9
	Douglas College	3	1.9
	Langara College	0	0.0
	North Island College	4	2.6
	Northern Lights College	1	0.6
	Northwest Community College	0	0.0
	Okanagan College	0	0.0
	Selkirk College	0	0.0
	Vancouver Community College	1	0.6
	Subtotal	131	85.1
Institute	British Columbia Institute Of Technology	2	1.3
	Justice Institute Of British Columbia	1	0.6
	Nicola Valley Institute Of Technology	0	0.0
	Subtotal	3	1.9
Research-Intensive University	Simon Fraser University	1	0.6
	University Of British Columbia	0	0.0
	University Of British Columbia Okanagan	0	0.0
	University Of Northern British Columbia	0	0.0
	University Of Victoria	8	5.2
	Subtotal	9	5.8
Teaching-Intensive University	Capilano University	0	0.0
	Emily Carr University Of Art and Design	0	0.0
	Kwantlen Polytechnic University	1	0.6
	Royal Roads University	1	0.6
	Thompson Rivers University	2	1.3
	University Of The Fraser Valley	1	0.6
	Vancouver Island University	6	3.9
	Subtotal	11	7.1
	Total	154	100.0

¹ In recent years, numerous BC post-secondary institutions have changed their name and sector designation. Because of these changes, and to ensure consistency over time, each institution is reported under its most recent name and sector designation.

Student Transitions to BC Public Post-Secondary Institutions - 2013/14

061 - Greater Victoria

Post-Secondary Credentials of Grade 12 Graduates

Post-Secondary Credential	PSI School Year 2013/14	
	(#)	(%)
Advanced Certificate	5	0.4
Advanced Diploma	21	1.5
Apprenticeship	14	1.0
Associate Degree	37	2.7
Bachelors Degree	627	45.2
Certificate	263	19.0
Developmental Credential	35	2.5
Diploma	222	16.0
Doctorate	5	0.4
First Professional Degree	24	1.7
Graduate Certificate	4	0.3
Graduate Diploma	1	0.1
Masters Degree	82	5.9
Other	11	0.8
Post-Degree Certificate	9	0.6
Post-Degree Diploma	4	0.3
Short Certificate	22	1.6
Total Post-Secondary Credentials	1386	100.0

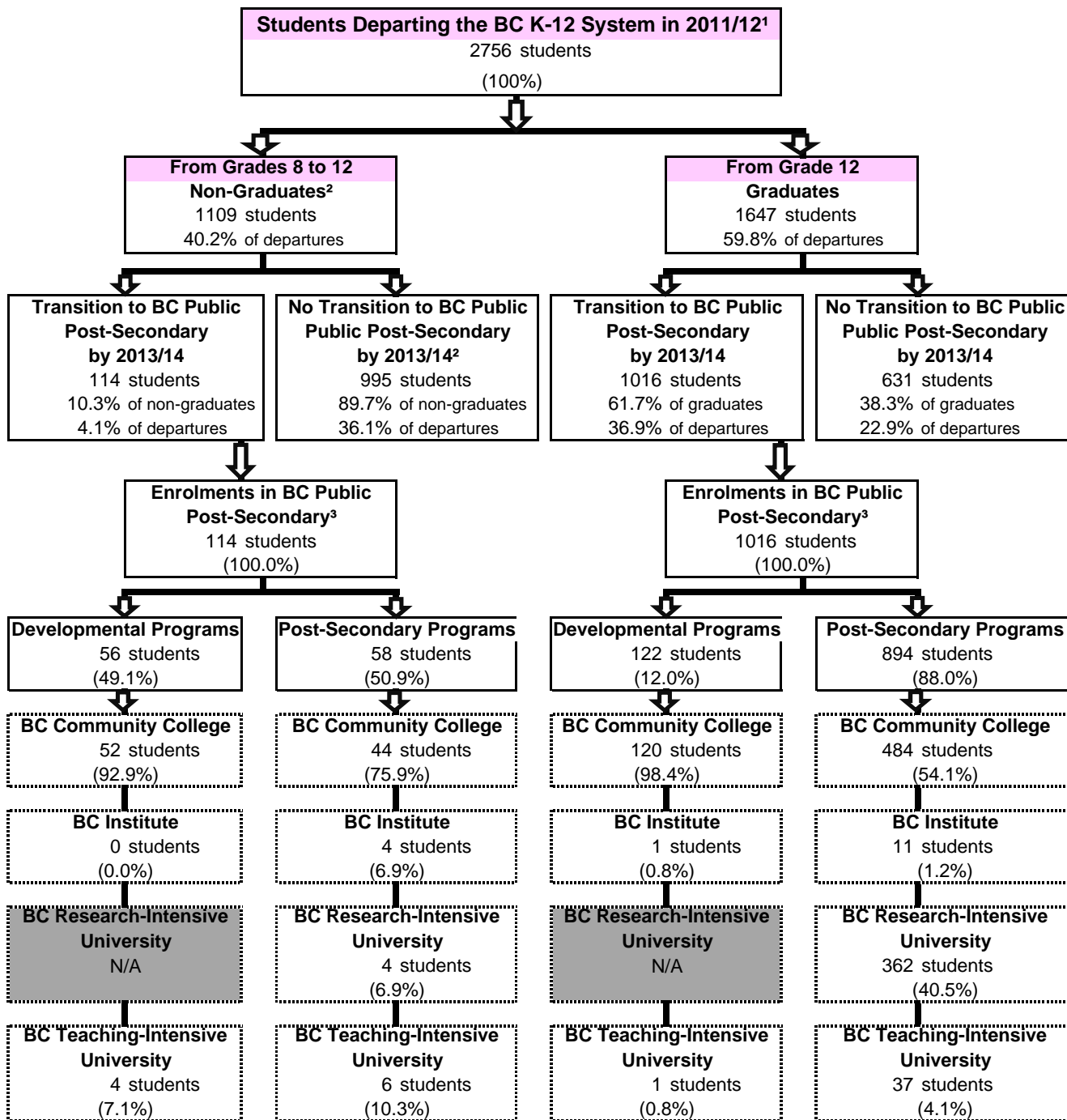
Post-Secondary Credentials of K-12 Non-Graduates

Post-Secondary Credential	PSI School Year 2013/14	
	(#)	(%)
Advanced Certificate	0	0.0
Advanced Diploma	2	1.5
Apprenticeship	0	0.0
Associate Degree	0	0.0
Bachelors Degree	16	12.3
Certificate	59	45.4
Developmental Credential	20	15.4
Diploma	18	13.8
Doctorate	0	0.0
First Professional Degree	0	0.0
Graduate Certificate	1	0.8
Graduate Diploma	0	0.0
Masters Degree	7	5.4
Other	1	0.8
Post-Degree Certificate	0	0.0
Post-Degree Diploma	0	0.0
Short Certificate	6	4.6
Total Post-Secondary Credentials	130	100.0

Student Transitions to BC Public Post-Secondary Institutions - 2013/14

061 - Greater Victoria

Annual Outflow of Students, K-12



1 This allows for analysis of two complete academic years after students depart from the K-12 system. 'Departures' include grade 12 graduates, and non-graduates who left at some point during their grade 8 to grade 12 school years.

2 Non-graduates are identified by the last year they were seen in the K-12 system. Non-graduates may have been last seen in grades 8 to 12.

The numbers for non-graduates are unadjusted for outmigration - some may have moved to and graduated in other jurisdictions. Over time, the number of non-graduates may decrease as students complete graduation requirements and are counted as graduates.

3 In recent years, numerous BC post-secondary institutions have changed their name and sector designation. Because of these changes, and to ensure consistency over time, each institution is reported under its most recent name and sector designation.