

Student Transitions to BC Public Post-Secondary Institutions - 2013/14

052 - Prince Rupert

Preface

This report includes data from the BC Ministry of Education (MED) K-12 system combined with BC post-secondary data compiled by the Student Transitions Project (STP).

Definitions used are in accordance with MED public reporting data definitions and consequently figures may differ from those stated within STP reports.

This report includes all graduates, using a definition that is more broad than the “eligible to graduate” definition used in many STP reports. It also includes all non-graduates, both those who transitioned to a BC public post-secondary institution (PSI) and those who did not.

In the 2010/11 and 2011/12 reports, students who leave the BC school system in Kindergarten or in Grades 1 to 7 are no longer included in the counts of non-graduates. This removes younger students who are more likely to have moved to a school in another jurisdiction than they are to have dropped out. The main effect of this change, compared to the 2009/10 report, is a drop in the counts of non-graduates who do not transition to a PSI, since very few of those last seen in these lower grades do transition to a PSI.

A problem was identified in previous STP data where some students in developmental program areas were mapped to post-secondary education (PSE) study levels. This means that the reported counts of students in developmental level programs were low while the counts of students in PSE level programs were inflated. The underlying definition has now been changed. The effect of this change, compared to the 2009/10 report, is an increase in the counts of students in developmental level programs and a decrease in the counts of students in PSE level programs (pages 8 and 13).

Student Transitions to BC Public Post-Secondary Institutions - 2013/14

052 - Prince Rupert

Grade 12 Graduates by Post-Secondary Institution Entry Year

K-12 Graduation Year	Post-Secondary Entry Year					Total Grade 12 Graduates (#)
	2009/10 (# and %)	2010/11 (# and %)	2011/12 (# and %)	2012/13 (# and %)	2013/14 (# and %)	
2008/09	93 (60.8%)	19 (12.4%)	7 (4.6%)	0 (0.0%)	4 (2.6%)	153
2009/10		99 (68.8%)	12 (8.3%)	5 (3.5%)	4 (2.8%)	144
2010/11			101 (53.7%)	24 (12.8%)	6 (3.2%)	188
2011/12				80 (55.9%)	16 (11.2%)	143
2012/13					71 (49.7%)	143

K-12 Non-Graduates by Post-Secondary Institution Entry Year

Year of Last Enrolment in the K-12 System	Post-Secondary Entry Year					Total Non-Graduates (#) ¹
	2009/10 (# and %)	2010/11 (# and %)	2011/12 (# and %)	2012/13 (# and %)	2013/14 (# and %)	
2008/09	16 (24.6%)	7 (10.8%)	3 (4.6%)	3 (4.6%)	1 (1.5%)	65
2009/10		24 (25.3%)	7 (7.4%)	1 (1.1%)	0 (0.0%)	95
2010/11			16 (16.2%)	8 (8.1%)	6 (6.1%)	99
2011/12				6 (11.8%)	2 (3.9%)	51
2012/13					13 (11.3%)	115

¹ Over time, the number of non-graduates may decrease as these students complete graduation requirements and are counted as part of the graduate population.

Student Transitions to BC Public Post-Secondary Institutions - 2013/14

052 - Prince Rupert

Grade 12 Graduates by Demographic Group

Demographic Group	Grade 12 Graduates of School Year		Year of Transition to a Post-Secondary Institution							
	2009/10		2010/11		2011/12		2012/13		2013/14	
	(#)	(%)	(#)	(%)	(#)	(%)	(#)	(%)	(#)	(%)
All Students	144	100	99	69	12	8	5	3	4	3
Female	76	100	57	75	4	5	4	5	2	3
Male	68	100	42	62	8	12	1	1	2	3
Aboriginal	54	100	31	57	6	11	4	7	2	4
ELL	Msk	100	Msk	Msk	Msk	Msk	Msk	Msk	Msk	Msk
Special Needs	12	100	7	58	0	0	1	8	0	0

K-12 Non-Graduates by Demographic Group

Demographic Group	K-12 Non-Graduates of Year of Last Enrolment		Year of Transition to a Post-Secondary Institution							
	2009/10 ¹		2010/11		2011/12		2012/13		2013/14	
	(#)	(%)	(#)	(%)	(#)	(%)	(#)	(%)	(#)	(%)
All Students	95	100	24	25	7	7	1	1	0	0
Female	51	100	12	24	1	2	0	0	0	0
Male	44	100	12	27	6	14	1	2	0	0
Aboriginal	75	100	22	29	6	8	0	0	0	0
ELL	0	-	-	-	-	-	-	-	-	-
Special Needs	23	100	7	30	3	13	0	0	0	0

¹ Over time, the number of non-graduates may decrease as these students complete graduation requirements and are counted as part of the graduate population.

Student Transitions to BC Public Post-Secondary Institutions - 2013/14

052 - Prince Rupert

Grade 12 Graduates Entering Community Colleges

Demographic Group	Grade 12 Graduates of School Year		Year of Transition to a Community College ¹							
	2009/10		2010/11		2011/12		2012/13		2013/14	
	(#)	(%)	(#)	(%)	(#)	(%)	(#)	(%)	(#)	(%)
All Students	144	100	72	50	9	6	4	3	4	3
Female	76	100	40	53	4	5	3	4	2	3
Male	68	100	32	47	5	7	1	1	2	3
Aboriginal	54	100	25	46	6	11	3	6	2	4
ELL	Msk	100	Msk	Msk	Msk	Msk	Msk	Msk	Msk	Msk
Special Needs	12	100	7	58	0	0	1	8	0	0

K-12 Non-Graduates Entering Community Colleges

Demographic Group	K-12 Non-Graduates of Year of Last Enrolment		Year of Transition to a Community College ¹							
	2009/10 ²		2010/11		2011/12		2012/13		2013/14	
	(#)	(%)	(#)	(%)	(#)	(%)	(#)	(%)	(#)	(%)
All Students	95	100	24	25	7	7	1	1	0	0
Female	51	100	12	24	1	2	0	0	0	0
Male	44	100	12	27	6	14	1	2	0	0
Aboriginal	75	100	22	29	6	8	0	0	0	0
ELL	0	-	-	-	-	-	-	-	-	-
Special Needs	23	100	7	30	3	13	0	0	0	0

¹ In recent years, numerous BC post-secondary institutions have changed their name and sector designation. Because of these changes, and to ensure consistency over time, each institution is reported under its most recent name and sector designation.

² Over time, the number of non-graduates may decrease as these students complete graduation requirements and are counted as part of the graduate population.

Student Transitions to BC Public Post-Secondary Institutions - 2013/14

052 - Prince Rupert

Grade 12 Graduates Entering Institutes

Demographic Group	Grade 12 Graduates of School Year		Year of Transition to an Institute ¹							
	2009/10		2010/11		2011/12		2012/13		2013/14	
	(#)	(%)	(#)	(%)	(#)	(%)	(#)	(%)	(#)	(%)
All Students	144	100	2	1	2	1	1	1	0	0
Female	76	100	0	0	0	0	1	1	0	0
Male	68	100	2	3	2	3	0	0	0	0
Aboriginal	54	100	2	4	0	0	1	2	0	0
ELL	Msk	100	Msk	Msk	Msk	Msk	Msk	Msk	Msk	Msk
Special Needs	12	100	0	0	0	0	0	0	0	0

K-12 Non-Graduates Entering Institutes

Demographic Group	K-12 Non-Graduates of Year of Last Enrolment		Year of Transition to an Institute ¹							
	2009/10 ²		2010/11		2011/12		2012/13		2013/14	
	(#)	(%)	(#)	(%)	(#)	(%)	(#)	(%)	(#)	(%)
All Students	95	100	0	0	0	0	0	0	0	0
Female	51	100	0	0	0	0	0	0	0	0
Male	44	100	0	0	0	0	0	0	0	0
Aboriginal	75	100	0	0	0	0	0	0	0	0
ELL	0	-	-	-	-	-	-	-	-	-
Special Needs	23	100	0	0	0	0	0	0	0	0

¹ In recent years, numerous BC post-secondary institutions have changed their name and sector designation. Because of these changes, and to ensure consistency over time, each institution is reported under its most recent name and sector designation.

² Over time, the number of non-graduates may decrease as these students complete graduation requirements and are counted as part of the graduate population.

Student Transitions to BC Public Post-Secondary Institutions - 2013/14

052 - Prince Rupert

Grade 12 Graduates Entering Research-Intensive Universities

Demographic Group	Grade 12 Graduates of School Year		Year of Transition to a Research-Intensive University ¹							
	2009/10		2010/11		2011/12		2012/13		2013/14	
	(#)	(%)	(#)	(%)	(#)	(%)	(#)	(%)	(#)	(%)
All Students	144	100	19	13	0	0	0	0	0	0
Female	76	100	13	17	0	0	0	0	0	0
Male	68	100	6	9	0	0	0	0	0	0
Aboriginal	54	100	2	4	0	0	0	0	0	0
ELL	Msk	100	Msk	Msk	Msk	Msk	Msk	Msk	Msk	Msk
Special Needs	12	100	0	0	0	0	0	0	0	0

K-12 Non-Graduates Entering Research-Intensive Universities

Demographic Group	K-12 Non-Graduates of Year of Last Enrolment		Year of Transition to a Research-Intensive University ¹							
	2009/10 ²		2010/11		2011/12		2012/13		2013/14	
	(#)	(%)	(#)	(%)	(#)	(%)	(#)	(%)	(#)	(%)
All Students	95	100	0	0	0	0	0	0	0	0
Female	51	100	0	0	0	0	0	0	0	0
Male	44	100	0	0	0	0	0	0	0	0
Aboriginal	75	100	0	0	0	0	0	0	0	0
ELL	0	-	-	-	-	-	-	-	-	-
Special Needs	23	100	0	0	0	0	0	0	0	0

¹ In recent years, numerous BC post-secondary institutions have changed their name and sector designation. Because of these changes, and to ensure consistency over time, each institution is reported under its most recent name and sector designation.

² Over time, the number of non-graduates may decrease as these students complete graduation requirements and are counted as part of the graduate population.

Student Transitions to BC Public Post-Secondary Institutions - 2013/14

052 - Prince Rupert

Grade 12 Graduates Entering Teaching-Intensive Universities

Demographic Group	Grade 12 Graduates of School Year		Year of Transition to a Teaching-Intensive University ¹							
	2009/10		2010/11		2011/12		2012/13		2013/14	
	(#)	(%)	(#)	(%)	(#)	(%)	(#)	(%)	(#)	(%)
All Students	144	100	6	4	1	1	0	0	0	0
Female	76	100	4	5	0	0	0	0	0	0
Male	68	100	2	3	1	1	0	0	0	0
Aboriginal	54	100	2	4	0	0	0	0	0	0
ELL	Msk	100	Msk	Msk	Msk	Msk	Msk	Msk	Msk	Msk
Special Needs	12	100	0	0	0	0	0	0	0	0

K-12 Non-Graduates Entering Teaching-Intensive Universities

Demographic Group	K-12 Non-Graduates of Year of Last Enrolment		Year of Transition to a Teaching-Intensive University ¹							
	2009/10 ²		2010/11		2011/12		2012/13		2013/14	
	(#)	(%)	(#)	(%)	(#)	(%)	(#)	(%)	(#)	(%)
All Students	95	100	0	0	0	0	0	0	0	0
Female	51	100	0	0	0	0	0	0	0	0
Male	44	100	0	0	0	0	0	0	0	0
Aboriginal	75	100	0	0	0	0	0	0	0	0
ELL	0	-	-	-	-	-	-	-	-	-
Special Needs	23	100	0	0	0	0	0	0	0	0

¹ In recent years, numerous BC post-secondary institutions have changed their name and sector designation. Because of these changes, and to ensure consistency over time, each institution is reported under its most recent name and sector designation.

² Over time, the number of non-graduates may decrease as these students complete graduation requirements and are counted as part of the graduate population.

Student Transitions to BC Public Post-Secondary Institutions - 2013/14

052 - Prince Rupert

Grade 12 Graduates Enrolled in Post-Secondary within 3 Years

Grade 12 Graduates by Post-Secondary Program Area¹ (within 3 years of graduating K-12)

Grade 12 Graduation Year	Developmental Level		PSE Level		Total	
	(#)	(%)	(#)	(%)	(#)	(%)
2006/07	15	12	115	88	130	100
2007/08	15	13	102	87	117	100
2008/09	29	24	90	76	119	100
2009/10	26	22	90	78	116	100
2010/11	24	18	107	82	131	100

¹ A student is categorized as enrolled in either a developmental program or a post-secondary education ("PSE") level program, based on the first identified enrolment after graduating from K-12.

K-12 Non-Graduates Enrolled in Post-Secondary within 3 Years

K-12 Non-Graduates by Post-Secondary Program Area² (within 3 years of leaving K-12)

Year of Last Enrolment in the K-12 System	Developmental Level		PSE Level		Total	
	(#)	(%)	(#)	(%)	(#)	(%)
2006/07	31	69	14	31	45	100
2007/08	26	68	12	32	38	100
2008/09	22	85	4	15	26	100
2009/10	19	59	13	41	32	100
2010/11	19	63	11	37	30	100

² A student is categorized as enrolled in either a developmental program or a post-secondary education ("PSE") level program, based on the first identified enrolment after K-12.

Student Transitions to BC Public Post-Secondary Institutions - 2013/14

052 - Prince Rupert

Grade 12 Graduates Enrolled in Post-Secondary within 3 Years

Grade 12 Graduate Enrolments by Post-Secondary Sector¹

Grade 12 Graduation Year	Community College (%)	Institute (%)	Research- Intensive University (%)	Teaching- Intensive University (%)	Total (%)
2006/07	78.5	3.8	8.5	9.2	100.0
2007/08	72.6	0.9	17.1	9.4	100.0
2008/09	64.7	2.5	24.4	8.4	100.0
2009/10	73.3	4.3	16.4	6.0	100.0
2010/11	65.6	9.2	19.1	6.1	100.0

K-12 Non-Graduates Enrolled in Post-Secondary within 3 Years

K-12 Non-Graduate Enrolments by Post-Secondary Sector¹

Year of Last Enrolment in the K-12 System	Community College (%)	Institute (%)	Research- Intensive University (%)	Teaching- Intensive University (%)	Total (%)
2006/07	95.6	2.2	2.2	0.0	100.0
2007/08	94.7	2.6	0.0	2.6	100.0
2008/09	100.0	0.0	0.0	0.0	100.0
2009/10	100.0	0.0	0.0	0.0	100.0
2010/11	96.7	0.0	0.0	3.3	100.0

¹ In recent years, numerous BC post-secondary institutions have changed their name and sector designation. Because of these changes, and to ensure consistency over time, each institution is reported under its most recent name and sector designation.

Student Transitions to BC Public Post-Secondary Institutions - 2013/14

052 - Prince Rupert

Grade 12 Graduate Transitions into Post-Secondary within 3 Years¹

Sector	Post-Secondary Institution	Grade 12 Graduation Year 2010/11	
		(#)	(%)
Community College	Camosun College	1	0.8
	College Of New Caledonia	6	4.6
	College Of The Rockies	0	0.0
	Douglas College	0	0.0
	Langara College	1	0.8
	North Island College	0	0.0
	Northern Lights College	0	0.0
	Northwest Community College	71	54.2
	Okanagan College	3	2.3
	Selkirk College	0	0.0
	Vancouver Community College	4	3.1
	Subtotal	86	65.6
Institute	British Columbia Institute Of Technology	8	6.1
	Justice Institute Of British Columbia	2	1.5
	Nicola Valley Institute Of Technology	2	1.5
	Subtotal	12	9.2
Research-Intensive University	Simon Fraser University	0	0.0
	University Of British Columbia	6	4.6
	University Of British Columbia Okanagan	1	0.8
	University Of Northern British Columbia	7	5.3
	University Of Victoria	11	8.4
	Subtotal	25	19.1
Teaching-Intensive University	Capilano University	0	0.0
	Emily Carr University Of Art and Design	0	0.0
	Kwantlen Polytechnic University	0	0.0
	Royal Roads University	0	0.0
	Thompson Rivers University	1	0.8
	University Of The Fraser Valley	0	0.0
	Vancouver Island University	7	5.3
	Subtotal	8	6.1
	Total	131	100.0

¹ In recent years, numerous BC post-secondary institutions have changed their name and sector designation. Because of these changes, and to ensure consistency over time, each institution is reported under its most recent name and sector designation.

Student Transitions to BC Public Post-Secondary Institutions - 2013/14

052 - Prince Rupert

K-12 Non-Graduate Transitions into Post-Secondary within 3 Years¹

Sector	Post-Secondary Institution	Year of Last Enrolment in K-12 2010/11	
		(#)	(%)
Community College	Camosun College	0	0.0
	College Of New Caledonia	0	0.0
	College Of The Rockies	0	0.0
	Douglas College	0	0.0
	Langara College	0	0.0
	North Island College	0	0.0
	Northern Lights College	1	3.3
	Northwest Community College	27	90.0
	Okanagan College	0	0.0
	Selkirk College	0	0.0
	Vancouver Community College	1	3.3
	Subtotal	29	96.7
Institute	British Columbia Institute Of Technology	0	0.0
	Justice Institute Of British Columbia	0	0.0
	Nicola Valley Institute Of Technology	0	0.0
	Subtotal	0	0.0
Research-Intensive University	Simon Fraser University	0	0.0
	University Of British Columbia	0	0.0
	University Of British Columbia Okanagan	0	0.0
	University Of Northern British Columbia	0	0.0
	University Of Victoria	0	0.0
	Subtotal	0	0.0
Teaching-Intensive University	Capilano University	0	0.0
	Emily Carr University Of Art and Design	0	0.0
	Kwantlen Polytechnic University	0	0.0
	Royal Roads University	0	0.0
	Thompson Rivers University	1	3.3
	University Of The Fraser Valley	0	0.0
	Vancouver Island University	0	0.0
	Subtotal	1	3.3
	Total	30	100.0

¹ In recent years, numerous BC post-secondary institutions have changed their name and sector designation. Because of these changes, and to ensure consistency over time, each institution is reported under its most recent name and sector designation.

Student Transitions to BC Public Post-Secondary Institutions - 2013/14

052 - Prince Rupert

Post-Secondary Credentials of Grade 12 Graduates

Post-Secondary Credential	PSI School Year 2013/14	
	(#)	(%)
Advanced Certificate	1	0.7
Advanced Diploma	1	0.7
Apprenticeship	5	3.6
Associate Degree	6	4.3
Bachelors Degree	41	29.7
Certificate	50	36.2
Developmental Credential	0	0.0
Diploma	14	10.1
Doctorate	0	0.0
First Professional Degree	1	0.7
Graduate Certificate	0	0.0
Graduate Diploma	0	0.0
Masters Degree	10	7.2
Other	0	0.0
Post-Degree Certificate	3	2.2
Post-Degree Diploma	0	0.0
Short Certificate	6	4.3
Total Post-Secondary Credentials	138	100.0

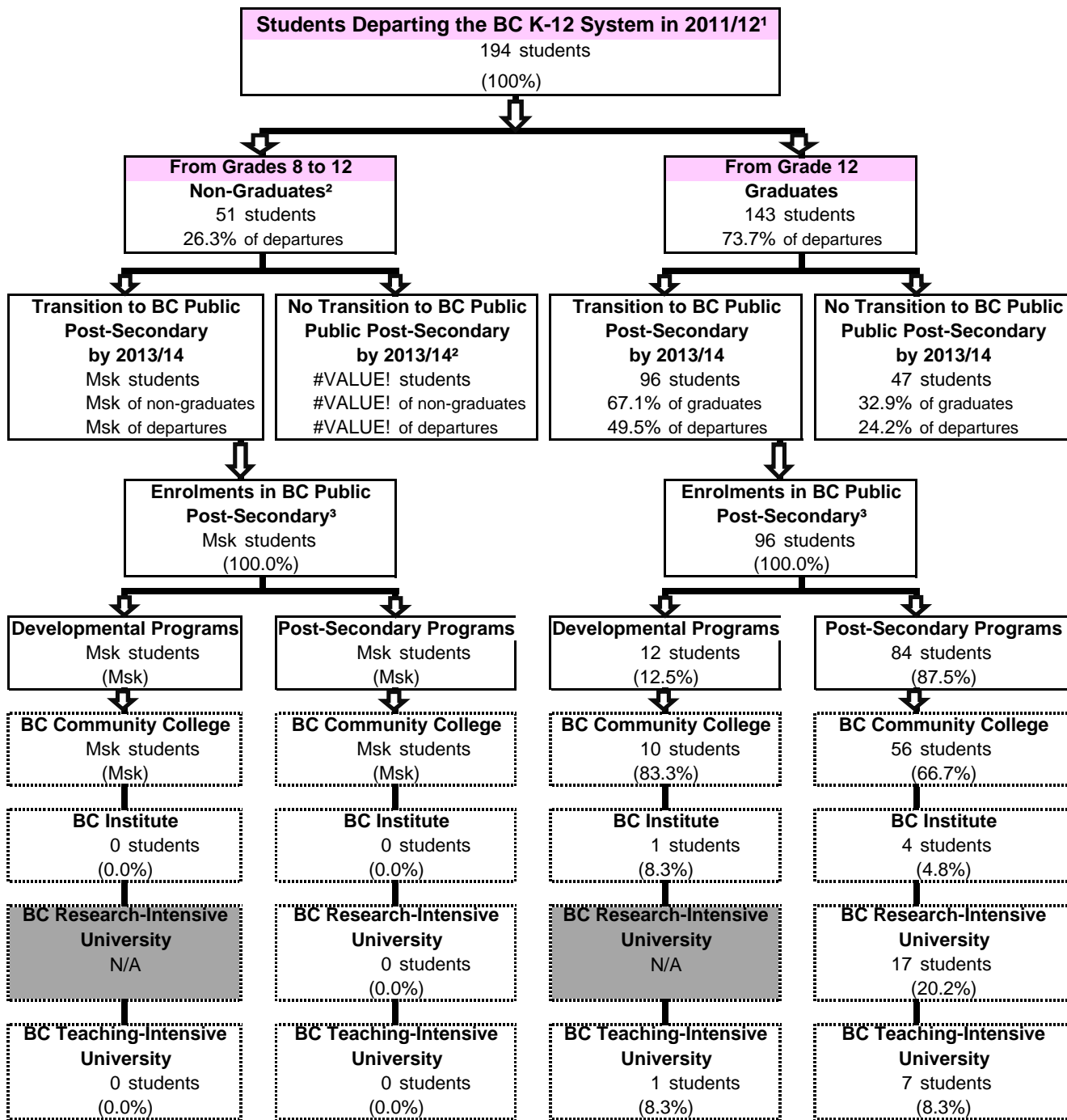
Post-Secondary Credentials of K-12 Non-Graduates

Post-Secondary Credential	PSI School Year 2013/14	
	(#)	(%)
Advanced Certificate	0	0.0
Advanced Diploma	0	0.0
Apprenticeship	1	6.3
Associate Degree	0	0.0
Bachelors Degree	1	6.3
Certificate	5	31.3
Developmental Credential	2	12.5
Diploma	2	12.5
Doctorate	0	0.0
First Professional Degree	1	6.3
Graduate Certificate	0	0.0
Graduate Diploma	0	0.0
Masters Degree	0	0.0
Other	0	0.0
Post-Degree Certificate	0	0.0
Post-Degree Diploma	0	0.0
Short Certificate	4	25.0
Total Post-Secondary Credentials	16	100.0

Student Transitions to BC Public Post-Secondary Institutions - 2013/14

052 - Prince Rupert

Annual Outflow of Students, K-12



1 This allows for analysis of two complete academic years after students depart from the K-12 system. 'Departures' include grade 12 graduates, and non-graduates who left at some point during their grade 8 to grade 12 school years.

2 Non-graduates are identified by the last year they were seen in the K-12 system. Non-graduates may have been last seen in grades 8 to 12.

The numbers for non-graduates are unadjusted for outmigration - some may have moved to and graduated in other jurisdictions. Over time, the number of non-graduates may decrease as students complete graduation requirements and are counted as graduates.

3 In recent years, numerous BC post-secondary institutions have changed their name and sector designation. Because of these changes, and to ensure consistency over time, each institution is reported under its most recent name and sector designation.