

Student Transitions to BC Public Post-Secondary Institutions - 2013/14

038 - Richmond

Preface

This report includes data from the BC Ministry of Education (MED) K-12 system combined with BC post-secondary data compiled by the Student Transitions Project (STP).

Definitions used are in accordance with MED public reporting data definitions and consequently figures may differ from those stated within STP reports.

This report includes all graduates, using a definition that is more broad than the “eligible to graduate” definition used in many STP reports. It also includes all non-graduates, both those who transitioned to a BC public post-secondary institution (PSI) and those who did not.

In the 2010/11 and 2011/12 reports, students who leave the BC school system in Kindergarten or in Grades 1 to 7 are no longer included in the counts of non-graduates. This removes younger students who are more likely to have moved to a school in another jurisdiction than they are to have dropped out. The main effect of this change, compared to the 2009/10 report, is a drop in the counts of non-graduates who do not transition to a PSI, since very few of those last seen in these lower grades do transition to a PSI.

A problem was identified in previous STP data where some students in developmental program areas were mapped to post-secondary education (PSE) study levels. This means that the reported counts of students in developmental level programs were low while the counts of students in PSE level programs were inflated. The underlying definition has now been changed. The effect of this change, compared to the 2009/10 report, is an increase in the counts of students in developmental level programs and a decrease in the counts of students in PSE level programs (pages 8 and 13).

Student Transitions to BC Public Post-Secondary Institutions - 2013/14

038 - Richmond

Grade 12 Graduates by Post-Secondary Institution Entry Year

K-12 Graduation Year	Post-Secondary Entry Year					Total Grade 12 Graduates (#)
	2009/10 (# and %)	2010/11 (# and %)	2011/12 (# and %)	2012/13 (# and %)	2013/14 (# and %)	
2008/09	1371 (74.9%)	103 (5.6%)	37 (2.0%)	16 (0.9%)	17 (0.9%)	1831
2009/10		1455 (74.8%)	97 (5.0%)	40 (2.1%)	9 (0.5%)	1944
2010/11			1386 (71.8%)	124 (6.4%)	38 (2.0%)	1931
2011/12				1395 (71.6%)	119 (6.1%)	1947
2012/13					1368 (69.8%)	1960

K-12 Non-Graduates by Post-Secondary Institution Entry Year

Year of Last Enrolment in the K-12 System	Post-Secondary Entry Year					Total Non-Graduates (#) ¹
	2009/10 (# and %)	2010/11 (# and %)	2011/12 (# and %)	2012/13 (# and %)	2013/14 (# and %)	
2008/09	86 (14.5%)	22 (3.7%)	10 (1.7%)	9 (1.5%)	8 (1.4%)	592
2009/10		113 (17.8%)	27 (4.3%)	11 (1.7%)	10 (1.6%)	634
2010/11			110 (15.2%)	27 (3.7%)	15 (2.1%)	724
2011/12				100 (14.3%)	19 (2.7%)	700
2012/13					94 (13.6%)	692

¹ Over time, the number of non-graduates may decrease as these students complete graduation requirements and are counted as part of the graduate population.

Student Transitions to BC Public Post-Secondary Institutions - 2013/14

038 - Richmond

Grade 12 Graduates by Demographic Group

Demographic Group	Grade 12 Graduates of School Year		Year of Transition to a Post-Secondary Institution							
	2009/10		2010/11		2011/12		2012/13		2013/14	
	(#)	(%)	(#)	(%)	(#)	(%)	(#)	(%)	(#)	(%)
All Students	1944	100	1455	75	97	5	40	2	9	0
Female	979	100	746	76	45	5	22	2	3	0
Male	965	100	709	73	52	5	18	2	6	1
Aboriginal	14	100	7	50	1	7	0	0	0	0
ELL	133	100	98	74	7	5	3	2	1	1
Special Needs	68	100	47	69	4	6	2	3	1	1

K-12 Non-Graduates by Demographic Group

Demographic Group	K-12 Non-Graduates of Year of Last Enrolment		Year of Transition to a Post-Secondary Institution							
	2009/10 ¹		2010/11		2011/12		2012/13		2013/14	
	(#)	(%)	(#)	(%)	(#)	(%)	(#)	(%)	(#)	(%)
All Students	634	100	113	18	27	4	11	2	10	2
Female	327	100	48	15	18	6	7	2	4	1
Male	307	100	65	21	9	3	4	1	6	2
Aboriginal	12	100	2	17	0	0	0	0	1	8
ELL	78	100	16	21	4	5	0	0	0	0
Special Needs	48	100	8	17	0	0	0	0	2	4

¹ Over time, the number of non-graduates may decrease as these students complete graduation requirements and are counted as part of the graduate population.

Student Transitions to BC Public Post-Secondary Institutions - 2013/14

038 - Richmond

Grade 12 Graduates Entering Community Colleges

Demographic Group	Grade 12 Graduates of School Year		Year of Transition to a Community College ¹							
	2009/10		2010/11		2011/12		2012/13		2013/14	
	(#)	(%)	(#)	(%)	(#)	(%)	(#)	(%)	(#)	(%)
All Students	1944	100	360	19	35	2	14	1	3	0
Female	979	100	192	20	20	2	11	1	0	0
Male	965	100	168	17	15	2	3	0	3	0
Aboriginal	14	100	0	0	1	7	0	0	0	0
ELL	133	100	18	14	1	1	2	2	0	0
Special Needs	68	100	12	18	1	1	0	0	1	1

K-12 Non-Graduates Entering Community Colleges

Demographic Group	K-12 Non-Graduates of Year of Last Enrolment		Year of Transition to a Community College ¹							
	2009/10 ²		2010/11		2011/12		2012/13		2013/14	
	(#)	(%)	(#)	(%)	(#)	(%)	(#)	(%)	(#)	(%)
All Students	634	100	45	7	14	2	5	1	4	1
Female	327	100	22	7	11	3	4	1	2	1
Male	307	100	23	7	3	1	1	0	2	1
Aboriginal	12	100	1	8	0	0	0	0	1	8
ELL	78	100	8	10	3	4	0	0	0	0
Special Needs	48	100	2	4	0	0	0	0	2	4

¹ In recent years, numerous BC post-secondary institutions have changed their name and sector designation. Because of these changes, and to ensure consistency over time, each institution is reported under its most recent name and sector designation.

² Over time, the number of non-graduates may decrease as these students complete graduation requirements and are counted as part of the graduate population.

Student Transitions to BC Public Post-Secondary Institutions - 2013/14

038 - Richmond

Grade 12 Graduates Entering Institutes

Demographic Group	Grade 12 Graduates of School Year		Year of Transition to an Institute ¹							
	2009/10		2010/11		2011/12		2012/13		2013/14	
	(#)	(%)	(#)	(%)	(#)	(%)	(#)	(%)	(#)	(%)
All Students	1944	100	70	4	17	1	8	0	3	0
Female	979	100	9	1	3	0	0	0	0	0
Male	965	100	61	6	14	1	8	1	3	0
Aboriginal	14	100	0	0	0	0	0	0	0	0
ELL	133	100	3	2	0	0	0	0	0	0
Special Needs	68	100	5	7	2	3	0	0	0	0

K-12 Non-Graduates Entering Institutes

Demographic Group	K-12 Non-Graduates of Year of Last Enrolment		Year of Transition to an Institute ¹							
	2009/10 ²		2010/11		2011/12		2012/13		2013/14	
	(#)	(%)	(#)	(%)	(#)	(%)	(#)	(%)	(#)	(%)
All Students	634	100	17	3	4	1	2	0	2	0
Female	327	100	4	1	2	1	1	0	1	0
Male	307	100	13	4	2	1	1	0	1	0
Aboriginal	12	100	1	8	0	0	0	0	0	0
ELL	78	100	2	3	0	0	0	0	0	0
Special Needs	48	100	0	0	0	0	0	0	0	0

¹ In recent years, numerous BC post-secondary institutions have changed their name and sector designation. Because of these changes, and to ensure consistency over time, each institution is reported under its most recent name and sector designation.

² Over time, the number of non-graduates may decrease as these students complete graduation requirements and are counted as part of the graduate population.

Student Transitions to BC Public Post-Secondary Institutions - 2013/14

038 - Richmond

Grade 12 Graduates Entering Research-Intensive Universities

Demographic Group	Grade 12 Graduates of School Year		Year of Transition to a Research-Intensive University ¹							
	2009/10		2010/11		2011/12		2012/13		2013/14	
	(#)	(%)	(#)	(%)	(#)	(%)	(#)	(%)	(#)	(%)
All Students	1944	100	701	36	19	1	4	0	0	0
Female	979	100	379	39	8	1	2	0	0	0
Male	965	100	322	33	11	1	2	0	0	0
Aboriginal	14	100	4	29	0	0	0	0	0	0
ELL	133	100	58	44	4	3	0	0	0	0
Special Needs	68	100	22	32	0	0	1	1	0	0

K-12 Non-Graduates Entering Research-Intensive Universities

Demographic Group	K-12 Non-Graduates of Year of Last Enrolment		Year of Transition to a Research-Intensive University ¹							
	2009/10 ²		2010/11		2011/12		2012/13		2013/14	
	(#)	(%)	(#)	(%)	(#)	(%)	(#)	(%)	(#)	(%)
All Students	634	100	3	0	1	0	2	0	2	0
Female	327	100	0	0	1	0	1	0	1	0
Male	307	100	3	1	0	0	1	0	1	0
Aboriginal	12	100	0	0	0	0	0	0	0	0
ELL	78	100	2	3	0	0	0	0	0	0
Special Needs	48	100	0	0	0	0	0	0	0	0

¹ In recent years, numerous BC post-secondary institutions have changed their name and sector designation. Because of these changes, and to ensure consistency over time, each institution is reported under its most recent name and sector designation.

² Over time, the number of non-graduates may decrease as these students complete graduation requirements and are counted as part of the graduate population.

Student Transitions to BC Public Post-Secondary Institutions - 2013/14

038 - Richmond

Grade 12 Graduates Entering Teaching-Intensive Universities

Demographic Group	Grade 12 Graduates of School Year		Year of Transition to a Teaching-Intensive University ¹							
	2009/10		2010/11		2011/12		2012/13		2013/14	
	(#)	(%)	(#)	(%)	(#)	(%)	(#)	(%)	(#)	(%)
All Students	1944	100	324	17	26	1	14	1	3	0
Female	979	100	166	17	14	1	9	1	3	0
Male	965	100	158	16	12	1	5	1	0	0
Aboriginal	14	100	3	21	0	0	0	0	0	0
ELL	133	100	19	14	2	2	1	1	1	1
Special Needs	68	100	8	12	1	1	1	1	0	0

K-12 Non-Graduates Entering Teaching-Intensive Universities

Demographic Group	K-12 Non-Graduates of Year of Last Enrolment		Year of Transition to a Teaching-Intensive University ¹							
	2009/10 ²		2010/11		2011/12		2012/13		2013/14	
	(#)	(%)	(#)	(%)	(#)	(%)	(#)	(%)	(#)	(%)
All Students	634	100	48	8	8	1	2	0	2	0
Female	327	100	22	7	4	1	1	0	0	0
Male	307	100	26	8	4	1	1	0	2	1
Aboriginal	12	100	0	0	0	0	0	0	0	0
ELL	78	100	4	5	1	1	0	0	0	0
Special Needs	48	100	6	13	0	0	0	0	0	0

¹ In recent years, numerous BC post-secondary institutions have changed their name and sector designation. Because of these changes, and to ensure consistency over time, each institution is reported under its most recent name and sector designation.

² Over time, the number of non-graduates may decrease as these students complete graduation requirements and are counted as part of the graduate population.

Student Transitions to BC Public Post-Secondary Institutions - 2013/14

038 - Richmond

Grade 12 Graduates Enrolled in Post-Secondary within 3 Years

Grade 12 Graduates by Post-Secondary Program Area¹ (within 3 years of graduating K-12)

Grade 12 Graduation Year	Developmental Level		PSE Level		Total	
	(#)	(%)	(#)	(%)	(#)	(%)
2006/07	55	4	1450	96	1505	100
2007/08	47	3	1545	97	1592	100
2008/09	49	3	1462	97	1511	100
2009/10	30	2	1562	98	1592	100
2010/11	23	1	1525	99	1548	100

¹ A student is categorized as enrolled in either a developmental program or a post-secondary education ("PSE") level program, based on the first identified enrolment after graduating from K-12.

K-12 Non-Graduates Enrolled in Post-Secondary within 3 Years

K-12 Non-Graduates by Post-Secondary Program Area² (within 3 years of leaving K-12)

Year of Last Enrolment in the K-12 System	Developmental Level		PSE Level		Total	
	(#)	(%)	(#)	(%)	(#)	(%)
2006/07	52	42	73	58	125	100
2007/08	70	42	96	58	166	100
2008/09	47	40	71	60	118	100
2009/10	49	32	102	68	151	100
2010/11	60	39	92	61	152	100

² A student is categorized as enrolled in either a developmental program or a post-secondary education ("PSE") level program, based on the first identified enrolment after K-12.

Student Transitions to BC Public Post-Secondary Institutions - 2013/14

038 - Richmond

Grade 12 Graduates Enrolled in Post-Secondary within 3 Years

Grade 12 Graduate Enrolments by Post-Secondary Sector¹

Grade 12 Graduation Year	Community College (%)	Institute (%)	Research- Intensive University (%)	Teaching- Intensive University (%)	Total (%)
2006/07	17.3	7.6	47.0	28.1	100.0
2007/08	19.3	6.3	46.0	28.3	100.0
2008/09	19.7	4.8	47.7	27.9	100.0
2009/10	25.7	6.0	45.5	22.9	100.0
2010/11	26.7	5.8	43.4	24.1	100.0

K-12 Non-Graduates Enrolled in Post-Secondary within 3 Years

K-12 Non-Graduate Enrolments by Post-Secondary Sector¹

Year of Last Enrolment in the K-12 System	Community College (%)	Institute (%)	Research- Intensive University (%)	Teaching- Intensive University (%)	Total (%)
2006/07	36.0	14.4	5.6	44.0	100.0
2007/08	39.8	14.5	3.6	42.2	100.0
2008/09	36.4	17.8	5.9	39.8	100.0
2009/10	42.4	15.2	4.0	38.4	100.0
2010/11	38.2	17.8	5.9	38.2	100.0

¹ In recent years, numerous BC post-secondary institutions have changed their name and sector designation. Because of these changes, and to ensure consistency over time, each institution is reported under its most recent name and sector designation.

Student Transitions to BC Public Post-Secondary Institutions - 2013/14

038 - Richmond

Grade 12 Graduate Transitions into Post-Secondary within 3 Years¹

Sector	Post-Secondary Institution	Grade 12 Graduation Year 2010/11	
		(#)	(%)
Community College	Camosun College	0	0.0
	College Of New Caledonia	1	0.1
	College Of The Rockies	0	0.0
	Douglas College	21	1.4
	Langara College	355	22.9
	North Island College	0	0.0
	Northern Lights College	0	0.0
	Northwest Community College	0	0.0
	Okanagan College	0	0.0
	Selkirk College	1	0.1
	Vancouver Community College	35	2.3
	Subtotal	413	26.7
Institute	British Columbia Institute Of Technology	90	5.8
	Justice Institute Of British Columbia	0	0.0
	Nicola Valley Institute Of Technology	0	0.0
	Subtotal	90	5.8
Research-Intensive University	Simon Fraser University	188	12.1
	University Of British Columbia	389	25.1
	University Of British Columbia Okanagan	39	2.5
	University Of Northern British Columbia	2	0.1
	University Of Victoria	54	3.5
	Subtotal	672	43.4
Teaching-Intensive University	Capilano University	13	0.8
	Emily Carr University Of Art and Design	14	0.9
	Kwantlen Polytechnic University	333	21.5
	Royal Roads University	0	0.0
	Thompson Rivers University	12	0.8
	University Of The Fraser Valley	0	0.0
	Vancouver Island University	1	0.1
	Subtotal	373	24.1
	Total	1,548	100.0

¹ In recent years, numerous BC post-secondary institutions have changed their name and sector designation. Because of these changes, and to ensure consistency over time, each institution is reported under its most recent name and sector designation.

Student Transitions to BC Public Post-Secondary Institutions - 2013/14

038 - Richmond

K-12 Non-Graduate Transitions into Post-Secondary within 3 Years¹

Sector	Post-Secondary Institution	Year of Last Enrolment in K-12 2010/11	
		(#)	(%)
Community College	Camosun College	2	1.3
	College Of New Caledonia	0	0.0
	College Of The Rockies	0	0.0
	Douglas College	4	2.6
	Langara College	22	14.5
	North Island College	0	0.0
	Northern Lights College	0	0.0
	Northwest Community College	0	0.0
	Okanagan College	0	0.0
	Selkirk College	1	0.7
	Vancouver Community College	29	19.1
	Subtotal	58	38.2
Institute	British Columbia Institute Of Technology	25	16.4
	Justice Institute Of British Columbia	2	1.3
	Nicola Valley Institute Of Technology	0	0.0
	Subtotal	27	17.8
Research-Intensive University	Simon Fraser University	4	2.6
	University Of British Columbia	5	3.3
	University Of British Columbia Okanagan	0	0.0
	University Of Northern British Columbia	0	0.0
	University Of Victoria	0	0.0
	Subtotal	9	5.9
Teaching-Intensive University	Capilano University	0	0.0
	Emily Carr University Of Art and Design	1	0.7
	Kwantlen Polytechnic University	56	36.8
	Royal Roads University	0	0.0
	Thompson Rivers University	1	0.7
	University Of The Fraser Valley	0	0.0
	Vancouver Island University	0	0.0
	Subtotal	58	38.2
	Total	152	100.0

¹ In recent years, numerous BC post-secondary institutions have changed their name and sector designation. Because of these changes, and to ensure consistency over time, each institution is reported under its most recent name and sector designation.

Student Transitions to BC Public Post-Secondary Institutions - 2013/14

038 - Richmond

Post-Secondary Credentials of Grade 12 Graduates

Post-Secondary Credential	PSI School Year 2013/14	
	(#)	(%)
Advanced Certificate	21	1.2
Advanced Diploma	0	0.0
Apprenticeship	3	0.2
Associate Degree	49	2.8
Bachelors Degree	924	53.4
Certificate	256	14.8
Developmental Credential	5	0.3
Diploma	306	17.7
Doctorate	1	0.1
First Professional Degree	18	1.0
Graduate Certificate	3	0.2
Graduate Diploma	5	0.3
Masters Degree	84	4.9
Other	4	0.2
Post-Degree Certificate	1	0.1
Post-Degree Diploma	26	1.5
Short Certificate	25	1.4
Total Post-Secondary Credentials	1731	100.0

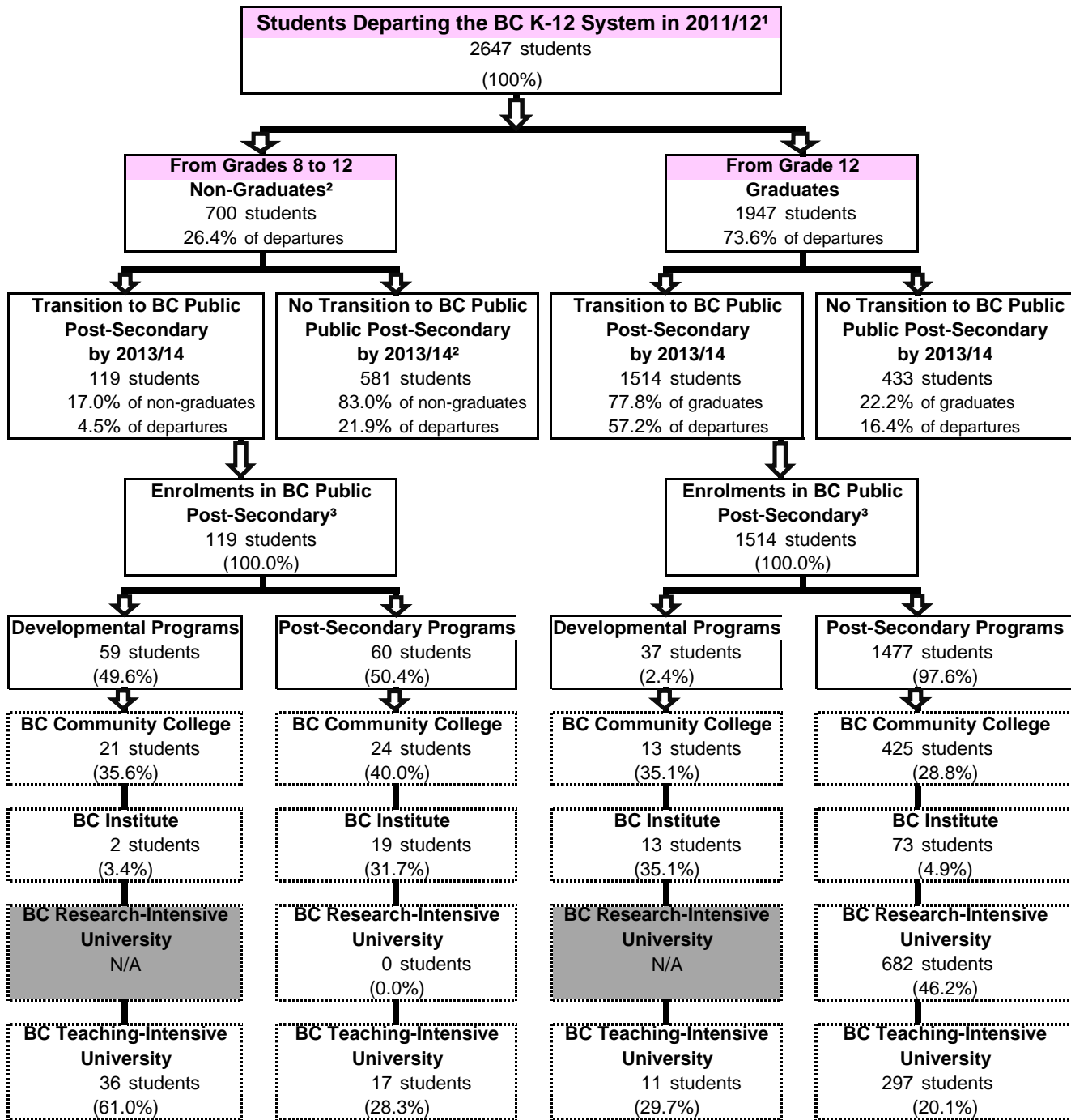
Post-Secondary Credentials of K-12 Non-Graduates

Post-Secondary Credential	PSI School Year 2013/14	
	(#)	(%)
Advanced Certificate	1	1.0
Advanced Diploma	0	0.0
Apprenticeship	1	1.0
Associate Degree	1	1.0
Bachelors Degree	20	19.6
Certificate	37	36.3
Developmental Credential	5	4.9
Diploma	28	27.5
Doctorate	0	0.0
First Professional Degree	0	0.0
Graduate Certificate	0	0.0
Graduate Diploma	1	1.0
Masters Degree	1	1.0
Other	0	0.0
Post-Degree Certificate	0	0.0
Post-Degree Diploma	0	0.0
Short Certificate	7	6.9
Total Post-Secondary Credentials	102	100.0

Student Transitions to BC Public Post-Secondary Institutions - 2013/14

038 - Richmond

Annual Outflow of Students, K-12



1 This allows for analysis of two complete academic years after students depart from the K-12 system. 'Departures' include grade 12 graduates, and non-graduates who left at some point during their grade 8 to grade 12 school years.

2 Non-graduates are identified by the last year they were seen in the K-12 system. Non-graduates may have been last seen in grades 8 to 12.

The numbers for non-graduates are unadjusted for outmigration - some may have moved to and graduated in other jurisdictions. Over time, the number of non-graduates may decrease as students complete graduation requirements and are counted as graduates.

3 In recent years, numerous BC post-secondary institutions have changed their name and sector designation. Because of these changes, and to ensure consistency over time, each institution is reported under its most recent name and sector designation.