

Student Transitions to BC Public Post-Secondary Institutions - 2013/14

037 - Delta

Preface

This report includes data from the BC Ministry of Education (MED) K-12 system combined with BC post-secondary data compiled by the Student Transitions Project (STP).

Definitions used are in accordance with MED public reporting data definitions and consequently figures may differ from those stated within STP reports.

This report includes all graduates, using a definition that is more broad than the “eligible to graduate” definition used in many STP reports. It also includes all non-graduates, both those who transitioned to a BC public post-secondary institution (PSI) and those who did not.

In the 2010/11 and 2011/12 reports, students who leave the BC school system in Kindergarten or in Grades 1 to 7 are no longer included in the counts of non-graduates. This removes younger students who are more likely to have moved to a school in another jurisdiction than they are to have dropped out. The main effect of this change, compared to the 2009/10 report, is a drop in the counts of non-graduates who do not transition to a PSI, since very few of those last seen in these lower grades do transition to a PSI.

A problem was identified in previous STP data where some students in developmental program areas were mapped to post-secondary education (PSE) study levels. This means that the reported counts of students in developmental level programs were low while the counts of students in PSE level programs were inflated. The underlying definition has now been changed. The effect of this change, compared to the 2009/10 report, is an increase in the counts of students in developmental level programs and a decrease in the counts of students in PSE level programs (pages 8 and 13).

Student Transitions to BC Public Post-Secondary Institutions - 2013/14

037 - Delta

Grade 12 Graduates by Post-Secondary Institution Entry Year

K-12 Graduation Year	Post-Secondary Entry Year					Total Grade 12 Graduates (#)
	2009/10 (# and %)	2010/11 (# and %)	2011/12 (# and %)	2012/13 (# and %)	2013/14 (# and %)	
2008/09	795 (59.4%)	111 (8.3%)	54 (4.0%)	31 (2.3%)	20 (1.5%)	1339
2009/10		777 (58.5%)	137 (10.3%)	61 (4.6%)	26 (2.0%)	1328
2010/11			829 (59.8%)	128 (9.2%)	66 (4.8%)	1387
2011/12				842 (61.1%)	132 (9.6%)	1377
2012/13					838 (58.2%)	1439

K-12 Non-Graduates by Post-Secondary Institution Entry Year

Year of Last Enrolment in the K-12 System	Post-Secondary Entry Year					Total Non-Graduates (#) ¹
	2009/10 (# and %)	2010/11 (# and %)	2011/12 (# and %)	2012/13 (# and %)	2013/14 (# and %)	
2008/09	40 (6.1%)	19 (2.9%)	9 (1.4%)	11 (1.7%)	10 (1.5%)	652
2009/10		44 (6.5%)	18 (2.6%)	11 (1.6%)	10 (1.5%)	680
2010/11			45 (7.4%)	15 (2.5%)	8 (1.3%)	605
2011/12				31 (6.0%)	20 (3.9%)	516
2012/13					37 (6.8%)	548

¹ Over time, the number of non-graduates may decrease as these students complete graduation requirements and are counted as part of the graduate population.

Student Transitions to BC Public Post-Secondary Institutions - 2013/14

037 - Delta

Grade 12 Graduates by Demographic Group

Demographic Group	Grade 12 Graduates of School Year		Year of Transition to a Post-Secondary Institution							
	2009/10		2010/11		2011/12		2012/13		2013/14	
	(#)	(%)	(#)	(%)	(#)	(%)	(#)	(%)	(#)	(%)
All Students	1328	100	777	59	137	10	61	5	26	2
Female	656	100	414	63	49	7	34	5	13	2
Male	672	100	363	54	88	13	27	4	13	2
Aboriginal	35	100	12	34	4	11	4	11	1	3
ELL	20	100	14	70	3	15	0	0	1	5
Special Needs	155	100	69	45	15	10	10	6	2	1

K-12 Non-Graduates by Demographic Group

Demographic Group	K-12 Non-Graduates of Year of Last Enrolment		Year of Transition to a Post-Secondary Institution							
	2009/10 ¹		2010/11		2011/12		2012/13		2013/14	
	(#)	(%)	(#)	(%)	(#)	(%)	(#)	(%)	(#)	(%)
All Students	680	100	44	6	18	3	11	2	10	1
Female	349	100	25	7	11	3	4	1	5	1
Male	331	100	19	6	7	2	7	2	5	2
Aboriginal	21	100	0	0	0	0	0	0	0	0
ELL	13	100	0	0	1	8	0	0	0	0
Special Needs	76	100	4	5	0	0	1	1	1	1

¹ Over time, the number of non-graduates may decrease as these students complete graduation requirements and are counted as part of the graduate population.

Student Transitions to BC Public Post-Secondary Institutions - 2013/14

037 - Delta

Grade 12 Graduates Entering Community Colleges

Demographic Group	Grade 12 Graduates of School Year		Year of Transition to a Community College ¹							
	2009/10		2010/11		2011/12		2012/13		2013/14	
	(#)	(%)	(#)	(%)	(#)	(%)	(#)	(%)	(#)	(%)
All Students	1328	100	173	13	55	4	25	2	12	1
Female	656	100	96	15	22	3	16	2	9	1
Male	672	100	77	11	33	5	9	1	3	0
Aboriginal	35	100	5	14	2	6	1	3	0	0
ELL	20	100	1	5	1	5	0	0	1	5
Special Needs	155	100	16	10	4	3	5	3	2	1

K-12 Non-Graduates Entering Community Colleges

Demographic Group	K-12 Non-Graduates of Year of Last Enrolment		Year of Transition to a Community College ¹							
	2009/10 ²		2010/11		2011/12		2012/13		2013/14	
	(#)	(%)	(#)	(%)	(#)	(%)	(#)	(%)	(#)	(%)
All Students	680	100	14	2	10	1	7	1	4	1
Female	349	100	7	2	7	2	2	1	3	1
Male	331	100	7	2	3	1	5	2	1	0
Aboriginal	21	100	0	0	0	0	0	0	0	0
ELL	13	100	0	0	0	0	0	0	0	0
Special Needs	76	100	1	1	0	0	1	1	0	0

¹ In recent years, numerous BC post-secondary institutions have changed their name and sector designation. Because of these changes, and to ensure consistency over time, each institution is reported under its most recent name and sector designation.

² Over time, the number of non-graduates may decrease as these students complete graduation requirements and are counted as part of the graduate population.

Student Transitions to BC Public Post-Secondary Institutions - 2013/14

037 - Delta

Grade 12 Graduates Entering Institutes

Demographic Group	Grade 12 Graduates of School Year		Year of Transition to an Institute ¹							
	2009/10		2010/11		2011/12		2012/13		2013/14	
	(#)	(%)	(#)	(%)	(#)	(%)	(#)	(%)	(#)	(%)
All Students	1328	100	39	3	26	2	9	1	10	1
Female	656	100	6	1	3	0	2	0	2	0
Male	672	100	33	5	23	3	7	1	8	1
Aboriginal	35	100	1	3	0	0	1	3	1	3
ELL	20	100	1	5	1	5	0	0	0	0
Special Needs	155	100	5	3	4	3	2	1	0	0

K-12 Non-Graduates Entering Institutes

Demographic Group	K-12 Non-Graduates of Year of Last Enrolment		Year of Transition to an Institute ¹							
	2009/10 ²		2010/11		2011/12		2012/13		2013/14	
	(#)	(%)	(#)	(%)	(#)	(%)	(#)	(%)	(#)	(%)
All Students	680	100	13	2	4	1	1	0	4	1
Female	349	100	6	2	1	0	0	0	1	0
Male	331	100	7	2	3	1	1	0	3	1
Aboriginal	21	100	0	0	0	0	0	0	0	0
ELL	13	100	0	0	1	8	0	0	0	0
Special Needs	76	100	1	1	0	0	0	0	1	1

¹ In recent years, numerous BC post-secondary institutions have changed their name and sector designation. Because of these changes, and to ensure consistency over time, each institution is reported under its most recent name and sector designation.

² Over time, the number of non-graduates may decrease as these students complete graduation requirements and are counted as part of the graduate population.

Student Transitions to BC Public Post-Secondary Institutions - 2013/14

037 - Delta

Grade 12 Graduates Entering Research-Intensive Universities

Demographic Group	Grade 12 Graduates of School Year		Year of Transition to a Research-Intensive University ¹							
	2009/10		2010/11		2011/12		2012/13		2013/14	
	(#)	(%)	(#)	(%)	(#)	(%)	(#)	(%)	(#)	(%)
All Students	1328	100	259	20	12	1	3	0	3	0
Female	656	100	142	22	6	1	1	0	1	0
Male	672	100	117	17	6	1	2	0	2	0
Aboriginal	35	100	2	6	0	0	0	0	0	0
ELL	20	100	5	25	0	0	0	0	0	0
Special Needs	155	100	16	10	1	1	0	0	0	0

K-12 Non-Graduates Entering Research-Intensive Universities

Demographic Group	K-12 Non-Graduates of Year of Last Enrolment		Year of Transition to a Research-Intensive University ¹							
	2009/10 ²		2010/11		2011/12		2012/13		2013/14	
	(#)	(%)	(#)	(%)	(#)	(%)	(#)	(%)	(#)	(%)
All Students	680	100	2	0	1	0	2	0	1	0
Female	349	100	2	1	1	0	1	0	1	0
Male	331	100	0	0	0	0	1	0	0	0
Aboriginal	21	100	0	0	0	0	0	0	0	0
ELL	13	100	0	0	0	0	0	0	0	0
Special Needs	76	100	0	0	0	0	0	0	0	0

¹ In recent years, numerous BC post-secondary institutions have changed their name and sector designation. Because of these changes, and to ensure consistency over time, each institution is reported under its most recent name and sector designation.

² Over time, the number of non-graduates may decrease as these students complete graduation requirements and are counted as part of the graduate population.

Student Transitions to BC Public Post-Secondary Institutions - 2013/14

037 - Delta

Grade 12 Graduates Entering Teaching-Intensive Universities

Demographic Group	Grade 12 Graduates of School Year		Year of Transition to a Teaching-Intensive University ¹							
	2009/10		2010/11		2011/12		2012/13		2013/14	
	(#)	(%)	(#)	(%)	(#)	(%)	(#)	(%)	(#)	(%)
All Students	1328	100	306	23	44	3	24	2	1	0
Female	656	100	170	26	18	3	15	2	1	0
Male	672	100	136	20	26	4	9	1	0	0
Aboriginal	35	100	4	11	2	6	2	6	0	0
ELL	20	100	7	35	1	5	0	0	0	0
Special Needs	155	100	32	21	6	4	3	2	0	0

K-12 Non-Graduates Entering Teaching-Intensive Universities

Demographic Group	K-12 Non-Graduates of Year of Last Enrolment		Year of Transition to a Teaching-Intensive University ¹							
	2009/10 ²		2010/11		2011/12		2012/13		2013/14	
	(#)	(%)	(#)	(%)	(#)	(%)	(#)	(%)	(#)	(%)
All Students	680	100	15	2	3	0	1	0	1	0
Female	349	100	10	3	2	1	1	0	0	0
Male	331	100	5	2	1	0	0	0	1	0
Aboriginal	21	100	0	0	0	0	0	0	0	0
ELL	13	100	0	0	0	0	0	0	0	0
Special Needs	76	100	2	3	0	0	0	0	0	0

¹ In recent years, numerous BC post-secondary institutions have changed their name and sector designation. Because of these changes, and to ensure consistency over time, each institution is reported under its most recent name and sector designation.

² Over time, the number of non-graduates may decrease as these students complete graduation requirements and are counted as part of the graduate population.

Student Transitions to BC Public Post-Secondary Institutions - 2013/14

037 - Delta

Grade 12 Graduates Enrolled in Post-Secondary within 3 Years

Grade 12 Graduates by Post-Secondary Program Area¹ (within 3 years of graduating K-12)

Grade 12 Graduation Year	Developmental Level		PSE Level		Total	
	(#)	(%)	(#)	(%)	(#)	(%)
2006/07	33	4	813	96	846	100
2007/08	31	3	880	97	911	100
2008/09	37	4	923	96	960	100
2009/10	31	3	944	97	975	100
2010/11	31	3	992	97	1023	100

¹ A student is categorized as enrolled in either a developmental program or a post-secondary education ("PSE") level program, based on the first identified enrolment after graduating from K-12.

K-12 Non-Graduates Enrolled in Post-Secondary within 3 Years

K-12 Non-Graduates by Post-Secondary Program Area² (within 3 years of leaving K-12)

Year of Last Enrolment in the K-12 System	Developmental Level		PSE Level		Total	
	(#)	(%)	(#)	(%)	(#)	(%)
2006/07	16	28	42	72	58	100
2007/08	24	34	46	66	70	100
2008/09	14	21	54	79	68	100
2009/10	19	26	54	74	73	100
2010/11	21	31	47	69	68	100

² A student is categorized as enrolled in either a developmental program or a post-secondary education ("PSE") level program, based on the first identified enrolment after K-12.

Student Transitions to BC Public Post-Secondary Institutions - 2013/14

037 - Delta

Grade 12 Graduates Enrolled in Post-Secondary within 3 Years

Grade 12 Graduate Enrolments by Post-Secondary Sector¹

Grade 12 Graduation Year	Community College (%)	Institute (%)	Research- Intensive University (%)	Teaching- Intensive University (%)	Total (%)
2006/07	18.6	11.1	31.0	39.4	100.0
2007/08	22.7	11.1	27.6	38.6	100.0
2008/09	20.8	10.0	29.8	39.4	100.0
2009/10	25.9	7.6	28.1	38.4	100.0
2010/11	27.6	8.7	28.6	35.1	100.0

K-12 Non-Graduates Enrolled in Post-Secondary within 3 Years

K-12 Non-Graduate Enrolments by Post-Secondary Sector¹

Year of Last Enrolment in the K-12 System	Community College (%)	Institute (%)	Research- Intensive University (%)	Teaching- Intensive University (%)	Total (%)
2006/07	43.1	25.9	1.7	29.3	100.0
2007/08	40.0	14.3	2.9	42.9	100.0
2008/09	36.8	32.4	2.9	27.9	100.0
2009/10	42.5	24.7	6.8	26.0	100.0
2010/11	47.1	25.0	1.5	26.5	100.0

¹ In recent years, numerous BC post-secondary institutions have changed their name and sector designation. Because of these changes, and to ensure consistency over time, each institution is reported under its most recent name and sector designation.

Student Transitions to BC Public Post-Secondary Institutions - 2013/14

037 - Delta

Grade 12 Graduate Transitions into Post-Secondary within 3 Years¹

Sector	Post-Secondary Institution	Grade 12 Graduation Year 2010/11	
		(#)	(%)
Community College	Camosun College	8	0.8
	College Of New Caledonia	1	0.1
	College Of The Rockies	0	0.0
	Douglas College	121	11.8
	Langara College	110	10.8
	North Island College	0	0.0
	Northern Lights College	2	0.2
	Northwest Community College	0	0.0
	Okanagan College	7	0.7
	Selkirk College	0	0.0
	Vancouver Community College	33	3.2
	Subtotal	282	27.6
Institute	British Columbia Institute Of Technology	80	7.8
	Justice Institute Of British Columbia	7	0.7
	Nicola Valley Institute Of Technology	2	0.2
	Subtotal	89	8.7
Research-Intensive University	Simon Fraser University	114	11.1
	University Of British Columbia	112	10.9
	University Of British Columbia Okanagan	23	2.2
	University Of Northern British Columbia	0	0.0
	University Of Victoria	44	4.3
	Subtotal	293	28.6
Teaching-Intensive University	Capilano University	14	1.4
	Emily Carr University Of Art and Design	5	0.5
	Kwantlen Polytechnic University	328	32.1
	Royal Roads University	0	0.0
	Thompson Rivers University	8	0.8
	University Of The Fraser Valley	3	0.3
	Vancouver Island University	1	0.1
	Subtotal	359	35.1
	Total	1,023	100.0

¹ In recent years, numerous BC post-secondary institutions have changed their name and sector designation. Because of these changes, and to ensure consistency over time, each institution is reported under its most recent name and sector designation.

Student Transitions to BC Public Post-Secondary Institutions - 2013/14

037 - Delta

K-12 Non-Graduate Transitions into Post-Secondary within 3 Years¹

Sector	Post-Secondary Institution	Year of Last Enrolment in K-12 2010/11	
		(#)	(%)
Community College	Camosun College	0	0.0
	College Of New Caledonia	0	0.0
	College Of The Rockies	0	0.0
	Douglas College	11	16.2
	Langara College	6	8.8
	North Island College	0	0.0
	Northern Lights College	0	0.0
	Northwest Community College	1	1.5
	Okanagan College	1	1.5
	Selkirk College	0	0.0
	Vancouver Community College	13	19.1
	Subtotal	32	47.1
Institute	British Columbia Institute Of Technology	13	19.1
	Justice Institute Of British Columbia	4	5.9
	Nicola Valley Institute Of Technology	0	0.0
	Subtotal	17	25.0
Research-Intensive University	Simon Fraser University	1	1.5
	University Of British Columbia	0	0.0
	University Of British Columbia Okanagan	0	0.0
	University Of Northern British Columbia	0	0.0
	University Of Victoria	0	0.0
	Subtotal	1	1.5
Teaching-Intensive University	Capilano University	0	0.0
	Emily Carr University Of Art and Design	0	0.0
	Kwantlen Polytechnic University	17	25.0
	Royal Roads University	1	1.5
	Thompson Rivers University	0	0.0
	University Of The Fraser Valley	0	0.0
	Vancouver Island University	0	0.0
	Subtotal	18	26.5
	Total	68	100.0

¹ In recent years, numerous BC post-secondary institutions have changed their name and sector designation. Because of these changes, and to ensure consistency over time, each institution is reported under its most recent name and sector designation.

Student Transitions to BC Public Post-Secondary Institutions - 2013/14

037 - Delta

Post-Secondary Credentials of Grade 12 Graduates

Post-Secondary Credential	PSI School Year 2013/14	
	(#)	(%)
Advanced Certificate	14	1.3
Advanced Diploma	4	0.4
Apprenticeship	4	0.4
Associate Degree	22	2.0
Bachelors Degree	508	45.8
Certificate	250	22.5
Developmental Credential	6	0.5
Diploma	181	16.3
Doctorate	4	0.4
First Professional Degree	11	1.0
Graduate Certificate	1	0.1
Graduate Diploma	5	0.5
Masters Degree	48	4.3
Other	2	0.2
Post-Degree Certificate	0	0.0
Post-Degree Diploma	14	1.3
Short Certificate	35	3.2
Total Post-Secondary Credentials	1109	100.0

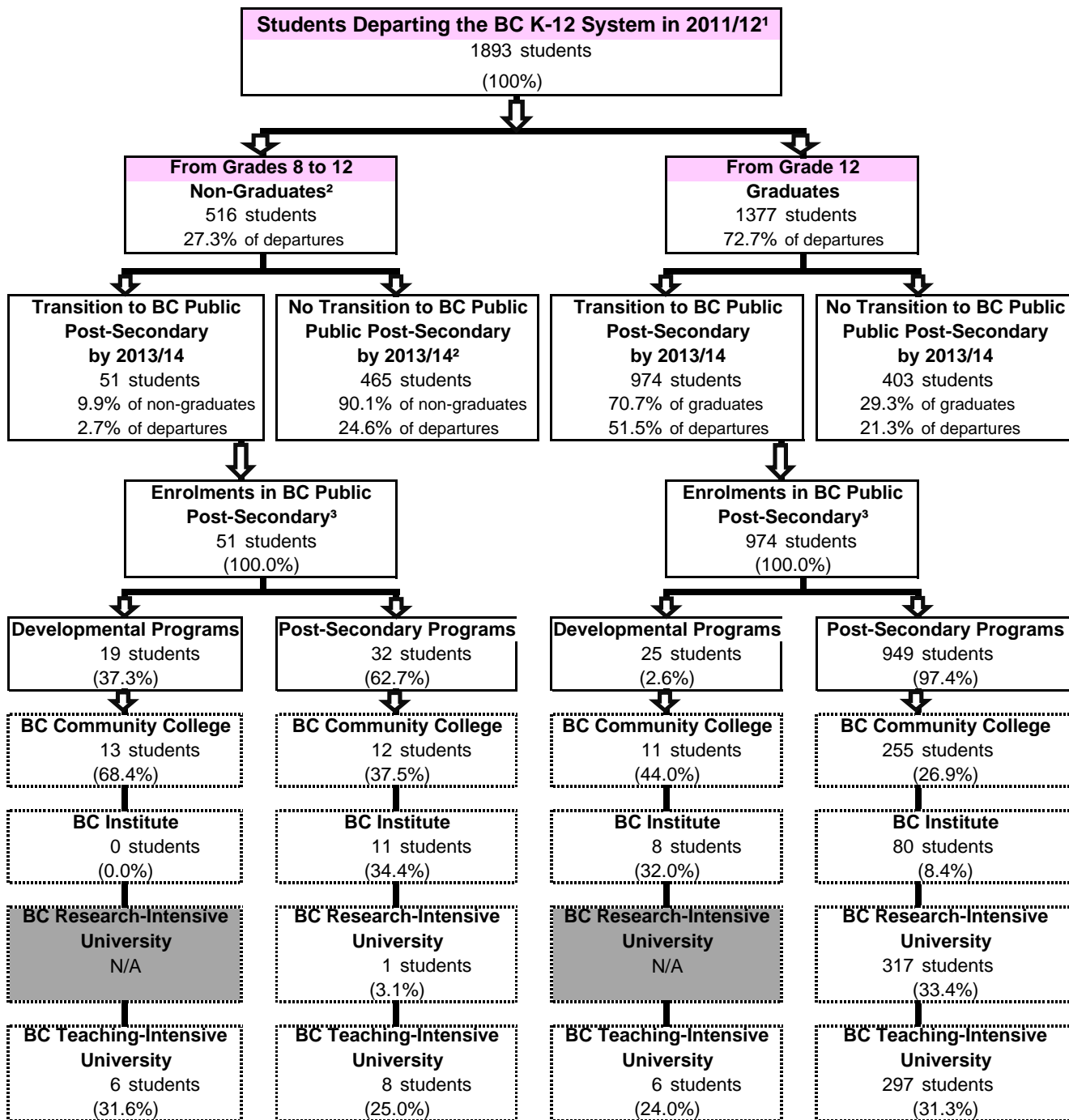
Post-Secondary Credentials of K-12 Non-Graduates

Post-Secondary Credential	PSI School Year 2013/14	
	(#)	(%)
Advanced Certificate	0	0.0
Advanced Diploma	0	0.0
Apprenticeship	0	0.0
Associate Degree	0	0.0
Bachelors Degree	5	10.6
Certificate	18	38.3
Developmental Credential	6	12.8
Diploma	5	10.6
Doctorate	1	2.1
First Professional Degree	0	0.0
Graduate Certificate	1	2.1
Graduate Diploma	0	0.0
Masters Degree	1	2.1
Other	0	0.0
Post-Degree Certificate	0	0.0
Post-Degree Diploma	0	0.0
Short Certificate	10	21.3
Total Post-Secondary Credentials	47	100.0

Student Transitions to BC Public Post-Secondary Institutions - 2013/14

037 - Delta

Annual Outflow of Students, K-12



1 This allows for analysis of two complete academic years after students depart from the K-12 system. 'Departures' include grade 12 graduates, and non-graduates who left at some point during their grade 8 to grade 12 school years.

2 Non-graduates are identified by the last year they were seen in the K-12 system. Non-graduates may have been last seen in grades 8 to 12.

The numbers for non-graduates are unadjusted for outmigration - some may have moved to and graduated in other jurisdictions. Over time, the number of non-graduates may decrease as students complete graduation requirements and are counted as graduates.

3 In recent years, numerous BC post-secondary institutions have changed their name and sector designation. Because of these changes, and to ensure consistency over time, each institution is reported under its most recent name and sector designation.