

Student Transitions to BC Public Post-Secondary Institutions - 2013/14

008 - Kootenay Lake

Preface

This report includes data from the BC Ministry of Education (MED) K-12 system combined with BC post-secondary data compiled by the Student Transitions Project (STP).

Definitions used are in accordance with MED public reporting data definitions and consequently figures may differ from those stated within STP reports.

This report includes all graduates, using a definition that is more broad than the “eligible to graduate” definition used in many STP reports. It also includes all non-graduates, both those who transitioned to a BC public post-secondary institution (PSI) and those who did not.

In the 2010/11 and 2011/12 reports, students who leave the BC school system in Kindergarten or in Grades 1 to 7 are no longer included in the counts of non-graduates. This removes younger students who are more likely to have moved to a school in another jurisdiction than they are to have dropped out. The main effect of this change, compared to the 2009/10 report, is a drop in the counts of non-graduates who do not transition to a PSI, since very few of those last seen in these lower grades do transition to a PSI.

A problem was identified in previous STP data where some students in developmental program areas were mapped to post-secondary education (PSE) study levels. This means that the reported counts of students in developmental level programs were low while the counts of students in PSE level programs were inflated. The underlying definition has now been changed. The effect of this change, compared to the 2009/10 report, is an increase in the counts of students in developmental level programs and a decrease in the counts of students in PSE level programs (pages 8 and 13).

Student Transitions to BC Public Post-Secondary Institutions - 2013/14

008 - Kootenay Lake

Grade 12 Graduates by Post-Secondary Institution Entry Year

K-12 Graduation Year	Post-Secondary Entry Year					Total Grade 12 Graduates (#)
	2009/10 (# and %)	2010/11 (# and %)	2011/12 (# and %)	2012/13 (# and %)	2013/14 (# and %)	
2008/09	175 (40.3%)	73 (16.8%)	26 (6.0%)	18 (4.1%)	19 (4.4%)	434
2009/10		156 (39.0%)	62 (15.5%)	24 (6.0%)	13 (3.3%)	400
2010/11			184 (44.9%)	52 (12.7%)	22 (5.4%)	410
2011/12				165 (42.9%)	59 (15.3%)	385
2012/13					164 (45.3%)	362

K-12 Non-Graduates by Post-Secondary Institution Entry Year

Year of Last Enrolment in the K-12 System	Post-Secondary Entry Year					Total Non-Graduates (#) ¹
	2009/10 (# and %)	2010/11 (# and %)	2011/12 (# and %)	2012/13 (# and %)	2013/14 (# and %)	
2008/09	38 (17.7%)	12 (5.6%)	16 (7.4%)	8 (3.7%)	6 (2.8%)	215
2009/10		45 (19.5%)	16 (6.9%)	7 (3.0%)	9 (3.9%)	231
2010/11			78 (24.1%)	17 (5.2%)	8 (2.5%)	324
2011/12				47 (17.2%)	14 (5.1%)	274
2012/13					58 (19.0%)	305

¹ Over time, the number of non-graduates may decrease as these students complete graduation requirements and are counted as part of the graduate population.

Student Transitions to BC Public Post-Secondary Institutions - 2013/14

008 - Kootenay Lake

Grade 12 Graduates by Demographic Group

Demographic Group	Grade 12 Graduates of School Year		Year of Transition to a Post-Secondary Institution							
	2009/10		2010/11		2011/12		2012/13		2013/14	
	(#)	(%)	(#)	(%)	(#)	(%)	(#)	(%)	(#)	(%)
All Students	400	100	156	39	62	16	24	6	13	3
Female	201	100	69	34	38	19	10	5	6	3
Male	199	100	87	44	24	12	14	7	7	4
Aboriginal	48	100	20	42	6	13	1	2	3	6
ELL	Msk	100	Msk	Msk	Msk	Msk	Msk	Msk	Msk	Msk
Special Needs	23	100	12	52	2	9	0	0	2	9

K-12 Non-Graduates by Demographic Group

Demographic Group	K-12 Non-Graduates of Year of Last Enrolment		Year of Transition to a Post-Secondary Institution							
	2009/10 ¹		2010/11		2011/12		2012/13		2013/14	
	(#)	(%)	(#)	(%)	(#)	(%)	(#)	(%)	(#)	(%)
All Students	231	100	45	19	16	7	7	3	9	4
Female	138	100	27	20	14	10	3	2	6	4
Male	93	100	18	19	2	2	4	4	3	3
Aboriginal	27	100	5	19	2	7	1	4	1	4
ELL	20	100	0	0	1	5	0	0	0	0
Special Needs	13	100	3	23	1	8	0	0	2	15

¹ Over time, the number of non-graduates may decrease as these students complete graduation requirements and are counted as part of the graduate population.

Student Transitions to BC Public Post-Secondary Institutions - 2013/14

008 - Kootenay Lake

Grade 12 Graduates Entering Community Colleges

Demographic Group	Grade 12 Graduates of School Year		Year of Transition to a Community College ¹							
	2009/10		2010/11		2011/12		2012/13		2013/14	
	(#)	(%)	(#)	(%)	(#)	(%)	(#)	(%)	(#)	(%)
All Students	400	100	115	29	50	13	19	5	13	3
Female	201	100	51	25	29	14	7	3	6	3
Male	199	100	64	32	21	11	12	6	7	4
Aboriginal	48	100	14	29	6	13	1	2	3	6
ELL	Msk	100	Msk	Msk	Msk	Msk	Msk	Msk	Msk	Msk
Special Needs	23	100	11	48	1	4	0	0	2	9

K-12 Non-Graduates Entering Community Colleges

Demographic Group	K-12 Non-Graduates of Year of Last Enrolment		Year of Transition to a Community College ¹							
	2009/10 ²		2010/11		2011/12		2012/13		2013/14	
	(#)	(%)	(#)	(%)	(#)	(%)	(#)	(%)	(#)	(%)
All Students	231	100	41	18	13	6	7	3	8	3
Female	138	100	23	17	12	9	3	2	5	4
Male	93	100	18	19	1	1	4	4	3	3
Aboriginal	27	100	5	19	2	7	1	4	0	0
ELL	20	100	0	0	0	0	0	0	0	0
Special Needs	13	100	3	23	1	8	0	0	2	15

¹ In recent years, numerous BC post-secondary institutions have changed their name and sector designation. Because of these changes, and to ensure consistency over time, each institution is reported under its most recent name and sector designation.

² Over time, the number of non-graduates may decrease as these students complete graduation requirements and are counted as part of the graduate population.

Student Transitions to BC Public Post-Secondary Institutions - 2013/14

008 - Kootenay Lake

Grade 12 Graduates Entering Institutes

Demographic Group	Grade 12 Graduates of School Year		Year of Transition to an Institute ¹								
	2009/10		2010/11		2011/12		2012/13		2013/14		
	(#)	(%)	(#)	(%)	(#)	(%)	(#)	(%)	(#)	(%)	
All Students	400	100	2	1	1	0	0	0	0	0	0
Female	201	100	1	0	0	0	0	0	0	0	0
Male	199	100	1	1	1	1	0	0	0	0	0
Aboriginal	48	100	0	0	0	0	0	0	0	0	0
ELL	Msk	100	Msk	Msk	Msk	Msk	Msk	Msk	Msk	Msk	Msk
Special Needs	23	100	0	0	1	4	0	0	0	0	0

K-12 Non-Graduates Entering Institutes

Demographic Group	K-12 Non-Graduates of Year of Last Enrolment		Year of Transition to an Institute ¹								
	2009/10 ²		2010/11		2011/12		2012/13		2013/14		
	(#)	(%)	(#)	(%)	(#)	(%)	(#)	(%)	(#)	(%)	
All Students	231	100	1	0	1	0	0	0	0	0	0
Female	138	100	1	1	1	1	0	0	0	0	0
Male	93	100	0	0	0	0	0	0	0	0	0
Aboriginal	27	100	0	0	0	0	0	0	0	0	0
ELL	20	100	0	0	0	0	0	0	0	0	0
Special Needs	13	100	0	0	0	0	0	0	0	0	0

¹ In recent years, numerous BC post-secondary institutions have changed their name and sector designation. Because of these changes, and to ensure consistency over time, each institution is reported under its most recent name and sector designation.

² Over time, the number of non-graduates may decrease as these students complete graduation requirements and are counted as part of the graduate population.

Student Transitions to BC Public Post-Secondary Institutions - 2013/14

008 - Kootenay Lake

Grade 12 Graduates Entering Research-Intensive Universities

Demographic Group	Grade 12 Graduates of School Year		Year of Transition to a Research-Intensive University ¹							
	2009/10		2010/11		2011/12		2012/13		2013/14	
	(#)	(%)	(#)	(%)	(#)	(%)	(#)	(%)	(#)	(%)
All Students	400	100	30	8	7	2	2	1	0	0
Female	201	100	14	7	5	2	2	1	0	0
Male	199	100	16	8	2	1	0	0	0	0
Aboriginal	48	100	5	10	0	0	0	0	0	0
ELL	Msk	100	Msk	Msk	Msk	Msk	Msk	Msk	Msk	Msk
Special Needs	23	100	0	0	0	0	0	0	0	0

K-12 Non-Graduates Entering Research-Intensive Universities

Demographic Group	K-12 Non-Graduates of Year of Last Enrolment		Year of Transition to a Research-Intensive University ¹							
	2009/10 ²		2010/11		2011/12		2012/13		2013/14	
	(#)	(%)	(#)	(%)	(#)	(%)	(#)	(%)	(#)	(%)
All Students	231	100	1	0	0	0	0	0	1	0
Female	138	100	1	1	0	0	0	0	1	1
Male	93	100	0	0	0	0	0	0	0	0
Aboriginal	27	100	0	0	0	0	0	0	1	4
ELL	20	100	0	0	0	0	0	0	0	0
Special Needs	13	100	0	0	0	0	0	0	0	0

¹ In recent years, numerous BC post-secondary institutions have changed their name and sector designation. Because of these changes, and to ensure consistency over time, each institution is reported under its most recent name and sector designation.

² Over time, the number of non-graduates may decrease as these students complete graduation requirements and are counted as part of the graduate population.

Student Transitions to BC Public Post-Secondary Institutions - 2013/14

008 - Kootenay Lake

Grade 12 Graduates Entering Teaching-Intensive Universities

Demographic Group	Grade 12 Graduates of School Year		Year of Transition to a Teaching-Intensive University ¹							
	2009/10		2010/11		2011/12		2012/13		2013/14	
	(#)	(%)	(#)	(%)	(#)	(%)	(#)	(%)	(#)	(%)
All Students	400	100	9	2	4	1	3	1	0	0
Female	201	100	3	1	4	2	1	0	0	0
Male	199	100	6	3	0	0	2	1	0	0
Aboriginal	48	100	1	2	0	0	0	0	0	0
ELL	Msk	100	Msk	Msk	Msk	Msk	Msk	Msk	Msk	Msk
Special Needs	23	100	1	4	0	0	0	0	0	0

K-12 Non-Graduates Entering Teaching-Intensive Universities

Demographic Group	K-12 Non-Graduates of Year of Last Enrolment		Year of Transition to a Teaching-Intensive University ¹							
	2009/10 ²		2010/11		2011/12		2012/13		2013/14	
	(#)	(%)	(#)	(%)	(#)	(%)	(#)	(%)	(#)	(%)
All Students	231	100	2	1	2	1	0	0	0	0
Female	138	100	2	1	1	1	0	0	0	0
Male	93	100	0	0	1	1	0	0	0	0
Aboriginal	27	100	0	0	0	0	0	0	0	0
ELL	20	100	0	0	1	5	0	0	0	0
Special Needs	13	100	0	0	0	0	0	0	0	0

¹ In recent years, numerous BC post-secondary institutions have changed their name and sector designation. Because of these changes, and to ensure consistency over time, each institution is reported under its most recent name and sector designation.

² Over time, the number of non-graduates may decrease as these students complete graduation requirements and are counted as part of the graduate population.

Student Transitions to BC Public Post-Secondary Institutions - 2013/14

008 - Kootenay Lake

Grade 12 Graduates Enrolled in Post-Secondary within 3 Years

Grade 12 Graduates by Post-Secondary Program Area¹ (within 3 years of graduating K-12)

Grade 12 Graduation Year	Developmental Level		PSE Level		Total	
	(#)	(%)	(#)	(%)	(#)	(%)
2006/07	55	21	210	79	265	100
2007/08	53	18	246	82	299	100
2008/09	58	21	216	79	274	100
2009/10	36	15	206	85	242	100
2010/11	53	21	205	79	258	100

¹ A student is categorized as enrolled in either a developmental program or a post-secondary education ("PSE") level program, based on the first identified enrolment after graduating from K-12.

K-12 Non-Graduates Enrolled in Post-Secondary within 3 Years

K-12 Non-Graduates by Post-Secondary Program Area² (within 3 years of leaving K-12)

Year of Last Enrolment in the K-12 System	Developmental Level		PSE Level		Total	
	(#)	(%)	(#)	(%)	(#)	(%)
2006/07	24	49	25	51	49	100
2007/08	30	50	30	50	60	100
2008/09	33	50	33	50	66	100
2009/10	26	38	42	62	68	100
2010/11	49	48	54	52	103	100

² A student is categorized as enrolled in either a developmental program or a post-secondary education ("PSE") level program, based on the first identified enrolment after K-12.

Student Transitions to BC Public Post-Secondary Institutions - 2013/14

008 - Kootenay Lake

Grade 12 Graduates Enrolled in Post-Secondary within 3 Years

Grade 12 Graduate Enrolments by Post-Secondary Sector¹

Grade 12 Graduation Year	Community College (%)	Institute (%)	Research- Intensive University (%)	Teaching- Intensive University (%)	Total (%)
2006/07	81.9	1.5	7.9	8.7	100.0
2007/08	84.6	0.7	9.7	5.0	100.0
2008/09	86.9	0.4	9.1	3.6	100.0
2009/10	76.0	1.2	16.1	6.6	100.0
2010/11	83.3	0.8	9.7	6.2	100.0

K-12 Non-Graduates Enrolled in Post-Secondary within 3 Years

K-12 Non-Graduate Enrolments by Post-Secondary Sector¹

Year of Last Enrolment in the K-12 System	Community College (%)	Institute (%)	Research- Intensive University (%)	Teaching- Intensive University (%)	Total (%)
2006/07	98.0	0.0	0.0	2.0	100.0
2007/08	91.7	3.3	3.3	1.7	100.0
2008/09	93.9	1.5	1.5	3.0	100.0
2009/10	89.7	2.9	1.5	5.9	100.0
2010/11	89.3	1.9	1.0	7.8	100.0

¹ In recent years, numerous BC post-secondary institutions have changed their name and sector designation. Because of these changes, and to ensure consistency over time, each institution is reported under its most recent name and sector designation.

Student Transitions to BC Public Post-Secondary Institutions - 2013/14

008 - Kootenay Lake

Grade 12 Graduate Transitions into Post-Secondary within 3 Years¹

Sector	Post-Secondary Institution	Grade 12 Graduation Year 2010/11	
		(#)	(%)
Community College	Camosun College	4	1.6
	College Of New Caledonia	1	0.4
	College Of The Rockies	54	20.9
	Douglas College	2	0.8
	Langara College	2	0.8
	North Island College	0	0.0
	Northern Lights College	2	0.8
	Northwest Community College	0	0.0
	Okanagan College	12	4.7
	Selkirk College	138	53.5
	Vancouver Community College	0	0.0
	Subtotal	215	83.3
Institute	British Columbia Institute Of Technology	2	0.8
	Justice Institute Of British Columbia	0	0.0
	Nicola Valley Institute Of Technology	0	0.0
	Subtotal	2	0.8
Research-Intensive University	Simon Fraser University	4	1.6
	University Of British Columbia	5	1.9
	University Of British Columbia Okanagan	4	1.6
	University Of Northern British Columbia	0	0.0
	University Of Victoria	12	4.7
	Subtotal	25	9.7
Teaching-Intensive University	Capilano University	1	0.4
	Emily Carr University Of Art and Design	2	0.8
	Kwantlen Polytechnic University	3	1.2
	Royal Roads University	0	0.0
	Thompson Rivers University	9	3.5
	University Of The Fraser Valley	0	0.0
	Vancouver Island University	1	0.4
	Subtotal	16	6.2
	Total	258	100.0

¹ In recent years, numerous BC post-secondary institutions have changed their name and sector designation. Because of these changes, and to ensure consistency over time, each institution is reported under its most recent name and sector designation.

Student Transitions to BC Public Post-Secondary Institutions - 2013/14

008 - Kootenay Lake

K-12 Non-Graduate Transitions into Post-Secondary within 3 Years¹

Sector	Post-Secondary Institution	Year of Last Enrolment in K-12 2010/11	
		(#)	(%)
Community College	Camosun College	0	0.0
	College Of New Caledonia	0	0.0
	College Of The Rockies	36	35.0
	Douglas College	0	0.0
	Langara College	0	0.0
	North Island College	0	0.0
	Northern Lights College	0	0.0
	Northwest Community College	0	0.0
	Okanagan College	6	5.8
	Selkirk College	49	47.6
	Vancouver Community College	1	1.0
	Subtotal	92	89.3
Institute	British Columbia Institute Of Technology	0	0.0
	Justice Institute Of British Columbia	2	1.9
	Nicola Valley Institute Of Technology	0	0.0
		Subtotal	2
Research-Intensive University	Simon Fraser University	0	0.0
	University Of British Columbia	1	1.0
	University Of British Columbia Okanagan	0	0.0
	University Of Northern British Columbia	0	0.0
	University Of Victoria	0	0.0
		Subtotal	1
Teaching-Intensive University	Capilano University	0	0.0
	Emily Carr University Of Art and Design	0	0.0
	Kwantlen Polytechnic University	1	1.0
	Royal Roads University	0	0.0
	Thompson Rivers University	6	5.8
	University Of The Fraser Valley	0	0.0
	Vancouver Island University	1	1.0
		Subtotal	8
	Total	103	100.0

¹ In recent years, numerous BC post-secondary institutions have changed their name and sector designation. Because of these changes, and to ensure consistency over time, each institution is reported under its most recent name and sector designation.

Student Transitions to BC Public Post-Secondary Institutions - 2013/14

008 - Kootenay Lake

Post-Secondary Credentials of Grade 12 Graduates

Post-Secondary Credential	PSI School Year 2013/14	
	(#)	(%)
Advanced Certificate	3	1.0
Advanced Diploma	1	0.3
Apprenticeship	12	4.2
Associate Degree	6	2.1
Bachelors Degree	85	29.4
Certificate	112	38.8
Developmental Credential	0	0.0
Diploma	51	17.6
Doctorate	1	0.3
First Professional Degree	4	1.4
Graduate Certificate	0	0.0
Graduate Diploma	1	0.3
Masters Degree	7	2.4
Other	0	0.0
Post-Degree Certificate	0	0.0
Post-Degree Diploma	1	0.3
Short Certificate	5	1.7
Total Post-Secondary Credentials	289	100.0

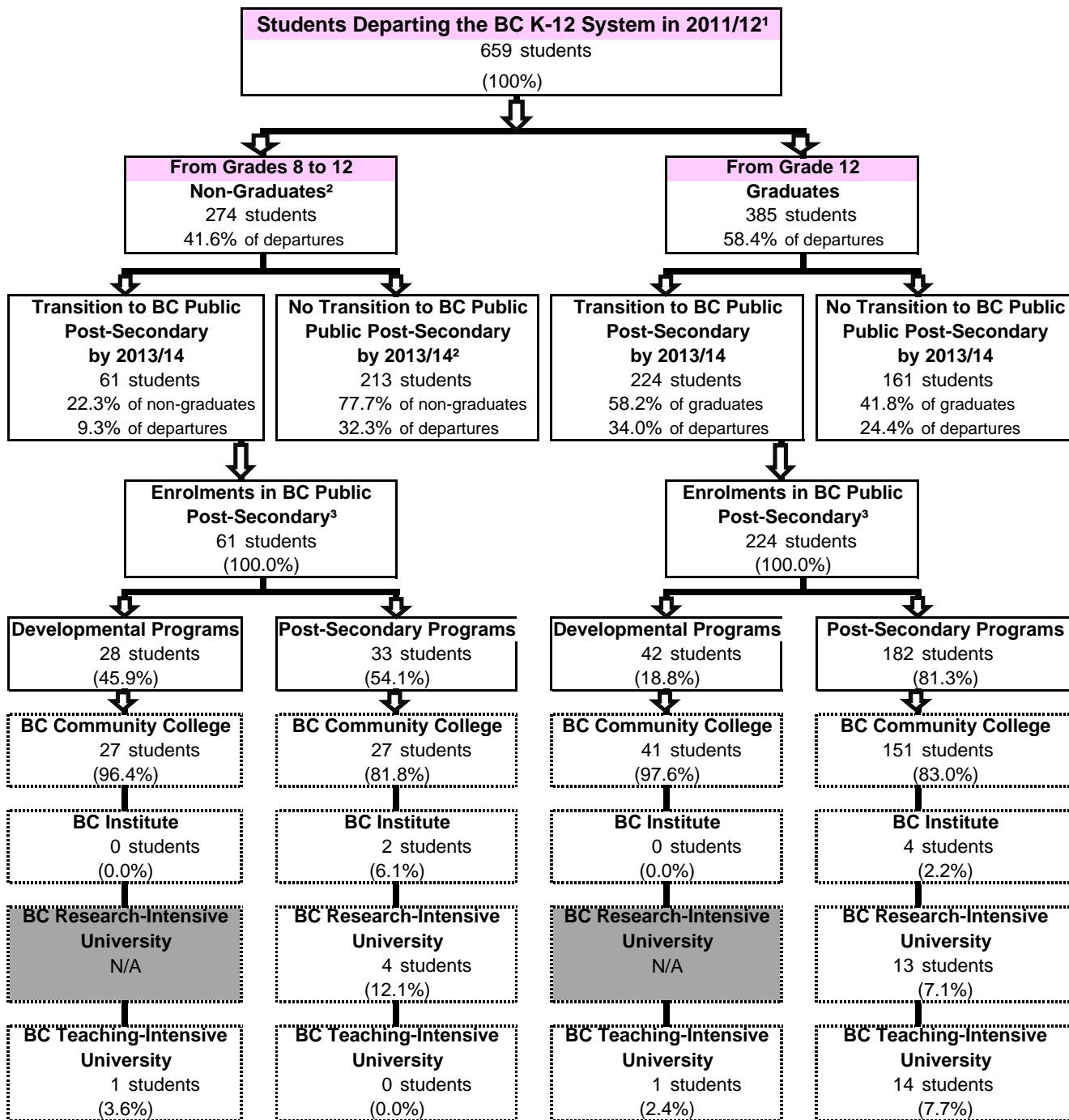
Post-Secondary Credentials of K-12 Non-Graduates

Post-Secondary Credential	PSI School Year 2013/14	
	(#)	(%)
Advanced Certificate	0	0.0
Advanced Diploma	0	0.0
Apprenticeship	2	3.3
Associate Degree	0	0.0
Bachelors Degree	11	18.0
Certificate	31	50.8
Developmental Credential	7	11.5
Diploma	8	13.1
Doctorate	0	0.0
First Professional Degree	0	0.0
Graduate Certificate	0	0.0
Graduate Diploma	0	0.0
Masters Degree	0	0.0
Other	0	0.0
Post-Degree Certificate	0	0.0
Post-Degree Diploma	0	0.0
Short Certificate	2	3.3
Total Post-Secondary Credentials	61	100.0

Student Transitions to BC Public Post-Secondary Institutions - 2013/14

008 - Kootenay Lake

Annual Outflow of Students, K-12



1 This allows for analysis of two complete academic years after students depart from the K-12 system. 'Departures' include grade 12 graduates, and non-graduates who left at some point during their grade 8 to grade 12 school years.

2 Non-graduates are identified by the last year they were seen in the K-12 system. Non-graduates may have been last seen in grades 8 to 12.

The numbers for non-graduates are unadjusted for outmigration - some may have moved to and graduated in other jurisdictions. Over time, the number of non-graduates may decrease as students complete graduation requirements and are counted as graduates.

3 In recent years, numerous BC post-secondary institutions have changed their name and sector designation. Because of these changes, and to ensure consistency over time, each institution is reported under its most recent name and sector designation.