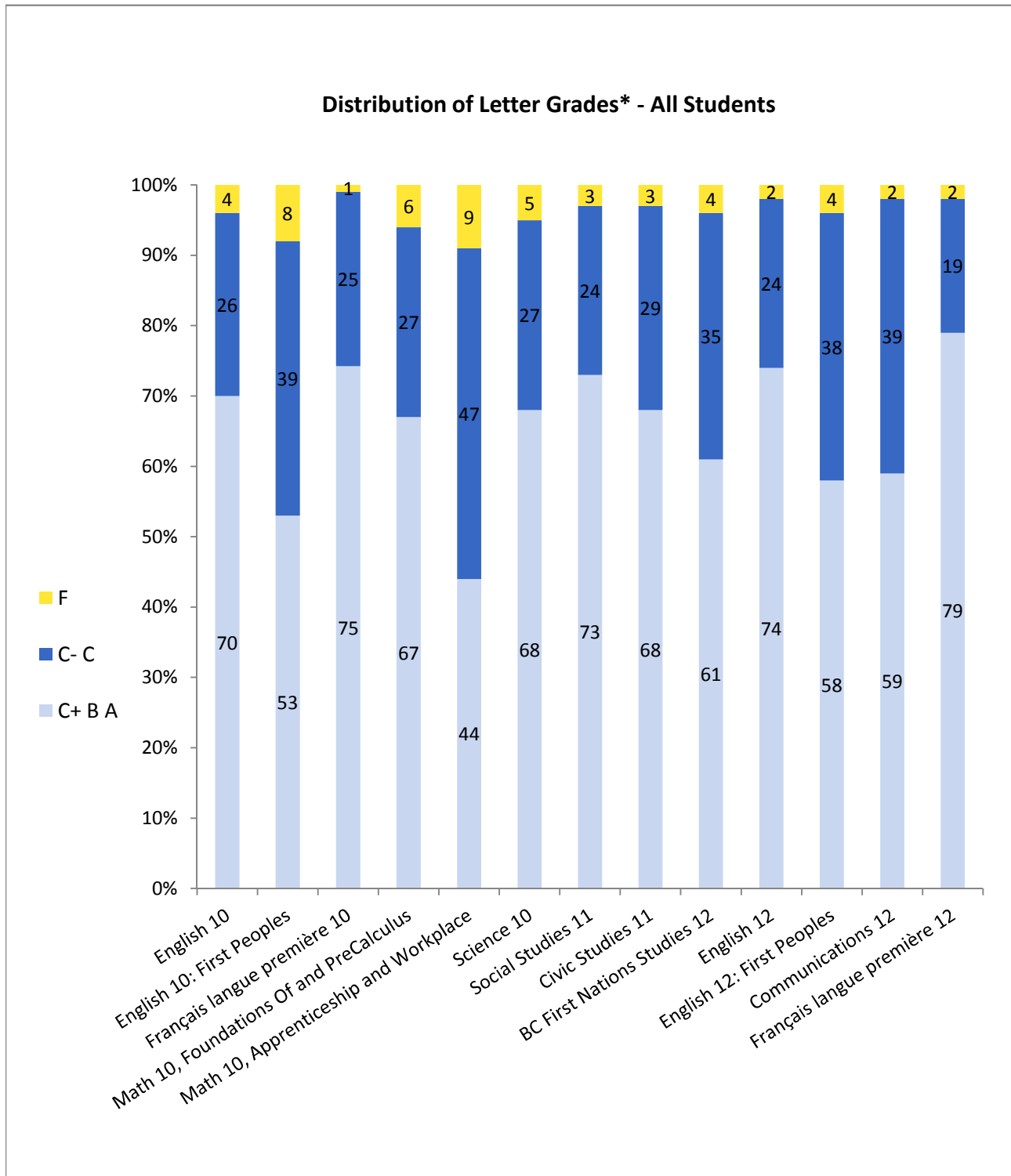


Provincial Required Examinations - 2014/15

Province - Public and Independent Schools Combined

Blended Final Marks - 2014/15 - Summary for Required Examinations



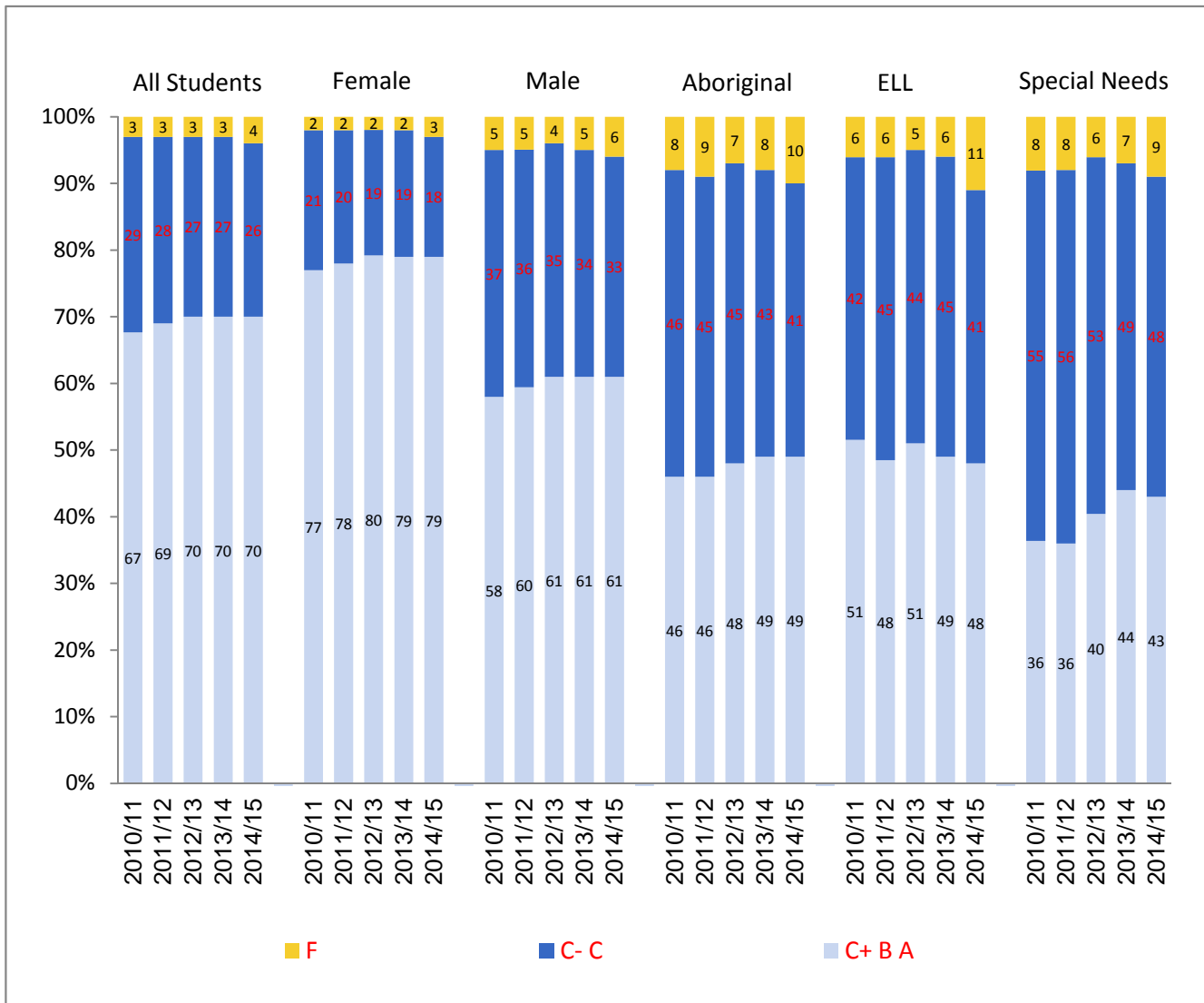
* Due to rounding totals may not equal 100%

Provincial Required Examinations - 2014/15

Province - Public and Independent Schools Combined

ENGLISH 10 - Blended Final Marks

Distribution of Letter Grades by Subpopulation* - 2010/11 - 2014/15



* Due to rounding totals may not equal 100%

Provincial Required Examinations - 2014/15

Province - Public and Independent Schools Combined

ENGLISH 10 - Blended Final Marks

	School Year	Total Gr 10 Students*	Students Assigned Blended Final Mark	C- (pass) or Better		C+ (good) or Better		
				Province		Province		
				#	%	#	%	
Blended Final Marks	All Students	2010/11	60617	52064	50266	97	35001	67
		2011/12	59304	53124	51351	97	36447	69
		2012/13	55756	50812	49433	97	35754	70
		2013/14	53620	48023	46489	97	33741	70
		2014/15	52834	48090	46100	96	33624	70
Female		2010/11	30093	25307	24773	98	19455	77
		2011/12	29661	26063	25538	98	20333	78
		2012/13	27359	24913	24484	98	19827	80
		2013/14	26520	23703	23284	98	18825	79
		2014/15	25992	23704	23067	97	18756	79
Male		2010/11	30524	26757	25493	95	15546	58
		2011/12	29643	27061	25813	95	16114	60
		2012/13	28397	25899	24949	96	15927	61
		2013/14	27100	24320	23205	95	14916	61
		2014/15	26842	24386	23033	94	14868	61
Aboriginal		2010/11	6654	4703	4308	92	2159	46
		2011/12	6581	4649	4251	91	2150	46
		2012/13	6288	4471	4149	93	2137	48
		2013/14	5945	4134	3809	92	2039	49
		2014/15	5741	4170	3754	90	2034	49
ELL		2010/11	2637	2649	2478	94	1355	51
		2011/12	2638	2674	2504	94	1292	48
		2012/13	2370	2479	2350	95	1266	51
		2013/14	2219	2400	2256	94	1175	49
		2014/15	1955	1965	1750	89	935	48
Special Needs		2010/11	4482	3453	3162	92	1248	36
		2011/12	4431	3469	3189	92	1244	36
		2012/13	4451	3540	3321	94	1429	40
		2013/14	4515	3547	3301	93	1561	44
		2014/15	4365	3655	3328	91	1589	43

Distribution of Letter Grades

	School Year	F		C-		C		C+		B		A		
		#	%	#	%	#	%	#	%	#	%	#	%	
		Blended Final Marks	All Students	2014/15	1990	4	5910	12	6566	14	6990	15	17591	37
	Female	2014/15	637	3	1833	8	2478	10	2986	13	9655	41	6115	26
	Male	2014/15	1353	6	4077	17	4088	17	4004	16	7936	33	2928	12
	Aboriginal	2014/15	416	10	978	23	742	18	622	15	1078	26	334	8
	ELL	2014/15	215	11	426	22	389	20	360	18	499	25	76	4
	Special Needs	2014/15	327	9	909	25	830	23	649	18	798	22	142	4

* Data represents only those students present in the school in September and/or February of year indicated

Provincial Required Examinations - 2014/15

Province - Public and Independent Schools Combined

ENGLISH 10 - Exam Marks

Exam Marks	All Students	School Year	Total Gr 10 Students*	Students Assigned Exam Mark	C- (pass) or Better		C+ (good) or Better	
					Province		Province	
					#	%	#	%
		2010/11	60617	52064	46887	90	32398	62
		2011/12	59304	53124	48407	91	34533	65
		2012/13	55756	50812	47293	93	35422	70
		2013/14	53620	48023	43283	90	30766	64
		2014/15	52834	48090	42614	89	27599	57
	Female	2010/11	30093	25307	23629	93	17583	69
		2011/12	29661	26063	24429	94	18596	71
		2012/13	27359	24913	23668	95	18713	75
		2013/14	26520	23703	21988	93	16606	70
		2014/15	25992	23704	21694	92	15174	64
	Male	2010/11	30524	26757	23258	87	14815	55
		2011/12	29643	27061	23978	89	15937	59
		2012/13	28397	25899	23625	91	16709	65
		2013/14	27100	24320	21295	88	14160	58
		2014/15	26842	24386	20920	86	12425	51
	Aboriginal	2010/11	6654	4703	3780	80	2027	43
		2011/12	6581	4649	3856	83	2214	48
		2012/13	6288	4471	3834	86	2385	53
		2013/14	5945	4134	3451	83	1984	48
		2014/15	5741	4170	3300	79	1637	39
	ELL	2010/11	2637	2649	1969	74	783	30
		2011/12	2638	2674	1948	73	704	26
		2012/13	2370	2479	1949	79	860	35
		2013/14	2219	2400	1750	73	718	30
		2014/15	1955	1965	1347	69	449	23
	Special Needs	2010/11	4482	3453	2519	73	1133	33
		2011/12	4431	3469	2662	77	1206	35
		2012/13	4451	3540	2885	81	1485	42
		2013/14	4515	3547	2761	78	1413	40
		2014/15	4365	3655	2808	77	1213	33

Distribution of Letter Grades

Exam Marks	All Students	School Year	F		C-		C		C+		B		A	
			#	%	#	%	#	%	#	%	#	%	#	%
				2014/15	5476	11	4847	10	10168	21	10918	23	10538	22
	Female	2014/15	2010	8	1970	8	4550	19	5428	23	5893	25	3853	16
	Male	2014/15	3466	14	2877	12	5618	23	5490	23	4645	19	2290	9
	Aboriginal	2014/15	870	21	622	15	1041	25	861	21	585	14	191	5
	ELL	2014/15	618	31	401	20	497	25	289	15	127	6	33	2
	Special Needs	2014/15	847	23	610	17	985	27	655	18	416	11	142	4

* Data represents only those students present in the school in September and/or February of year indicated

Provincial Required Examinations - 2014/15

Province - Public and Independent Schools Combined

ENGLISH 10 - Course Marks

Course Marks	All Students	School Year	Total Gr 10 Students*	Students Assigned Course Mark	C- (pass) or Better		C+ (good) or Better	
					Province		Province	
					#	%	#	%
		2010/11	60617	52064	50063	96	35852	69
		2011/12	59304	53124	51178	96	37152	70
		2012/13	55756	50812	49164	97	36082	71
		2013/14	53620	48023	46400	97	34664	72
		2014/15	52834	48090	46332	96	34994	73
	Female	2010/11	30093	25307	24706	98	19768	78
		2011/12	29661	26063	25481	98	20621	79
		2012/13	27359	24913	24403	98	19979	80
		2013/14	26520	23703	23224	98	19223	81
		2014/15	25992	23704	23140	98	19334	82
	Male	2010/11	30524	26757	25357	95	16084	60
		2011/12	29643	27061	25697	95	16531	61
		2012/13	28397	25899	24761	96	16103	62
		2013/14	27100	24320	23176	95	15441	63
		2014/15	26842	24386	23192	95	15660	64
	Aboriginal	2010/11	6654	4703	4285	91	2298	49
		2011/12	6581	4649	4219	91	2229	48
		2012/13	6288	4471	4094	92	2188	49
		2013/14	5945	4134	3794	92	2159	52
		2014/15	5741	4170	3788	91	2213	53
	ELL	2010/11	2637	2649	2505	95	1530	58
		2011/12	2638	2674	2534	95	1479	55
		2012/13	2370	2479	2361	95	1408	57
		2013/14	2219	2400	2264	94	1350	56
		2014/15	1955	1965	1816	92	1089	55
	Special Needs	2010/11	4482	3453	3152	91	1436	42
		2011/12	4431	3469	3175	92	1420	41
		2012/13	4451	3540	3308	93	1538	43
		2013/14	4515	3547	3307	93	1730	49
		2014/15	4365	3655	3362	92	1790	49

Distribution of Letter Grades

Course Marks	All Students	2014/15	F		C-		C		C+		B		A	
			#	%	#	%	#	%	#	%	#	%	#	%
					1758	4	5552	12	5786	12	6176	13	16330	34
	Female	2014/15	564	2	1679	7	2127	9	2544	11	8495	36	8295	35
	Male	2014/15	1194	5	3873	16	3659	15	3632	15	7835	32	4193	17
	Aboriginal	2014/15	382	9	891	21	684	16	598	14	1065	26	550	13
	ELL	2014/15	149	8	373	19	354	18	331	17	584	30	174	9
	Special Needs	2014/15	293	8	810	22	762	21	641	18	886	24	263	7

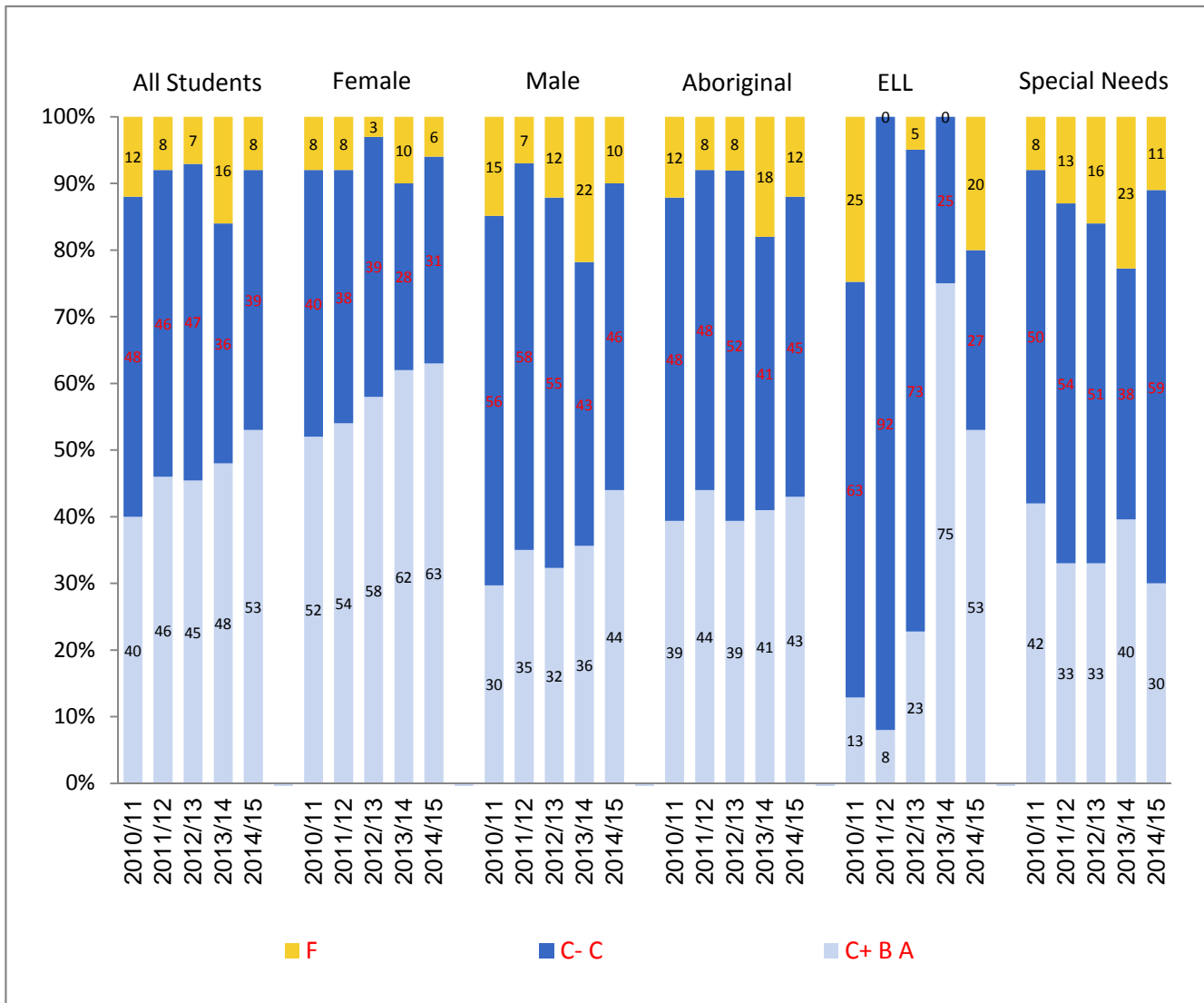
* Data represents only those students present in the school in September and/or February of year indicated

Provincial Required Examinations - 2014/15

Province - Public and Independent Schools Combined

ENGLISH 10: FIRST PEOPLES - Blended Final Marks

Distribution of Letter Grades by Subpopulation* - 2010/11 - 2014/15



* Due to rounding totals may not equal 100%

Provincial Required Examinations - 2014/15

Province - Public and Independent Schools Combined

ENGLISH 10: FIRST PEOPLES - Blended Final Marks

	School Year	Total Gr 10 Students*	Students Assigned Blended Final Mark	C- (pass) or Better		C+ (good) or Better		
				Province		Province		
				#	%	#	%	
Blended Final Marks	All Students	2010/11	60617	102	90	88	41	40
		2011/12	59304	166	153	92	76	46
		2012/13	55756	295	273	93	134	45
		2013/14	53620	345	289	84	165	48
		2014/15	52834	376	345	92	200	53
Female		2010/11	30093	48	44	92	25	52
		2011/12	29661	95	87	92	51	54
		2012/13	27359	150	146	97	87	58
		2013/14	26520	160	144	90	99	62
		2014/15	25992	183	172	94	115	63
Male		2010/11	30524	54	46	85	16	30
		2011/12	29643	71	66	93	25	35
		2012/13	28397	145	127	88	47	32
		2013/14	27100	185	145	78	66	36
		2014/15	26842	193	173	90	85	44
Aboriginal		2010/11	6654	89	78	88	35	39
		2011/12	6581	153	141	92	68	44
		2012/13	6288	228	209	92	90	39
		2013/14	5945	266	218	82	110	41
		2014/15	5741	249	220	88	107	43
ELL		2010/11	2637	8	6	75	1	13
		2011/12	2638	12	12	100	1	8
		2012/13	2370	22	21	95	5	23
		2013/14	2219	4	4	100	3	75
		2014/15	1955	15	12	80	8	53
Special Needs		2010/11	4482	12	11	92	5	42
		2011/12	4431	24	21	88	8	33
		2012/13	4451	43	36	84	14	33
		2013/14	4515	48	37	77	19	40
		2014/15	4365	63	56	89	19	30

Distribution of Letter Grades

	School Year	F		C-		C		C+		B		A		
		#	%	#	%	#	%	#	%	#	%	#	%	
		Blended Final Marks	All Students	2014/15	31	8	67	18	78	21	62	16	111	30
	Female	2014/15	11	6	23	13	34	19	26	14	67	37	22	12
	Male	2014/15	20	10	44	23	44	23	36	19	44	23	5	3
	Aboriginal	2014/15	29	12	56	22	57	23	33	13	61	24	13	5
	ELL	2014/15	3	20	3	20	1	7	4	27	3	20	1	7
	Special Needs	2014/15	7	11	17	27	20	32	7	11	11	17	1	2

* Data represents only those students present in the school in September and/or February of year indicated

Provincial Required Examinations - 2014/15

Province - Public and Independent Schools Combined

ENGLISH 10: FIRST PEOPLES - Exam Marks

Exam Marks	School Year	Total Gr 10 Students*	Students Assigned Exam Mark	C- (pass) or Better		C+ (good) or Better	
				Province		Province	
				#	%	#	%
All Students	2010/11	60617	102	69	68	36	35
	2011/12	59304	166	113	68	54	33
	2012/13	55756	295	237	80	128	43
	2013/14	53620	345	239	69	126	37
	2014/15	52834	376	310	82	191	51
Female	2010/11	30093	48	37	77	20	42
	2011/12	29661	95	69	73	32	34
	2012/13	27359	150	129	86	80	53
	2013/14	26520	160	124	78	71	44
	2014/15	25992	183	159	87	104	57
Male	2010/11	30524	54	32	59	16	30
	2011/12	29643	71	44	62	22	31
	2012/13	28397	145	108	74	48	33
	2013/14	27100	185	115	62	55	30
	2014/15	26842	193	151	78	87	45
Aboriginal	2010/11	6654	89	60	67	31	35
	2011/12	6581	153	102	67	48	31
	2012/13	6288	228	174	76	79	35
	2013/14	5945	266	168	63	76	29
	2014/15	5741	249	191	77	101	41
ELL	2010/11	2637	8	2	25	1	13
	2011/12	2638	12	8	67	2	17
	2012/13	2370	22	15	68	2	9
	2013/14	2219	4	3	75	3	75
	2014/15	1955	15	12	80	5	33
Special Needs	2010/11	4482	12	6	50	4	33
	2011/12	4431	24	15	63	4	17
	2012/13	4451	43	34	79	17	40
	2013/14	4515	48	27	56	10	21
	2014/15	4365	63	47	75	23	37

Distribution of Letter Grades

Exam Marks	School Year	F		C-		C		C+		B		A	
		#	%	#	%	#	%	#	%	#	%	#	%
		All Students	2014/15	66	18	45	12	74	20	84	22	70	19
Female	2014/15	24	13	20	11	35	19	34	19	39	21	31	17
Male	2014/15	42	22	25	13	39	20	50	26	31	16	6	3
Aboriginal	2014/15	58	23	33	13	57	23	51	20	33	13	17	7
ELL	2014/15	3	20	2	13	5	33	3	20	1	7	1	7
Special Needs	2014/15	16	25	10	16	14	22	13	21	8	13	2	3

* Data represents only those students present in the school in September and/or February of year indicated

Provincial Required Examinations - 2014/15

Province - Public and Independent Schools Combined

ENGLISH 10: FIRST PEOPLES - Course Marks

Course Marks	All Students	School Year	Total Gr 10 Students*	Students Assigned Course Mark	C- (pass) or Better		C+ (good) or Better	
					Province		Province	
					#	%	#	%
		2010/11	60617	102	95	93	46	45
		2011/12	59304	166	155	93	91	55
		2012/13	55756	295	277	94	147	50
		2013/14	53620	345	303	88	186	54
		2014/15	52834	376	352	94	212	56
	Female	2010/11	30093	48	44	92	26	54
		2011/12	29661	95	88	93	55	58
		2012/13	27359	150	147	98	96	64
		2013/14	26520	160	151	94	106	66
		2014/15	25992	183	173	95	119	65
	Male	2010/11	30524	54	51	94	20	37
		2011/12	29643	71	67	94	36	51
		2012/13	28397	145	130	90	51	35
		2013/14	27100	185	152	82	80	43
		2014/15	26842	193	179	93	93	48
	Aboriginal	2010/11	6654	89	82	92	39	44
		2011/12	6581	153	143	93	82	54
		2012/13	6288	228	212	93	104	46
		2013/14	5945	266	231	87	130	49
		2014/15	5741	249	227	91	115	46
	ELL	2010/11	2637	8	6	75	2	25
		2011/12	2638	12	12	100	2	17
		2012/13	2370	22	21	95	6	27
		2013/14	2219	4	4	100	3	75
		2014/15	1955	15	12	80	6	40
	Special Needs	2010/11	4482	12	12	100	8	67
		2011/12	4431	24	22	92	11	46
		2012/13	4451	43	38	88	16	37
		2013/14	4515	48	40	83	22	46
		2014/15	4365	63	59	94	27	43

Distribution of Letter Grades

Course Marks	All Students	2014/15	F		C-		C		C+		B		A	
			#	%	#	%	#	%	#	%	#	%	#	%
					2014/15	24	6	70	19	70	19	64	17	109
	Female	2014/15	10	5	23	13	31	17	24	13	61	33	34	19
	Male	2014/15	14	7	47	24	39	20	40	21	48	25	5	3
	Aboriginal	2014/15	22	9	59	24	53	21	34	14	61	24	20	8
	ELL	2014/15	3	20	1	7	5	33	2	13	3	20	1	7
	Special Needs	2014/15	4	6	19	30	13	21	14	22	11	17	2	3

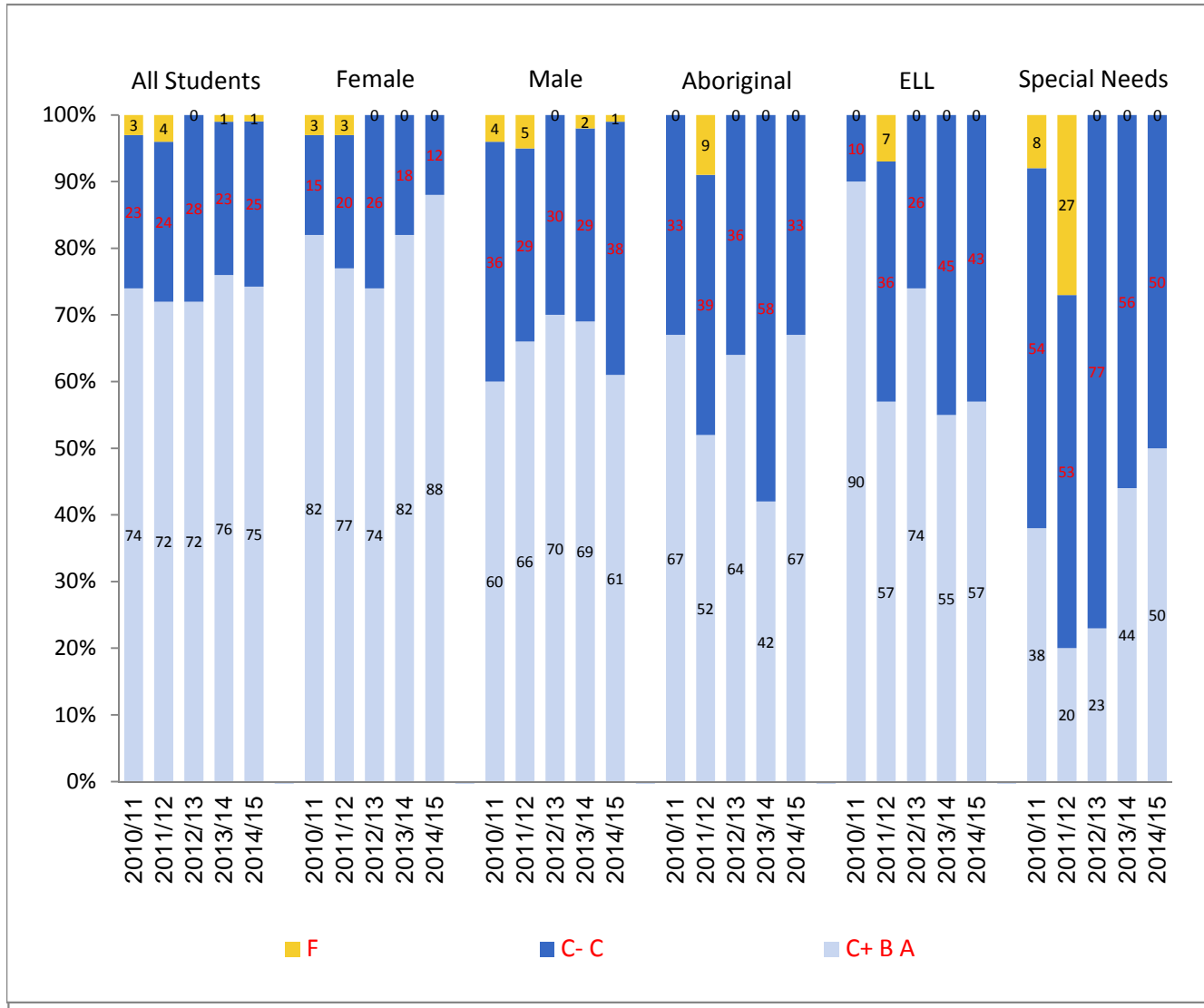
* Data represents only those students present in the school in September and/or February of year indicated

Provincial Required Examinations - 2014/15

Province - Public and Independent Schools Combined

FRANÇAIS LANGUE PREMIÈRE 10 - Blended Final Marks

Distribution of Letter Grades by Subpopulation* - 2010/11 - 2014/15



* Due to rounding totals may not equal 100%

Provincial Required Examinations - 2014/15

Province - Public and Independent Schools Combined

FRANÇAIS LANGUE PREMIÈRE 10 - Blended Final Marks

	School Year	Total Gr 10 Students*	Students Assigned Blended Final Mark	C- (pass) or Better		C+ (good) or Better		
				Province		Province		
				#	%	#	%	
Blended Final Marks	All Students	2010/11	60617	183	177	97	135	74
		2011/12	59304	197	189	96	142	72
		2012/13	55756	179	179	100	129	72
		2013/14	53620	213	211	99	162	76
		2014/15	52834	186	185	99	139	75
Female		2010/11	30093	113	110	97	93	82
		2011/12	29661	106	103	97	82	77
		2012/13	27359	97	97	100	72	74
		2013/14	26520	112	112	100	92	82
		2014/15	25992	94	94	100	83	88
Male		2010/11	30524	70	67	96	42	60
		2011/12	29643	91	86	95	60	66
		2012/13	28397	82	82	100	57	70
		2013/14	27100	101	99	98	70	69
		2014/15	26842	92	91	99	56	61
Aboriginal		2010/11	6654	30	30	100	20	67
		2011/12	6581	23	21	91	12	52
		2012/13	6288	22	22	100	14	64
		2013/14	5945	12	12	100	5	42
		2014/15	5741	21	21	100	14	67
ELL		2010/11	2637	10	10	100	9	90
		2011/12	2638	14	13	93	8	57
		2012/13	2370	23	23	100	17	74
		2013/14	2219	20	20	100	11	55
		2014/15	1955	23	23	100	13	57
Special Needs		2010/11	4482	13	12	92	5	38
		2011/12	4431	15	11	73	3	20
		2012/13	4451	13	13	100	3	23
		2013/14	4515	25	25	100	11	44
		2014/15	4365	18	18	100	9	50

Distribution of Letter Grades

	School Year	F		C-		C		C+		B		A		
		#	%	#	%	#	%	#	%	#	%	#	%	
		Blended Final Marks	All Students	2014/15	1	1	11	6	35	19	22	12	86	46
	Female	2014/15	0	0	1	1	10	11	9	10	50	53	24	26
	Male	2014/15	1	1	10	11	25	27	13	14	36	39	7	8
	Aboriginal	2014/15	0	0	3	14	4	19	5	24	8	38	1	5
	ELL	2014/15	0	0	1	4	9	39	1	4	11	48	1	4
	Special Needs	2014/15	0	0	4	22	5	28	2	11	7	39	0	0

* Data represents only those students present in the school in September and/or February of year indicated

Provincial Required Examinations - 2014/15

Province - Public and Independent Schools Combined

FRANÇAIS LANGUE PREMIÈRE 10 - Exam Marks

Exam Marks	School Year	Total Gr 10 Students*	Students Assigned Exam Mark	C- (pass) or Better		C+ (good) or Better	
				Province		Province	
				#	%	#	%
All Students	2010/11	60617	183	171	93	110	60
	2011/12	59304	197	183	93	140	71
	2012/13	55756	179	170	95	113	63
	2013/14	53620	213	194	91	103	48
	2014/15	52834	186	177	95	88	47
Female	2010/11	30093	113	106	94	70	62
	2011/12	29661	106	97	92	76	72
	2012/13	27359	97	93	96	63	65
	2013/14	26520	112	104	93	60	54
	2014/15	25992	94	92	98	57	61
Male	2010/11	30524	70	65	93	40	57
	2011/12	29643	91	86	95	64	70
	2012/13	28397	82	77	94	50	61
	2013/14	27100	101	90	89	43	43
	2014/15	26842	92	85	92	31	34
Aboriginal	2010/11	6654	30	28	93	16	53
	2011/12	6581	23	20	87	12	52
	2012/13	6288	22	18	82	11	50
	2013/14	5945	12	11	92	2	17
	2014/15	5741	21	19	90	5	24
ELL	2010/11	2637	10	8	80	7	70
	2011/12	2638	14	11	79	6	43
	2012/13	2370	23	22	96	14	61
	2013/14	2219	20	19	95	9	45
	2014/15	1955	23	21	91	9	39
Special Needs	2010/11	4482	13	10	77	2	15
	2011/12	4431	15	9	60	4	27
	2012/13	4451	13	10	77	2	15
	2013/14	4515	25	19	76	2	8
	2014/15	4365	18	16	89	3	17

Distribution of Letter Grades

Exam Marks	School Year	F		C-		C		C+		B		A	
		#	%	#	%	#	%	#	%	#	%	#	%
		All Students	2014/15	9	5	49	26	40	22	37	20	40	22
Female	2014/15	2	2	18	19	17	18	22	23	27	29	8	9
Male	2014/15	7	8	31	34	23	25	15	16	13	14	3	3
Aboriginal	2014/15	2	10	7	33	7	33	2	10	3	14	0	0
ELL	2014/15	2	9	7	30	5	22	5	22	2	9	2	9
Special Needs	2014/15	2	11	10	56	3	17	1	6	2	11	0	0

* Data represents only those students present in the school in September and/or February of year indicated

Provincial Required Examinations - 2014/15

Province - Public and Independent Schools Combined

FRANÇAIS LANGUE PREMIÈRE 10 - Course Marks

Course Marks	All Students	School Year	Total Gr 10 Students*	Students Assigned Course Mark	C- (pass) or Better		C+ (good) or Better	
					Province		Province	
					#	%	#	%
		2010/11	60617	183	178	97	136	74
		2011/12	59304	197	189	96	143	73
		2012/13	55756	179	179	100	134	75
		2013/14	53620	213	210	99	175	82
		2014/15	52834	186	185	99	147	79
	Female	2010/11	30093	113	111	98	93	82
		2011/12	29661	106	103	97	81	76
		2012/13	27359	97	97	100	73	75
		2013/14	26520	112	112	100	96	86
		2014/15	25992	94	94	100	86	91
	Male	2010/11	30524	70	67	96	43	61
		2011/12	29643	91	86	95	62	68
		2012/13	28397	82	82	100	61	74
		2013/14	27100	101	98	97	79	78
		2014/15	26842	92	91	99	61	66
	Aboriginal	2010/11	6654	30	30	100	21	70
		2011/12	6581	23	21	91	12	52
		2012/13	6288	22	22	100	16	73
		2013/14	5945	12	12	100	7	58
		2014/15	5741	21	21	100	14	67
	ELL	2010/11	2637	10	10	100	9	90
		2011/12	2638	14	13	93	9	64
		2012/13	2370	23	23	100	17	74
		2013/14	2219	20	20	100	11	55
		2014/15	1955	23	23	100	15	65
	Special Needs	2010/11	4482	13	12	92	6	46
		2011/12	4431	15	11	73	4	27
		2012/13	4451	13	13	100	5	38
		2013/14	4515	25	25	100	16	64
		2014/15	4365	18	18	100	10	56

Distribution of Letter Grades

Course Marks	All Students	School Year	F		C-		C		C+		B		A	
			#	%	#	%	#	%	#	%	#	%	#	%
				2014/15	1	1	9	5	29	16	23	12	68	37
	Female	2014/15	0	0	1	1	7	7	11	12	34	36	41	44
	Male	2014/15	1	1	8	9	22	24	12	13	34	37	15	16
	Aboriginal	2014/15	0	0	3	14	4	19	4	19	8	38	2	10
	ELL	2014/15	0	0	0	0	8	35	3	13	9	39	3	13
	Special Needs	2014/15	0	0	3	17	5	28	3	17	7	39	0	0

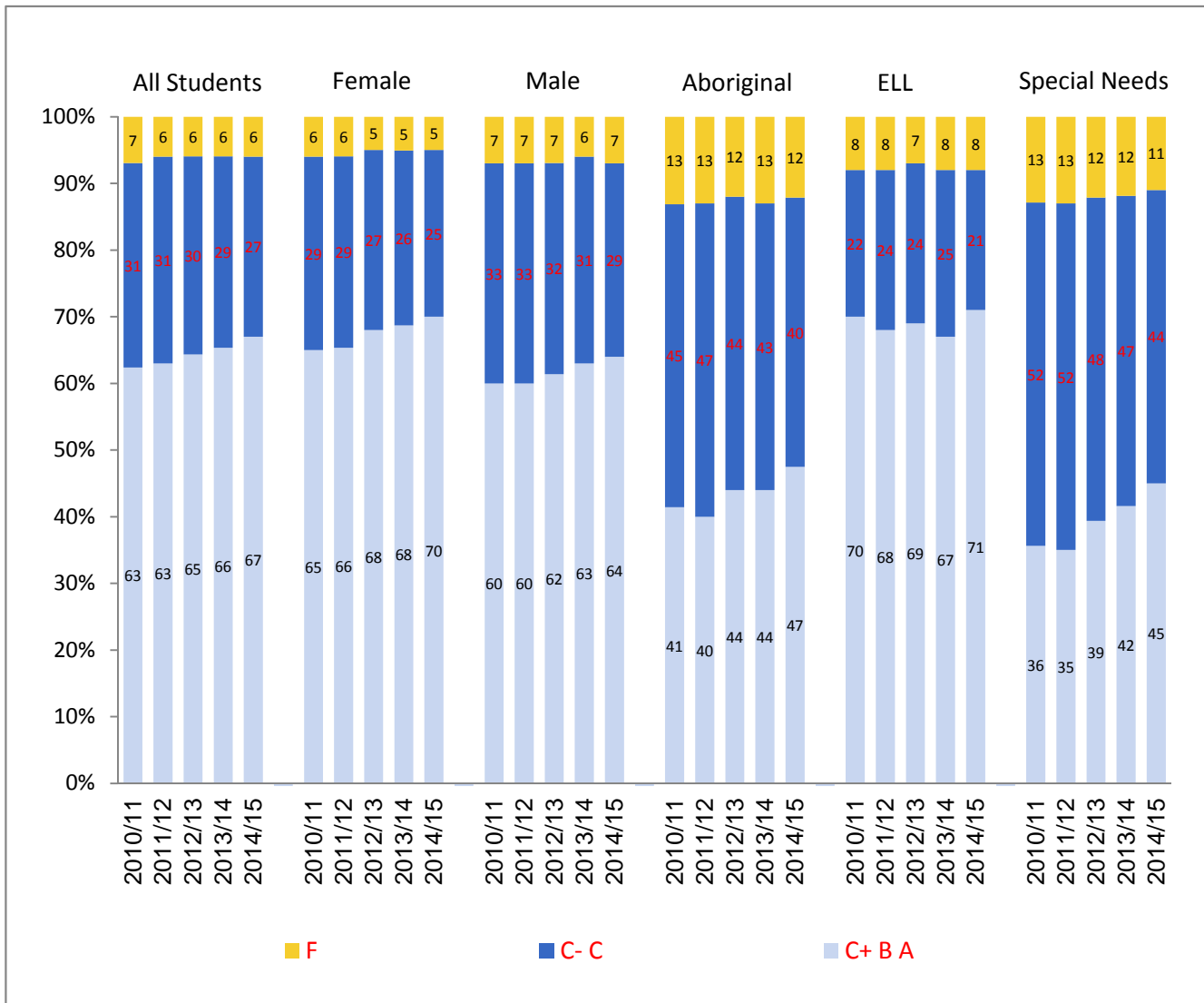
* Data represents only those students present in the school in September and/or February of year indicated

Provincial Required Examinations - 2014/15

Province - Public and Independent Schools Combined

MATHEMATICS 10, FOUNDATIONS OF AND PRECALCULUS - Blended Final Marks

Distribution of Letter Grades by Subpopulation* - 2010/11- 2014/15



* Due to rounding totals may not equal 100%

Provincial Required Examinations - 2014/15

Province - Public and Independent Schools Combined

MATHEMATICS 10, FOUNDATIONS OF AND PRECALCULUS - Blended Final Marks

	School Year	Total Gr 10 Students*	Students Assigned Blended Final Mark	C- (pass) or Better		C+ (good) or Better		
				Province		Province		
				#	%	#	%	
Blended Final Marks	All Students	2010/11	60617	38771	36248	93	24302	63
		2011/12	59304	42264	39656	94	26645	63
		2012/13	55756	40895	38568	94	26503	65
		2013/14	53620	39943	37667	94	26222	66
		2014/15	52834	38126	35794	94	25583	67
Female		2010/11	30093	19542	18417	94	12759	65
		2011/12	29661	21415	20197	94	14056	66
		2012/13	27359	20630	19625	95	13966	68
		2013/14	26520	20373	19290	95	13918	68
		2014/15	25992	19428	18366	95	13560	70
Male		2010/11	30524	19229	17831	93	11543	60
		2011/12	29643	20849	19459	93	12589	60
		2012/13	28397	20265	18943	93	12537	62
		2013/14	27100	19570	18377	94	12304	63
		2014/15	26842	18698	17428	93	12023	64
Aboriginal		2010/11	6654	2323	2014	87	961	41
		2011/12	6581	2549	2206	87	1018	40
		2012/13	6288	2462	2160	88	1082	44
		2013/14	5945	2362	2050	87	1035	44
		2014/15	5741	2189	1922	88	1037	47
ELL		2010/11	2637	1903	1751	92	1336	70
		2011/12	2638	2301	2118	92	1570	68
		2012/13	2370	2072	1925	93	1435	69
		2013/14	2219	1933	1781	92	1296	67
		2014/15	1955	1560	1436	92	1112	71
Special Needs		2010/11	4482	1076	941	87	383	36
		2011/12	4431	1310	1146	87	462	35
		2012/13	4451	1348	1180	88	531	39
		2013/14	4515	1545	1363	88	642	42
		2014/15	4365	1498	1338	89	672	45

Distribution of Letter Grades

	School Year	F		C-		C		C+		B		A		
		#	%	#	%	#	%	#	%	#	%	#	%	
		Blended Final Marks	All Students	2014/15	2332	6	5432	14	4779	13	4417	12	10695	28
	Female	2014/15	1062	5	2524	13	2282	12	2216	11	5565	29	5779	30
	Male	2014/15	1270	7	2908	16	2497	13	2201	12	5130	27	4692	25
	Aboriginal	2014/15	267	12	534	24	351	16	307	14	506	23	224	10
	ELL	2014/15	124	8	180	12	144	9	159	10	422	27	531	34
	Special Needs	2014/15	160	11	383	26	283	19	239	16	318	21	115	8

* Data represents only those students present in the school in September and/or February of year indicated

Provincial Required Examinations - 2014/15

Province - Public and Independent Schools Combined

MATHEMATICS 10, FOUNDATIONS OF AND PRECALCULUS - Exam Marks

Exam Marks	School Year	Total Gr 10 Students*	Students Assigned Exam Mark	C- (pass) or Better		C+ (good) or Better	
				Province		Province	
				#	%	#	%
All Students	2010/11	60617	38771	33053	85	22582	58
	2011/12	59304	42264	35576	84	24731	59
	2012/13	55756	40895	34096	83	23765	58
	2013/14	53620	39943	34269	86	24700	62
	2014/15	52834	38126	32374	85	22612	59
Female	2010/11	30093	19542	16549	85	11341	58
	2011/12	29661	21415	17888	84	12527	58
	2012/13	27359	20630	17201	83	12083	59
	2013/14	26520	20373	17353	85	12600	62
	2014/15	25992	19428	16402	84	11602	60
Male	2010/11	30524	19229	16504	86	11241	58
	2011/12	29643	20849	17688	85	12204	59
	2012/13	28397	20265	16895	83	11682	58
	2013/14	27100	19570	16916	86	12100	62
	2014/15	26842	18698	15972	85	11010	59
Aboriginal	2010/11	6654	2323	1631	70	796	34
	2011/12	6581	2549	1756	69	836	33
	2012/13	6288	2462	1630	66	785	32
	2013/14	5945	2362	1620	69	801	34
	2014/15	5741	2189	1536	70	761	35
ELL	2010/11	2637	1903	1685	89	1326	70
	2011/12	2638	2301	2000	87	1588	69
	2012/13	2370	2072	1802	87	1427	69
	2013/14	2219	1933	1683	87	1341	69
	2014/15	1955	1560	1359	87	1073	69
Special Needs	2010/11	4482	1076	752	70	343	32
	2011/12	4431	1310	910	69	444	34
	2012/13	4451	1348	917	68	477	35
	2013/14	4515	1545	1128	73	614	40
	2014/15	4365	1498	1081	72	525	35

Distribution of Letter Grades

Exam Marks	School Year	F		C-		C		C+		B		A	
		#	%	#	%	#	%	#	%	#	%	#	%
		All Students	2014/15	5752	15	5761	15	4001	10	4177	11	9265	24
Female	2014/15	3026	16	2798	14	2002	10	2077	11	4735	24	4790	25
Male	2014/15	2726	15	2963	16	1999	11	2100	11	4530	24	4380	23
Aboriginal	2014/15	653	30	501	23	274	13	260	12	364	17	137	6
ELL	2014/15	201	13	163	10	123	8	124	8	362	23	587	38
Special Needs	2014/15	417	28	355	24	201	13	165	11	258	17	102	7

* Data represents only those students present in the school in September and/or February of year indicated

Provincial Required Examinations - 2014/15

Province - Public and Independent Schools Combined

MATHEMATICS 10, FOUNDATIONS OF AND PRECALCULUS - Course Marks

Course Marks	All Students	School Year	Total Gr 10 Students*	Students Assigned Course Mark	C- (pass) or Better		C+ (good) or Better	
					Province		Province	
					#	%	#	%
		2010/11	60617	38771	36280	94	25180	65
		2011/12	59304	42264	39687	94	27484	65
		2012/13	55756	40895	38715	95	27632	68
		2013/14	53620	39943	37775	95	27003	68
		2014/15	52834	38126	36087	95	26646	70
	Female	2010/11	30093	19542	18499	95	13304	68
		2011/12	29661	21415	20263	95	14582	68
		2012/13	27359	20630	19727	96	14643	71
		2013/14	26520	20373	19383	95	14411	71
		2014/15	25992	19428	18530	95	14156	73
	Male	2010/11	30524	19229	17781	92	11876	62
		2011/12	29643	20849	19424	93	12902	62
		2012/13	28397	20265	18988	94	12989	64
		2013/14	27100	19570	18392	94	12592	64
		2014/15	26842	18698	17557	94	12490	67
	Aboriginal	2010/11	6654	2323	2033	88	1079	46
		2011/12	6581	2549	2225	87	1122	44
		2012/13	6288	2462	2199	89	1214	49
		2013/14	5945	2362	2076	88	1132	48
		2014/15	5741	2189	1957	89	1142	52
	ELL	2010/11	2637	1903	1753	92	1338	70
		2011/12	2638	2301	2111	92	1584	69
		2012/13	2370	2072	1919	93	1443	70
		2013/14	2219	1933	1787	92	1310	68
		2014/15	1955	1560	1448	93	1118	72
	Special Needs	2010/11	4482	1076	950	88	432	40
		2011/12	4431	1310	1144	87	494	38
		2012/13	4451	1348	1197	89	588	44
		2013/14	4515	1545	1382	89	704	46
		2014/15	4365	1498	1355	90	751	50

Distribution of Letter Grades

Course Marks	All Students	2014/15	F		C-		C		C+		B		A	
			#	%	#	%	#	%	#	%	#	%	#	%
					2039	5	4948	13	4493	12	4066	11	10522	28
	Female	2014/15	898	5	2197	11	2177	11	1956	10	5472	28	6728	35
	Male	2014/15	1141	6	2751	15	2316	12	2110	11	5050	27	5330	29
	Aboriginal	2014/15	232	11	457	21	358	16	260	12	557	25	325	15
	ELL	2014/15	112	7	197	13	133	9	133	9	420	27	565	36
	Special Needs	2014/15	143	10	345	23	259	17	225	15	363	24	163	11

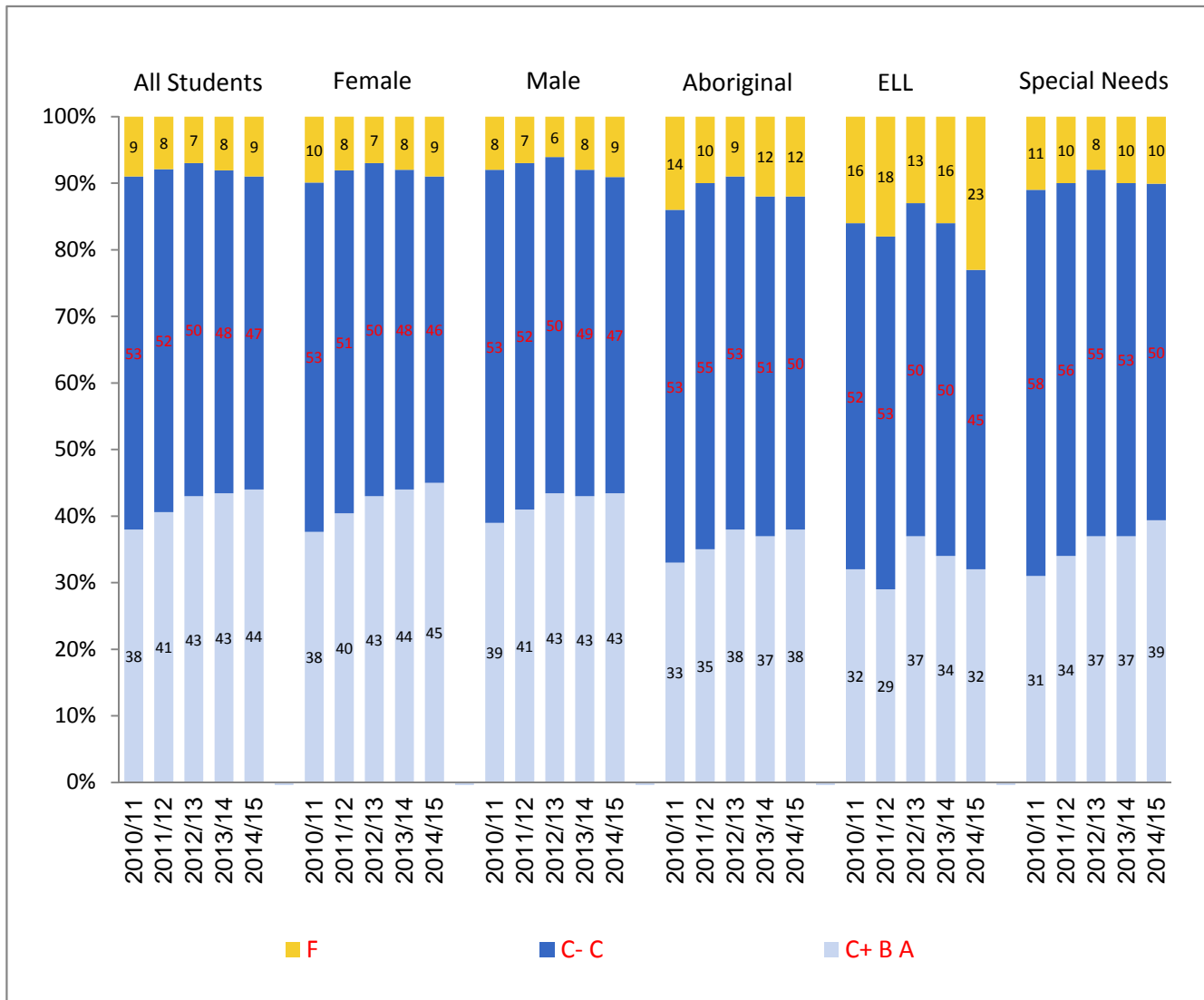
* Data represents only those students present in the school in September and/or February of year indicated

Provincial Required Examinations - 2014/15

Province - Public and Independent Schools Combined

MATHEMATICS 10, APPRENTICESHIP AND WORKPLACE - Blended Final Marks

Distribution of Letter Grades by Subpopulation* - 2010/11 - 2014/15



* Due to rounding totals may not equal 100%

Provincial Required Examinations - 2014/15

Province - Public and Independent Schools Combined

MATHEMATICS 10, APPRENTICESHIP AND WORKPLACE - Blended Final Marks

	School Year	Total Gr 10 Students*	Students Assigned Blended Final Mark	C- (pass) or Better		C+ (good) or Better		
				Province		Province		
				#	%	#	%	
Blended Final Marks	All Students	2010/11	60617	9916	9042	91	3814	38
		2011/12	59304	10917	10090	92	4450	41
		2012/13	55756	10986	10252	93	4725	43
		2013/14	53620	10417	9543	92	4511	43
		2014/15	52834	10475	9523	91	4617	44
Female		2010/11	30093	4039	3651	90	1529	38
		2011/12	29661	4530	4165	92	1834	40
		2012/13	27359	4617	4288	93	1963	43
		2013/14	26520	4256	3905	92	1872	44
		2014/15	25992	4325	3936	91	1945	45
Male		2010/11	30524	5877	5391	92	2285	39
		2011/12	29643	6387	5925	93	2616	41
		2012/13	28397	6369	5964	94	2762	43
		2013/14	27100	6161	5638	92	2639	43
		2014/15	26842	6150	5587	91	2672	43
Aboriginal		2010/11	6654	1932	1671	86	643	33
		2011/12	6581	2336	2094	90	819	35
		2012/13	6288	2428	2202	91	919	38
		2013/14	5945	2323	2040	88	863	37
		2014/15	5741	2336	2058	88	887	38
ELL		2010/11	2637	337	283	84	109	32
		2011/12	2638	395	325	82	114	29
		2012/13	2370	409	356	87	151	37
		2013/14	2219	454	381	84	156	34
		2014/15	1955	429	332	77	139	32
Special Needs		2010/11	4482	1884	1684	89	588	31
		2011/12	4431	2229	2010	90	766	34
		2012/13	4451	2283	2094	92	835	37
		2013/14	4515	2324	2093	90	853	37
		2014/15	4365	2361	2116	90	926	39

Distribution of Letter Grades

	School Year	F		C-		C		C+		B		A		
		#	%	#	%	#	%	#	%	#	%	#	%	
		Blended Final Marks	All Students	2014/15	952	9	2603	25	2303	22	1811	17	2359	23
	Female	2014/15	389	9	1035	24	956	22	778	18	974	23	193	4
	Male	2014/15	563	9	1568	25	1347	22	1033	17	1385	23	254	4
	Aboriginal	2014/15	278	12	645	28	526	23	380	16	447	19	60	3
	ELL	2014/15	97	23	111	26	82	19	50	12	76	18	13	3
	Special Needs	2014/15	245	10	621	26	569	24	405	17	461	20	60	3

* Data represents only those students present in the school in September and/or February of year indicated

Provincial Required Examinations - 2014/15

Province - Public and Independent Schools Combined

MATHEMATICS 10, APPRENTICESHIP AND WORKPLACE - Exam Marks

Exam Marks	School Year	Total Gr 10 Students*	Students Assigned Exam Mark	C- (pass) or Better		C+ (good) or Better	
				Province		Province	
				#	%	#	%
All Students	2010/11	60617	9916	7253	73	1583	16
	2011/12	59304	10917	7889	72	1834	17
	2012/13	55756	10986	7813	71	1928	18
	2013/14	53620	10417	7035	68	1597	15
	2014/15	52834	10475	7321	70	1714	16
Female	2010/11	30093	4039	2724	67	464	11
	2011/12	29661	4530	3031	67	578	13
	2012/13	27359	4617	3036	66	569	12
	2013/14	26520	4256	2661	63	494	12
	2014/15	25992	4325	2777	64	560	13
Male	2010/11	30524	5877	4529	77	1119	19
	2011/12	29643	6387	4858	76	1256	20
	2012/13	28397	6369	4777	75	1359	21
	2013/14	27100	6161	4374	71	1103	18
	2014/15	26842	6150	4544	74	1154	19
Aboriginal	2010/11	6654	1932	1343	70	233	12
	2011/12	6581	2336	1572	67	316	14
	2012/13	6288	2428	1617	67	350	14
	2013/14	5945	2323	1465	63	306	13
	2014/15	5741	2336	1473	63	284	12
ELL	2010/11	2637	337	175	52	32	9
	2011/12	2638	395	197	50	35	9
	2012/13	2370	409	198	48	31	8
	2013/14	2219	454	208	46	32	7
	2014/15	1955	429	215	50	33	8
Special Needs	2010/11	4482	1884	1223	65	217	12
	2011/12	4431	2229	1421	64	278	12
	2012/13	4451	2283	1445	63	316	14
	2013/14	4515	2324	1458	63	311	13
	2014/15	4365	2361	1541	65	318	13

Distribution of Letter Grades

Exam Marks	School Year	F		C-		C		C+		B		A	
		#	%	#	%	#	%	#	%	#	%	#	%
		All Students	2014/15	3154	30	3446	33	2161	21	987	9	595	6
Female	2014/15	1548	36	1452	34	765	18	325	8	194	4	41	1
Male	2014/15	1606	26	1994	32	1396	23	662	11	401	7	91	1
Aboriginal	2014/15	863	37	762	33	427	18	177	8	90	4	17	1
ELL	2014/15	214	50	131	31	51	12	19	4	11	3	3	1
Special Needs	2014/15	820	35	784	33	439	19	170	7	126	5	22	1

* Data represents only those students present in the school in September and/or February of year indicated

Provincial Required Examinations - 2014/15

Province - Public and Independent Schools Combined

MATHEMATICS 10, APPRENTICESHIP AND WORKPLACE - Course Marks

Course Marks	All Students	School Year	Total Gr 10 Students*	Students Assigned Course Mark	C- (pass) or Better		C+ (good) or Better	
					Province		Province	
					#	%	#	%
		2010/11	60617	9916	9050	91	4573	46
		2011/12	59304	10917	10128	93	5272	48
		2012/13	55756	10986	10319	94	5594	51
		2013/14	53620	10417	9665	93	5397	52
		2014/15	52834	10475	9680	92	5458	52
	Female	2010/11	30093	4039	3678	91	1892	47
		2011/12	29661	4530	4203	93	2254	50
		2012/13	27359	4617	4338	94	2398	52
		2013/14	26520	4256	3974	93	2291	54
		2014/15	25992	4325	4019	93	2344	54
	Male	2010/11	30524	5877	5372	91	2681	46
		2011/12	29643	6387	5925	93	3018	47
		2012/13	28397	6369	5981	94	3196	50
		2013/14	27100	6161	5691	92	3106	50
		2014/15	26842	6150	5661	92	3114	51
	Aboriginal	2010/11	6654	1932	1685	87	790	41
		2011/12	6581	2336	2105	90	986	42
		2012/13	6288	2428	2224	92	1086	45
		2013/14	5945	2323	2079	89	1064	46
		2014/15	5741	2336	2107	90	1083	46
	ELL	2010/11	2637	337	291	86	149	44
		2011/12	2638	395	333	84	150	38
		2012/13	2370	409	368	90	199	49
		2013/14	2219	454	407	90	211	46
		2014/15	1955	429	352	82	182	42
	Special Needs	2010/11	4482	1884	1685	89	783	42
		2011/12	4431	2229	2033	91	961	43
		2012/13	4451	2283	2114	93	1035	45
		2013/14	4515	2324	2123	91	1077	46
		2014/15	4365	2361	2164	92	1117	47

Distribution of Letter Grades

Course Marks	All Students	2014/15	F		C-		C		C+		B		A	
			#	%	#	%	#	%	#	%	#	%	#	%
					795	8	2159	21	2063	20	1625	16	2772	26
	Female	2014/15	306	7	827	19	848	20	679	16	1203	28	462	11
	Male	2014/15	489	8	1332	22	1215	20	946	15	1569	26	599	10
	Aboriginal	2014/15	229	10	539	23	485	21	349	15	563	24	171	7
	ELL	2014/15	77	18	99	23	71	17	56	13	85	20	41	10
	Special Needs	2014/15	197	8	513	22	534	23	353	15	574	24	190	8

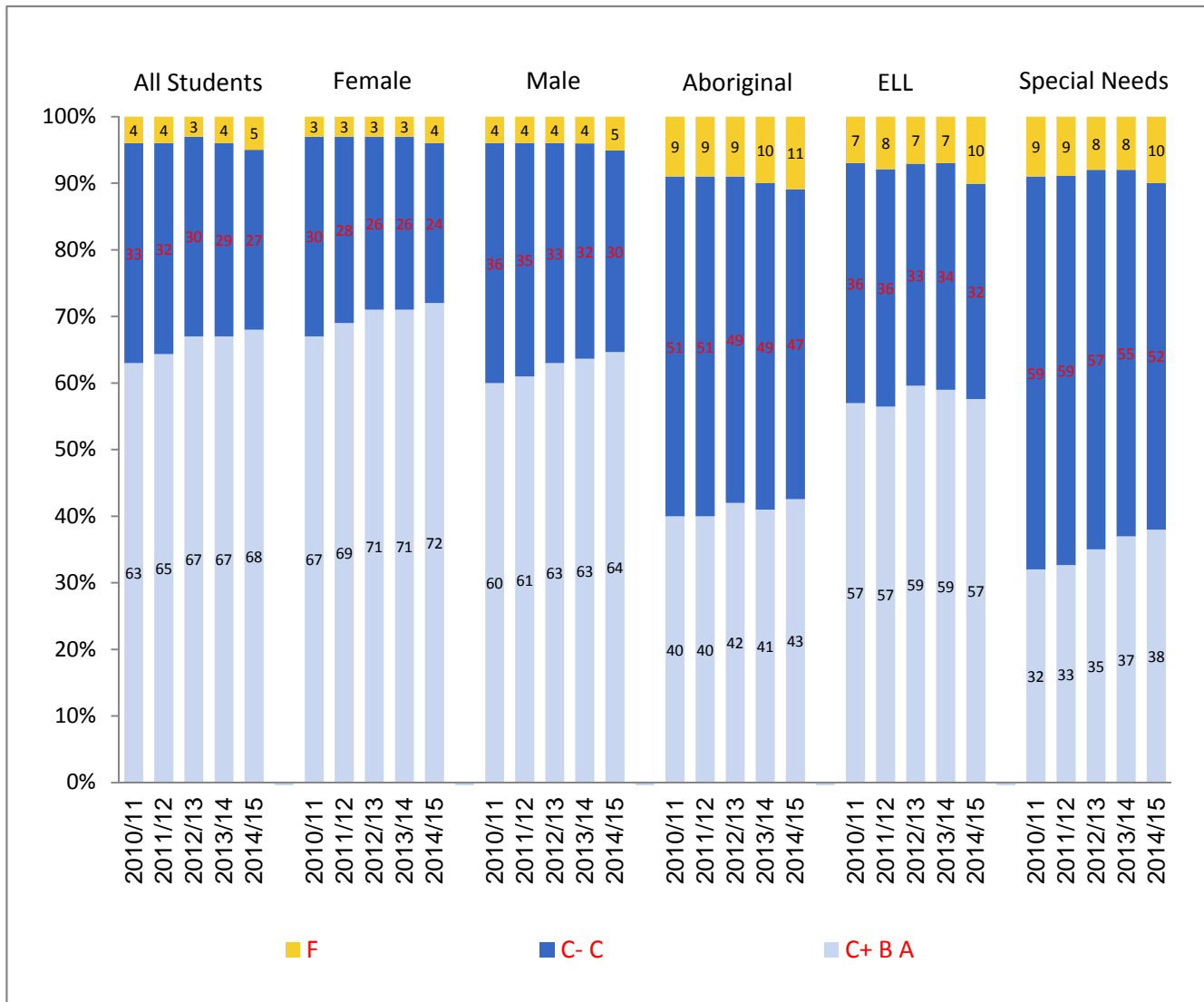
* Data represents only those students present in the school in September and/or February of year indicated

Provincial Required Examinations - 2014/15

Province - Public and Independent Schools Combined

SCIENCE 10 - Blended Final Marks

Distribution of Letter Grades by Subpopulation* - 2010/11 - 2014/15



* Due to rounding totals may not equal 100%

Provincial Required Examinations - 2014/15

Province - Public and Independent Schools Combined

SCIENCE 10 - Blended Final Marks

	School Year	Total Gr 10 Students*	Students Assigned Blended Final Mark	C- (pass) or Better		C+ (good) or Better			
				Province		Province			
				#	%	#	%		
Blended Final Marks	All Students	2010/11	60617	51244	49290	96	32481	63	
		2011/12	59304	50925	49008	96	32908	65	
		2012/13	55756	49131	47480	97	32930	67	
		2013/14	53620	47192	45470	96	31646	67	
		2014/15	52834	47235	45076	95	32104	68	
		Female	2010/11	30093	24922	24138	97	16681	67
			2011/12	29661	25066	24311	97	17195	69
			2012/13	27359	23900	23242	97	16960	71
			2013/14	26520	23316	22640	97	16544	71
			2014/15	25992	23279	22424	96	16739	72
		Male	2010/11	30524	26322	25152	96	15800	60
			2011/12	29643	25859	24697	96	15713	61
			2012/13	28397	25231	24238	96	15970	63
			2013/14	27100	23876	22830	96	15102	63
			2014/15	26842	23956	22652	95	15365	64
		Aboriginal	2010/11	6654	4611	4200	91	1826	40
			2011/12	6581	4624	4206	91	1861	40
			2012/13	6288	4565	4158	91	1926	42
			2013/14	5945	4290	3880	90	1759	41
			2014/15	5741	4325	3870	89	1858	43
	ELL	2010/11	2637	2667	2473	93	1517	57	
		2011/12	2638	2562	2359	92	1449	57	
		2012/13	2370	2367	2193	93	1404	59	
		2013/14	2219	2190	2030	93	1284	59	
		2014/15	1955	1909	1709	90	1096	57	
	Special Needs	2010/11	4482	3358	3048	91	1082	32	
		2011/12	4431	3419	3122	91	1121	33	
		2012/13	4451	3471	3196	92	1225	35	
		2013/14	4515	3548	3274	92	1322	37	
		2014/15	4365	3605	3258	90	1383	38	

Distribution of Letter Grades

	School Year	F		C-		C		C+		B		A		
		#	%	#	%	#	%	#	%	#	%	#	%	
		Blended Final Marks	All Students	2014/15	2159	5	6548	14	6424	14	6303	13	15035	32
	Female	2014/15	855	4	2814	12	2871	12	2969	13	7871	34	5899	25
	Male	2014/15	1304	5	3734	16	3553	15	3334	14	7164	30	4867	20
	Aboriginal	2014/15	455	11	1176	27	836	19	628	15	940	22	290	7
	ELL	2014/15	200	10	340	18	273	14	257	13	559	29	280	15
	Special Needs	2014/15	347	10	1033	29	842	23	565	16	658	18	160	4

* Data represents only those students present in the school in September and/or February of year indicated

Provincial Required Examinations - 2014/15

Province - Public and Independent Schools Combined

SCIENCE 10 - Exam Marks

Exam Marks	All Students	School Year	Total Gr 10 Students*	Students Assigned Exam Mark	C- (pass) or Better		C+ (good) or Better	
					Province		Province	
					#	%	#	%
		2010/11	60617	51244	46247	90	28248	55
		2011/12	59304	50925	46477	91	28559	56
		2012/13	55756	49131	45158	92	29724	60
		2013/14	53620	47192	42936	91	26817	57
		2014/15	52834	47235	43287	92	27709	59
	Female	2010/11	30093	24922	22393	90	13487	54
		2011/12	29661	25066	22851	91	14208	57
		2012/13	27359	23900	21898	92	14432	60
		2013/14	26520	23316	21145	91	13287	57
		2014/15	25992	23279	21309	92	13754	59
	Male	2010/11	30524	26322	23854	91	14761	56
		2011/12	29643	25859	23626	91	14351	55
		2012/13	28397	25231	23260	92	15292	61
		2013/14	27100	23876	21791	91	13530	57
		2014/15	26842	23956	21978	92	13955	58
	Aboriginal	2010/11	6654	4611	3600	78	1385	30
		2011/12	6581	4624	3652	79	1331	29
		2012/13	6288	4565	3702	81	1546	34
		2013/14	5945	4290	3357	78	1271	30
		2014/15	5741	4325	3442	80	1340	31
	ELL	2010/11	2637	2667	2266	85	1270	48
		2011/12	2638	2562	2205	86	1321	52
		2012/13	2370	2367	2027	86	1240	52
		2013/14	2219	2190	1859	85	1106	51
		2014/15	1955	1909	1608	84	949	50
	Special Needs	2010/11	4482	3358	2435	73	784	23
		2011/12	4431	3419	2512	73	740	22
		2012/13	4451	3471	2609	75	964	28
		2013/14	4515	3548	2696	76	940	26
		2014/15	4365	3605	2825	78	1000	28

Distribution of Letter Grades

Exam Marks	All Students	School Year	F		C-		C		C+		B		A	
			#	%	#	%	#	%	#	%	#	%	#	%
				2014/15	3948	8	6154	13	9424	20	11308	24	9923	21
	Female	2014/15	1970	8	3042	13	4513	19	5579	24	4974	21	3201	14
	Male	2014/15	1978	8	3112	13	4911	21	5729	24	4949	21	3277	14
	Aboriginal	2014/15	883	20	1013	23	1089	25	824	19	392	9	124	3
	ELL	2014/15	301	16	295	15	364	19	411	22	313	16	225	12
	Special Needs	2014/15	780	22	926	26	899	25	623	17	279	8	98	3

* Data represents only those students present in the school in September and/or February of year indicated

Provincial Required Examinations - 2014/15

Province - Public and Independent Schools Combined

SCIENCE 10 - Course Marks

Course Marks	All Students	School Year	Total Gr 10 Students*	Students Assigned Course Mark	C- (pass) or Better		C+ (good) or Better	
					Province		Province	
					#	%	#	%
		2010/11	60617	51244	49042	96	33755	66
		2011/12	59304	50925	48725	96	34111	67
		2012/13	55756	49131	47249	96	33928	69
		2013/14	53620	47192	45389	96	32740	69
		2014/15	52834	47235	45038	95	33135	70
	Female	2010/11	30093	24922	24071	97	17451	70
		2011/12	29661	25066	24262	97	17867	71
		2012/13	27359	23900	23164	97	17565	73
		2013/14	26520	23316	22630	97	17156	74
		2014/15	25992	23279	22437	96	17354	75
	Male	2010/11	30524	26322	24971	95	16304	62
		2011/12	29643	25859	24463	95	16244	63
		2012/13	28397	25231	24085	95	16363	65
		2013/14	27100	23876	22759	95	15584	65
		2014/15	26842	23956	22601	94	15781	66
	Aboriginal	2010/11	6654	4611	4187	91	2045	44
		2011/12	6581	4624	4178	90	2053	44
		2012/13	6288	4565	4118	90	2097	46
		2013/14	5945	4290	3868	90	1920	45
		2014/15	5741	4325	3880	90	2047	47
	ELL	2010/11	2637	2667	2475	93	1591	60
		2011/12	2638	2562	2362	92	1522	59
		2012/13	2370	2367	2194	93	1451	61
		2013/14	2219	2190	2035	93	1355	62
		2014/15	1955	1909	1715	90	1141	60
	Special Needs	2010/11	4482	3358	3019	90	1259	37
		2011/12	4431	3419	3092	90	1310	38
		2012/13	4451	3471	3179	92	1384	40
		2013/14	4515	3548	3259	92	1493	42
		2014/15	4365	3605	3257	90	1575	44

Distribution of Letter Grades

Course Marks	All Students	2014/15	F		C-		C		C+		B		A	
			#	%	#	%	#	%	#	%	#	%	#	%
					2014/15	2197	5	6115	13	5788	12	5352	11	14079
	Female	2014/15	842	4	2536	11	2547	11	2458	11	7248	31	7648	33
	Male	2014/15	1355	6	3579	15	3241	14	2894	12	6831	29	6056	25
	Aboriginal	2014/15	445	10	1056	24	777	18	591	14	977	23	479	11
	ELL	2014/15	194	10	325	17	249	13	223	12	563	29	355	19
	Special Needs	2014/15	348	10	911	25	771	21	547	15	770	21	258	7

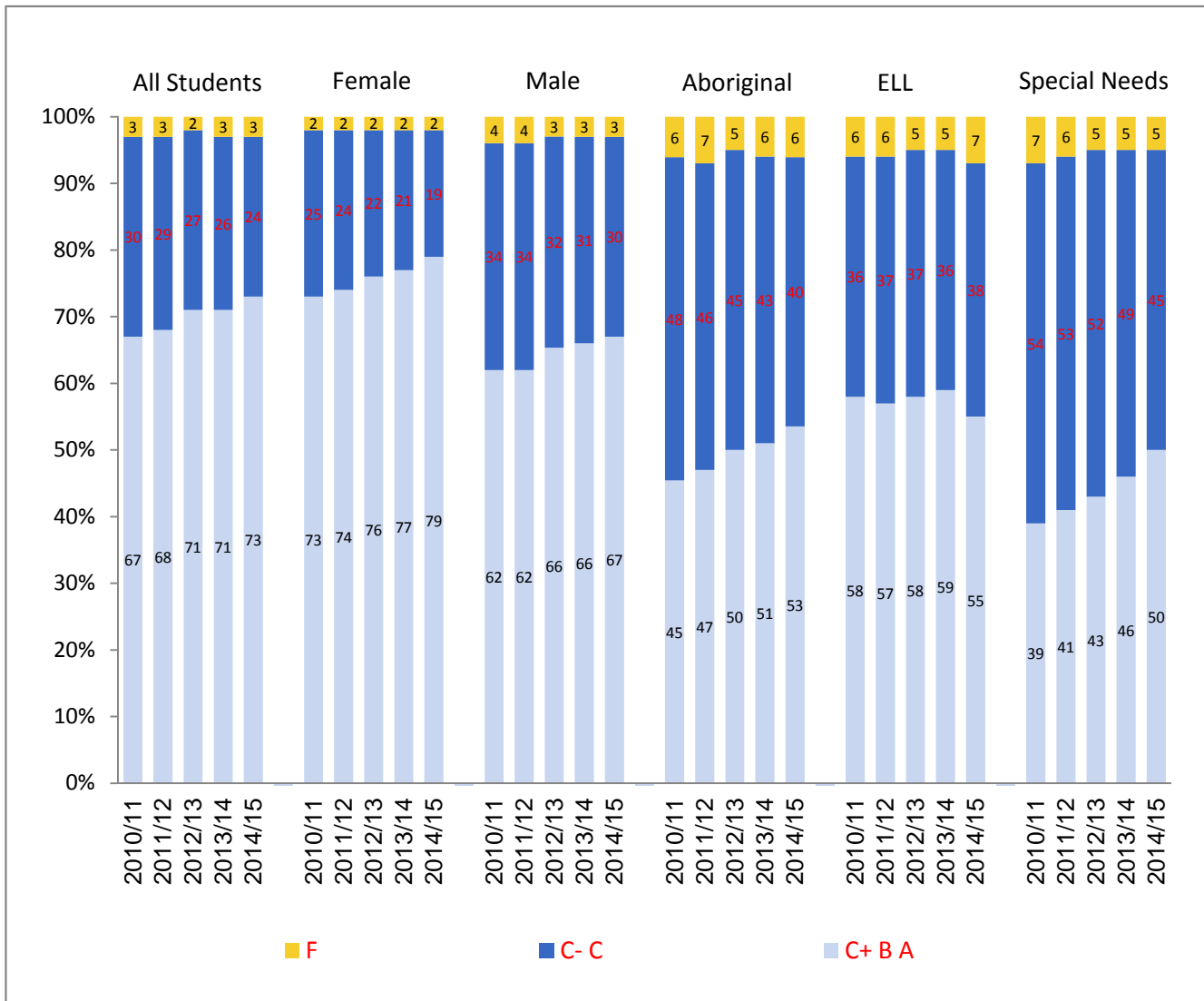
* Data represents only those students present in the school in September and/or February of year indicated

Provincial Required Examinations - 2014/15

Province - Public and Independent Schools Combined

SOCIAL STUDIES 11 - Blended Final Marks

Distribution of Letter Grades by Subpopulation* - 2010/11 - 2014/15



* Due to rounding totals may not equal 100%

Provincial Required Examinations - 2014/15

Province - Public and Independent Schools Combined

SOCIAL STUDIES 11 - Blended Final Marks

	School Year	Total Gr 11 Students*	Students Assigned Blended Final Mark	C- (pass) or Better		C+ (good) or Better		
				Province		Province		
				#	%	#	%	
Blended Final Marks	All Students	2010/11	64057	47415	46015	97	31936	67
		2011/12	61860	46997	45644	97	32041	68
		2012/13	60587	45617	44517	98	32229	71
		2013/14	58188	44343	43209	97	31648	71
		2014/15	56661	42502	41424	97	31055	73
Female		2010/11	31226	23241	22712	98	16850	73
		2011/12	30080	22836	22335	98	16948	74
		2012/13	29611	22409	21983	98	17007	76
		2013/14	28321	21759	21337	98	16725	77
		2014/15	27820	21020	20618	98	16587	79
Male		2010/11	32831	24174	23303	96	15086	62
		2011/12	31780	24161	23309	96	15093	62
		2012/13	30976	23208	22534	97	15222	66
		2013/14	29867	22584	21872	97	14923	66
		2014/15	28841	21482	20806	97	14468	67
Aboriginal		2010/11	6934	3244	3034	94	1474	45
		2011/12	6789	3184	2967	93	1489	47
		2012/13	6735	3200	3028	95	1602	50
		2013/14	6481	3085	2886	94	1572	51
		2014/15	6127	2976	2784	94	1584	53
ELL		2010/11	2916	1698	1602	94	989	58
		2011/12	2743	1673	1580	94	958	57
		2012/13	2349	1607	1522	95	934	58
		2013/14	2273	1633	1545	95	961	59
		2014/15	1857	1115	1035	93	612	55
Special Needs		2010/11	4461	2567	2387	93	1002	39
		2011/12	4400	2525	2374	94	1047	41
		2012/13	4441	2587	2448	95	1102	43
		2013/14	4570	2810	2671	95	1301	46
		2014/15	4715	2891	2751	95	1454	50

Distribution of Letter Grades

	School Year	F		C-		C		C+		B		A		
		#	%	#	%	#	%	#	%	#	%	#	%	
		Blended Final Marks	All Students	2014/15	1078	3	4719	11	5650	13	5723	13	14416	34
	Female	2014/15	402	2	1790	9	2241	11	2626	12	7554	36	6407	30
	Male	2014/15	676	3	2929	14	3409	16	3097	14	6862	32	4509	21
	Aboriginal	2014/15	192	6	608	20	592	20	468	16	765	26	351	12
	ELL	2014/15	80	7	199	18	224	20	170	15	329	30	113	10
	Special Needs	2014/15	140	5	657	23	640	22	499	17	730	25	225	8

* Data represents only those students present in the school in September and/or February of year indicated

Provincial Required Examinations - 2014/15

Province - Public and Independent Schools Combined

SOCIAL STUDIES 11 - Exam Marks

Exam Marks	School Year	Total Gr 11 Students*	Students Assigned Exam Mark	C- (pass) or Better		C+ (good) or Better	
				Province		Province	
				#	%	#	%
All Students	2010/11	64057	47415	42930	91	26695	56
	2011/12	61860	46997	43395	92	27787	59
	2012/13	60587	45617	42694	94	28213	62
	2013/14	58188	44343	41148	93	27082	61
	2014/15	56661	42502	40447	95	27830	65
Female	2010/11	31226	23241	20791	89	12732	55
	2011/12	30080	22836	20991	92	13423	59
	2012/13	29611	22409	20903	93	13622	61
	2013/14	28321	21759	20046	92	13029	60
	2014/15	27820	21020	19996	95	13724	65
Male	2010/11	32831	24174	22139	92	13963	58
	2011/12	31780	24161	22404	93	14364	59
	2012/13	30976	23208	21791	94	14591	63
	2013/14	29867	22584	21102	93	14053	62
	2014/15	28841	21482	20451	95	14106	66
Aboriginal	2010/11	6934	3244	2629	81	1191	37
	2011/12	6789	3184	2725	86	1290	41
	2012/13	6735	3200	2835	89	1410	44
	2013/14	6481	3085	2687	87	1324	43
	2014/15	6127	2976	2732	92	1448	49
ELL	2010/11	2916	1698	1405	83	690	41
	2011/12	2743	1673	1412	84	652	39
	2012/13	2349	1607	1355	84	671	42
	2013/14	2273	1633	1356	83	717	44
	2014/15	1857	1115	943	85	465	42
Special Needs	2010/11	4461	2567	1956	76	758	30
	2011/12	4400	2525	2072	82	868	34
	2012/13	4441	2587	2180	84	914	35
	2013/14	4570	2810	2352	84	1115	40
	2014/15	4715	2891	2634	91	1320	46

Distribution of Letter Grades

Exam Marks	School Year	F		C-		C		C+		B		A	
		#	%	#	%	#	%	#	%	#	%	#	%
		All Students	2014/15	2055	5	4121	10	8496	20	10059	24	8963	21
Female	2014/15	1024	5	2122	10	4150	20	4815	23	4336	21	4573	22
Male	2014/15	1031	5	1999	9	4346	20	5244	24	4627	22	4235	20
Aboriginal	2014/15	244	8	473	16	811	27	750	25	442	15	256	9
ELL	2014/15	172	15	219	20	259	23	225	20	143	13	97	9
Special Needs	2014/15	257	9	537	19	777	27	692	24	393	14	235	8

* Data represents only those students present in the school in September and/or February of year indicated

Provincial Required Examinations - 2014/15

Province - Public and Independent Schools Combined

SOCIAL STUDIES 11 - Course Marks

Course Marks	All Students	School Year	Total Gr 11 Students*	Students Assigned Course Mark	C- (pass) or Better		C+ (good) or Better	
					Province		Province	
					#	%	#	%
		2010/11	64057	47415	45808	97	33157	70
		2011/12	61860	46997	45387	97	33060	70
		2012/13	60587	45617	44340	97	33061	72
		2013/14	58188	44343	42992	97	32489	73
		2014/15	56661	42502	41270	97	31655	74
	Female	2010/11	31226	23241	22692	98	17639	76
		2011/12	30080	22836	22294	98	17557	77
		2012/13	29611	22409	21959	98	17546	78
		2013/14	28321	21759	21294	98	17281	79
		2014/15	27820	21020	20602	98	16989	81
	Male	2010/11	32831	24174	23116	96	15518	64
		2011/12	31780	24161	23093	96	15503	64
		2012/13	30976	23208	22381	96	15515	67
		2013/14	29867	22584	21698	96	15208	67
		2014/15	28841	21482	20668	96	14666	68
	Aboriginal	2010/11	6934	3244	3019	93	1597	49
		2011/12	6789	3184	2929	92	1591	50
		2012/13	6735	3200	2997	94	1692	53
		2013/14	6481	3085	2840	92	1659	54
		2014/15	6127	2976	2760	93	1648	55
	ELL	2010/11	2916	1698	1605	95	1071	63
		2011/12	2743	1673	1581	95	1033	62
		2012/13	2349	1607	1523	95	1002	62
		2013/14	2273	1633	1543	94	1021	63
		2014/15	1857	1115	1043	94	665	60
	Special Needs	2010/11	4461	2567	2379	93	1138	44
		2011/12	4400	2525	2341	93	1143	45
		2012/13	4441	2587	2429	94	1216	47
		2013/14	4570	2810	2642	94	1424	51
		2014/15	4715	2891	2736	95	1528	53

Distribution of Letter Grades

Course Marks	All Students	2014/15	F		C-		C		C+		B		A	
			#	%	#	%	#	%	#	%	#	%	#	%
					2014/15	1232	3	4632	11	4983	12	4882	11	13361
	Female	2014/15	418	2	1667	8	1946	9	2147	10	6823	32	8019	38
	Male	2014/15	814	4	2965	14	3037	14	2735	13	6538	30	5393	25
	Aboriginal	2014/15	216	7	585	20	527	18	392	13	784	26	472	16
	ELL	2014/15	72	6	188	17	190	17	165	15	330	30	170	15
	Special Needs	2014/15	155	5	634	22	574	20	458	16	750	26	320	11

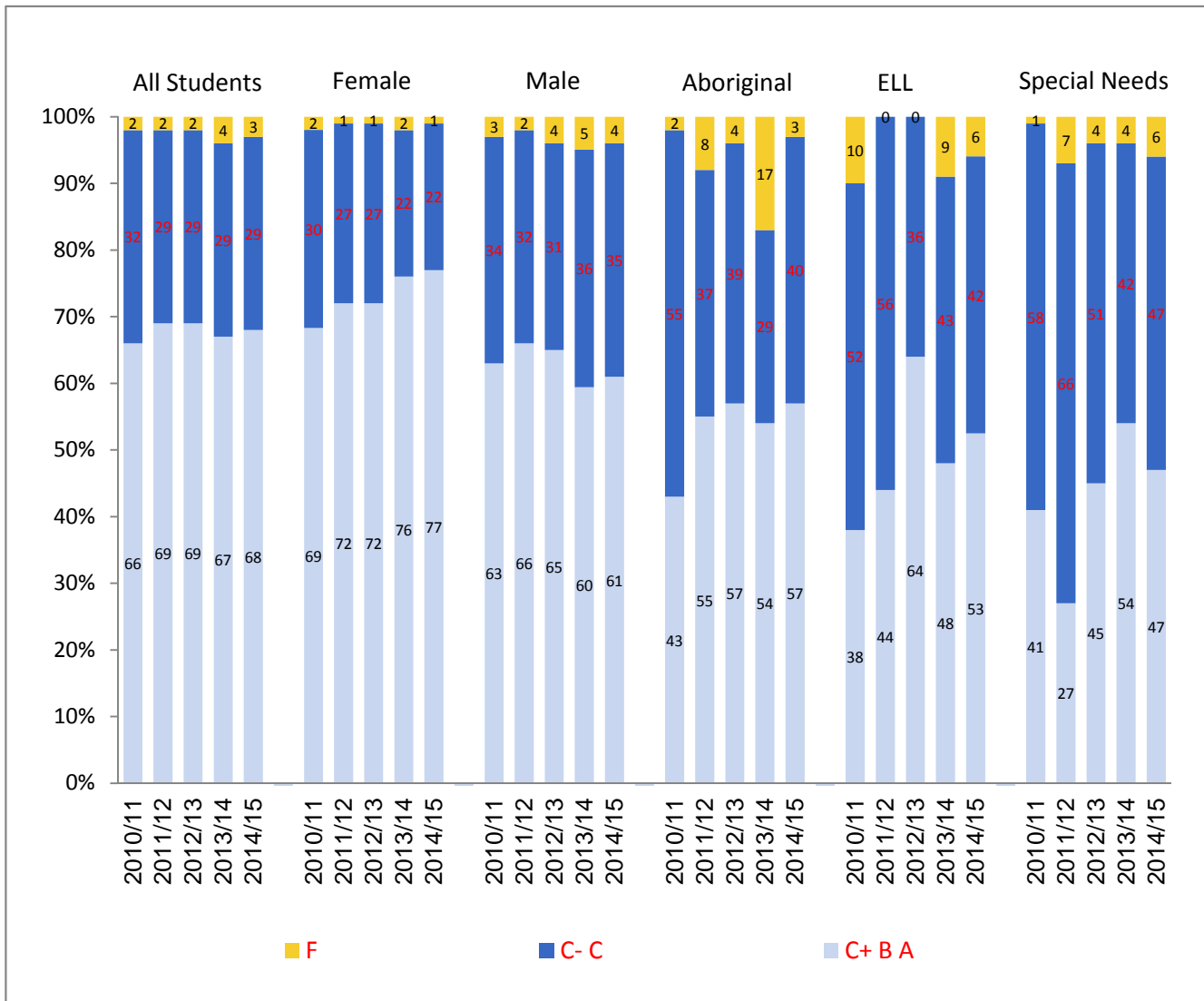
* Data represents only those students present in the school in September and/or February of year indicated

Provincial Required Examinations - 2014/15

Province - Public and Independent Schools Combined

CIVIC STUDIES 11 - Blended Final Marks

Distribution of Letter Grades by Subpopulation* - 2010/11 - 2014/15



* Due to rounding totals may not equal 100%

Provincial Required Examinations - 2014/15

Province - Public and Independent Schools Combined

CIVIC STUDIES 11 - Blended Final Marks

	School Year	Total Gr 11 Students*	Students Assigned Blended Final Mark	C- (pass) or Better		C+ (good) or Better		
				Province		Province		
				#	%	#	%	
Blended Final Marks	All Students	2010/11	64057	975	952	98	643	66
		2011/12	61860	939	922	98	648	69
		2012/13	60587	1011	988	98	695	69
		2013/14	58188	872	841	96	586	67
		2014/15	56661	852	829	97	578	68
Female		2010/11	31226	497	488	98	341	69
		2011/12	30080	507	500	99	365	72
		2012/13	29611	527	522	99	380	72
		2013/14	28321	405	396	98	307	76
		2014/15	27820	372	369	99	287	77
Male		2010/11	32831	478	464	97	302	63
		2011/12	31780	432	422	98	283	66
		2012/13	30976	484	466	96	315	65
		2013/14	29867	467	445	95	279	60
		2014/15	28841	480	460	96	291	61
Aboriginal		2010/11	6934	82	80	98	35	43
		2011/12	6789	100	92	92	55	55
		2012/13	6735	112	108	96	64	57
		2013/14	6481	99	82	83	53	54
		2014/15	6127	67	65	97	38	57
ELL		2010/11	2916	21	19	90	8	38
		2011/12	2743	18	18	100	8	44
		2012/13	2349	25	25	100	16	64
		2013/14	2273	23	21	91	11	48
		2014/15	1857	36	34	94	19	53
Special Needs		2010/11	4461	74	73	99	30	41
		2011/12	4400	71	66	93	19	27
		2012/13	4441	80	77	96	36	45
		2013/14	4570	95	91	96	51	54
		2014/15	4715	85	80	94	40	47

Distribution of Letter Grades

	School Year	F		C-		C		C+		B		A		
		#	%	#	%	#	%	#	%	#	%	#	%	
		Blended Final Marks	All Students	2014/15	23	3	109	13	142	17	122	14	268	31
	Female	2014/15	3	1	25	7	57	15	49	13	131	35	107	29
	Male	2014/15	20	4	84	18	85	18	73	15	137	29	81	17
	Aboriginal	2014/15	2	3	13	19	14	21	11	16	17	25	10	15
	ELL	2014/15	2	6	5	14	10	28	4	11	15	42	0	0
	Special Needs	2014/15	5	6	25	29	15	18	15	18	21	25	4	5

* Data represents only those students present in the school in September and/or February of year indicated

Provincial Required Examinations - 2014/15

Province - Public and Independent Schools Combined

CIVIC STUDIES 11 - Exam Marks

Exam Marks	School Year	Total Gr 11 Students*	Students Assigned Exam Mark	C- (pass) or Better		C+ (good) or Better	
				Province		Province	
				#	%	#	%
All Students	2010/11	64057	975	870	89	459	47
	2011/12	61860	939	887	94	497	53
	2012/13	60587	1011	931	92	465	46
	2013/14	58188	872	798	92	425	49
	2014/15	56661	852	794	93	457	54
Female	2010/11	31226	497	444	89	208	42
	2011/12	30080	507	478	94	262	52
	2012/13	29611	527	486	92	222	42
	2013/14	28321	405	376	93	198	49
	2014/15	27820	372	354	95	198	53
Male	2010/11	32831	478	426	89	251	53
	2011/12	31780	432	409	95	235	54
	2012/13	30976	484	445	92	243	50
	2013/14	29867	467	422	90	227	49
	2014/15	28841	480	440	92	259	54
Aboriginal	2010/11	6934	82	65	79	23	28
	2011/12	6789	100	88	88	38	38
	2012/13	6735	112	98	88	31	28
	2013/14	6481	99	80	81	34	34
	2014/15	6127	67	58	87	29	43
ELL	2010/11	2916	21	13	62	5	24
	2011/12	2743	18	13	72	2	11
	2012/13	2349	25	20	80	10	40
	2013/14	2273	23	16	70	9	39
	2014/15	1857	36	31	86	8	22
Special Needs	2010/11	4461	74	55	74	16	22
	2011/12	4400	71	51	72	11	15
	2012/13	4441	80	63	79	19	24
	2013/14	4570	95	83	87	24	25
	2014/15	4715	85	67	79	23	27

Distribution of Letter Grades

Exam Marks	School Year	F		C-		C		C+		B		A	
		#	%	#	%	#	%	#	%	#	%	#	%
		All Students	2014/15	58	7	134	16	203	24	197	23	141	17
Female	2014/15	18	5	55	15	101	27	87	23	64	17	47	13
Male	2014/15	40	8	79	16	102	21	110	23	77	16	72	15
Aboriginal	2014/15	9	13	14	21	15	22	19	28	6	9	4	6
ELL	2014/15	5	14	10	28	13	36	7	19	0	0	1	3
Special Needs	2014/15	18	21	15	18	29	34	9	11	9	11	5	6

* Data represents only those students present in the school in September and/or February of year indicated

Provincial Required Examinations - 2014/15

Province - Public and Independent Schools Combined

CIVIC STUDIES 11 - Course Marks

Course Marks	All Students	School Year	Total Gr 11 Students*	Students Assigned Course Mark	C- (pass) or Better		C+ (good) or Better	
					Province		Province	
					#	%	#	%
		2010/11	64057	975	951	98	690	71
		2011/12	61860	939	920	98	660	70
		2012/13	60587	1011	986	98	747	74
		2013/14	58188	872	841	96	625	72
		2014/15	56661	852	827	97	595	70
	Female	2010/11	31226	497	490	99	368	74
		2011/12	30080	507	498	98	374	74
		2012/13	29611	527	521	99	410	78
		2013/14	28321	405	398	98	326	80
		2014/15	27820	372	368	99	299	80
	Male	2010/11	32831	478	461	96	322	67
		2011/12	31780	432	422	98	286	66
		2012/13	30976	484	465	96	337	70
		2013/14	29867	467	443	95	299	64
		2014/15	28841	480	459	96	296	62
	Aboriginal	2010/11	6934	82	80	98	39	48
		2011/12	6789	100	95	95	58	58
		2012/13	6735	112	109	97	71	63
		2013/14	6481	99	83	84	59	60
		2014/15	6127	67	64	96	43	64
	ELL	2010/11	2916	21	19	90	13	62
		2011/12	2743	18	18	100	10	56
		2012/13	2349	25	24	96	19	76
		2013/14	2273	23	22	96	13	57
		2014/15	1857	36	34	94	21	58
	Special Needs	2010/11	4461	74	72	97	40	54
		2011/12	4400	71	65	92	23	32
		2012/13	4441	80	76	95	39	49
		2013/14	4570	95	90	95	56	59
		2014/15	4715	85	81	95	46	54

Distribution of Letter Grades

Course Marks	All Students	2014/15	F		C-		C		C+		B		A	
			#	%	#	%	#	%	#	%	#	%	#	%
					25	3	105	12	127	15	90	11	253	30
	Female	2014/15	4	1	28	8	41	11	36	10	118	32	145	39
	Male	2014/15	21	4	77	16	86	18	54	11	135	28	107	22
	Aboriginal	2014/15	3	4	10	15	11	16	14	21	15	22	14	21
	ELL	2014/15	2	6	4	11	9	25	1	3	18	50	2	6
	Special Needs	2014/15	4	5	22	26	13	15	17	20	20	24	9	11

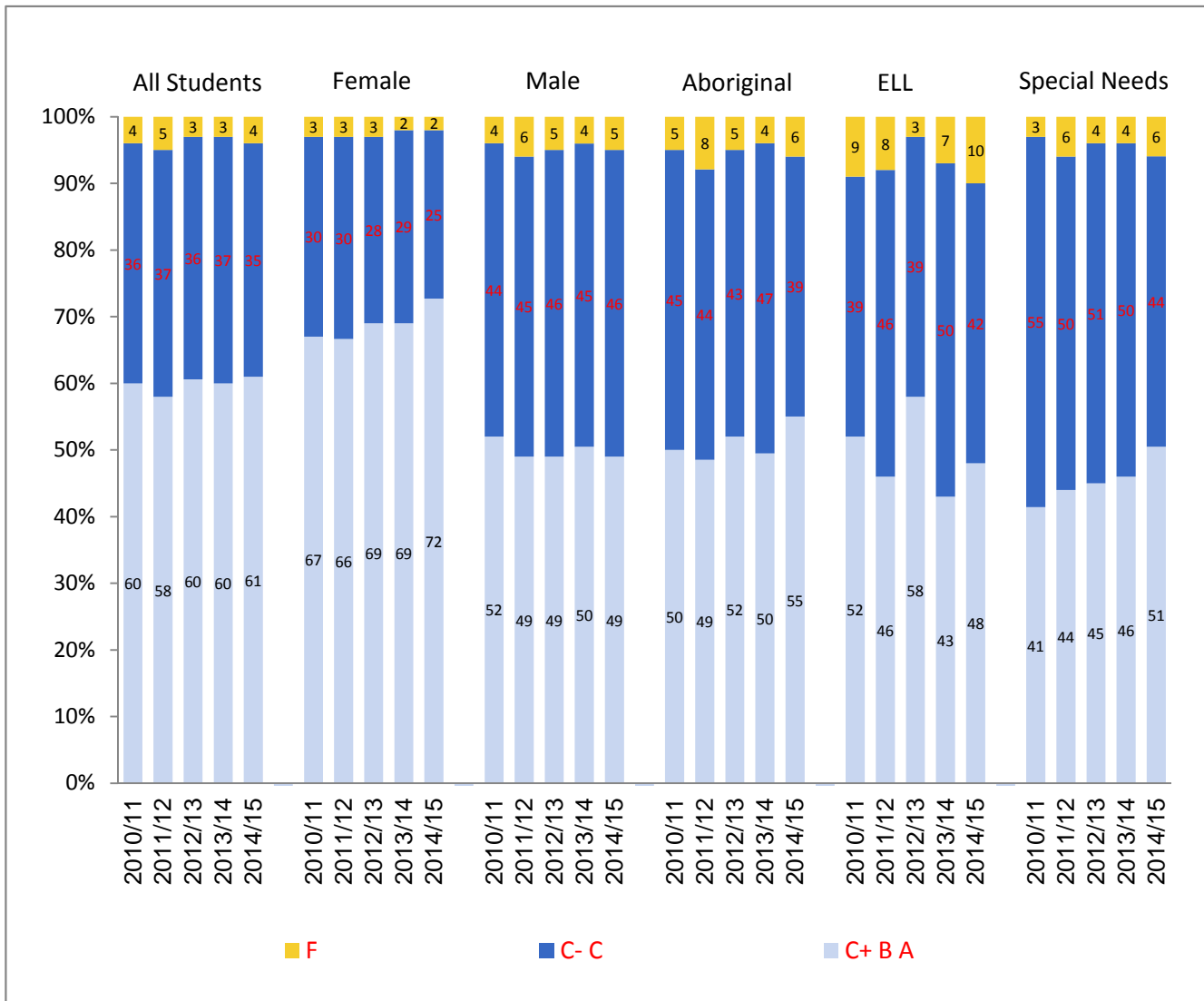
* Data represents only those students present in the school in September and/or February of year indicated

Provincial Required Examinations - 2014/15

Province - Public and Independent Schools Combined

BC FIRST NATIONS STUDIES 12 - Blended Final Marks

Distribution of Letter Grades by Subpopulation* - 2010/11 - 2014/15



* Due to rounding totals may not equal 100%

Provincial Required Examinations - 2014/15

Province - Public and Independent Schools Combined

BC FIRST NATIONS STUDIES 12 - Blended Final Marks

	School Year	Total Gr 12 Students*	Students Assigned Blended Final Mark	C- (pass) or Better		C+ (good) or Better		
				Province		Province		
				#	%	#	%	
Blended Final Marks	All Students	2010/11	70865	2698	2600	96	1620	60
		2011/12	69897	2573	2456	95	1505	58
		2012/13	68315	2557	2469	97	1541	60
		2013/14	66888	2464	2392	97	1486	60
		2014/15	63248	2530	2432	96	1551	61
Female		2010/11	35534	1473	1424	97	989	67
		2011/12	34815	1406	1357	97	933	66
		2012/13	33866	1393	1358	97	965	69
		2013/14	33050	1332	1308	98	916	69
		2014/15	31136	1335	1302	98	965	72
Male		2010/11	35331	1225	1176	96	631	52
		2011/12	35082	1167	1099	94	572	49
		2012/13	34449	1164	1111	95	576	49
		2013/14	33838	1132	1084	96	570	50
		2014/15	32112	1195	1130	95	586	49
Aboriginal		2010/11	6742	934	887	95	467	50
		2011/12	6603	865	800	92	421	49
		2012/13	6783	871	826	95	452	52
		2013/14	6819	846	814	96	419	50
		2014/15	6597	889	832	94	489	55
ELL		2010/11	1742	66	60	91	34	52
		2011/12	1703	63	58	92	29	46
		2012/13	1528	74	72	97	43	58
		2013/14	1656	58	54	93	25	43
		2014/15	1482	88	79	90	42	48
Special Needs		2010/11	3775	315	304	97	130	41
		2011/12	3960	337	318	94	149	44
		2012/13	4173	335	323	96	151	45
		2013/14	4525	353	339	96	161	46
		2014/15	4625	355	335	94	180	51

Distribution of Letter Grades

	School Year	F		C-		C		C+		B		A		
		#	%	#	%	#	%	#	%	#	%	#	%	
		Blended Final Marks	All Students	2014/15	98	4	412	16	469	19	391	15	807	32
	Female	2014/15	33	2	153	11	184	14	208	16	497	37	260	19
	Male	2014/15	65	5	259	22	285	24	183	15	310	26	93	8
	Aboriginal	2014/15	57	6	160	18	183	21	151	17	267	30	71	8
	ELL	2014/15	9	10	15	17	22	25	17	19	22	25	3	3
	Special Needs	2014/15	20	6	79	22	76	21	71	20	97	27	12	3

* Data represents only those students present in the school in September and/or February of year indicated

Provincial Required Examinations - 2014/15

Province - Public and Independent Schools Combined

BC FIRST NATIONS STUDIES 12 - Exam Marks

Exam Marks	School Year	Total Gr 12 Students*	Students Assigned Exam Mark	C- (pass) or Better		C+ (good) or Better	
				Province		Province	
				#	%	#	%
All Students	2010/11	70865	2698	2425	90	1138	42
	2011/12	69897	2573	2268	88	1052	41
	2012/13	68315	2557	2292	90	1059	41
	2013/14	66888	2464	2205	89	961	39
	2014/15	63248	2530	2280	90	1018	40
Female	2010/11	35534	1473	1325	90	643	44
	2011/12	34815	1406	1249	89	601	43
	2012/13	33866	1393	1246	89	618	44
	2013/14	33050	1332	1204	90	584	44
	2014/15	31136	1335	1227	92	596	45
Male	2010/11	35331	1225	1100	90	495	40
	2011/12	35082	1167	1019	87	451	39
	2012/13	34449	1164	1046	90	441	38
	2013/14	33838	1132	1001	88	377	33
	2014/15	32112	1195	1053	88	422	35
Aboriginal	2010/11	6742	934	805	86	331	35
	2011/12	6603	865	738	85	285	33
	2012/13	6783	871	768	88	300	34
	2013/14	6819	846	740	87	250	30
	2014/15	6597	889	788	89	313	35
ELL	2010/11	1742	66	37	56	12	18
	2011/12	1703	63	48	76	16	25
	2012/13	1528	74	56	76	9	12
	2013/14	1656	58	41	71	7	12
	2014/15	1482	88	72	82	14	16
Special Needs	2010/11	3775	315	260	83	86	27
	2011/12	3960	337	283	84	93	28
	2012/13	4173	335	289	86	96	29
	2013/14	4525	353	298	84	77	22
	2014/15	4625	355	302	85	104	29

Distribution of Letter Grades

Exam Marks	School Year	F		C-		C		C+		B		A	
		#	%	#	%	#	%	#	%	#	%	#	%
		All Students	2014/15	250	10	614	24	648	26	542	21	324	13
Female	2014/15	108	8	311	23	320	24	288	22	196	15	112	8
Male	2014/15	142	12	303	25	328	27	254	21	128	11	40	3
Aboriginal	2014/15	101	11	230	26	245	28	193	22	88	10	32	4
ELL	2014/15	16	18	33	38	25	28	7	8	6	7	1	1
Special Needs	2014/15	53	15	102	29	96	27	75	21	22	6	7	2

* Data represents only those students present in the school in September and/or February of year indicated

Provincial Required Examinations - 2014/15

Province - Public and Independent Schools Combined

BC FIRST NATIONS STUDIES 12 - Course Marks

Course Marks	All Students	School Year	Total Gr 12 Students*	Students Assigned Blended Final Mark	C- (pass) or Better		C+ (good) or Better	
					Province		Province	
					#	%	#	%
		2010/11	70865	2698	2576	95	1715	64
		2011/12	69897	2573	2449	95	1613	63
		2012/13	68315	2557	2453	96	1641	64
		2013/14	66888	2464	2388	97	1572	64
		2014/15	63248	2530	2421	96	1653	65
	Female	2010/11	35534	1473	1417	96	1050	71
		2011/12	34815	1406	1362	97	1001	71
		2012/13	33866	1393	1354	97	1021	73
		2013/14	33050	1332	1305	98	961	72
		2014/15	31136	1335	1298	97	1014	76
	Male	2010/11	35331	1225	1159	95	665	54
		2011/12	35082	1167	1087	93	612	52
		2012/13	34449	1164	1099	94	620	53
		2013/14	33838	1132	1083	96	611	54
		2014/15	32112	1195	1123	94	639	53
	Aboriginal	2010/11	6742	934	876	94	499	53
		2011/12	6603	865	794	92	473	55
		2012/13	6783	871	814	93	486	56
		2013/14	6819	846	812	96	455	54
		2014/15	6597	889	834	94	517	58
	ELL	2010/11	1742	66	60	91	43	65
		2011/12	1703	63	59	94	35	56
		2012/13	1528	74	72	97	47	64
		2013/14	1656	58	54	93	32	55
		2014/15	1482	88	80	91	54	61
	Special Needs	2010/11	3775	315	297	94	152	48
		2011/12	3960	337	316	94	166	49
		2012/13	4173	335	320	96	159	47
		2013/14	4525	353	334	95	171	48
		2014/15	4625	355	335	94	194	55

Distribution of Letter Grades

Course Marks	All Students	2014/15	F		C-		C		C+		B		A	
			#	%	#	%	#	%	#	%	#	%	#	%
					109	4	352	14	416	16	337	13	745	29
	Female	2014/15	37	3	123	9	161	12	168	13	431	32	415	31
	Male	2014/15	72	6	229	19	255	21	169	14	314	26	156	13
	Aboriginal	2014/15	55	6	143	16	174	20	121	14	273	31	123	14
	ELL	2014/15	8	9	14	16	12	14	17	19	25	28	12	14
	Special Needs	2014/15	20	6	66	19	75	21	48	14	110	31	36	10

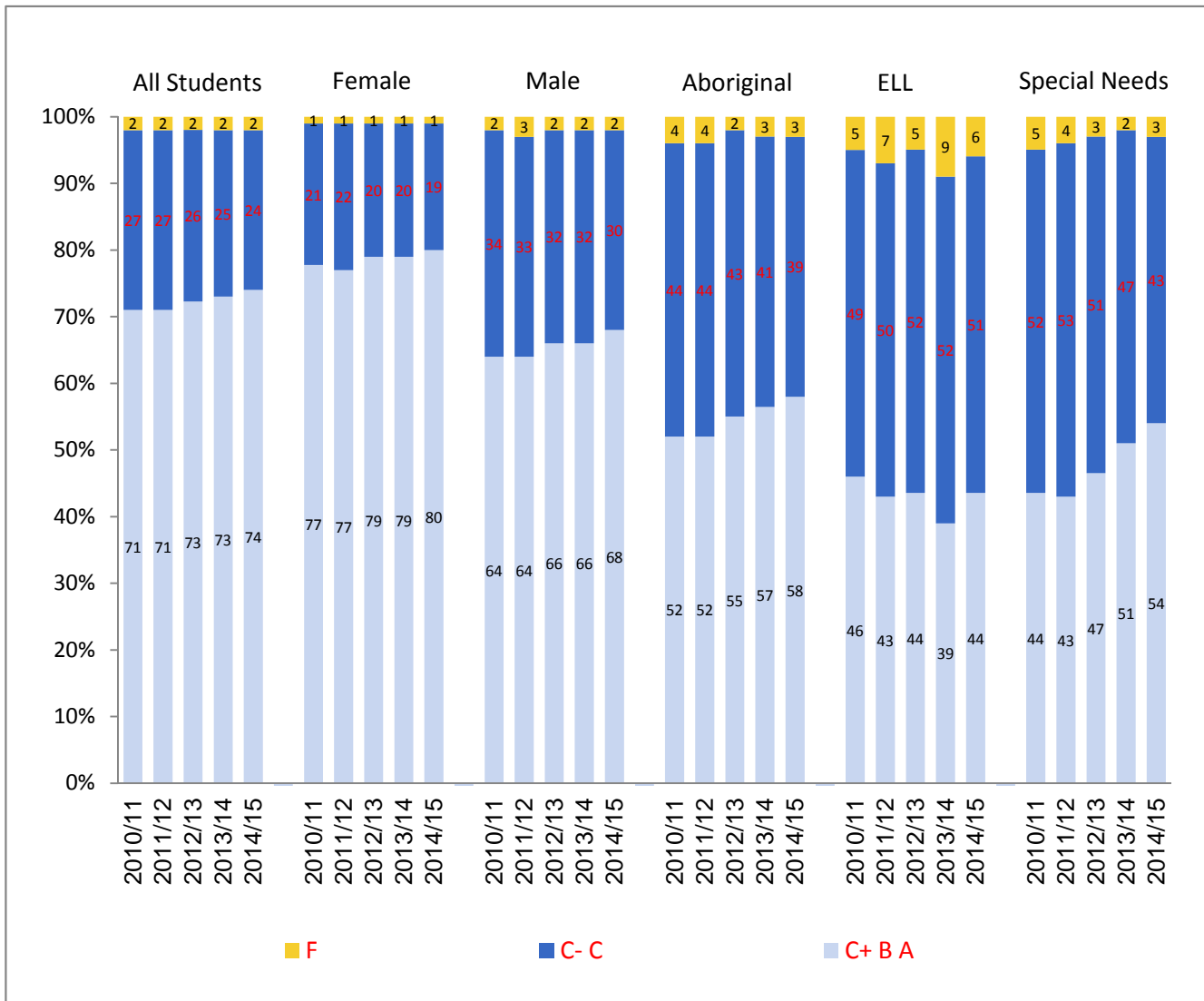
* Data represents only those students present in the school in September and/or February of year indicated

Provincial Required Examinations - 2014/15

Province - Public and Independent Schools Combined

ENGLISH 12 - Blended Final Marks

Distribution of Letter Grades by Subpopulation* - 2010/11 - 2014/15



* Due to rounding totals may not equal 100%

Provincial Required Examinations - 2014/15

Province - Public and Independent Schools Combined

ENGLISH 12 - Blended Final Marks

	School Year	Total Gr 12 Students*	Students Assigned Blended Final Mark	C- (pass) or Better		C+ (good) or Better			
				Province		Province			
				#	%	#	%		
Blended Final Marks	All Students	2010/11	70865	45004	44260	98	31965	71	
		2011/12	69897	44983	44123	98	31790	71	
		2012/13	68315	44877	44160	98	32635	73	
		2013/14	66888	43894	43139	98	31963	73	
		2014/15	63248	42505	41838	98	31551	74	
		Female	2010/11	35534	23285	23014	99	18021	77
			2011/12	34815	23007	22701	99	17707	77
			2012/13	33866	23087	22840	99	18314	79
			2013/14	33050	22846	22565	99	18054	79
			2014/15	31136	22097	21828	99	17653	80
		Male	2010/11	35331	21719	21246	98	13944	64
			2011/12	35082	21976	21422	97	14083	64
			2012/13	34449	21790	21320	98	14321	66
			2013/14	33838	21048	20574	98	13909	66
			2014/15	32112	20408	20010	98	13898	68
		Aboriginal	2010/11	6742	2503	2395	96	1305	52
			2011/12	6603	2541	2437	96	1322	52
			2012/13	6783	2643	2577	98	1447	55
			2013/14	6819	2625	2552	97	1486	57
			2014/15	6597	2558	2469	97	1472	58
	ELL	2010/11	1742	765	727	95	355	46	
		2011/12	1703	719	672	93	310	43	
		2012/13	1528	683	652	95	299	44	
		2013/14	1656	785	716	91	308	39	
		2014/15	1482	605	571	94	265	44	
	Special Needs	2010/11	3775	1397	1328	95	608	44	
		2011/12	3960	1450	1388	96	624	43	
		2012/13	4173	1524	1485	97	711	47	
		2013/14	4525	1790	1753	98	911	51	
		2014/15	4625	1832	1781	97	993	54	

Distribution of Letter Grades

	School Year	F		C-		C		C+		B		A		
		#	%	#	%	#	%	#	%	#	%	#	%	
		Blended Final Marks	All Students	2014/15	667	2	4383	10	5904	14	7303	17	17183	40
	Female	2014/15	269	1	1688	8	2487	11	3421	15	9511	43	4721	21
	Male	2014/15	398	2	2695	13	3417	17	3882	19	7672	38	2344	11
	Aboriginal	2014/15	89	3	481	19	516	20	477	19	817	32	178	7
	ELL	2014/15	34	6	170	28	136	22	116	19	130	21	19	3
	Special Needs	2014/15	51	3	358	20	430	23	396	22	514	28	83	5

* Data represents only those students present in the school in September and/or February of year indicated

Provincial Required Examinations - 2014/15

Province - Public and Independent Schools Combined

ENGLISH 12 - Exam Marks

Exam Marks	All Students	School Year	Total Gr 12 Students*	Students Assigned Exam Mark	C- (pass) or Better		C+ (good) or Better	
					Province		Province	
					#	%	#	%
		2010/11	70865	45004	41629	93	27057	60
		2011/12	69897	44983	40984	91	26972	60
		2012/13	68315	44877	41340	92	28203	63
		2013/14	66888	43894	40094	91	26964	61
		2014/15	63248	42505	39143	92	26797	63
	Female	2010/11	35534	23285	21877	94	15185	65
		2011/12	34815	23007	21315	93	15017	65
		2012/13	33866	23087	21613	94	15789	68
		2013/14	33050	22846	21220	93	15298	67
		2014/15	31136	22097	20526	93	14850	67
	Male	2010/11	35331	21719	19752	91	11872	55
		2011/12	35082	21976	19669	90	11955	54
		2012/13	34449	21790	19727	91	12414	57
		2013/14	33838	21048	18874	90	11666	55
		2014/15	32112	20408	18617	91	11947	59
	Aboriginal	2010/11	6742	2503	2192	88	1085	43
		2011/12	6603	2541	2226	88	1210	48
		2012/13	6783	2643	2395	91	1316	50
		2013/14	6819	2625	2327	89	1231	47
		2014/15	6597	2558	2297	90	1223	48
	ELL	2010/11	1742	765	548	72	180	24
		2011/12	1703	719	444	62	141	20
		2012/13	1528	683	439	64	145	21
		2013/14	1656	785	467	59	163	21
		2014/15	1482	605	397	66	150	25
	Special Needs	2010/11	3775	1397	1123	80	472	34
		2011/12	3960	1450	1178	81	506	35
		2012/13	4173	1524	1275	84	607	40
		2013/14	4525	1790	1521	85	677	38
		2014/15	4625	1832	1593	87	769	42

Distribution of Letter Grades

Exam Marks	All Students	2014/15	F		C-		C		C+		B		A	
			#	%	#	%	#	%	#	%	#	%	#	%
					2014/15	3362	8	4819	11	7527	18	9325	22	11656
	Female	2014/15	1571	7	2184	10	3492	16	4776	22	6394	29	3680	17
	Male	2014/15	1791	9	2635	13	4035	20	4549	22	5262	26	2136	10
	Aboriginal	2014/15	261	10	448	18	626	24	601	23	472	18	150	6
	ELL	2014/15	208	34	137	23	110	18	73	12	65	11	12	2
	Special Needs	2014/15	239	13	375	20	449	25	392	21	291	16	86	5

* Data represents only those students present in the school in September and/or February of year indicated

Provincial Required Examinations - 2014/15

Province - Public and Independent Schools Combined

ENGLISH 12 - Course Marks

Course Marks	All Students	School Year	Total Gr 12 Students*	Students Assigned Course Mark	C- (pass) or Better		C+ (good) or Better	
					Province		Province	
					#	%	#	%
		2010/11	70865	45004	43972	98	34566	77
		2011/12	69897	44983	43965	98	34744	77
		2012/13	68315	44877	43953	98	35262	79
		2013/14	66888	43894	43051	98	34833	79
		2014/15	63248	42505	41745	98	34122	80
	Female	2010/11	35534	23285	22911	98	19254	83
		2011/12	34815	23007	22652	98	19114	83
		2012/13	33866	23087	22767	99	19473	84
		2013/14	33050	22846	22531	99	19379	85
		2014/15	31136	22097	21812	99	18948	86
	Male	2010/11	35331	21719	21061	97	15312	71
		2011/12	35082	21976	21313	97	15630	71
		2012/13	34449	21790	21186	97	15789	72
		2013/14	33838	21048	20520	97	15454	73
		2014/15	32112	20408	19933	98	15174	74
	Aboriginal	2010/11	6742	2503	2367	95	1484	59
		2011/12	6603	2541	2395	94	1487	59
		2012/13	6783	2643	2523	95	1637	62
		2013/14	6819	2625	2521	96	1677	64
		2014/15	6597	2558	2436	95	1661	65
	ELL	2010/11	1742	765	743	97	521	68
		2011/12	1703	719	693	96	501	70
		2012/13	1528	683	664	97	484	71
		2013/14	1656	785	751	96	509	65
		2014/15	1482	605	581	96	402	66
	Special Needs	2010/11	3775	1397	1323	95	782	56
		2011/12	3960	1450	1372	95	811	56
		2012/13	4173	1524	1461	96	892	59
		2013/14	4525	1790	1730	97	1127	63
		2014/15	4625	1832	1771	97	1186	65

Distribution of Letter Grades

Course Marks	All Students	2014/15	F		C-		C		C+		B		A	
			#	%	#	%	#	%	#	%	#	%	#	%
					760	2	3302	8	4321	10	5518	13	16114	38
	Female	2014/15	285	1	1155	5	1709	8	2479	11	8376	38	8093	37
	Male	2014/15	475	2	2147	11	2612	13	3039	15	7738	38	4397	22
	Aboriginal	2014/15	122	5	396	15	379	15	436	17	803	31	422	16
	ELL	2014/15	24	4	81	13	98	16	107	18	233	39	62	10
	Special Needs	2014/15	61	3	258	14	327	18	339	19	637	35	210	11

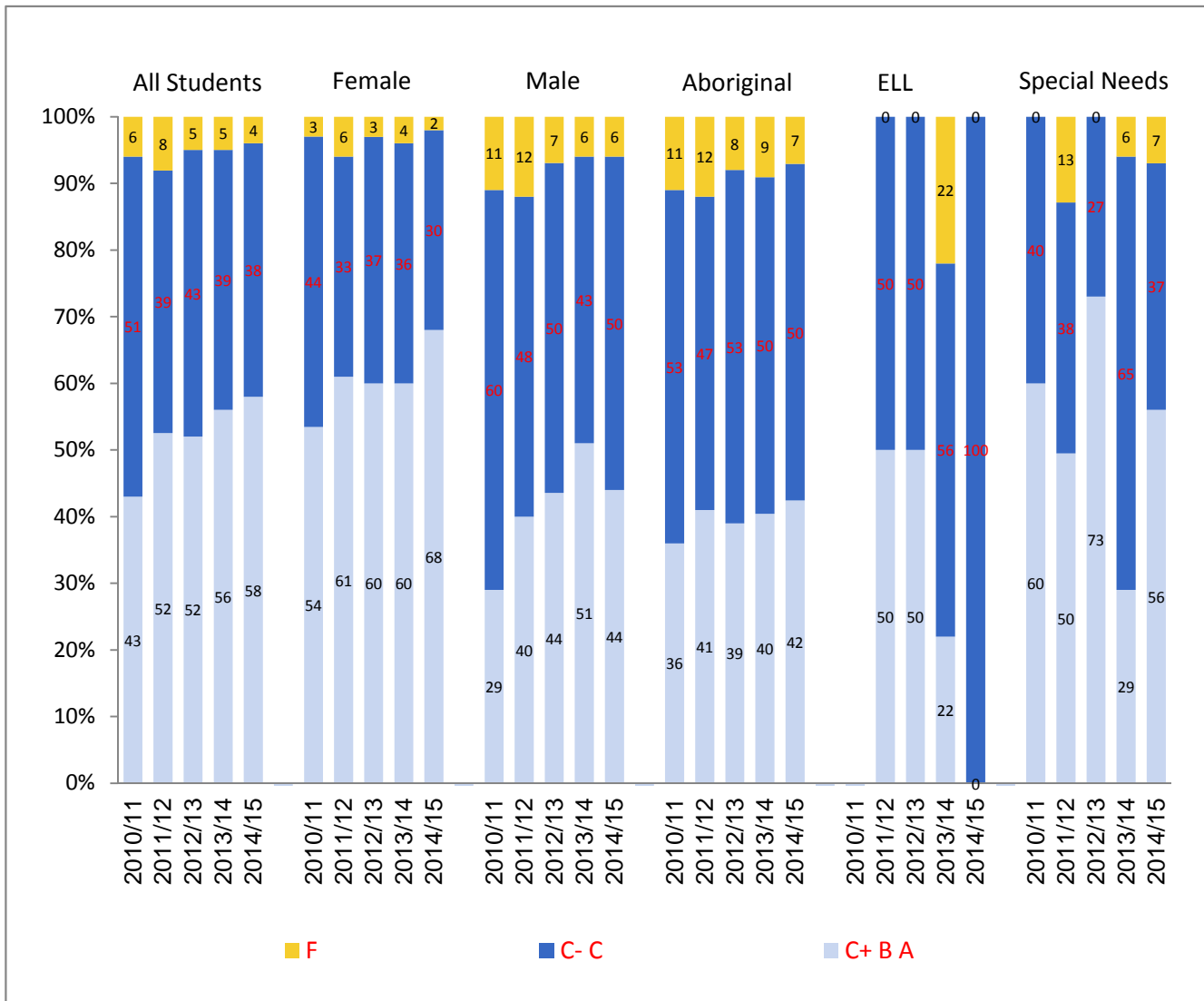
* Data represents only those students present in the school in September and/or February of year indicated

Provincial Required Examinations - 2014/15

Province - Public and Independent Schools Combined

ENGLISH 12: FIRST PEOPLES - Blended Final Marks

Distribution of Letter Grades by Subpopulation* - 2010/11 - 2014/15



* Due to rounding totals may not equal 100%

Provincial Required Examinations - 2014/15

Province - Public and Independent Schools Combined

ENGLISH 12: FIRST PEOPLES - Blended Final Marks

	School Year	Total Gr 12 Students*	Students Assigned Blended Final Mark	C- (pass) or Better		C+ (good) or Better		
				Province		Province		
				#	%	#	%	
Blended Final Marks	All Students	2010/11	70865	249	233	94	107	43
		2011/12	69897	212	194	92	111	52
		2012/13	68315	205	195	95	106	52
		2013/14	66888	322	306	95	181	56
		2014/15	63248	279	268	96	163	58
Female		2010/11	35534	140	136	97	75	54
		2011/12	34815	127	119	94	77	61
		2012/13	33866	102	99	97	61	60
		2013/14	33050	182	174	96	109	60
		2014/15	31136	169	165	98	115	68
Male		2010/11	35331	109	97	89	32	29
		2011/12	35082	85	75	88	34	40
		2012/13	34449	103	96	93	45	44
		2013/14	33838	140	132	94	72	51
		2014/15	32112	110	103	94	48	44
Aboriginal		2010/11	6742	113	101	89	41	36
		2011/12	6603	111	98	88	46	41
		2012/13	6783	111	102	92	43	39
		2013/14	6819	139	126	91	56	40
		2014/15	6597	121	112	93	51	42
ELL		2010/11	1742	-	-	-	-	-
		2011/12	1703	2	2	100	1	50
		2012/13	1528	2	2	100	1	50
		2013/14	1656	9	7	78	2	22
		2014/15	1482	5	5	100	0	0
Special Needs		2010/11	3775	5	5	100	3	60
		2011/12	3960	8	7	88	4	50
		2012/13	4173	15	15	100	11	73
		2013/14	4525	17	16	94	5	29
		2014/15	4625	27	25	93	15	56

		Distribution of Letter Grades												
		F		C-		C		C+		B		A		
		#	%	#	%	#	%	#	%	#	%	#	%	
Blended Final Marks	All Students	2014/15	11	4	49	18	56	20	49	18	76	27	38	14
	Female	2014/15	4	2	21	12	29	17	28	17	56	33	31	18
	Male	2014/15	7	6	28	25	27	25	21	19	20	18	7	6
	Aboriginal	2014/15	9	7	33	27	28	23	18	15	24	20	9	7
	ELL	2014/15	0	0	0	0	5	100	0	0	0	0	0	0
	Special Needs	2014/15	2	7	3	11	7	26	5	19	9	33	1	4

* Data represents only those students present in the school in September and/or February of year indicated

Provincial Required Examinations - 2014/15

Province - Public and Independent Schools Combined

ENGLISH 12: FIRST PEOPLES - Exam Marks

Exam Marks	School Year	Total Gr 12 Students*	Students Assigned Exam Mark	C- (pass) or Better		C+ (good) or Better	
				Province		Province	
				#	%	#	%
All Students	2010/11	70865	249	158	63	93	37
	2011/12	69897	212	144	68	91	43
	2012/13	68315	205	150	73	94	46
	2013/14	66888	322	228	71	116	36
	2014/15	63248	279	218	78	148	53
Female	2010/11	35534	140	97	69	68	49
	2011/12	34815	127	93	73	61	48
	2012/13	33866	102	81	79	51	50
	2013/14	33050	182	135	74	69	38
	2014/15	31136	169	137	81	102	60
Male	2010/11	35331	109	61	56	25	23
	2011/12	35082	85	51	60	30	35
	2012/13	34449	103	69	67	43	42
	2013/14	33838	140	93	66	47	34
	2014/15	32112	110	81	74	46	42
Aboriginal	2010/11	6742	113	57	50	30	27
	2011/12	6603	111	66	59	33	30
	2012/13	6783	111	68	61	32	29
	2013/14	6819	139	79	57	32	23
	2014/15	6597	121	78	64	42	35
ELL	2010/11	1742	-	-	-	-	-
	2011/12	1703	2	1	50	0	0
	2012/13	1528	2	1	50	1	50
	2013/14	1656	9	4	44	1	11
	2014/15	1482	5	3	60	2	40
Special Needs	2010/11	3775	5	4	80	2	40
	2011/12	3960	8	5	63	5	63
	2012/13	4173	15	12	80	10	67
	2013/14	4525	17	8	47	4	24
	2014/15	4625	27	21	78	14	52

Distribution of Letter Grades

Exam Marks	School Year	F		C-		C		C+		B		A	
		#	%	#	%	#	%	#	%	#	%	#	%
		All Students	2014/15	61	22	35	13	35	13	48	17	61	22
Female	2014/15	32	19	16	9	19	11	23	14	48	28	31	18
Male	2014/15	29	26	19	17	16	15	25	23	13	12	8	7
Aboriginal	2014/15	43	36	16	13	20	17	17	14	17	14	8	7
ELL	2014/15	2	40	0	0	1	20	2	40	0	0	0	0
Special Needs	2014/15	6	22	2	7	5	19	7	26	6	22	1	4

* Data represents only those students present in the school in September and/or February of year indicated

Provincial Required Examinations - 2014/15

Province - Public and Independent Schools Combined

ENGLISH 12: FIRST PEOPLES - Course Marks

Course Marks	All Students	School Year	Total Gr 12 Students*	Students Assigned Course Mark	C- (pass) or Better		C+ (good) or Better	
					Province		Province	
					#	%	#	%
		2010/11	70865	249	238	96	159	64
		2011/12	69897	212	200	94	134	63
		2012/13	68315	205	199	97	123	60
		2013/14	66888	322	317	98	240	75
		2014/15	63248	279	273	98	193	69
	Female	2010/11	35534	140	137	98	97	69
		2011/12	34815	127	121	95	86	68
		2012/13	33866	102	99	97	71	70
		2013/14	33050	182	180	99	139	76
		2014/15	31136	169	166	98	133	79
	Male	2010/11	35331	109	101	93	62	57
		2011/12	35082	85	79	93	48	56
		2012/13	34449	103	100	97	52	50
		2013/14	33838	140	137	98	101	72
		2014/15	32112	110	107	97	60	55
	Aboriginal	2010/11	6742	113	107	95	74	65
		2011/12	6603	111	104	94	63	57
		2012/13	6783	111	108	97	56	50
		2013/14	6819	139	135	97	91	65
		2014/15	6597	121	117	97	78	64
	ELL	2010/11	1742	-	-	-	-	-
		2011/12	1703	2	2	100	2	100
		2012/13	1528	2	2	100	2	100
		2013/14	1656	9	7	78	4	44
		2014/15	1482	5	5	100	2	40
	Special Needs	2010/11	3775	5	5	100	3	60
		2011/12	3960	8	7	88	4	50
		2012/13	4173	15	15	100	13	87
		2013/14	4525	17	17	100	11	65
		2014/15	4625	27	26	96	18	67

Distribution of Letter Grades

Course Marks	All Students	2014/15	F		C-		C		C+		B		A	
			#	%	#	%	#	%	#	%	#	%	#	%
					2014/15	6	2	34	12	46	16	53	19	79
	Female	2014/15	3	2	13	8	20	12	30	18	57	34	46	27
	Male	2014/15	3	3	21	19	26	24	23	21	22	20	15	14
	Aboriginal	2014/15	4	3	18	15	21	17	27	22	28	23	23	19
	ELL	2014/15	0	0	1	20	2	40	0	0	1	20	1	20
	Special Needs	2014/15	1	4	5	19	3	11	5	19	11	41	2	7

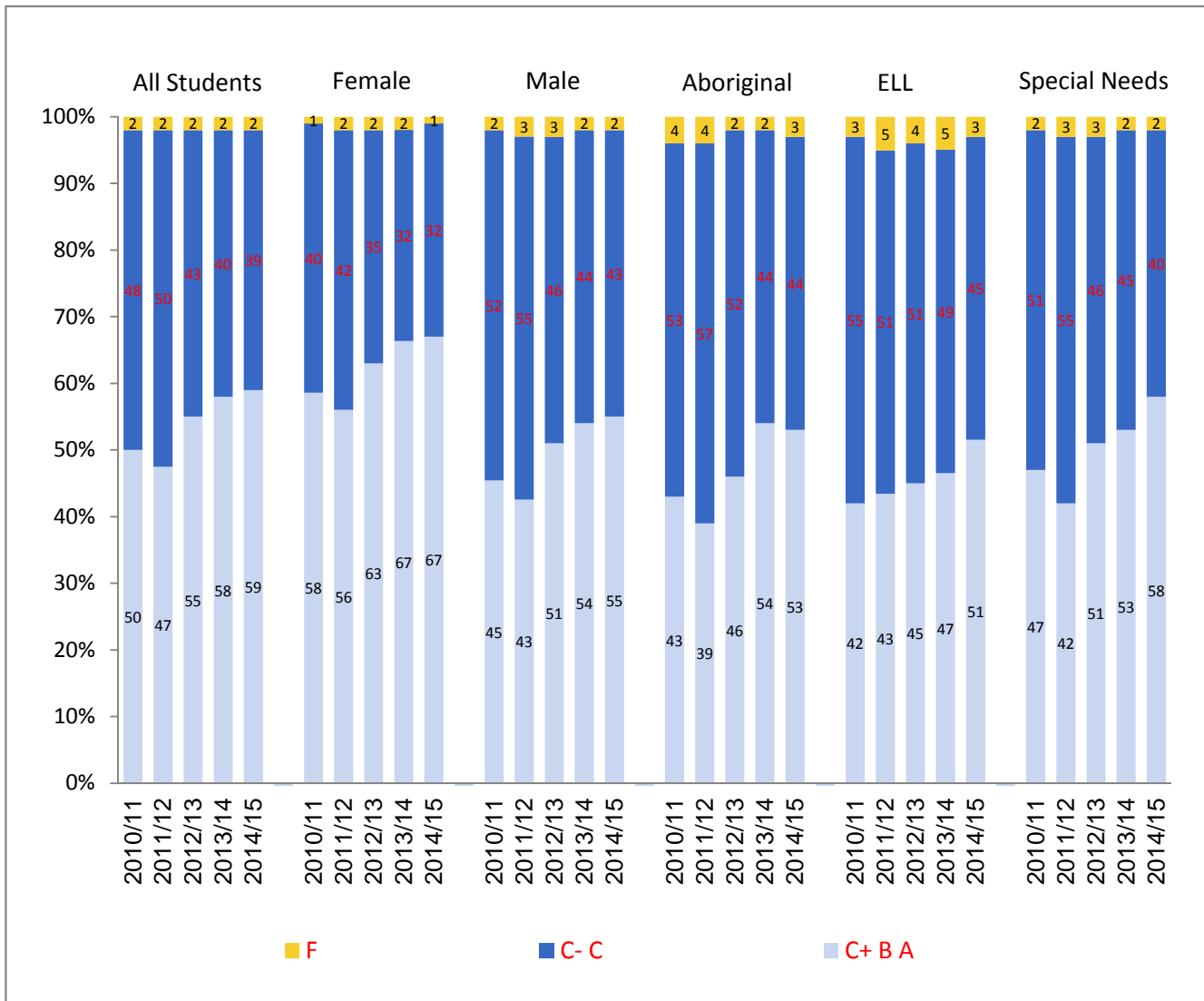
* Data represents only those students present in the school in September and/or February of year indicated

Provincial Required Examinations - 2014/15

Province - Public and Independent Schools Combined

COMMUNICATIONS 12 - Blended Final Marks

Distribution of Letter Grades by Subpopulation* - 2010/11 - 2014/15



* Due to rounding totals may not equal 100%

Provincial Required Examinations - 2014/15

Province - Public and Independent Schools Combined

COMMUNICATIONS 12 - Blended Final Marks

	School Year	Total Gr 12 Students*	Students Assigned Blended Final Mark	C- (pass) or Better		C+ (good) or Better		
				Province		Province		
				#	%	#	%	
Blended Final Marks	All Students	2010/11	70865	5910	5792	98	2939	50
		2011/12	69897	5985	5836	98	2818	47
		2012/13	68315	5864	5731	98	3230	55
		2013/14	66888	5759	5635	98	3345	58
		2014/15	63248	5542	5429	98	3274	59
Female		2010/11	35534	2002	1975	99	1168	58
		2011/12	34815	2006	1973	98	1125	56
		2012/13	33866	1880	1848	98	1182	63
		2013/14	33050	1821	1793	98	1219	67
		2014/15	31136	1841	1816	99	1235	67
Male		2010/11	35331	3908	3817	98	1771	45
		2011/12	35082	3979	3863	97	1693	43
		2012/13	34449	3984	3883	97	2048	51
		2013/14	33838	3938	3842	98	2126	54
		2014/15	32112	3701	3613	98	2039	55
Aboriginal		2010/11	6742	1081	1043	96	468	43
		2011/12	6603	1012	975	96	397	39
		2012/13	6783	987	964	98	451	46
		2013/14	6819	980	961	98	531	54
		2014/15	6597	935	905	97	496	53
ELL		2010/11	1742	219	212	97	91	42
		2011/12	1703	268	254	95	116	43
		2012/13	1528	257	247	96	116	45
		2013/14	1656	236	225	95	110	47
		2014/15	1482	245	237	97	126	51
Special Needs		2010/11	3775	1133	1106	98	527	47
		2011/12	3960	1175	1143	97	499	42
		2012/13	4173	1207	1172	97	613	51
		2013/14	4525	1198	1178	98	635	53
		2014/15	4625	1227	1202	98	714	58

Distribution of Letter Grades

	School Year	F		C-		C		C+		B		A		
		#	%	#	%	#	%	#	%	#	%	#	%	
		Blended Final Marks	All Students	2014/15	113	2	825	15	1330	24	1354	24	1740	31
	Female	2014/15	25	1	218	12	363	20	439	24	705	38	91	5
	Male	2014/15	88	2	607	16	967	26	915	25	1035	28	89	2
	Aboriginal	2014/15	30	3	165	18	244	26	228	24	244	26	24	3
	ELL	2014/15	8	3	53	22	58	24	58	24	65	27	3	1
	Special Needs	2014/15	25	2	185	15	303	25	308	25	357	29	49	4

* Data represents only those students present in the school in September and/or February of year indicated

Provincial Required Examinations - 2014/15

Province - Public and Independent Schools Combined

COMMUNICATIONS 12 - Exam Marks

Exam Marks	School Year	Total Gr 12 Students*	Students Assigned Exam Mark	C- (pass) or Better		C+ (good) or Better	
				Province		Province	
				#	%	#	%
All Students	2010/11	70865	5910	5220	88	2974	50
	2011/12	69897	5985	5166	86	2676	45
	2012/13	68315	5864	5306	90	3244	55
	2013/14	66888	5759	5230	91	3317	58
	2014/15	63248	5542	5042	91	3208	58
Female	2010/11	35534	2002	1798	90	1074	54
	2011/12	34815	2006	1746	87	935	47
	2012/13	33866	1880	1711	91	1075	57
	2013/14	33050	1821	1668	92	1076	59
	2014/15	31136	1841	1684	91	1102	60
Male	2010/11	35331	3908	3422	88	1900	49
	2011/12	35082	3979	3420	86	1741	44
	2012/13	34449	3984	3595	90	2169	54
	2013/14	33838	3938	3562	90	2241	57
	2014/15	32112	3701	3358	91	2106	57
Aboriginal	2010/11	6742	1081	925	86	517	48
	2011/12	6603	1012	854	84	433	43
	2012/13	6783	987	899	91	541	55
	2013/14	6819	980	902	92	572	58
	2014/15	6597	935	842	90	509	54
ELL	2010/11	1742	219	171	78	62	28
	2011/12	1703	268	200	75	90	34
	2012/13	1528	257	209	81	95	37
	2013/14	1656	236	196	83	85	36
	2014/15	1482	245	199	81	95	39
Special Needs	2010/11	3775	1133	984	87	531	47
	2011/12	3960	1175	996	85	474	40
	2012/13	4173	1207	1098	91	650	54
	2013/14	4525	1198	1093	91	677	57
	2014/15	4625	1227	1128	92	728	59

Distribution of Letter Grades

Exam Marks	School Year	F		C-		C		C+		B		A	
		#	%	#	%	#	%	#	%	#	%	#	%
		All Students	2014/15	500	9	696	13	1138	21	1443	26	1236	22
Female	2014/15	157	9	224	12	358	19	472	26	420	23	210	11
Male	2014/15	343	9	472	13	780	21	971	26	816	22	319	9
Aboriginal	2014/15	93	10	140	15	193	21	223	24	212	23	74	8
ELL	2014/15	46	19	43	18	61	25	59	24	25	10	11	4
Special Needs	2014/15	99	8	160	13	240	20	312	25	297	24	119	10

* Data represents only those students present in the school in September and/or February of year indicated

Provincial Required Examinations - 2014/15

Province - Public and Independent Schools Combined

COMMUNICATIONS 12 - Course Marks

Course Marks	All Students	School Year	Total Gr 12 Students*	Students Assigned Course Mark	C- (pass) or Better		C+ (good) or Better	
					Province		Province	
					#	%	#	%
		2010/11	70865	5910	5668	96	3134	53
		2011/12	69897	5985	5734	96	3194	53
		2012/13	68315	5864	5641	96	3315	57
		2013/14	66888	5759	5538	96	3388	59
		2014/15	63248	5542	5333	96	3375	61
	Female	2010/11	35534	2002	1946	97	1224	61
		2011/12	34815	2006	1948	97	1255	63
		2012/13	33866	1880	1828	97	1213	65
		2013/14	33050	1821	1769	97	1253	69
		2014/15	31136	1841	1796	98	1284	70
	Male	2010/11	35331	3908	3722	95	1910	49
		2011/12	35082	3979	3786	95	1939	49
		2012/13	34449	3984	3813	96	2102	53
		2013/14	33838	3938	3769	96	2135	54
		2014/15	32112	3701	3537	96	2091	56
	Aboriginal	2010/11	6742	1081	1023	95	494	46
		2011/12	6603	1012	944	93	466	46
		2012/13	6783	987	934	95	450	46
		2013/14	6819	980	921	94	523	53
		2014/15	6597	935	884	95	519	56
	ELL	2010/11	1742	219	210	96	117	53
		2011/12	1703	268	255	95	168	63
		2012/13	1528	257	248	96	155	60
		2013/14	1656	236	228	97	145	61
		2014/15	1482	245	239	98	152	62
	Special Needs	2010/11	3775	1133	1093	96	587	52
		2011/12	3960	1175	1114	95	605	51
		2012/13	4173	1207	1139	94	635	53
		2013/14	4525	1198	1151	96	639	53
		2014/15	4625	1227	1177	96	720	59

Distribution of Letter Grades

Course Marks	All Students	School Year	F		C-		C		C+		B		A	
			#	%	#	%	#	%	#	%	#	%	#	%
				2014/15	209	4	904	16	1054	19	1018	18	1836	33
	Female	2014/15	45	2	214	12	298	16	311	17	713	39	260	14
	Male	2014/15	164	4	690	19	756	20	707	19	1123	30	261	7
	Aboriginal	2014/15	51	5	184	20	181	19	176	19	270	29	73	8
	ELL	2014/15	6	2	40	16	47	19	54	22	77	31	21	9
	Special Needs	2014/15	50	4	210	17	247	20	235	19	382	31	103	8

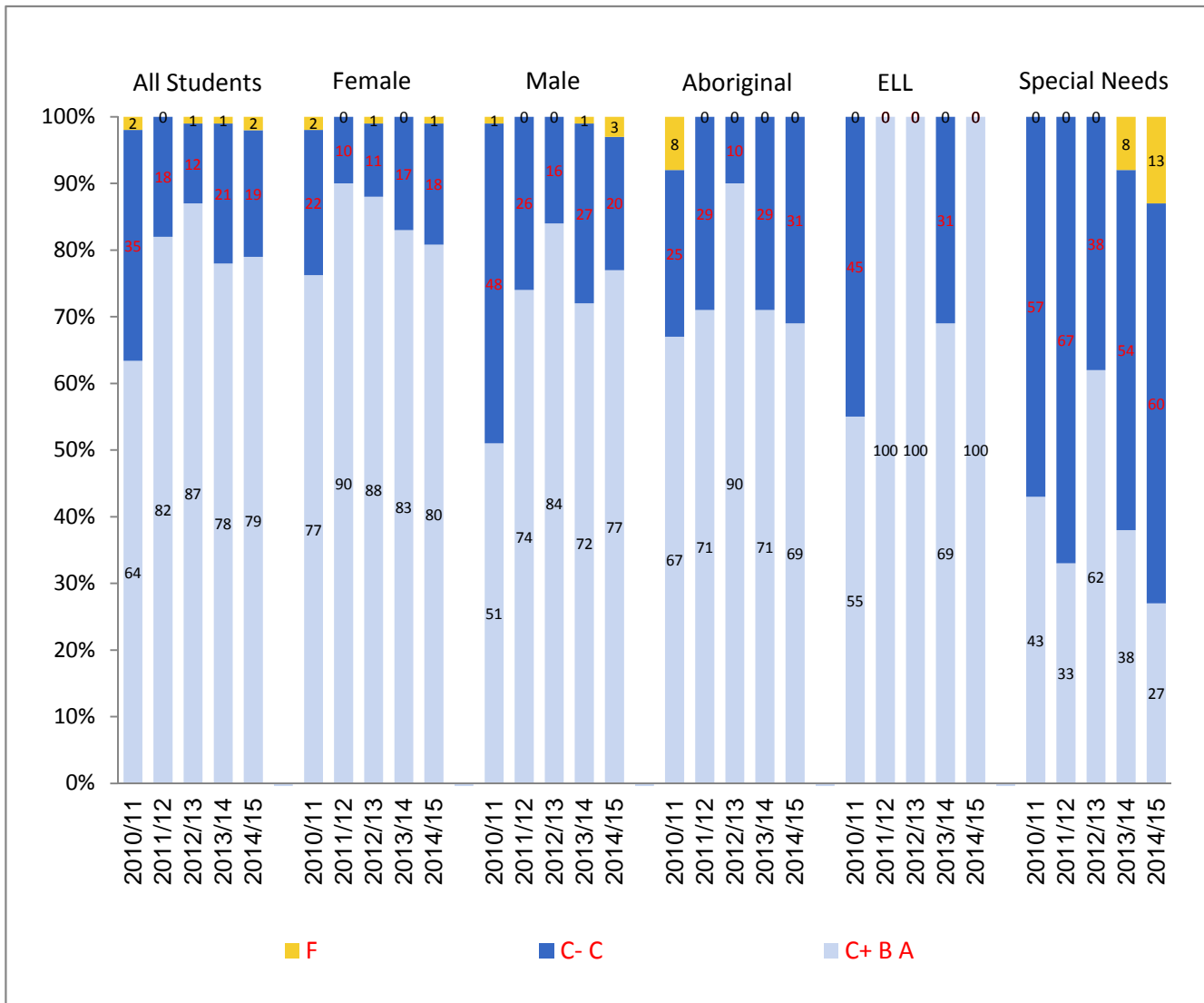
* Data represents only those students present in the school in September and/or February of year indicated

Provincial Required Examinations - 2014/15

Province - Public and Independent Schools Combined

FRANÇAIS LANGUE PREMIÈRE 12 - Blended Final Marks

Distribution of Letter Grades by Subpopulation* - 2010/11 - 2014/15



* Due to rounding totals may not equal 100%

Provincial Required Examinations - 2014/15

Province - Public and Independent Schools Combined

FRANÇAIS LANGUE PREMIÈRE 12 - Blended Final Marks

	School Year	Total Gr 12 Students*	Students Assigned Blended Final Mark	C- (pass) or Better		C+ (good) or Better		
				Province		Province		
				#	%	#	%	
Blended Final Marks	All Students	2010/11	70865	132	130	98	84	64
		2011/12	69897	125	125	100	103	82
		2012/13	68315	146	145	99	127	87
		2013/14	66888	164	163	99	128	78
		2014/15	63248	152	149	98	120	79
Female		2010/11	35534	65	64	98	50	77
		2011/12	34815	68	68	100	61	90
		2012/13	33866	95	94	99	84	88
		2013/14	33050	90	90	100	75	83
		2014/15	31136	82	81	99	66	80
Male		2010/11	35331	67	66	99	34	51
		2011/12	35082	57	57	100	42	74
		2012/13	34449	51	51	100	43	84
		2013/14	33838	74	73	99	53	72
		2014/15	32112	70	68	97	54	77
Aboriginal		2010/11	6742	12	11	92	8	67
		2011/12	6603	14	14	100	10	71
		2012/13	6783	20	20	100	18	90
		2013/14	6819	17	17	100	12	71
		2014/15	6597	16	16	100	11	69
ELL		2010/11	1742	11	11	100	6	55
		2011/12	1703	2	2	100	2	100
		2012/13	1528	4	4	100	4	100
		2013/14	1656	16	16	100	11	69
		2014/15	1482	7	7	100	7	100
Special Needs		2010/11	3775	7	7	100	3	43
		2011/12	3960	3	3	100	1	33
		2012/13	4173	13	13	100	8	62
		2013/14	4525	13	12	92	5	38
		2014/15	4625	15	13	87	4	27

Distribution of Letter Grades

	School Year	F		C-		C		C+		B		A		
		#	%	#	%	#	%	#	%	#	%	#	%	
		Blended Final Marks	All Students	2014/15	3	2	6	4	23	15	28	18	63	41
	Female	2014/15	1	1	3	4	12	15	17	21	28	34	21	26
	Male	2014/15	2	3	3	4	11	16	11	16	35	50	8	11
	Aboriginal	2014/15	0	0	3	19	2	13	1	6	7	44	3	19
	ELL	2014/15	0	0	0	0	0	0	2	29	4	57	1	14
	Special Needs	2014/15	2	13	2	13	7	47	3	20	1	7	0	0

* Data represents only those students present in the school in September and/or February of year indicated

Provincial Required Examinations - 2014/15

Province - Public and Independent Schools Combined

FRANÇAIS LANGUE PREMIÈRE 12 - Exam Marks

Exam Marks	School Year	Total Gr 12 Students*	Students Assigned Exam Mark	C- (pass) or Better		C+ (good) or Better	
				Province		Province	
				#	%	#	%
All Students	2010/11	70865	132	120	91	77	58
	2011/12	69897	125	123	98	102	82
	2012/13	68315	146	143	98	109	75
	2013/14	66888	164	162	99	125	76
	2014/15	63248	152	149	98	109	72
Female	2010/11	35534	65	58	89	43	66
	2011/12	34815	68	67	99	57	84
	2012/13	33866	95	93	98	74	78
	2013/14	33050	90	88	98	70	78
	2014/15	31136	82	81	99	56	68
Male	2010/11	35331	67	62	93	34	51
	2011/12	35082	57	56	98	45	79
	2012/13	34449	51	50	98	35	69
	2013/14	33838	74	74	100	55	74
	2014/15	32112	70	68	97	53	76
Aboriginal	2010/11	6742	12	11	92	7	58
	2011/12	6603	14	13	93	9	64
	2012/13	6783	20	20	100	11	55
	2013/14	6819	17	17	100	9	53
	2014/15	6597	16	16	100	9	56
ELL	2010/11	1742	11	10	91	5	45
	2011/12	1703	2	1	50	1	50
	2012/13	1528	4	4	100	4	100
	2013/14	1656	16	15	94	10	63
	2014/15	1482	7	7	100	5	71
Special Needs	2010/11	3775	7	7	100	3	43
	2011/12	3960	3	2	67	1	33
	2012/13	4173	13	12	92	7	54
	2013/14	4525	13	12	92	3	23
	2014/15	4625	15	12	80	3	20

Distribution of Letter Grades

Exam Marks	School Year	F		C-		C		C+		B		A	
		#	%	#	%	#	%	#	%	#	%	#	%
		All Students	2014/15	3	2	11	7	29	19	23	15	69	45
Female	2014/15	1	1	9	11	16	20	11	13	34	41	11	13
Male	2014/15	2	3	2	3	13	19	12	17	35	50	6	9
Aboriginal	2014/15	0	0	3	19	4	25	3	19	4	25	2	13
ELL	2014/15	0	0	1	14	1	14	0	0	5	71	0	0
Special Needs	2014/15	3	20	2	13	7	47	1	7	2	13	0	0

* Data represents only those students present in the school in September and/or February of year indicated

Provincial Required Examinations - 2014/15

Province - Public and Independent Schools Combined

FRANÇAIS LANGUE PREMIÈRE 12 - Course Marks

Course Marks	All Students	School Year	Total Gr 12 Students*	Students Assigned Course Mark	C- (pass) or Better		C+ (good) or Better	
					Province		Province	
					#	%	#	%
		2010/11	70865	132	129	98	81	61
		2011/12	69897	125	124	99	100	80
		2012/13	68315	146	144	99	131	90
		2013/14	66888	164	158	96	129	79
		2014/15	63248	152	148	97	122	80
	Female	2010/11	35534	65	64	98	49	75
		2011/12	34815	68	68	100	63	93
		2012/13	33866	95	94	99	86	91
		2013/14	33050	90	88	98	75	83
		2014/15	31136	82	80	98	66	80
	Male	2010/11	35331	67	65	97	32	48
		2011/12	35082	57	56	98	37	65
		2012/13	34449	51	50	98	45	88
		2013/14	33838	74	70	95	54	73
		2014/15	32112	70	68	97	56	80
	Aboriginal	2010/11	6742	12	11	92	8	67
		2011/12	6603	14	14	100	10	71
		2012/13	6783	20	20	100	19	95
		2013/14	6819	17	16	94	12	71
		2014/15	6597	16	16	100	11	69
	ELL	2010/11	1742	11	10	91	7	64
		2011/12	1703	2	2	100	2	100
		2012/13	1528	4	4	100	4	100
		2013/14	1656	16	14	88	13	81
		2014/15	1482	7	7	100	7	100
	Special Needs	2010/11	3775	7	7	100	1	14
		2011/12	3960	3	3	100	1	33
		2012/13	4173	13	13	100	9	69
		2013/14	4525	13	12	92	6	46
		2014/15	4625	15	13	87	6	40

Distribution of Letter Grades

Course Marks	All Students	2014/15	F		C-		C		C+		B		A	
			#	%	#	%	#	%	#	%	#	%	#	%
					2014/15	4	3	8	5	18	12	21	14	59
	Female	2014/15	2	2	4	5	10	12	11	13	31	38	24	29
	Male	2014/15	2	3	4	6	8	11	10	14	28	40	18	26
	Aboriginal	2014/15	0	0	2	13	3	19	1	6	4	25	6	38
	ELL	2014/15	0	0	0	0	0	0	0	0	6	86	1	14
	Special Needs	2014/15	2	13	3	20	4	27	4	27	2	13	0	0

* Data represents only those students present in the school in September and/or February of year indicated