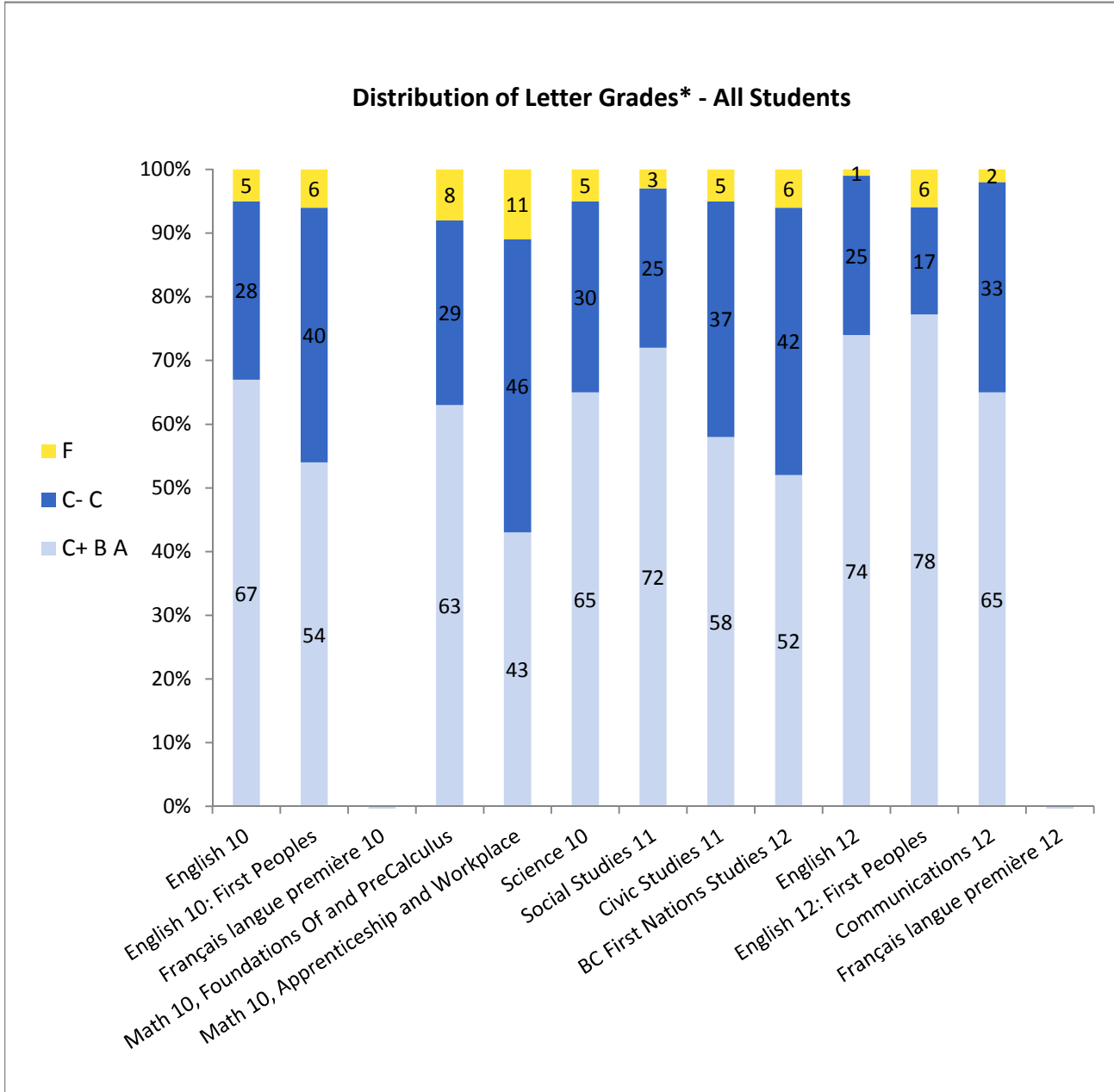


Provincial Required Examinations - 2014/15

036 - Surrey

Blended Final Marks - 2014/15 - Summary for Required Examinations



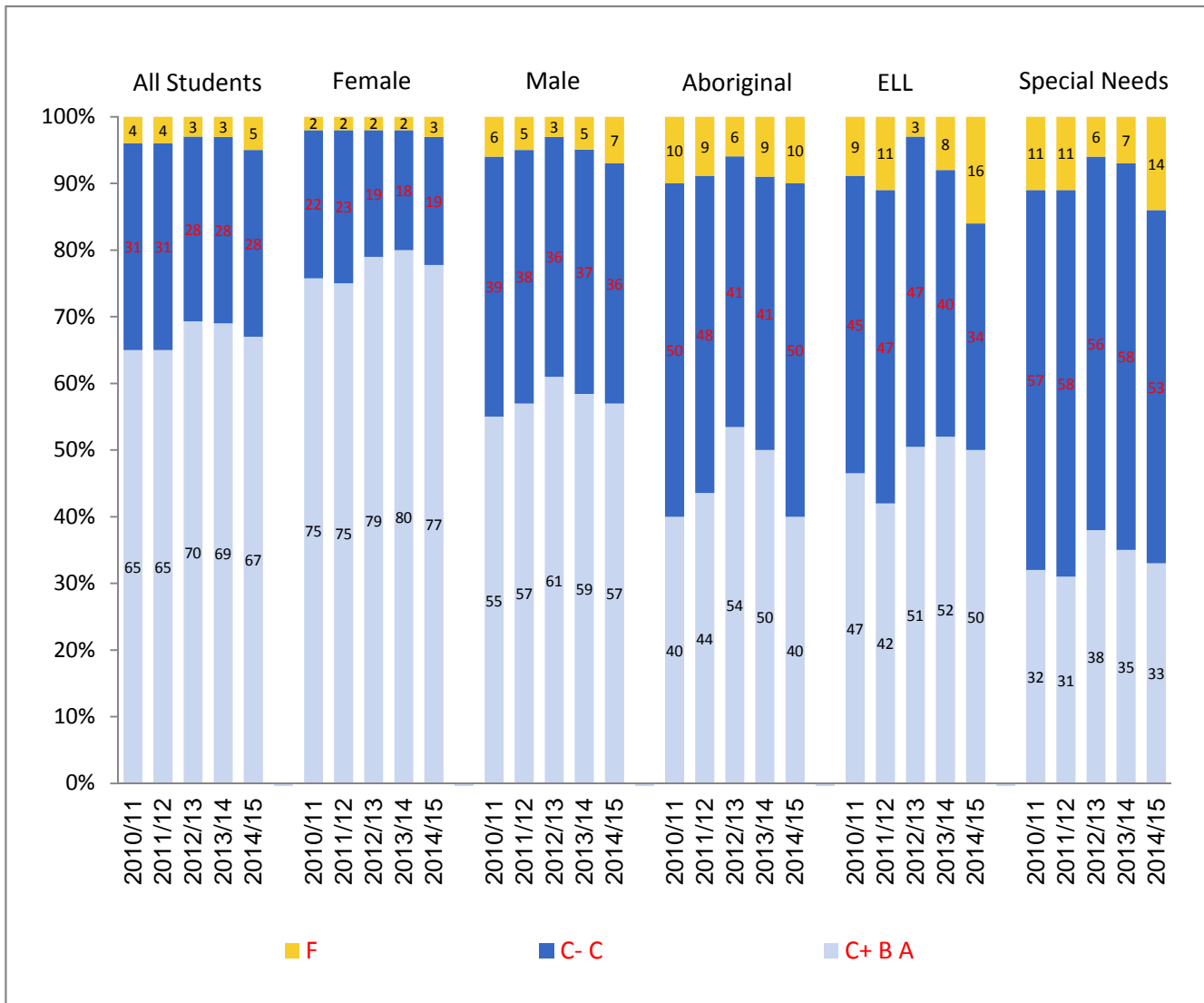
* Due to rounding totals may not equal 100%

Provincial Required Examinations - 2014/15

036 - Surrey

ENGLISH 10 - Blended Final Marks

Distribution of Letter Grades by Subpopulation* - 2010/11 - 2014/15



* Due to rounding totals may not equal 100%

Provincial Required Examinations - 2014/15

036 - Surrey

ENGLISH 10 - Blended Final Marks

	School Year	Total Gr 10 Students*	Students Assigned Blended Final Mark	C- (pass) or Better		C+ (good) or Better		
				District		District		
				#	%	#	%	
Blended Final Marks	All Students	2010/11	7845	5902	5659	96	3838	65
		2011/12	7606	5919	5680	96	3869	65
		2012/13	6296	5726	5580	97	3998	70
		2013/14	6222	5650	5466	97	3904	69
		2014/15	6091	5496	5207	95	3681	67
Female		2010/11	4145	2842	2775	98	2142	75
		2011/12	4013	2838	2768	98	2124	75
		2012/13	3141	2828	2776	98	2238	79
		2013/14	3083	2770	2721	98	2216	80
		2014/15	2966	2659	2575	97	2060	77
Male		2010/11	3700	3060	2884	94	1696	55
		2011/12	3593	3081	2912	95	1745	57
		2012/13	3155	2898	2804	97	1760	61
		2013/14	3139	2880	2745	95	1688	59
		2014/15	3125	2837	2632	93	1621	57
Aboriginal		2010/11	416	299	268	90	119	40
		2011/12	357	242	221	91	106	44
		2012/13	357	227	214	94	122	54
		2013/14	332	228	207	91	113	50
		2014/15	313	193	174	90	78	40
ELL		2010/11	445	484	442	91	226	47
		2011/12	383	419	373	89	178	42
		2012/13	412	447	435	97	226	51
		2013/14	386	403	372	92	209	52
		2014/15	379	438	367	84	218	50
Special Needs		2010/11	478	361	321	89	115	32
		2011/12	497	385	343	89	119	31
		2012/13	501	391	366	94	147	38
		2013/14	512	383	357	93	134	35
		2014/15	525	414	356	86	136	33

Distribution of Letter Grades

	School Year	F		C-		C		C+		B		A		
		#	%	#	%	#	%	#	%	#	%	#	%	
		Blended Final Marks	All Students	2014/15	289	5	729	13	797	15	881	16	1982	36
	Female	2014/15	84	3	215	8	300	11	408	15	1111	42	541	20
	Male	2014/15	205	7	514	18	497	18	473	17	871	31	277	10
	Aboriginal	2014/15	19	10	49	25	47	24	27	14	37	19	14	7
	ELL	2014/15	71	16	84	19	65	15	90	21	106	24	22	5
	Special Needs	2014/15	58	14	123	30	97	23	54	13	72	17	10	2

* Data represents only those students present in the school in September and/or February of year indicated

Provincial Required Examinations - 2014/15

036 - Surrey

ENGLISH 10 - Exam Marks

Exam Marks	All Students	School Year	Total Gr 10 Students*	Students Assigned Exam Mark	C- (pass) or Better		C+ (good) or Better	
					District		District	
					#	%	#	%
		2010/11	7845	5902	5321	90	3526	60
		2011/12	7606	5919	5330	90	3655	62
		2012/13	6296	5726	5353	93	3809	67
		2013/14	6222	5650	5043	89	3387	60
		2014/15	6091	5496	4827	88	2898	53
	Female	2010/11	4145	2842	2664	94	1884	66
		2011/12	4013	2838	2641	93	1933	68
		2012/13	3141	2828	2708	96	2026	72
		2013/14	3083	2770	2562	92	1861	67
		2014/15	2966	2659	2411	91	1570	59
	Male	2010/11	3700	3060	2657	87	1642	54
		2011/12	3593	3081	2689	87	1722	56
		2012/13	3155	2898	2645	91	1783	62
		2013/14	3139	2880	2481	86	1526	53
		2014/15	3125	2837	2416	85	1328	47
	Aboriginal	2010/11	416	299	235	79	126	42
		2011/12	357	242	206	85	124	51
		2012/13	357	227	202	89	126	56
		2013/14	332	228	203	89	129	57
		2014/15	313	193	159	82	67	35
	ELL	2010/11	445	484	352	73	136	28
		2011/12	383	419	278	66	101	24
		2012/13	412	447	337	75	132	30
		2013/14	386	403	263	65	98	24
		2014/15	379	438	287	66	88	20
	Special Needs	2010/11	478	361	274	76	123	34
		2011/12	497	385	287	75	126	33
		2012/13	501	391	328	84	162	41
		2013/14	512	383	298	78	125	33
		2014/15	525	414	301	73	129	31

Distribution of Letter Grades

Exam Marks	All Students	2014/15	F		C-		C		C+		B		A	
			#	%	#	%	#	%	#	%	#	%	#	%
					669	12	599	11	1330	24	1343	24	1056	19
	Female	2014/15	248	9	237	9	604	23	671	25	585	22	314	12
	Male	2014/15	421	15	362	13	726	26	672	24	471	17	185	7
	Aboriginal	2014/15	34	18	26	13	66	34	29	15	28	15	10	5
	ELL	2014/15	151	34	90	21	109	25	48	11	30	7	10	2
	Special Needs	2014/15	113	27	69	17	103	25	78	19	40	10	11	3

* Data represents only those students present in the school in September and/or February of year indicated

Provincial Required Examinations - 2014/15

036 - Surrey

ENGLISH 10 - Course Marks

Course Marks	All Students	School Year	Total Gr 10 Students*	Students Assigned Course Mark	C- (pass) or Better		C+ (good) or Better	
					District		District	
					#	%	#	%
		2010/11	7845	5902	5648	96	3942	67
		2011/12	7606	5919	5672	96	3974	67
		2012/13	6296	5726	5551	97	4062	71
		2013/14	6222	5650	5460	97	4074	72
		2014/15	6091	5496	5236	95	3849	70
	Female	2010/11	4145	2842	2769	97	2191	77
		2011/12	4013	2838	2762	97	2156	76
		2012/13	3141	2828	2762	98	2264	80
		2013/14	3083	2770	2715	98	2282	82
		2014/15	2966	2659	2585	97	2128	80
	Male	2010/11	3700	3060	2879	94	1751	57
		2011/12	3593	3081	2910	94	1818	59
		2012/13	3155	2898	2789	96	1798	62
		2013/14	3139	2880	2745	95	1792	62
		2014/15	3125	2837	2651	93	1721	61
	Aboriginal	2010/11	416	299	266	89	129	43
		2011/12	357	242	222	92	106	44
		2012/13	357	227	209	92	125	55
		2013/14	332	228	205	90	119	52
		2014/15	313	193	178	92	88	46
	ELL	2010/11	445	484	445	92	249	51
		2011/12	383	419	382	91	213	51
		2012/13	412	447	437	98	258	58
		2013/14	386	403	371	92	249	62
		2014/15	379	438	384	88	248	57
	Special Needs	2010/11	478	361	320	89	137	38
		2011/12	497	385	342	89	140	36
		2012/13	501	391	364	93	159	41
		2013/14	512	383	354	92	159	42
		2014/15	525	414	361	87	152	37

Distribution of Letter Grades

Course Marks	All Students	2014/15	F		C-		C		C+		B		A	
			#	%	#	%	#	%	#	%	#	%	#	%
					2014/15	260	5	662	12	725	13	749	14	1851
	Female	2014/15	74	3	179	7	278	10	320	12	991	37	817	31
	Male	2014/15	186	7	483	17	447	16	429	15	860	30	432	15
	Aboriginal	2014/15	15	8	48	25	42	22	29	15	43	22	16	8
	ELL	2014/15	54	12	77	18	59	13	69	16	130	30	49	11
	Special Needs	2014/15	53	13	110	27	99	24	52	13	83	20	17	4

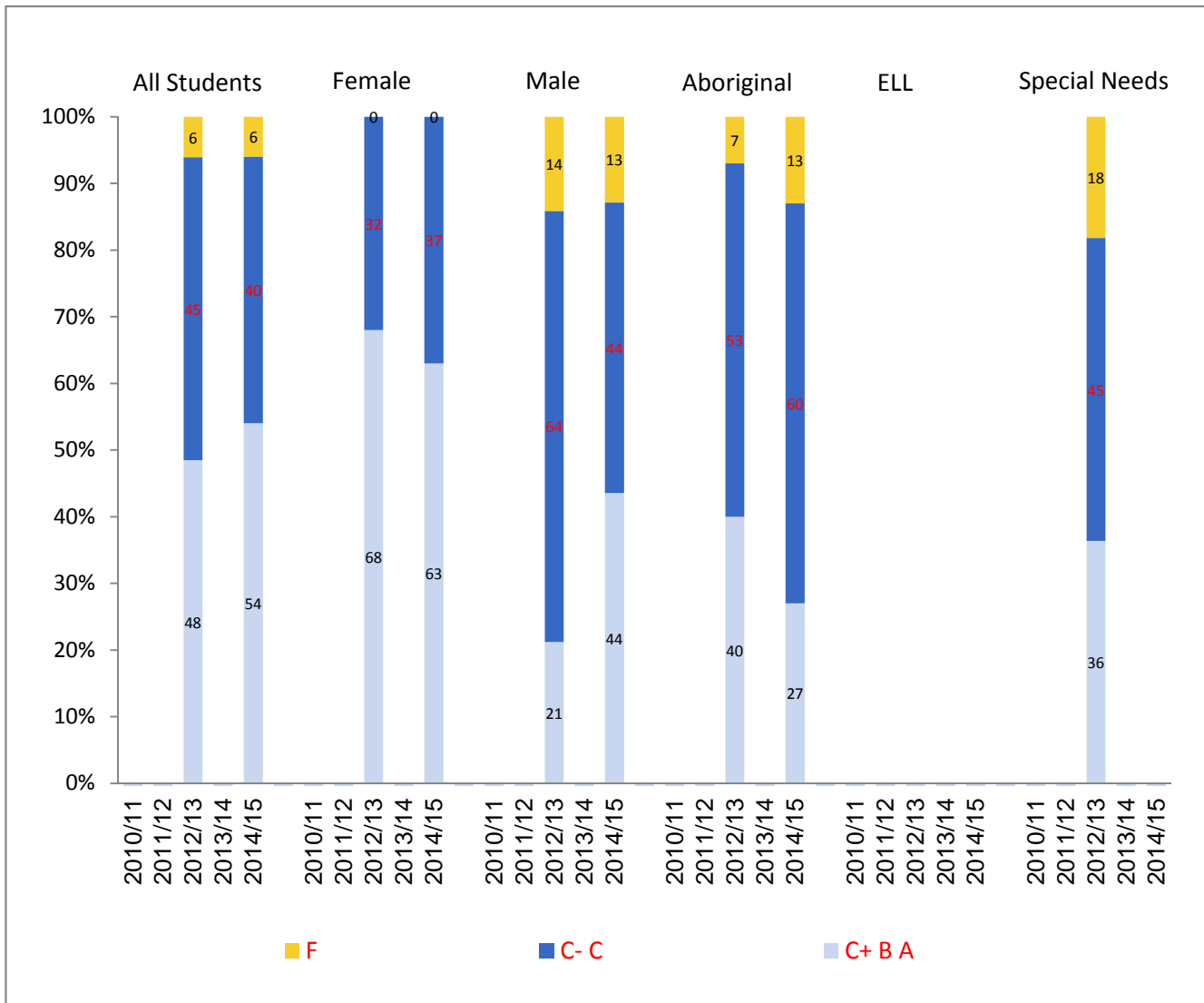
* Data represents only those students present in the school in September and/or February of year indicated

Provincial Required Examinations - 2014/15

036 - Surrey

ENGLISH 10: FIRST PEOPLES - Blended Final Marks

Distribution of Letter Grades by Subpopulation* - 2010/11 - 2014/15



* Due to rounding totals may not equal 100%

Provincial Required Examinations - 2014/15

036 - Surrey

ENGLISH 10: FIRST PEOPLES - Blended Final Marks

	School Year	Total Gr 10 Students*	Students Assigned Blended Final Mark #	C- (pass) or Better		C+ (good) or Better		
				District		District		
				#	%	#	%	
Blended Final Marks	All Students	2010/11	7845	-	-	-	-	
		2011/12	7606	-	-	-	-	
		2012/13	6296	33	31	94	16	48
		2013/14	6222	-	-	-	-	
		2014/15	6091	35	33	94	19	54
Female		2010/11	4145	-	-	-	-	
		2011/12	4013	-	-	-	-	
		2012/13	3141	19	19	100	13	68
		2013/14	3083	-	-	-	-	
		2014/15	2966	19	19	100	12	63
Male		2010/11	3700	-	-	-	-	
		2011/12	3593	-	-	-	-	
		2012/13	3155	14	12	86	3	21
		2013/14	3139	-	-	-	-	
		2014/15	3125	16	14	88	7	44
Aboriginal		2010/11	416	-	-	-	-	
		2011/12	357	-	-	-	-	
		2012/13	357	15	14	93	6	40
		2013/14	332	-	-	-	-	
		2014/15	313	15	13	87	4	27
ELL		2010/11	445	-	-	-	-	
		2011/12	383	-	-	-	-	
		2012/13	412	Msk	Msk	Msk	Msk	Msk
		2013/14	386	-	-	-	-	
		2014/15	379	Msk	Msk	Msk	Msk	Msk
Special Needs		2010/11	478	-	-	-	-	
		2011/12	497	-	-	-	-	
		2012/13	501	11	9	82	4	36
		2013/14	512	-	-	-	-	
		2014/15	525	Msk	Msk	Msk	Msk	Msk

Distribution of Letter Grades

	School Year	F		C-		C		C+		B		A		
		#	%	#	%	#	%	#	%	#	%	#	%	
		Blended Final Marks	All Students	2014/15	2	6	8	23	6	17	7	20	11	31
	Female	2014/15	0	0	2	11	5	26	5	26	7	37	0	0
	Male	2014/15	2	13	6	38	1	6	2	13	4	25	1	6
	Aboriginal	2014/15	2	13	5	33	4	27	0	0	4	27	0	0
	ELL	2014/15	Msk	Msk	Msk	Msk	Msk	Msk	Msk	Msk	Msk	Msk	Msk	Msk
	Special Needs	2014/15	Msk	Msk	Msk	Msk	Msk	Msk	Msk	Msk	Msk	Msk	Msk	Msk

* Data represents only those students present in the school in September and/or February of year indicated

Provincial Required Examinations - 2014/15

036 - Surrey

ENGLISH 10: FIRST PEOPLES - Exam Marks

Exam Marks	School Year	Total Gr 10 Students*	Students Assigned Exam Mark	C- (pass) or Better		C+ (good) or Better	
				District		District	
				#	%	#	%
All Students	2010/11	7845	-	-	-	-	-
	2011/12	7606	-	-	-	-	-
	2012/13	6296	33	32	97	24	73
	2013/14	6222	-	-	-	-	-
	2014/15	6091	35	31	89	19	54
Female	2010/11	4145	-	-	-	-	-
	2011/12	4013	-	-	-	-	-
	2012/13	3141	19	18	95	16	84
	2013/14	3083	-	-	-	-	-
	2014/15	2966	19	18	95	12	63
Male	2010/11	3700	-	-	-	-	-
	2011/12	3593	-	-	-	-	-
	2012/13	3155	14	14	100	8	57
	2013/14	3139	-	-	-	-	-
	2014/15	3125	16	13	81	7	44
Aboriginal	2010/11	416	-	-	-	-	-
	2011/12	357	-	-	-	-	-
	2012/13	357	15	14	93	9	60
	2013/14	332	-	-	-	-	-
	2014/15	313	15	11	73	6	40
ELL	2010/11	445	-	-	-	-	-
	2011/12	383	-	-	-	-	-
	2012/13	412	Msk	Msk	Msk	Msk	Msk
	2013/14	386	-	-	-	-	-
	2014/15	379	Msk	Msk	Msk	Msk	Msk
Special Needs	2010/11	478	-	-	-	-	-
	2011/12	497	-	-	-	-	-
	2012/13	501	11	10	91	7	64
	2013/14	512	-	-	-	-	-
	2014/15	525	Msk	Msk	Msk	Msk	Msk

Distribution of Letter Grades

Exam Marks	School Year	F		C-		C		C+		B		A	
		#	%	#	%	#	%	#	%	#	%	#	%
		All Students	2014/15	4	11	6	17	6	17	8	23	10	29
Female	2014/15	1	5	2	11	4	21	4	21	7	37	1	5
Male	2014/15	3	19	4	25	2	13	4	25	3	19	0	0
Aboriginal	2014/15	4	27	4	27	1	7	2	13	3	20	1	7
ELL	2014/15	Msk	Msk	Msk	Msk	Msk	Msk	Msk	Msk	Msk	Msk	Msk	Msk
Special Needs	2014/15	Msk	Msk	Msk	Msk	Msk	Msk	Msk	Msk	Msk	Msk	Msk	Msk

* Data represents only those students present in the school in September and/or February of year indicated

Provincial Required Examinations - 2014/15

036 - Surrey

ENGLISH 10: FIRST PEOPLES - Course Marks

Course Marks	All Students	School Year	Total Gr 10 Students*	Students Assigned Course Mark	C- (pass) or Better		C+ (good) or Better	
					District		District	
					#	%	#	%
		2010/11	7845	-	-	-	-	
		2011/12	7606	-	-	-	-	
		2012/13	6296	33	31	94	15	45
		2013/14	6222	-	-	-	-	
		2014/15	6091	35	35	100	18	51
	Female	2010/11	4145	-	-	-	-	
		2011/12	4013	-	-	-	-	
		2012/13	3141	19	19	100	14	74
		2013/14	3083	-	-	-	-	
		2014/15	2966	19	19	100	12	63
	Male	2010/11	3700	-	-	-	-	
		2011/12	3593	-	-	-	-	
		2012/13	3155	14	12	86	1	7
		2013/14	3139	-	-	-	-	
		2014/15	3125	16	16	100	6	38
	Aboriginal	2010/11	416	-	-	-	-	
		2011/12	357	-	-	-	-	
		2012/13	357	15	14	93	7	47
		2013/14	332	-	-	-	-	
		2014/15	313	15	15	100	4	27
	ELL	2010/11	445	-	-	-	-	
		2011/12	383	-	-	-	-	
		2012/13	412	Msk	Msk	Msk	Msk	Msk
		2013/14	386	-	-	-	-	
		2014/15	379	Msk	Msk	Msk	Msk	Msk
	Special Needs	2010/11	478	-	-	-	-	
		2011/12	497	-	-	-	-	
		2012/13	501	11	9	82	5	45
		2013/14	512	-	-	-	-	
		2014/15	525	Msk	Msk	Msk	Msk	Msk

Distribution of Letter Grades

Course Marks	All Students	2014/15	F		C-		C		C+		B		A	
			#	%	#	%	#	%	#	%	#	%	#	%
					0	0	9	26	8	23	5	14	10	29
	Female	2014/15	0	0	2	11	5	26	5	26	5	26	2	11
	Male	2014/15	0	0	7	44	3	19	0	0	5	31	1	6
	Aboriginal	2014/15	0	0	6	40	5	33	0	0	4	27	0	0
	ELL	2014/15	Msk	Msk	Msk	Msk	Msk	Msk	Msk	Msk	Msk	Msk	Msk	Msk
	Special Needs	2014/15	Msk	Msk	Msk	Msk	Msk	Msk	Msk	Msk	Msk	Msk	Msk	Msk

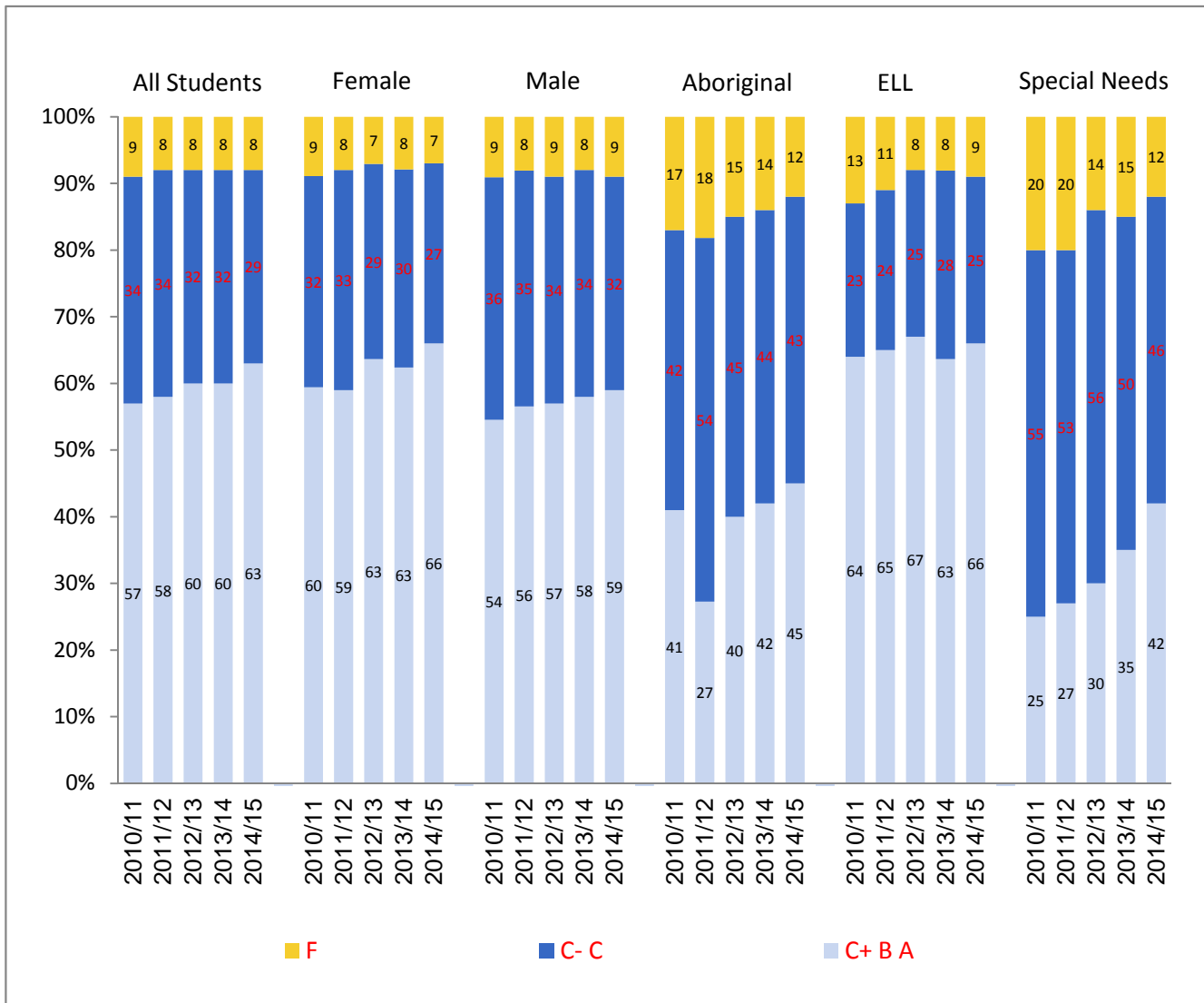
* Data represents only those students present in the school in September and/or February of year indicated

Provincial Required Examinations - 2014/15

036 - Surrey

MATHEMATICS 10, FOUNDATIONS OF AND PRECALCULUS - Blended Final Marks

Distribution of Letter Grades by Subpopulation* - 2010/11 - 2014/15



* Due to rounding totals may not equal 100%

Provincial Required Examinations - 2014/15

036 - Surrey

MATHEMATICS 10, FOUNDATIONS OF AND PRECALCULUS - Blended Final Marks

	School Year	Total Gr 10 Students*	Students Assigned Blended Final Mark	C- (pass) or Better		C+ (good) or Better		
				District		District		
				#	%	#	%	
Blended Final Marks	All Students	2010/11	7845	4590	4181	91	2618	57
		2011/12	7606	4941	4537	92	2858	58
		2012/13	6296	4879	4492	92	2946	60
		2013/14	6222	5015	4627	92	3031	60
		2014/15	6091	4505	4140	92	2822	63
	Female	2010/11	4145	2281	2086	91	1365	60
		2011/12	4013	2472	2270	92	1466	59
		2012/13	3141	2519	2335	93	1596	63
		2013/14	3083	2555	2363	92	1605	63
		2014/15	2966	2253	2090	93	1491	66
	Male	2010/11	3700	2309	2095	91	1253	54
		2011/12	3593	2469	2267	92	1392	56
		2012/13	3155	2360	2157	91	1350	57
		2013/14	3139	2460	2264	92	1426	58
		2014/15	3125	2252	2050	91	1331	59
	Aboriginal	2010/11	416	113	94	83	46	41
		2011/12	357	114	93	82	31	27
		2012/13	357	137	116	85	55	40
		2013/14	332	119	102	86	50	42
		2014/15	313	92	81	88	41	45
ELL	2010/11	445	328	285	87	209	64	
	2011/12	383	348	308	89	226	65	
	2012/13	412	339	312	92	226	67	
	2013/14	386	311	285	92	197	63	
	2014/15	379	304	276	91	201	66	
Special Needs	2010/11	478	125	100	80	31	25	
	2011/12	497	167	133	80	45	27	
	2012/13	501	188	162	86	57	30	
	2013/14	512	181	153	85	63	35	
	2014/15	525	149	131	88	62	42	

		Distribution of Letter Grades												
		F		C-		C		C+		B		A		
		#	%	#	%	#	%	#	%	#	%	#	%	
Blended Final Marks	All Students	2014/15	365	8	736	16	582	13	487	11	1134	25	1201	27
	Female	2014/15	163	7	334	15	265	12	239	11	594	26	658	29
	Male	2014/15	202	9	402	18	317	14	248	11	540	24	543	24
	Aboriginal	2014/15	11	12	24	26	16	17	17	18	14	15	10	11
	ELL	2014/15	28	9	40	13	35	12	27	9	81	27	93	31
	Special Needs	2014/15	18	12	38	26	31	21	29	19	18	12	15	10

* Data represents only those students present in the school in September and/or February of year indicated

Provincial Required Examinations - 2014/15

036 - Surrey

MATHEMATICS 10, FOUNDATIONS OF AND PRECALCULUS - Exam Marks

Exam Marks	School Year	Total Gr 10 Students*	Students Assigned Exam Mark	C- (pass) or Better		C+ (good) or Better	
				District		District	
				#	%	#	%
All Students	2010/11	7845	4590	3757	82	2444	53
	2011/12	7606	4941	3996	81	2695	55
	2012/13	6296	4879	3988	82	2743	56
	2013/14	6222	5015	4172	83	2951	59
	2014/15	6091	4505	3817	85	2644	59
Female	2010/11	4145	2281	1860	82	1235	54
	2011/12	4013	2472	1974	80	1338	54
	2012/13	3141	2519	2076	82	1455	58
	2013/14	3083	2555	2122	83	1512	59
	2014/15	2966	2253	1913	85	1360	60
Male	2010/11	3700	2309	1897	82	1209	52
	2011/12	3593	2469	2022	82	1357	55
	2012/13	3155	2360	1912	81	1288	55
	2013/14	3139	2460	2050	83	1439	58
	2014/15	3125	2252	1904	85	1284	57
Aboriginal	2010/11	416	113	76	67	43	38
	2011/12	357	114	77	68	36	32
	2012/13	357	137	98	72	51	37
	2013/14	332	119	81	68	44	37
	2014/15	313	92	70	76	31	34
ELL	2010/11	445	328	255	78	189	58
	2011/12	383	348	279	80	211	61
	2012/13	412	339	279	82	215	63
	2013/14	386	311	255	82	203	65
	2014/15	379	304	254	84	197	65
Special Needs	2010/11	478	125	81	65	31	25
	2011/12	497	167	106	63	43	26
	2012/13	501	188	125	66	62	33
	2013/14	512	181	129	71	70	39
	2014/15	525	149	109	73	52	35

Distribution of Letter Grades

Exam Marks	School Year	F		C-		C		C+		B		A	
		#	%	#	%	#	%	#	%	#	%	#	%
		All Students	2014/15	688	15	694	15	479	11	526	12	1019	23
Female	2014/15	340	15	312	14	241	11	257	11	528	23	575	26
Male	2014/15	348	15	382	17	238	11	269	12	491	22	524	23
Aboriginal	2014/15	22	24	26	28	13	14	12	13	12	13	7	8
ELL	2014/15	50	16	36	12	21	7	28	9	69	23	100	33
Special Needs	2014/15	40	27	38	26	19	13	14	9	23	15	15	10

* Data represents only those students present in the school in September and/or February of year indicated

Provincial Required Examinations - 2014/15

036 - Surrey

MATHEMATICS 10, FOUNDATIONS OF AND PRECALCULUS - Course Marks

Course Marks	All Students	School Year	Total Gr 10 Students*	Students Assigned Course Mark	C- (pass) or Better		C+ (good) or Better	
					District		District	
					#	%	#	%
		2010/11	7845	4590	4211	92	2713	59
		2011/12	7606	4941	4562	92	2960	60
		2012/13	6296	4879	4541	93	3037	62
		2013/14	6222	5015	4651	93	3111	62
		2014/15	6091	4505	4186	93	2918	65
	Female	2010/11	4145	2281	2106	92	1420	62
		2011/12	4013	2472	2290	93	1531	62
		2012/13	3141	2519	2369	94	1651	66
		2013/14	3083	2555	2382	93	1649	65
		2014/15	2966	2253	2118	94	1548	69
	Male	2010/11	3700	2309	2105	91	1293	56
		2011/12	3593	2469	2272	92	1429	58
		2012/13	3155	2360	2172	92	1386	59
		2013/14	3139	2460	2269	92	1462	59
		2014/15	3125	2252	2068	92	1370	61
	Aboriginal	2010/11	416	113	95	84	52	46
		2011/12	357	114	93	82	35	31
		2012/13	357	137	116	85	57	42
		2013/14	332	119	102	86	54	45
		2014/15	313	92	81	88	42	46
	ELL	2010/11	445	328	290	88	216	66
		2011/12	383	348	307	88	231	66
		2012/13	412	339	311	92	230	68
		2013/14	386	311	289	93	201	65
		2014/15	379	304	283	93	206	68
	Special Needs	2010/11	478	125	103	82	32	26
		2011/12	497	167	133	80	48	29
		2012/13	501	188	165	88	61	32
		2013/14	512	181	154	85	67	37
		2014/15	525	149	131	88	69	46

Distribution of Letter Grades

Course Marks	All Students	2014/15	F		C-		C		C+		B		A	
			#	%	#	%	#	%	#	%	#	%	#	%
					319	7	688	15	580	13	463	10	1113	25
	Female	2014/15	135	6	308	14	262	12	231	10	586	26	731	32
	Male	2014/15	184	8	380	17	318	14	232	10	527	23	611	27
	Aboriginal	2014/15	11	12	17	18	22	24	9	10	23	25	10	11
	ELL	2014/15	21	7	46	15	31	10	27	9	75	25	104	34
	Special Needs	2014/15	18	12	37	25	25	17	29	19	25	17	15	10

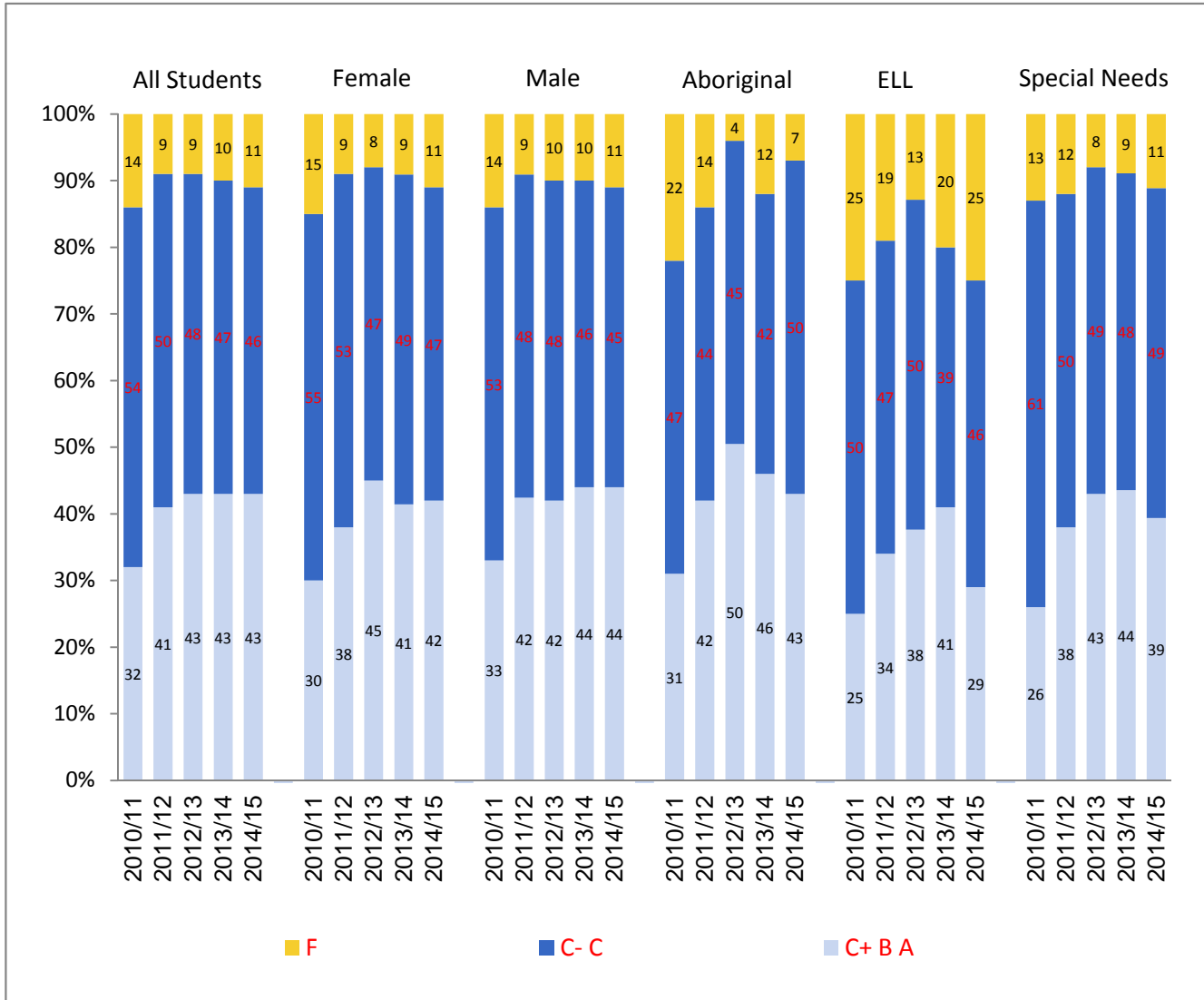
* Data represents only those students present in the school in September and/or February of year indicated

Provincial Required Examinations - 2014/15

036 - Surrey

MATHEMATICS 10, APPRENTICESHIP AND WORKPLACE - Blended Final Marks

Distribution of Letter Grades by Subpopulation* - 2010/11 - 2014/15



* Due to rounding totals may not equal 100%

Provincial Required Examinations - 2014/15

036 - Surrey

MATHEMATICS 10, APPRENTICESHIP AND WORKPLACE - Blended Final Marks

	School Year	Total Gr 10 Students*	Students Assigned Blended Final Mark	C- (pass) or Better		C+ (good) or Better		
				District		District		
				#	%	#	%	
Blended Final Marks	All Students	2010/11	7845	1012	868	86	326	32
		2011/12	7606	1175	1065	91	477	41
		2012/13	6296	1047	954	91	452	43
		2013/14	6222	1159	1045	90	496	43
		2014/15	6091	1226	1094	89	529	43
Female		2010/11	4145	400	339	85	121	30
		2011/12	4013	477	432	91	181	38
		2012/13	3141	436	402	92	196	45
		2013/14	3083	444	402	91	183	41
		2014/15	2966	482	429	89	202	42
Male		2010/11	3700	612	529	86	205	33
		2011/12	3593	698	633	91	296	42
		2012/13	3155	611	552	90	256	42
		2013/14	3139	715	643	90	313	44
		2014/15	3125	744	665	89	327	44
Aboriginal		2010/11	416	122	95	78	38	31
		2011/12	357	140	121	86	59	42
		2012/13	357	115	110	96	58	50
		2013/14	332	128	113	88	59	46
		2014/15	313	119	111	93	51	43
ELL		2010/11	445	76	57	75	19	25
		2011/12	383	62	50	81	21	34
		2012/13	412	104	91	88	39	38
		2013/14	386	123	99	80	51	41
		2014/15	379	110	83	75	32	29
Special Needs		2010/11	478	181	158	87	47	26
		2011/12	497	241	213	88	92	38
		2012/13	501	215	197	92	92	43
		2013/14	512	267	244	91	117	44
		2014/15	525	299	265	89	117	39

Distribution of Letter Grades

	School Year	F		C-		C		C+		B		A		
		#	%	#	%	#	%	#	%	#	%	#	%	
		Blended Final Marks	All Students	2014/15	132	11	315	26	250	20	183	15	285	23
	Female	2014/15	53	11	118	24	109	23	83	17	92	19	27	6
	Male	2014/15	79	11	197	26	141	19	100	13	193	26	34	5
	Aboriginal	2014/15	8	7	31	26	29	24	16	13	28	24	7	6
	ELL	2014/15	27	25	26	24	25	23	10	9	18	16	4	4
	Special Needs	2014/15	34	11	86	29	62	21	43	14	66	22	8	3

* Data represents only those students present in the school in September and/or February of year indicated

Provincial Required Examinations - 2014/15

036 - Surrey

MATHEMATICS 10, APPRENTICESHIP AND WORKPLACE - Exam Marks

Exam Marks	All Students	School Year	Total Gr 10 Students*	Students Assigned Exam Mark	C- (pass) or Better		C+ (good) or Better	
					District		District	
					#	%	#	%
		2010/11	7845	1012	701	69	147	15
		2011/12	7606	1175	809	69	148	13
		2012/13	6296	1047	696	66	151	14
		2013/14	6222	1159	748	65	150	13
		2014/15	6091	1226	823	67	191	16
	Female	2010/11	4145	400	253	63	47	12
		2011/12	4013	477	301	63	43	9
		2012/13	3141	436	269	62	44	10
		2013/14	3083	444	272	61	46	10
		2014/15	2966	482	305	63	59	12
	Male	2010/11	3700	612	448	73	100	16
		2011/12	3593	698	508	73	105	15
		2012/13	3155	611	427	70	107	18
		2013/14	3139	715	476	67	104	15
		2014/15	3125	744	518	70	132	18
	Aboriginal	2010/11	416	122	84	69	18	15
		2011/12	357	140	93	66	21	15
		2012/13	357	115	87	76	15	13
		2013/14	332	128	89	70	19	15
		2014/15	313	119	83	70	21	18
	ELL	2010/11	445	76	40	53	6	8
		2011/12	383	62	32	52	6	10
		2012/13	412	104	47	45	10	10
		2013/14	386	123	51	41	10	8
		2014/15	379	110	55	50	9	8
	Special Needs	2010/11	478	181	118	65	26	14
		2011/12	497	241	155	64	28	12
		2012/13	501	215	142	66	28	13
		2013/14	512	267	180	67	40	15
		2014/15	525	299	197	66	36	12

Exam Marks	All Students	School Year	Distribution of Letter Grades											
			F		C-		C		C+		B		A	
			#	%	#	%	#	%	#	%	#	%	#	%
		2014/15	403	33	401	33	231	19	106	9	70	6	15	1
	Female	2014/15	177	37	174	36	72	15	36	7	18	4	5	1
	Male	2014/15	226	30	227	31	159	21	70	9	52	7	10	1
	Aboriginal	2014/15	36	30	39	33	23	19	11	9	9	8	1	1
	ELL	2014/15	55	50	30	27	16	15	2	2	7	6	0	0
	Special Needs	2014/15	102	34	94	31	67	22	24	8	9	3	3	1

* Data represents only those students present in the school in September and/or February of year indicated

Provincial Required Examinations - 2014/15

036 - Surrey

MATHEMATICS 10, APPRENTICESHIP AND WORKPLACE - Course Marks

Course Marks	All Students	School Year	Total Gr 10 Students*	Students Assigned Course Mark	C- (pass) or Better		C+ (good) or Better	
					District		District	
					#	%	#	%
		2010/11	7845	1012	871	86	401	40
		2011/12	7606	1175	1077	92	587	50
		2012/13	6296	1047	972	93	536	51
		2013/14	6222	1159	1072	92	611	53
		2014/15	6091	1226	1117	91	636	52
	Female	2010/11	4145	400	343	86	160	40
		2011/12	4013	477	441	92	236	49
		2012/13	3141	436	411	94	238	55
		2013/14	3083	444	412	93	229	52
		2014/15	2966	482	436	90	246	51
	Male	2010/11	3700	612	528	86	241	39
		2011/12	3593	698	636	91	351	50
		2012/13	3155	611	561	92	298	49
		2013/14	3139	715	660	92	382	53
		2014/15	3125	744	681	92	390	52
	Aboriginal	2010/11	416	122	97	80	45	37
		2011/12	357	140	123	88	67	48
		2012/13	357	115	109	95	66	57
		2013/14	332	128	117	91	76	59
		2014/15	313	119	112	94	62	52
	ELL	2010/11	445	76	59	78	24	32
		2011/12	383	62	50	81	29	47
		2012/13	412	104	94	90	54	52
		2013/14	386	123	108	88	61	50
		2014/15	379	110	90	82	48	44
	Special Needs	2010/11	478	181	158	87	64	35
		2011/12	497	241	217	90	117	49
		2012/13	501	215	199	93	108	50
		2013/14	512	267	247	93	143	54
		2014/15	525	299	268	90	133	44

Distribution of Letter Grades

Course Marks	All Students	2014/15	F		C-		C		C+		B		A	
			#	%	#	%	#	%	#	%	#	%	#	%
					2014/15	109	9	259	21	222	18	171	14	319
	Female	2014/15	46	10	90	19	100	21	70	15	119	25	57	12
	Male	2014/15	63	8	169	23	122	16	101	14	200	27	89	12
	Aboriginal	2014/15	7	6	29	24	21	18	17	14	27	23	18	15
	ELL	2014/15	20	18	24	22	18	16	19	17	21	19	8	7
	Special Needs	2014/15	31	10	67	22	68	23	32	11	69	23	32	11

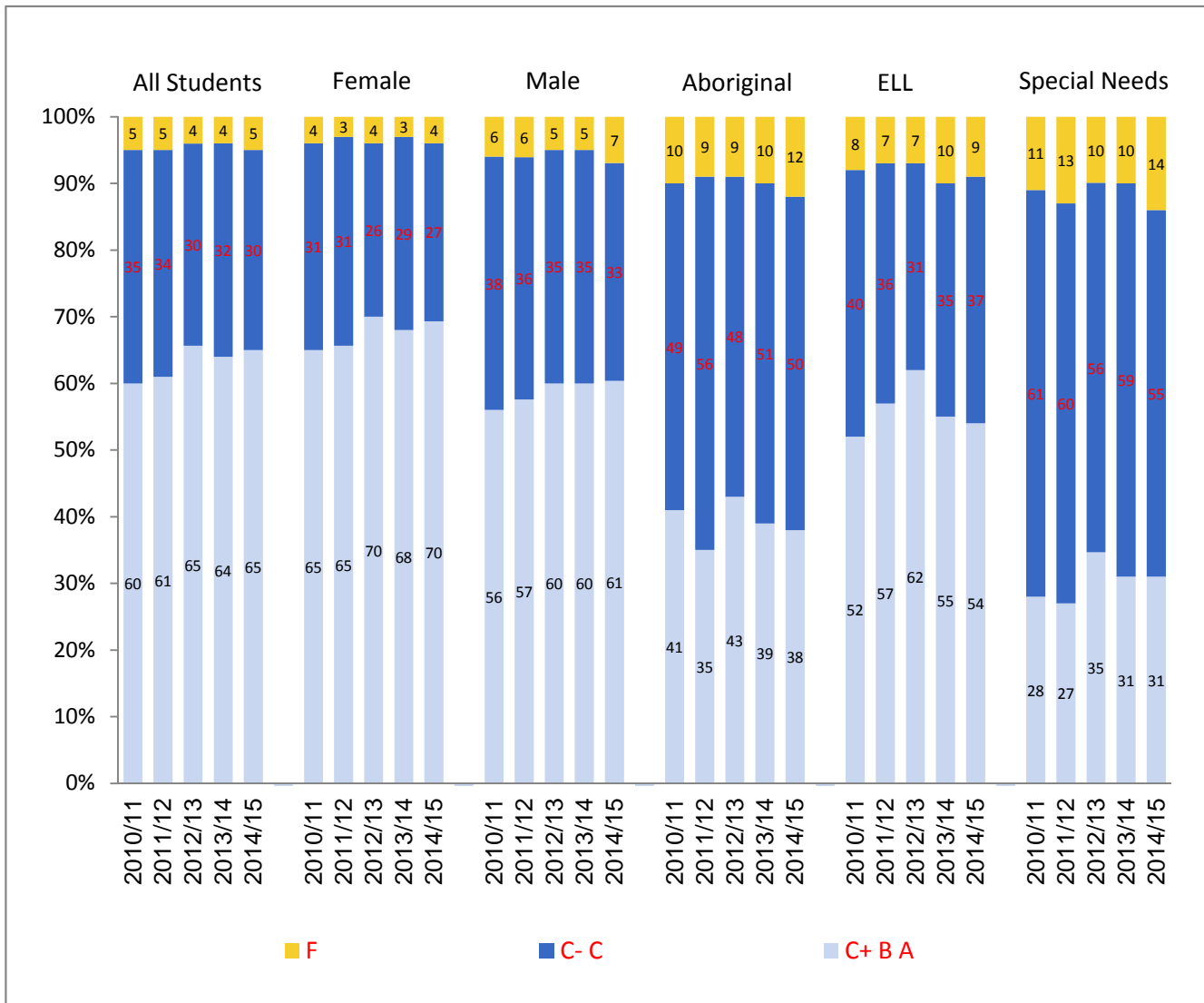
* Data represents only those students present in the school in September and/or February of year indicated

Provincial Required Examinations - 2014/15

036 - Surrey

SCIENCE 10 - Blended Final Marks

Distribution of Letter Grades by Subpopulation* - 2010/11 - 2014/15



* Due to rounding totals may not equal 100%

Provincial Required Examinations - 2014/15

036 - Surrey

SCIENCE 10 - Blended Final Marks

	School Year	Total Gr 10 Students*	Students Assigned Blended Final Mark	C- (pass) or Better		C+ (good) or Better		
				District		District		
				#	%	#	%	
Blended Final Marks	All Students	2010/11	7845	5843	5563	95	3533	60
		2011/12	7606	5655	5380	95	3468	61
		2012/13	6296	5568	5320	96	3624	65
		2013/14	6222	5640	5408	96	3611	64
		2014/15	6091	5473	5182	95	3556	65
	Female	2010/11	4145	2832	2725	96	1834	65
		2011/12	4013	2715	2620	97	1778	65
		2012/13	3141	2752	2655	96	1931	70
		2013/14	3083	2781	2688	97	1884	68
		2014/15	2966	2644	2539	96	1838	70
	Male	2010/11	3700	3011	2838	94	1699	56
		2011/12	3593	2940	2760	94	1690	57
		2012/13	3155	2816	2665	95	1693	60
		2013/14	3139	2859	2720	95	1727	60
		2014/15	3125	2829	2643	93	1718	61
	Aboriginal	2010/11	416	269	241	90	109	41
		2011/12	357	221	202	91	78	35
		2012/13	357	210	191	91	90	43
		2013/14	332	214	193	90	84	39
		2014/15	313	202	178	88	77	38
ELL	2010/11	445	451	415	92	235	52	
	2011/12	383	348	323	93	198	57	
	2012/13	412	408	379	93	252	62	
	2013/14	386	364	326	90	200	55	
	2014/15	379	399	365	91	217	54	
Special Needs	2010/11	478	341	302	89	94	28	
	2011/12	497	358	313	87	98	27	
	2012/13	501	362	326	90	125	35	
	2013/14	512	404	363	90	126	31	
	2014/15	525	411	352	86	128	31	

Distribution of Letter Grades

	School Year	F		C-		C		C+		B		A		
		#	%	#	%	#	%	#	%	#	%	#	%	
		Blended Final Marks	All Students	2014/15	291	5	834	15	792	14	733	13	1637	30
	Female	2014/15	105	4	344	13	357	14	336	13	861	33	641	24
	Male	2014/15	186	7	490	17	435	15	397	14	776	27	545	19
	Aboriginal	2014/15	24	12	61	30	40	20	30	15	40	20	7	3
	ELL	2014/15	34	9	83	21	65	16	50	13	105	26	62	16
	Special Needs	2014/15	59	14	137	33	87	21	62	15	48	12	18	4

* Data represents only those students present in the school in September and/or February of year indicated

Provincial Required Examinations - 2014/15

036 - Surrey

SCIENCE 10 - Exam Marks

Exam Marks	All Students	School Year	Total Gr 10 Students*	Students Assigned Exam Mark	C- (pass) or Better		C+ (good) or Better	
					District		District	
					#	%	#	%
		2010/11	7845	5843	5283	90	3136	54
		2011/12	7606	5655	5116	90	3144	56
		2012/13	6296	5568	5065	91	3394	61
		2013/14	6222	5640	5098	90	3146	56
		2014/15	6091	5473	4947	90	3193	58
	Female	2010/11	4145	2832	2570	91	1502	53
		2011/12	4013	2715	2470	91	1545	57
		2012/13	3141	2752	2514	91	1710	62
		2013/14	3083	2781	2509	90	1592	57
		2014/15	2966	2644	2394	91	1569	59
	Male	2010/11	3700	3011	2713	90	1634	54
		2011/12	3593	2940	2646	90	1599	54
		2012/13	3155	2816	2551	91	1684	60
		2013/14	3139	2859	2589	91	1554	54
		2014/15	3125	2829	2553	90	1624	57
	Aboriginal	2010/11	416	269	228	85	86	32
		2011/12	357	221	190	86	68	31
		2012/13	357	210	174	83	77	37
		2013/14	332	214	175	82	73	34
		2014/15	313	202	161	80	63	31
	ELL	2010/11	445	451	381	84	198	44
		2011/12	383	348	295	85	178	51
		2012/13	412	408	342	84	215	53
		2013/14	386	364	298	82	171	47
		2014/15	379	399	322	81	190	48
	Special Needs	2010/11	478	341	266	78	77	23
		2011/12	497	358	277	77	79	22
		2012/13	501	362	283	78	115	32
		2013/14	512	404	316	78	101	25
		2014/15	525	411	315	77	99	24

Distribution of Letter Grades

Exam Marks	All Students	School Year	F		C-		C		C+		B		A	
			#	%	#	%	#	%	#	%	#	%	#	%
				2014/15	526	10	694	13	1060	19	1303	24	1109	20
	Female	2014/15	250	9	318	12	507	19	620	23	576	22	373	14
	Male	2014/15	276	10	376	13	553	20	683	24	533	19	408	14
	Aboriginal	2014/15	41	20	46	23	52	26	40	20	18	9	5	2
	ELL	2014/15	77	19	59	15	73	18	80	20	60	15	50	13
	Special Needs	2014/15	96	23	106	26	110	27	60	15	29	7	10	2

* Data represents only those students present in the school in September and/or February of year indicated

Provincial Required Examinations - 2014/15

036 - Surrey

SCIENCE 10 - Course Marks

Course Marks	All Students	School Year	Total Gr 10 Students*	Students Assigned Course Mark	C- (pass) or Better		C+ (good) or Better	
					District		District	
					#	%	#	%
		2010/11	7845	5843	5527	95	3639	62
		2011/12	7606	5655	5362	95	3579	63
		2012/13	6296	5568	5306	95	3725	67
		2013/14	6222	5640	5387	96	3727	66
		2014/15	6091	5473	5189	95	3669	67
	Female	2010/11	4145	2832	2720	96	1902	67
		2011/12	4013	2715	2618	96	1831	67
		2012/13	3141	2752	2649	96	1991	72
		2013/14	3083	2781	2683	96	1944	70
		2014/15	2966	2644	2543	96	1912	72
	Male	2010/11	3700	3011	2807	93	1737	58
		2011/12	3593	2940	2744	93	1748	59
		2012/13	3155	2816	2657	94	1734	62
		2013/14	3139	2859	2704	95	1783	62
		2014/15	3125	2829	2646	94	1757	62
	Aboriginal	2010/11	416	269	234	87	114	42
		2011/12	357	221	200	90	84	38
		2012/13	357	210	191	91	90	43
		2013/14	332	214	190	89	92	43
		2014/15	313	202	174	86	88	44
	ELL	2010/11	445	451	415	92	243	54
		2011/12	383	348	325	93	211	61
		2012/13	412	408	382	94	262	64
		2013/14	386	364	328	90	212	58
		2014/15	379	399	370	93	232	58
	Special Needs	2010/11	478	341	294	86	107	31
		2011/12	497	358	307	86	109	30
		2012/13	501	362	323	89	138	38
		2013/14	512	404	355	88	145	36
		2014/15	525	411	353	86	141	34

Distribution of Letter Grades

Course Marks	All Students	2014/15	F		C-		C		C+		B		A	
			#	%	#	%	#	%	#	%	#	%	#	%
					2014/15	284	5	790	14	730	13	637	12	1562
	Female	2014/15	101	4	314	12	317	12	295	11	796	30	821	31
	Male	2014/15	183	6	476	17	413	15	342	12	766	27	649	23
	Aboriginal	2014/15	28	14	55	27	31	15	28	14	48	24	12	6
	ELL	2014/15	29	7	80	20	58	15	46	12	113	28	73	18
	Special Needs	2014/15	58	14	121	29	91	22	55	13	64	16	22	5

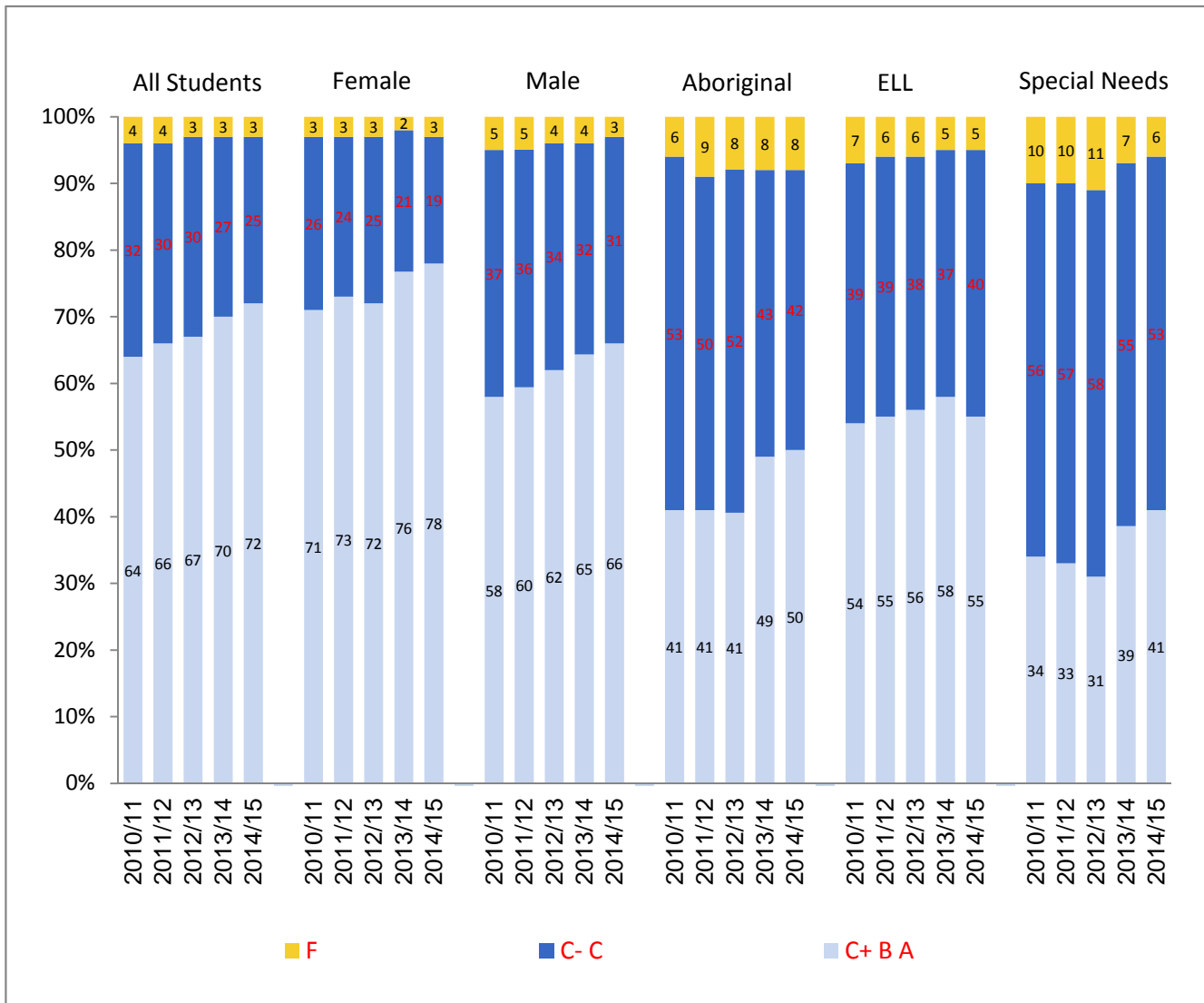
* Data represents only those students present in the school in September and/or February of year indicated

Provincial Required Examinations - 2014/15

036 - Surrey

SOCIAL STUDIES 11 - Blended Final Marks

Distribution of Letter Grades by Subpopulation* - 2010/11 - 2014/15



* Due to rounding totals may not equal 100%

Provincial Required Examinations - 2014/15

036 - Surrey

SOCIAL STUDIES 11 - Blended Final Marks

	School Year	Total Gr 11 Students*	Students Assigned Blended Final Mark	C- (pass) or Better		C+ (good) or Better		
				District		District		
				#	%	#	%	
Blended Final Marks	All Students	2010/11	6579	5322	5118	96	3424	64
		2011/12	6528	5550	5334	96	3661	66
		2012/13	6578	5478	5289	97	3661	67
		2013/14	6285	5305	5146	97	3736	70
		2014/15	6340	5078	4933	97	3671	72
Female		2010/11	3167	2555	2482	97	1808	71
		2011/12	3167	2695	2615	97	1957	73
		2012/13	3231	2681	2606	97	1923	72
		2013/14	3067	2636	2575	98	2012	76
		2014/15	3076	2520	2456	97	1976	78
Male		2010/11	3412	2767	2636	95	1616	58
		2011/12	3361	2855	2719	95	1704	60
		2012/13	3347	2797	2683	96	1738	62
		2013/14	3218	2669	2571	96	1724	65
		2014/15	3264	2558	2477	97	1695	66
Aboriginal		2010/11	338	198	186	94	81	41
		2011/12	371	193	175	91	79	41
		2012/13	326	197	182	92	80	41
		2013/14	317	168	155	92	82	49
		2014/15	317	161	148	92	81	50
ELL		2010/11	468	379	354	93	205	54
		2011/12	456	327	308	94	180	55
		2012/13	410	349	328	94	197	56
		2013/14	438	338	320	95	195	58
		2014/15	383	252	240	95	138	55
Special Needs		2010/11	399	247	223	90	84	34
		2011/12	421	261	236	90	86	33
		2012/13	429	279	249	89	87	31
		2013/14	459	321	299	93	124	39
		2014/15	506	297	280	94	123	41

Distribution of Letter Grades

	School Year	F		C-		C		C+		B		A		
		#	%	#	%	#	%	#	%	#	%	#	%	
		Blended Final Marks	All Students	2014/15	145	3	594	12	668	13	682	13	1600	32
	Female	2014/15	64	3	223	9	257	10	292	12	827	33	857	34
	Male	2014/15	81	3	371	15	411	16	390	15	773	30	532	21
	Aboriginal	2014/15	13	8	39	24	28	17	25	16	37	23	19	12
	ELL	2014/15	12	5	50	20	52	21	33	13	76	30	29	12
	Special Needs	2014/15	17	6	94	32	63	21	40	13	69	23	14	5

* Data represents only those students present in the school in September and/or February of year indicated

Provincial Required Examinations - 2014/15

036 - Surrey

SOCIAL STUDIES 11 - Exam Marks

Exam Marks	All Students	School Year	Total Gr 11 Students*	Students Assigned Exam Mark	C- (pass) or Better		C+ (good) or Better	
					District		District	
					#	%	#	%
		2010/11	6579	5322	4778	90	2869	54
		2011/12	6528	5550	5084	92	3199	58
		2012/13	6578	5478	5089	93	3249	59
		2013/14	6285	5305	4875	92	3225	61
		2014/15	6340	5078	4851	96	3400	67
	Female	2010/11	3167	2555	2270	89	1356	53
		2011/12	3167	2695	2462	91	1581	59
		2012/13	3231	2681	2503	93	1582	59
		2013/14	3067	2636	2440	93	1604	61
		2014/15	3076	2520	2426	96	1718	68
	Male	2010/11	3412	2767	2508	91	1513	55
		2011/12	3361	2855	2622	92	1618	57
		2012/13	3347	2797	2586	92	1667	60
		2013/14	3218	2669	2435	91	1621	61
		2014/15	3264	2558	2425	95	1682	66
	Aboriginal	2010/11	338	198	175	88	88	44
		2011/12	371	193	171	89	79	41
		2012/13	326	197	171	87	78	40
		2013/14	317	168	152	90	75	45
		2014/15	317	161	154	96	86	53
	ELL	2010/11	468	379	304	80	141	37
		2011/12	456	327	271	83	121	37
		2012/13	410	349	298	85	151	43
		2013/14	438	338	276	82	142	42
		2014/15	383	252	213	85	109	43
	Special Needs	2010/11	399	247	198	80	75	30
		2011/12	421	261	221	85	88	34
		2012/13	429	279	236	85	83	30
		2013/14	459	321	272	85	123	38
		2014/15	506	297	269	91	139	47

Distribution of Letter Grades

Exam Marks	All Students	School Year	F		C-		C		C+		B		A	
			#	%	#	%	#	%	#	%	#	%	#	%
				2014/15	227	4	474	9	977	19	1193	23	1146	23
	Female	2014/15	94	4	236	9	472	19	543	22	604	24	571	23
	Male	2014/15	133	5	238	9	505	20	650	25	542	21	490	19
	Aboriginal	2014/15	7	4	25	16	43	27	42	26	21	13	23	14
	ELL	2014/15	39	15	46	18	58	23	48	19	37	15	24	10
	Special Needs	2014/15	28	9	57	19	73	25	79	27	42	14	18	6

* Data represents only those students present in the school in September and/or February of year indicated

Provincial Required Examinations - 2014/15

036 - Surrey

SOCIAL STUDIES 11 - Course Marks

Course Marks	All Students	School Year	Total Gr 11 Students*	Students Assigned Course Mark	C- (pass) or Better		C+ (good) or Better	
					District		District	
					#	%	#	%
		2010/11	6579	5322	5127	96	3552	67
		2011/12	6528	5550	5321	96	3748	68
		2012/13	6578	5478	5282	96	3766	69
		2013/14	6285	5305	5123	97	3845	72
		2014/15	6340	5078	4931	97	3743	74
	Female	2010/11	3167	2555	2489	97	1895	74
		2011/12	3167	2695	2616	97	1998	74
		2012/13	3231	2681	2606	97	1987	74
		2013/14	3067	2636	2572	98	2073	79
		2014/15	3076	2520	2457	98	2015	80
	Male	2010/11	3412	2767	2638	95	1657	60
		2011/12	3361	2855	2705	95	1750	61
		2012/13	3347	2797	2676	96	1779	64
		2013/14	3218	2669	2551	96	1772	66
		2014/15	3264	2558	2474	97	1728	68
	Aboriginal	2010/11	338	198	180	91	83	42
		2011/12	371	193	172	89	81	42
		2012/13	326	197	180	91	81	41
		2013/14	317	168	152	90	85	51
		2014/15	317	161	145	90	80	50
	ELL	2010/11	468	379	358	94	223	59
		2011/12	456	327	308	94	197	60
		2012/13	410	349	330	95	212	61
		2013/14	438	338	316	93	213	63
		2014/15	383	252	244	97	147	58
	Special Needs	2010/11	399	247	226	91	90	36
		2011/12	421	261	236	90	92	35
		2012/13	429	279	248	89	94	34
		2013/14	459	321	293	91	140	44
		2014/15	506	297	276	93	135	45

Distribution of Letter Grades

Course Marks	All Students	2014/15	F		C-		C		C+		B		A	
			#	%	#	%	#	%	#	%	#	%	#	%
					147	3	597	12	591	12	583	11	1464	29
	Female	2014/15	63	3	211	8	231	9	248	10	707	28	1060	42
	Male	2014/15	84	3	386	15	360	14	335	13	757	30	636	25
	Aboriginal	2014/15	16	10	40	25	25	16	16	10	41	25	23	14
	ELL	2014/15	8	3	45	18	52	21	29	12	70	28	48	19
	Special Needs	2014/15	21	7	91	31	50	17	43	14	71	24	21	7

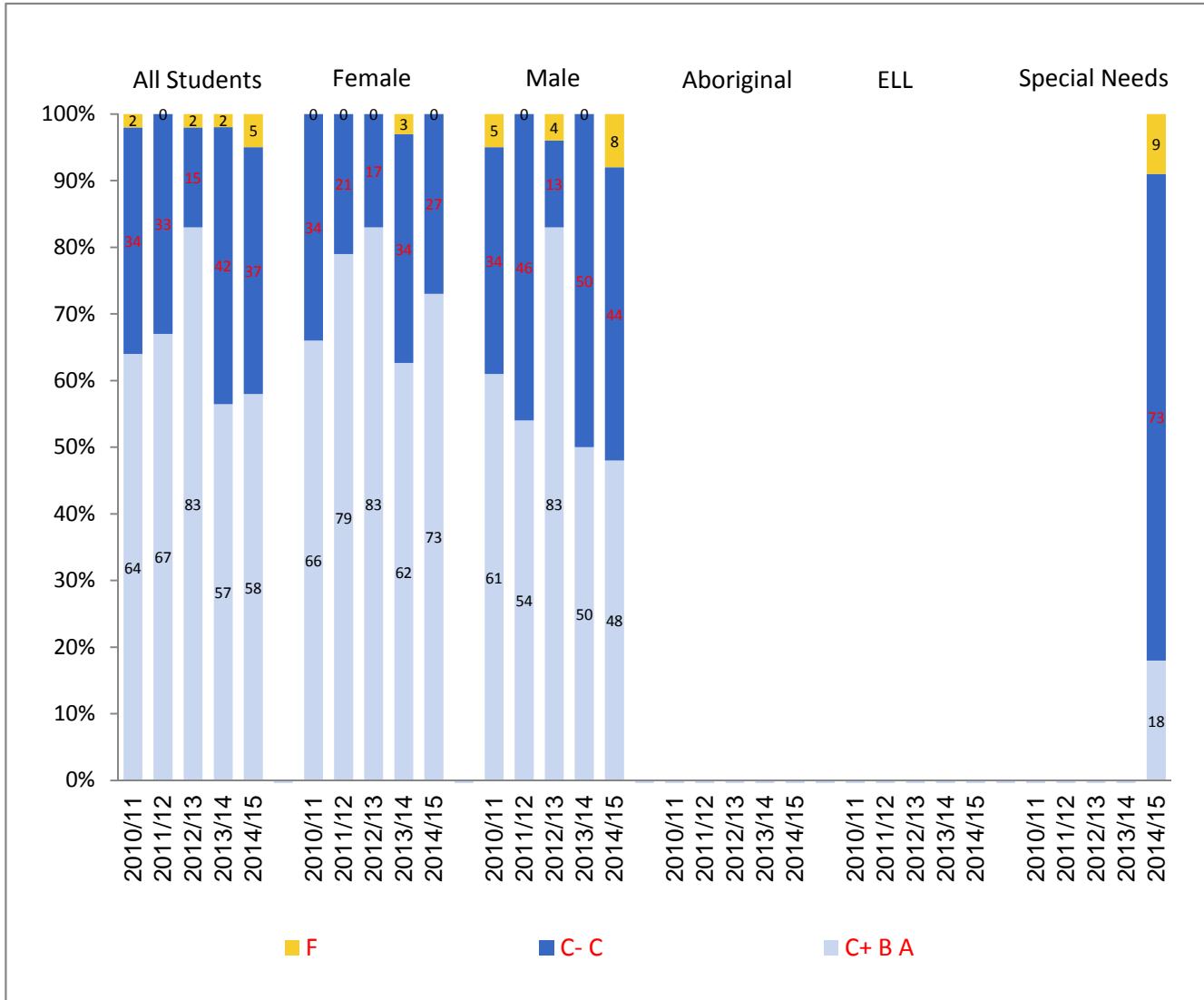
* Data represents only those students present in the school in September and/or February of year indicated

Provincial Required Examinations - 2014/15

036 - Surrey

CIVIC STUDIES 11 - Blended Final Marks

Distribution of Letter Grades by Subpopulation* - 2010/11 - 2014/15



* Due to rounding totals may not equal 100%

Provincial Required Examinations - 2014/15

036 - Surrey

CIVIC STUDIES 11 - Blended Final Marks

	School Year	Total Gr 11 Students*	Students Assigned Blended Final Mark	C- (pass) or Better		C+ (good) or Better		
				District		District		
				#	%	#	%	
Blended Final Marks	All Students	2010/11	6579	88	86	98	56	64
		2011/12	6528	27	27	100	18	67
		2012/13	6578	53	52	98	44	83
		2013/14	6285	53	52	98	30	57
		2014/15	6340	181	172	95	105	58
Female		2010/11	3167	44	44	100	29	66
		2011/12	3167	14	14	100	11	79
		2012/13	3231	29	29	100	24	83
		2013/14	3067	29	28	97	18	62
		2014/15	3076	71	71	100	52	73
Male		2010/11	3412	44	42	95	27	61
		2011/12	3361	13	13	100	7	54
		2012/13	3347	24	23	96	20	83
		2013/14	3218	24	24	100	12	50
		2014/15	3264	110	101	92	53	48
Aboriginal		2010/11	338	Msk	Msk	Msk	Msk	Msk
		2011/12	371	Msk	Msk	Msk	Msk	Msk
		2012/13	326	Msk	Msk	Msk	Msk	Msk
		2013/14	317	Msk	Msk	Msk	Msk	Msk
		2014/15	317	Msk	Msk	Msk	Msk	Msk
ELL		2010/11	468	Msk	Msk	Msk	Msk	Msk
		2011/12	456	-	-	-	-	-
		2012/13	410	-	-	-	-	-
		2013/14	438	Msk	Msk	Msk	Msk	Msk
		2014/15	383	Msk	Msk	Msk	Msk	Msk
Special Needs		2010/11	399	Msk	Msk	Msk	Msk	Msk
		2011/12	421	Msk	Msk	Msk	Msk	Msk
		2012/13	429	Msk	Msk	Msk	Msk	Msk
		2013/14	459	Msk	Msk	Msk	Msk	Msk
		2014/15	506	11	10	91	2	18

Distribution of Letter Grades

	School Year	F		C-		C		C+		B		A		
		#	%	#	%	#	%	#	%	#	%	#	%	
		Blended Final Marks	All Students	2014/15	9	5	24	13	43	24	27	15	32	18
	Female	2014/15	0	0	5	7	14	20	11	15	13	18	28	39
	Male	2014/15	9	8	19	17	29	26	16	15	19	17	18	16
	Aboriginal	2014/15	Msk	Msk	Msk	Msk	Msk	Msk	Msk	Msk	Msk	Msk	Msk	Msk
	ELL	2014/15	Msk	Msk	Msk	Msk	Msk	Msk	Msk	Msk	Msk	Msk	Msk	Msk
	Special Needs	2014/15	1	9	4	36	4	36	0	0	1	9	1	9

* Data represents only those students present in the school in September and/or February of year indicated

Provincial Required Examinations - 2014/15

036 - Surrey

CIVIC STUDIES 11 - Exam Marks

Exam Marks	All Students	School Year	Total Gr 11 Students*	Students Assigned Exam Mark	C- (pass) or Better		C+ (good) or Better	
					District		District	
					#	%	#	%
		2010/11	6579	88	81	92	31	35
		2011/12	6528	27	27	100	11	41
		2012/13	6578	53	49	92	24	45
		2013/14	6285	53	52	98	25	47
		2014/15	6340	181	180	99	104	57
	Female	2010/11	3167	44	40	91	10	23
		2011/12	3167	14	14	100	5	36
		2012/13	3231	29	26	90	9	31
		2013/14	3067	29	28	97	14	48
		2014/15	3076	71	71	100	42	59
	Male	2010/11	3412	44	41	93	21	48
		2011/12	3361	13	13	100	6	46
		2012/13	3347	24	23	96	15	63
		2013/14	3218	24	24	100	11	46
		2014/15	3264	110	109	99	62	56
	Aboriginal	2010/11	338	Msk	Msk	Msk	Msk	Msk
		2011/12	371	Msk	Msk	Msk	Msk	Msk
		2012/13	326	Msk	Msk	Msk	Msk	Msk
		2013/14	317	Msk	Msk	Msk	Msk	Msk
		2014/15	317	Msk	Msk	Msk	Msk	Msk
	ELL	2010/11	468	Msk	Msk	Msk	Msk	Msk
		2011/12	456	-	-	-	-	-
		2012/13	410	-	-	-	-	-
		2013/14	438	Msk	Msk	Msk	Msk	Msk
		2014/15	383	Msk	Msk	Msk	Msk	Msk
	Special Needs	2010/11	399	Msk	Msk	Msk	Msk	Msk
		2011/12	421	Msk	Msk	Msk	Msk	Msk
		2012/13	429	Msk	Msk	Msk	Msk	Msk
		2013/14	459	Msk	Msk	Msk	Msk	Msk
		2014/15	506	11	11	100	3	27

Distribution of Letter Grades

Exam Marks	All Students	School Year	F		C-		C		C+		B		A	
			#	%	#	%	#	%	#	%	#	%	#	%
				2014/15	1	1	24	13	52	29	44	24	37	20
	Female	2014/15	0	0	9	13	20	28	15	21	16	23	11	15
	Male	2014/15	1	1	15	14	32	29	29	26	21	19	12	11
	Aboriginal	2014/15	Msk	Msk	Msk	Msk	Msk	Msk	Msk	Msk	Msk	Msk	Msk	Msk
	ELL	2014/15	Msk	Msk	Msk	Msk	Msk	Msk	Msk	Msk	Msk	Msk	Msk	Msk
	Special Needs	2014/15	0	0	2	18	6	55	1	9	2	18	0	0

* Data represents only those students present in the school in September and/or February of year indicated

Provincial Required Examinations - 2014/15

036 - Surrey

CIVIC STUDIES 11 - Course Marks

Course Marks	All Students	School Year	Total Gr 11 Students*	Students Assigned Course Mark	C- (pass) or Better		C+ (good) or Better	
					District		District	
					#	%	#	%
		2010/11	6579	88	87	99	61	69
		2011/12	6528	27	27	100	19	70
		2012/13	6578	53	52	98	46	87
		2013/14	6285	53	52	98	33	62
		2014/15	6340	181	172	95	105	58
	Female	2010/11	3167	44	44	100	33	75
		2011/12	3167	14	14	100	11	79
		2012/13	3231	29	29	100	25	86
		2013/14	3067	29	29	100	19	66
		2014/15	3076	71	71	100	54	76
	Male	2010/11	3412	44	43	98	28	64
		2011/12	3361	13	13	100	8	62
		2012/13	3347	24	23	96	21	88
		2013/14	3218	24	23	96	14	58
		2014/15	3264	110	101	92	51	46
	Aboriginal	2010/11	338	Msk	Msk	Msk	Msk	Msk
		2011/12	371	Msk	Msk	Msk	Msk	Msk
		2012/13	326	Msk	Msk	Msk	Msk	Msk
		2013/14	317	Msk	Msk	Msk	Msk	Msk
		2014/15	317	Msk	Msk	Msk	Msk	Msk
	ELL	2010/11	468	Msk	Msk	Msk	Msk	Msk
		2011/12	456	-	-	-	-	-
		2012/13	410	-	-	-	-	-
		2013/14	438	Msk	Msk	Msk	Msk	Msk
		2014/15	383	Msk	Msk	Msk	Msk	Msk
	Special Needs	2010/11	399	Msk	Msk	Msk	Msk	Msk
		2011/12	421	Msk	Msk	Msk	Msk	Msk
		2012/13	429	Msk	Msk	Msk	Msk	Msk
		2013/14	459	Msk	Msk	Msk	Msk	Msk
		2014/15	506	11	10	91	2	18

Distribution of Letter Grades

Course Marks	All Students	School Year	F		C-		C		C+		B		A	
			#	%	#	%	#	%	#	%	#	%	#	%
				2014/15	9	5	30	17	37	20	21	12	28	15
	Female	2014/15	0	0	7	10	10	14	10	14	11	15	33	46
	Male	2014/15	9	8	23	21	27	25	11	10	17	15	23	21
	Aboriginal	2014/15	Msk	Msk	Msk	Msk	Msk	Msk	Msk	Msk	Msk	Msk	Msk	Msk
	ELL	2014/15	Msk	Msk	Msk	Msk	Msk	Msk	Msk	Msk	Msk	Msk	Msk	Msk
	Special Needs	2014/15	1	9	5	45	3	27	0	0	1	9	1	9

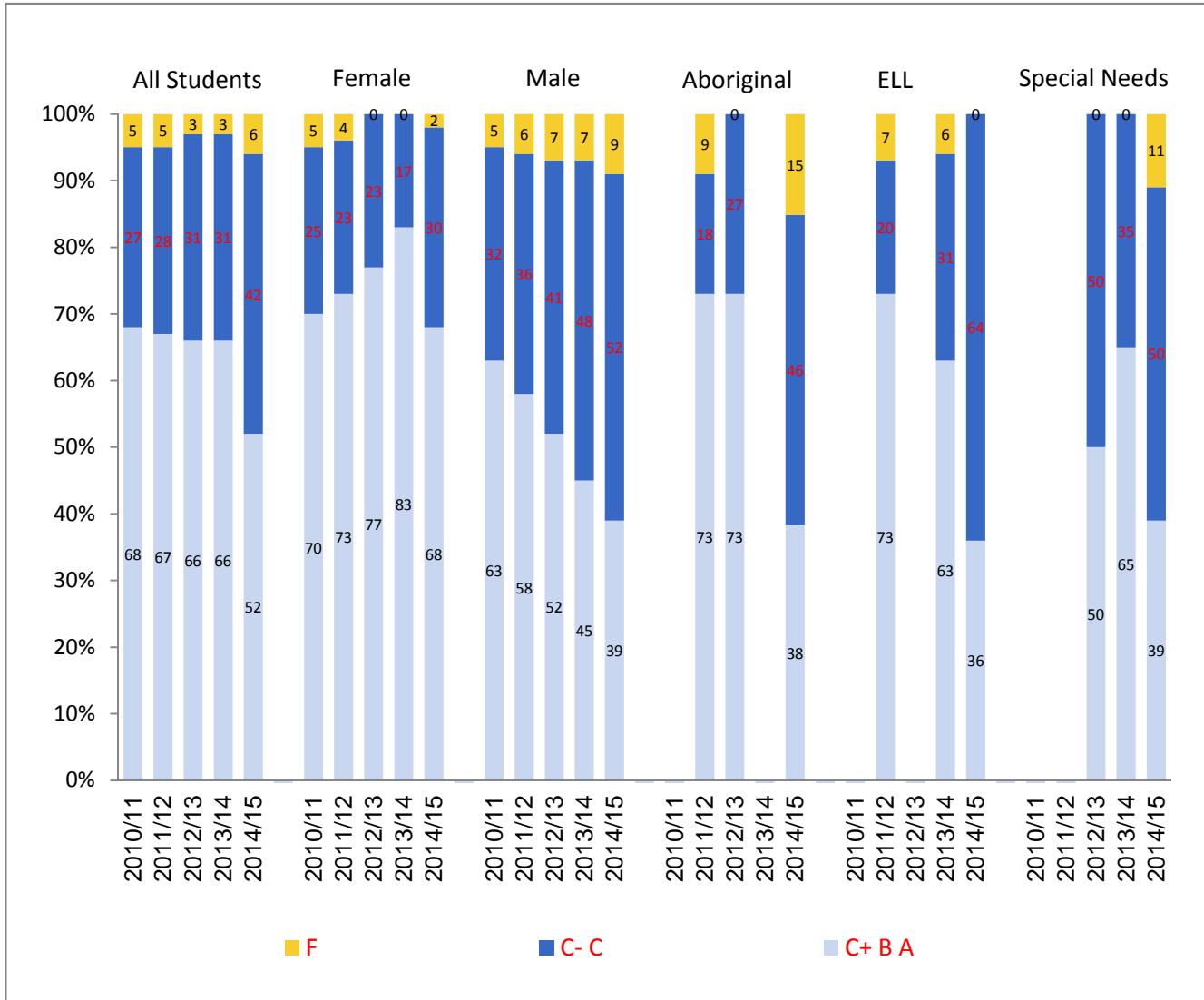
* Data represents only those students present in the school in September and/or February of year indicated

Provincial Required Examinations - 2014/15

036 - Surrey

BC FIRST NATIONS STUDIES 12 - Blended Final Marks

Distribution of Letter Grades by Subpopulation* - 2010/11 - 2014/15



* Due to rounding totals may not equal 100%

Provincial Required Examinations - 2014/15

036 - Surrey

BC FIRST NATIONS STUDIES 12 - Blended Final Marks

	School Year	Total Gr 12 Students*	Students Assigned Blended Final Mark	C- (pass) or Better		C+ (good) or Better		
				District		District		
				#	%	#	%	
Blended Final Marks	All Students	2010/11	9071	59	56	95	40	68
		2011/12	8844	128	122	95	86	67
		2012/13	8843	64	62	97	42	66
		2013/14	8306	96	93	97	63	66
		2014/15	6958	101	95	94	53	52
Female		2010/11	4574	40	38	95	28	70
		2011/12	4417	78	75	96	57	73
		2012/13	4393	35	35	100	27	77
		2013/14	4073	52	52	100	43	83
		2014/15	3409	47	46	98	32	68
Male		2010/11	4497	19	18	95	12	63
		2011/12	4427	50	47	94	29	58
		2012/13	4450	29	27	93	15	52
		2013/14	4233	44	41	93	20	45
		2014/15	3549	54	49	91	21	39
Aboriginal		2010/11	420	Msk	Msk	Msk	Msk	Msk
		2011/12	391	11	10	91	8	73
		2012/13	445	11	11	100	8	73
		2013/14	404	Msk	Msk	Msk	Msk	Msk
		2014/15	333	13	11	85	5	38
ELL		2010/11	335	Msk	Msk	Msk	Msk	Msk
		2011/12	289	15	14	93	11	73
		2012/13	298	Msk	Msk	Msk	Msk	Msk
		2013/14	344	16	15	94	10	63
		2014/15	357	11	11	100	4	36
Special Needs		2010/11	412	Msk	Msk	Msk	Msk	Msk
		2011/12	418	Msk	Msk	Msk	Msk	Msk
		2012/13	471	14	14	100	7	50
		2013/14	512	17	17	100	11	65
		2014/15	483	18	16	89	7	39

Distribution of Letter Grades

	School Year	F		C-		C		C+		B		A		
		#	%	#	%	#	%	#	%	#	%	#	%	
		Blended Final Marks	All Students	2014/15	6	6	19	19	23	23	9	9	25	25
	Female	2014/15	1	2	7	15	7	15	4	9	13	28	15	32
	Male	2014/15	5	9	12	22	16	30	5	9	12	22	4	7
	Aboriginal	2014/15	2	15	3	23	3	23	2	15	3	23	0	0
	ELL	2014/15	0	0	4	36	3	27	0	0	4	36	0	0
	Special Needs	2014/15	2	11	2	11	7	39	0	0	7	39	0	0

* Data represents only those students present in the school in September and/or February of year indicated

Provincial Required Examinations - 2014/15

036 - Surrey

BC FIRST NATIONS STUDIES 12 - Exam Marks

Exam Marks	All Students	School Year	Total Gr 12 Students*	Students Assigned Exam Mark	C- (pass) or Better		C+ (good) or Better	
					District		District	
					#	%	#	%
		2010/11	9071	59	53	90	26	44
		2011/12	8844	128	110	86	61	48
		2012/13	8843	64	53	83	16	25
		2013/14	8306	96	74	77	28	29
		2014/15	6958	101	88	87	37	37
	Female	2010/11	4574	40	35	88	18	45
		2011/12	4417	78	69	88	40	51
		2012/13	4393	35	31	89	11	31
		2013/14	4073	52	46	88	21	40
		2014/15	3409	47	45	96	25	53
	Male	2010/11	4497	19	18	95	8	42
		2011/12	4427	50	41	82	21	42
		2012/13	4450	29	22	76	5	17
		2013/14	4233	44	28	64	7	16
		2014/15	3549	54	43	80	12	22
	Aboriginal	2010/11	420	Msk	Msk	Msk	Msk	Msk
		2011/12	391	11	11	100	5	45
		2012/13	445	11	11	100	2	18
		2013/14	404	Msk	Msk	Msk	Msk	Msk
		2014/15	333	13	12	92	6	46
	ELL	2010/11	335	Msk	Msk	Msk	Msk	Msk
		2011/12	289	15	9	60	6	40
		2012/13	298	Msk	Msk	Msk	Msk	Msk
		2013/14	344	16	9	56	0	0
		2014/15	357	11	8	73	1	9
	Special Needs	2010/11	412	Msk	Msk	Msk	Msk	Msk
		2011/12	418	Msk	Msk	Msk	Msk	Msk
		2012/13	471	14	13	93	4	29
		2013/14	512	17	14	82	4	24
		2014/15	483	18	16	89	7	39

Distribution of Letter Grades

Exam Marks	All Students	School Year	F		C-		C		C+		B		A	
			#	%	#	%	#	%	#	%	#	%	#	%
				2014/15	13	13	26	26	25	25	14	14	16	16
	Female	2014/15	2	4	11	23	9	19	9	19	9	19	7	15
	Male	2014/15	11	20	15	28	16	30	5	9	7	13	0	0
	Aboriginal	2014/15	1	8	3	23	3	23	4	31	2	15	0	0
	ELL	2014/15	3	27	4	36	3	27	1	9	0	0	0	0
	Special Needs	2014/15	2	11	6	33	3	17	7	39	0	0	0	0

* Data represents only those students present in the school in September and/or February of year indicated

Provincial Required Examinations - 2014/15

036 - Surrey

BC FIRST NATIONS STUDIES 12 - Course Marks

Course Marks	All Students	School Year	Total Gr 12 Students*	Students Assigned Course Mark	C- (pass) or Better		C+ (good) or Better	
					District		District	
					#	%	#	%
		2010/11	9071	59	55	93	44	75
		2011/12	8844	128	122	95	90	70
		2012/13	8843	64	63	98	47	73
		2013/14	8306	96	93	97	69	72
		2014/15	6958	101	94	93	58	57
	Female	2010/11	4574	40	37	93	31	78
		2011/12	4417	78	75	96	60	77
		2012/13	4393	35	35	100	30	86
		2013/14	4073	52	52	100	45	87
		2014/15	3409	47	45	96	32	68
	Male	2010/11	4497	19	18	95	13	68
		2011/12	4427	50	47	94	30	60
		2012/13	4450	29	28	97	17	59
		2013/14	4233	44	41	93	24	55
		2014/15	3549	54	49	91	26	48
	Aboriginal	2010/11	420	Msk	Msk	Msk	Msk	Msk
		2011/12	391	11	10	91	8	73
		2012/13	445	11	11	100	8	73
		2013/14	404	Msk	Msk	Msk	Msk	Msk
		2014/15	333	13	11	85	4	31
	ELL	2010/11	335	Msk	Msk	Msk	Msk	Msk
		2011/12	289	15	15	100	12	80
		2012/13	298	Msk	Msk	Msk	Msk	Msk
		2013/14	344	16	15	94	12	75
		2014/15	357	11	11	100	6	55
	Special Needs	2010/11	412	Msk	Msk	Msk	Msk	Msk
		2011/12	418	Msk	Msk	Msk	Msk	Msk
		2012/13	471	14	14	100	7	50
		2013/14	512	17	17	100	11	65
		2014/15	483	18	16	89	9	50

Distribution of Letter Grades

Course Marks	All Students	2014/15	F		C-		C		C+		B		A	
			#	%	#	%	#	%	#	%	#	%	#	%
					2014/15	7	7	14	14	22	22	12	12	16
	Female	2014/15	2	4	5	11	8	17	3	6	6	13	23	49
	Male	2014/15	5	9	9	17	14	26	9	17	10	19	7	13
	Aboriginal	2014/15	2	15	3	23	4	31	0	0	3	23	1	8
	ELL	2014/15	0	0	3	27	2	18	2	18	2	18	2	18
	Special Needs	2014/15	2	11	3	17	4	22	2	11	2	11	5	28

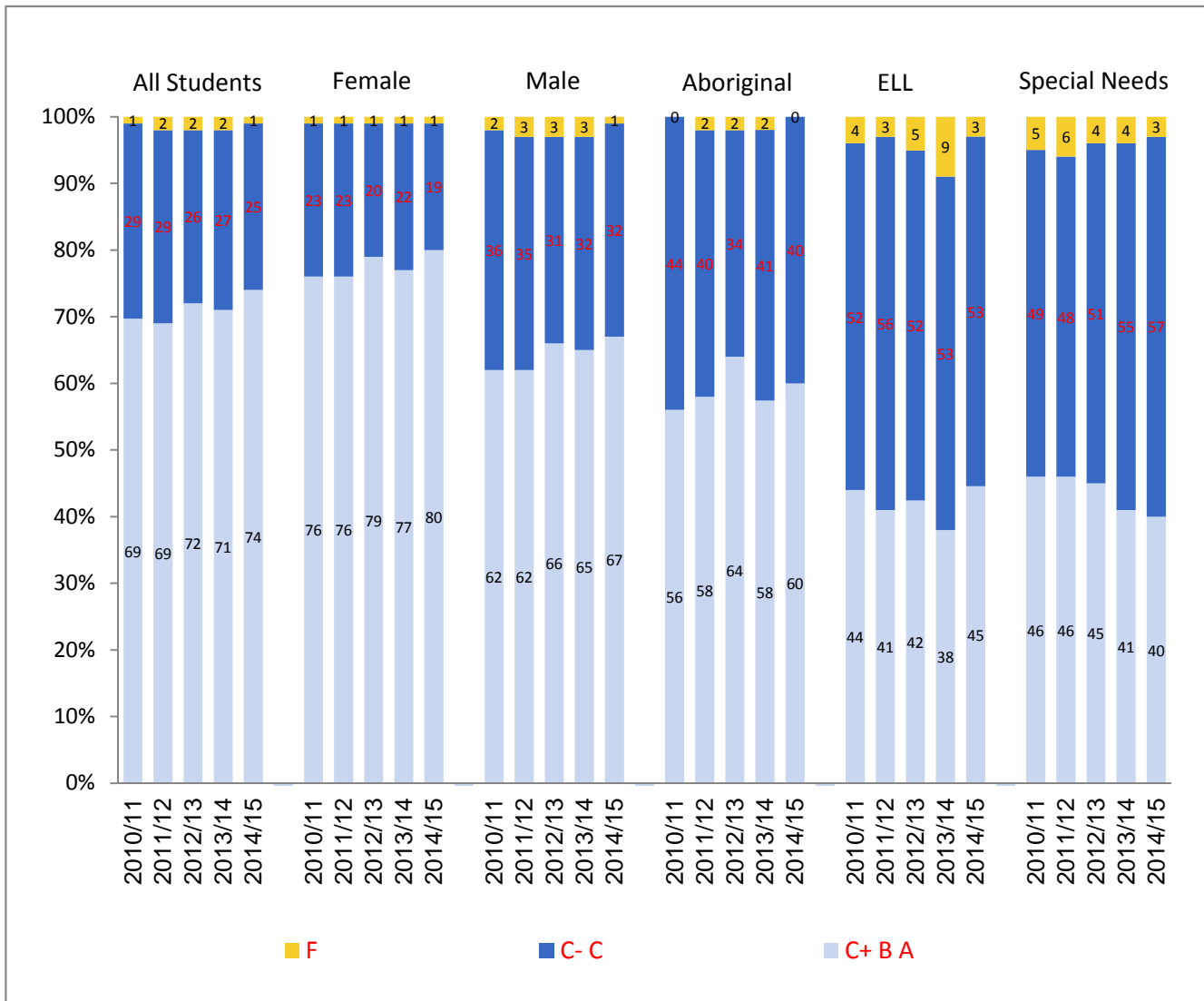
* Data represents only those students present in the school in September and/or February of year indicated

Provincial Required Examinations - 2014/15

036 - Surrey

ENGLISH 12 - Blended Final Marks

Distribution of Letter Grades by Subpopulation* - 2010/11 - 2014/15



* Due to rounding totals may not equal 100%

Provincial Required Examinations - 2014/15

036 - Surrey

ENGLISH 12 - Blended Final Marks

	School Year	Total Gr 12 Students*	Students Assigned Blended Final Mark	C- (pass) or Better		C+ (good) or Better		
				District		District		
				#	%	#	%	
Blended Final Marks	All Students	2010/11	9071	4840	4770	99	3344	69
		2011/12	8844	5023	4921	98	3461	69
		2012/13	8843	5290	5192	98	3828	72
		2013/14	8306	5073	4971	98	3590	71
		2014/15	6958	4975	4927	99	3666	74
	Female	2010/11	4574	2426	2404	99	1839	76
		2011/12	4417	2575	2544	99	1945	76
		2012/13	4393	2704	2680	99	2130	79
		2013/14	4073	2608	2583	99	1998	77
		2014/15	3409	2592	2575	99	2074	80
	Male	2010/11	4497	2414	2366	98	1505	62
		2011/12	4427	2448	2377	97	1516	62
		2012/13	4450	2586	2512	97	1698	66
		2013/14	4233	2465	2388	97	1592	65
		2014/15	3549	2383	2352	99	1592	67
	Aboriginal	2010/11	420	119	119	100	67	56
		2011/12	391	107	105	98	62	58
		2012/13	445	141	138	98	90	64
		2013/14	404	111	109	98	64	58
		2014/15	333	124	124	100	75	60
	ELL	2010/11	335	197	190	96	87	44
		2011/12	289	144	139	97	59	41
	2012/13	298	147	139	95	62	42	
	2013/14	344	156	142	91	60	38	
	2014/15	357	157	153	97	70	45	
Special Needs	2010/11	412	116	110	95	53	46	
	2011/12	418	124	117	94	57	46	
	2012/13	471	135	130	96	61	45	
	2013/14	512	146	140	96	60	41	
	2014/15	483	181	176	97	73	40	

Distribution of Letter Grades

	School Year	F		C-		C		C+		B		A		
		#	%	#	%	#	%	#	%	#	%	#	%	
		Blended Final Marks	All Students	2014/15	48	1	514	10	747	15	984	20	1996	40
	Female	2014/15	17	1	184	7	317	12	472	18	1138	44	464	18
	Male	2014/15	31	1	330	14	430	18	512	21	858	36	222	9
	Aboriginal	2014/15	0	0	23	19	26	21	22	18	49	40	4	3
	ELL	2014/15	4	3	43	27	40	25	46	29	22	14	2	1
	Special Needs	2014/15	5	3	47	26	56	31	38	21	33	18	2	1

* Data represents only those students present in the school in September and/or February of year indicated

Provincial Required Examinations - 2014/15

036 - Surrey

ENGLISH 12 - Exam Marks

Exam Marks	All Students	School Year	Total Gr 12 Students*	Students Assigned Exam Mark	C- (pass) or Better		C+ (good) or Better	
					District		District	
					#	%	#	%
		2010/11	9071	4840	4477	93	2705	56
		2011/12	8844	5023	4579	91	2941	59
		2012/13	8843	5290	4913	93	3314	63
		2013/14	8306	5073	4658	92	3064	60
		2014/15	6958	4975	4655	94	3149	63
	Female	2010/11	4574	2426	2286	94	1498	62
		2011/12	4417	2575	2392	93	1657	64
		2012/13	4393	2704	2562	95	1833	68
		2013/14	4073	2608	2440	94	1731	66
		2014/15	3409	2592	2452	95	1758	68
	Male	2010/11	4497	2414	2191	91	1207	50
		2011/12	4427	2448	2187	89	1284	52
		2012/13	4450	2586	2351	91	1481	57
		2013/14	4233	2465	2218	90	1333	54
		2014/15	3549	2383	2203	92	1391	58
	Aboriginal	2010/11	420	119	114	96	65	55
		2011/12	391	107	101	94	71	66
		2012/13	445	141	137	97	82	58
		2013/14	404	111	108	97	73	66
		2014/15	333	124	121	98	68	55
	ELL	2010/11	335	197	143	73	36	18
		2011/12	289	144	89	62	19	13
		2012/13	298	147	93	63	24	16
		2013/14	344	156	89	57	24	15
		2014/15	357	157	107	68	34	22
	Special Needs	2010/11	412	116	96	83	37	32
		2011/12	418	124	108	87	48	39
		2012/13	471	135	113	84	56	41
		2013/14	512	146	120	82	47	32
		2014/15	483	181	156	86	63	35

Distribution of Letter Grades

Exam Marks	All Students	School Year	F		C-		C		C+		B		A	
			#	%	#	%	#	%	#	%	#	%	#	%
			2014/15	320	6	542	11	964	19	1211	24	1329	27	609
	Female	2014/15	140	5	250	10	444	17	647	25	739	29	372	14
	Male	2014/15	180	8	292	12	520	22	564	24	590	25	237	10
	Aboriginal	2014/15	3	2	18	15	35	28	37	30	24	19	7	6
	ELL	2014/15	50	32	43	27	30	19	18	11	14	9	2	1
	Special Needs	2014/15	25	14	45	25	48	27	40	22	20	11	3	2

* Data represents only those students present in the school in September and/or February of year indicated

Provincial Required Examinations - 2014/15

036 - Surrey

ENGLISH 12 - Course Marks

Course Marks	All Students	School Year	Total Gr 12 Students*	Students Assigned Course Mark	C- (pass) or Better		C+ (good) or Better	
					District		District	
					#	%	#	%
		2010/11	9071	4840	4744	98	3708	77
		2011/12	8844	5023	4911	98	3832	76
		2012/13	8843	5290	5169	98	4139	78
		2013/14	8306	5073	4956	98	3934	78
		2014/15	6958	4975	4906	99	3948	79
	Female	2010/11	4574	2426	2397	99	1999	82
		2011/12	4417	2575	2546	99	2126	83
		2012/13	4393	2704	2668	99	2274	84
		2013/14	4073	2608	2576	99	2170	83
		2014/15	3409	2592	2568	99	2229	86
	Male	2010/11	4497	2414	2347	97	1709	71
		2011/12	4427	2448	2365	97	1706	70
		2012/13	4450	2586	2501	97	1865	72
		2013/14	4233	2465	2380	97	1764	72
		2014/15	3549	2383	2338	98	1719	72
	Aboriginal	2010/11	420	119	116	97	75	63
		2011/12	391	107	102	95	61	57
		2012/13	445	141	134	95	93	66
		2013/14	404	111	105	95	62	56
		2014/15	333	124	118	95	81	65
	ELL	2010/11	335	197	195	99	135	69
		2011/12	289	144	141	98	99	69
		2012/13	298	147	143	97	101	69
		2013/14	344	156	147	94	105	67
		2014/15	357	157	154	98	108	69
	Special Needs	2010/11	412	116	109	94	66	57
		2011/12	418	124	118	95	71	57
		2012/13	471	135	127	94	74	55
		2013/14	512	146	139	95	73	50
		2014/15	483	181	172	95	96	53

Distribution of Letter Grades

Course Marks	All Students	2014/15	F		C-		C		C+		B		A	
			#	%	#	%	#	%	#	%	#	%	#	%
					2014/15	69	1	419	8	539	11	703	14	2042
	Female	2014/15	24	1	138	5	201	8	339	13	1091	42	799	31
	Male	2014/15	45	2	281	12	338	14	364	15	951	40	404	17
	Aboriginal	2014/15	6	5	19	15	18	15	20	16	45	36	16	13
	ELL	2014/15	3	2	16	10	30	19	38	24	63	40	7	4
	Special Needs	2014/15	9	5	34	19	42	23	40	22	51	28	5	3

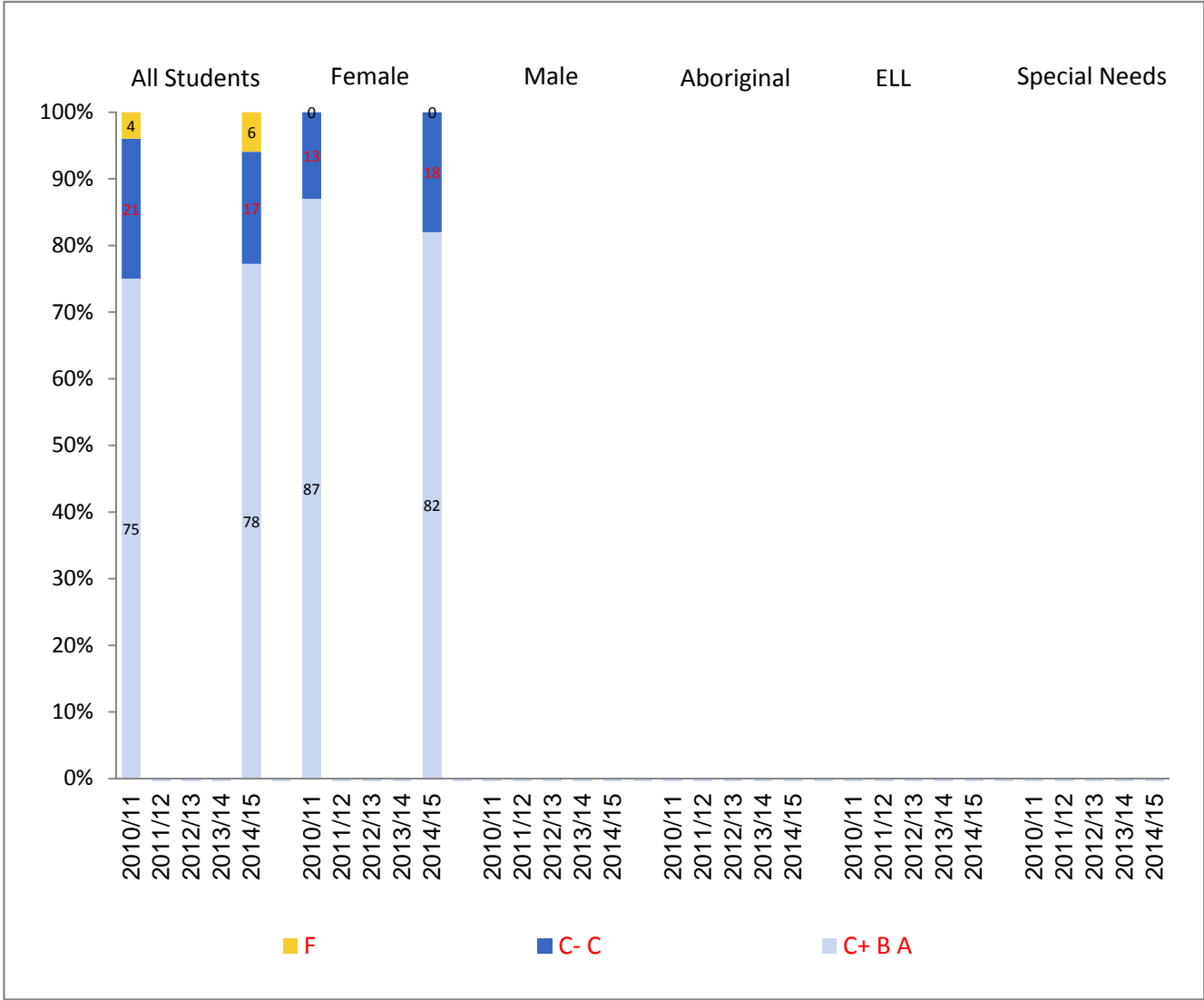
* Data represents only those students present in the school in September and/or February of year indicated

Provincial Required Examinations - 2014/15

036 - Surrey

ENGLISH 12: FIRST PEOPLES - Blended Final Marks

Distribution of Letter Grades by Subpopulation* - 2010/11 - 2014/15



* Due to rounding totals may not equal 100%

Provincial Required Examinations - 2014/15

036 - Surrey

ENGLISH 12: FIRST PEOPLES - Blended Final Marks

	School Year	Total Gr 12 Students*	Students Assigned Blended Final Mark #	C- (pass) or Better		C+ (good) or Better		
				District		District		
				#	%	#	%	
Blended Final Marks	All Students	2010/11	9071	24	23	96	18	75
		2011/12	8844	-	-	-	-	-
		2012/13	8843	-	-	-	-	-
		2013/14	8306	Msk	Msk	Msk	Msk	Msk
		2014/15	6958	18	17	94	14	78
	Female	2010/11	4574	15	15	100	13	87
		2011/12	4417	-	-	-	-	-
		2012/13	4393	-	-	-	-	-
		2013/14	4073	Msk	Msk	Msk	Msk	Msk
		2014/15	3409	11	11	100	9	82
	Male	2010/11	4497	Msk	Msk	Msk	Msk	Msk
		2011/12	4427	-	-	-	-	-
		2012/13	4450	-	-	-	-	-
		2013/14	4233	-	-	-	-	-
		2014/15	3549	Msk	Msk	Msk	Msk	Msk
	Aboriginal	2010/11	420	Msk	Msk	Msk	Msk	Msk
		2011/12	391	-	-	-	-	-
		2012/13	445	-	-	-	-	-
		2013/14	404	-	-	-	-	-
		2014/15	333	Msk	Msk	Msk	Msk	Msk
	ELL	2010/11	335	-	-	-	-	-
		2011/12	289	-	-	-	-	-
	2012/13	298	-	-	-	-	-	
	2013/14	344	-	-	-	-	-	
	2014/15	357	-	-	-	-	-	
Special Needs	2010/11	412	-	-	-	-	-	
	2011/12	418	-	-	-	-	-	
	2012/13	471	-	-	-	-	-	
	2013/14	512	-	-	-	-	-	
	2014/15	483	Msk	Msk	Msk	Msk	Msk	

Distribution of Letter Grades

	School Year	F		C-		C		C+		B		A		
		#	%	#	%	#	%	#	%	#	%	#	%	
Blended Final Marks	All Students	2014/15	1	6	0	0	3	17	5	28	8	44	1	6
	Female	2014/15	0	0	0	0	2	18	4	36	4	36	1	9
	Male	2014/15	Msk	Msk	Msk	Msk	Msk	Msk	Msk	Msk	Msk	Msk	Msk	Msk
	Aboriginal	2014/15	Msk	Msk	Msk	Msk	Msk	Msk	Msk	Msk	Msk	Msk	Msk	Msk
	ELL	2014/15	-	-	-	-	-	-	-	-	-	-	-	-
	Special Needs	2014/15	Msk	Msk	Msk	Msk	Msk	Msk	Msk	Msk	Msk	Msk	Msk	Msk

* Data represents only those students present in the school in September and/or February of year indicated

Provincial Required Examinations - 2014/15

036 - Surrey

ENGLISH 12: FIRST PEOPLES - Exam Marks

Exam Marks	All Students	School Year	Total Gr 12 Students*	Students Assigned Exam Mark	C- (pass) or Better		C+ (good) or Better	
					District		District	
					#	%	#	%
		2010/11	9071	24	23	96	18	75
		2011/12	8844	-	-	-	-	-
		2012/13	8843	-	-	-	-	-
		2013/14	8306	Msk	Msk	Msk	Msk	Msk
		2014/15	6958	18	18	100	17	94
	Female	2010/11	4574	15	15	100	14	93
		2011/12	4417	-	-	-	-	-
		2012/13	4393	-	-	-	-	-
		2013/14	4073	Msk	Msk	Msk	Msk	Msk
		2014/15	3409	11	11	100	10	91
	Male	2010/11	4497	Msk	Msk	Msk	Msk	Msk
		2011/12	4427	-	-	-	-	-
		2012/13	4450	-	-	-	-	-
		2013/14	4233	-	-	-	-	-
		2014/15	3549	Msk	Msk	Msk	Msk	Msk
	Aboriginal	2010/11	420	Msk	Msk	Msk	Msk	Msk
		2011/12	391	-	-	-	-	-
		2012/13	445	-	-	-	-	-
		2013/14	404	-	-	-	-	-
		2014/15	333	Msk	Msk	Msk	Msk	Msk
	ELL	2010/11	335	-	-	-	-	-
		2011/12	289	-	-	-	-	-
		2012/13	298	-	-	-	-	-
		2013/14	344	-	-	-	-	-
		2014/15	357	-	-	-	-	-
	Special Needs	2010/11	412	-	-	-	-	-
		2011/12	418	-	-	-	-	-
		2012/13	471	-	-	-	-	-
		2013/14	512	-	-	-	-	-
		2014/15	483	Msk	Msk	Msk	Msk	Msk

Distribution of Letter Grades

Exam Marks	All Students	School Year	F		C-		C		C+		B		A	
			#	%	#	%	#	%	#	%	#	%	#	%
				2014/15	0	0	1	6	0	0	4	22	10	56
	Female	2014/15	0	0	1	9	0	0	2	18	5	45	3	27
	Male	2014/15	Msk	Msk	Msk	Msk	Msk	Msk	Msk	Msk	Msk	Msk	Msk	
	Aboriginal	2014/15	Msk	Msk	Msk	Msk	Msk	Msk	Msk	Msk	Msk	Msk	Msk	
	ELL	2014/15	-	-	-	-	-	-	-	-	-	-	-	
	Special Needs	2014/15	Msk	Msk	Msk	Msk	Msk	Msk	Msk	Msk	Msk	Msk	Msk	

* Data represents only those students present in the school in September and/or February of year indicated

Provincial Required Examinations - 2014/15

036 - Surrey

ENGLISH 12: FIRST PEOPLES - Course Marks

Course Marks	All Students	School Year	Total Gr 12 Students*	Students Assigned Course Mark	C- (pass) or Better		C+ (good) or Better	
					District		District	
					#	%	#	%
		2010/11	9071	24	23	96	18	75
		2011/12	8844	-	-	-	-	-
		2012/13	8843	-	-	-	-	-
		2013/14	8306	Msk	Msk	Msk	Msk	Msk
		2014/15	6958	18	17	94	13	72
	Female	2010/11	4574	15	15	100	13	87
		2011/12	4417	-	-	-	-	-
		2012/13	4393	-	-	-	-	-
		2013/14	4073	Msk	Msk	Msk	Msk	Msk
		2014/15	3409	11	11	100	8	73
	Male	2010/11	4497	Msk	Msk	Msk	Msk	Msk
		2011/12	4427	-	-	-	-	-
		2012/13	4450	-	-	-	-	-
		2013/14	4233	-	-	-	-	-
		2014/15	3549	Msk	Msk	Msk	Msk	Msk
	Aboriginal	2010/11	420	Msk	Msk	Msk	Msk	Msk
		2011/12	391	-	-	-	-	-
		2012/13	445	-	-	-	-	-
		2013/14	404	-	-	-	-	-
		2014/15	333	Msk	Msk	Msk	Msk	Msk
	ELL	2010/11	335	-	-	-	-	-
		2011/12	289	-	-	-	-	-
		2012/13	298	-	-	-	-	-
		2013/14	344	-	-	-	-	-
		2014/15	357	-	-	-	-	-
	Special Needs	2010/11	412	-	-	-	-	-
		2011/12	418	-	-	-	-	-
		2012/13	471	-	-	-	-	-
		2013/14	512	-	-	-	-	-
		2014/15	483	Msk	Msk	Msk	Msk	Msk

Distribution of Letter Grades

Course Marks	All Students	2014/15	F		C-		C		C+		B		A	
			#	%	#	%	#	%	#	%	#	%	#	%
					2014/15	1	6	1	6	3	17	6	33	6
	Female	2014/15	0	0	1	9	2	18	4	36	3	27	1	9
	Male	2014/15	Msk	Msk	Msk	Msk	Msk	Msk	Msk	Msk	Msk	Msk	Msk	Msk
	Aboriginal	2014/15	Msk	Msk	Msk	Msk	Msk	Msk	Msk	Msk	Msk	Msk	Msk	Msk
	ELL	2014/15	-	-	-	-	-	-	-	-	-	-	-	-
	Special Needs	2014/15	Msk	Msk	Msk	Msk	Msk	Msk	Msk	Msk	Msk	Msk	Msk	Msk

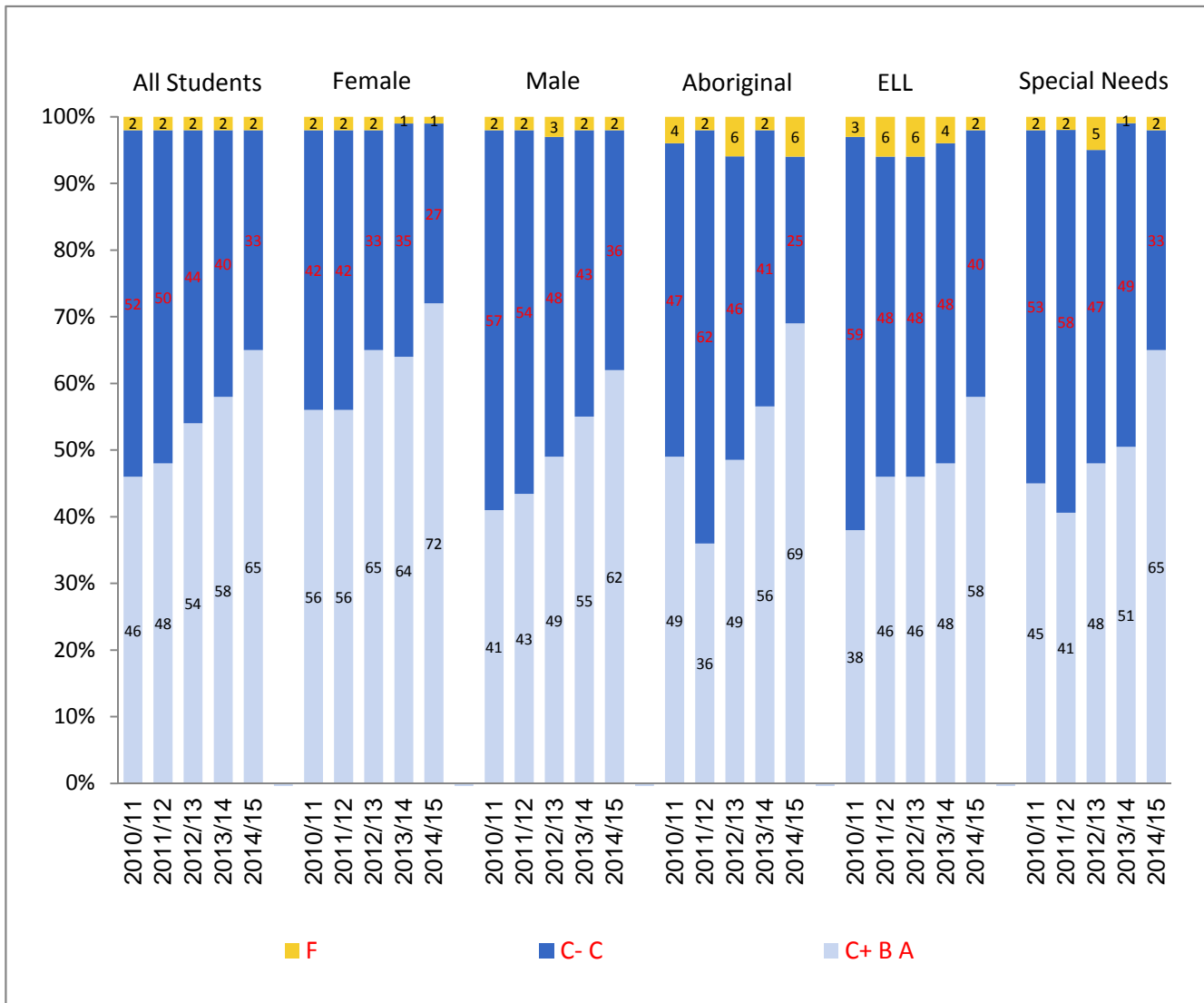
* Data represents only those students present in the school in September and/or February of year indicated

Provincial Required Examinations - 2014/15

036 - Surrey

COMMUNICATIONS 12 - Blended Final Marks

Distribution of Letter Grades by Subpopulation* - 2010/11 - 2014/15



* Due to rounding totals may not equal 100%

Provincial Required Examinations - 2014/15

036 - Surrey

COMMUNICATIONS 12 - Blended Final Marks

	School Year	Total Gr 12 Students*	Students Assigned Blended Final Mark	C- (pass) or Better		C+ (good) or Better		
				District		District		
				#	%	#	%	
Blended Final Marks	All Students	2010/11	9071	622	609	98	288	46
		2011/12	8844	746	730	98	355	48
		2012/13	8843	726	708	98	390	54
		2013/14	8306	748	736	98	437	58
		2014/15	6958	653	641	98	425	65
	Female	2010/11	4574	210	206	98	118	56
		2011/12	4417	245	241	98	138	56
		2012/13	4393	214	210	98	140	65
		2013/14	4073	258	256	99	166	64
		2014/15	3409	204	201	99	146	72
	Male	2010/11	4497	412	403	98	170	41
		2011/12	4427	501	489	98	217	43
		2012/13	4450	512	498	97	250	49
		2013/14	4233	490	480	98	271	55
		2014/15	3549	449	440	98	279	62
	Aboriginal	2010/11	420	55	53	96	27	49
		2011/12	391	45	44	98	16	36
		2012/13	445	70	66	94	34	49
		2013/14	404	41	40	98	23	56
		2014/15	333	36	34	94	25	69
ELL	2010/11	335	76	74	97	29	38	
	2011/12	289	82	77	94	38	46	
	2012/13	298	89	84	94	41	46	
	2013/14	344	98	94	96	47	48	
	2014/15	357	97	95	98	56	58	
Special Needs	2010/11	412	99	97	98	45	45	
	2011/12	418	113	111	98	46	41	
	2012/13	471	133	127	95	64	48	
	2013/14	512	158	157	99	80	51	
	2014/15	483	121	119	98	79	65	

Distribution of Letter Grades

	School Year	F		C-		C		C+		B		A		
		#	%	#	%	#	%	#	%	#	%	#	%	
		Blended Final Marks	All Students	2014/15	12	2	72	11	144	22	172	26	229	35
	Female	2014/15	3	1	14	7	41	20	48	24	84	41	14	7
	Male	2014/15	9	2	58	13	103	23	124	28	145	32	10	2
	Aboriginal	2014/15	2	6	1	3	8	22	7	19	16	44	2	6
	ELL	2014/15	2	2	18	19	21	22	24	25	30	31	2	2
	Special Needs	2014/15	2	2	16	13	24	20	32	26	42	35	5	4

* Data represents only those students present in the school in September and/or February of year indicated

Provincial Required Examinations - 2014/15

036 - Surrey

COMMUNICATIONS 12 - Exam Marks

Exam Marks	All Students	School Year	Total Gr 12 Students*	Students Assigned Exam Mark	C- (pass) or Better		C+ (good) or Better	
					District		District	
					#	%	#	%
		2010/11	9071	622	561	90	327	53
		2011/12	8844	746	659	88	353	47
		2012/13	8843	726	675	93	424	58
		2013/14	8306	748	676	90	425	57
		2014/15	6958	653	611	94	400	61
	Female	2010/11	4574	210	191	91	110	52
		2011/12	4417	245	215	88	115	47
		2012/13	4393	214	201	94	136	64
		2013/14	4073	258	236	91	151	59
		2014/15	3409	204	188	92	132	65
	Male	2010/11	4497	412	370	90	217	53
		2011/12	4427	501	444	89	238	48
		2012/13	4450	512	474	93	288	56
		2013/14	4233	490	440	90	274	56
		2014/15	3549	449	423	94	268	60
	Aboriginal	2010/11	420	55	48	87	34	62
		2011/12	391	45	41	91	20	44
		2012/13	445	70	65	93	48	69
		2013/14	404	41	39	95	27	66
		2014/15	333	36	33	92	26	72
	ELL	2010/11	335	76	57	75	23	30
		2011/12	289	82	61	74	22	27
		2012/13	298	89	76	85	31	35
		2013/14	344	98	78	80	39	40
		2014/15	357	97	84	87	34	35
	Special Needs	2010/11	412	99	92	93	60	61
		2011/12	418	113	99	88	50	44
		2012/13	471	133	123	92	83	62
		2013/14	512	158	146	92	88	56
		2014/15	483	121	115	95	81	67

Distribution of Letter Grades

Exam Marks	All Students	School Year	F		C-		C		C+		B		A	
			#	%	#	%	#	%	#	%	#	%	#	%
				2014/15	42	6	78	12	133	20	200	31	143	22
	Female	2014/15	16	8	22	11	34	17	54	26	53	26	25	12
	Male	2014/15	26	6	56	12	99	22	146	33	90	20	32	7
	Aboriginal	2014/15	3	8	2	6	5	14	11	31	11	31	4	11
	ELL	2014/15	13	13	22	23	28	29	20	21	11	11	3	3
	Special Needs	2014/15	6	5	14	12	20	17	39	32	35	29	7	6

* Data represents only those students present in the school in September and/or February of year indicated

Provincial Required Examinations - 2014/15

036 - Surrey

COMMUNICATIONS 12 - Course Marks

Course Marks	All Students	School Year	Total Gr 12 Students*	Students Assigned Course Mark	C- (pass) or Better		C+ (good) or Better	
					District		District	
					#	%	#	%
		2010/11	9071	622	584	94	285	46
		2011/12	8844	746	714	96	395	53
		2012/13	8843	726	694	96	384	53
		2013/14	8306	748	729	97	457	61
		2014/15	6958	653	638	98	434	66
	Female	2010/11	4574	210	201	96	119	57
		2011/12	4417	245	240	98	154	63
		2012/13	4393	214	206	96	129	60
		2013/14	4073	258	251	97	163	63
		2014/15	3409	204	201	99	149	73
	Male	2010/11	4497	412	383	93	166	40
		2011/12	4427	501	474	95	241	48
		2012/13	4450	512	488	95	255	50
		2013/14	4233	490	478	98	294	60
		2014/15	3549	449	437	97	285	63
	Aboriginal	2010/11	420	55	51	93	19	35
		2011/12	391	45	42	93	21	47
		2012/13	445	70	64	91	27	39
		2013/14	404	41	39	95	19	46
		2014/15	333	36	35	97	24	67
	ELL	2010/11	335	76	73	96	38	50
		2011/12	289	82	81	99	57	70
		2012/13	298	89	88	99	52	58
		2013/14	344	98	97	99	64	65
		2014/15	357	97	97	100	66	68
	Special Needs	2010/11	412	99	92	93	40	40
		2011/12	418	113	108	96	55	49
		2012/13	471	133	121	91	60	45
		2013/14	512	158	154	97	84	53
		2014/15	483	121	114	94	76	63

Distribution of Letter Grades

Course Marks	All Students	2014/15	F		C-		C		C+		B		A	
			#	%	#	%	#	%	#	%	#	%	#	%
					2014/15	15	2	85	13	119	18	133	20	231
	Female	2014/15	3	1	16	8	36	18	33	16	81	40	35	17
	Male	2014/15	12	3	69	15	83	18	100	22	150	33	35	8
	Aboriginal	2014/15	1	3	5	14	6	17	3	8	15	42	6	17
	ELL	2014/15	0	0	13	13	18	19	22	23	33	34	11	11
	Special Needs	2014/15	7	6	14	12	24	20	20	17	38	31	18	15

* Data represents only those students present in the school in September and/or February of year indicated