

Overview of Class Size and Composition in British Columbia Public Schools 2015/16

Provincial Overview

These class size data are current as of October 31, 2015 and have been verified by school districts.

PLEASE NOTE

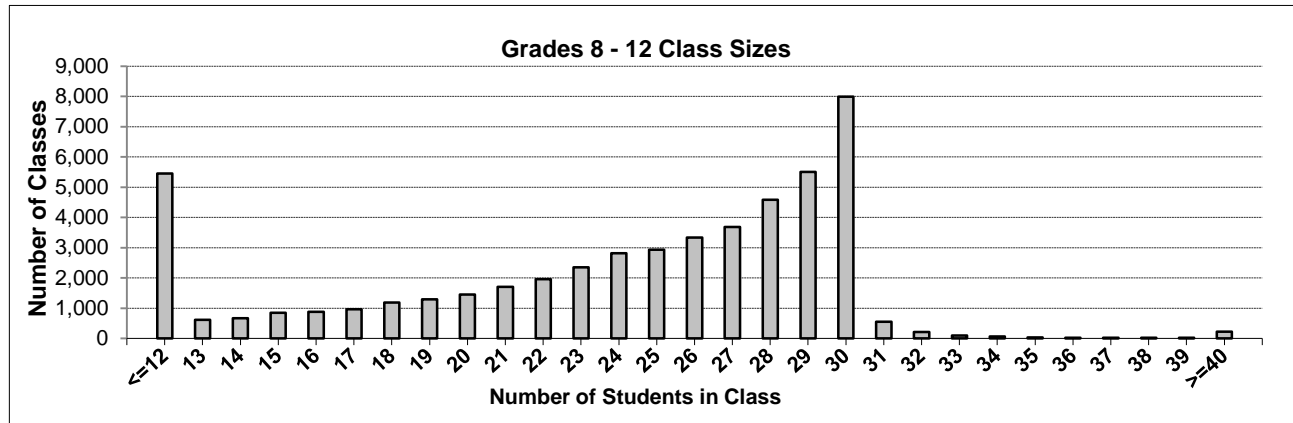
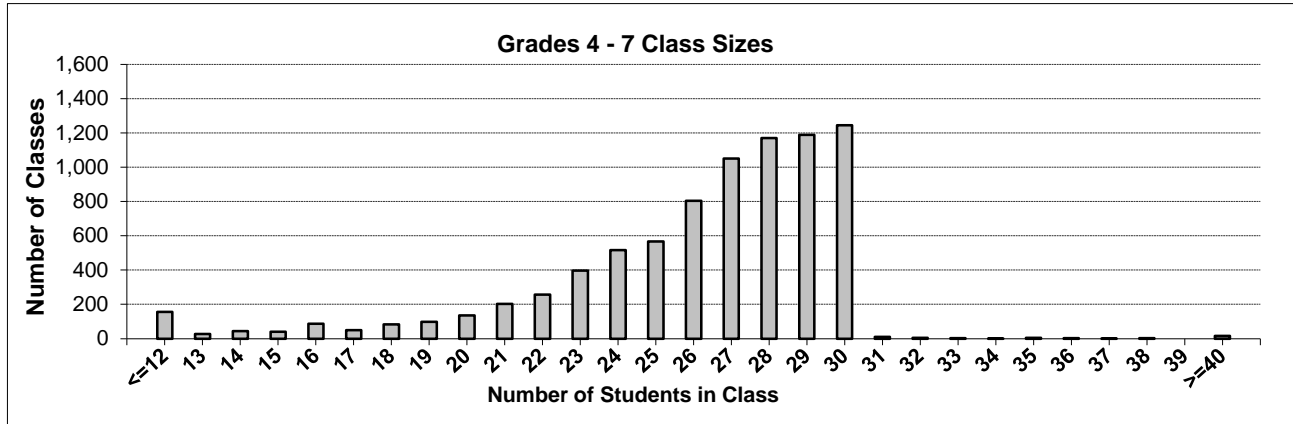
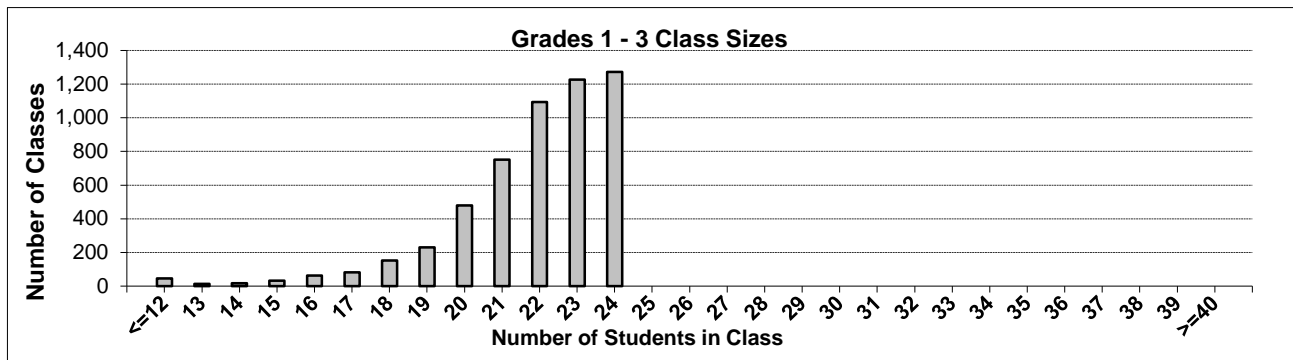
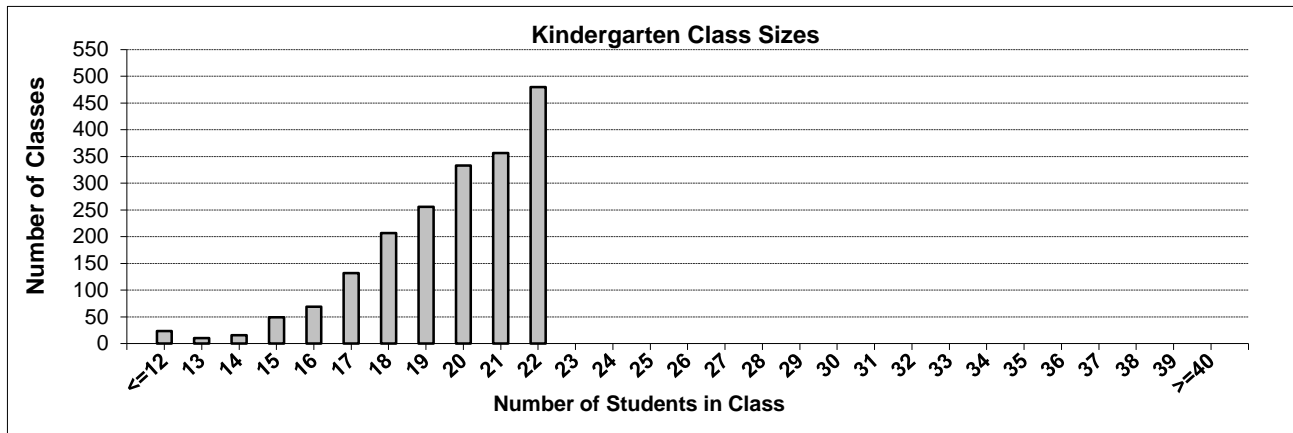
The Ministry makes small and continuous improvements to the quality of its data. Sometimes these changes result in differences from previously published reports. The data in this report are the most accurate data available at time of publication.

Ministry reports are available at <http://www.bced.gov.bc.ca/reporting/>

Contact the Analysis and Reporting Unit at educ.reportingunit@gov.bc.ca

Province - Average Class Size

Source: Class size data collection (as of October 31) from BC public schools.



Province - Average Class Size

Source: Class size data collection (as of October 31) from BC public schools.

Province - Average Class Size	Kindergarten	Grade 1 - 3	Grade 4 - 7	Grade 8 - 12
	19.7	21.8	26.0	23.4

Number of Reported Classes with Assigned Education Assistants	19,800
---	--------

Number of Reported Schools in Province	1,380
--	-------

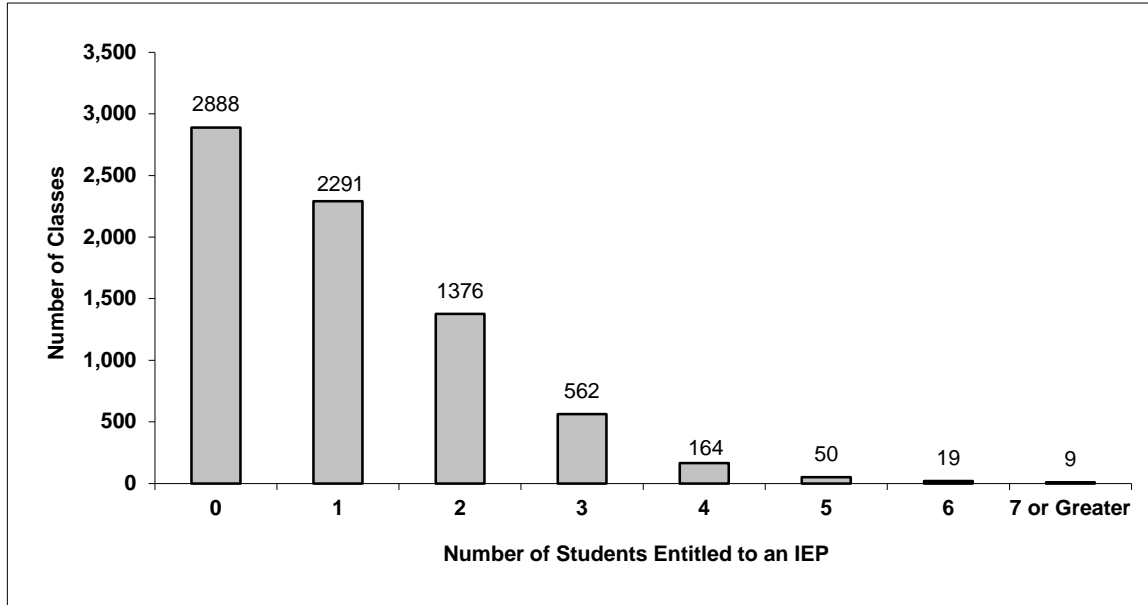
Number of Reported Classes in Province	67,107
--	--------

Number of Reported Classes in Province with more than 30 students	1,343
---	-------

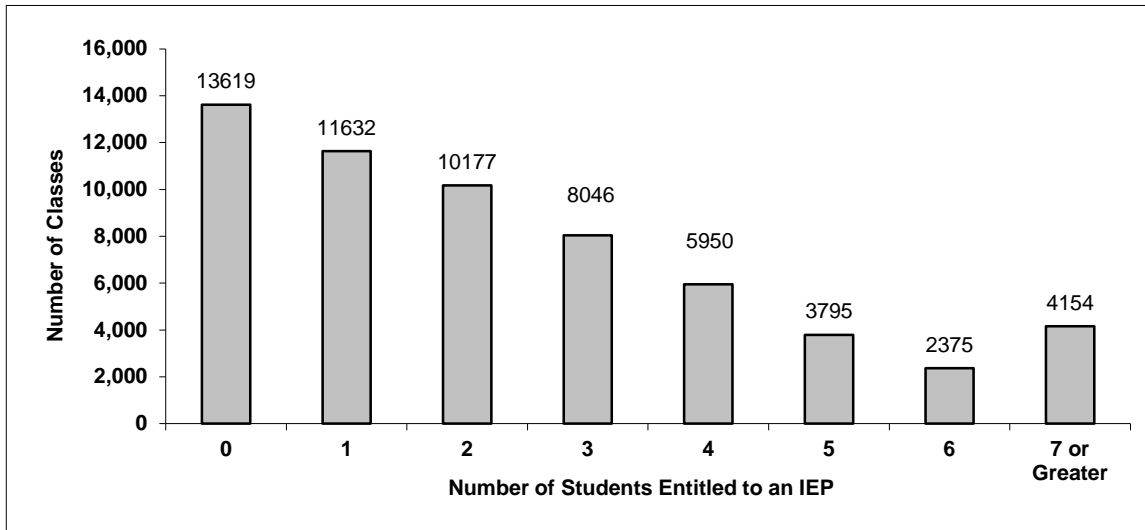
Province - Students Entitled to an Individual Education Plan (IEP)

Source: Class size data collection (as of October 31) from BC public schools.

Grades K-3 - Number of Classes in Province with 'X' Number of Students Entitled to an IEP



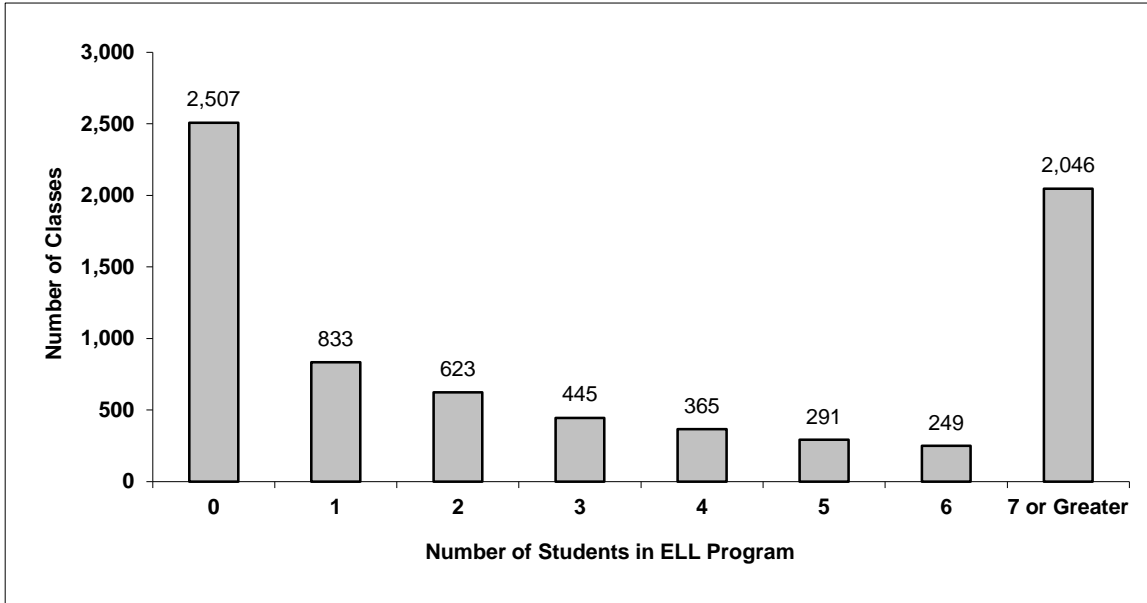
Grades 4-12 - Number of Classes in Province with 'X' Number of Students Entitled to an IEP



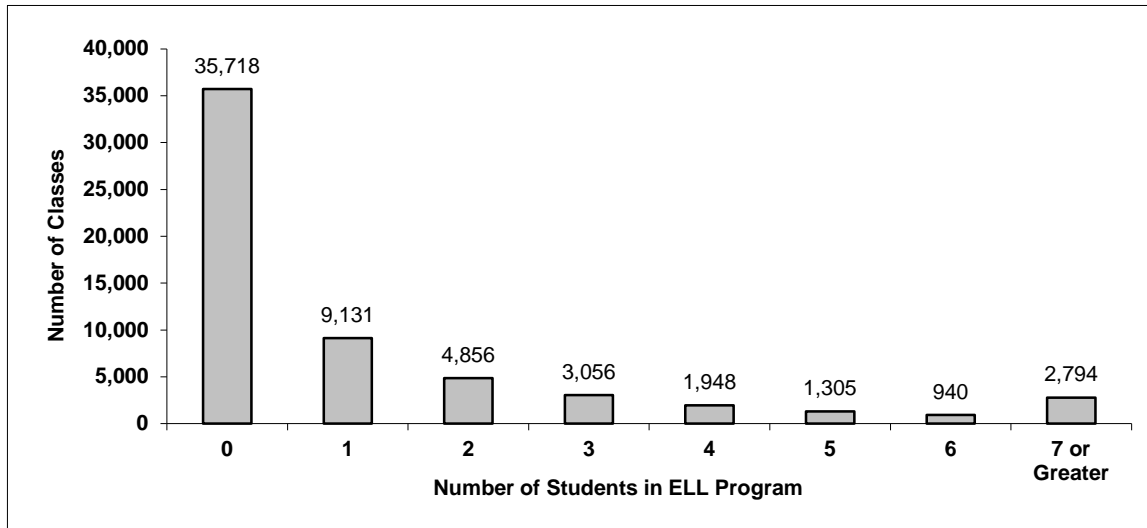
Province - English Language Learners (ELL)

Source: Class size data collection (as of October 31) from BC public schools.

Grades K-3 - Number of Classes in Province with 'X' Number of ELL



Grades 4-12 - Number of Classes in Province with 'X' Number of ELL



Province: Average Class Size by School District

Source: Class size data collection (as of October 31) from BC public schools.

	District	Kindergarten	Grade 1 - 3	Grade 4 - 7	Grade 8 - 12
005	Southeast Kootenay	17.8	21.8	24.5	20.5
006	Rocky Mountain	19.0	21.0	24.3	23.2
008	Kootenay Lake	19.9	21.6	26.1	20.4
010	Arrow Lakes	16.5	14.9	18.2	14.9
019	Revelstoke	17.5	21.2	23.9	17.1
020	Kootenay-Columbia	19.9	20.7	26.2	23.6
022	Vernon	20.2	21.8	27.0	22.3
023	Central Okanagan	20.5	22.8	25.9	23.2
027	Cariboo-Chilcotin	18.7	20.2	22.0	20.4
028	Quesnel	20.0	21.5	24.7	23.3
033	Chilliwack	19.4	22.3	25.8	22.7
034	Abbotsford	20.4	22.5	27.6	25.1
035	Langley	20.9	22.6	27.6	23.8
036	Surrey	19.6	21.9	27.0	23.7
037	Delta	20.1	22.3	27.6	22.1
038	Richmond	19.9	22.2	27.5	24.3
039	Vancouver	19.4	21.7	26.1	23.8
040	New Westminster	21.1	22.5	26.3	24.1
041	Burnaby	19.2	21.4	25.9	24.8
042	Maple Ridge-Pitt Meadows	19.9	22.2	26.7	25.8
043	Coquitlam	20.3	22.4	28.6	26.2
044	North Vancouver	20.0	21.9	27.3	24.1
045	West Vancouver	19.0	21.7	26.6	25.2
046	Sunshine Coast	18.6	21.3	21.5	20.3
047	Powell River	19.5	21.0	26.2	23.9
048	Sea to Sky	19.8	21.5	25.1	24.2
049	Central Coast	14.0	15.9	17.4	11.5
050	Haida Gwaii	15.1	13.4	18.2	15.2
051	Boundary	18.0	19.8	21.9	19.7
052	Prince Rupert	18.8	21.3	18.9	21.0
053	Okanagan Similkameen	17.7	22.0	24.9	19.5
054	Bulkley Valley	19.5	20.7	23.7	23.1
057	Prince George	19.1	20.9	26.1	22.4
058	Nicola-Similkameen	18.1	20.5	23.7	16.6
059	Peace River South	19.5	19.9	22.0	23.0
060	Peace River North	20.7	21.7	25.1	22.8
061	Greater Victoria	19.9	21.5	26.1	24.5
062	Sooke	19.2	22.4	27.4	24.7
063	Saanich	20.7	22.6	28.4	25.8
064	Gulf Islands	18.7	20.6	23.6	21.7
067	Okanagan Skaha	17.8	21.1	25.0	24.9
068	Nanaimo-Ladysmith	20.2	22.1	27.1	26.3
069	Qualicum	20.2	21.4	25.7	23.9
070	Alberni	20.3	22.2	26.9	20.9
071	Comox Valley	20.1	21.7	26.4	22.4
072	Campbell River	19.8	22.2	26.5	25.7
073	Kamloops/Thompson	19.7	21.6	26.3	23.1
074	Gold Trail	17.4	20.0	21.0	14.2
075	Mission	20.6	22.4	27.8	25.3
078	Fraser-Cascade	18.9	20.7	24.6	18.7
079	Cowichan Valley	20.7	22.6	28.4	24.8
081	Fort Nelson	20.1	20.9	23.6	17.4
082	Coast Mountains	16.8	19.5	23.6	20.8
083	North Okanagan-Shuswap	20.1	22.3	26.6	20.7
084	Vancouver Island West	15.3	13.2	12.6	12.1
085	Vancouver Island North	17.3	19.3	22.6	19.7
087	Stikine	9.1	10.6	12.4	12.1
091	Nechako Lakes	17.7	20.9	23.4	18.9
092	Nisga'a	13.6	15.5	15.3	11.0
093	Conseil scolaire francophone	17.8	20.0	20.8	17.7
	Provincial Average	19.7	21.8	26.0	23.4

Glossary

Term	Definition / Notes
English Language Learners (ELL)	<ul style="list-style-type: none">• A program offered to students whose primary language(s) is/are other than English, and who may require additional services.
Grade	<ul style="list-style-type: none">• The assigned grade of a student on October 31.
K	<ul style="list-style-type: none">• Kindergarten
Number of Students	<ul style="list-style-type: none">• Student population is calculated by headcount.
Student	<ul style="list-style-type: none">• A person enrolled in a BC school. Student populations are calculated by headcount. Students include all adult and school-aged persons who are working toward a certificate of graduation.
Student Entitled to an Individual Education Plan	<ul style="list-style-type: none">• A student for whom an Individual Education Plan (IEP) must be designed under the Individual Education Plan order, Ministerial Order 638/95.