

# Overview of Class Size and Composition in British Columbia Public Schools 2015/16

## School District 085 Vancouver Island North

These class size data are current as of October 31, 2015 and have been verified by school districts.

---

**PLEASE NOTE**

The Ministry makes small and continuous improvements to the quality of its data. Sometimes these changes result in differences from previously published reports. The data in this report are the most accurate data available at time of publication.

Ministry reports are available at <http://www.bced.gov.bc.ca/reporting/>

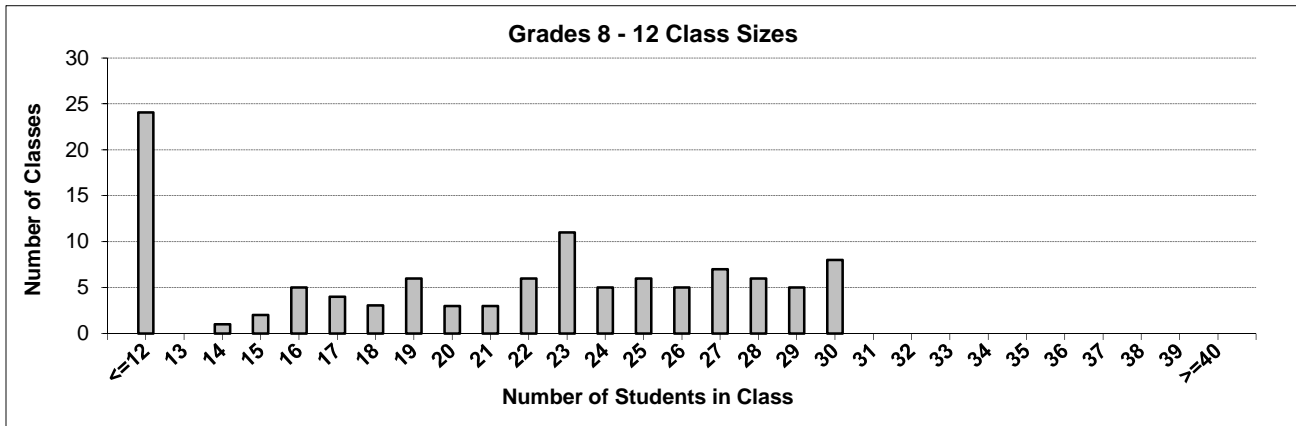
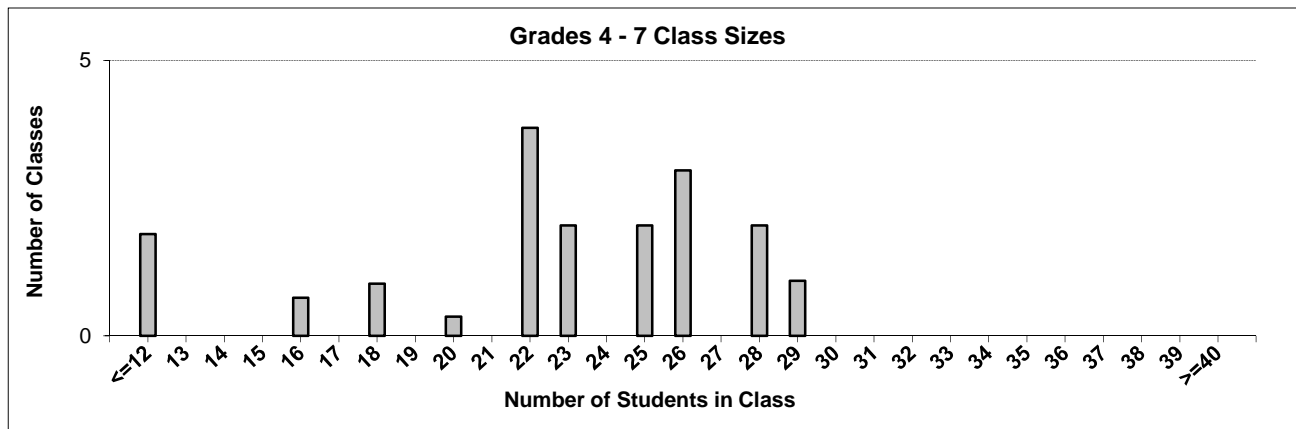
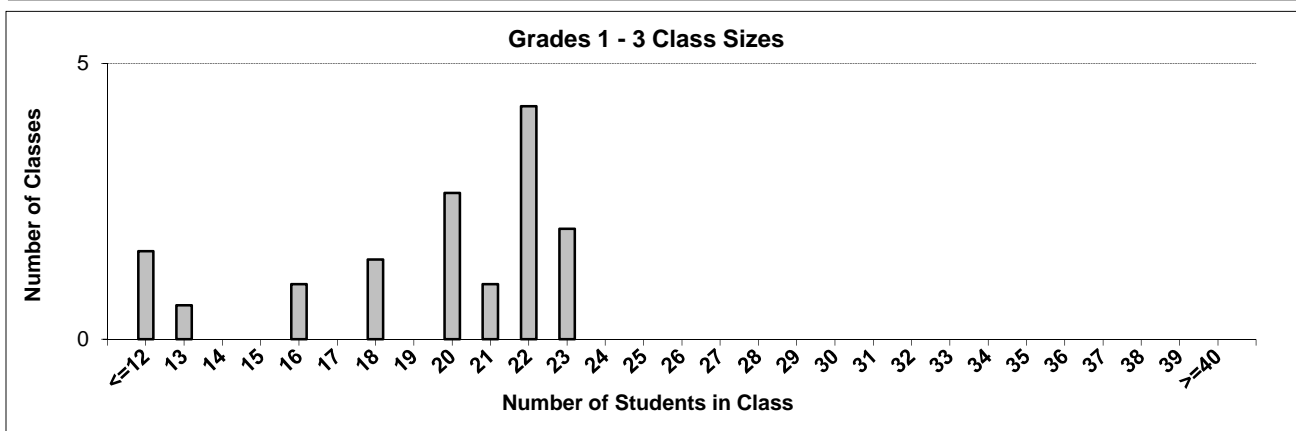
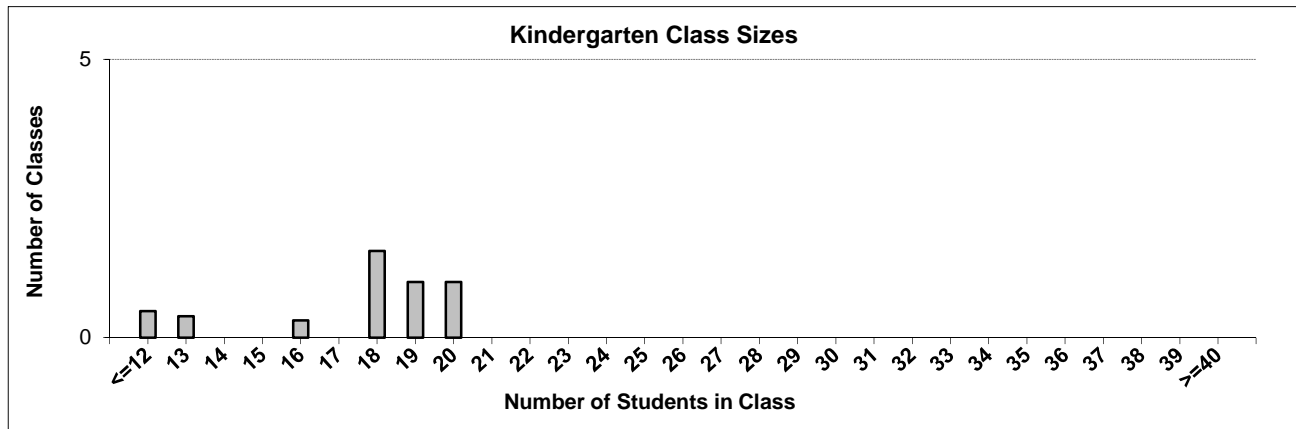
Contact the Analysis and Reporting Unit at [educ.reportingunit@gov.bc.ca](mailto:educ.reportingunit@gov.bc.ca)

---

# District Class Sizes

## 085 Vancouver Island North

Source: Class size data collection (as of October 31) from BC public schools.



---

## District - Average Class Size

---

### 085 Vancouver Island North

Source: Class size data collection (as of October 31) from BC public schools.

District - Average Class Size	Kindergarten	Grade 1 - 3	Grade 4 - 7	Grade 8 - 12
	17.3	19.3	22.6	19.7

Province - Average Class Size	Kindergarten	Grade 1 - 3	Grade 4 - 7	Grade 8 - 12
	19.7	21.8	26.0	23.4

Number of Reported Classes with Assigned Education Assistants	75
---------------------------------------------------------------	----

Number of Reported Schools in District	10
----------------------------------------	----

Number of Reported Classes in District	147
----------------------------------------	-----

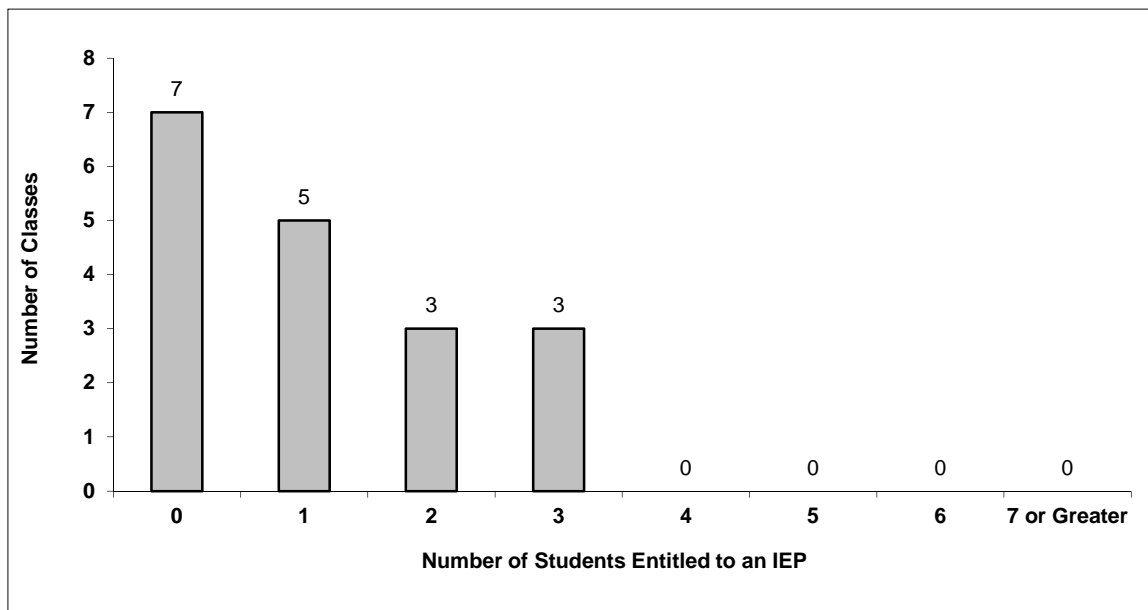
Number of Reported Classes in District with more than 30 Students	0
-------------------------------------------------------------------	---

# District - Students Entitled to an Individual Education Plan (IEP)

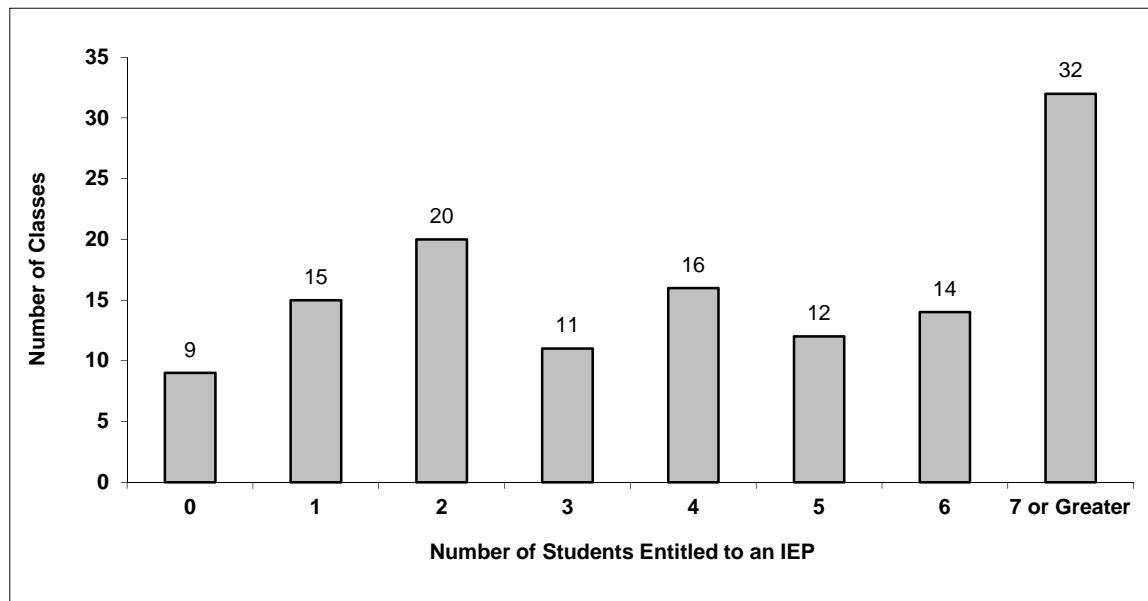
## 085 Vancouver Island North

Source: Class size data collection (as of October 31) from BC public schools.

Grades K-3 - Number of Classes in District with 'X' Number of Students Entitled to an IEP



Grades 4-12 - Number of Classes in District with 'X' Number of Students Entitled to an IEP

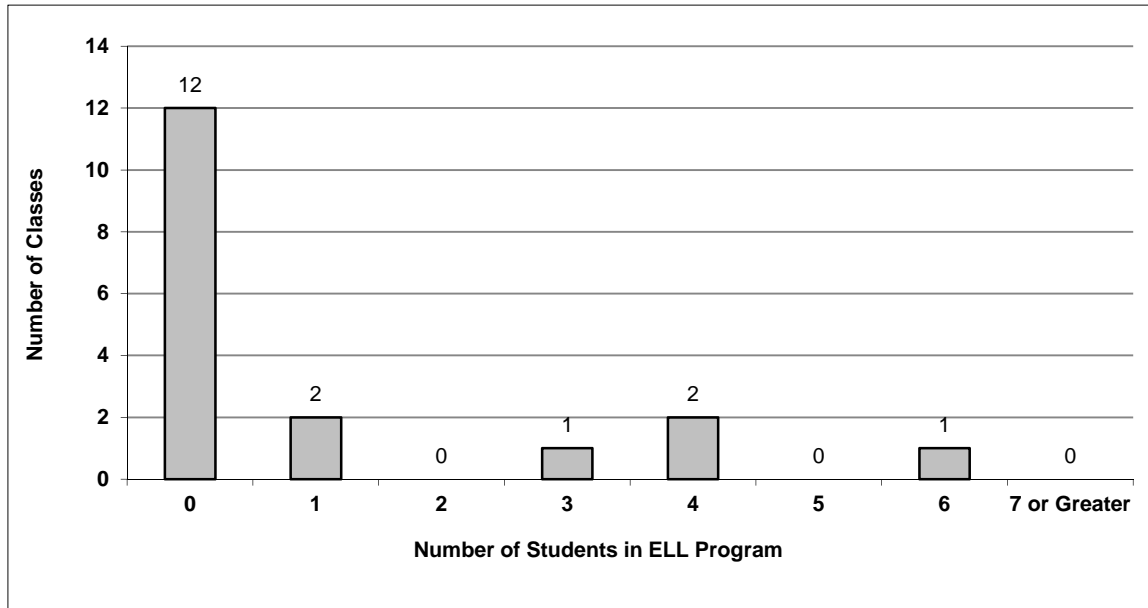


# District - English Language Learners (ELL)

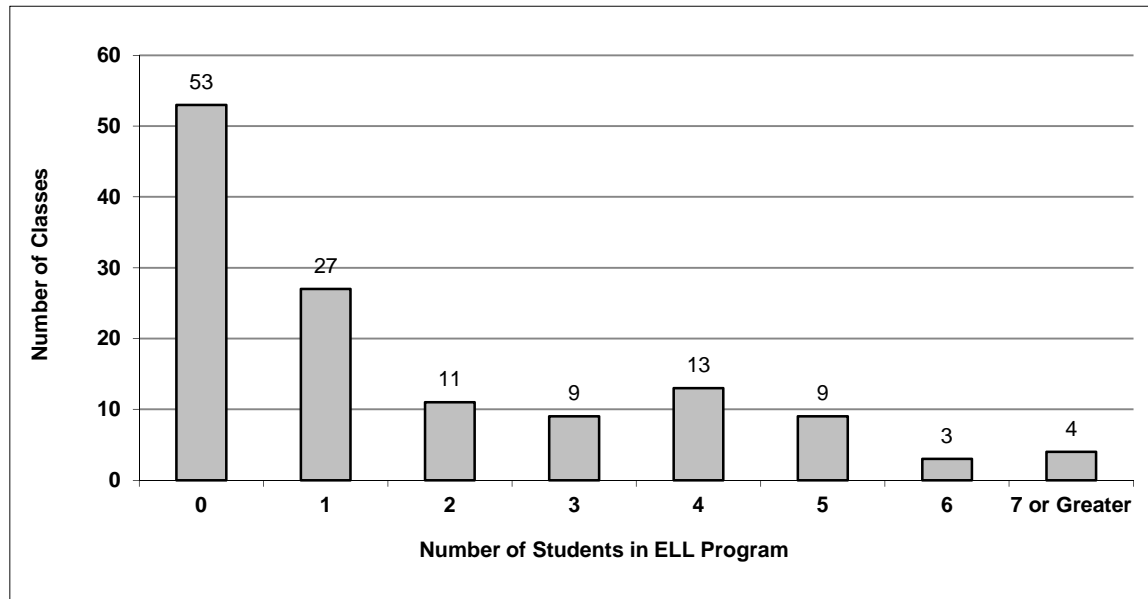
## 085 Vancouver Island North

Source: Class size data collection (as of October 31) from BC public schools.

Grades K-3 - Number of Classes in District with 'X' Number of ELL



Grades 4-12 - Number of Classes in District with 'X' Number of ELL



## 085 Vancouver Island North - Average Class Size by School

Source: Class size data collection (as of October 31) from BC public schools.

Ministry Code	School Name	Kindergarten	Grade 1 - 3	Grade 4 - 7	Grade 8 - 12
08585001	A J Elliott Elementary	18.0	18.0	22.0	-
08585008	Alert Bay Elementary	13.0	14.0	20.1	-
08585029	Cheslakees Elementary	18.5	-	-	-
08585023	Eagle View Elementary	20.0	22.0	27.2	-
08585017	Fort Rupert Elementary	16.0	17.9	21.5	-
08585018	North Island Secondary	-	-	-	19.3
08585026	Port Hardy Secondary	-	-	-	20.3
08585020	Sea View Elem-Jr Secondary	14.4	14.4	14.4	14.4
08585028	Sunset Elementary	-	21.3	24.1	-
08585016	Woss Lake Elementary	7.0	7.0	7.0	-

---

## Glossary

---

Term	Definition / Notes
<b>English Language Learners (ELL)</b>	• A program offered to students whose primary language(s) is/are other than English, and who may require additional services.
<b>Grade</b>	• The assigned grade of a student on October 31.
<b>K</b>	• Kindergarten
<b>Number of Students</b>	• Student population is calculated by headcount.
<b>Student</b>	• A person enrolled in a BC school. Student populations are calculated by headcount. Students include all adult and school-aged persons who are working toward a certificate of graduation.
<b>Student Entitled to an Individual Education Plan</b>	• A student for whom an Individual Education Plan (IEP) must be designed under the Individual Education Plan order, Ministerial Order 638/95.