

# **Overview of Class Size and Composition in British Columbia Public Schools 2015/16**

## **School District 082 Coast Mountains**

These class size data are current as of October 31, 2015 and have been verified by school districts.

---

### **PLEASE NOTE**

The Ministry makes small and continuous improvements to the quality of its data. Sometimes these changes result in differences from previously published reports. The data in this report are the most accurate data available at time of publication.

Ministry reports are available at <http://www.bced.gov.bc.ca/reporting/>

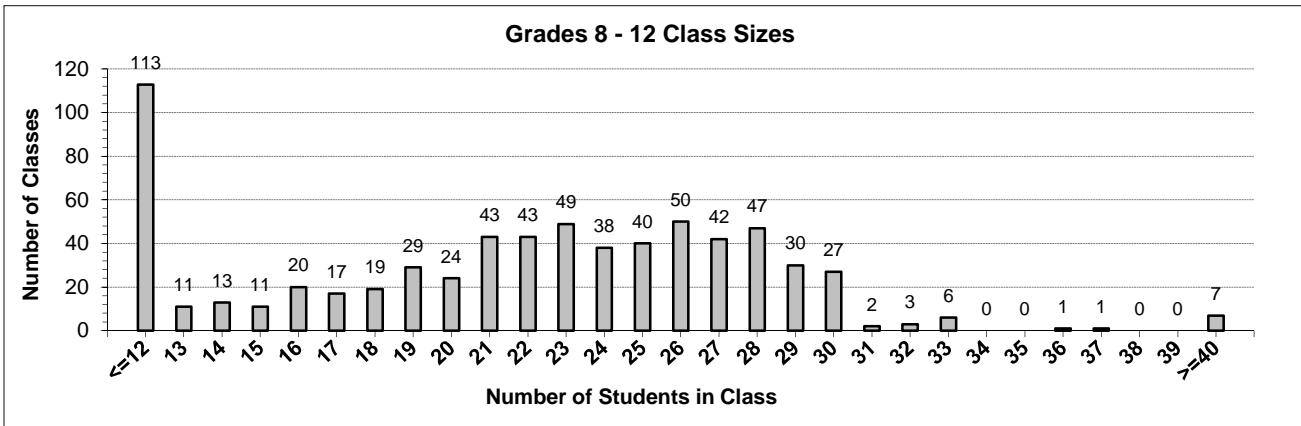
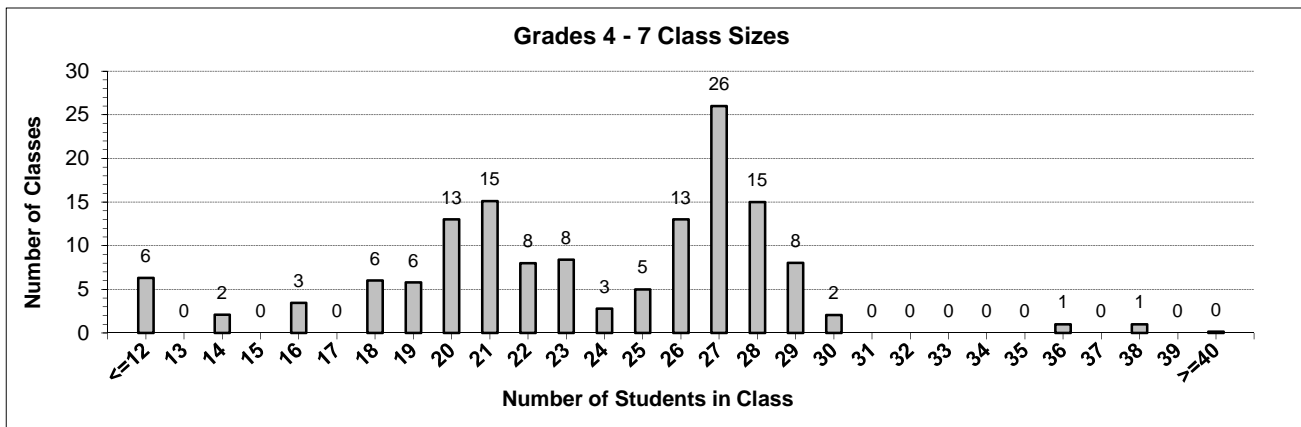
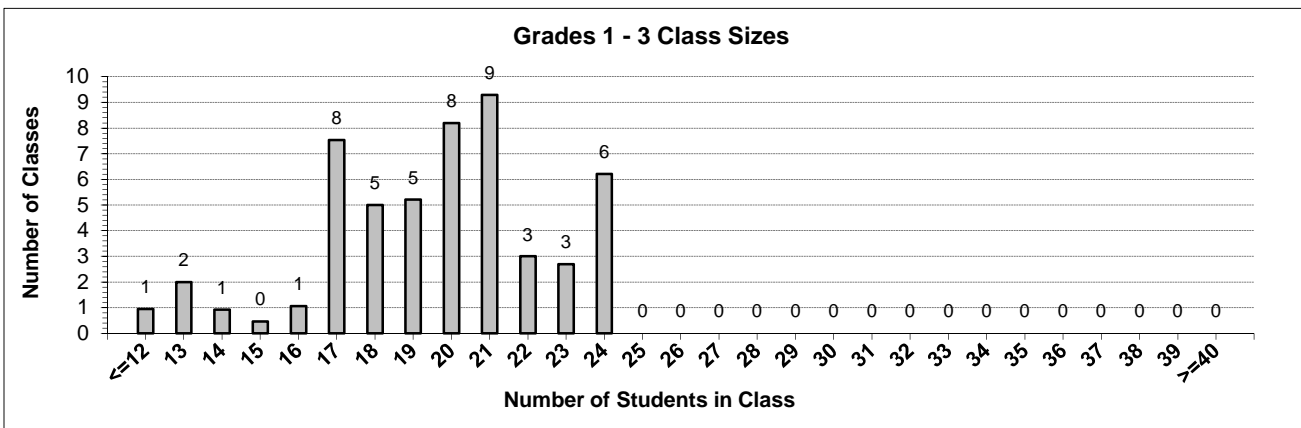
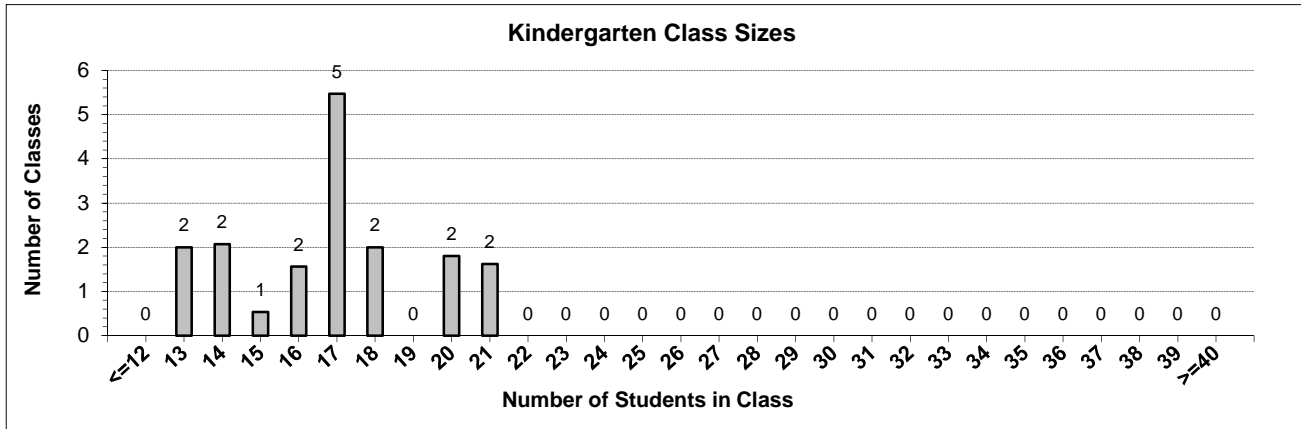
Contact the Analysis and Reporting Unit at [educ.reportingunit@gov.bc.ca](mailto:educ.reportingunit@gov.bc.ca)

---

# District Class Sizes

## 082 Coast Mountains

Source: Class size data collection (as of October 31) from BC public schools.



---

## District - Average Class Size

---

### 082 Coast Mountains

Source: Class size data collection (as of October 31) from BC public schools.

District - Average Class Size	Kindergarten	Grade 1 - 3	Grade 4 - 7	Grade 8 - 12
	16.8	19.5	23.6	20.8

Province - Average Class Size	Kindergarten	Grade 1 - 3	Grade 4 - 7	Grade 8 - 12
	19.7	21.8	26.0	23.4

Number of Reported Classes with Assigned Education Assistants	231
---	-----

Number of Reported Schools in District	17
--	----

Number of Reported Classes in District	897
--	-----

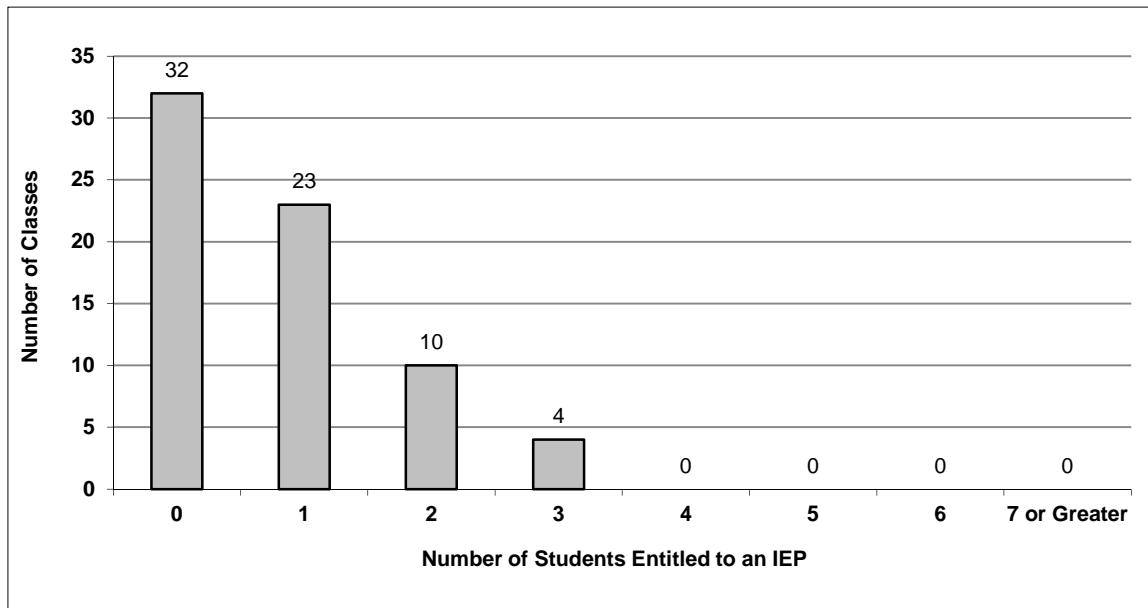
Number of Reported Classes in District with more than 30 Students	22
---	----

# District - Students Entitled to an Individual Education Plan (IEP)

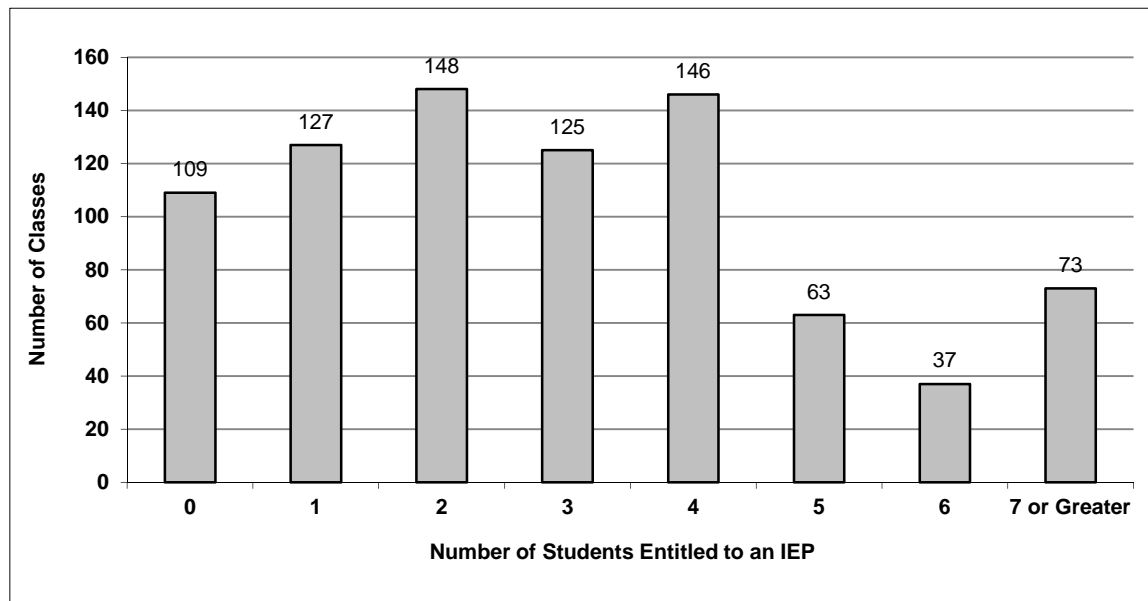
## 082 Coast Mountains

Source: Class size data collection (as of October 31) from BC public schools.

Grades K-3 - Number of Classes in District with 'X' Number of Students Entitled to an IEP



Grades 4-12 - Number of Classes in District with 'X' Number of Students Entitled to an IEP

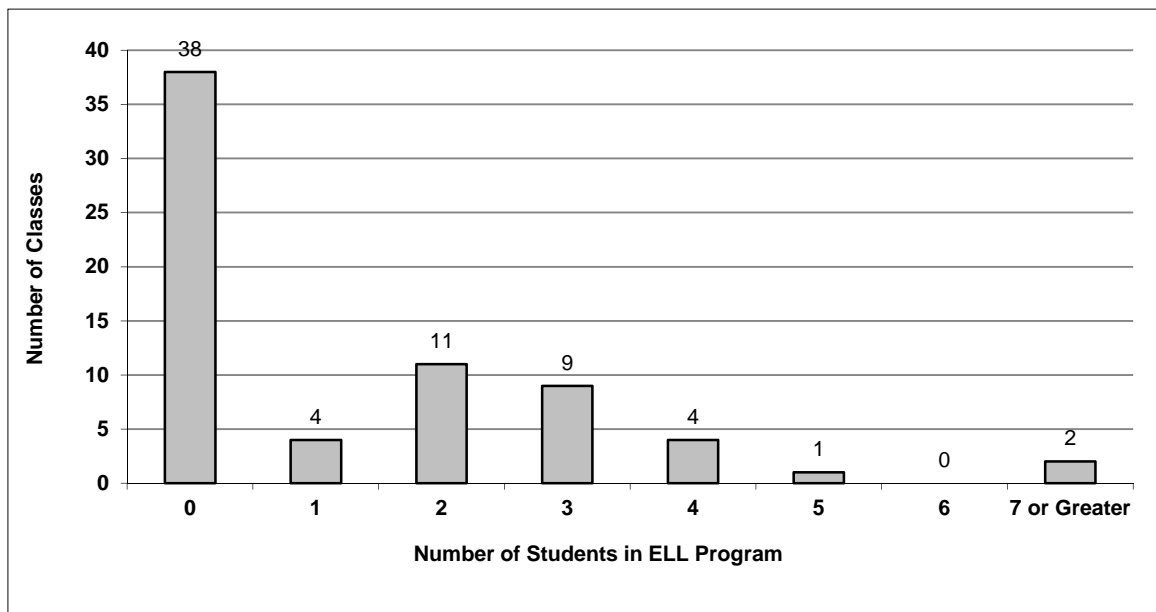


# District - English Language Learners (ELL)

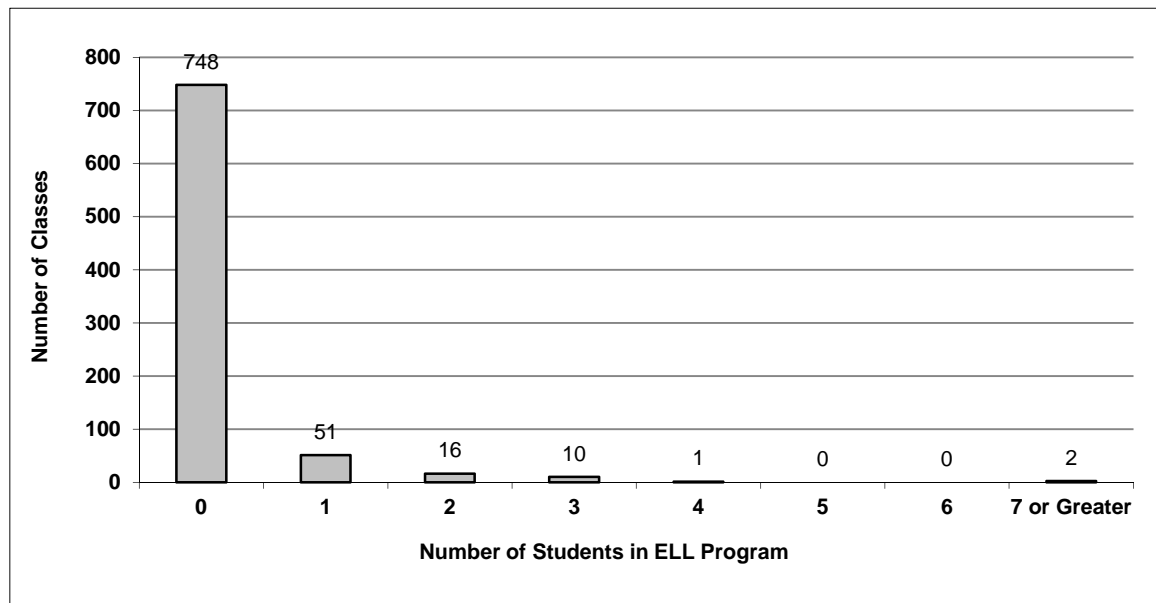
## 082 Coast Mountains

Source: Class size data collection (as of October 31) from BC public schools.

Grades K-3 - Number of Classes in District with 'X' Number of ELL



Grades 4-12 - Number of Classes in District with 'X' Number of ELL



## 082 Coast Mountains - Average Class Size by School

Source: Class size data collection (as of October 31) from BC public schools.

Ministry Code	School Name	Kindergarten	Grade 1 - 3	Grade 4 - 7	Grade 8 - 12
08288028	Bear Valley School	13.0	11.7	16.0	10.3
08288024	Caledonia Secondary	-	-	-	21.0
08288013	Cassie Hall Elementary	16.0	20.0	25.1	-
08288020	Ecole Mountainview	16.5	20.1	23.4	-
08288006	Hazelton Secondary	-	-	-	20.8
08280004	Kildala Elementary	19.5	19.9	20.3	-
08288030	Kitwanga Elementary	14.0	17.0	19.0	-
08288018	Majagaleehi Gali Aks Elementary	14.0	18.7	24.0	-
08282039	Mount Elizabeth Middle/Secondary	-	-	27.7	19.9
08282040	NW Regional Trades & Training Centre	-	-	-	30.0
08280001	Nechako Elementary	17.5	19.7	21.7	-
08288008	New Hazelton Elementary	20.0	20.3	28.7	-
08282038	Skeena Middle	-	-	23.5	22.0
08288016	Suwilaawks Community School	13.5	20.6	24.2	-
08288014	Thornhill Elementary	-	-	26.2	-
08288022	Thornhill Primary	18.0	19.2	-	-
08288012	Uplands Elementary	17.7	21.7	27.0	-

---

## Glossary

---

Term	Definition / Notes
English Language Learners (ELL)	<ul style="list-style-type: none"><li>• A program offered to students whose primary language(s) is/are other than English, and who may require additional services.</li></ul>
Grade	<ul style="list-style-type: none"><li>• The assigned grade of a student on October 31.</li></ul>
K	<ul style="list-style-type: none"><li>• Kindergarten</li></ul>
Number of Students	<ul style="list-style-type: none"><li>• Student population is calculated by headcount.</li></ul>
Student	<ul style="list-style-type: none"><li>• A person enrolled in a BC school. Student populations are calculated by headcount. Students include all adult and school-aged persons who are working toward a certificate of graduation.</li></ul>
Student Entitled to an Individual Education Plan	<ul style="list-style-type: none"><li>• A student for whom an Individual Education Plan (IEP) must be designed under the Individual Education Plan order, Ministerial Order 638/95.</li></ul>