

Overview of Class Size and Composition in British Columbia Public Schools 2015/16

School District 075 Mission

These class size data are current as of October 31, 2015 and have been verified by school districts.



Ministry of
Education

December 2015
Analysis and Reporting Unit

PLEASE NOTE

The Ministry makes small and continuous improvements to the quality of its data. Sometimes these changes result in differences from previously published reports. The data in this report are the most accurate data available at time of publication.

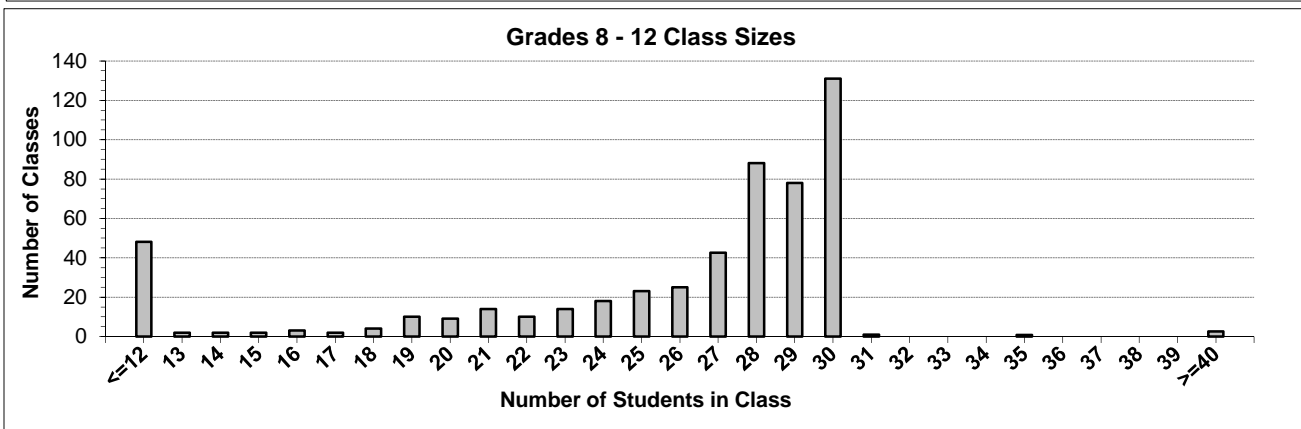
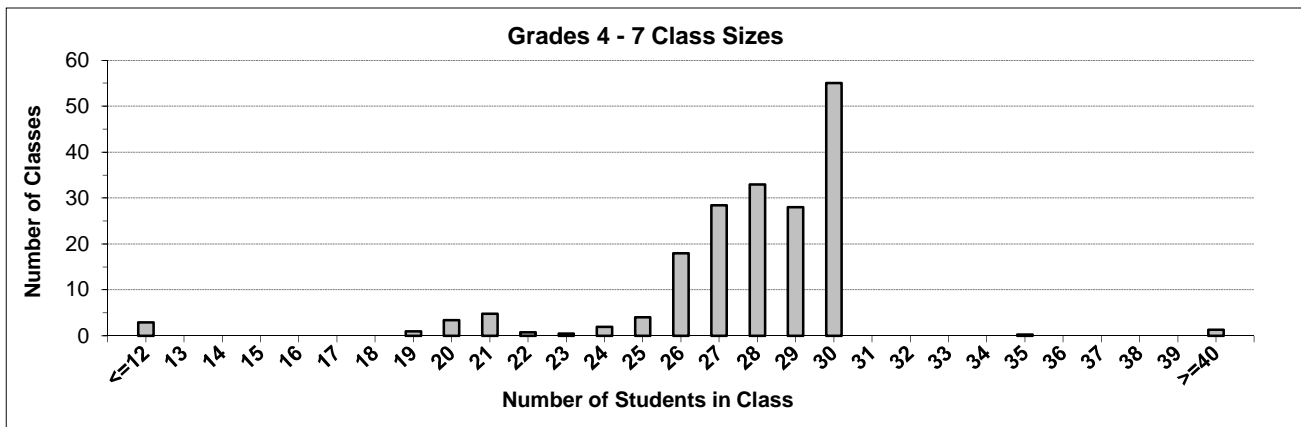
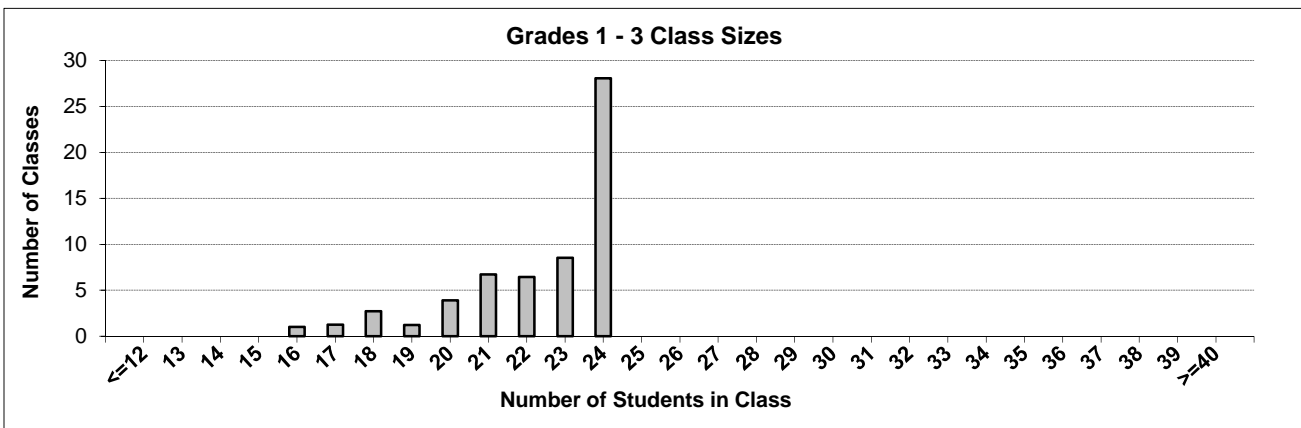
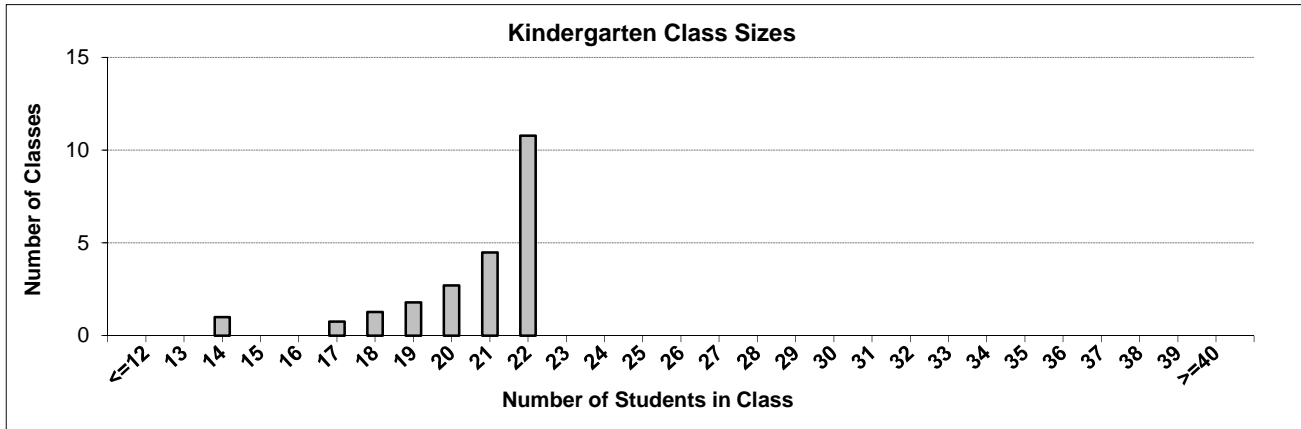
Ministry reports are available at <http://www.bced.gov.bc.ca/reporting/>

Contact the Analysis and Reporting Unit at educ.reportingunit@gov.bc.ca

District Class Sizes

075 Mission

Source: Class size data collection (as of October 31) from BC public schools.



District - Average Class Size

075 Mission

Source: Class size data collection (as of October 31) from BC public schools.

District - Average Class Size	Kindergarten	Grade 1 - 3	Grade 4 - 7	Grade 8 - 12
	20.6	22.4	27.8	25.3

Province - Average Class Size	Kindergarten	Grade 1 - 3	Grade 4 - 7	Grade 8 - 12
	19.7	21.8	26.0	23.4

Number of Reported Classes with Assigned Education Assistants	369
---	-----

Number of Reported Schools in District	15
--	----

Number of Reported Classes in District	796
--	-----

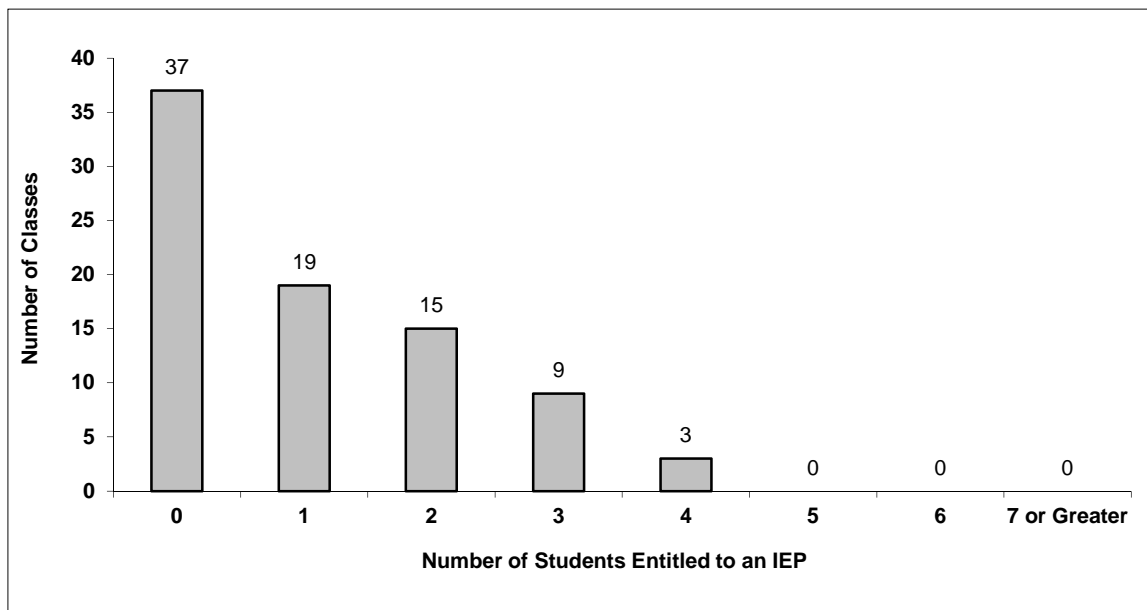
Number of Reported Classes in District with more than 30 Students	6
---	---

District - Students Entitled to an Individual Education Plan (IEP)

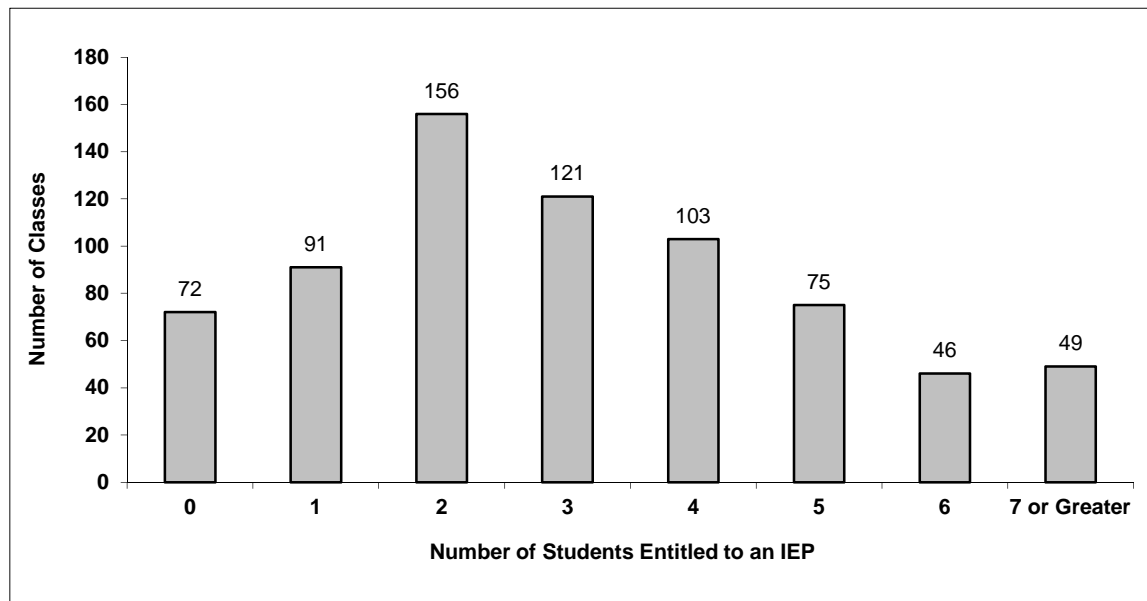
075 Mission

Source: Class size data collection (as of October 31) from BC public schools.

Grades K-3 - Number of Classes in District with 'X' Number of Students Entitled to an IEP



Grades 4-12 - Number of Classes in District with 'X' Number of Students Entitled to an IEP

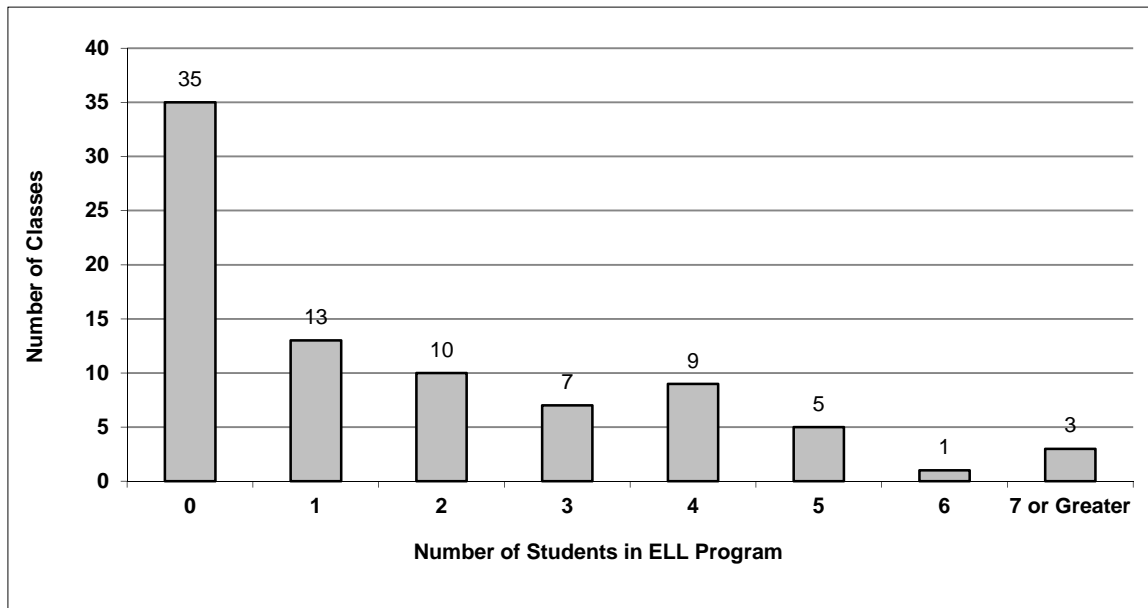


District - English Language Learners (ELL)

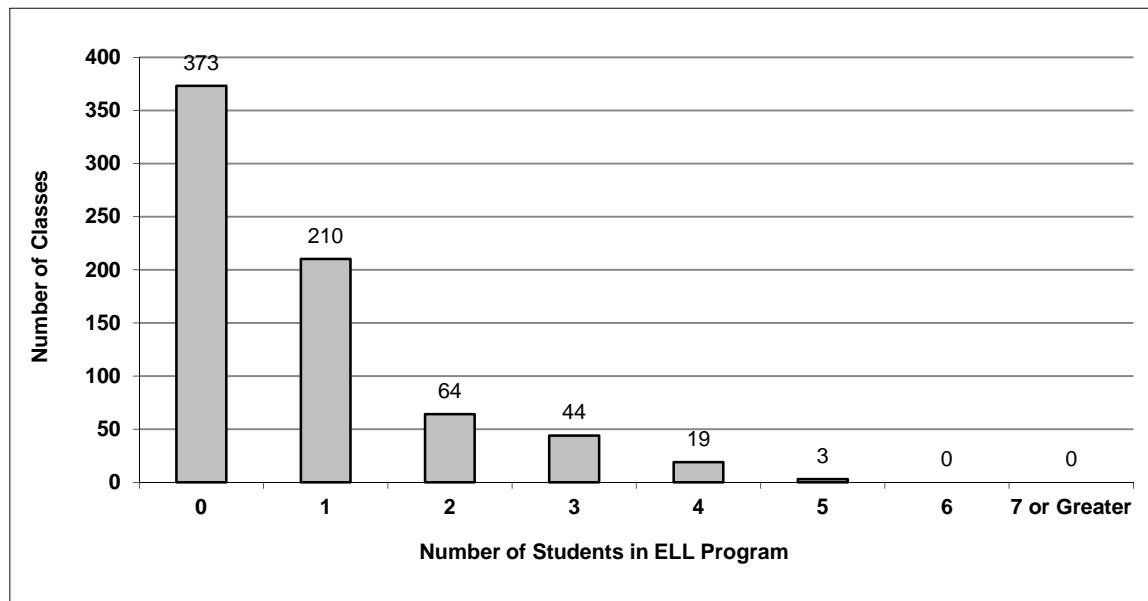
075 Mission

Source: Class size data collection (as of October 31) from BC public schools.

Grades K-3 - Number of Classes in District with 'X' Number of ELL



Grades 4-12 - Number of Classes in District with 'X' Number of ELL



075 Mission - Average Class Size by School

Source: Class size data collection (as of October 31) from BC public schools.

Ministry Code	School Name	Kindergarten	Grade 1 - 3	Grade 4 - 7	Grade 8 - 12
07575028	Albert McMahon Elementary	21.0	23.4	29.5	-
07575023	Cherry Hill Elementary	21.4	23.3	27.8	-
07575029	Christine Morrison Elementary	21.3	22.2	26.4	-
07575032	Deroche Elementary	14.0	20.6	19.3	-
07575006	Dewdney Elementary	18.0	17.5	21.0	-
07575036	Ecole Heritage Park Middle School	-	-	28.4	24.4
07575015	Edwin S Richards Elementary	22.0	22.9	29.2	-
07575001	Hatzic Elementary	21.5	23.6	28.6	-
07575035	Hatzic Middle School	-	-	27.5	28.0
07575027	Hillside Traditional Academy	20.8	23.1	28.7	-
07575007	Mission Central Elementary	20.3	21.8	24.7	-
07575014	Mission Senior Secondary	-	-	-	24.5
07575019	Silverdale Elementary	17.0	17.9	26.5	-
07575018	West Heights Elementary	20.0	23.2	28.3	-
07575020	Windebank Elementary	22.0	21.9	27.5	-

Glossary

Term	Definition / Notes
English Language Learners (ELL)	• A program offered to students whose primary language(s) is/are other than English, and who may require additional services.
Grade	• The assigned grade of a student on October 31.
K	• Kindergarten
Number of Students	• Student population is calculated by headcount.
Student	• A person enrolled in a BC school. Student populations are calculated by headcount. Students include all adult and school-aged persons who are working toward a certificate of graduation.
Student Entitled to an Individual Education Plan	• A student for whom an Individual Education Plan (IEP) must be designed under the Individual Education Plan order, Ministerial Order 638/95.