

# Overview of Class Size and Composition in British Columbia Public Schools 2015/16

## School District 072 Campbell River

These class size data are current as of October 31, 2015 and have been verified by school districts.



Ministry of  
Education

December 2015  
Analysis and Reporting Unit

---

**PLEASE NOTE**

The Ministry makes small and continuous improvements to the quality of its data. Sometimes these changes result in differences from previously published reports. The data in this report are the most accurate data available at time of publication.

Ministry reports are available at <http://www.bced.gov.bc.ca/reporting/>

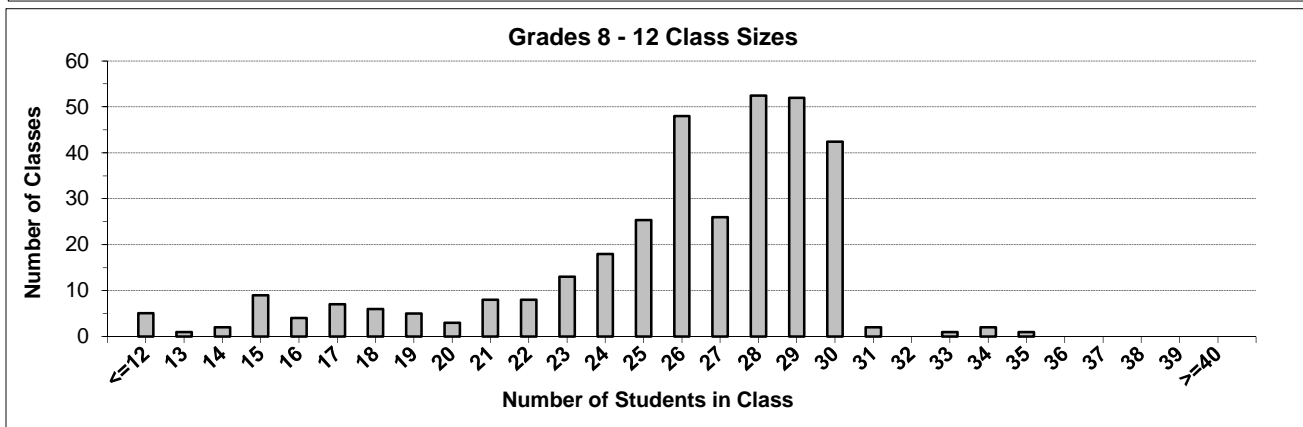
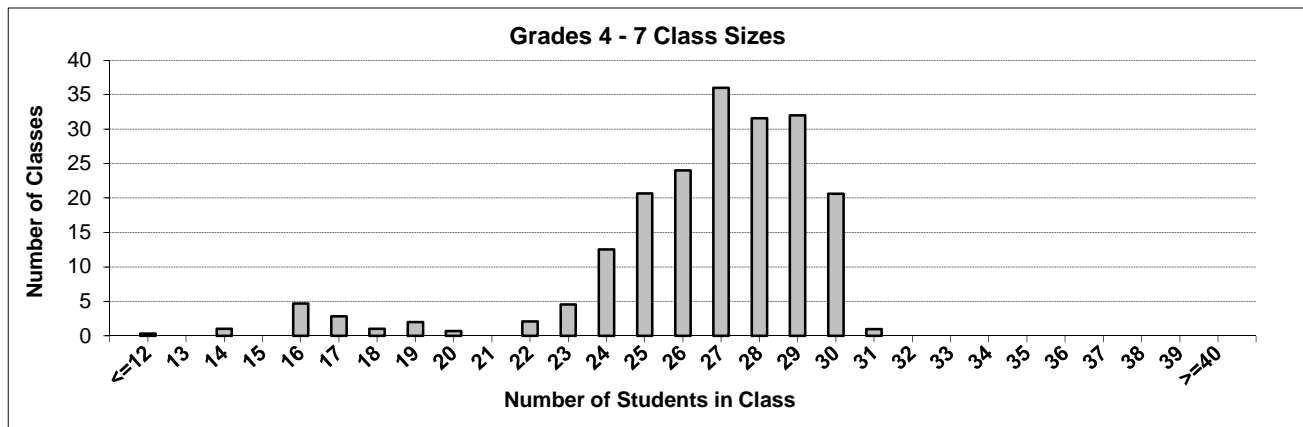
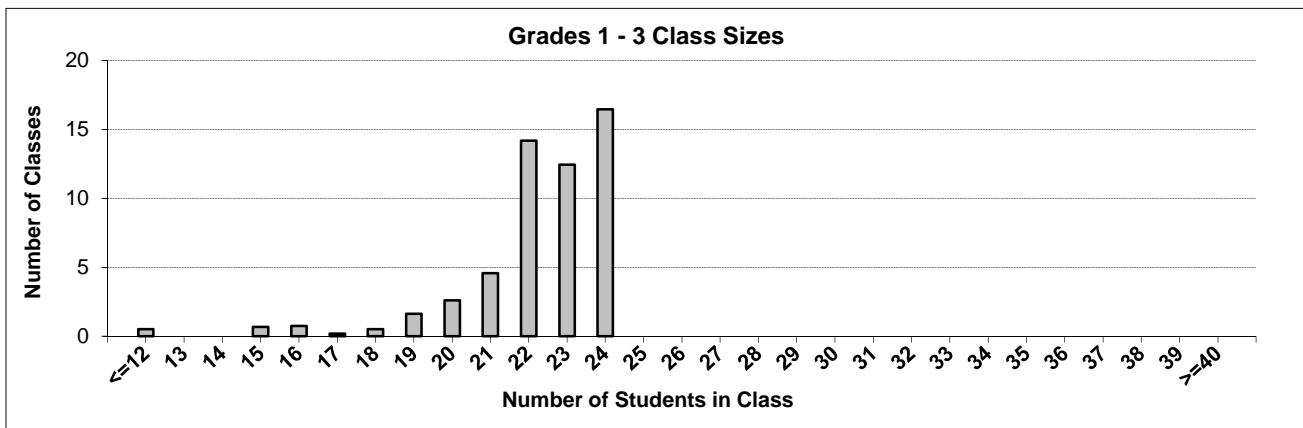
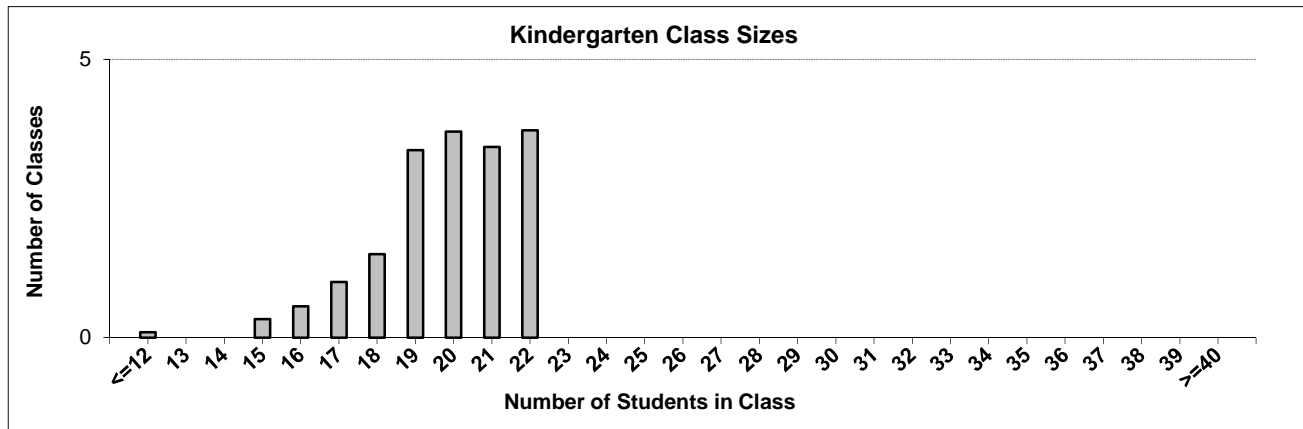
Contact the Analysis and Reporting Unit at [educ.reportingunit@gov.bc.ca](mailto:educ.reportingunit@gov.bc.ca)

---

# District Class Sizes

## 072 Campbell River

Source: Class size data collection (as of October 31) from BC public schools.



---

## District - Average Class Size

---

### 072 Campbell River

Source: Class size data collection (as of October 31) from BC public schools.

District - Average Class Size	Kindergarten	Grade 1 - 3	Grade 4 - 7	Grade 8 - 12
	19.8	22.2	26.5	25.7

Province - Average Class Size	Kindergarten	Grade 1 - 3	Grade 4 - 7	Grade 8 - 12
	19.7	21.8	26.0	23.4

Number of Reported Classes with Assigned Education Assistants	250
---	-----

Number of Reported Schools in District	19
--	----

Number of Reported Classes in District	611
--	-----

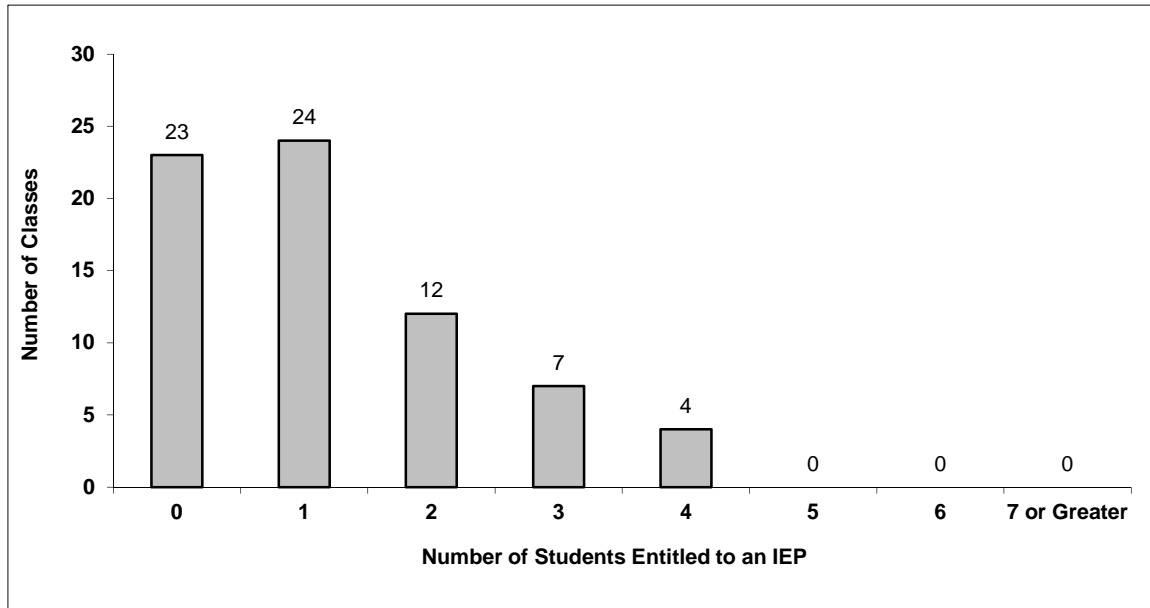
Number of Reported Classes in District with more than 30 Students	7
---	---

# District - Students Entitled to an Individual Education Plan (IEP)

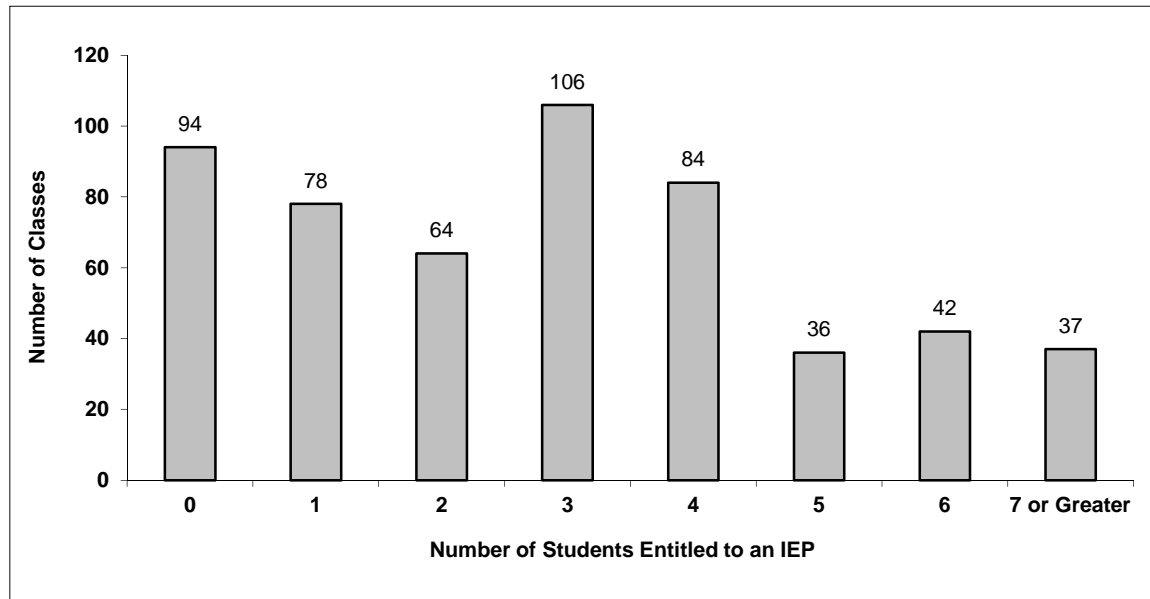
## 072 Campbell River

Source: Class size data collection (as of October 31) from BC public schools.

Grades K-3 - Number of Classes in District with 'X' Number of Students Entitled to an IEP



Grades 4-12 - Number of Classes in District with 'X' Number of Students Entitled to an IEP

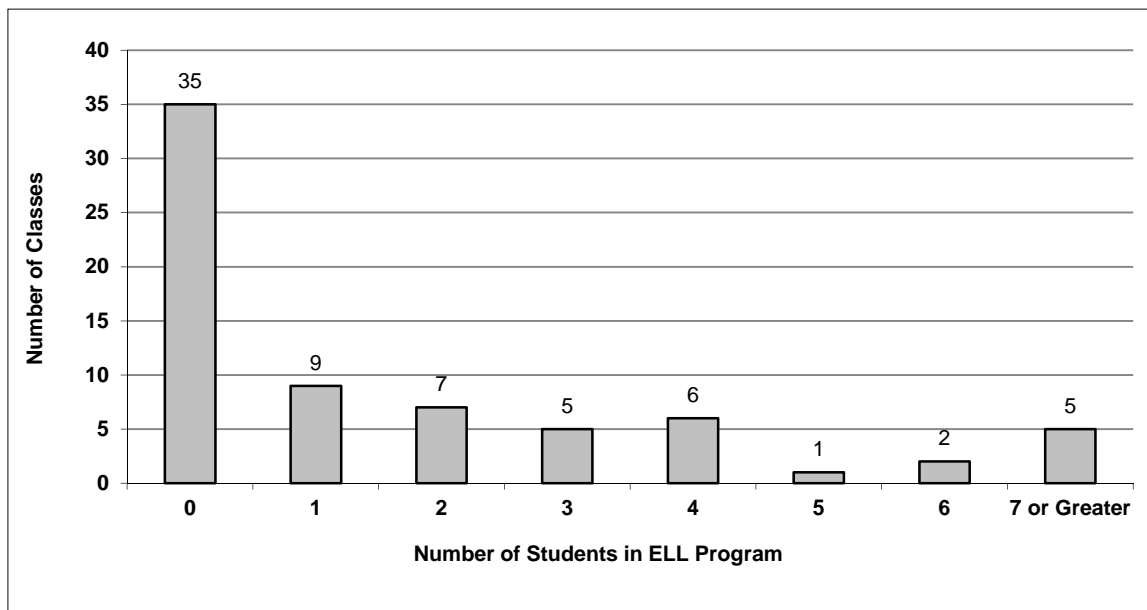


## District - English Language Learners (ELL)

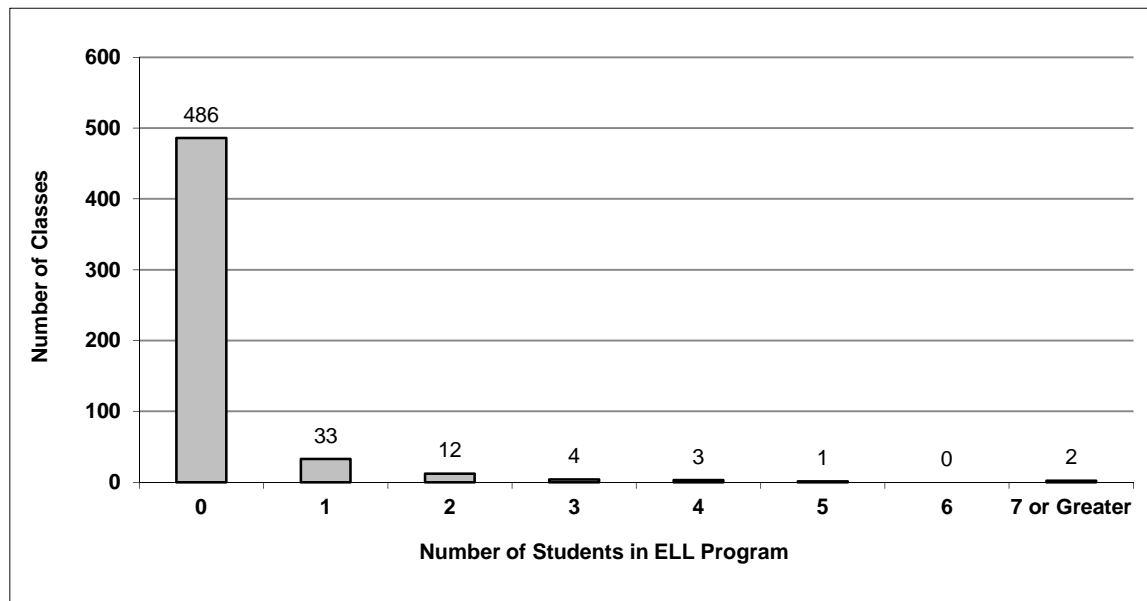
### 072 Campbell River

Source: Class size data collection (as of October 31) from BC public schools.

Grades K-3 - Number of Classes in District with 'X' Number of ELL



Grades 4-12 - Number of Classes in District with 'X' Number of ELL



## 072 Campbell River - Average Class Size by School

Source: Class size data collection (as of October 31) from BC public schools.

Ministry Code	School Name	Kindergarten	Grade 1 - 3	Grade 4 - 7	Grade 8 - 12
07272010	Carihi Secondary	-	-	-	24.8
07272029	Cedar Elementary	18.7	21.8	24.0	-
07272017	Cortes Island Elem-Jr Secondary	16.0	16.0	20.5	25.0
07272033	Discovery Passage Elementary	21.0	23.0	24.0	-
07272014	Ecole Phoenix Middle	-	-	26.1	27.4
07272097	Ecole Willow Point Elementary	20.6	22.2	26.8	-
07272031	Ecole des Deux Mondes Elementary	-	21.7	29.0	-
07272046	Georgia Park Elementary	19.5	22.3	26.3	-
07272061	Ocean Grove Elementary	21.2	22.8	23.0	-
07272062	Oyster River Elementary	22.0	23.6	24.0	-
07272066	Penfield Elementary	22.0	23.8	28.3	-
07272065	Pinecrest Elementary	20.0	22.5	24.0	-
07272069	Quadra Elementary	17.0	20.4	21.8	-
07272032	Ripple Rock Elementary	18.6	22.0	27.5	-
07272078	Sandowne Elementary	21.4	23.7	28.4	-
07272119	Sayward Elem-Jr Secondary	15.0	15.4	17.0	-
07272016	Southgate Middle School	-	-	28.3	26.4
07272085	Surge Narrows Elementary	10.0	10.0	10.0	10.0
07272012	Timberline Secondary School	-	-	-	25.7

---

## Glossary

---

Term	Definition / Notes
English Language Learners (ELL)	<ul style="list-style-type: none"><li>• A program offered to students whose primary language(s) is/are other than English, and who may require additional services.</li></ul>
Grade	<ul style="list-style-type: none"><li>• The assigned grade of a student on October 31.</li></ul>
K	<ul style="list-style-type: none"><li>• Kindergarten</li></ul>
Number of Students	<ul style="list-style-type: none"><li>• Student population is calculated by headcount.</li></ul>
Student	<ul style="list-style-type: none"><li>• A person enrolled in a BC school. Student populations are calculated by headcount. Students include all adult and school-aged persons who are working toward a certificate of graduation.</li></ul>
Student Entitled to an Individual Education Plan	<ul style="list-style-type: none"><li>• A student for whom an Individual Education Plan (IEP) must be designed under the Individual Education Plan order, Ministerial Order 638/95.</li></ul>