

Overview of Class Size and Composition in British Columbia Public Schools 2015/16

School District 062 Sooke

These class size data are current as of October 31, 2015 and have been verified by school districts.



Ministry of
Education

December 2015
Analysis and Reporting Unit

PLEASE NOTE

The Ministry makes small and continuous improvements to the quality of its data. Sometimes these changes result in differences from previously published reports. The data in this report are the most accurate data available at time of publication.

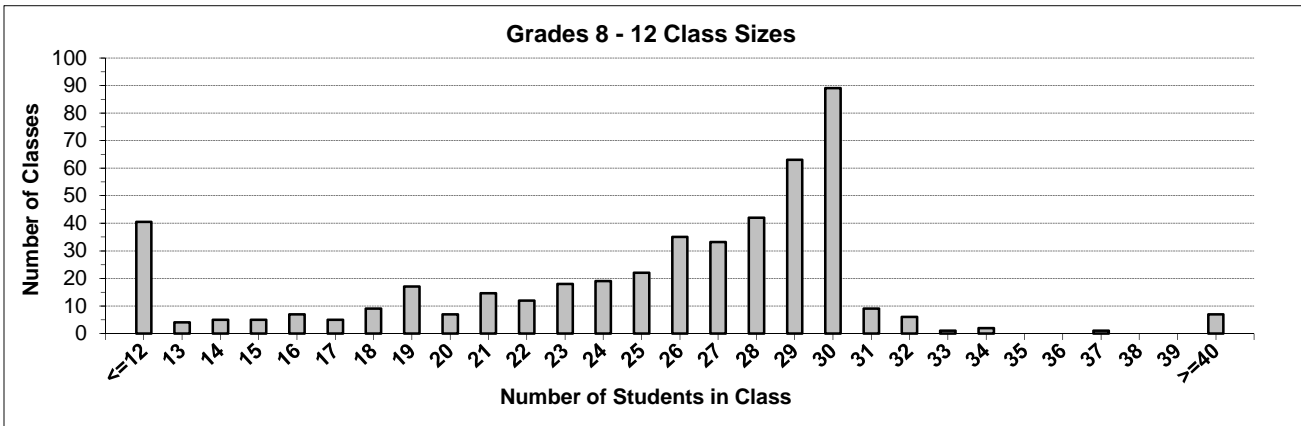
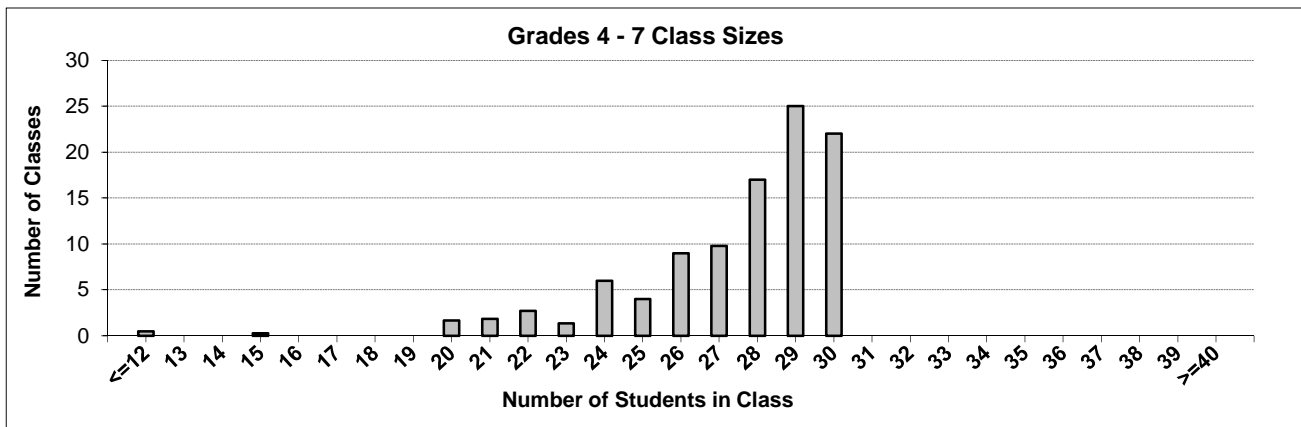
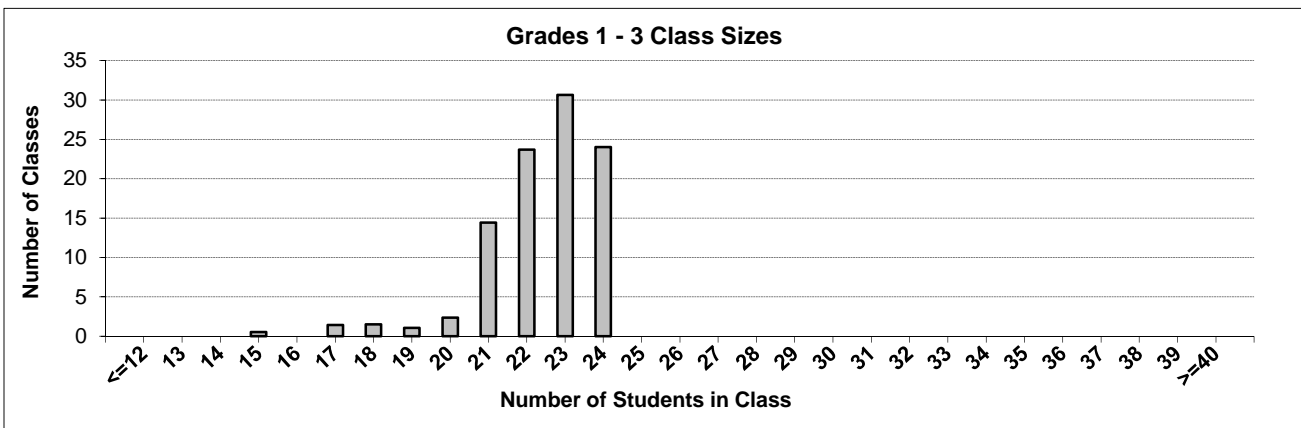
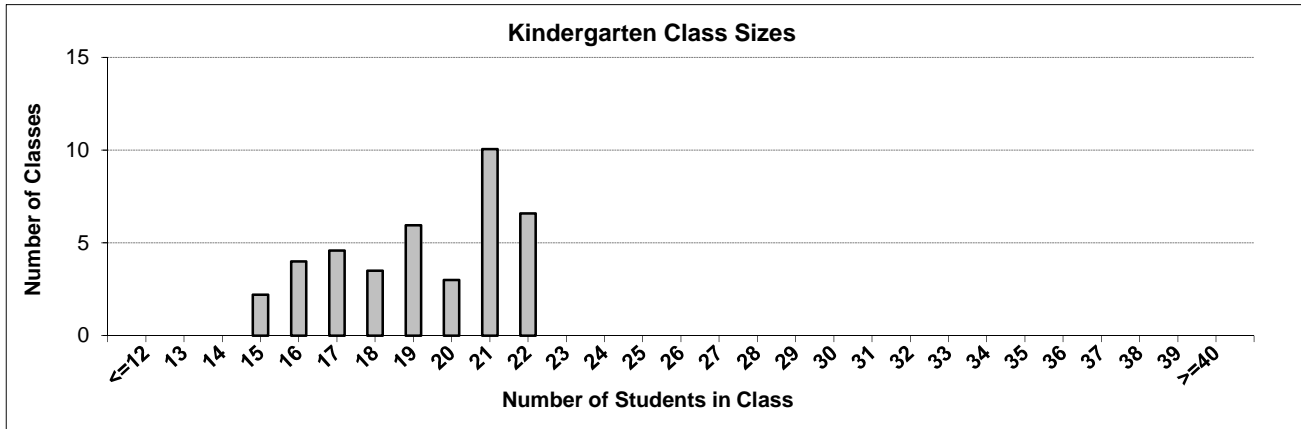
Ministry reports are available at <http://www.bced.gov.bc.ca/reporting/>

Contact the Analysis and Reporting Unit at educ.reportingunit@gov.bc.ca

District Class Sizes

062 Sooke

Source: Class size data collection (as of October 31) from BC public schools.



District - Average Class Size

062 Sooke

Source: Class size data collection (as of October 31) from BC public schools.

District - Average Class Size	Kindergarten	Grade 1 - 3	Grade 4 - 7	Grade 8 - 12
	19.2	22.4	27.4	24.7

Province - Average Class Size	Kindergarten	Grade 1 - 3	Grade 4 - 7	Grade 8 - 12
	19.7	21.8	26.0	23.4

Number of Reported Classes with Assigned Education Assistants	271
---	-----

Number of Reported Schools in District	25
--	----

Number of Reported Classes in District	714
--	-----

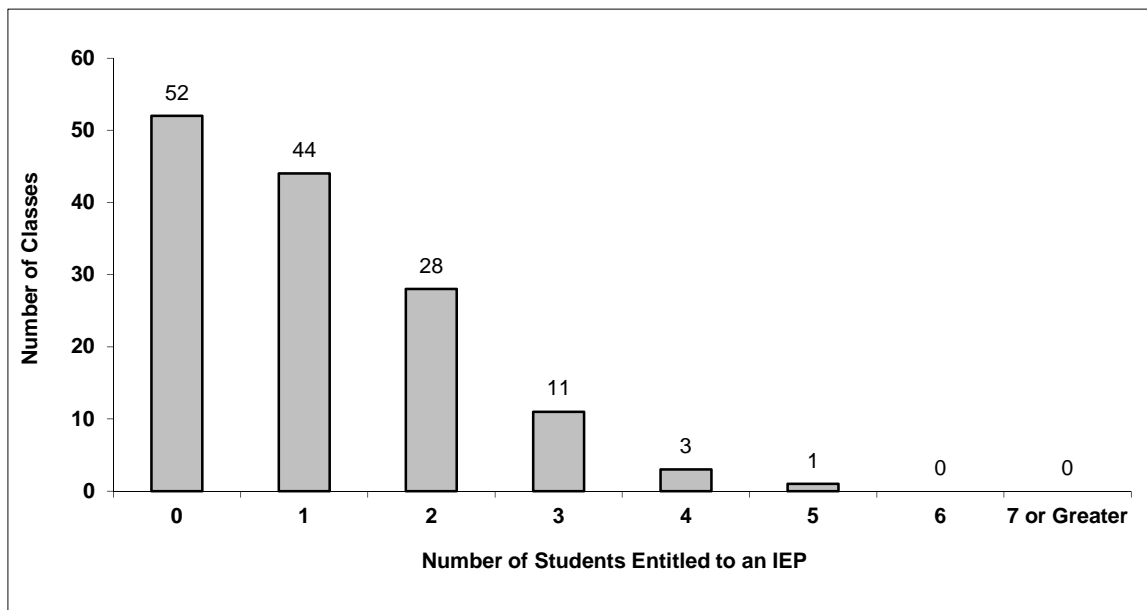
Number of Reported Classes in District with more than 30 Students	26
---	----

District - Students Entitled to an Individual Education Plan (IEP)

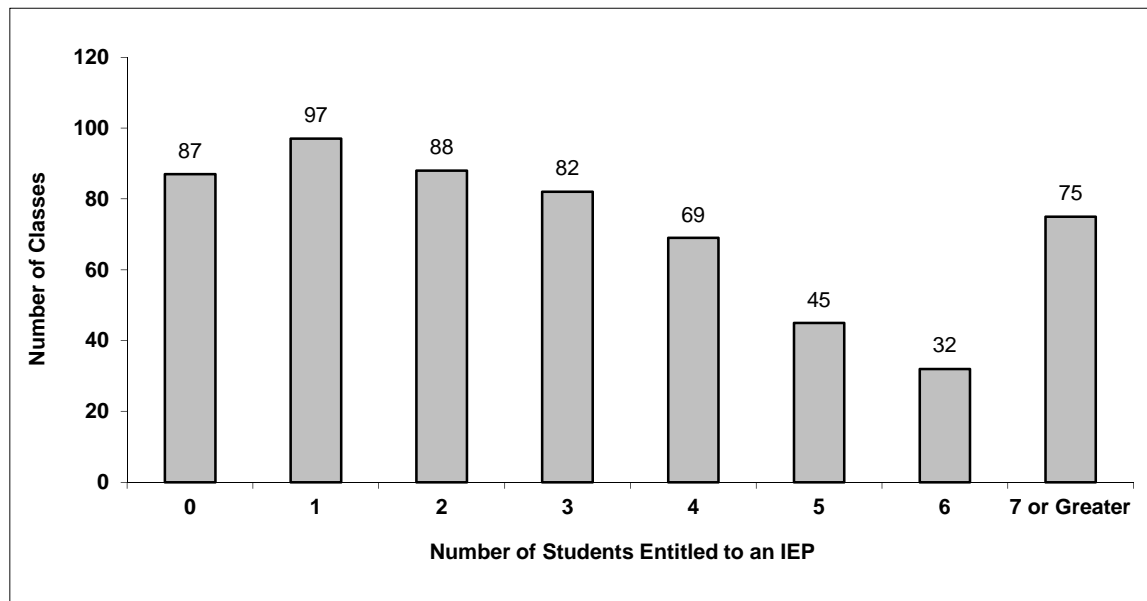
062 Sooke

Source: Class size data collection (as of October 31) from BC public schools.

Grades K-3 - Number of Classes in District with 'X' Number of Students Entitled to an IEP



Grades 4-12 - Number of Classes in District with 'X' Number of Students Entitled to an IEP

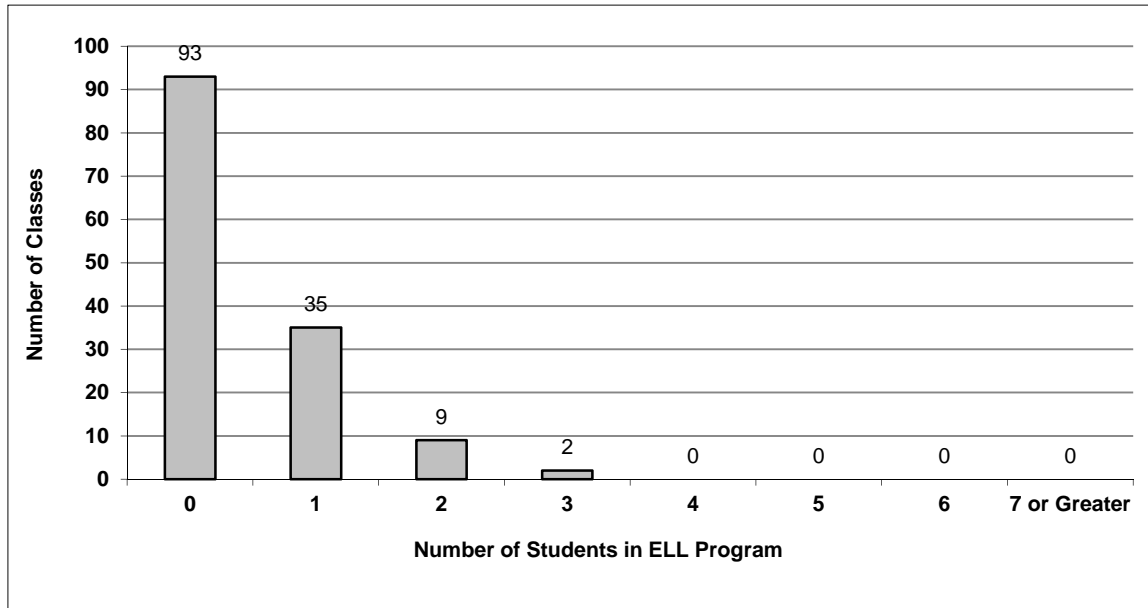


District - English Language Learners (ELL)

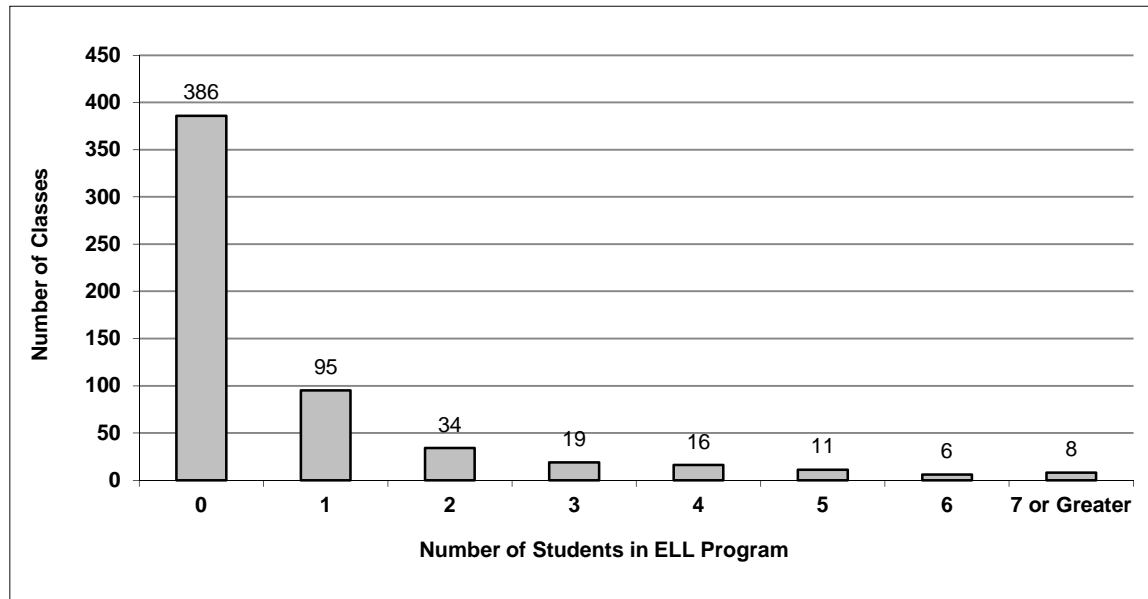
062 Sooke

Source: Class size data collection (as of October 31) from BC public schools.

Grades K-3 - Number of Classes in District with 'X' Number of ELL



Grades 4-12 - Number of Classes in District with 'X' Number of ELL



062 Sooke - Average Class Size by School

Source: Class size data collection (as of October 31) from BC public schools.

Ministry Code	School Name	Kindergarten	Grade 1 - 3	Grade 4 - 7	Grade 8 - 12
06262013	Belmont Secondary	-	-	-	25.3
06262035	Colwood Elementary	20.0	22.3	27.0	-
06262036	Crystal View Elementary	18.9	21.5	25.5	-
06262021	David Cameron Elementary	20.0	22.8	29.0	-
06262016	Dunsmuir Middle School	-	-	27.9	27.9
06262034	Ecole Poirier Elementary	17.3	23.3	27.6	-
06262033	Edward Milne Community School	-	-	-	22.5
06262018	Hans Helgesen Elementary	17.9	20.2	24.5	-
06262002	Happy Valley Elementary	18.3	22.8	27.0	-
06262020	John Muir Elementary	18.0	22.4	27.8	-
06262037	John Stubbs Elementary	18.9	22.8	27.0	-
06262023	John Stubbs Middle	-	-	22.1	22.1
06262031	Journey Middle School	-	-	27.6	28.5
06262032	Lakewood Elementary	20.3	22.7	28.6	-
06262011	Millstream Elementary	17.0	21.8	26.6	-
06262005	Port Renfrew Elementary	15.0	15.0	15.0	-
06262038	Royal Bay Secondary	-	-	-	24.9
06262007	Ruth King Elementary	21.0	23.3	28.0	-
06262010	Sangster Elementary	21.5	23.8	28.2	-
06262012	Saseenos Elementary	15.0	20.2	26.3	-
06262015	Savory Elementary	18.2	21.8	29.0	-
06262004	Sooke Elementary	21.0	22.0	25.8	-
06262025	Spencer Middle School	-	-	29.1	29.1
06262026	Willway Elementary	21.8	22.1	28.5	-
06262022	Wishart Elementary	22.0	22.5	28.3	-

Glossary

Term	Definition / Notes
English Language Learners (ELL)	• A program offered to students whose primary language(s) is/are other than English, and who may require additional services.
Grade	• The assigned grade of a student on October 31.
K	• Kindergarten
Number of Students	• Student population is calculated by headcount.
Student	• A person enrolled in a BC school. Student populations are calculated by headcount. Students include all adult and school-aged persons who are working toward a certificate of graduation.
Student Entitled to an Individual Education Plan	• A student for whom an Individual Education Plan (IEP) must be designed under the Individual Education Plan order, Ministerial Order 638/95.