

Overview of Class Size and Composition in British Columbia Public Schools 2015/16

School District 061 Greater Victoria

These class size data are current as of October 31, 2015 and have been verified by school districts.



Ministry of
Education

December 2015
Analysis and Reporting Unit

PLEASE NOTE

The Ministry makes small and continuous improvements to the quality of its data. Sometimes these changes result in differences from previously published reports. The data in this report are the most accurate data available at time of publication.

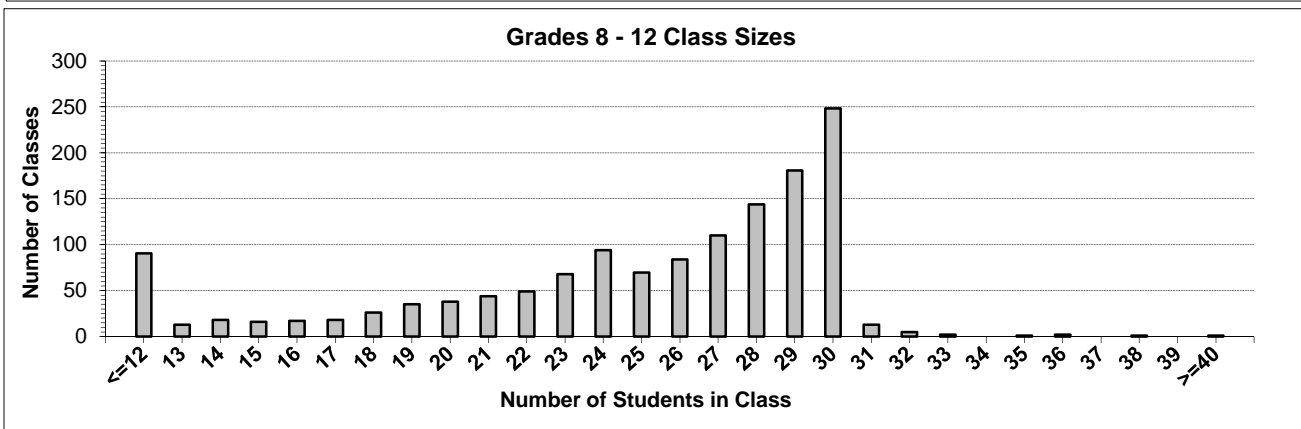
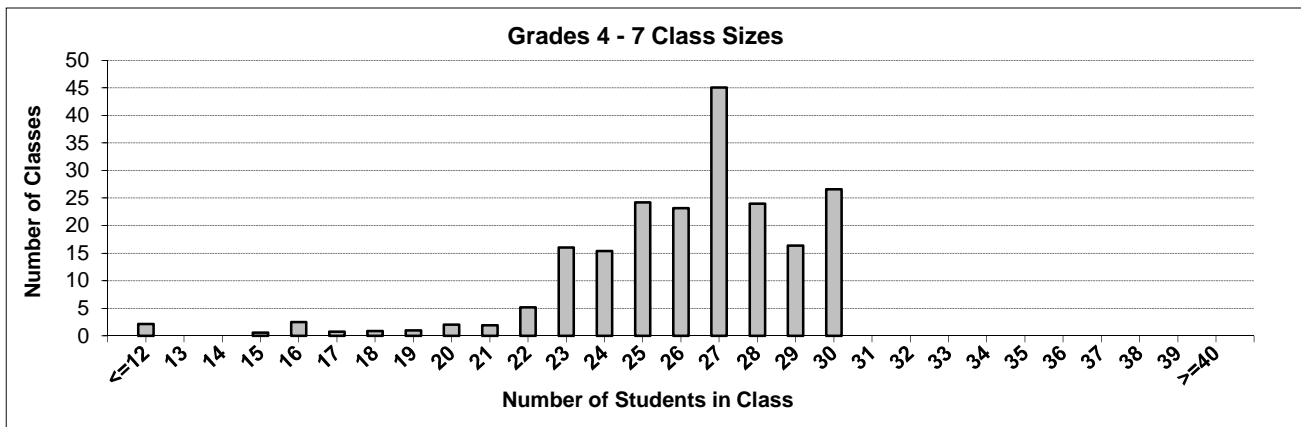
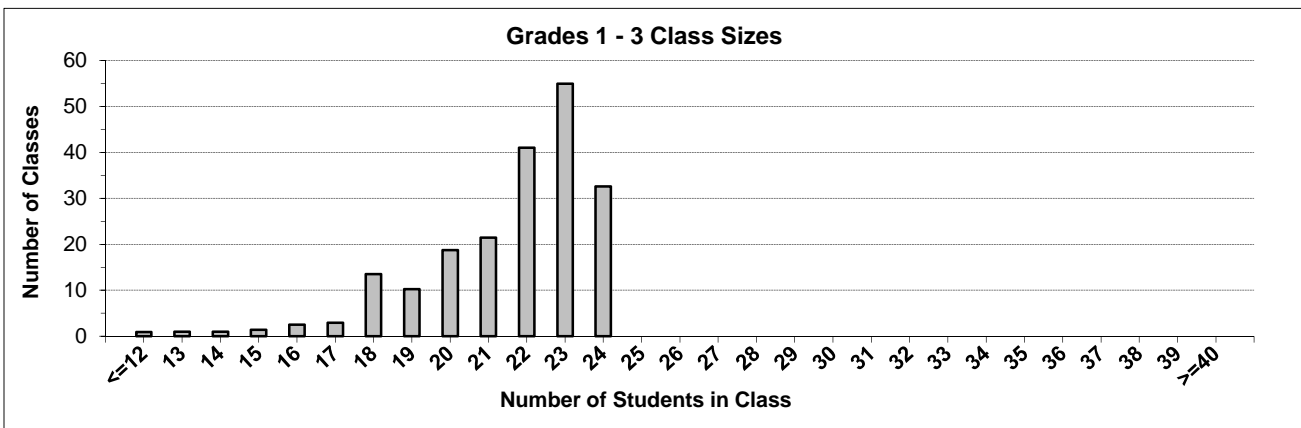
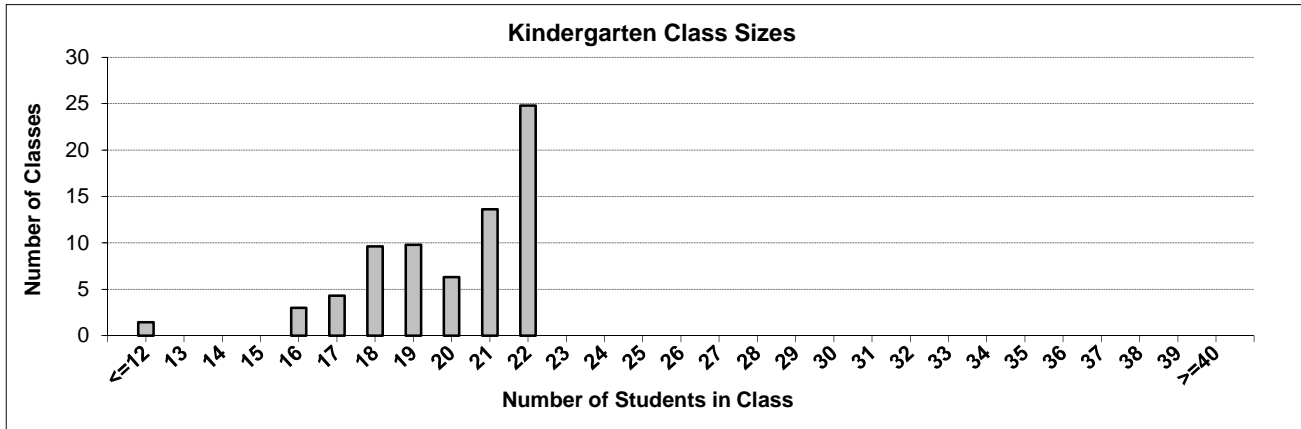
Ministry reports are available at <http://www.bced.gov.bc.ca/reporting/>

Contact the Analysis and Reporting Unit at educ.reportingunit@gov.bc.ca

District Class Sizes

061 Greater Victoria

Source: Class size data collection (as of October 31) from BC public schools.



District - Average Class Size

061 Greater Victoria

Source: Class size data collection (as of October 31) from BC public schools.

District - Average Class Size	Kindergarten	Grade 1 - 3	Grade 4 - 7	Grade 8 - 12
	19.9	21.5	26.1	24.5

Province - Average Class Size	Kindergarten	Grade 1 - 3	Grade 4 - 7	Grade 8 - 12
	19.7	21.8	26.0	23.4

Number of Reported Classes with Assigned Education Assistants	522
---	-----

Number of Reported Schools in District	44
--	----

Number of Reported Classes in District	1,871
--	-------

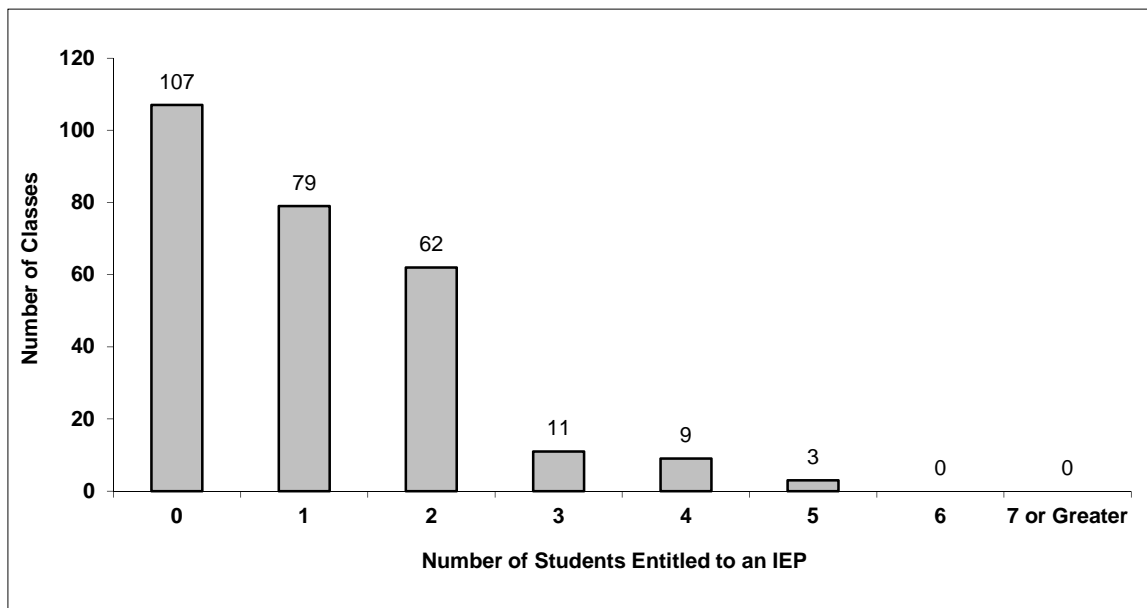
Number of Reported Classes in District with more than 30 Students	25
---	----

District - Students Entitled to an Individual Education Plan (IEP)

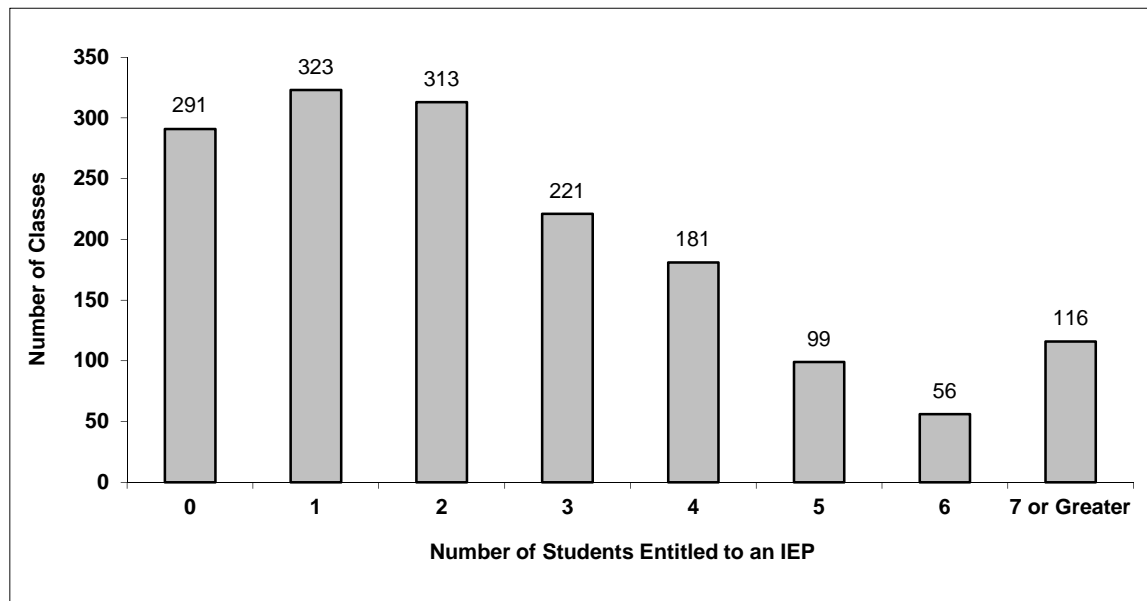
061 Greater Victoria

Source: Class size data collection (as of October 31) from BC public schools.

Grades K-3 - Number of Classes in District with 'X' Number of Students Entitled to an IEP



Grades 4-12 - Number of Classes in District with 'X' Number of Students Entitled to an IEP

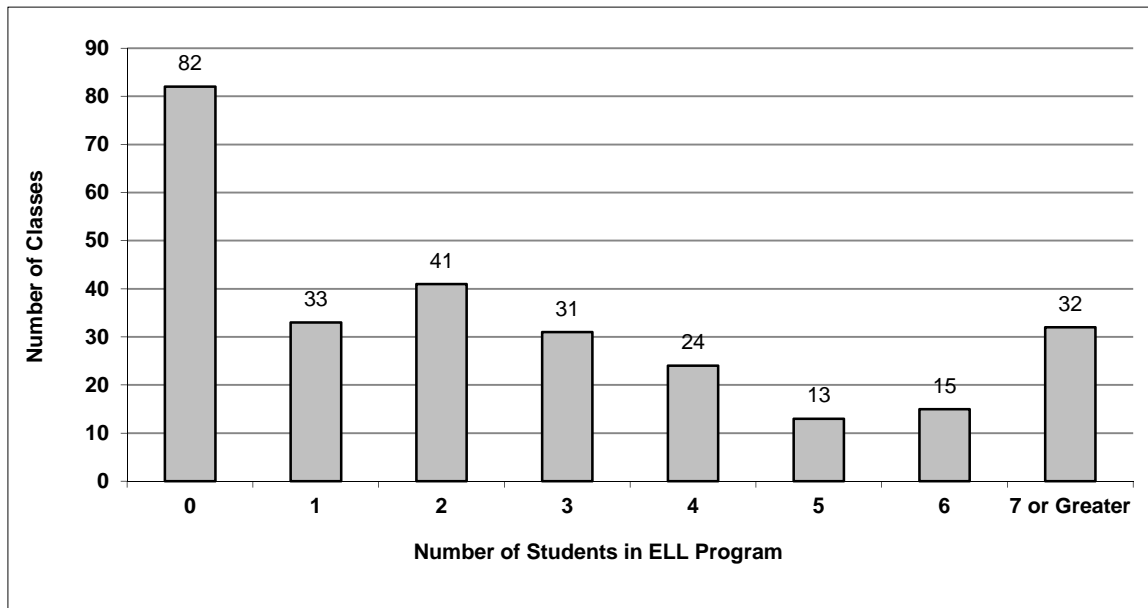


District - English Language Learners (ELL)

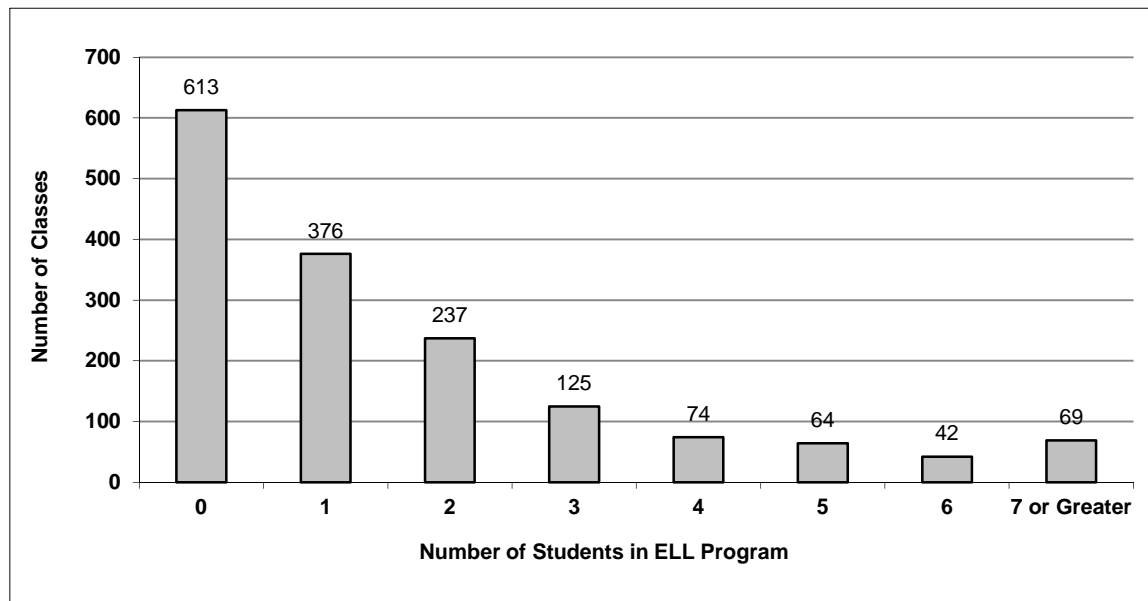
061 Greater Victoria

Source: Class size data collection (as of October 31) from BC public schools.

Grades K-3 - Number of Classes in District with 'X' Number of ELL



Grades 4-12 - Number of Classes in District with 'X' Number of ELL



061 Greater Victoria - Average Class Size by School

Source: Class size data collection (as of October 31) from BC public schools.

Ministry Code	School Name	Kindergarten	Grade 1 - 3	Grade 4 - 7	Grade 8 - 12
06161062	Arbutus Global Middle School	-	-	25.1	25.2
06161051	Braefoot Elementary	21.0	22.6	28.7	-
06161047	Campus View Elementary	21.2	22.6	28.7	-
06161025	Cedar Hill Middle	-	-	27.5	26.1
06161035	Central Middle School	-	-	26.2	24.7
06161019	Cloverdale Traditional Elementary	21.5	22.6	26.0	-
06161068	Colquitz Middle School	-	-	26.9	27.8
06161010	Craigflower Elementary	11.0	13.9	16.1	-
06161028	Doncaster Elementary	21.8	22.6	28.8	-
06161067	Eagle View Elementary	21.0	23.0	21.0	-
06161040	Ecole Macaulay Elementary	19.3	19.2	24.2	-
06161046	Ecole Marigold School	22.0	23.3	26.3	-
06161016	Ecole Quadra Elementary	18.4	19.6	22.1	-
06161021	Ecole Willows Elementary	22.0	22.7	29.1	-
06161048	Esquimalt High	-	-	-	23.5
06161030	Frank Hobbs Elementary	18.3	21.8	27.0	-
06161005	George Jay Elementary	17.3	20.9	25.4	24.0
06161038	Glanford Middle School	-	-	28.3	29.2
06161001	Gordon Head Middle School	-	-	26.8	28.6
06161052	Hillcrest Elementary	18.0	23.4	28.8	-
06161033	James Bay Community	20.5	23.4	28.0	-
06161042	Lake Hill Elementary	19.0	22.0	26.0	-
06161064	Lambrick Park Secondary	-	-	-	21.0
06161036	Lansdowne Middle School	-	-	25.7	24.4
06161012	Margaret Jenkins Elementary	20.5	21.8	26.2	-
06161027	Mckenzie Elementary	21.0	18.8	23.2	-
06161069	Monterey Middle School	-	-	27.9	28.3
06161049	Mount Douglas Secondary	-	-	-	26.0
06161054	Northridge Elementary	20.7	22.3	29.3	-
06161024	Oak Bay Secondary	-	-	-	24.6
06161013	Oaklands Elementary	21.0	22.4	26.5	-
06161057	Reynolds Secondary	-	-	-	23.6
06161056	Rockheights Middle School	-	-	24.3	21.7
06161066	Rogers Elementary	22.0	22.2	25.2	-
06161058	Shoreline Community Middle School	-	-	21.4	23.7
06161007	Sir James Douglas Elementary	21.7	21.5	24.3	-
06161002	South Park Family School	18.5	19.3	23.4	-
06161063	Spectrum Community	-	-	-	24.7
06161032	Strawberry Vale Elementary	22.0	22.6	27.3	-
06161020	Tillicum Community School	18.2	20.7	25.1	-
06161065	Torquay Elementary	20.0	22.2	30.0	-
06161018	Victoria High	-	-	-	24.4
06161004	Victoria West Elementary	18.5	18.5	23.0	-
06161029	View Royal Elementary	19.7	23.0	26.8	-

Glossary

Term	Definition / Notes
English Language Learners (ELL)	<ul style="list-style-type: none">• A program offered to students whose primary language(s) is/are other than English, and who may require additional services.
Grade	<ul style="list-style-type: none">• The assigned grade of a student on October 31.
K	<ul style="list-style-type: none">• Kindergarten
Number of Students	<ul style="list-style-type: none">• Student population is calculated by headcount.
Student	<ul style="list-style-type: none">• A person enrolled in a BC school. Student populations are calculated by headcount. Students include all adult and school-aged persons who are working toward a certificate of graduation.
Student Entitled to an Individual Education Plan	<ul style="list-style-type: none">• A student for whom an Individual Education Plan (IEP) must be designed under the Individual Education Plan order, Ministerial Order 638/95.