

Overview of Class Size and Composition in British Columbia Public Schools 2015/16

School District 060 Peace River North

These class size data are current as of October 31, 2015 and have been verified by school districts.



Ministry of
Education

December 2015
Analysis and Reporting Unit

PLEASE NOTE

The Ministry makes small and continuous improvements to the quality of its data. Sometimes these changes result in differences from previously published reports. The data in this report are the most accurate data available at time of publication.

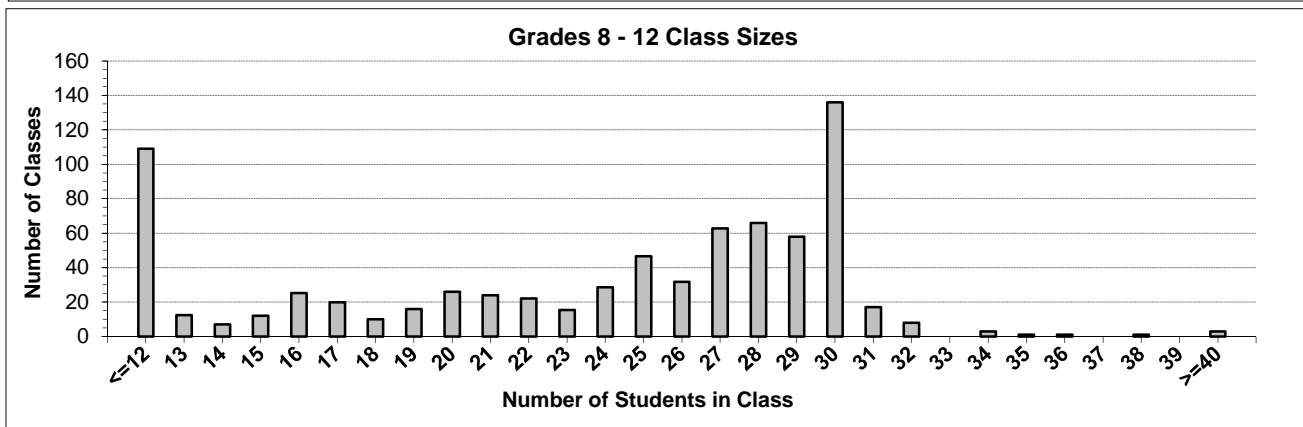
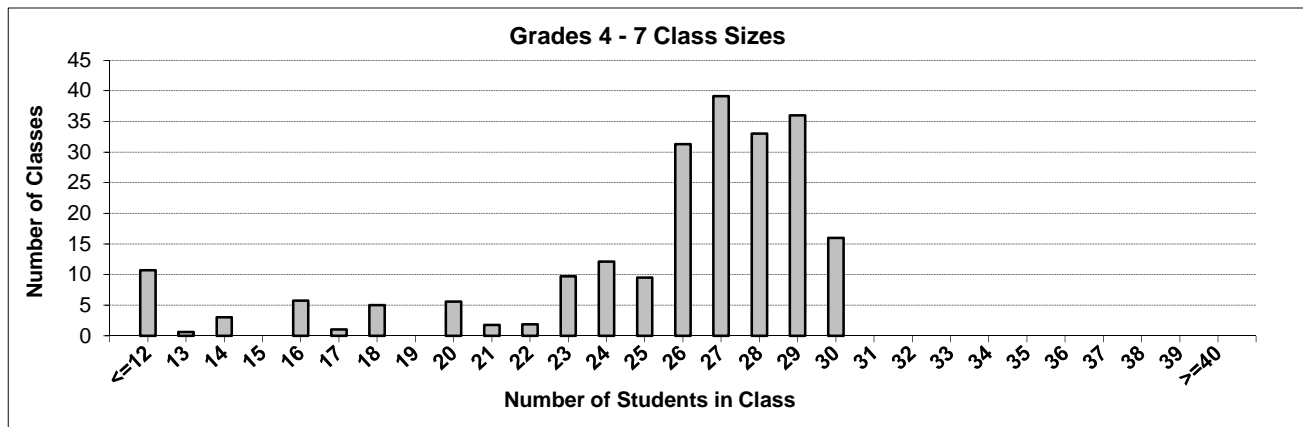
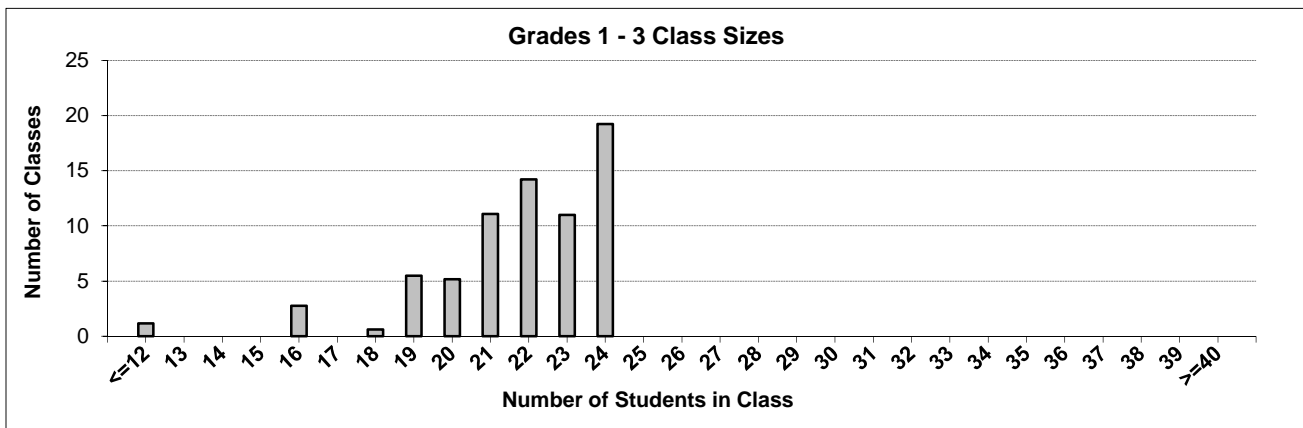
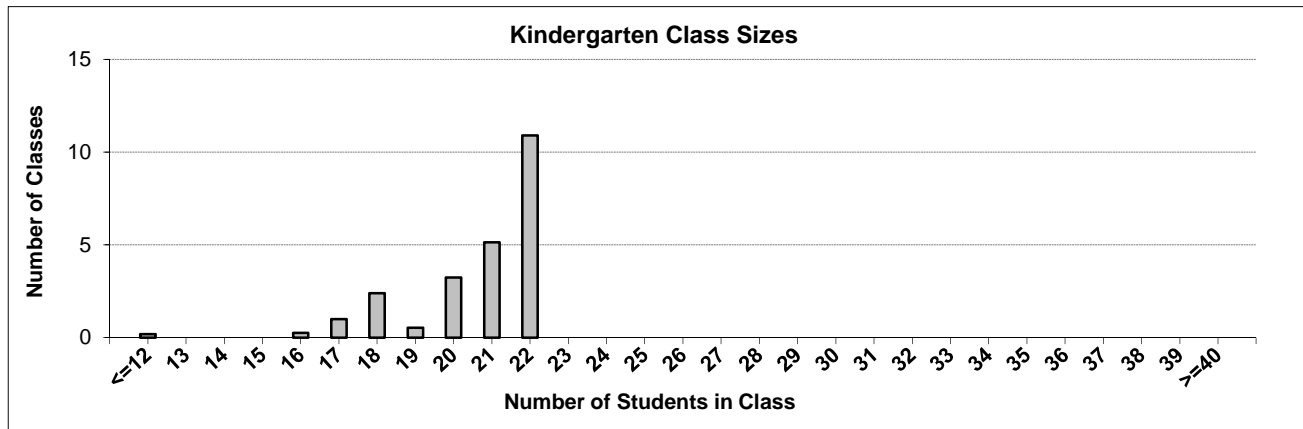
Ministry reports are available at <http://www.bced.gov.bc.ca/reporting/>

Contact the Analysis and Reporting Unit at educ.reportingunit@gov.bc.ca

District Class Sizes

060 Peace River North

Source: Class size data collection (as of October 31) from BC public schools.



District - Average Class Size

060 Peace River North

Source: Class size data collection (as of October 31) from BC public schools.

District - Average Class Size	Kindergarten	Grade 1 - 3	Grade 4 - 7	Grade 8 - 12
	20.7	21.7	25.1	22.8

Province - Average Class Size	Kindergarten	Grade 1 - 3	Grade 4 - 7	Grade 8 - 12
	19.7	21.8	26.0	23.4

Number of Reported Classes with Assigned Education Assistants	487
---	-----

Number of Reported Schools in District	20
--	----

Number of Reported Classes in District	1,079
--	-------

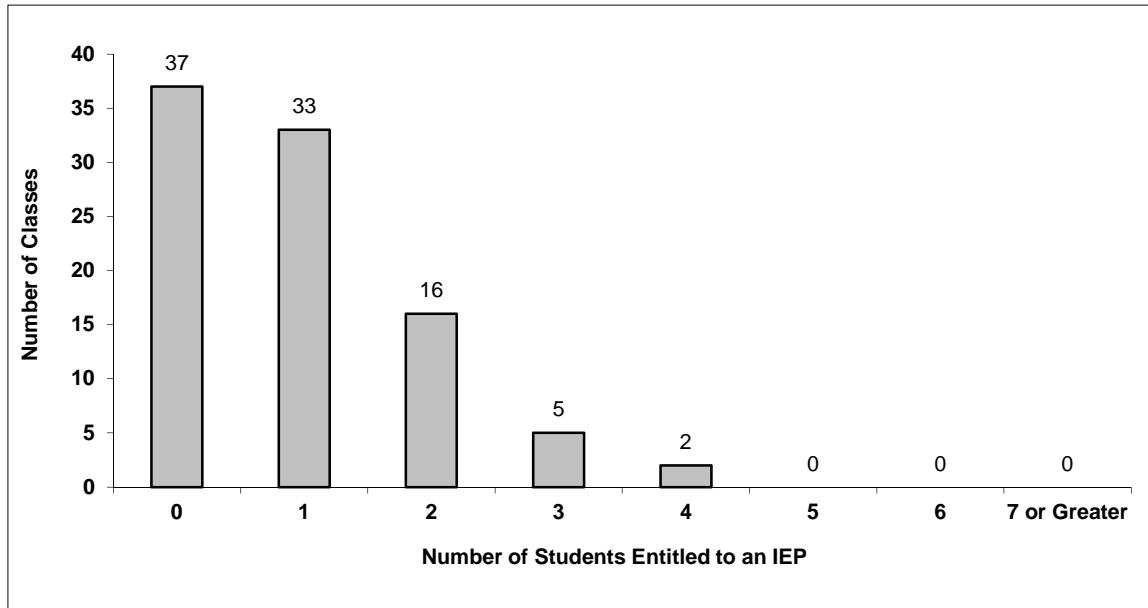
Number of Reported Classes in District with more than 30 Students	34
---	----

District - Students Entitled to an Individual Education Plan (IEP)

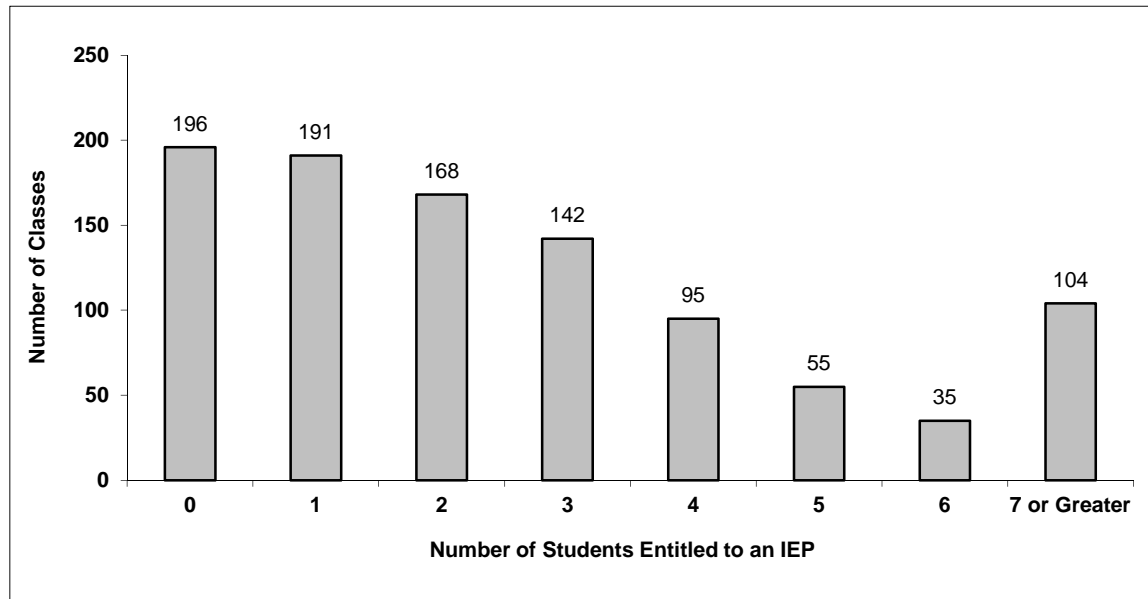
060 Peace River North

Source: Class size data collection (as of October 31) from BC public schools.

Grades K-3 - Number of Classes in District with 'X' Number of Students Entitled to an IEP



Grades 4-12 - Number of Classes in District with 'X' Number of Students Entitled to an IEP

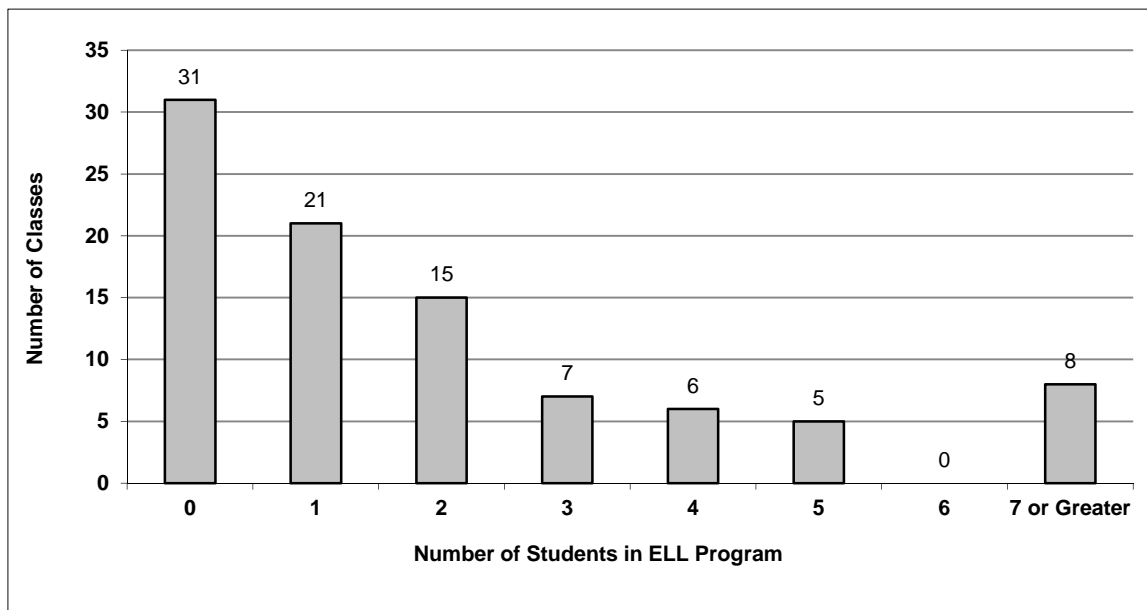


District - English Language Learners (ELL)

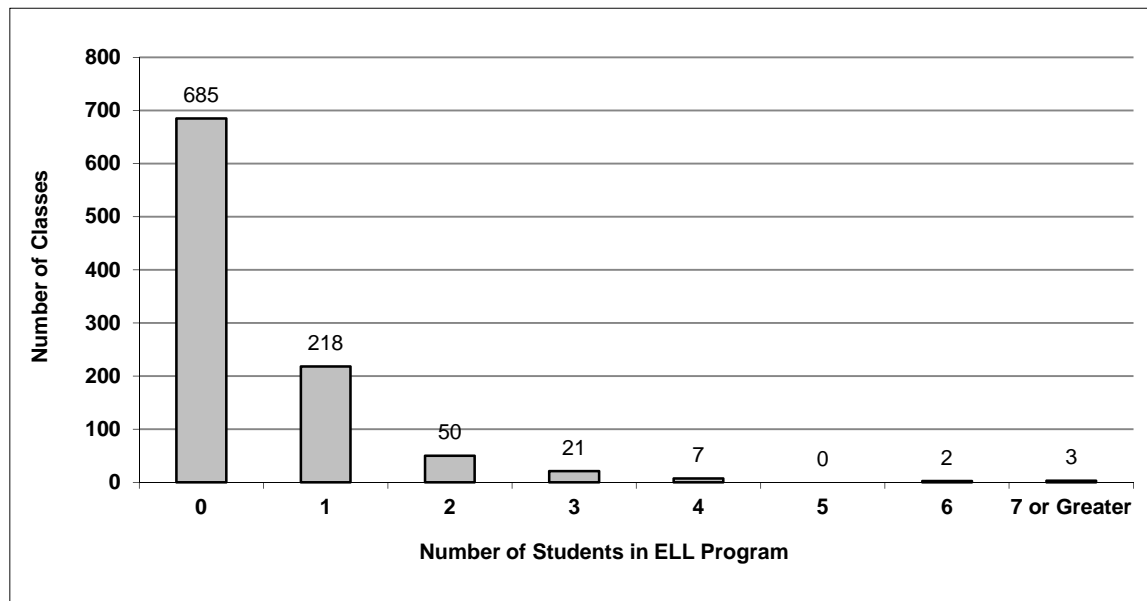
060 Peace River North

Source: Class size data collection (as of October 31) from BC public schools.

Grades K-3 - Number of Classes in District with 'X' Number of ELL



Grades 4-12 - Number of Classes in District with 'X' Number of ELL



060 Peace River North - Average Class Size by School

Source: Class size data collection (as of October 31) from BC public schools.

Ministry Code	School Name	Kindergarten	Grade 1 - 3	Grade 4 - 7	Grade 8 - 12
06060025	Alwin Holland Elementary	22.0	23.4	28.5	-
06060056	Baldonnel Elementary	21.9	20.0	21.0	-
06060032	Bert Ambrose	20.4	22.2	27.3	-
06060062	Bert Bowes Middle School	-	-	25.3	23.3
06060040	Buick Creek Elementary	11.0	11.0	12.0	-
06060047	C M Finch Elementary	22.0	22.9	27.3	-
06060006	Charlie Lake Elementary	20.6	21.8	28.5	-
06060045	Clearview Elem-Jr Secondary	22.0	23.8	23.1	23.0
06060063	Dr Kearney Middle School	-	-	25.6	24.4
06060058	Duncan Cran Elementary	21.6	22.3	28.0	-
06060007	Ecole Central Elem School of the Arts	21.3	21.3	25.6	23.0
06060064	Energetic Learning Campus	-	-	-	28.3
06060060	Hudson's Hope School	19.0	17.7	15.2	12.7
06060015	North Peace Secondary	-	-	-	22.8
06060039	Prespatou Elem-Secondary	21.0	22.1	27.1	17.3
06060026	Robert Ogilvie Elementary	18.4	22.7	26.4	-
06060021	Taylor Elementary	21.8	22.9	25.0	-
06060061	Upper Halfway Elem	16.0	14.8	12.5	13.0
06060051	Upper Pine Elem-Jr Secondary	17.0	20.7	24.7	20.4
06060030	Wonowon Elementary	18.0	16.8	-	-

Glossary

Term	Definition / Notes
English Language Learners (ELL)	<ul style="list-style-type: none">• A program offered to students whose primary language(s) is/are other than English, and who may require additional services.
Grade	<ul style="list-style-type: none">• The assigned grade of a student on October 31.
K	<ul style="list-style-type: none">• Kindergarten
Number of Students	<ul style="list-style-type: none">• Student population is calculated by headcount.
Student	<ul style="list-style-type: none">• A person enrolled in a BC school. Student populations are calculated by headcount. Students include all adult and school-aged persons who are working toward a certificate of graduation.
Student Entitled to an Individual Education Plan	<ul style="list-style-type: none">• A student for whom an Individual Education Plan (IEP) must be designed under the Individual Education Plan order, Ministerial Order 638/95.