

Overview of Class Size and Composition in British Columbia Public Schools 2015/16

School District 059 Peace River South

These class size data are current as of October 31, 2015 and have been verified by school districts.



Ministry of
Education

December 2015
Analysis and Reporting Unit

PLEASE NOTE

The Ministry makes small and continuous improvements to the quality of its data. Sometimes these changes result in differences from previously published reports. The data in this report are the most accurate data available at time of publication.

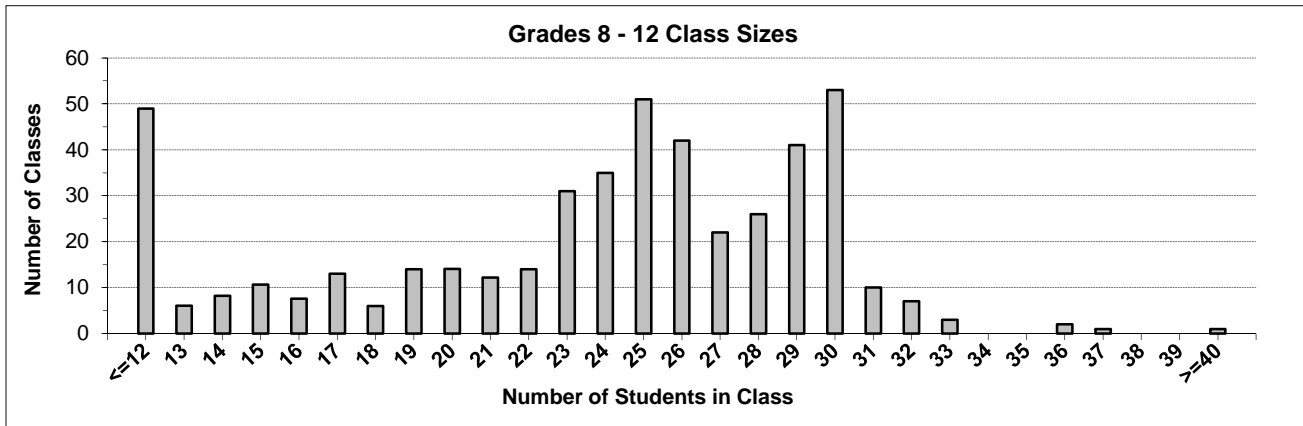
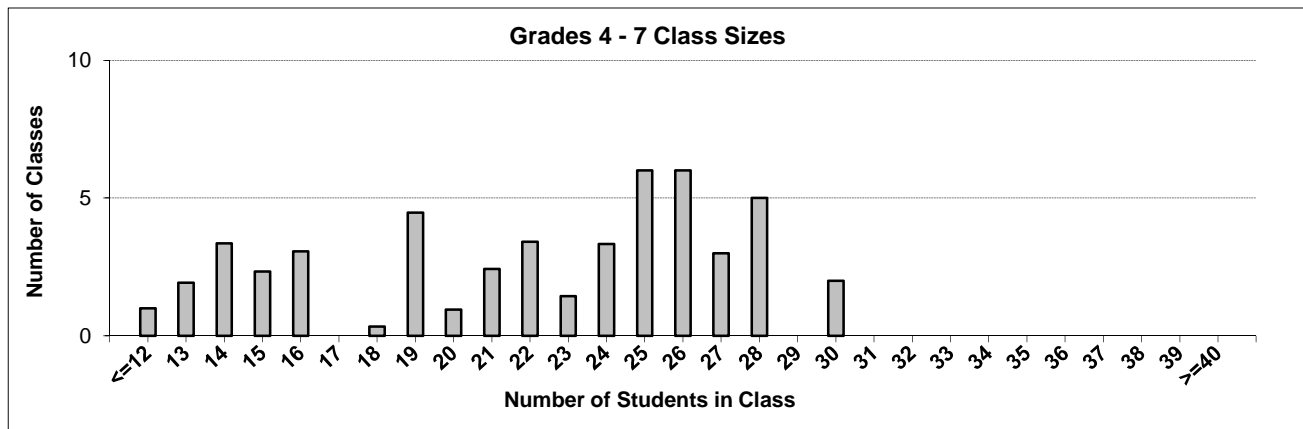
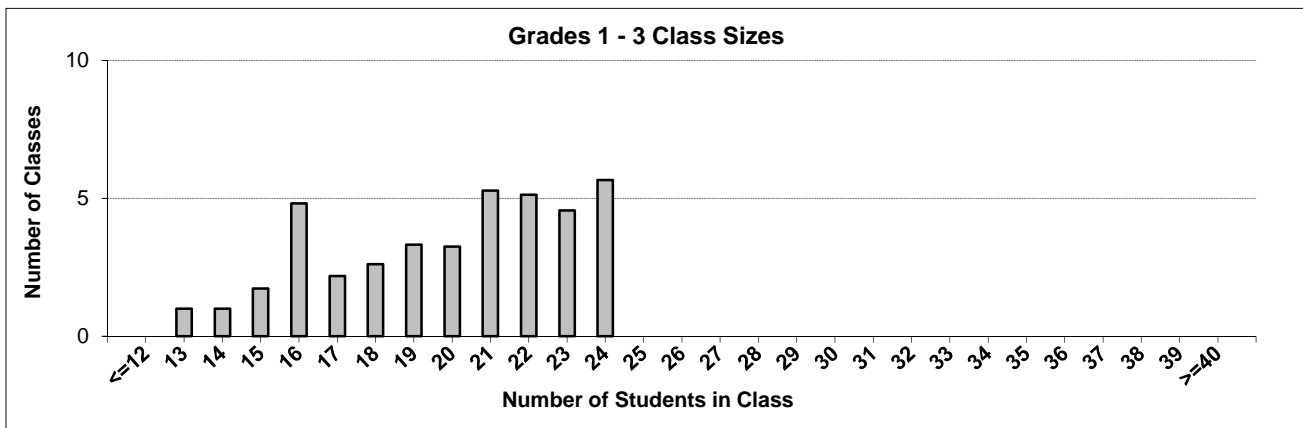
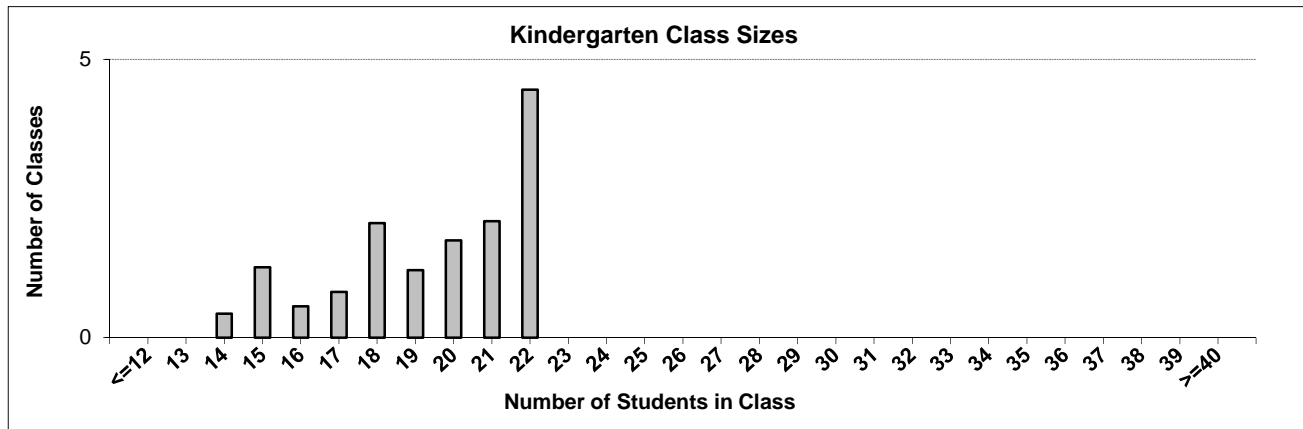
Ministry reports are available at <http://www.bced.gov.bc.ca/reporting/>

Contact the Analysis and Reporting Unit at educ.reportingunit@gov.bc.ca

District Class Sizes

059 Peace River South

Source: Class size data collection (as of October 31) from BC public schools.



District - Average Class Size

059 Peace River South

Source: Class size data collection (as of October 31) from BC public schools.

District - Average Class Size	Kindergarten	Grade 1 - 3	Grade 4 - 7	Grade 8 - 12
	19.5	19.9	22.0	23.0

Province - Average Class Size	Kindergarten	Grade 1 - 3	Grade 4 - 7	Grade 8 - 12
	19.7	21.8	26.0	23.4

Number of Reported Classes with Assigned Education Assistants	0
---	---

Number of Reported Schools in District	19
--	----

Number of Reported Classes in District	585
--	-----

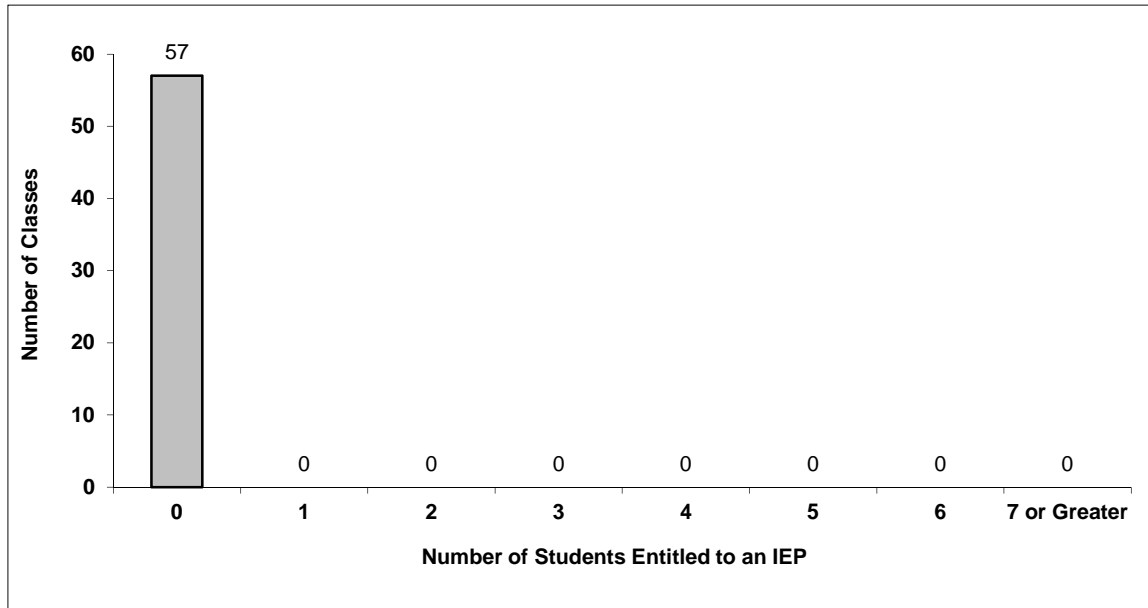
Number of Reported Classes in District with more than 30 Students	24
---	----

District - Students Entitled to an Individual Education Plan (IEP)

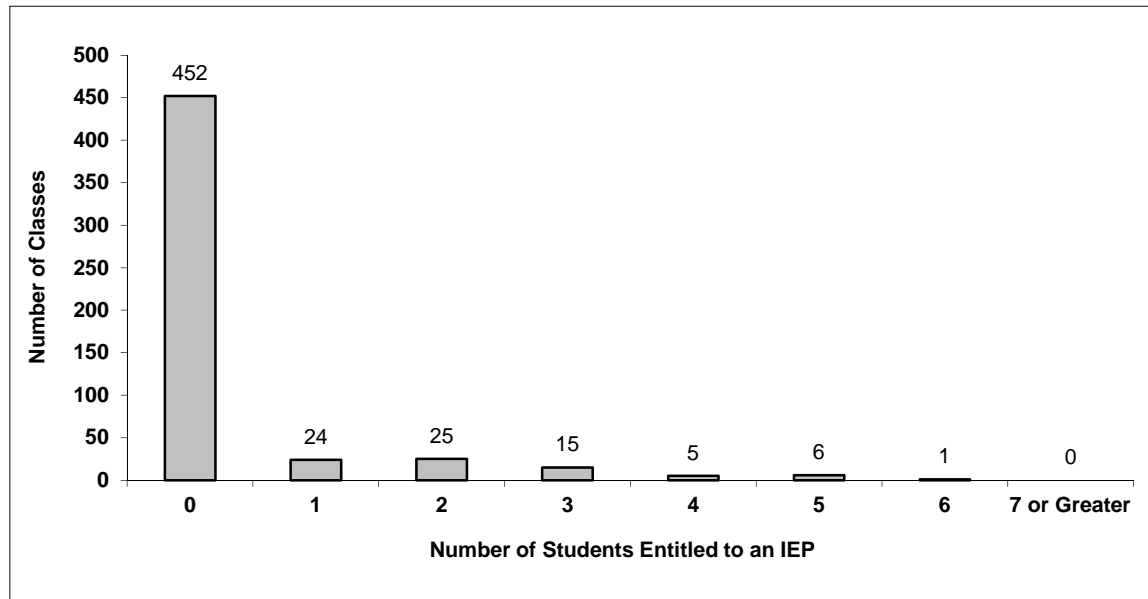
059 Peace River South

Source: Class size data collection (as of October 31) from BC public schools.

Grades K-3 - Number of Classes in District with 'X' Number of Students Entitled to an IEP



Grades 4-12 - Number of Classes in District with 'X' Number of Students Entitled to an IEP

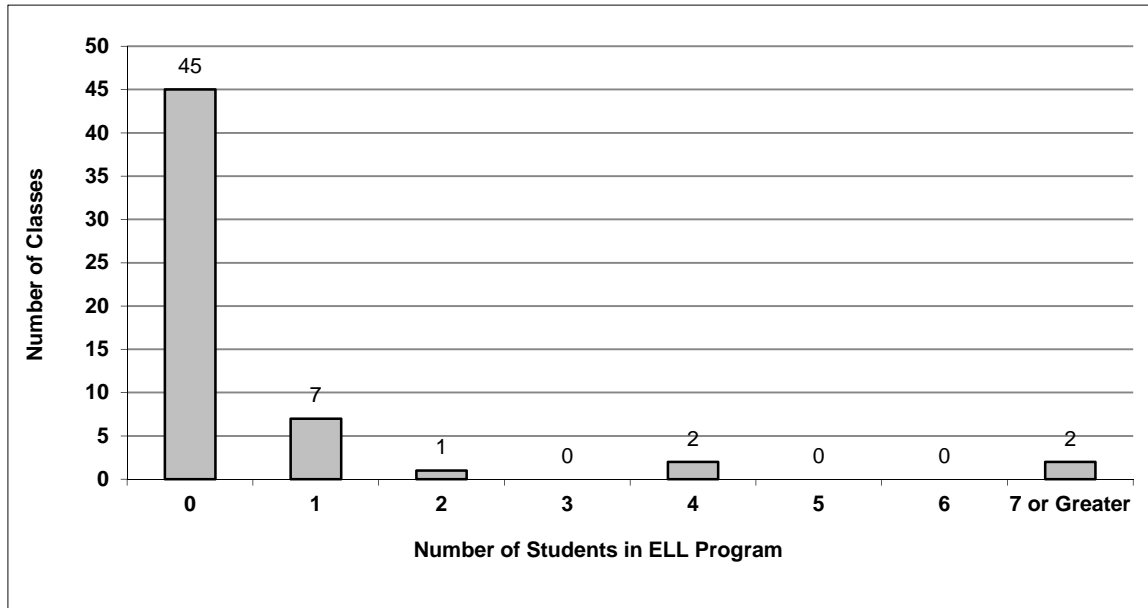


District - English Language Learners (ELL)

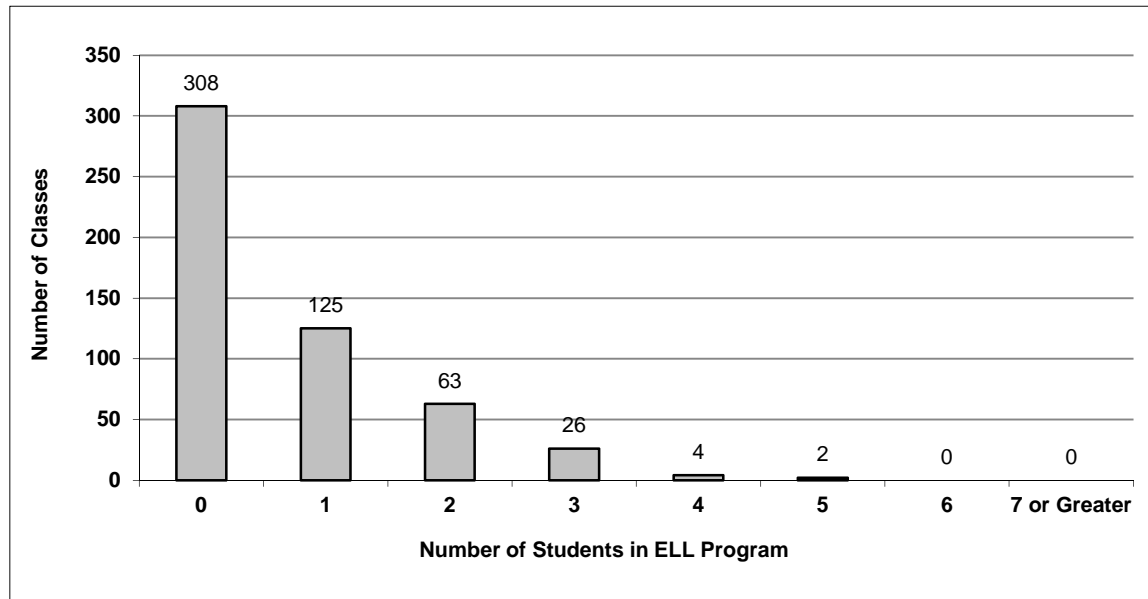
059 Peace River South

Source: Class size data collection (as of October 31) from BC public schools.

Grades K-3 - Number of Classes in District with 'X' Number of ELL



Grades 4-12 - Number of Classes in District with 'X' Number of ELL



059 Peace River South - Average Class Size by School

Source: Class size data collection (as of October 31) from BC public schools.

Ministry Code	School Name	Kindergarten	Grade 1 - 3	Grade 4 - 7	Grade 8 - 12
05959001	Canalta Elementary	19.4	20.3	24.5	-
05959011	Chetwynd Secondary	-	-	-	19.6
05959003	Crescent Park Elementary	21.3	21.2	26.9	-
05959008	Dawson Creek Secondary	-	-	-	25.4
05959014	Devereaux Elementary	15.0	16.4	23.5	-
05959013	Don Titus Montessori	17.0	15.7	18.4	-
05959005	Ecole Frank Ross Elementary	21.2	20.7	25.7	-
05959031	Little Prairie Elementary	18.0	21.0	24.0	-
05959033	McLeod Elementary Secondary	16.0	14.2	10.0	-
05959018	Moberly Lake Elementary	21.0	18.7	16.0	-
05959024	Parkland Elementary	14.0	16.2	16.5	-
05959032	Peace View School	-	14.0	14.0	14.0
05959010	Pouce Coupe Elementary	20.0	22.8	24.6	-
05959020	Rolla Discovery School	16.0	16.0	14.0	-
05959025	South Peace Elementary	-	21.0	21.0	21.0
05959009	Tremblay Elementary	21.0	23.3	24.7	-
05959029	Tumbler Ridge Elementary	22.0	21.5	26.1	-
05959027	Tumbler Ridge Secondary	-	-	16.1	15.9
05959012	Windrem Elementary	17.1	20.0	26.3	-

Glossary

Term	Definition / Notes
English Language Learners (ELL)	<ul style="list-style-type: none">• A program offered to students whose primary language(s) is/are other than English, and who may require additional services.
Grade	<ul style="list-style-type: none">• The assigned grade of a student on October 31.
K	<ul style="list-style-type: none">• Kindergarten
Number of Students	<ul style="list-style-type: none">• Student population is calculated by headcount.
Student	<ul style="list-style-type: none">• A person enrolled in a BC school. Student populations are calculated by headcount. Students include all adult and school-aged persons who are working toward a certificate of graduation.
Student Entitled to an Individual Education Plan	<ul style="list-style-type: none">• A student for whom an Individual Education Plan (IEP) must be designed under the Individual Education Plan order, Ministerial Order 638/95.