

# Overview of Class Size and Composition in British Columbia Public Schools 2015/16

## School District 054 Bulkley Valley

These class size data are current as of October 31, 2015 and have been verified by school districts.



Ministry of  
Education

December 2015  
Analysis and Reporting Unit

---

**PLEASE NOTE**

The Ministry makes small and continuous improvements to the quality of its data. Sometimes these changes result in differences from previously published reports. The data in this report are the most accurate data available at time of publication.

Ministry reports are available at <http://www.bced.gov.bc.ca/reporting/>

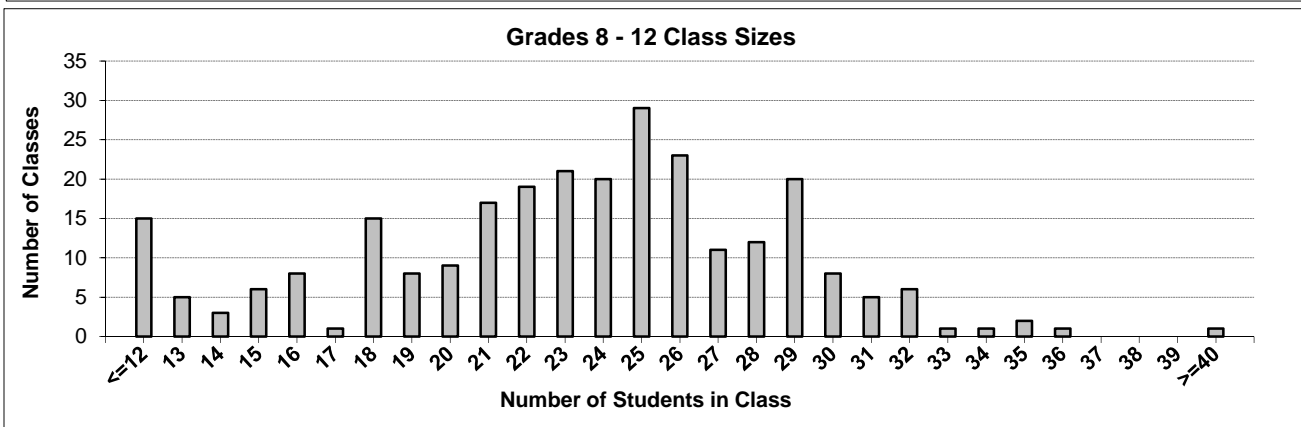
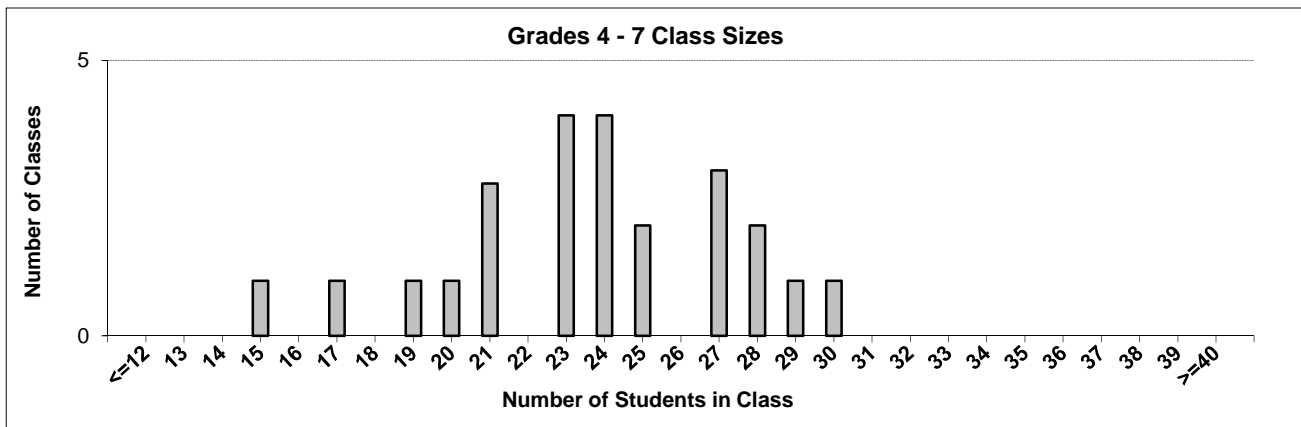
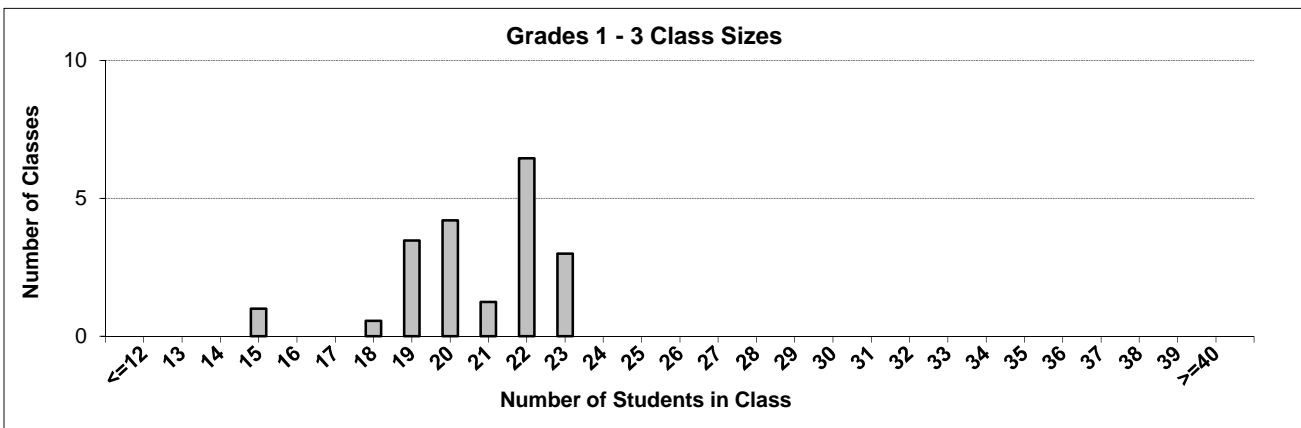
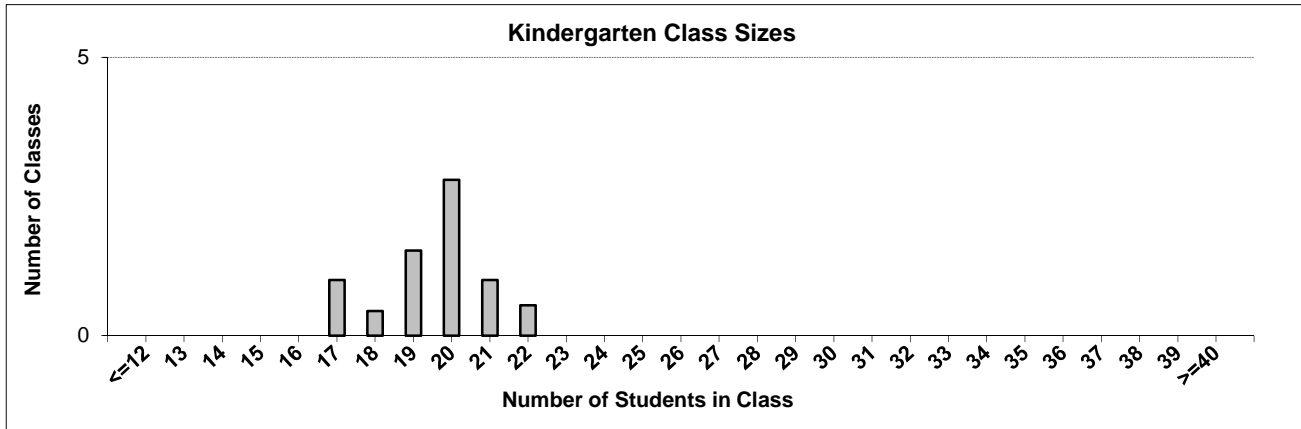
Contact the Analysis and Reporting Unit at [educ.reportingunit@gov.bc.ca](mailto:educ.reportingunit@gov.bc.ca)

---

# District Class Sizes

## 054 Bulkley Valley

Source: Class size data collection (as of October 31) from BC public schools.



---

## District - Average Class Size

---

### 054 Bulkley Valley

Source: Class size data collection (as of October 31) from BC public schools.

District - Average Class Size	Kindergarten	Grade 1 - 3	Grade 4 - 7	Grade 8 - 12
	19.5	20.7	23.7	23.1

Province - Average Class Size	Kindergarten	Grade 1 - 3	Grade 4 - 7	Grade 8 - 12
	19.7	21.8	26.0	23.4

Number of Reported Classes with Assigned Education Assistants	81
---	----

Number of Reported Schools in District	8
--	---

Number of Reported Classes in District	318
--	-----

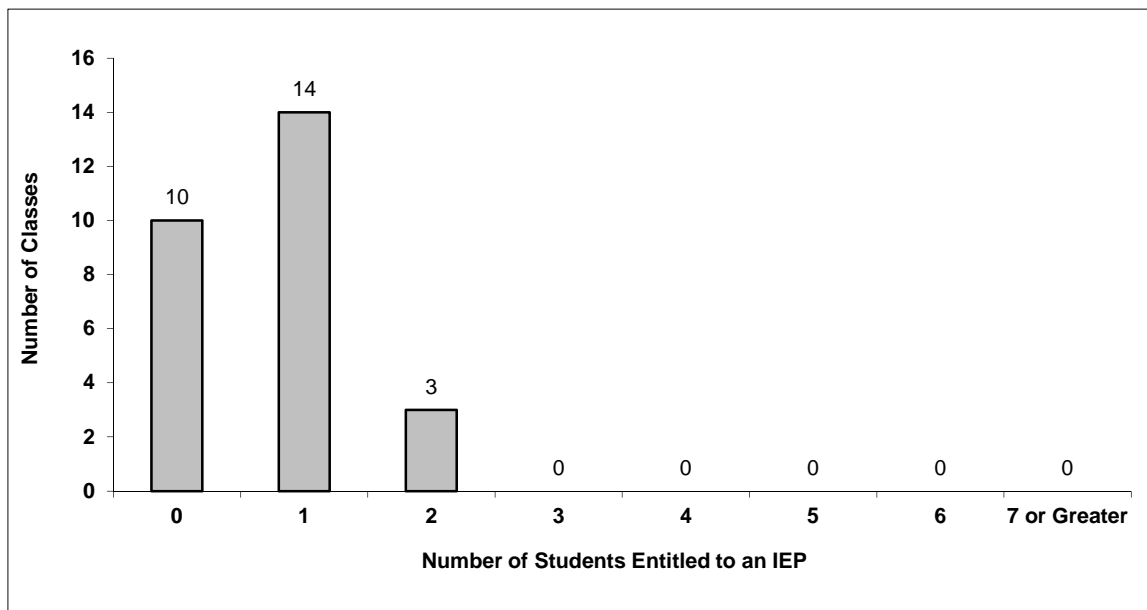
Number of Reported Classes in District with more than 30 Students	17
---	----

## District - Students Entitled to an Individual Education Plan (IEP)

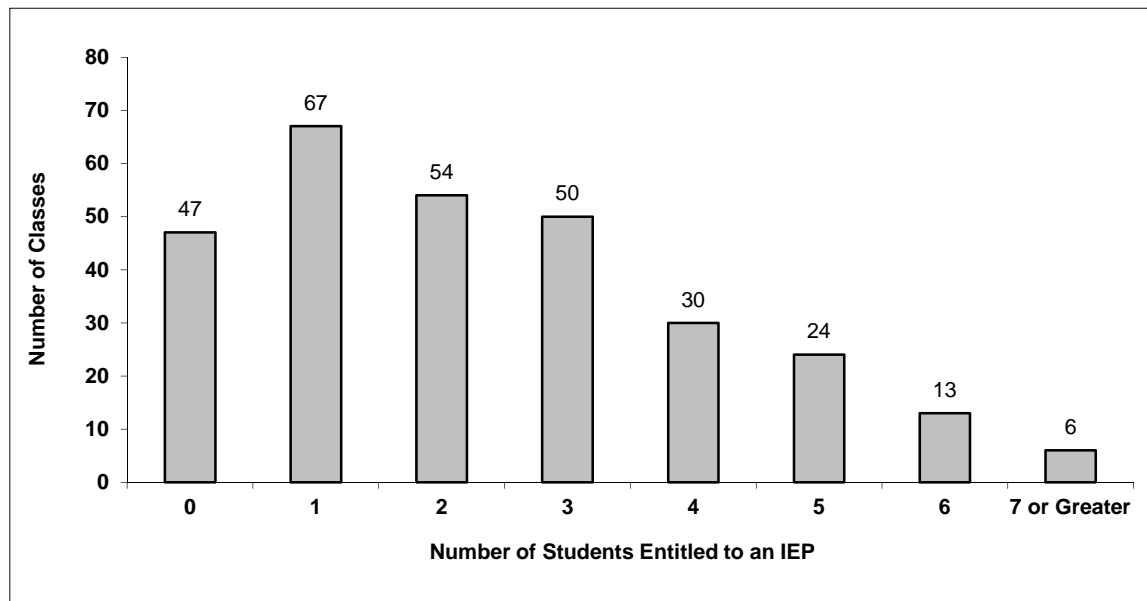
### 054 Bulkley Valley

Source: Class size data collection (as of October 31) from BC public schools.

Grades K-3 - Number of Classes in District with 'X' Number of Students Entitled to an IEP



Grades 4-12 - Number of Classes in District with 'X' Number of Students Entitled to an IEP

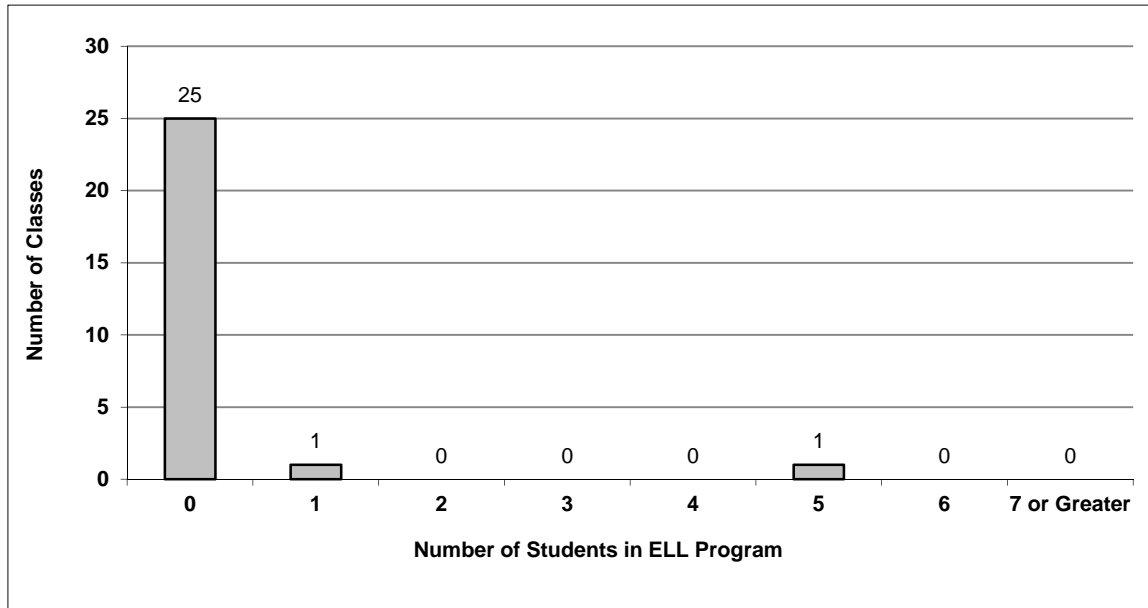


# District - English Language Learners (ELL)

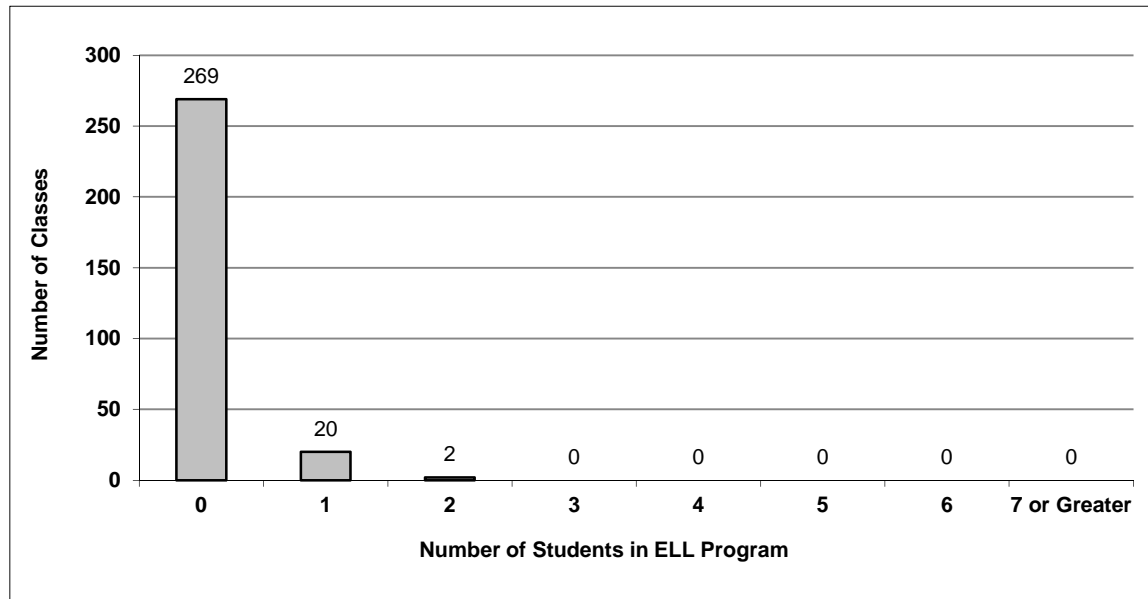
## 054 Bulkley Valley

Source: Class size data collection (as of October 31) from BC public schools.

Grades K-3 - Number of Classes in District with 'X' Number of ELL



Grades 4-12 - Number of Classes in District with 'X' Number of ELL



## 054 Bulkley Valley - Average Class Size by School

Source: Class size data collection (as of October 31) from BC public schools.

Ministry Code	School Name	Kindergarten	Grade 1 - 3	Grade 4 - 7	Grade 8 - 12
05454011	Houston Secondary	-	-	-	20.8
05454007	Lake Kathlyn Elementary	22.0	19.9	19.5	-
05454006	Muheim Memorial Elementary	19.5	20.5	22.8	-
05454004	Silverthorne Elementary	19.0	19.3	27.3	-
05454013	Smithers Secondary	-	-	-	23.7
05454005	Telkwa Elementary	17.0	18.8	18.8	-
05454012	Twain Sullivan Elementary	20.0	22.1	26.6	-
05454010	Walnut Park Elementary	20.3	21.9	24.6	-

---

## Glossary

---

Term	Definition / Notes
<b>English Language Learners (ELL)</b>	• A program offered to students whose primary language(s) is/are other than English, and who may require additional services.
<b>Grade</b>	• The assigned grade of a student on October 31.
<b>K</b>	• Kindergarten
<b>Number of Students</b>	• Student population is calculated by headcount.
<b>Student</b>	• A person enrolled in a BC school. Student populations are calculated by headcount. Students include all adult and school-aged persons who are working toward a certificate of graduation.
<b>Student Entitled to an Individual Education Plan</b>	• A student for whom an Individual Education Plan (IEP) must be designed under the Individual Education Plan order, Ministerial Order 638/95.