

Overview of Class Size and Composition in British Columbia Public Schools 2015/16

School District 051 Boundary

These class size data are current as of October 31, 2015 and have been verified by school districts.



Ministry of
Education

December 2015
Analysis and Reporting Unit

PLEASE NOTE

The Ministry makes small and continuous improvements to the quality of its data. Sometimes these changes result in differences from previously published reports. The data in this report are the most accurate data available at time of publication.

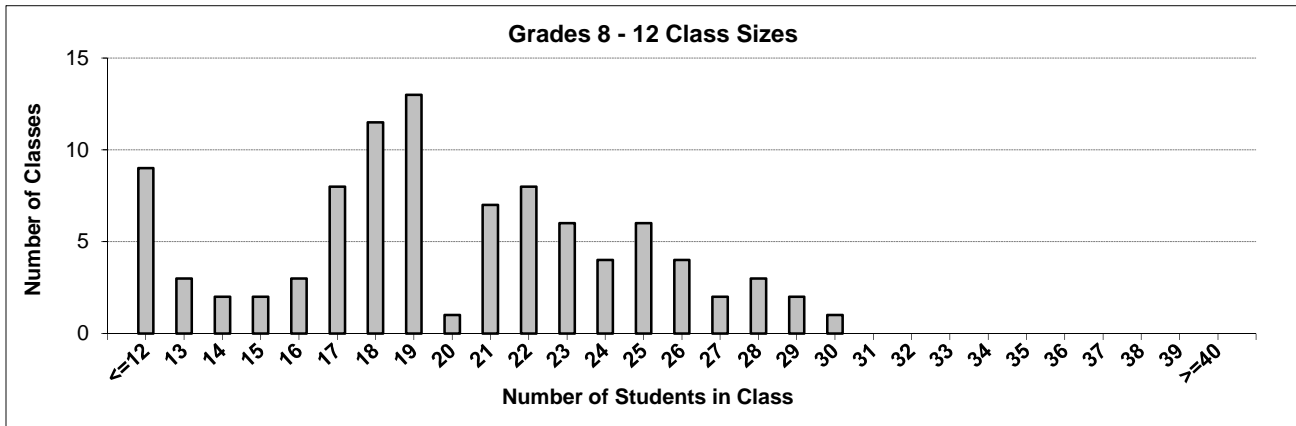
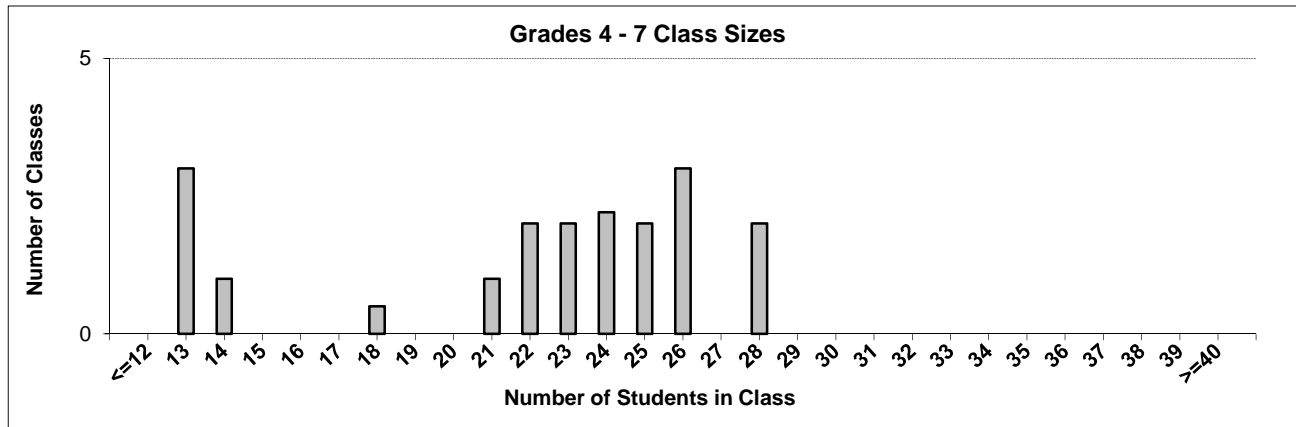
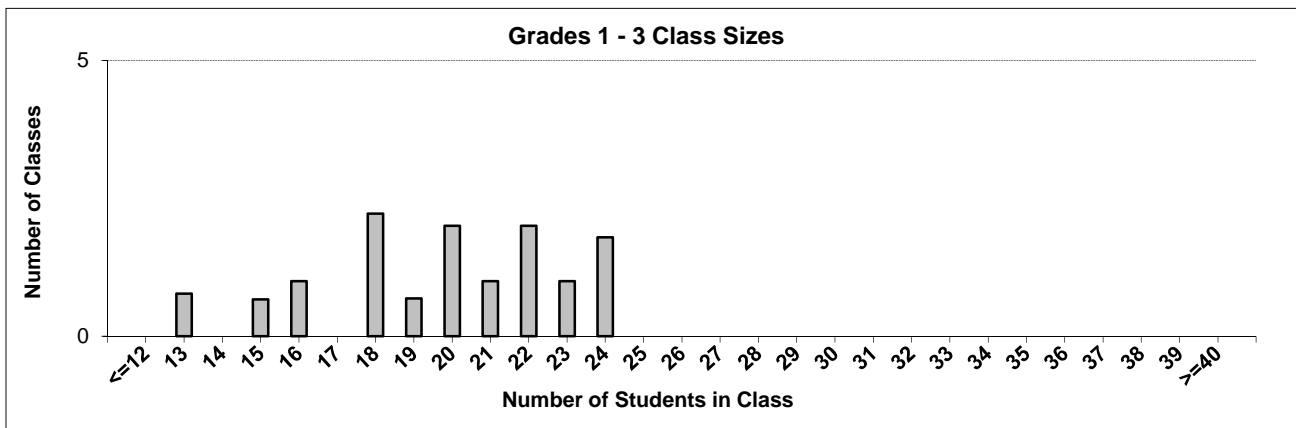
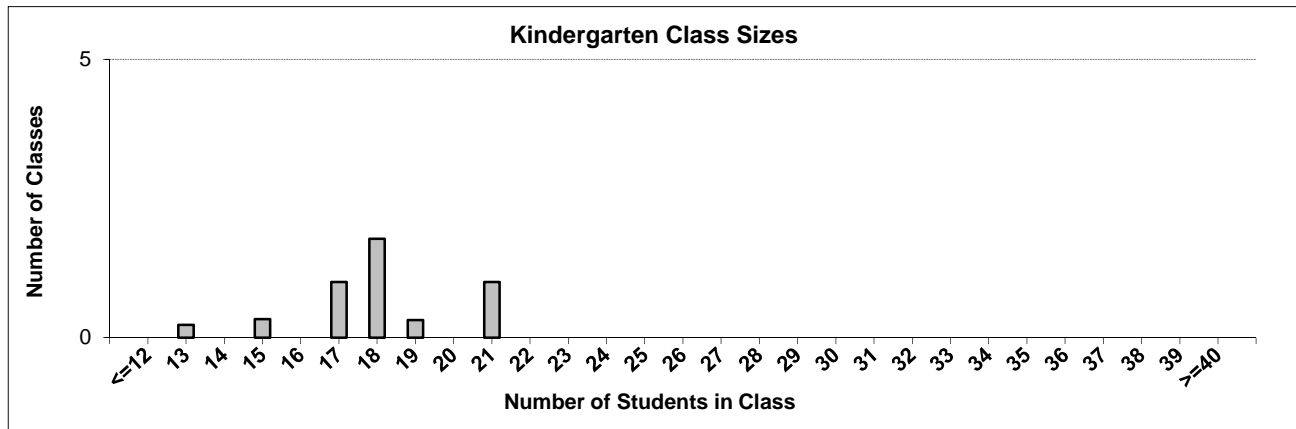
Ministry reports are available at <http://www.bced.gov.bc.ca/reporting/>

Contact the Analysis and Reporting Unit at educ.reportingunit@gov.bc.ca

District Class Sizes

051 Boundary

Source: Class size data collection (as of October 31) from BC public schools.



District - Average Class Size

051 Boundary

Source: Class size data collection (as of October 31) from BC public schools.

District - Average Class Size	Kindergarten	Grade 1 - 3	Grade 4 - 7	Grade 8 - 12
	18.0	19.8	21.9	19.7

Province - Average Class Size	Kindergarten	Grade 1 - 3	Grade 4 - 7	Grade 8 - 12
	19.7	21.8	26.0	23.4

Number of Reported Classes with Assigned Education Assistants	60
---	----

Number of Reported Schools in District	10
--	----

Number of Reported Classes in District	132
--	-----

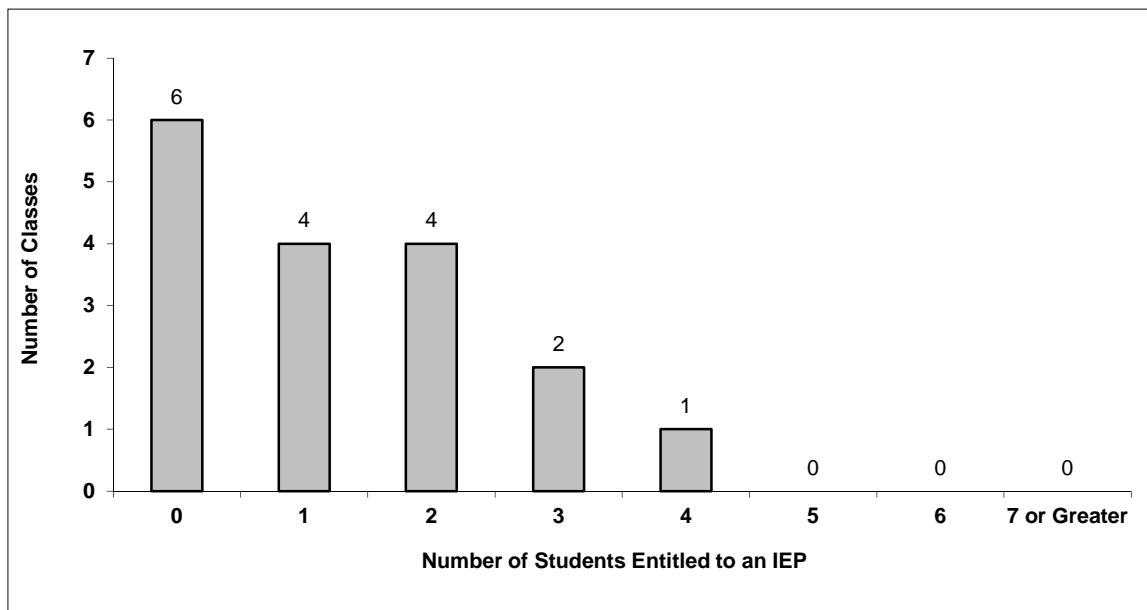
Number of Reported Classes in District with more than 30 Students	0
---	---

District - Students Entitled to an Individual Education Plan (IEP)

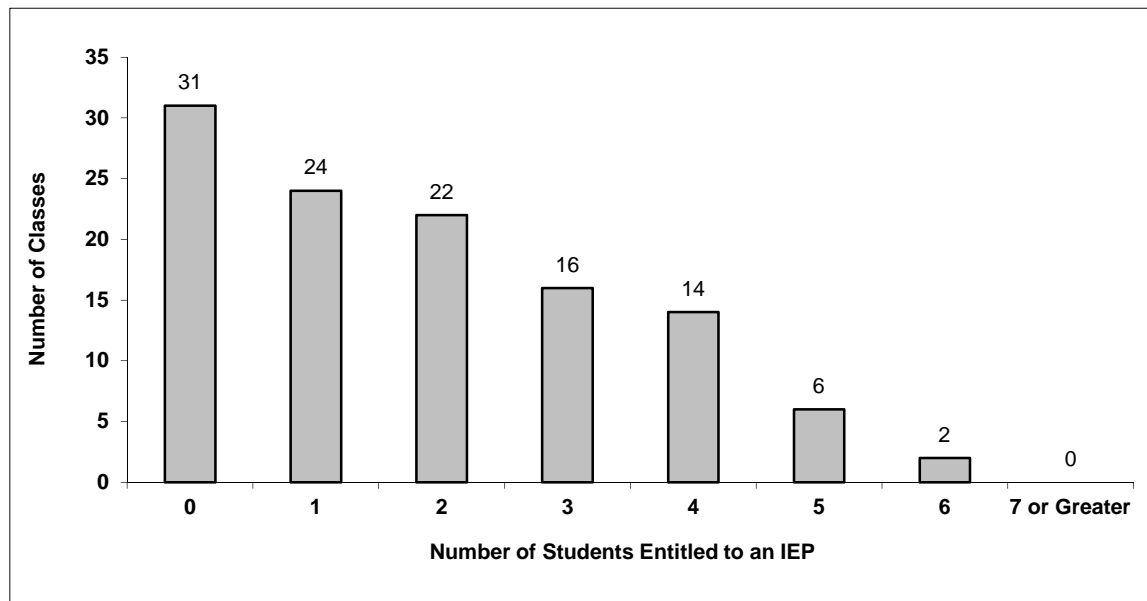
051 Boundary

Source: Class size data collection (as of October 31) from BC public schools.

Grades K-3 - Number of Classes in District with 'X' Number of Students Entitled to an IEP



Grades 4-12 - Number of Classes in District with 'X' Number of Students Entitled to an IEP

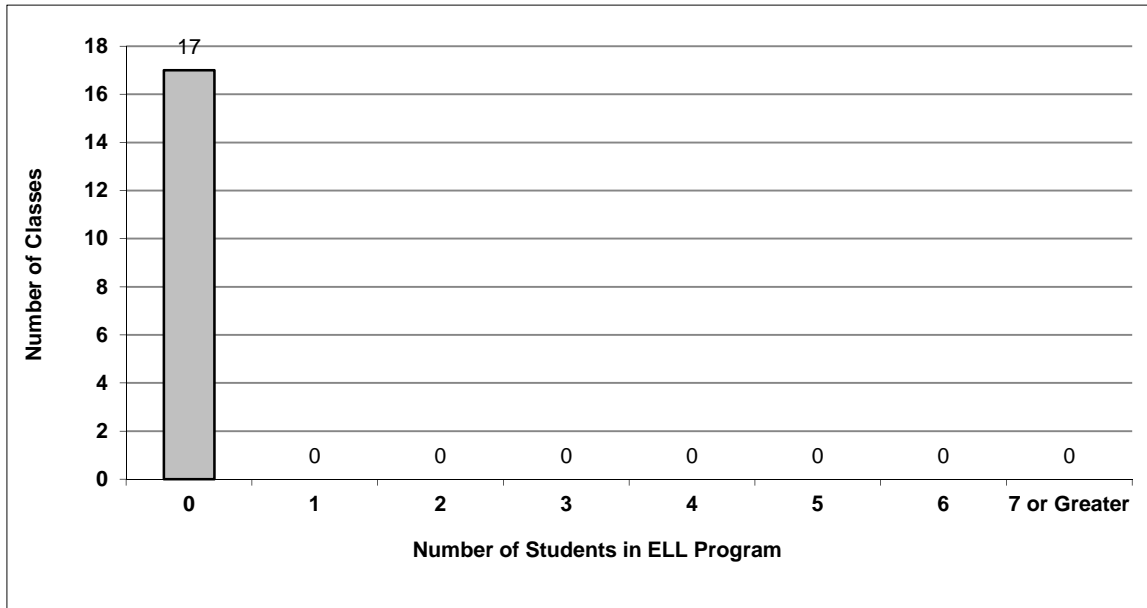


District - English Language Learners (ELL)

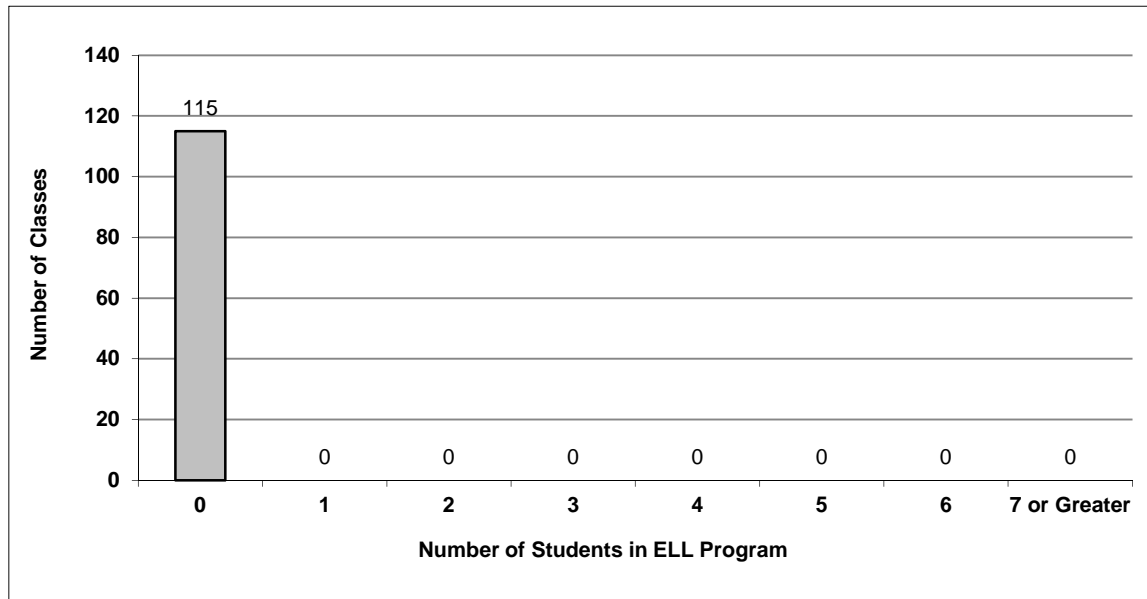
051 Boundary

Source: Class size data collection (as of October 31) from BC public schools.

Grades K-3 - Number of Classes in District with 'X' Number of ELL



Grades 4-12 - Number of Classes in District with 'X' Number of ELL



051 Boundary - Average Class Size by School

Source: Class size data collection (as of October 31) from BC public schools.

Ministry Code	School Name	Kindergarten	Grade 1 - 3	Grade 4 - 7	Grade 8 - 12
05113002	Beaverdell Elementary	15.0	15.0	-	-
05151013	Big White Community School	13.0	13.0	14.7	18.0
05113010	Boundary Central Secondary	-	-	-	18.3
05112004	Christina Lake Elementary	18.0	18.0	17.5	-
05112001	Dr D A Perley Elementary	21.0	21.0	24.2	-
05112002	Grand Forks Secondary	-	-	-	20.4
05113007	Greenwood Elementary	-	-	13.0	-
05112005	John A. Hutton Elementary	17.5	22.8	24.9	-
05113005	Midway Elementary	18.0	16.8	-	-
05113012	West Boundary Elementary	19.0	20.6	25.5	-

Glossary

Term	Definition / Notes
English Language Learners (ELL)	<ul style="list-style-type: none">• A program offered to students whose primary language(s) is/are other than English, and who may require additional services.
Grade	<ul style="list-style-type: none">• The assigned grade of a student on October 31.
K	<ul style="list-style-type: none">• Kindergarten
Number of Students	<ul style="list-style-type: none">• Student population is calculated by headcount.
Student	<ul style="list-style-type: none">• A person enrolled in a BC school. Student populations are calculated by headcount. Students include all adult and school-aged persons who are working toward a certificate of graduation.
Student Entitled to an Individual Education Plan	<ul style="list-style-type: none">• A student for whom an Individual Education Plan (IEP) must be designed under the Individual Education Plan order, Ministerial Order 638/95.