

# Overview of Class Size and Composition in British Columbia Public Schools 2015/16

## School District 050 Haida Gwaii

These class size data are current as of October 31, 2015 and have been verified by school districts.



Ministry of  
Education

December 2015  
Analysis and Reporting Unit

---

**PLEASE NOTE**

The Ministry makes small and continuous improvements to the quality of its data. Sometimes these changes result in differences from previously published reports. The data in this report are the most accurate data available at time of publication.

Ministry reports are available at <http://www.bced.gov.bc.ca/reporting/>

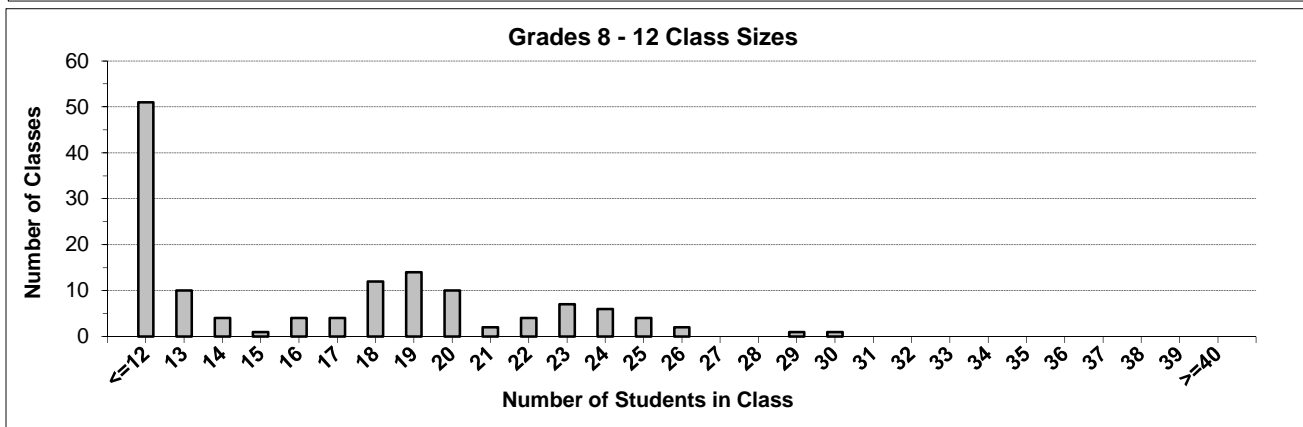
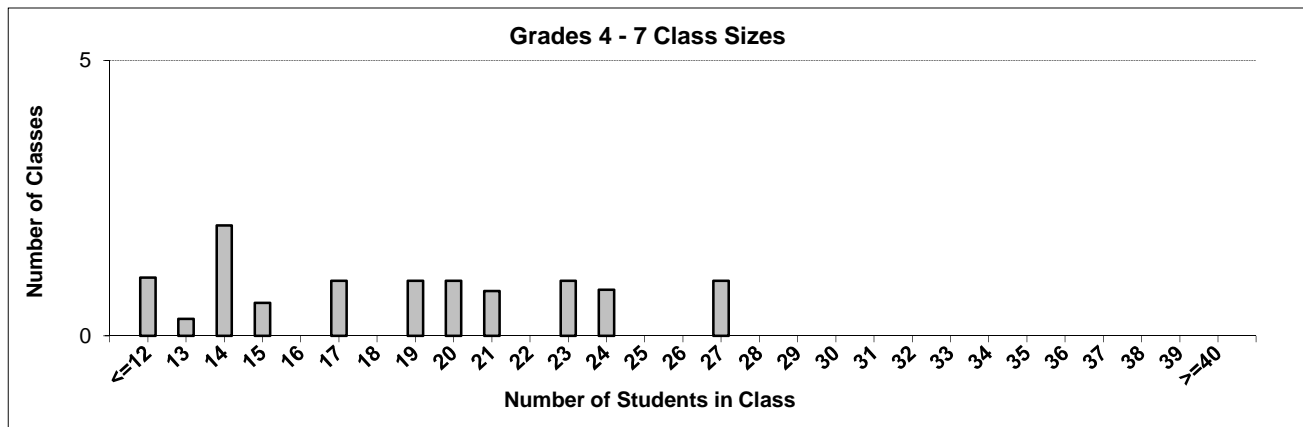
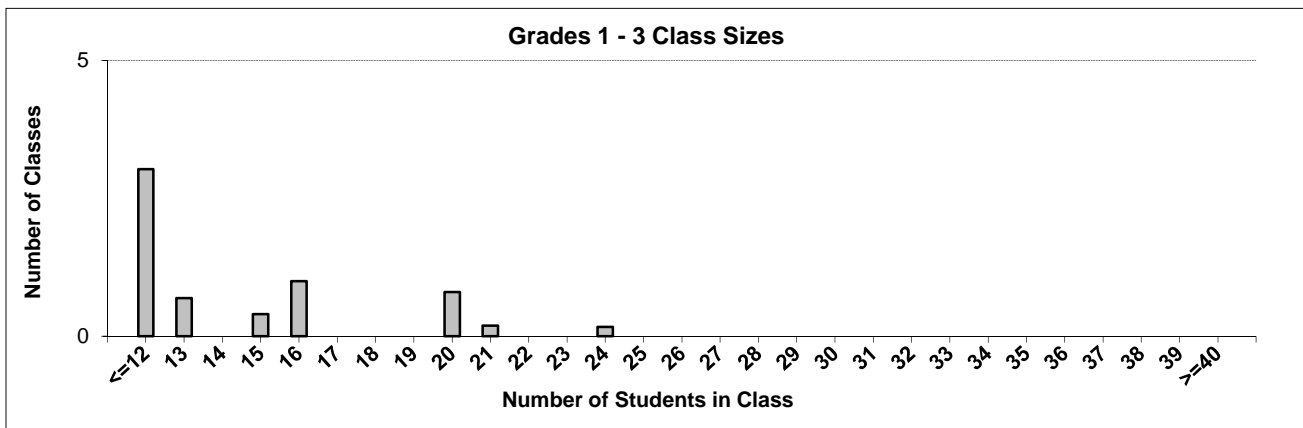
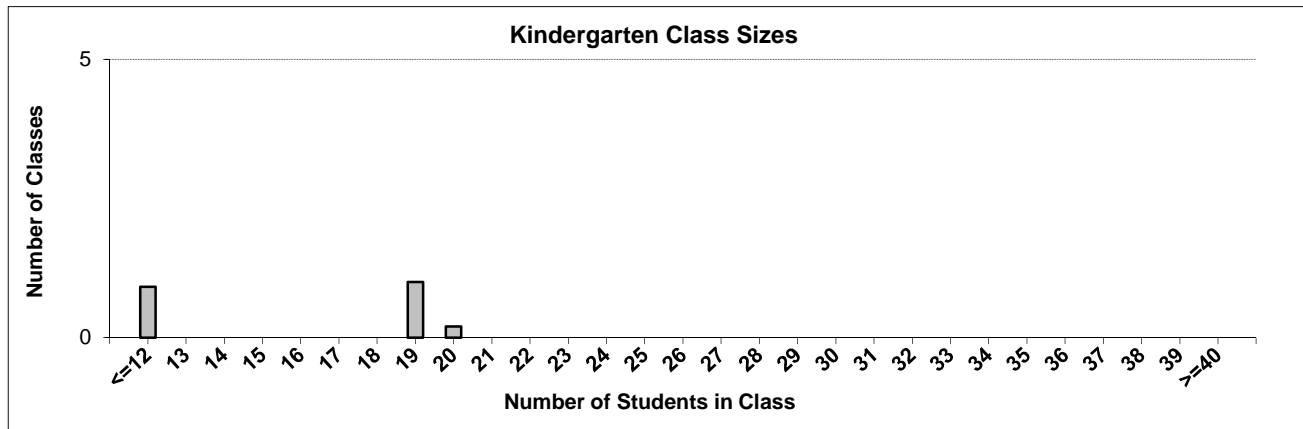
Contact the Analysis and Reporting Unit at [educ.reportingunit@gov.bc.ca](mailto:educ.reportingunit@gov.bc.ca)

---

# District Class Sizes

## 050 Haida Gwaii

Source: Class size data collection (as of October 31) from BC public schools.



---

## District - Average Class Size

---

### 050 Haida Gwaii

Source: Class size data collection (as of October 31) from BC public schools.

District - Average Class Size	Kindergarten	Grade 1 - 3	Grade 4 - 7	Grade 8 - 12
	15.1	13.4	18.2	15.2

Province - Average Class Size	Kindergarten	Grade 1 - 3	Grade 4 - 7	Grade 8 - 12
	19.7	21.8	26.0	23.4

Number of Reported Classes with Assigned Education Assistants	55
---	----

Number of Reported Schools in District	6
--	---

Number of Reported Classes in District	156
--	-----

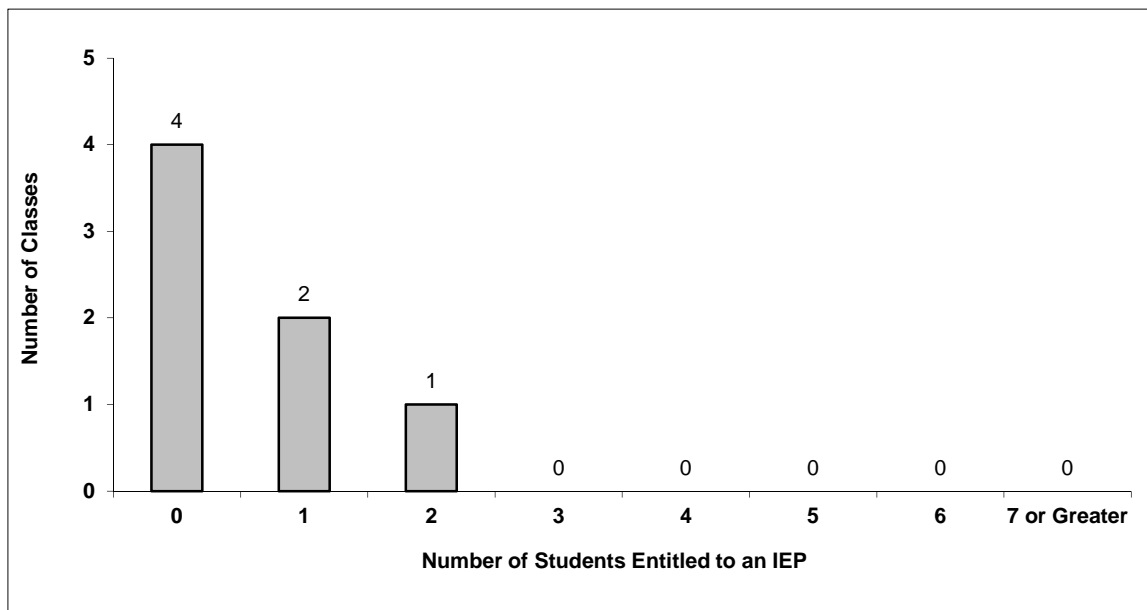
Number of Reported Classes in District with more than 30 Students	0
---	---

## District - Students Entitled to an Individual Education Plan (IEP)

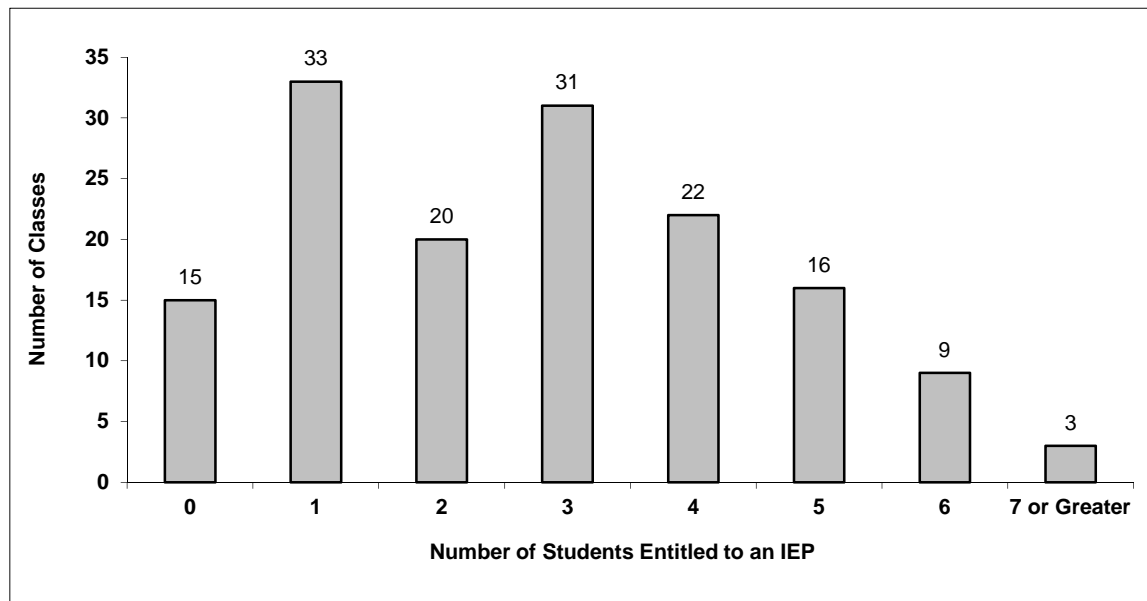
### 050 Haida Gwaii

Source: Class size data collection (as of October 31) from BC public schools.

Grades K-3 - Number of Classes in District with 'X' Number of Students Entitled to an IEP



Grades 4-12 - Number of Classes in District with 'X' Number of Students Entitled to an IEP

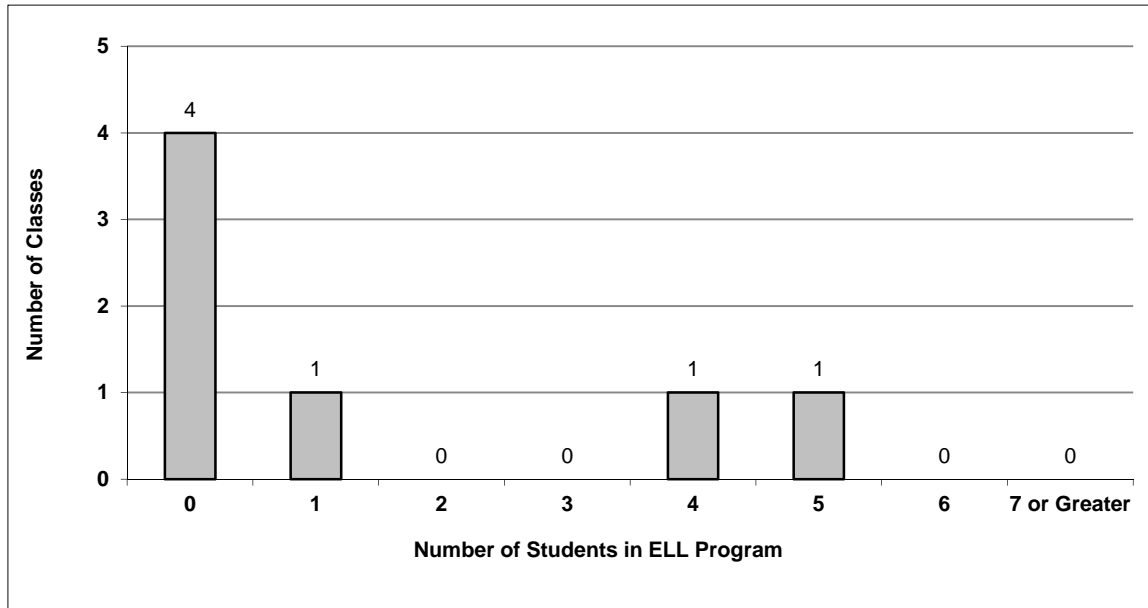


# District - English Language Learners (ELL)

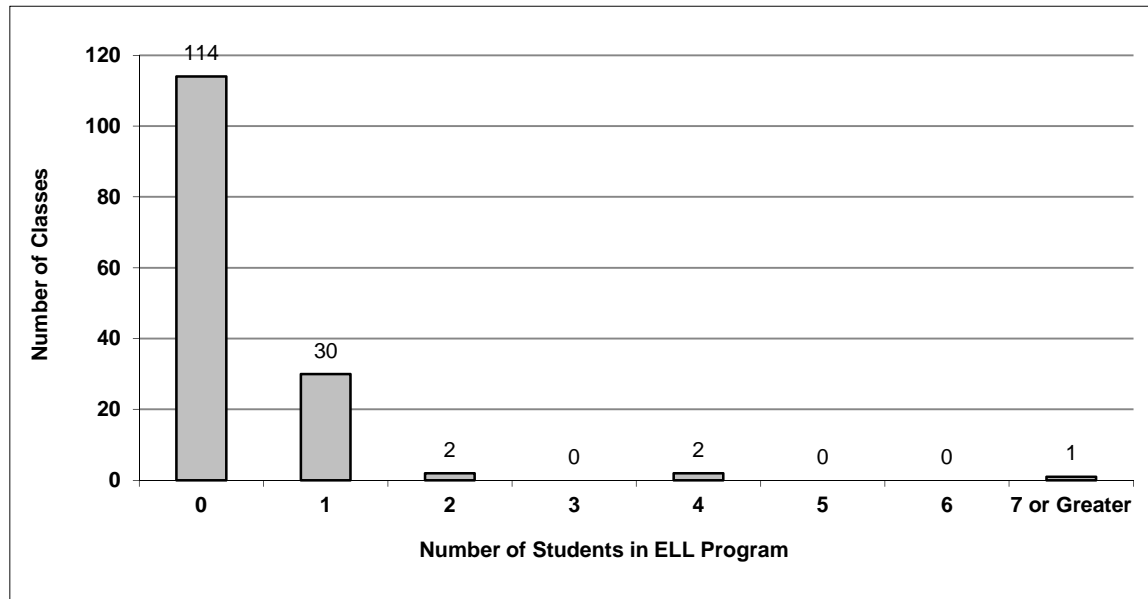
## 050 Haida Gwaii

Source: Class size data collection (as of October 31) from BC public schools.

Grades K-3 - Number of Classes in District with 'X' Number of ELL



Grades 4-12 - Number of Classes in District with 'X' Number of ELL



---

## 050 Haida Gwaii - Average Class Size by School

---

Source: Class size data collection (as of October 31) from BC public schools.

Ministry Code	School Name	Kindergarten	Grade 1 - 3	Grade 4 - 7	Grade 8 - 12
05050004	Agnes L Mathers Elementary Secondary	12.0	12.0	16.3	-
05050001	George M Dawson Secondary	-	-	-	14.1
05050002	Port Clements Elementary	9.0	9.0	14.1	-
05050012	Queen Charlotte Secondary	-	-	-	16.3
05050011	Sk'aadгаа Naay Elementary	19.2	17.6	19.5	-
05050008	Tahayghen Elementary	9.0	11.0	20.4	-

---

## Glossary

---

Term	Definition / Notes
English Language Learners (ELL)	<ul style="list-style-type: none"><li>• A program offered to students whose primary language(s) is/are other than English, and who may require additional services.</li></ul>
Grade	<ul style="list-style-type: none"><li>• The assigned grade of a student on October 31.</li></ul>
K	<ul style="list-style-type: none"><li>• Kindergarten</li></ul>
Number of Students	<ul style="list-style-type: none"><li>• Student population is calculated by headcount.</li></ul>
Student	<ul style="list-style-type: none"><li>• A person enrolled in a BC school. Student populations are calculated by headcount. Students include all adult and school-aged persons who are working toward a certificate of graduation.</li></ul>
Student Entitled to an Individual Education Plan	<ul style="list-style-type: none"><li>• A student for whom an Individual Education Plan (IEP) must be designed under the Individual Education Plan order, Ministerial Order 638/95.</li></ul>