

Overview of Class Size and Composition in British Columbia Public Schools 2015/16

School District 045 West Vancouver

These class size data are current as of October 31, 2015 and have been verified by school districts.



Ministry of
Education

December 2015
Analysis and Reporting Unit

PLEASE NOTE

The Ministry makes small and continuous improvements to the quality of its data. Sometimes these changes result in differences from previously published reports. The data in this report are the most accurate data available at time of publication.

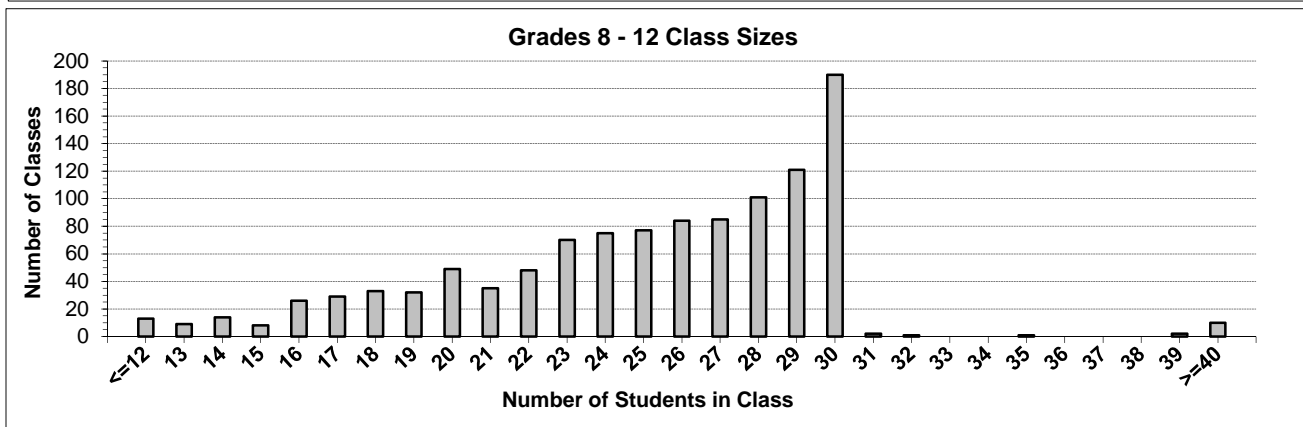
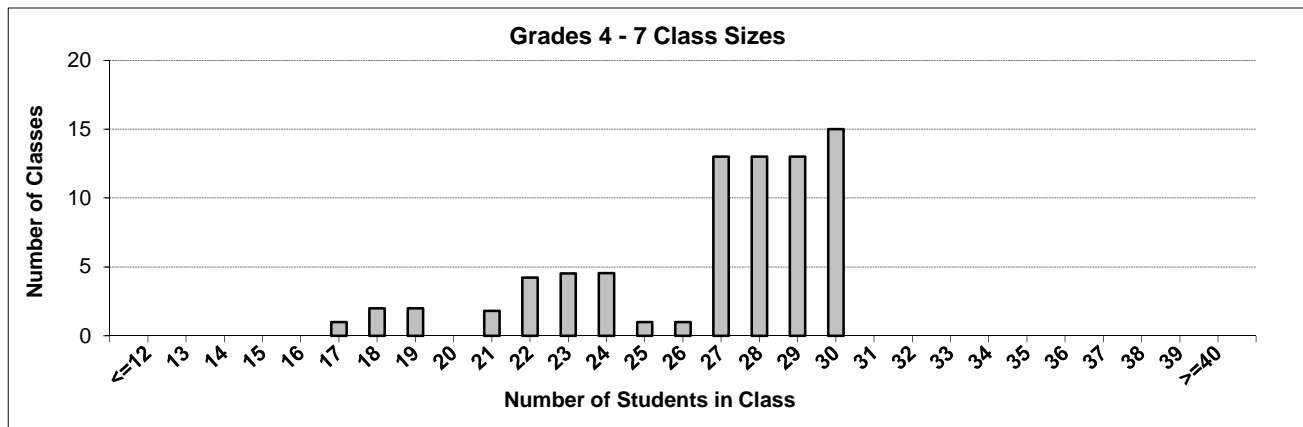
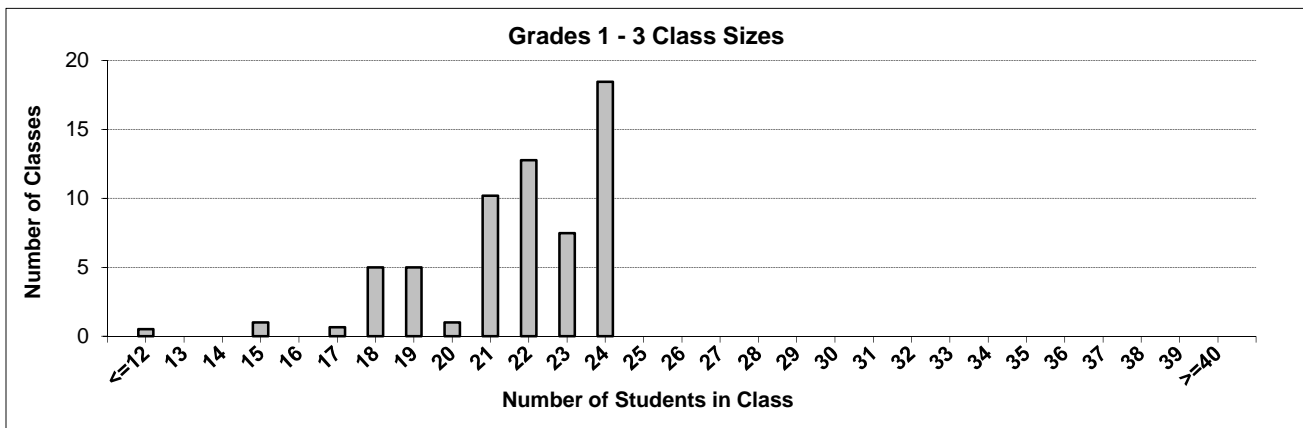
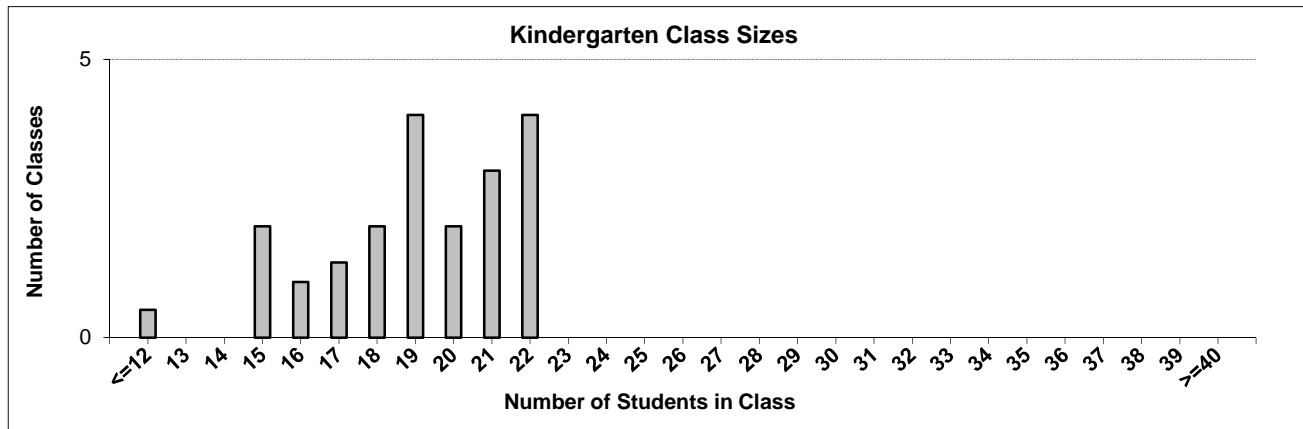
Ministry reports are available at <http://www.bced.gov.bc.ca/reporting/>

Contact the Analysis and Reporting Unit at educ.reportingunit@gov.bc.ca

District Class Sizes

045 West Vancouver

Source: Class size data collection (as of October 31) from BC public schools.



District - Average Class Size

045 West Vancouver

Source: Class size data collection (as of October 31) from BC public schools.

District - Average Class Size	Kindergarten	Grade 1 - 3	Grade 4 - 7	Grade 8 - 12
	19.0	21.7	26.6	25.2

Province - Average Class Size	Kindergarten	Grade 1 - 3	Grade 4 - 7	Grade 8 - 12
	19.7	21.8	26.0	23.4

Number of Reported Classes with Assigned Education Assistants	273
---	-----

Number of Reported Schools in District	17
--	----

Number of Reported Classes in District	1,273
--	-------

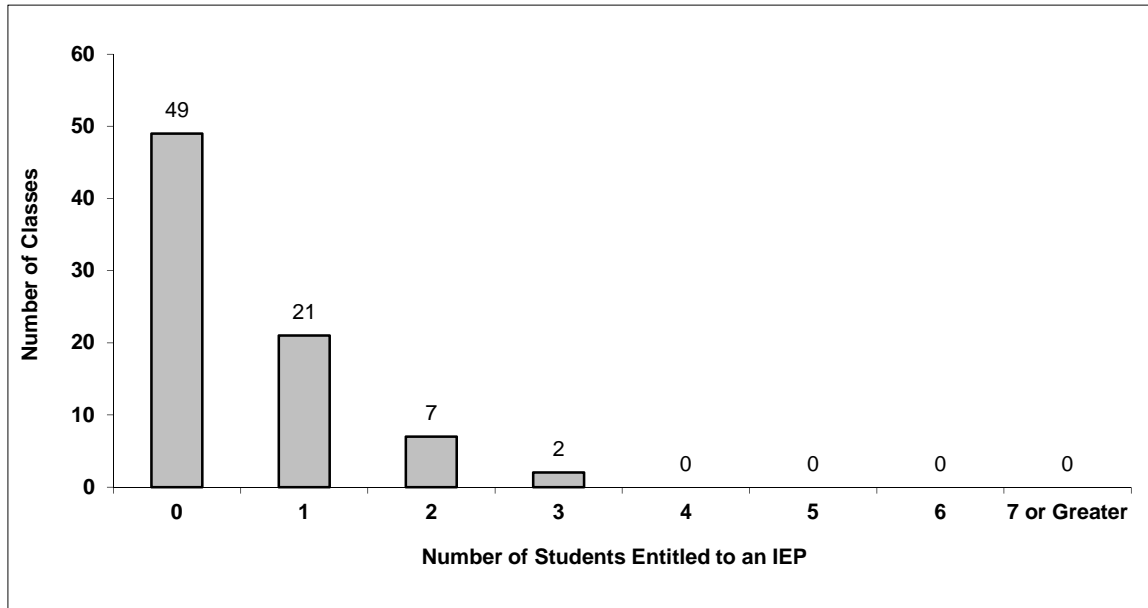
Number of Reported Classes in District with more than 30 Students	16
---	----

District - Students Entitled to an Individual Education Plan (IEP)

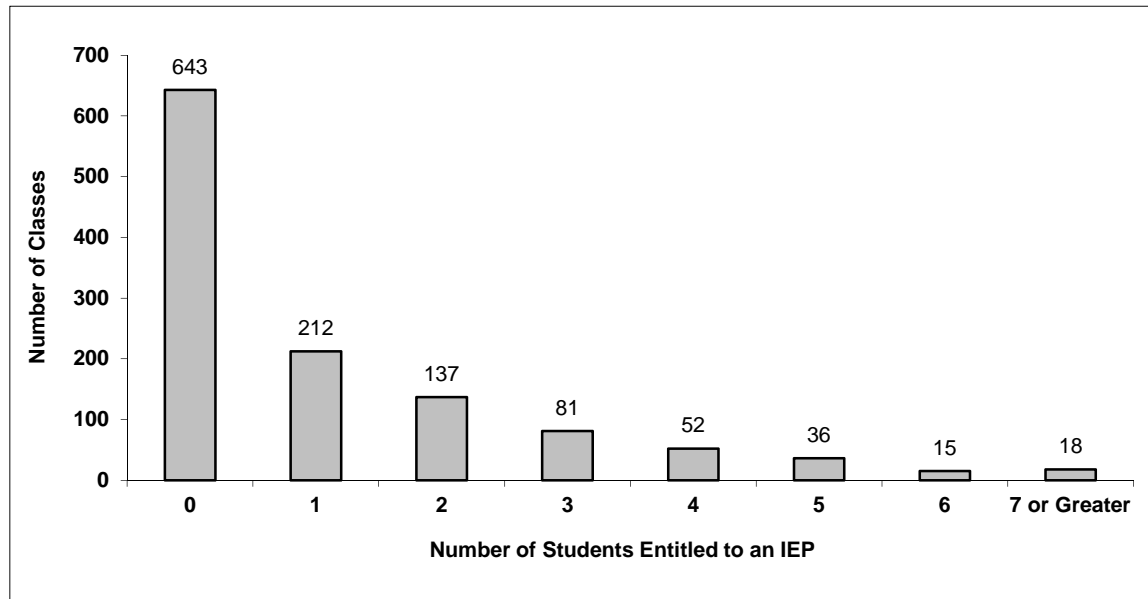
045 West Vancouver

Source: Class size data collection (as of October 31) from BC public schools.

Grades K-3 - Number of Classes in District with 'X' Number of Students Entitled to an IEP



Grades 4-12 - Number of Classes in District with 'X' Number of Students Entitled to an IEP

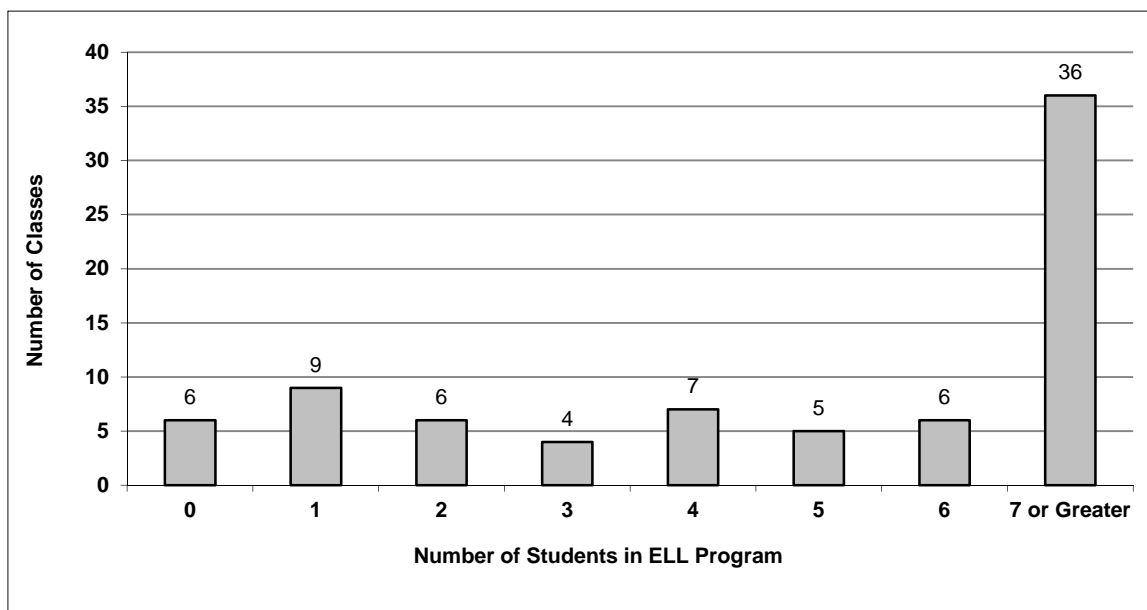


District - English Language Learners (ELL)

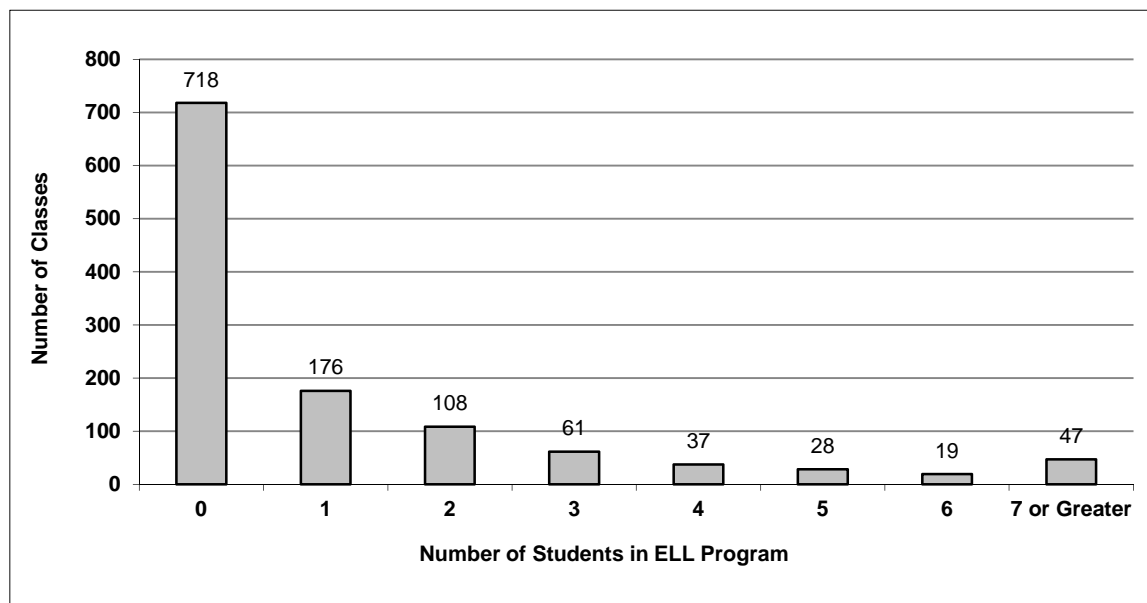
045 West Vancouver

Source: Class size data collection (as of October 31) from BC public schools.

Grades K-3 - Number of Classes in District with 'X' Number of ELL



Grades 4-12 - Number of Classes in District with 'X' Number of ELL



045 West Vancouver - Average Class Size by School

Source: Class size data collection (as of October 31) from BC public schools.

Ministry Code	School Name	Kindergarten	Grade 1 - 3	Grade 4 - 7	Grade 8 - 12
04545019	Bowen Island Community School	20.0	22.1	25.4	-
04545020	Caulfeild Elementary	14.0	19.6	28.1	-
04545030	Chartwell Elementary	22.0	22.9	27.5	-
04545035	Cypress Park Primary	15.0	17.0	-	-
04545040	Eagle Harbour Montessori	17.0	22.0	18.0	-
04545025	Ecole Cedardale	22.0	22.5	25.6	-
04545065	Ecole Pauline Johnson Elementary	21.5	23.0	22.3	-
04545045	Gleneagles Elementary	16.0	22.3	28.2	-
04545055	Hollyburn Elementary	21.0	19.0	27.3	-
04545060	Irwin Park Elementary	18.5	23.5	27.1	-
04545062	Lions Bay Community School	17.0	17.6	-	-
04545070	Ridgeview Elementary	21.5	23.5	29.3	-
04545081	Rockridge Secondary	-	-	-	25.1
04545010	Sentinel Secondary	-	-	-	25.2
04545075	West Bay Elementary	19.0	21.5	29.0	-
04545015	West Vancouver Secondary	-	-	-	25.2
04545080	Westcot Elementary	18.5	23.3	26.1	-

Glossary

Term	Definition / Notes
English Language Learners (ELL)	• A program offered to students whose primary language(s) is/are other than English, and who may require additional services.
Grade	• The assigned grade of a student on October 31.
K	• Kindergarten
Number of Students	• Student population is calculated by headcount.
Student	• A person enrolled in a BC school. Student populations are calculated by headcount. Students include all adult and school-aged persons who are working toward a certificate of graduation.
Student Entitled to an Individual Education Plan	• A student for whom an Individual Education Plan (IEP) must be designed under the Individual Education Plan order, Ministerial Order 638/95.