

Overview of Class Size and Composition in British Columbia Public Schools 2015/16

School District 043 Coquitlam

These class size data are current as of October 31, 2015 and have been verified by school districts.



Ministry of
Education

December 2015
Analysis and Reporting Unit

PLEASE NOTE

The Ministry makes small and continuous improvements to the quality of its data. Sometimes these changes result in differences from previously published reports. The data in this report are the most accurate data available at time of publication.

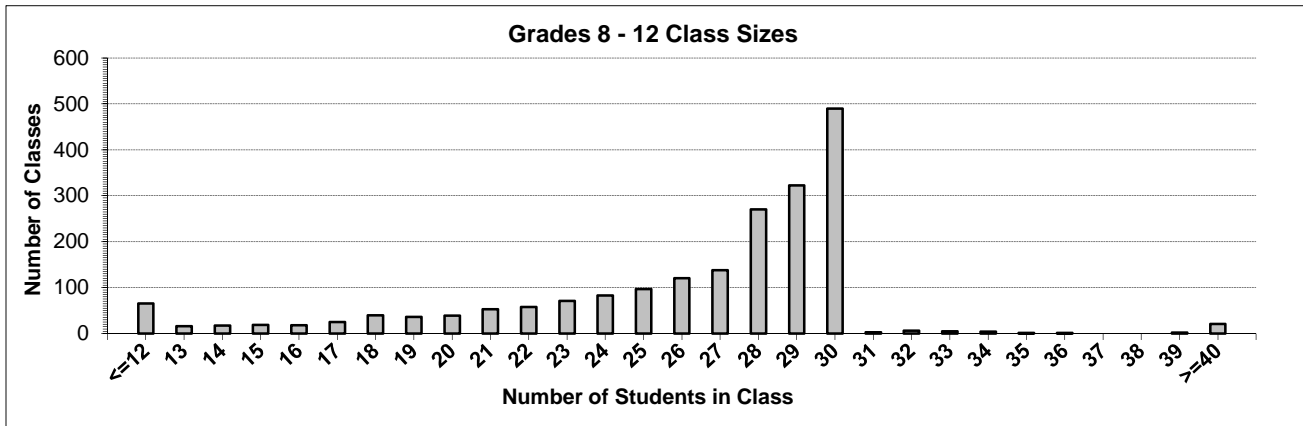
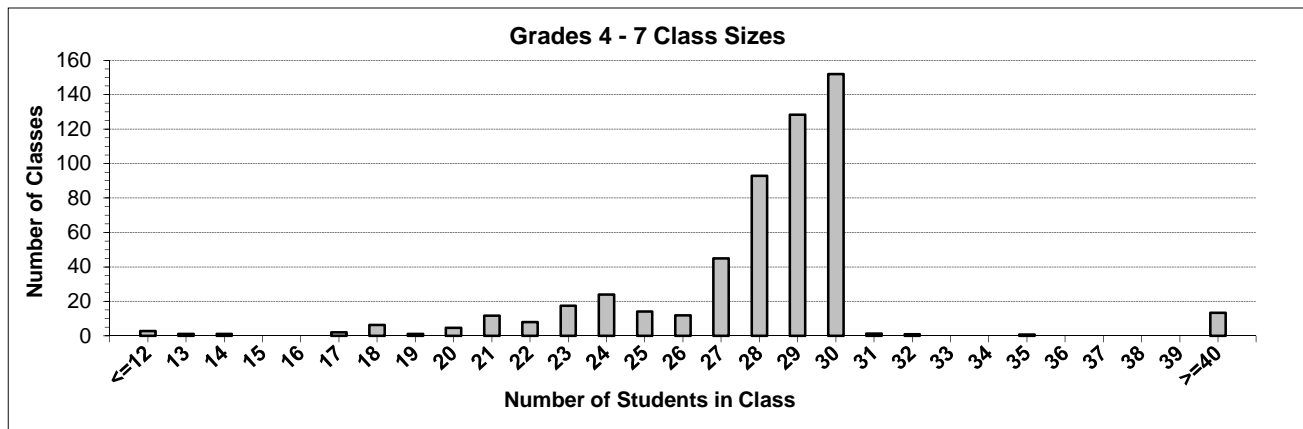
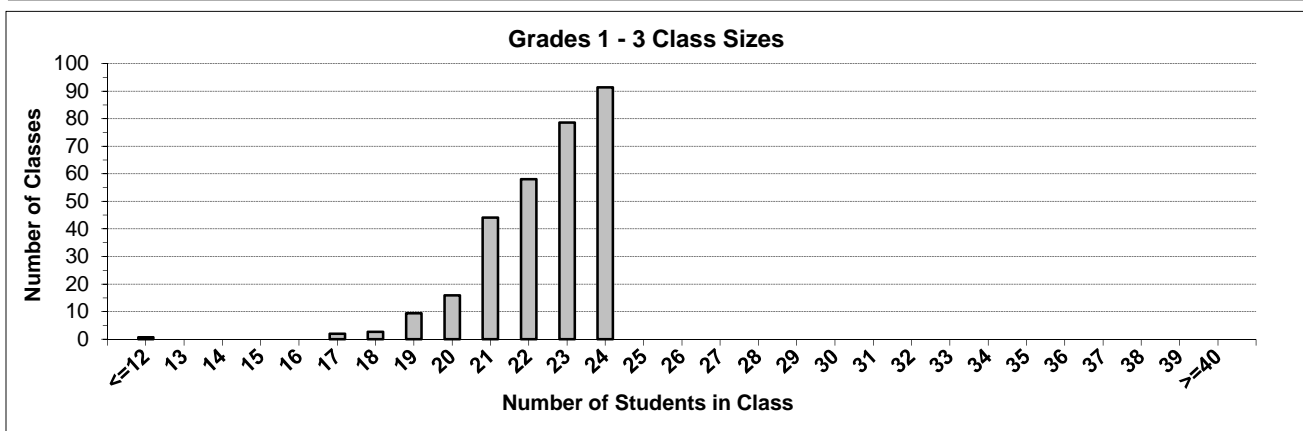
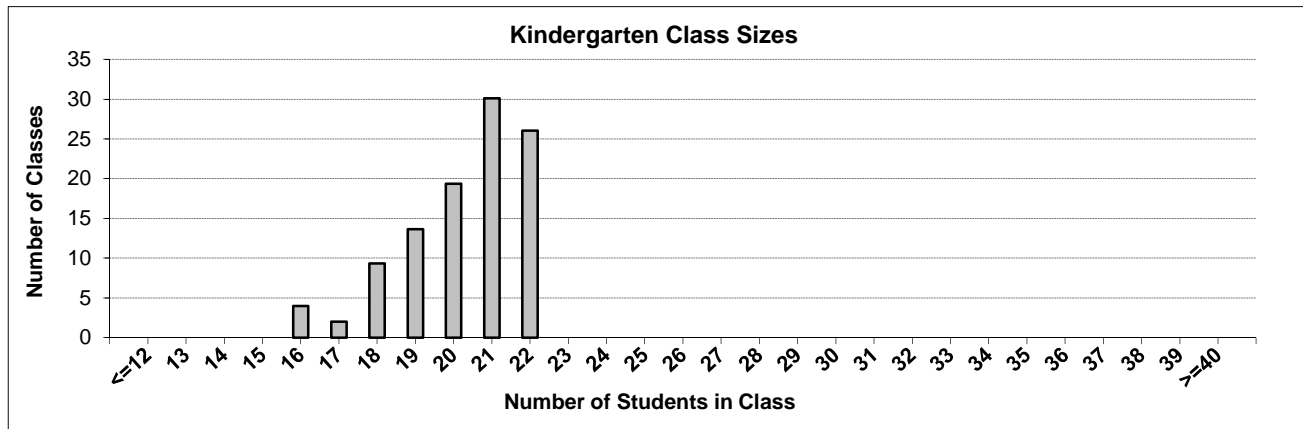
Ministry reports are available at <http://www.bced.gov.bc.ca/reporting/>

Contact the Analysis and Reporting Unit at educ.reportingunit@gov.bc.ca

District Class Sizes

043 Coquitlam

Source: Class size data collection (as of October 31) from BC public schools.



District - Average Class Size

043 Coquitlam

Source: Class size data collection (as of October 31) from BC public schools.

District - Average Class Size	Kindergarten	Grade 1 - 3	Grade 4 - 7	Grade 8 - 12
	20.3	22.4	28.6	26.2

Province - Average Class Size	Kindergarten	Grade 1 - 3	Grade 4 - 7	Grade 8 - 12
	19.7	21.8	26.0	23.4

Number of Reported Classes with Assigned Education Assistants	635
---	-----

Number of Reported Schools in District	68
--	----

Number of Reported Classes in District	2,968
--	-------

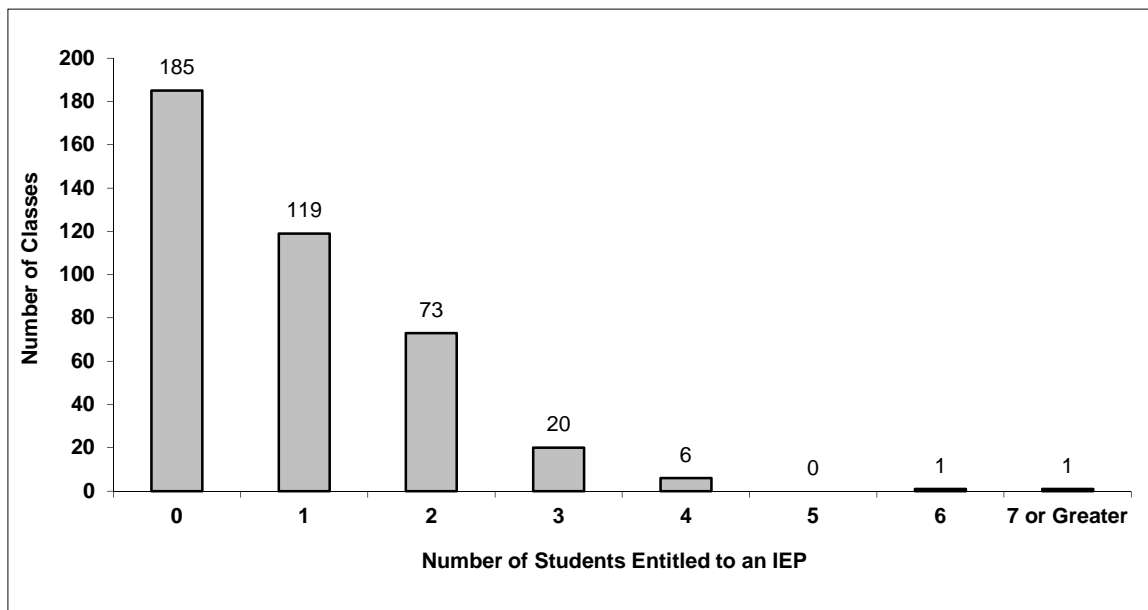
Number of Reported Classes in District with more than 30 Students	59
---	----

District - Students Entitled to an Individual Education Plan (IEP)

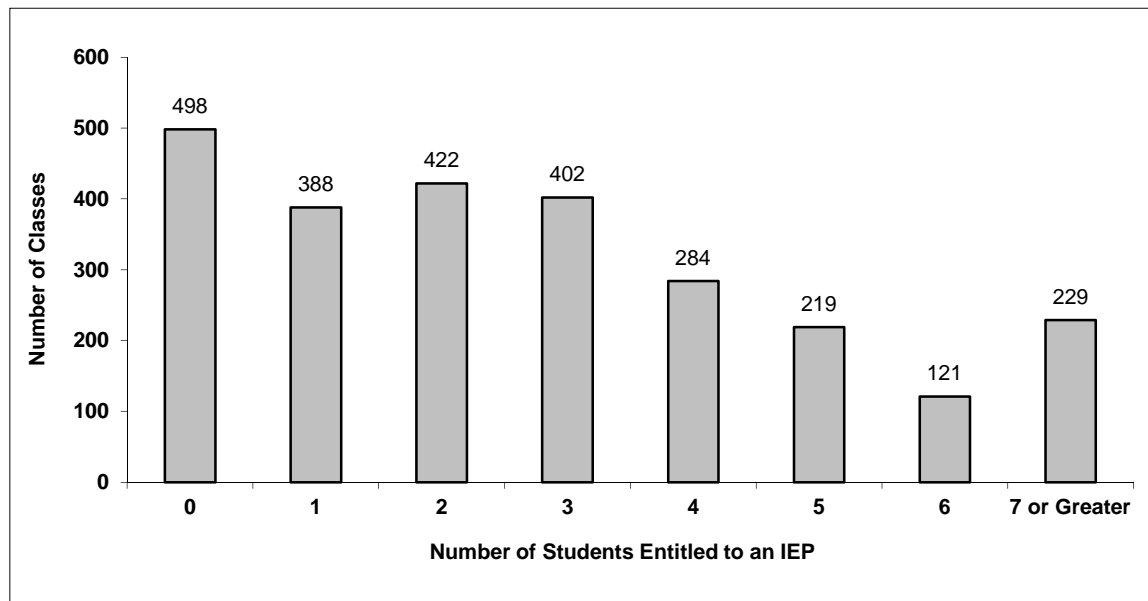
043 Coquitlam

Source: Class size data collection (as of October 31) from BC public schools.

Grades K-3 - Number of Classes in District with 'X' Number of Students Entitled to an IEP



Grades 4-12 - Number of Classes in District with 'X' Number of Students Entitled to an IEP

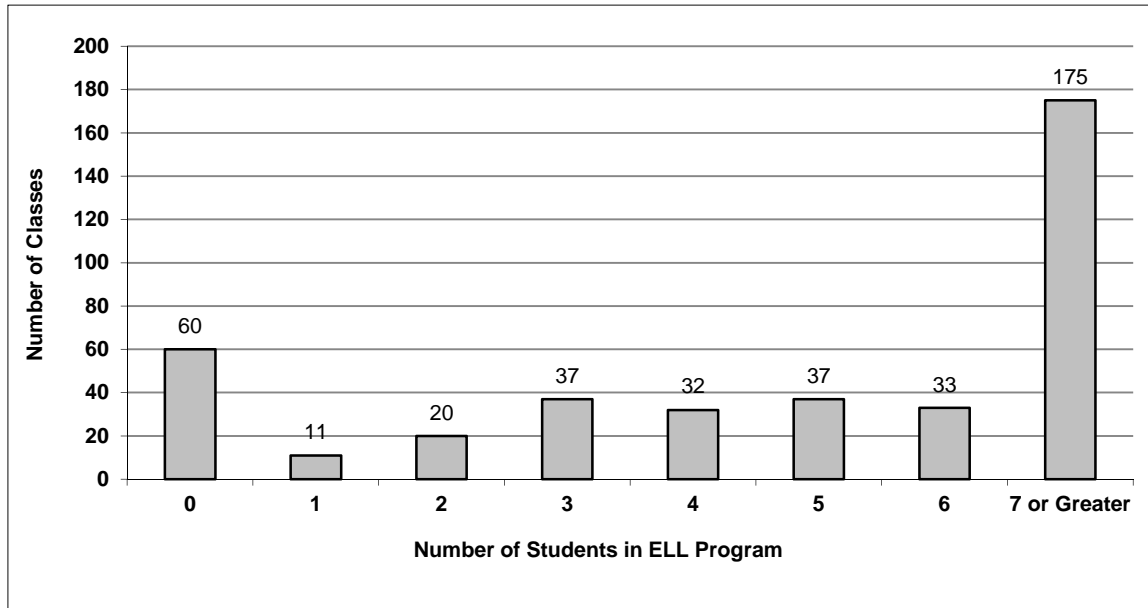


District - English Language Learners (ELL)

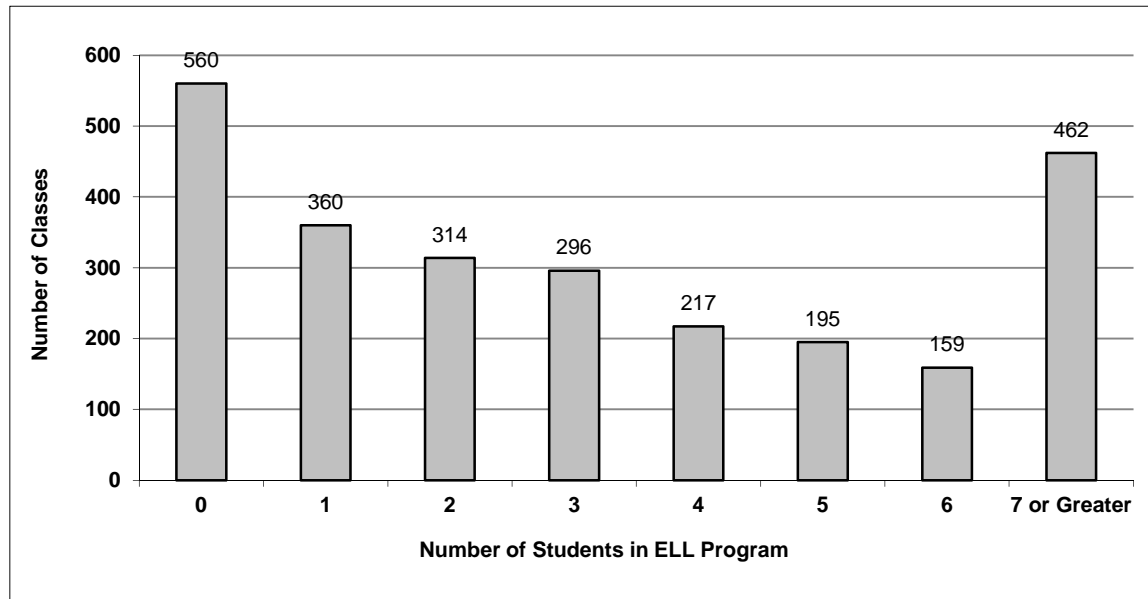
043 Coquitlam

Source: Class size data collection (as of October 31) from BC public schools.

Grades K-3 - Number of Classes in District with 'X' Number of ELL



Grades 4-12 - Number of Classes in District with 'X' Number of ELL



043 Coquitlam - Average Class Size by School

Source: Class size data collection (as of October 31) from BC public schools.

Ministry Code	School Name	Kindergarten	Grade 1 - 3	Grade 4 - 7	Grade 8 - 12
04343004	Alderson Elementary	18.5	21.9	27.4	-
04343002	Anmore Elementary	22.0	21.7	28.5	-
04343071	Aspenwood Elementary	21.4	23.3	27.1	-
04343005	Baker Drive Elementary	20.8	22.0	24.5	-
04343093	Banting Middle School	-	-	29.0	28.6
04343006	Birchland Elementary	21.0	19.8	29.5	-
04343074	Blakeburn Elementary	19.7	22.7	28.5	-
04343009	Bramblewood Elementary	21.0	22.3	29.3	-
04343010	Cape Horn Elementary	19.5	24.0	28.6	-
04343072	Castle Park Elementary	21.0	22.7	30.0	-
04343011	Cedar Drive Elementary	20.5	22.5	29.0	-
04343076	Centennial School	-	-	-	25.8
04343012	Central Elementary	20.7	22.2	27.0	-
04343102	Citadel Middle School	-	-	24.2	23.6
04343078	Como Lake Middle School	-	-	28.9	28.4
04343013	Coquitlam River Elementary	20.6	21.6	27.9	-
04343080	Dr Charles Best Secondary	-	-	-	26.9
04343110	Eagle Mountain Middle School	-	-	29.8	29.6
04343020	Eagle Ridge Elementary	20.0	23.7	28.5	-
04343053	Ecole Porter Street Elementary	20.0	22.4	26.1	-
04343018	Glen Elementary	20.3	22.4	27.9	-
04343019	Glenayre Elementary	18.3	22.5	28.3	-
04343125	Gleneagle Secondary	-	-	-	25.6
04343073	Hampton Park Elementary	19.0	22.5	27.6	-
04343021	Harbour View Elementary	21.5	21.7	24.9	-
04343022	Hazel Trembath Elementary	21.0	21.5	27.5	-
04343017	Heritage Mountain Elementary	22.0	23.5	29.6	-
04343127	Heritage Woods Secondary	-	-	-	26.9
04343024	Hillcrest Middle School	-	-	29.8	29.5
04343030	Inquiry Hub	-	-	-	13.5
04343027	Irvine Elementary	21.2	21.5	28.6	-
04343029	James Park Elementary	22.0	22.6	25.1	-
04343031	Kilmer Elementary	19.0	22.1	24.8	-
04343108	Kwayquitlum Middle School	-	-	31.6	31.7
04343033	Leigh Elementary	21.4	22.6	28.3	-
04343034	Lord Baden-Powell Elementary	18.8	22.4	26.8	-
04343081	Maillard Middle School	-	-	32.6	30.9
04343091	Maple Creek Middle School	-	-	27.7	30.5
04343036	Mary Hill Elementary	19.0	21.5	26.5	-
04343037	Meadowbrook Elementary	20.1	21.9	26.2	-
04343038	Miller Park Community School	21.0	23.4	27.7	-
04343090	Minnekhada Middle School	-	-	27.8	28.5
04343084	Montgomery Middle School	-	-	27.0	27.3
04343043	Moody Elementary	20.5	23.8	27.4	-
04343086	Moody Middle School	-	-	30.7	29.7
04343045	Mountain Meadows Elementary	20.0	22.7	24.8	-
04343044	Mountain View Elementary	21.0	21.5	25.0	-
04343046	Mundy Road Elementary	21.5	23.0	28.6	-
04343047	Nestor Elementary	19.6	21.4	27.8	-
04343048	Panorama Heights Elementary	21.1	22.7	27.4	-
04343049	Parkland Elementary	21.0	22.3	29.5	-
04343130	Pinetree Secondary	-	-	-	26.6
04343050	Pinetree Way Elementary	20.4	21.9	29.7	-
04343082	Pitt River Middle School	-	-	26.7	24.3
04343051	Pleasant Side Elementary	22.0	22.8	26.8	-

043 Coquitlam - Average Class Size by School

Source: Class size data collection (as of October 31) from BC public schools.

Ministry Code	School Name	Kindergarten	Grade 1 - 3	Grade 4 - 7	Grade 8 - 12
04343088	Port Moody Secondary	-	-	-	25.2
04343023	R C Macdonald Elementary	20.5	22.5	25.0	-
04343054	Ranch Park Elementary	20.3	23.4	30.0	-
04343132	Riverside Secondary	-	-	-	26.3
04343057	Riverview Park Elementary	19.0	22.7	29.7	-
04343055	Rochester Elementary	20.6	22.6	27.5	-
04343056	Roy Stibbs Elementary	20.3	21.8	26.7	-
04343113	Scott Creek Middle School	-	-	30.8	31.0
04343058	Seaview Community School	17.7	22.9	25.4	-
04343114	Summit Middle School	-	-	30.6	29.6
04343136	Terry Fox Secondary	-	-	-	25.2
04343069	Walton Elementary	19.8	22.8	23.3	-
04343070	Westwood Elementary	18.0	21.8	27.1	-

Glossary

Term	Definition / Notes
English Language Learners (ELL)	• A program offered to students whose primary language(s) is/are other than English, and who may require additional services.
Grade	• The assigned grade of a student on October 31.
K	• Kindergarten
Number of Students	• Student population is calculated by headcount.
Student	• A person enrolled in a BC school. Student populations are calculated by headcount. Students include all adult and school-aged persons who are working toward a certificate of graduation.
Student Entitled to an Individual Education Plan	• A student for whom an Individual Education Plan (IEP) must be designed under the Individual Education Plan order, Ministerial Order 638/95.