

# **Overview of Class Size and Composition in British Columbia Public Schools 2015/16**

## **School District 042 Maple Ridge-Pitt Meadows**

These class size data are current as of October 31, 2015 and have been verified by school districts.

---

**PLEASE NOTE**

The Ministry makes small and continuous improvements to the quality of its data. Sometimes these changes result in differences from previously published reports. The data in this report are the most accurate data available at time of publication.

Ministry reports are available at <http://www.bced.gov.bc.ca/reporting/>

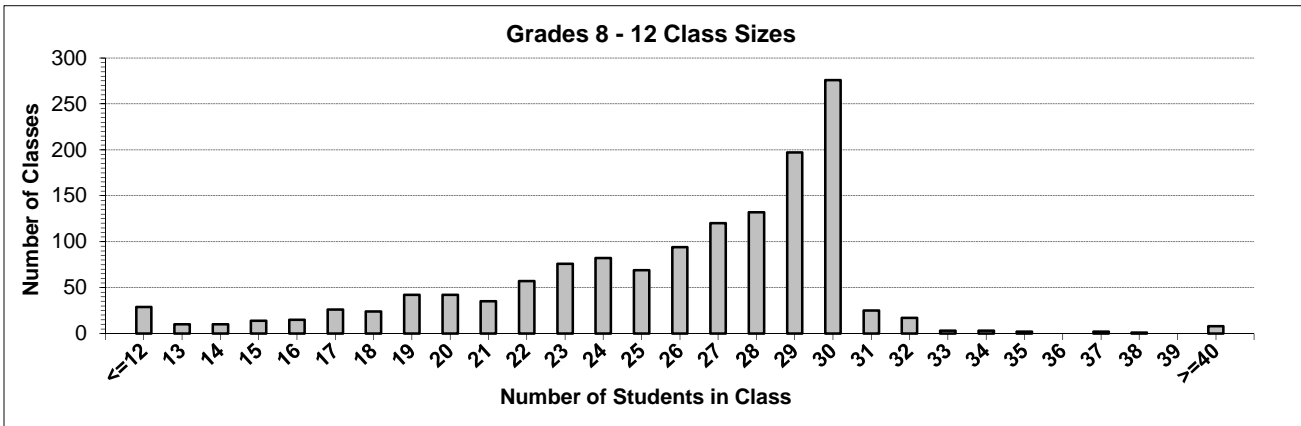
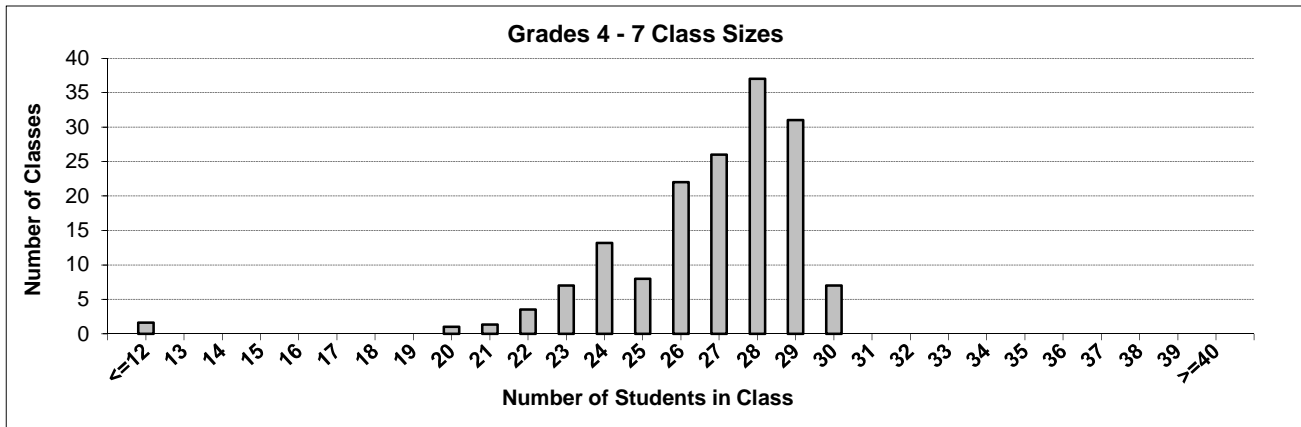
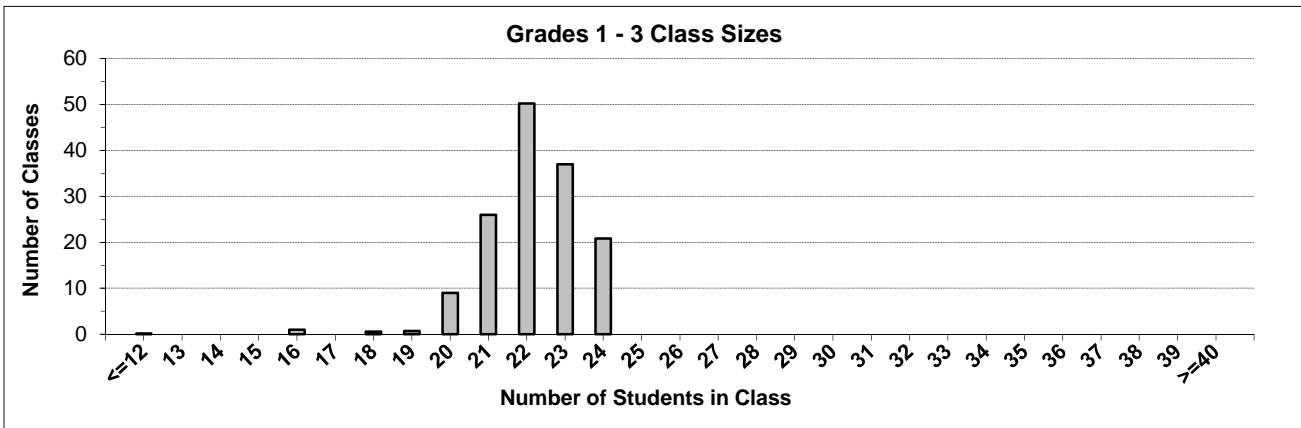
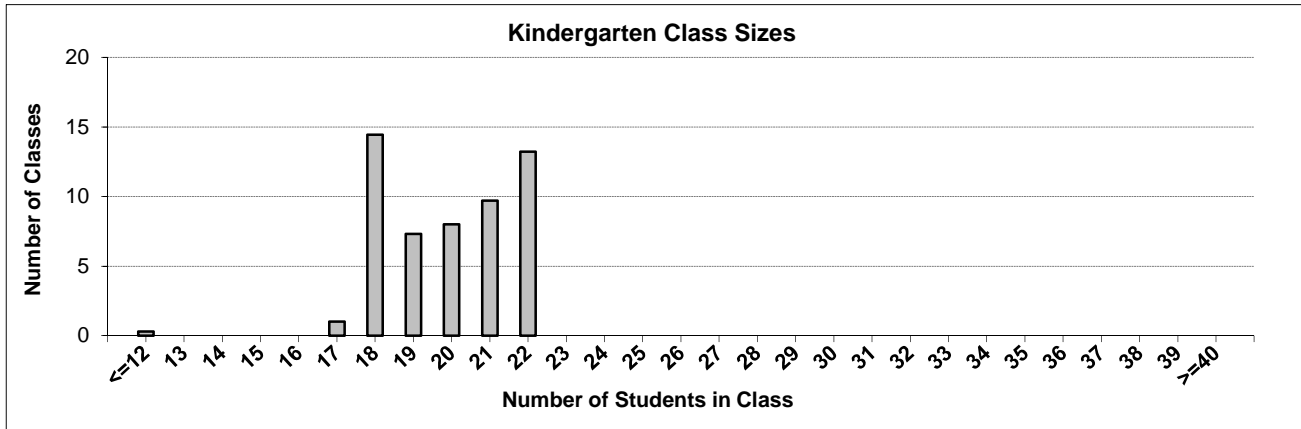
Contact the Analysis and Reporting Unit at [educ.reportingunit@gov.bc.ca](mailto:educ.reportingunit@gov.bc.ca)

---

# District Class Sizes

## 042 Maple Ridge-Pitt Meadows

Source: Class size data collection (as of October 31) from BC public schools.



---

## District - Average Class Size

---

### 042 Maple Ridge-Pitt Meadows

Source: Class size data collection (as of October 31) from BC public schools.

District - Average Class Size	Kindergarten	Grade 1 - 3	Grade 4 - 7	Grade 8 - 12
	19.9	22.2	26.7	25.8

Province - Average Class Size	Kindergarten	Grade 1 - 3	Grade 4 - 7	Grade 8 - 12
	19.7	21.8	26.0	23.4

Number of Reported Classes with Assigned Education Assistants	676
---	-----

Number of Reported Schools in District	27
--	----

Number of Reported Classes in District	1,769
--	-------

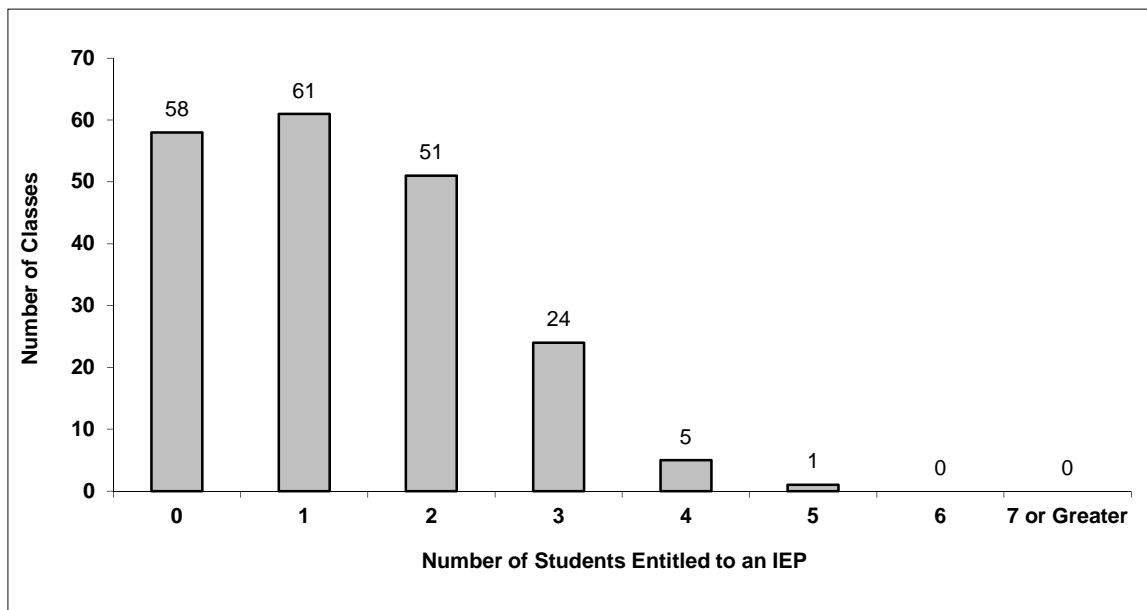
Number of Reported Classes in District with more than 30 Students	61
---	----

## District - Students Entitled to an Individual Education Plan (IEP)

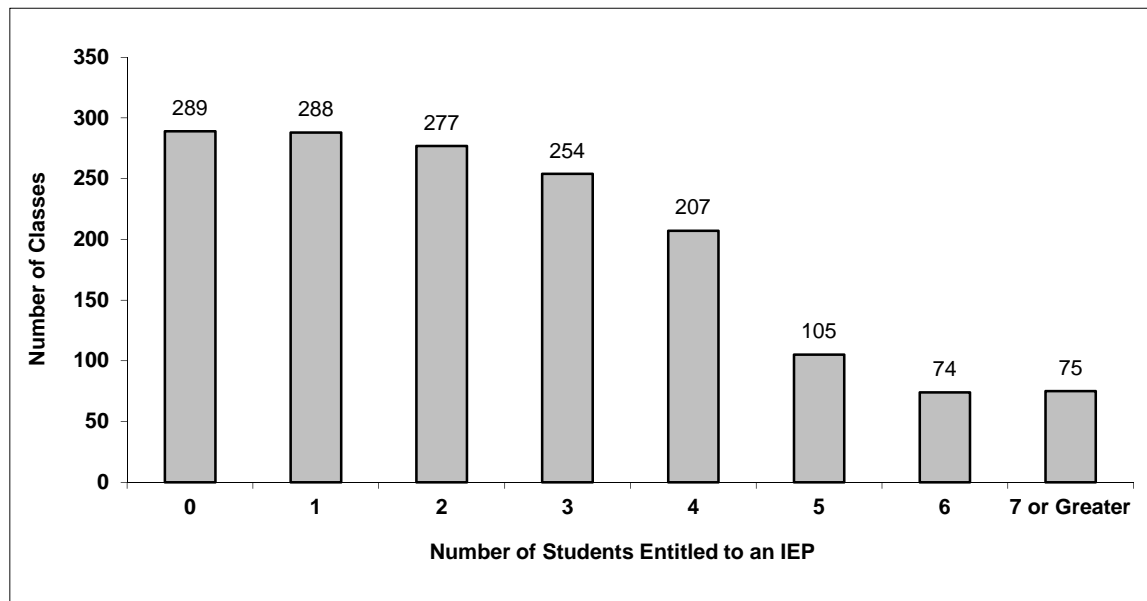
### 042 Maple Ridge-Pitt Meadows

Source: Class size data collection (as of October 31) from BC public schools.

Grades K-3 - Number of Classes in District with 'X' Number of Students Entitled to an IEP



Grades 4-12 - Number of Classes in District with 'X' Number of Students Entitled to an IEP

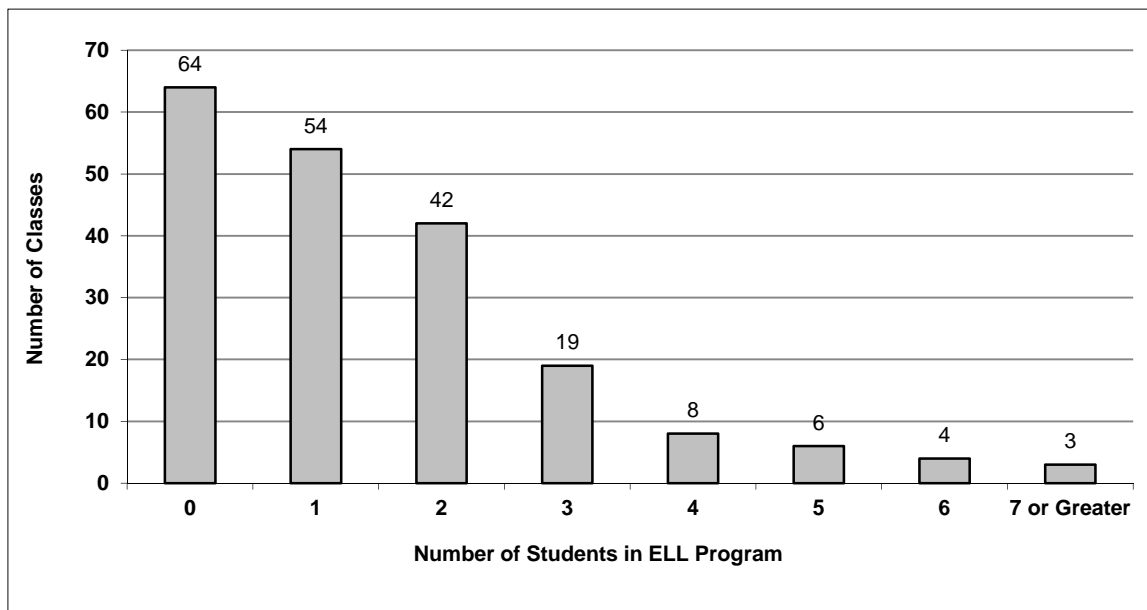


## District - English Language Learners (ELL)

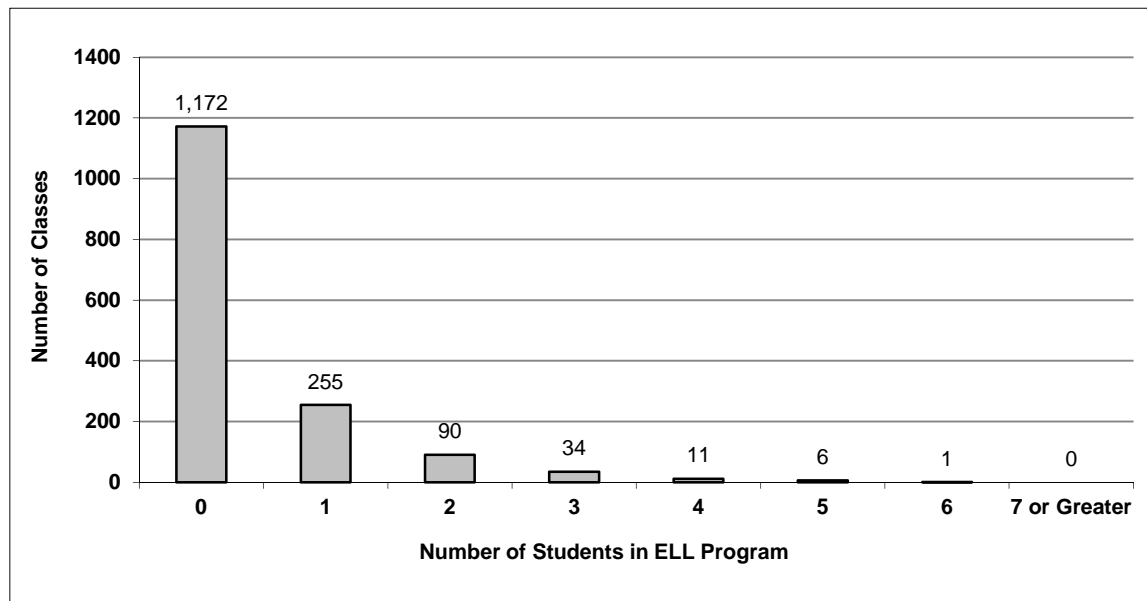
### 042 Maple Ridge-Pitt Meadows

Source: Class size data collection (as of October 31) from BC public schools.

Grades K-3 - Number of Classes in District with 'X' Number of ELL



Grades 4-12 - Number of Classes in District with 'X' Number of ELL



## 042 Maple Ridge-Pitt Meadows - Average Class Size by School

Source: Class size data collection (as of October 31) from BC public schools.

Ministry Code	School Name	Kindergarten	Grade 1 - 3	Grade 4 - 7	Grade 8 - 12
04242005	Albion Elementary	18.7	22.0	28.1	-
04242042	Alexander Robinson Elementary	21.7	22.7	28.1	-
04242035	Alouette Elementary	19.6	21.9	24.8	-
04242041	Blue Mountain Elementary	18.0	21.3	25.2	-
04242031	Davie Jones Elementary	20.0	22.2	25.0	-
04242039	Edith McDermott Elementary	22.0	22.4	27.5	-
04242046	Environmental School Project	22.0	22.0	22.0	-
04242008	Eric Langton Elementary	21.4	22.9	26.9	-
04242009	Fairview Elementary	18.8	22.1	24.8	-
04242002	Garibaldi Secondary	-	-	-	24.1
04242010	Glenwood Elementary	18.2	20.5	26.8	-
04242011	Golden Ears Elementary	21.0	22.9	28.1	-
04242043	Hammond Elementary	21.0	22.0	25.7	-
04242036	Harry Hooge Elementary	18.0	21.7	25.6	-
04242033	Highland Park Elementary	19.5	22.0	26.3	-
04242037	Kanaka Creek Elementary	18.3	22.5	28.5	-
04242032	Laity View Elementary	21.0	22.3	27.3	-
04242014	Maple Ridge Elementary	21.3	21.9	27.3	-
04242001	Maple Ridge Secondary	-	-	23.0	25.8
04242017	Pitt Meadows Elementary	21.0	22.0	26.1	-
04242003	Pitt Meadows Secondary	-	-	-	25.9
04242045	Samuel Robertson Technical Secondary	-	-	-	25.7
04242038	Thomas Haney Centre	-	-	-	26.6
04242020	Webster's Corners Elementary	18.6	20.4	24.3	-
04242004	Westview Secondary	-	-	-	27.0
04242040	Whonnock Elementary	20.4	23.0	27.4	-
04242052	Yennadon Elementary	17.7	22.7	27.0	-

---

## Glossary

---

Term	Definition / Notes
<b>English Language Learners (ELL)</b>	• A program offered to students whose primary language(s) is/are other than English, and who may require additional services.
<b>Grade</b>	• The assigned grade of a student on October 31.
<b>K</b>	• Kindergarten
<b>Number of Students</b>	• Student population is calculated by headcount.
<b>Student</b>	• A person enrolled in a BC school. Student populations are calculated by headcount. Students include all adult and school-aged persons who are working toward a certificate of graduation.
<b>Student Entitled to an Individual Education Plan</b>	• A student for whom an Individual Education Plan (IEP) must be designed under the Individual Education Plan order, Ministerial Order 638/95.