

Overview of Class Size and Composition in British Columbia Public Schools 2015/16

School District 040 New Westminster

These class size data are current as of October 31, 2015 and have been verified by school districts.



Ministry of
Education

December 2015
Analysis and Reporting Unit

PLEASE NOTE

The Ministry makes small and continuous improvements to the quality of its data. Sometimes these changes result in differences from previously published reports. The data in this report are the most accurate data available at time of publication.

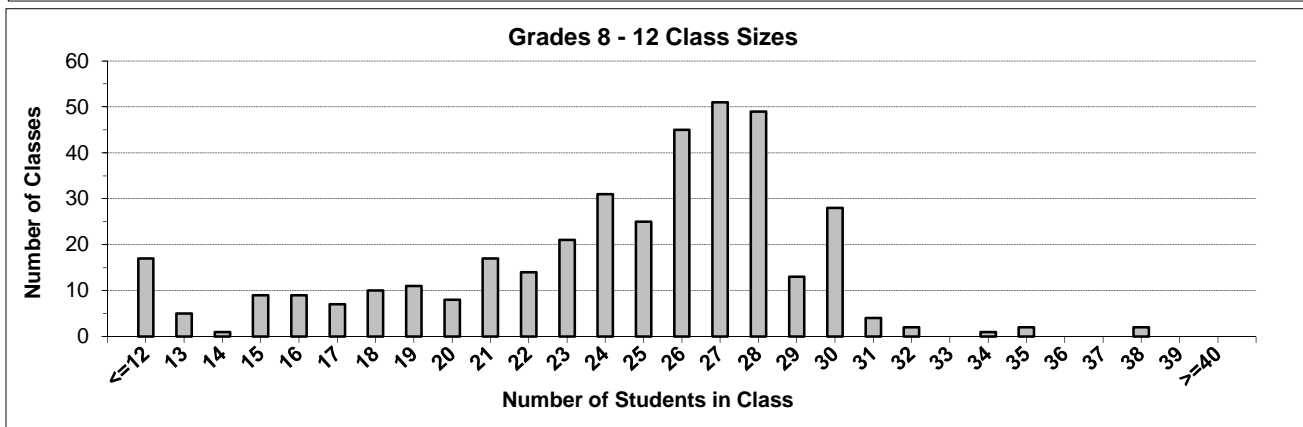
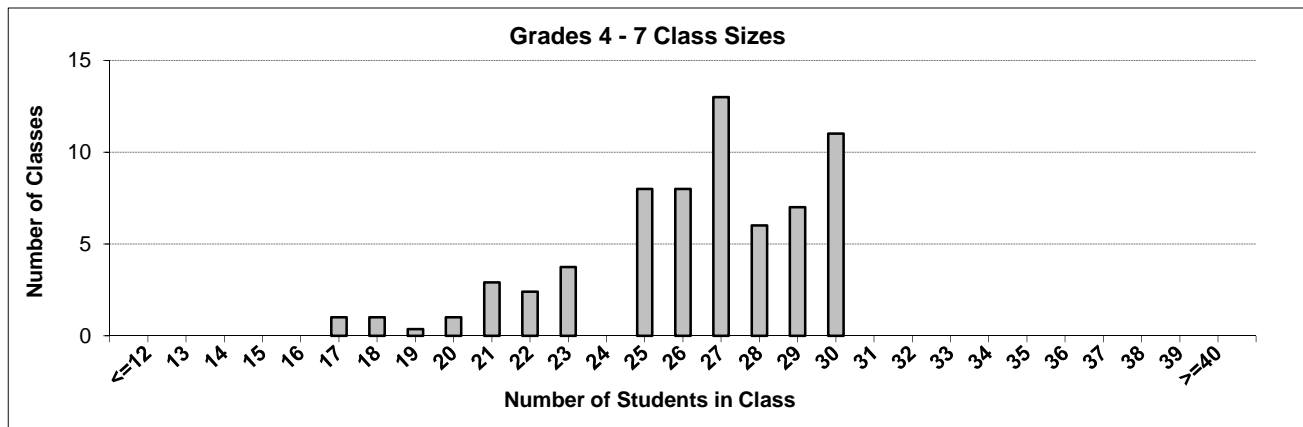
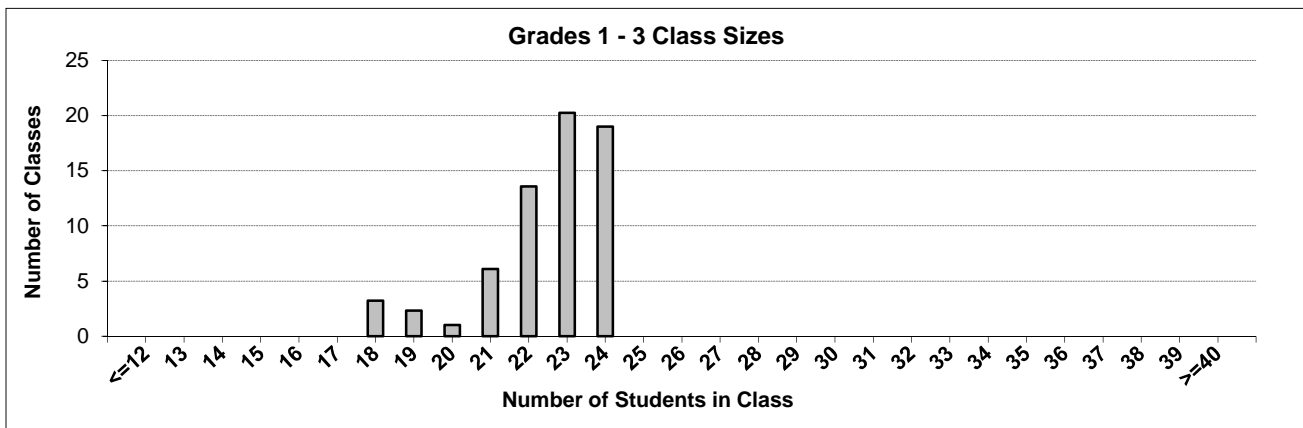
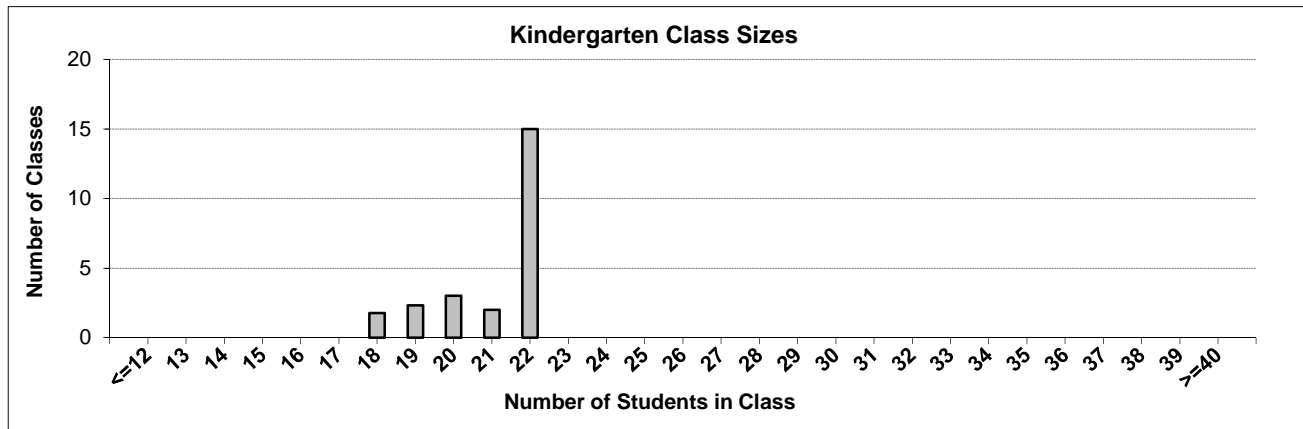
Ministry reports are available at <http://www.bced.gov.bc.ca/reporting/>

Contact the Analysis and Reporting Unit at educ.reportingunit@gov.bc.ca

District Class Sizes

040 New Westminster

Source: Class size data collection (as of October 31) from BC public schools.



District - Average Class Size

040 New Westminster

Source: Class size data collection (as of October 31) from BC public schools.

District - Average Class Size	Kindergarten	Grade 1 - 3	Grade 4 - 7	Grade 8 - 12
	21.1	22.5	26.3	24.1

Province - Average Class Size	Kindergarten	Grade 1 - 3	Grade 4 - 7	Grade 8 - 12
	19.7	21.8	26.0	23.4

Number of Reported Classes with Assigned Education Assistants	207
---	-----

Number of Reported Schools in District	11
--	----

Number of Reported Classes in District	537
--	-----

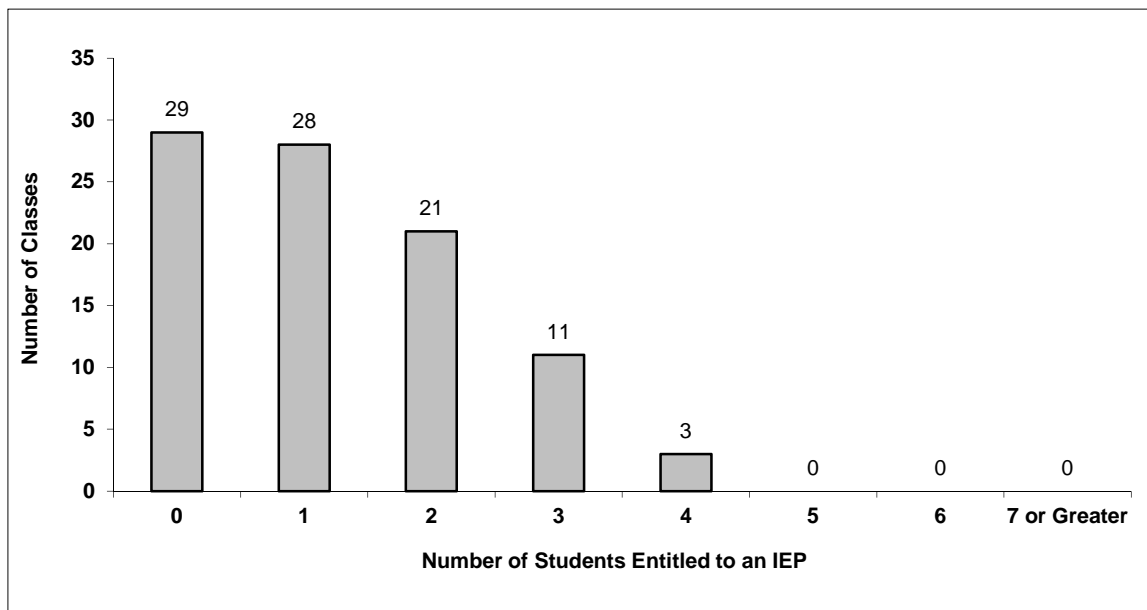
Number of Reported Classes in District with more than 30 Students	11
---	----

District - Students Entitled to an Individual Education Plan (IEP)

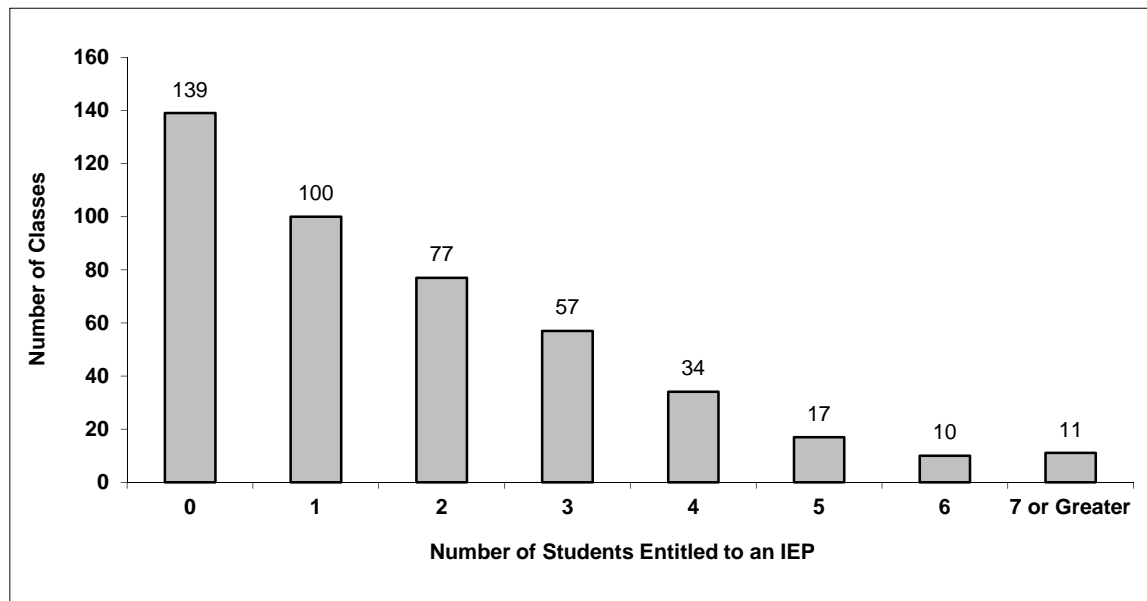
040 New Westminster

Source: Class size data collection (as of October 31) from BC public schools.

Grades K-3 - Number of Classes in District with 'X' Number of Students Entitled to an IEP



Grades 4-12 - Number of Classes in District with 'X' Number of Students Entitled to an IEP

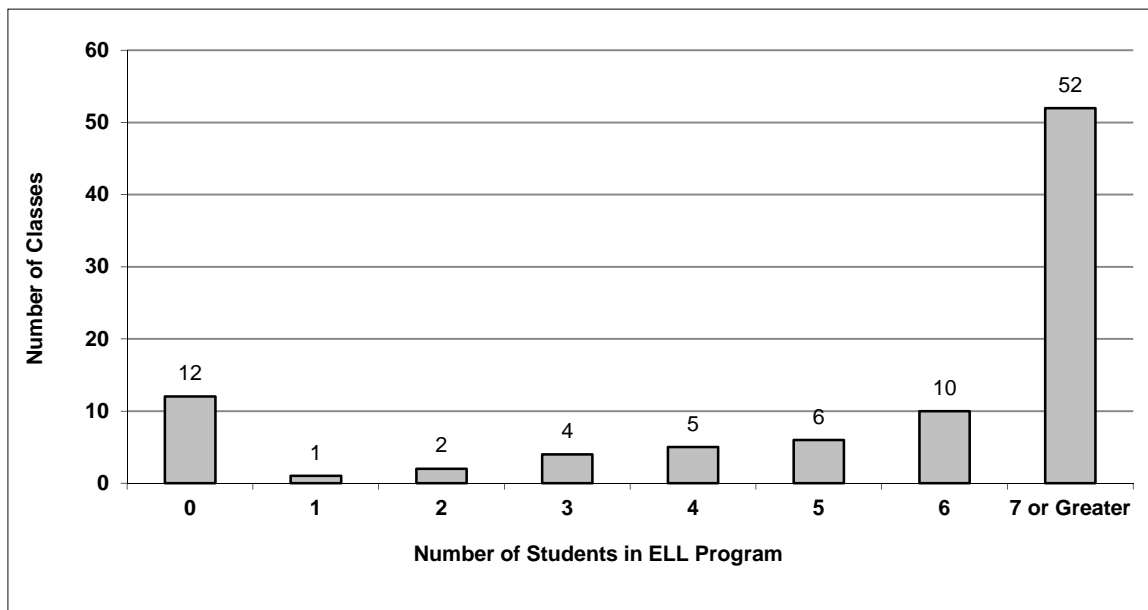


District - English Language Learners (ELL)

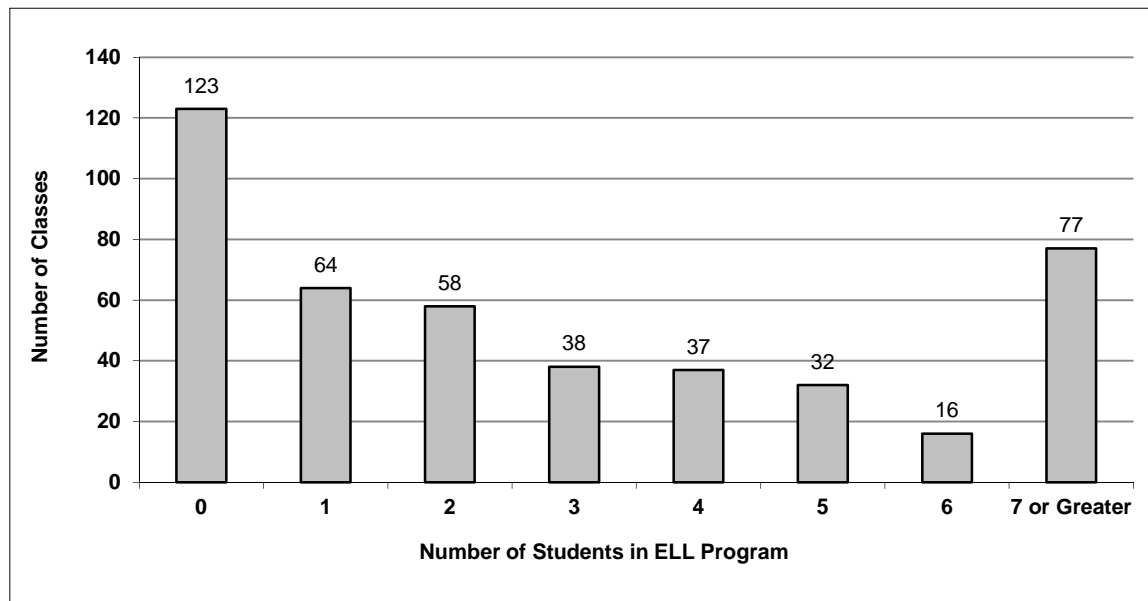
040 New Westminster

Source: Class size data collection (as of October 31) from BC public schools.

Grades K-3 - Number of Classes in District with 'X' Number of ELL



Grades 4-12 - Number of Classes in District with 'X' Number of ELL



040 New Westminster - Average Class Size by School

Source: Class size data collection (as of October 31) from BC public schools.

Ministry Code	School Name	Kindergarten	Grade 1 - 3	Grade 4 - 7	Grade 8 - 12
04040010	Connaught Heights Elementary	21.4	22.9	21.7	-
04040013	Ecole Glenbrook Middle School	-	-	28.5	23.6
04040015	Ecole Qayqayt Elementary	22.0	22.3	25.7	-
04040009	F W Howay Elementary	19.0	21.2	20.0	-
04040002	Herbert Spencer Elementary	22.0	22.7	25.7	-
04040001	Lord Kelvin Elementary	21.7	23.0	29.4	-
04040004	Lord Tweedsmuir Elementary	19.5	21.7	25.9	-
04040008	New Westminster Secondary	-	-	-	24.1
04040012	Queen Elizabeth Elementary	20.3	22.8	26.2	-
04040014	Queensborough Middle School	-	-	25.5	27.5
04040003	Richard McBride Elementary	22.0	22.6	24.4	-

Glossary

Term	Definition / Notes
English Language Learners (ELL)	<ul style="list-style-type: none"> • A program offered to students whose primary language(s) is/are other than English, and who may require additional services.
Grade	<ul style="list-style-type: none"> • The assigned grade of a student on October 31.
K	<ul style="list-style-type: none"> • Kindergarten
Number of Students	<ul style="list-style-type: none"> • Student population is calculated by headcount.
Student	<ul style="list-style-type: none"> • A person enrolled in a BC school. Student populations are calculated by headcount. Students include all adult and school-aged persons who are working toward a certificate of graduation.
Student Entitled to an Individual Education Plan	<ul style="list-style-type: none"> • A student for whom an Individual Education Plan (IEP) must be designed under the Individual Education Plan order, Ministerial Order 638/95.