

# Overview of Class Size and Composition in British Columbia Public Schools 2015/16

## School District 037 Delta

These class size data are current as of October 31, 2015 and have been verified by school districts.



Ministry of  
Education

December 2015  
Analysis and Reporting Unit

---

#### **PLEASE NOTE**

The Ministry makes small and continuous improvements to the quality of its data. Sometimes these changes result in differences from previously published reports. The data in this report are the most accurate data available at time of publication.

Ministry reports are available at <http://www.bced.gov.bc.ca/reporting/>

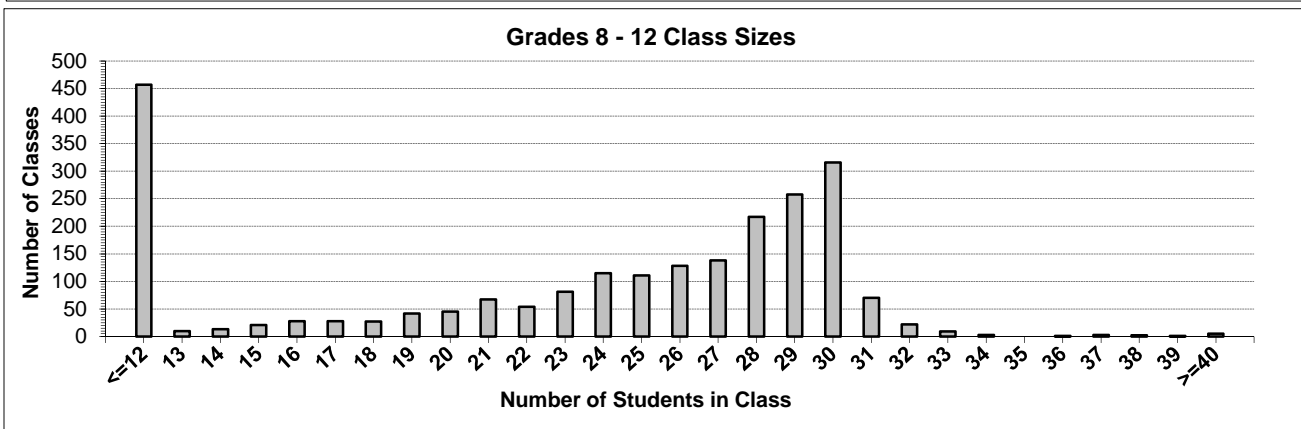
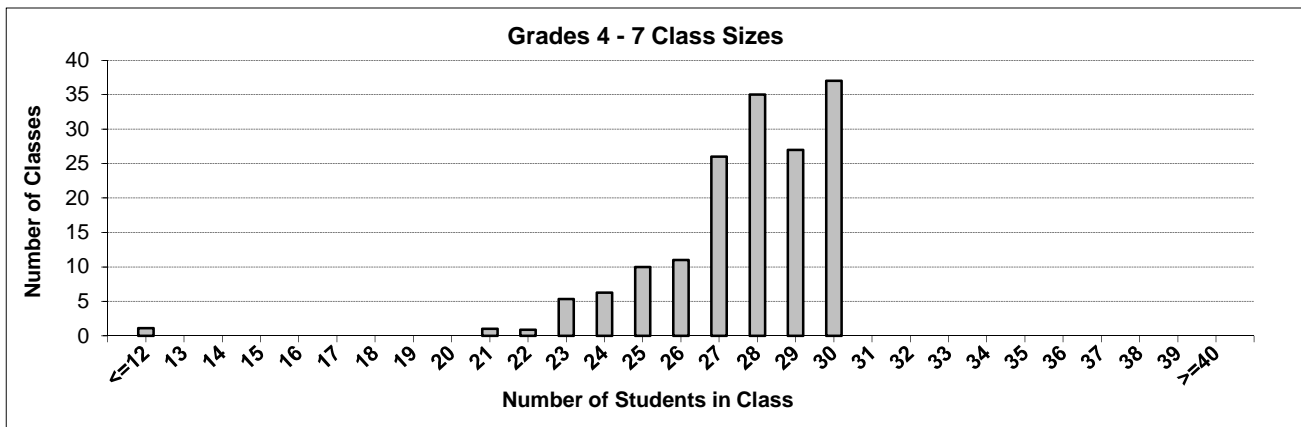
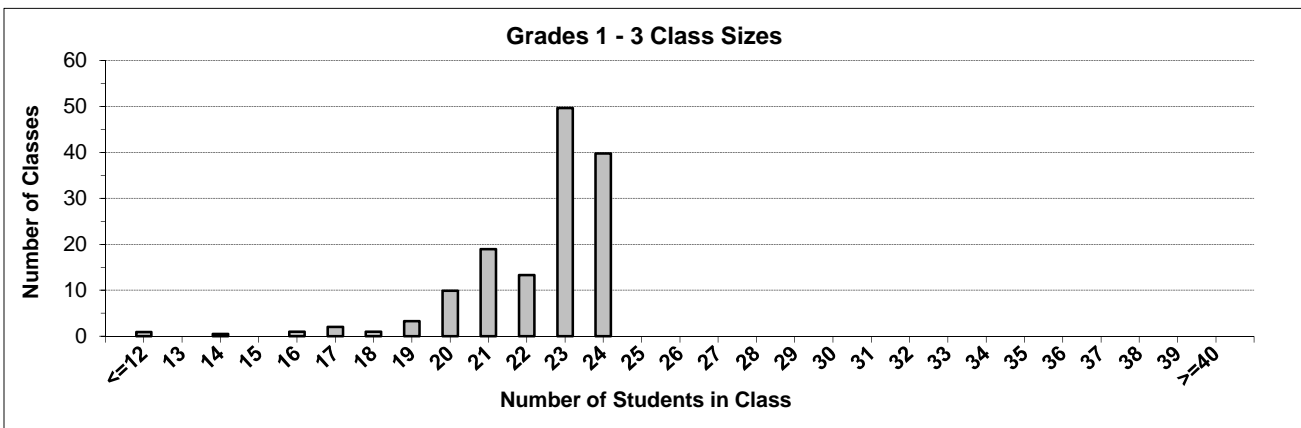
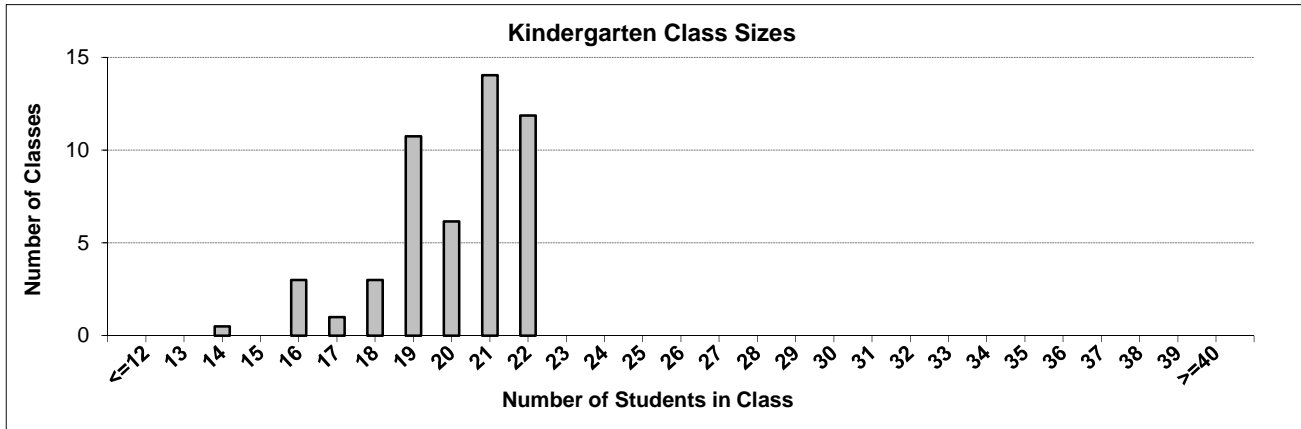
Contact the Analysis and Reporting Unit at [educ.reportingunit@gov.bc.ca](mailto:educ.reportingunit@gov.bc.ca)

---

# District Class Sizes

## 037 Delta

Source: Class size data collection (as of October 31) from BC public schools.



---

## District - Average Class Size

---

### 037 Delta

Source: Class size data collection (as of October 31) from BC public schools.

District - Average Class Size	Kindergarten	Grade 1 - 3	Grade 4 - 7	Grade 8 - 12
	20.1	22.3	27.6	22.1

Province - Average Class Size	Kindergarten	Grade 1 - 3	Grade 4 - 7	Grade 8 - 12
	19.7	21.8	26.0	23.4

Number of Reported Classes with Assigned Education Assistants	778
---	-----

Number of Reported Schools in District	31
--	----

Number of Reported Classes in District	2,623
--	-------

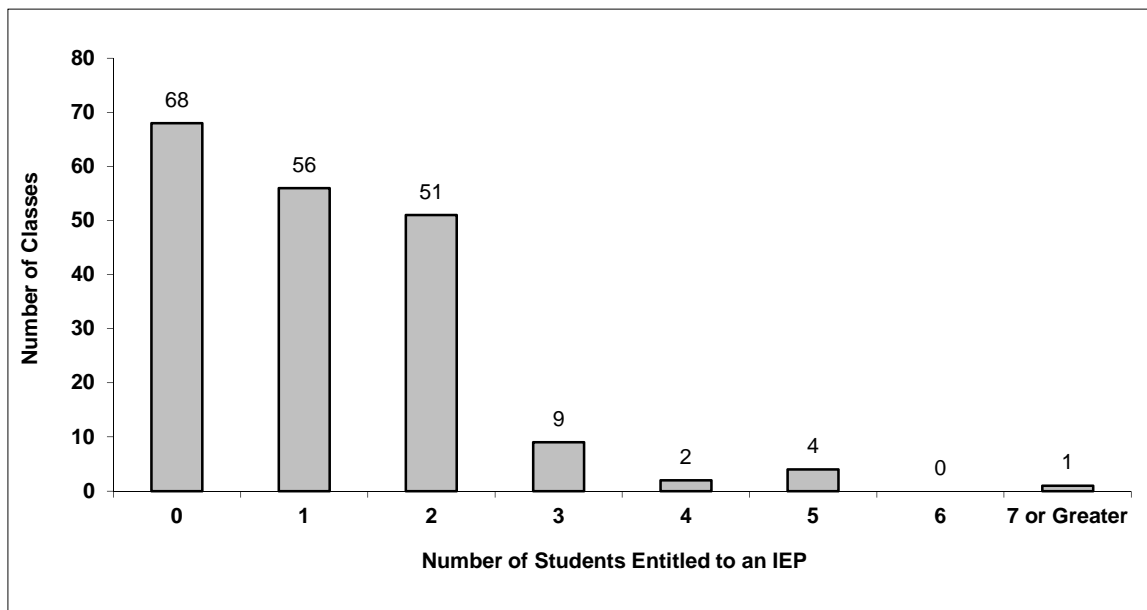
Number of Reported Classes in District with more than 30 Students	116
---	-----

## District - Students Entitled to an Individual Education Plan (IEP)

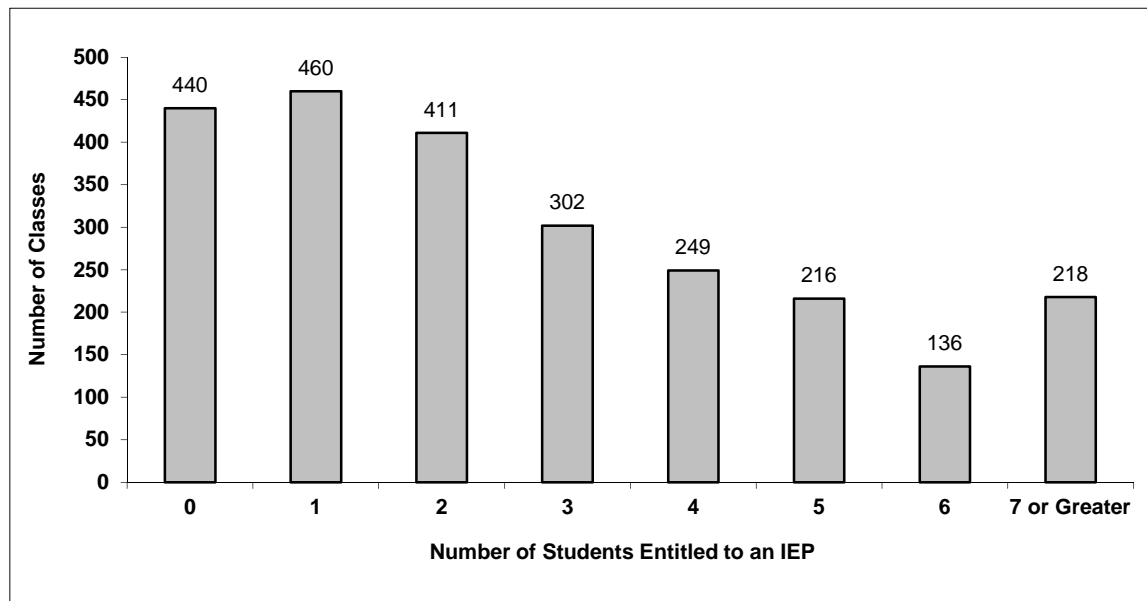
### 037 Delta

Source: Class size data collection (as of October 31) from BC public schools.

Grades K-3 - Number of Classes in District with 'X' Number of Students Entitled to an IEP



Grades 4-12 - Number of Classes in District with 'X' Number of Students Entitled to an IEP

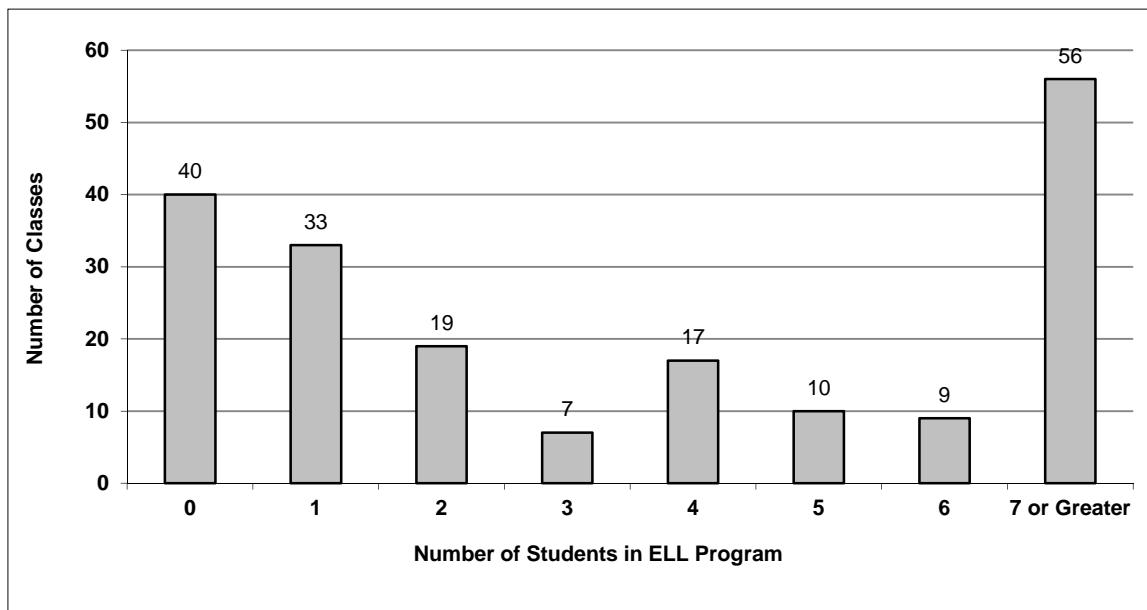


## District - English Language Learners (ELL)

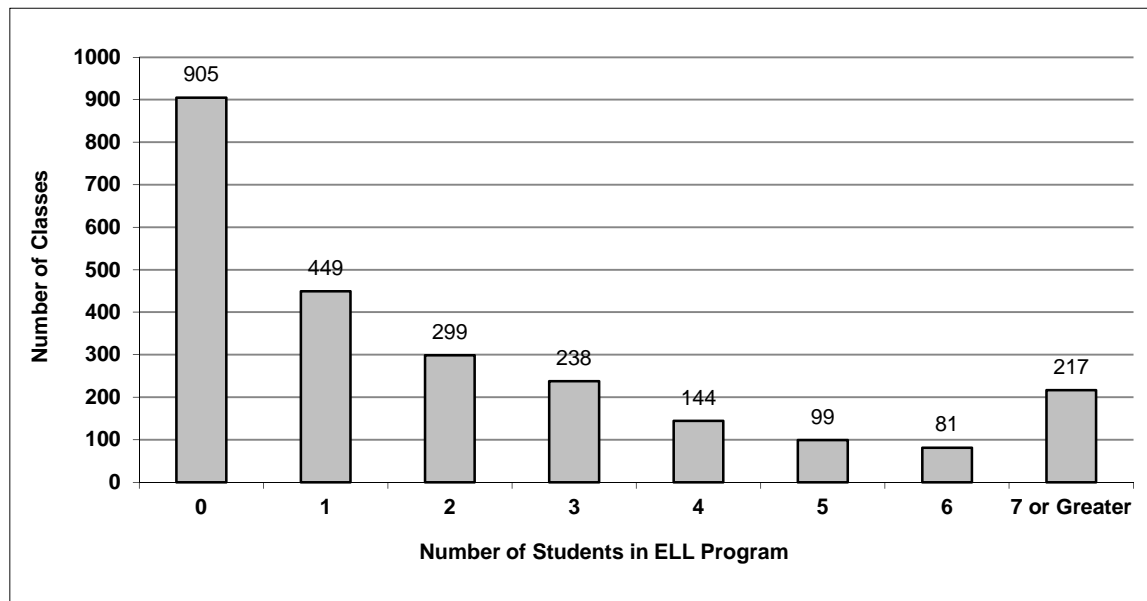
### 037 Delta

Source: Class size data collection (as of October 31) from BC public schools.

Grades K-3 - Number of Classes in District with 'X' Number of ELL



Grades 4-12 - Number of Classes in District with 'X' Number of ELL



## 037 Delta - Average Class Size by School

Source: Class size data collection (as of October 31) from BC public schools.

Ministry Code	School Name	Kindergarten	Grade 1 - 3	Grade 4 - 7	Grade 8 - 12
03737009	Annieville Elementary	18.5	22.1	27.5	-
03737019	Beach Grove Elementary	21.0	23.4	29.3	-
03737029	Brooke Elementary	22.0	23.1	24.2	-
03737034	Burnsview Secondary	-	-	-	21.9
03737022	Chalmers Elementary	20.5	22.0	27.3	-
03737015	Cliff Drive Elementary	20.2	21.2	26.2	-
03737039	Cougar Canyon Elementary	21.8	23.5	29.0	-
03737003	Delta Secondary	-	-	-	21.6
03737021	Delview Secondary	-	-	-	19.4
03737017	Devon Gardens Elementary	16.7	21.4	26.8	-
03737014	English Bluff Elementary	17.0	23.5	27.3	-
03737026	Gibson Elementary	20.6	22.6	29.8	-
03737024	Gray Elementary	19.3	23.6	28.9	-
03737025	Hawthorne Elementary	20.0	23.4	28.3	-
03737008	Heath Traditional Elementary	21.5	23.0	28.1	-
03737023	Hellings Elementary	20.6	22.6	28.0	-
03737035	Holly Elementary	22.0	22.2	27.4	-
03737030	Jarvis Traditional Elementary	20.7	23.0	28.6	-
03737001	Ladner Elementary	20.3	21.9	26.4	-
03737032	McCloskey Elementary	21.0	21.7	25.9	-
03737043	Neilson Grove Elementary	19.0	20.0	28.5	-
03737012	North Delta Secondary	-	-	-	19.8
03737027	Pebble Hill Traditional Elementary	18.5	22.4	26.7	-
03737041	Pinewood Elementary	22.0	22.8	27.8	-
03737033	Port Guichon Elementary	20.0	23.5	27.3	-
03737007	Richardson Elementary	20.1	20.2	28.2	-
03737038	Sands Secondary	-	-	-	22.3
03737040	Seaquam Secondary	-	-	-	23.9
03737037	South Delta Secondary	-	-	30.0	22.9
03737018	South Park Elementary	16.8	20.5	28.3	-
03737013	Sunshine Hills Elementary	20.7	22.8	26.9	-

---

## Glossary

---

Term	Definition / Notes
<b>English Language Learners (ELL)</b>	• A program offered to students whose primary language(s) is/are other than English, and who may require additional services.
<b>Grade</b>	• The assigned grade of a student on October 31.
<b>K</b>	• Kindergarten
<b>Number of Students</b>	• Student population is calculated by headcount.
<b>Student</b>	• A person enrolled in a BC school. Student populations are calculated by headcount. Students include all adult and school-aged persons who are working toward a certificate of graduation.
<b>Student Entitled to an Individual Education Plan</b>	• A student for whom an Individual Education Plan (IEP) must be designed under the Individual Education Plan order, Ministerial Order 638/95.