

Overview of Class Size and Composition in British Columbia Public Schools 2015/16

School District 027 Cariboo-Chilcotin

These class size data are current as of October 31, 2015 and have been verified by school districts.



Ministry of
Education

December 2015
Analysis and Reporting Unit

PLEASE NOTE

The Ministry makes small and continuous improvements to the quality of its data. Sometimes these changes result in differences from previously published reports. The data in this report are the most accurate data available at time of publication.

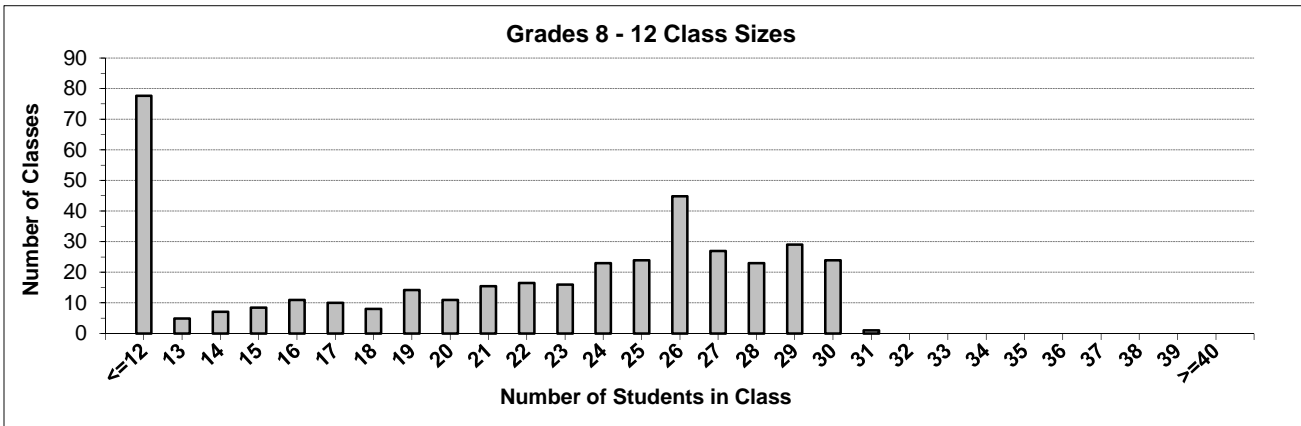
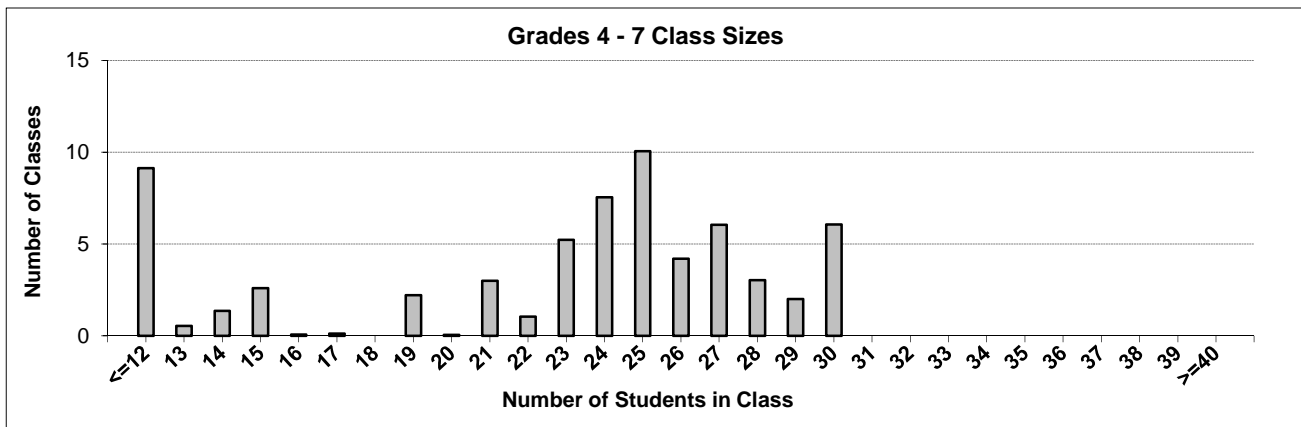
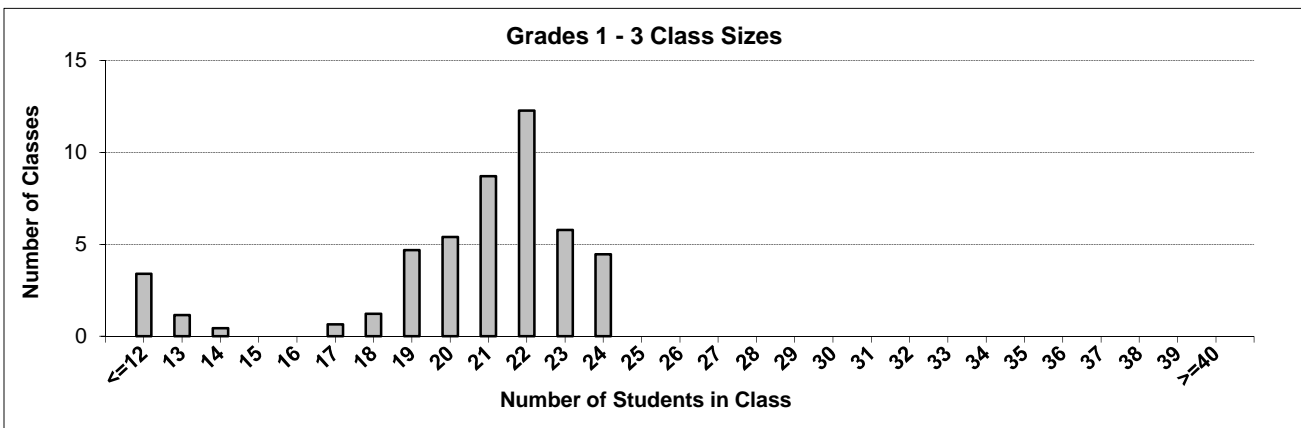
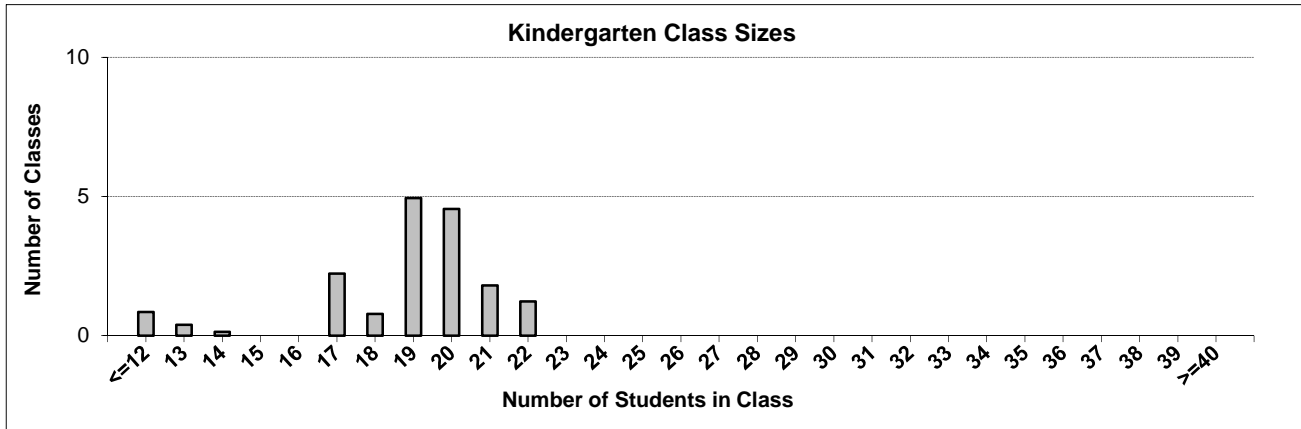
Ministry reports are available at <http://www.bced.gov.bc.ca/reporting/>

Contact the Analysis and Reporting Unit at educ.reportingunit@gov.bc.ca

District Class Sizes

027 Cariboo-Chilcotin

Source: Class size data collection (as of October 31) from BC public schools.



District - Average Class Size

027 Cariboo-Chilcotin

Source: Class size data collection (as of October 31) from BC public schools.

District - Average Class Size	Kindergarten	Grade 1 - 3	Grade 4 - 7	Grade 8 - 12
	18.7	20.2	22.0	20.4

Province - Average Class Size	Kindergarten	Grade 1 - 3	Grade 4 - 7	Grade 8 - 12
	19.7	21.8	26.0	23.4

Number of Reported Classes with Assigned Education Assistants	0
---	---

Number of Reported Schools in District	22
--	----

Number of Reported Classes in District	525
--	-----

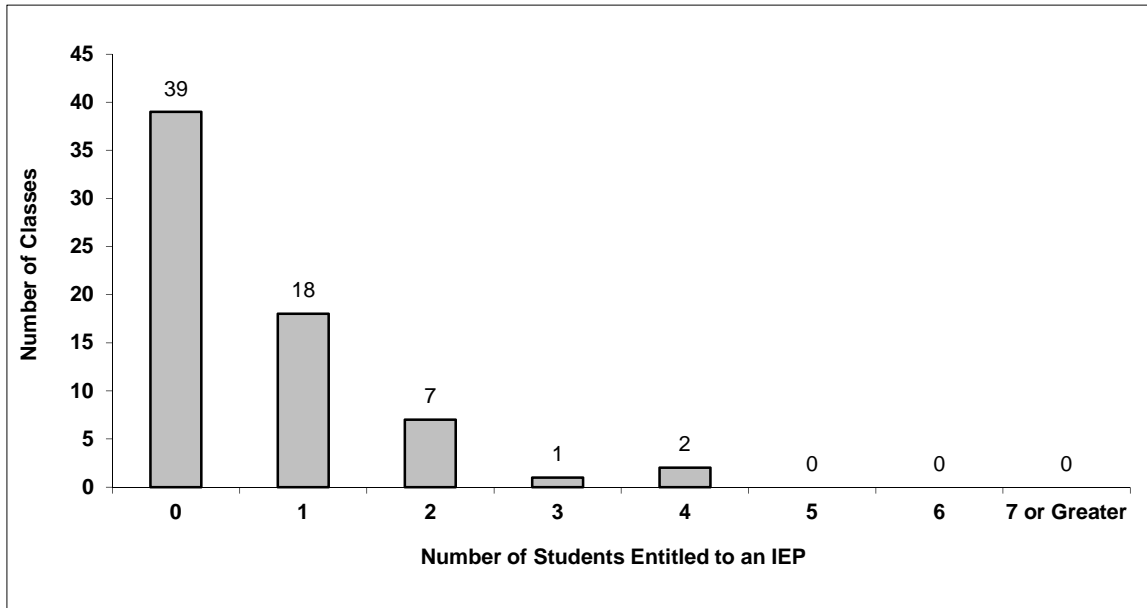
Number of Reported Classes in District with more than 30 Students	1
---	---

District - Students Entitled to an Individual Education Plan (IEP)

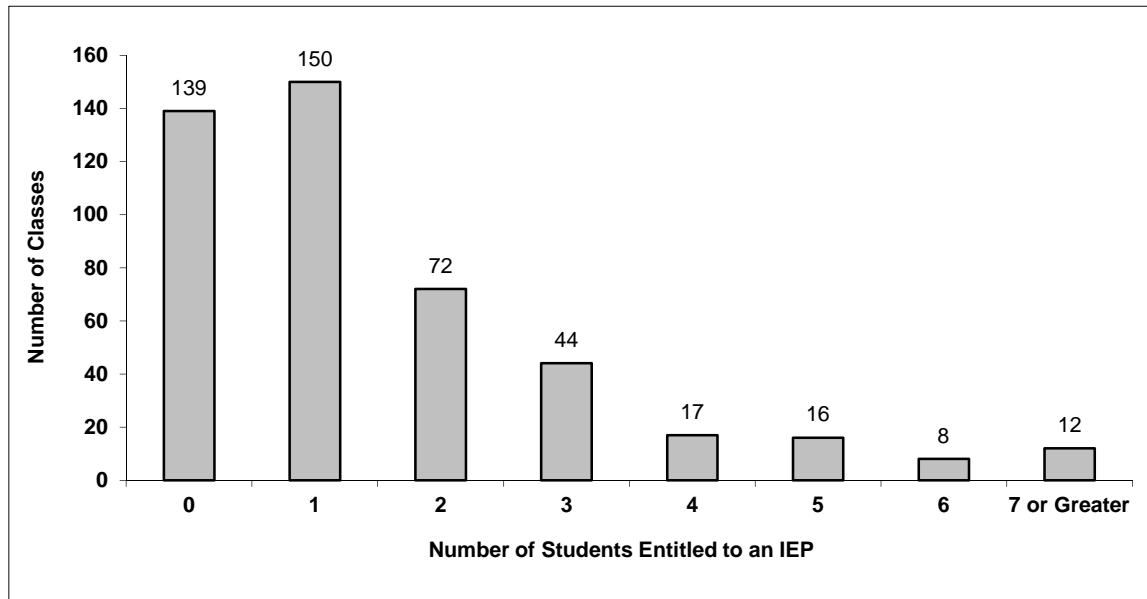
027 Cariboo-Chilcotin

Source: Class size data collection (as of October 31) from BC public schools.

Grades K-3 - Number of Classes in District with 'X' Number of Students Entitled to an IEP



Grades 4-12 - Number of Classes in District with 'X' Number of Students Entitled to an IEP

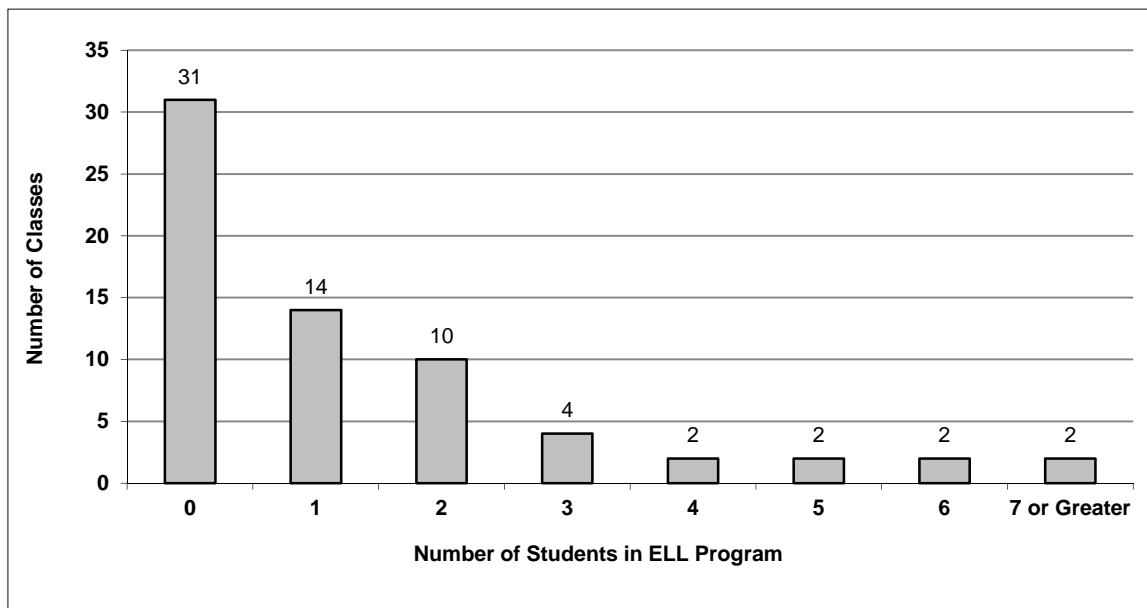


District - English Language Learners (ELL)

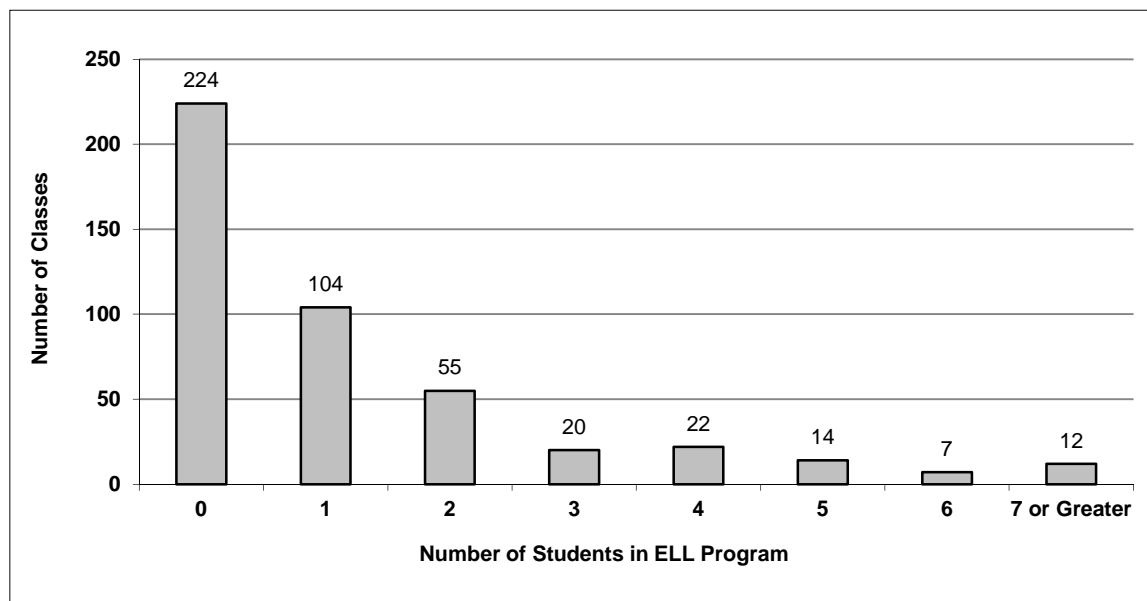
027 Cariboo-Chilcotin

Source: Class size data collection (as of October 31) from BC public schools.

Grades K-3 - Number of Classes in District with 'X' Number of ELL



Grades 4-12 - Number of Classes in District with 'X' Number of ELL



027 Cariboo-Chilcotin - Average Class Size by School

Source: Class size data collection (as of October 31) from BC public schools.

Ministry Code	School Name	Kindergarten	Grade 1 - 3	Grade 4 - 7	Grade 8 - 12
02727012	100 Mile House Elementary	18.7	21.6	24.8	-
02727027	150 Mile Elementary	21.3	20.6	24.3	-
02727071	Alexis Creek Elementary/Secondary	13.0	13.0	14.7	26.0
02727054	Anahim Lake Elem-Jr Secondary	13.0	13.0	7.2	13.0
02727020	Big Lake Elementary	10.0	10.0	11.0	-
02727006	Bridge Lake Elementary	-	6.0	6.0	-
02727057	Cataline Elementary	19.8	22.4	29.8	-
02727041	Chilcotin Road Elementary	19.2	21.1	24.8	-
02727070	Dog Creek Elem-Jr. Secondary	-	8.0	9.6	10.0
02727007	Forest Grove Elementary	22.0	22.0	26.0	-
02727061	Horse Lake Elementary	19.0	20.6	27.6	-
02727008	Horsefly Elem-Jr Secondary	19.0	20.5	22.1	21.0
02727030	Lac La Hache Elementary	9.0	9.0	10.0	-
02727072	Lake City Secondary	-	-	18.1	21.9
02727014	Likely Elem-Jr Secondary	14.0	14.0	14.0	-
02727011	Marie Sharpe Elementary	19.6	21.7	24.0	-
02727062	Mile 108 Elementary	20.8	21.4	23.4	-
02727045	Mountview Elementary	17.3	20.8	23.9	-
02727059	Naghtaneqed Elem-Jr Secondary	19.0	19.0	19.0	19.0
02727065	Nesika Elementary	19.2	21.4	26.7	-
02727056	Peter Skene Ogden Secondary	-	-	20.0	17.7
02727066	Tatla Lake Elem-Jr Secondary	9.0	9.0	11.0	11.0

Glossary

Term	Definition / Notes
English Language Learners (ELL)	<ul style="list-style-type: none">• A program offered to students whose primary language(s) is/are other than English, and who may require additional services.
Grade	<ul style="list-style-type: none">• The assigned grade of a student on October 31.
K	<ul style="list-style-type: none">• Kindergarten
Number of Students	<ul style="list-style-type: none">• Student population is calculated by headcount.
Student	<ul style="list-style-type: none">• A person enrolled in a BC school. Student populations are calculated by headcount. Students include all adult and school-aged persons who are working toward a certificate of graduation.
Student Entitled to an Individual Education Plan	<ul style="list-style-type: none">• A student for whom an Individual Education Plan (IEP) must be designed under the Individual Education Plan order, Ministerial Order 638/95.