

# Overview of Class Size and Composition in British Columbia Public Schools 2015/16

## School District 023 Central Okanagan

These class size data are current as of October 31, 2015 and have been verified by school districts.



Ministry of  
Education

December 2015  
Analysis and Reporting Unit

---

**PLEASE NOTE**

The Ministry makes small and continuous improvements to the quality of its data. Sometimes these changes result in differences from previously published reports. The data in this report are the most accurate data available at time of publication.

Ministry reports are available at <http://www.bced.gov.bc.ca/reporting/>

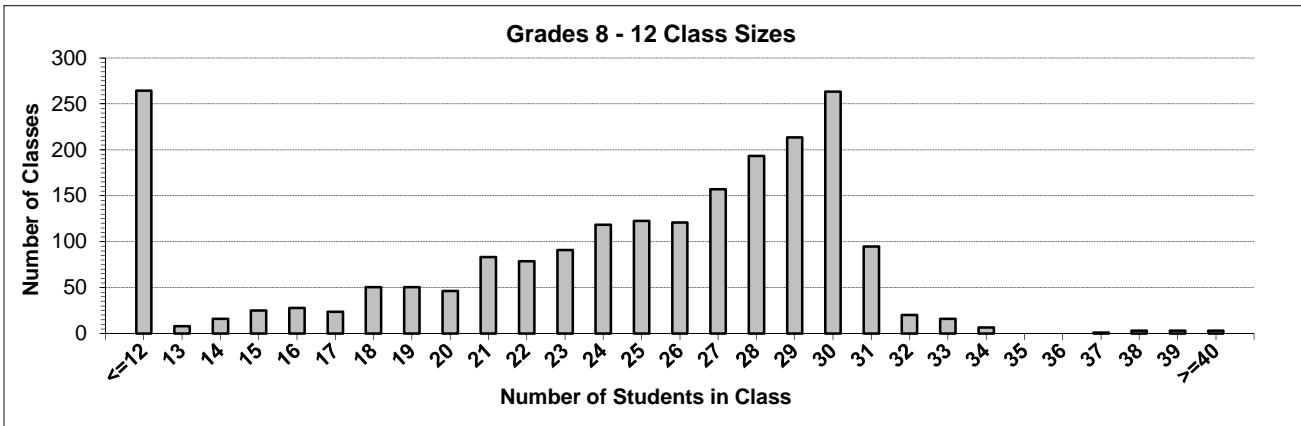
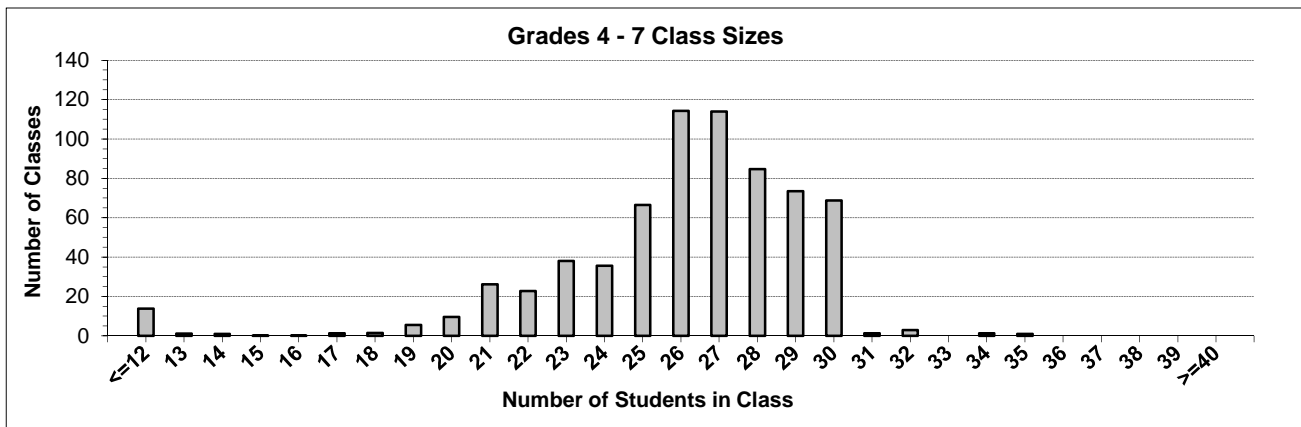
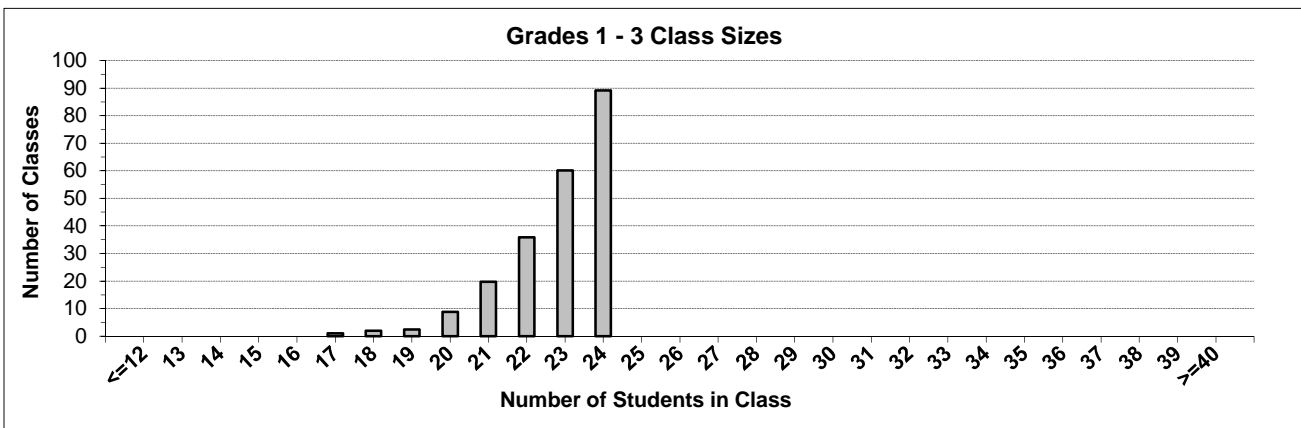
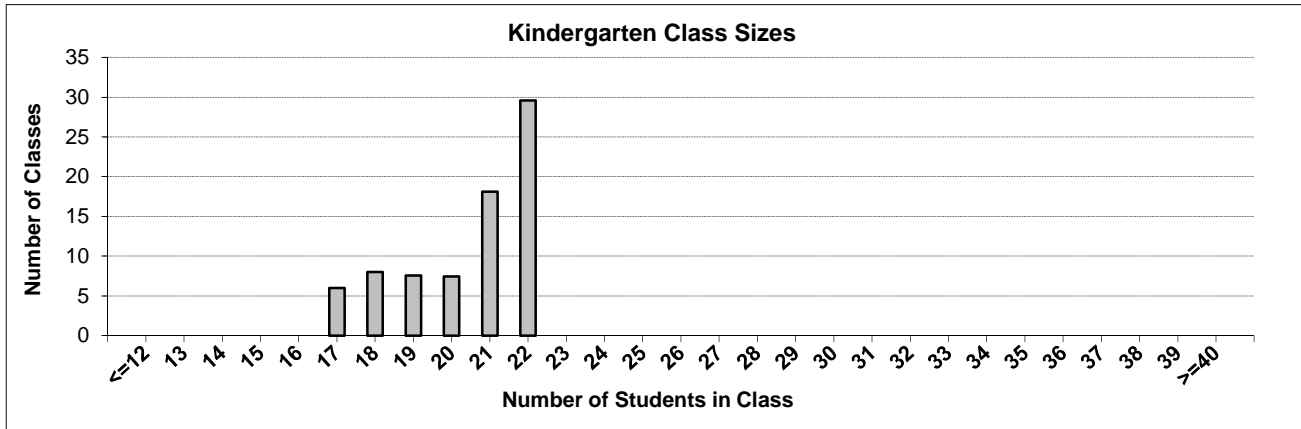
Contact the Analysis and Reporting Unit at [educ.reportingunit@gov.bc.ca](mailto:educ.reportingunit@gov.bc.ca)

---

# District Class Sizes

## 023 Central Okanagan

Source: Class size data collection (as of October 31) from BC public schools.



---

## District - Average Class Size

---

### 023 Central Okanagan

Source: Class size data collection (as of October 31) from BC public schools.

District - Average Class Size	Kindergarten	Grade 1 - 3	Grade 4 - 7	Grade 8 - 12
	20.5	22.8	25.9	23.2

Province - Average Class Size	Kindergarten	Grade 1 - 3	Grade 4 - 7	Grade 8 - 12
	19.7	21.8	26.0	23.4

Number of Reported Classes with Assigned Education Assistants	1,000
---------------------------------------------------------------	-------

Number of Reported Schools in District	42
----------------------------------------	----

Number of Reported Classes in District	3,081
----------------------------------------	-------

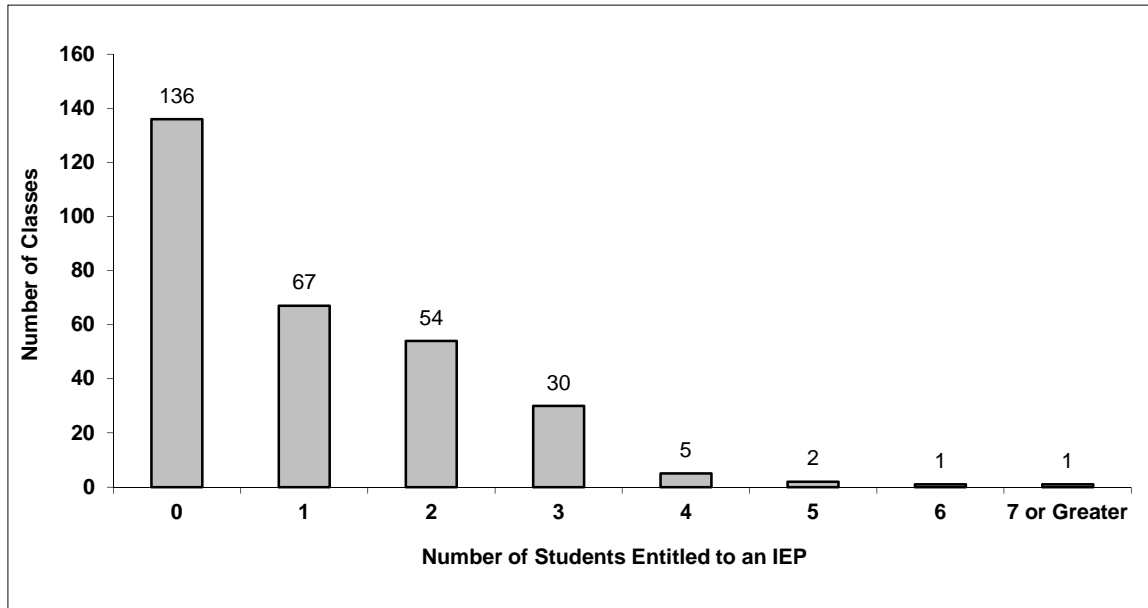
Number of Reported Classes in District with more than 30 Students	154
-------------------------------------------------------------------	-----

# District - Students Entitled to an Individual Education Plan (IEP)

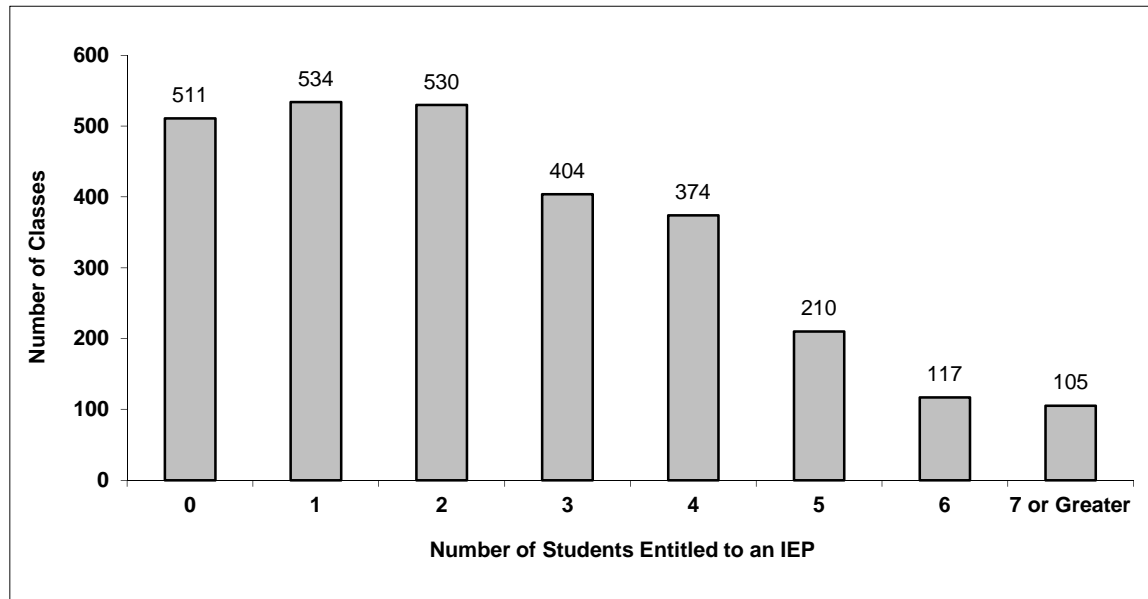
## 023 Central Okanagan

Source: Class size data collection (as of October 31) from BC public schools.

Grades K-3 - Number of Classes in District with 'X' Number of Students Entitled to an IEP



Grades 4-12 - Number of Classes in District with 'X' Number of Students Entitled to an IEP

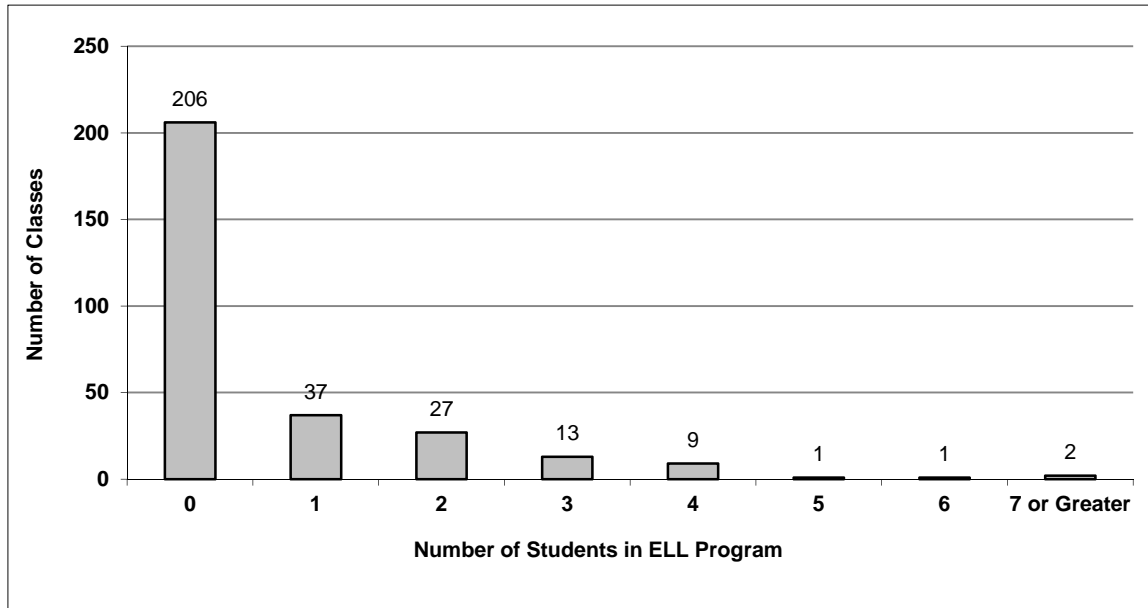


# District - English Language Learners (ELL)

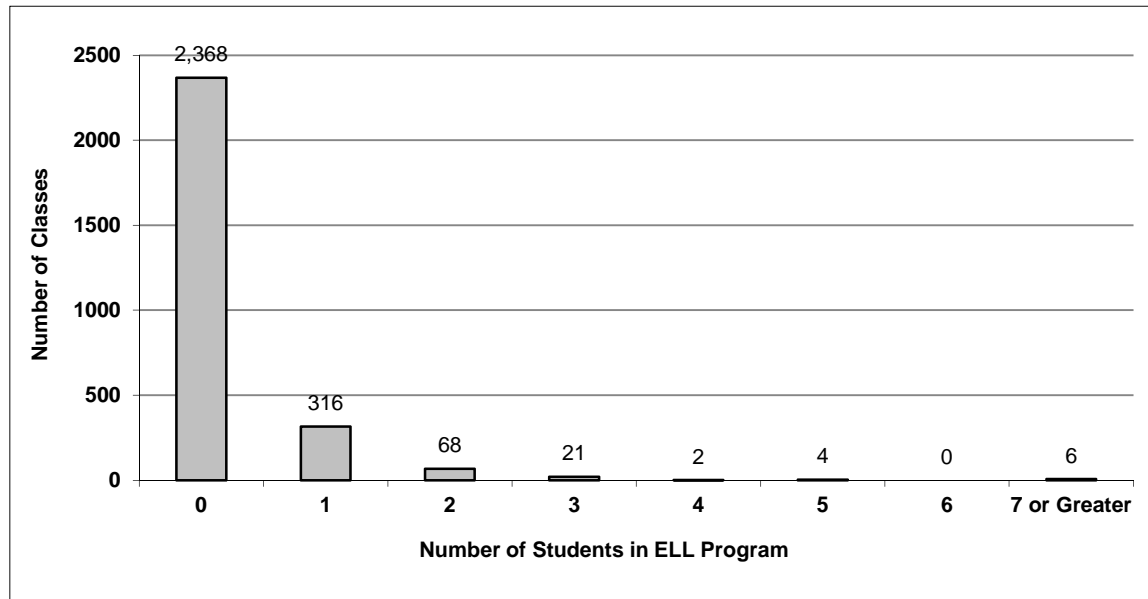
## 023 Central Okanagan

Source: Class size data collection (as of October 31) from BC public schools.

Grades K-3 - Number of Classes in District with 'X' Number of ELL



Grades 4-12 - Number of Classes in District with 'X' Number of ELL



## 023 Central Okanagan - Average Class Size by School

Source: Class size data collection (as of October 31) from BC public schools.

Ministry Code	School Name	Kindergarten	Grade 1 - 3	Grade 4 - 7	Grade 8 - 12
02323031	A S Matheson Elementary	17.5	22.5	26.5	-
02323070	Anne McClymont Elementary	22.0	23.0	27.6	-
02323034	Bankhead Elementary	21.3	23.3	24.5	-
02323043	Belgo Elementary School	20.4	22.1	27.1	-
02323056	Black Mountain Elementary	19.3	23.3	27.8	-
02323046	Casorso Elementary	20.4	22.5	28.3	-
02323073	Chief Tomat Elementary	22.0	22.6	26.6	-
02323078	Chute Lake Elementary	22.0	23.9	30.0	-
02323075	Constable Neil Bruce Middle School	-	-	27.0	26.2
02323066	Davidson Road Elementary	22.0	23.7	29.6	-
02323030	Dorothea Walker Elementary	19.0	20.8	27.3	-
02323029	Dr Knox Middle School	-	-	24.6	25.1
02323072	Ellison Elementary	19.6	22.5	25.1	-
02323080	George Elliot Secondary	-	-	26.6	22.3
02323016	George Pringle Elementary	21.6	22.7	28.6	-
02323018	Glenmore Elementary	21.6	23.1	28.2	-
02323049	Glenrosa Elementary	18.4	21.3	27.8	-
02323071	Glenrosa Middle School	-	-	22.8	22.9
02323058	Helen Gorman Elementary	22.0	22.9	28.2	-
02323052	Hudson Road Elementary	21.0	23.8	28.5	-
02323038	KLO Middle School	-	-	25.5	25.3
02323076	Kelowna Secondary	-	-	-	22.9
02323079	Mar Jok Elementary	22.0	23.9	28.8	-
02323051	Mount Boucherie Senior Secondary	-	-	-	20.3
02323032	North Glenmore Elementary	20.7	23.3	29.7	-
02323081	Okanagan Mission Secondary	-	-	26.2	23.6
02323008	Oyama Traditional School	18.0	21.5	24.2	-
02323042	Peachland Elementary	21.0	22.9	24.3	-
02323048	Pearson Road Elementary	18.5	23.4	27.3	-
02323061	Peter Greer Elementary	20.5	21.2	25.6	-
02323060	Quigley Elementary	19.2	23.3	28.3	-
02323014	Raymer Elementary	19.2	21.3	26.5	-
02323065	Rose Valley Elementary	19.0	22.5	25.8	-
02323077	Rutland Elementary	22.0	22.8	25.7	-
02323015	Rutland Middle School	-	-	22.6	23.8
02323044	Rutland Senior Secondary	-	-	-	22.8
02323067	Shannon Lake Elementary	17.0	23.6	28.5	-
02323022	South Kelowna Elementary	17.6	23.2	29.4	-
02323033	South Rutland Elementary	20.3	22.7	27.9	-
02323050	Springvalley Elementary	20.0	24.0	28.0	-
02323047	Springvalley Middle School	-	-	22.2	23.3
02323074	Watson Road Elementary	21.7	22.7	28.9	-

---

## Glossary

---

Term	Definition / Notes
English Language Learners (ELL)	<ul style="list-style-type: none"><li>• A program offered to students whose primary language(s) is/are other than English, and who may require additional services.</li></ul>
Grade	<ul style="list-style-type: none"><li>• The assigned grade of a student on October 31.</li></ul>
K	<ul style="list-style-type: none"><li>• Kindergarten</li></ul>
Number of Students	<ul style="list-style-type: none"><li>• Student population is calculated by headcount.</li></ul>
Student	<ul style="list-style-type: none"><li>• A person enrolled in a BC school. Student populations are calculated by headcount. Students include all adult and school-aged persons who are working toward a certificate of graduation.</li></ul>
Student Entitled to an Individual Education Plan	<ul style="list-style-type: none"><li>• A student for whom an Individual Education Plan (IEP) must be designed under the Individual Education Plan order, Ministerial Order 638/95.</li></ul>