

Overview of Class Size and Composition in British Columbia Public Schools 2014/15

School District 035 Langley

These class size data are current as of October 31, 2014 and have been verified by school districts.

PLEASE NOTE

The Ministry makes small and continuous improvements to the quality of its data. Sometimes these changes result in differences from previously published reports. The data in this report are the most accurate data available at time of publication.

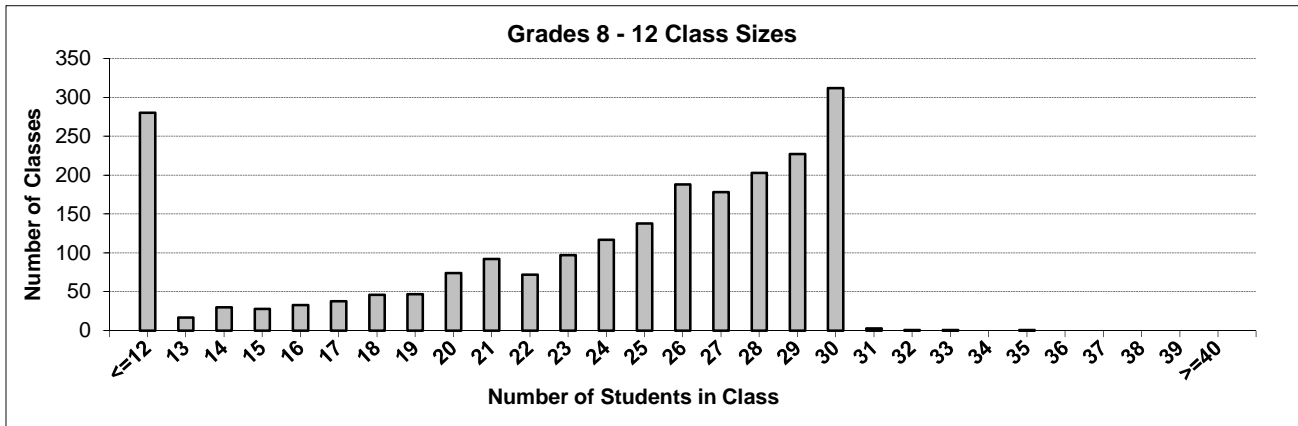
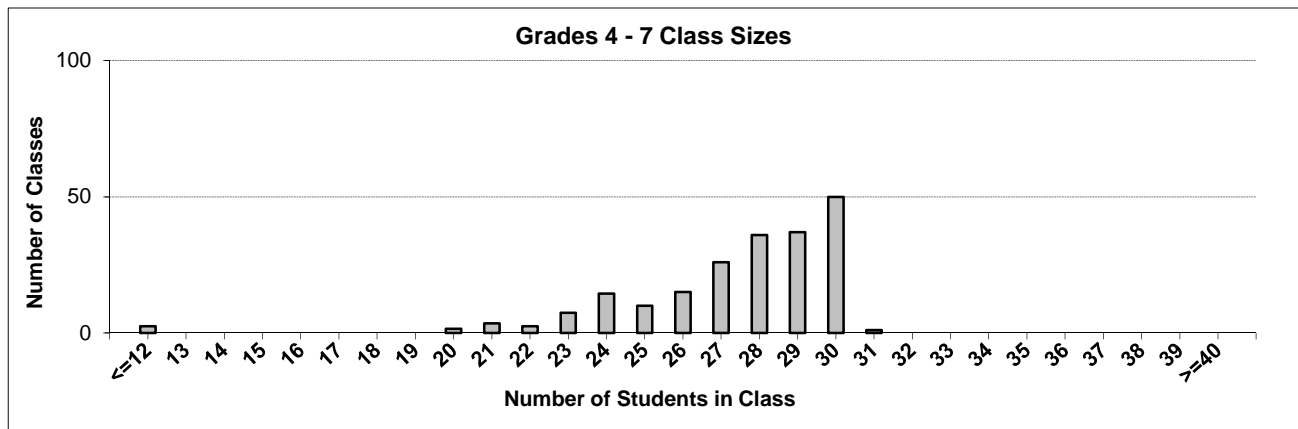
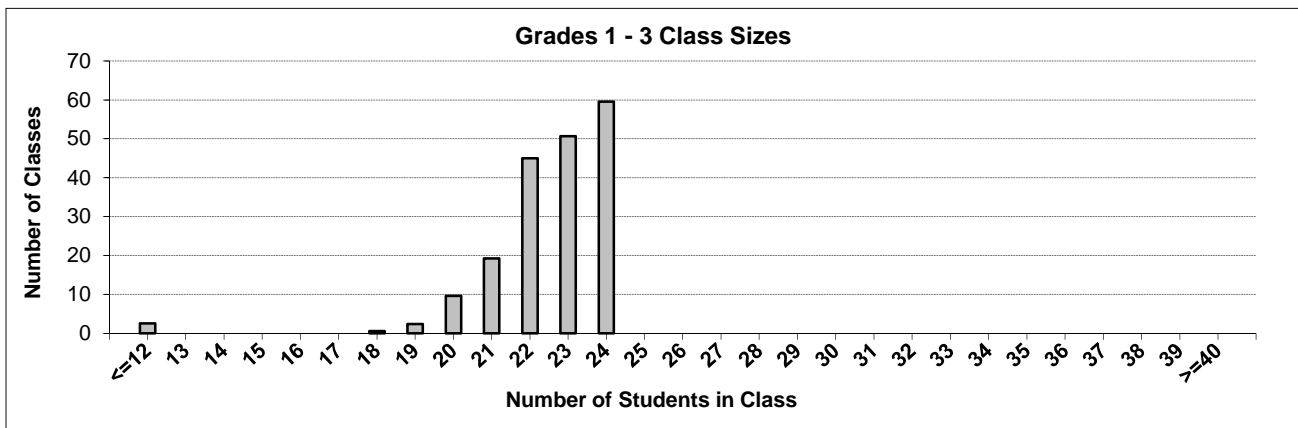
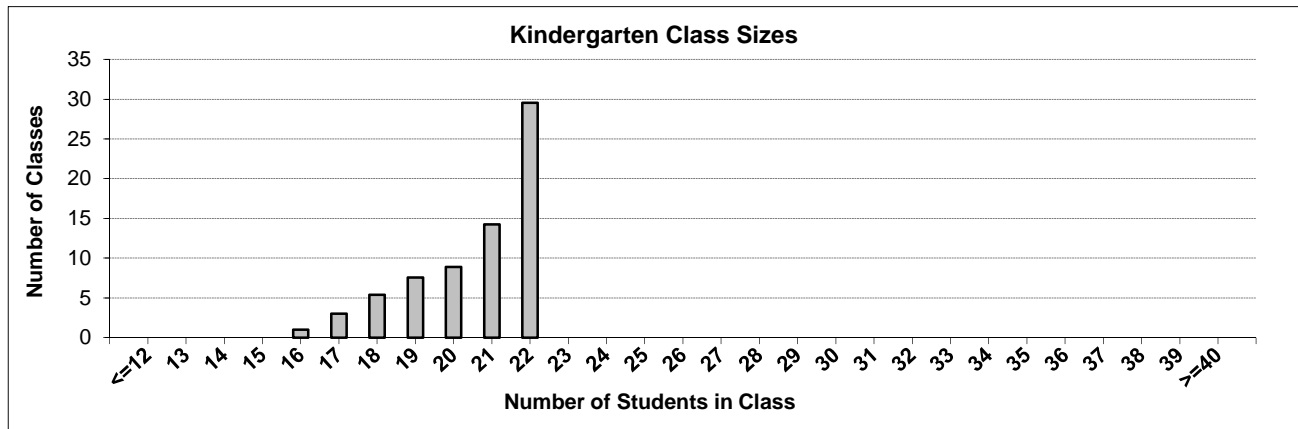
Ministry reports are available at <http://www.bced.gov.bc.ca/reporting/>

Contact the Analysis and Reporting Unit at educ.reportingunit@gov.bc.ca

District Class Sizes

035 Langley

Source: Class size data collection (as of October 31) from BC public schools.



District - Average Class Size

035 Langley

Source: Class size data collection (as of October 31) from BC public schools.

District - Average Class Size	Kindergarten	Grade 1 - 3	Grade 4 - 7	Grade 8 - 12
	20.6	22.4	27.3	22.7

Province - Average Class Size	Kindergarten	Grade 1 - 3	Grade 4 - 7	Grade 8 - 12
	19.5	21.5	25.6	23.2

Number of Reported Classes with Assigned Education Assistants	1,006
---	-------

Number of Reported Schools in District	41
--	----

Number of Reported Classes in District	2,689
--	-------

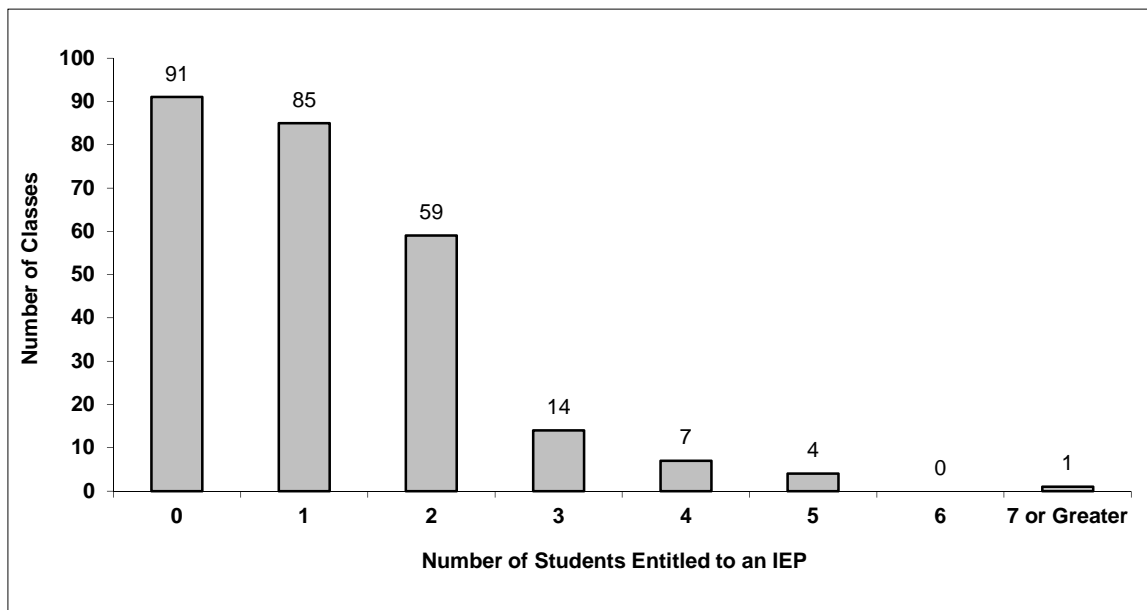
Number of Reported Classes in District with more than 30 Students	7
---	---

District - Students Entitled to an Individual Education Plan (IEP)

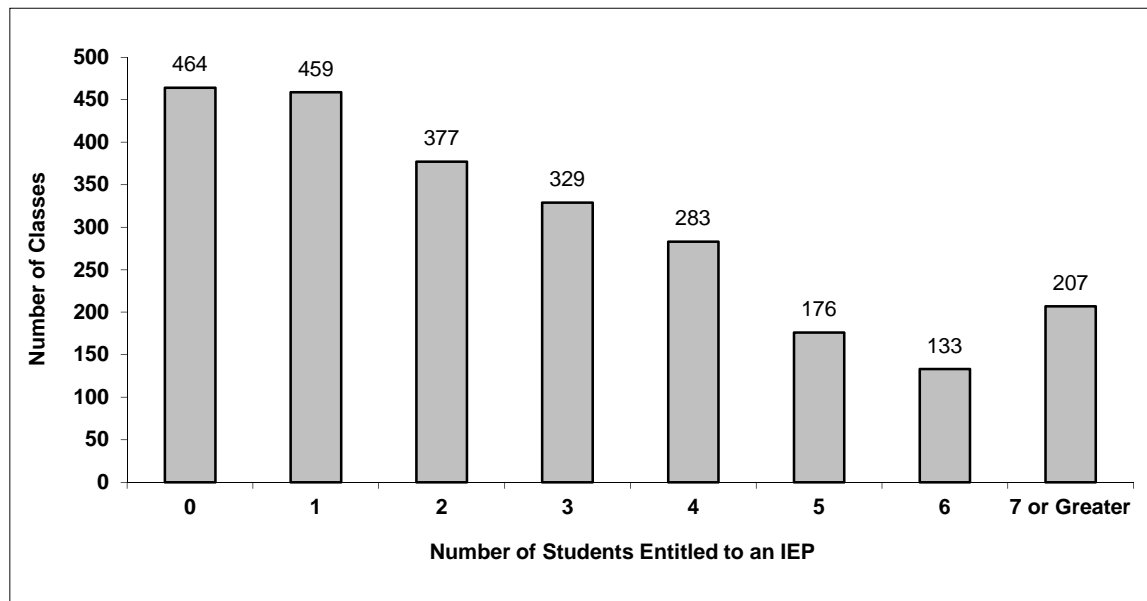
035 Langley

Source: Class size data collection (as of October 31) from BC public schools.

Grades K-3 - Number of Classes in District with 'X' Number of Students Entitled to an IEP



Grades 4-12 - Number of Classes in District with 'X' Number of Students Entitled to an IEP

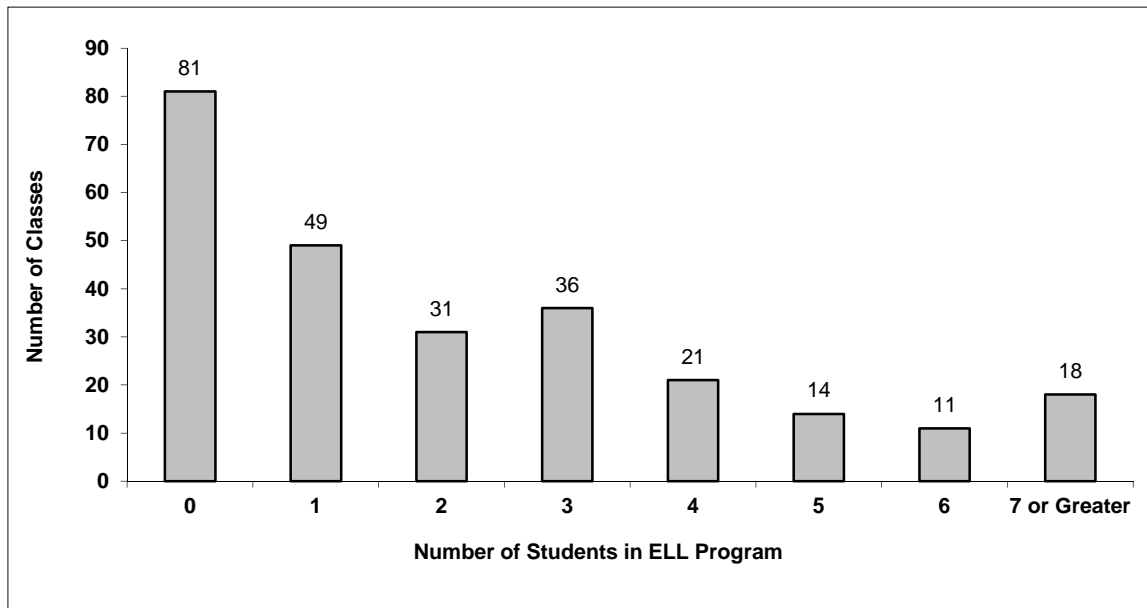


District - English Language Learners (ELL)

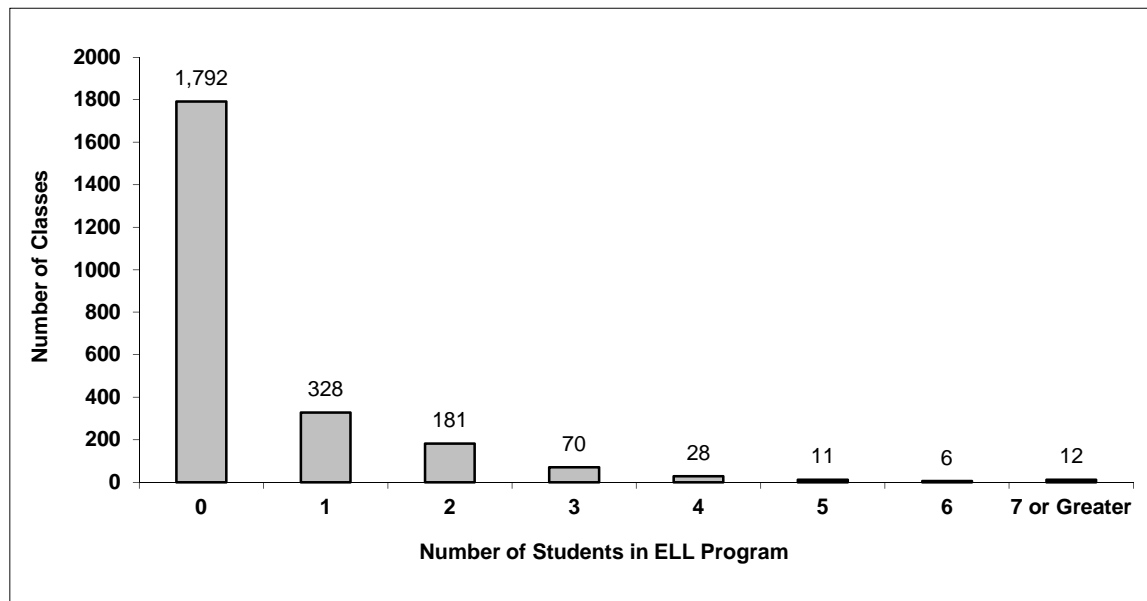
035 Langley

Source: Class size data collection (as of October 31) from BC public schools.

Grades K-3 - Number of Classes in District with 'X' Number of ELL



Grades 4-12 - Number of Classes in District with 'X' Number of ELL



035 Langley - Average Class Size by School

Source: Class size data collection (as of October 31) from BC public schools.

Ministry Code	School Name	Kindergarten	Grade 1 - 3	Grade 4 - 7	Grade 8 - 12
03535020	Aldergrove Community Secondary	-	-	-	18.4
03535047	Alex Hope Elementary	21.6	23.1	25.3	-
03535038	Alice Brown Elementary	21.4	23.8	28.0	-
03535009	Belmont Elementary	20.9	22.4	25.2	-
03535058	Betty Gilbert Middle	-	-	26.9	24.3
03535033	Blacklock Fine Arts Elementary	20.5	23.6	26.7	-
03535036	Brookwood Secondary	-	-	-	21.8
03535023	Coghlan Fundamental Elementary	17.0	23.8	26.0	-
03535034	D W Poppy Secondary	-	-	-	19.5
03535053	Dorothy Peacock Elementary	21.3	22.5	28.6	-
03535045	Douglas Park Community	19.0	21.7	24.2	-
03535002	Fort Langley Elementary	22.0	20.9	26.7	-
03535017	Glenwood Elementary	19.0	23.1	27.6	-
03535048	Gordon Greenwood Elementary	22.0	21.4	28.4	-
03535057	H D Stafford Middle	-	-	23.8	23.1
03535051	James Hill Elementary	20.5	21.7	25.7	-
03535040	James Kennedy Elementary	19.8	22.5	29.7	-
03535059	Langley Fine Arts Elementary	-	20.9	30.0	-
03535060	Langley Fine Arts Secondary	-	-	-	22.8
03535052	Langley Fundamental Elementary	22.0	23.1	30.0	-
03535056	Langley Fundamental Middle/Secondary Sch	-	-	30.0	23.4
03535046	Langley Meadows Elementary	21.2	23.4	26.1	-
03535019	Langley Secondary	-	-	-	21.0
03535061	Lynn Fripps Elementary	21.3	17.9	28.9	-
03535037	Nicomekl Elementary	19.0	22.8	26.0	-
03535044	Noel Booth Elementary	22.0	23.5	26.8	-
03535015	North Otter Elementary	21.4	23.7	27.8	-
03535032	Parkside Centennial Elementary	21.3	23.8	27.0	-
03535026	Peterson Road Elementary	22.0	23.3	27.6	-
03535055	R C Garnett Demonstration Elementary	19.2	22.5	28.9	-
03535041	R E Mountain Secondary	-	-	-	23.4
03535062	Richard Bulpitt Elementary	20.0	22.4	27.8	-
03535042	Shortreed Community School	22.0	22.9	28.8	-
03535022	Simonds Elementary	19.4	21.1	25.9	-
03535054	Topham Elementary	21.3	22.4	27.5	-
03535039	Uplands Elementary	21.0	22.4	24.3	-
03535050	Walnut Grove Secondary	-	-	-	24.1
03535043	West Langley Elementary	17.0	22.6	27.1	-
03535016	Willoughby Elementary	20.3	22.2	28.2	-
03535024	Wix-Brown Elementary	22.0	22.7	26.7	-
03535063	Yorkson Creek Middle School	-	-	28.7	27.3

Glossary

Term	Definition / Notes
English Language Learners (ELL)	<ul style="list-style-type: none">• A program offered to students whose primary language(s) is/are other than English, and who may require additional services.
Grade	<ul style="list-style-type: none">• The assigned grade of a student on October 31.
K	<ul style="list-style-type: none">• Kindergarten
Number of Students	<ul style="list-style-type: none">• Student population is calculated by headcount.
Student	<ul style="list-style-type: none">• A person enrolled in a BC school. Student populations are calculated by headcount. Students include all adult and school-aged persons who are working toward a certificate of graduation.
Student Entitled to an Individual Education Plan	<ul style="list-style-type: none">• A student for whom an Individual Education Plan (IEP) must be designed under the Individual Education Plan order, Ministerial Order 638/95.