

Overview of Class Size and Composition in British Columbia Public Schools 2014/15

School District 028 Quesnel

These class size data are current as of October 31, 2014 and have been verified by school districts.

PLEASE NOTE

The Ministry makes small and continuous improvements to the quality of its data. Sometimes these changes result in differences from previously published reports. The data in this report are the most accurate data available at time of publication.

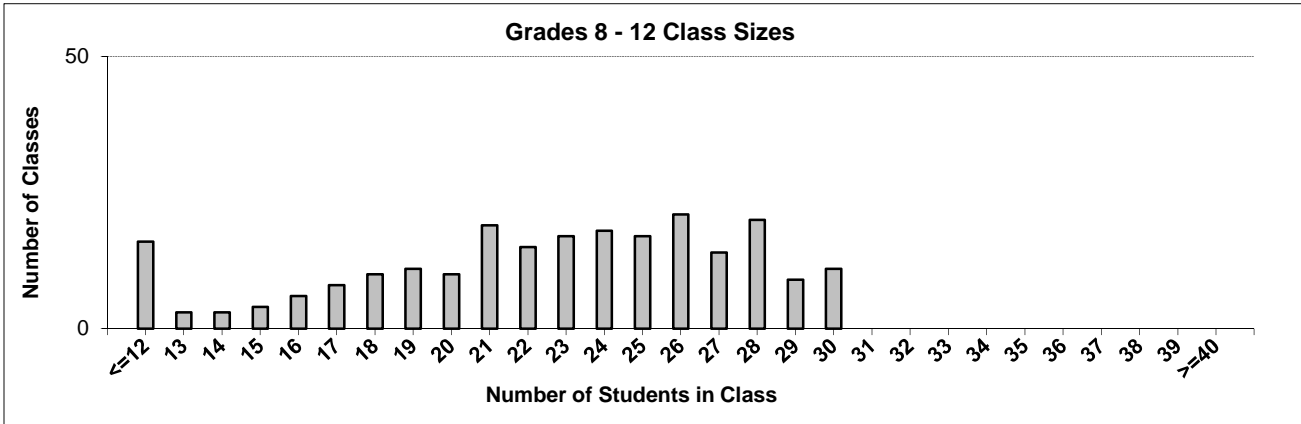
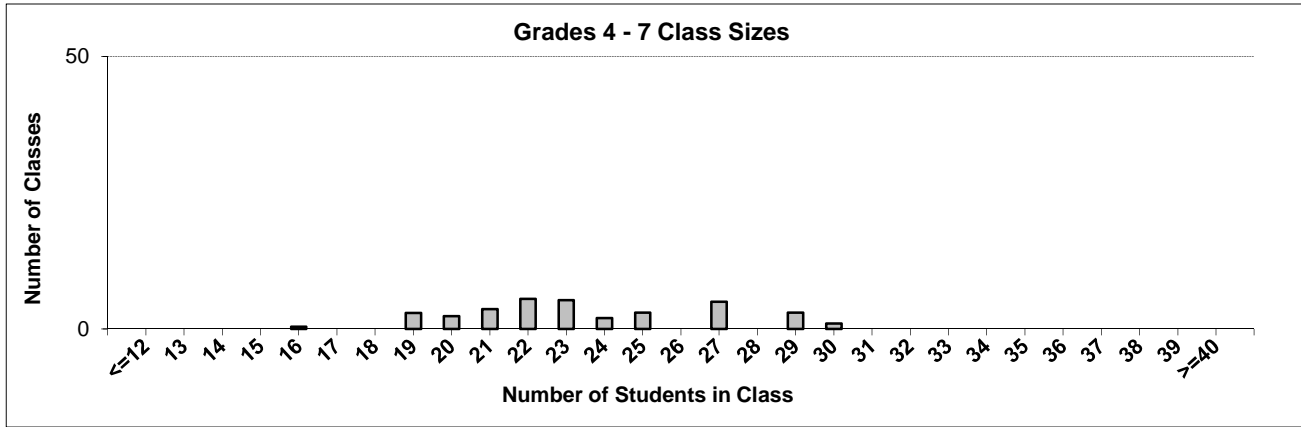
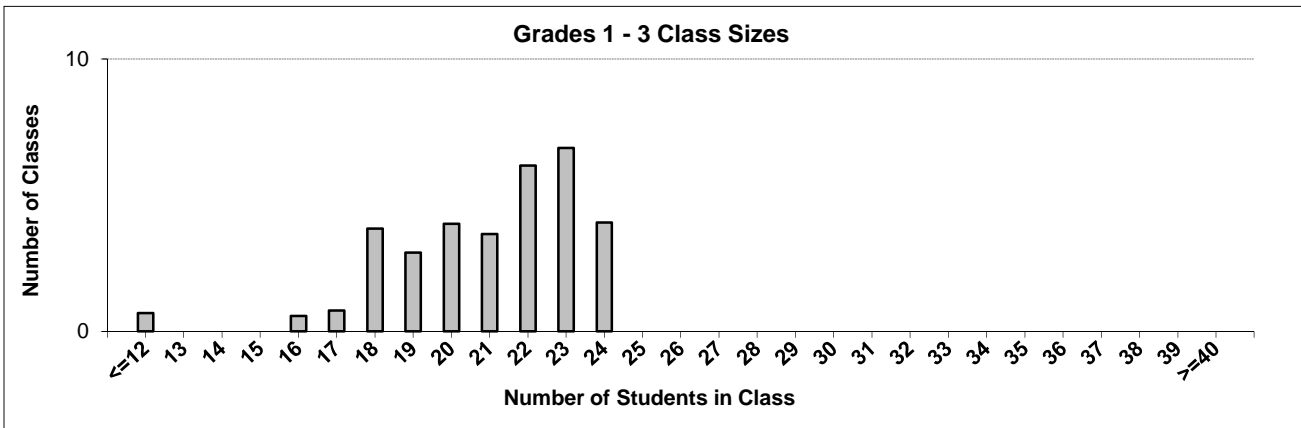
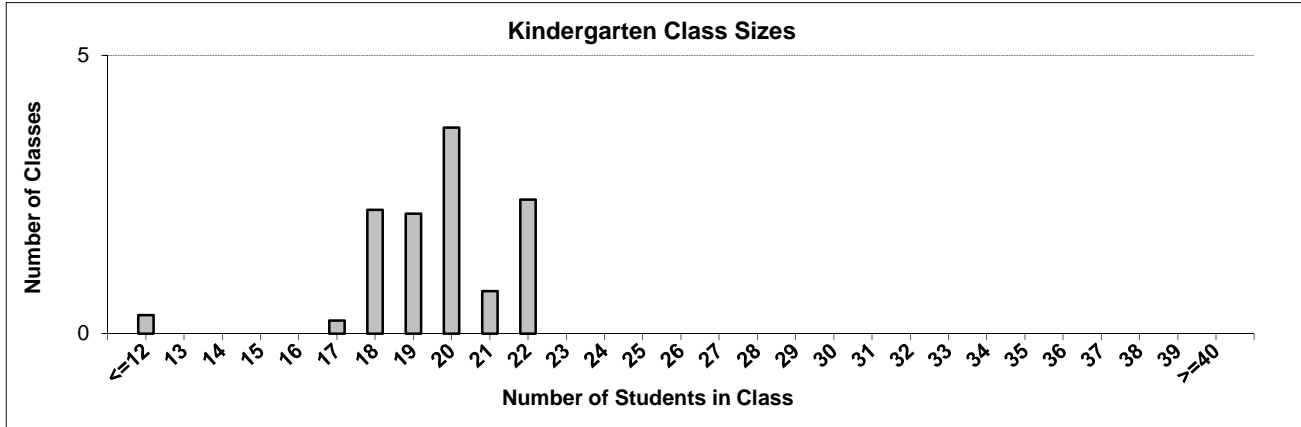
Ministry reports are available at <http://www.bced.gov.bc.ca/reporting/>

Contact the Analysis and Reporting Unit at educ.reportingunit@gov.bc.ca

District Class Sizes

028 Quesnel

Source: Class size data collection (as of October 31) from BC public schools.



District - Average Class Size

028 Quesnel

Source: Class size data collection (as of October 31) from BC public schools.

District - Average Class Size	Kindergarten	Grade 1 - 3	Grade 4 - 7	Grade 8 - 12
	19.6	21.0	23.5	22.1

Province - Average Class Size	Kindergarten	Grade 1 - 3	Grade 4 - 7	Grade 8 - 12
	19.5	21.5	25.6	23.2

Number of Reported Classes with Assigned Education Assistants	140
---	-----

Number of Reported Schools in District	15
--	----

Number of Reported Classes in District	311
--	-----

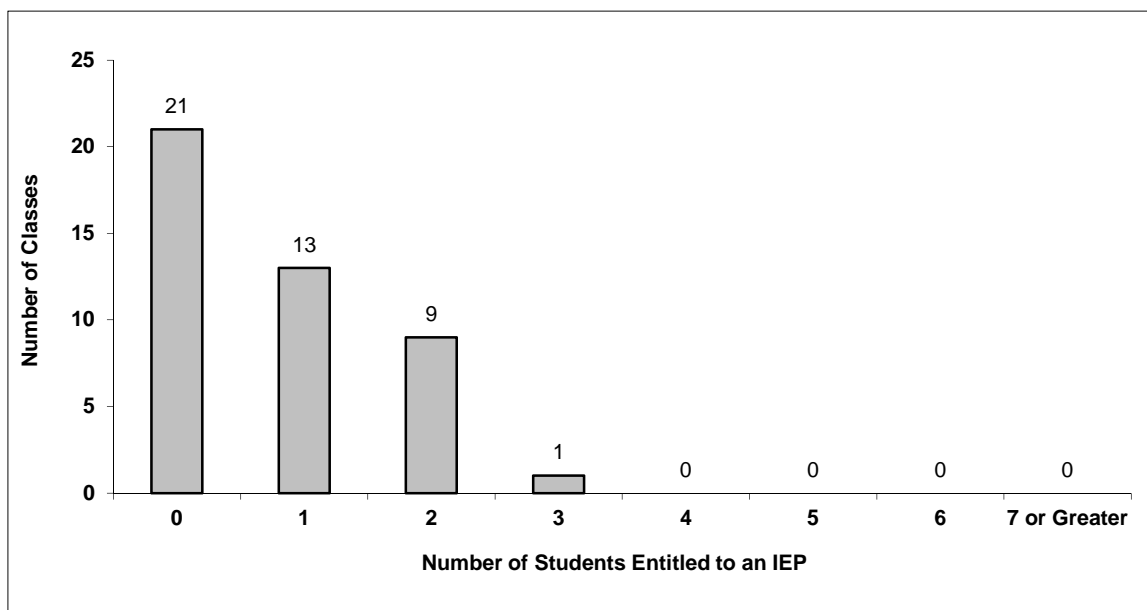
Number of Reported Classes in District with more than 30 Students	0
---	---

District - Students Entitled to an Individual Education Plan (IEP)

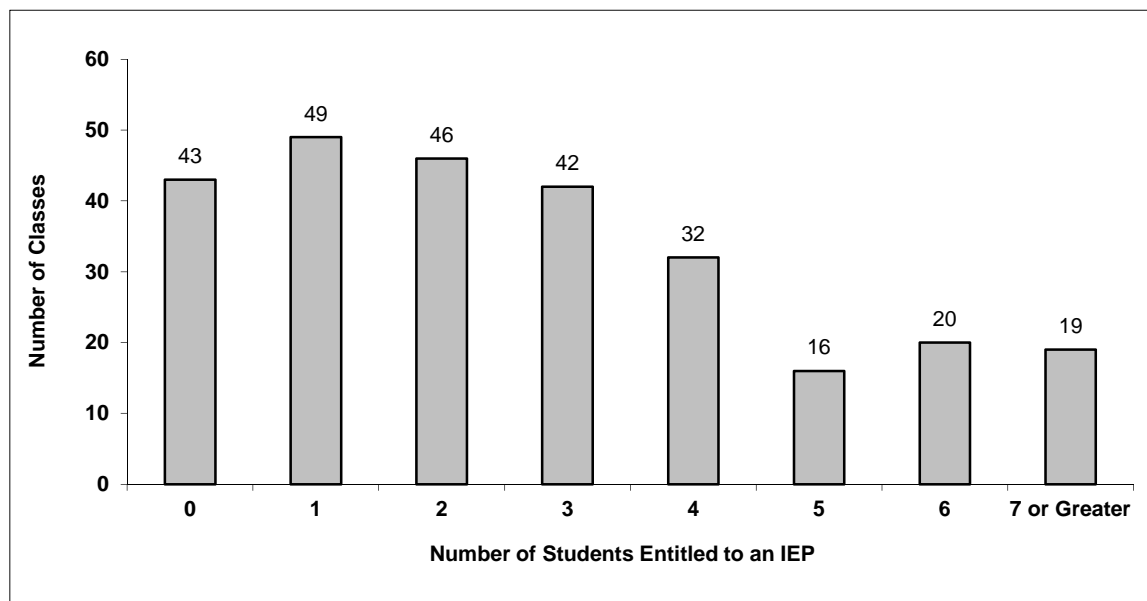
028 Quesnel

Source: Class size data collection (as of October 31) from BC public schools.

Grades K-3 - Number of Classes in District with 'X' Number of Students Entitled to an IEP



Grades 4-12 - Number of Classes in District with 'X' Number of Students Entitled to an IEP

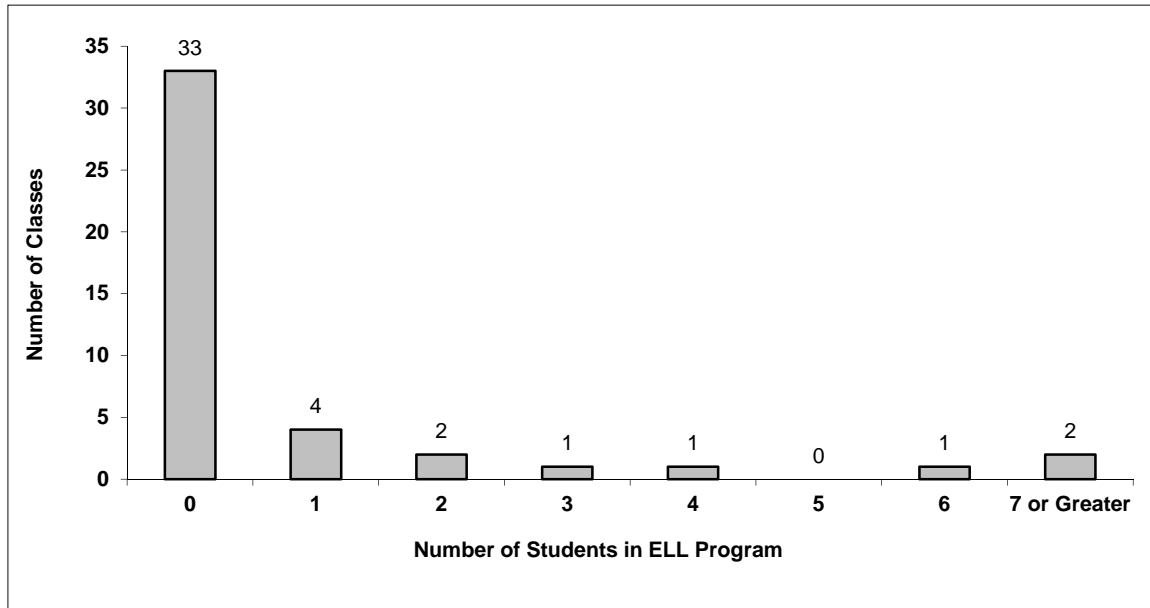


District - English Language Learners (ELL)

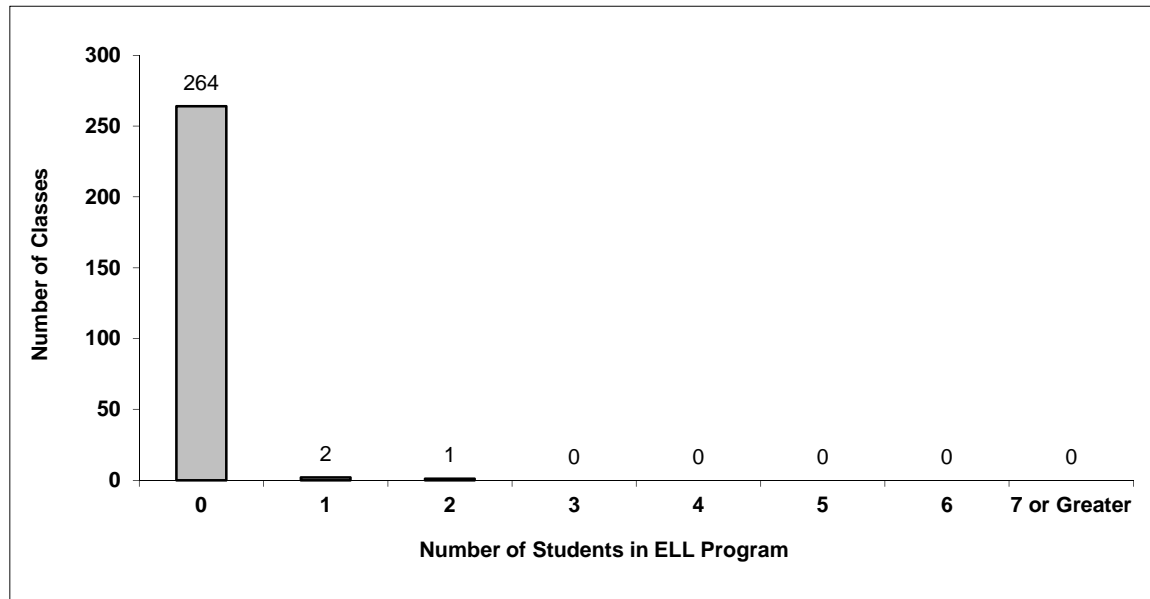
028 Quesnel

Source: Class size data collection (as of October 31) from BC public schools.

Grades K-3 - Number of Classes in District with 'X' Number of ELL



Grades 4-12 - Number of Classes in District with 'X' Number of ELL



028 Quesnel - Average Class Size by School

Source: Class size data collection (as of October 31) from BC public schools.

Ministry Code	School Name	Kindergarten	Grade 1 - 3	Grade 4 - 7	Grade 8 - 12
02828040	Barlow Creek Elementary	22.0	22.6	23.0	-
02828020	Bouchie Lake Elementary School	20.0	22.1	26.5	-
02828024	Carson Elementary School	18.4	21.7	24.8	-
02828034	Correlieu Secondary School	-	-	-	24.6
02828021	Dragon Lake Elementary	19.7	21.9	26.3	-
02828019	Ecole Baker	19.9	20.8	22.6	-
02828008	Kersley Elementary School	19.0	19.0	19.0	-
02828032	Lakeview Elementary	21.5	22.9	26.8	-
02828041	Nazko Valley Elementary	12.0	13.8	16.0	-
02828038	Parkland Elementary	17.0	19.2	24.1	-
02828004	Quesnel Junior School	-	-	-	19.3
02828016	Red Bluff Lhtako Elementary	19.0	18.6	22.5	-
02828039	Riverview Elementary	19.0	19.9	22.0	-
02828036	Voyageur Elementary School	20.3	22.4	21.0	-
02828002	Wells Barkerville Elementary	20.0	20.0	20.0	-

Glossary

Term	Definition / Notes
English Language Learners (ELL)	• A program offered to students whose primary language(s) is/are other than English, and who may require additional services.
Grade	• The assigned grade of a student on October 31.
K	• Kindergarten
Number of Students	• Student population is calculated by headcount.
Student	• A person enrolled in a BC school. Student populations are calculated by headcount. Students include all adult and school-aged persons who are working toward a certificate of graduation.
Student Entitled to an Individual Education Plan	• A student for whom an Individual Education Plan (IEP) must be designed under the Individual Education Plan order, Ministerial Order 638/95.