

Overview of Class Size and Composition in British Columbia Public Schools 2014/15

School District 008 Kootenay Lake

These class size data are current as of October 31, 2014 and have been verified by school districts.

PLEASE NOTE

The Ministry makes small and continuous improvements to the quality of its data. Sometimes these changes result in differences from previously published reports. The data in this report are the most accurate data available at time of publication.

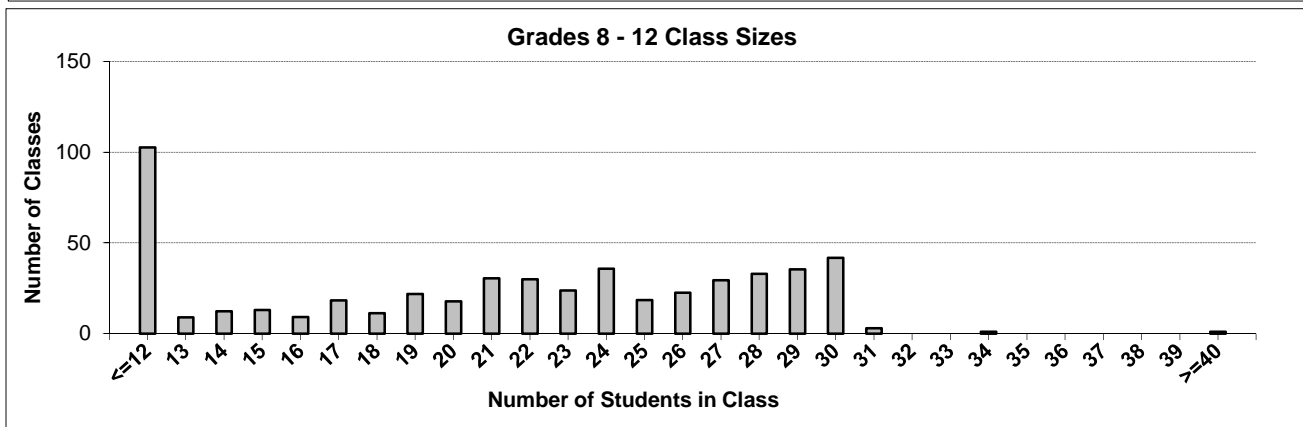
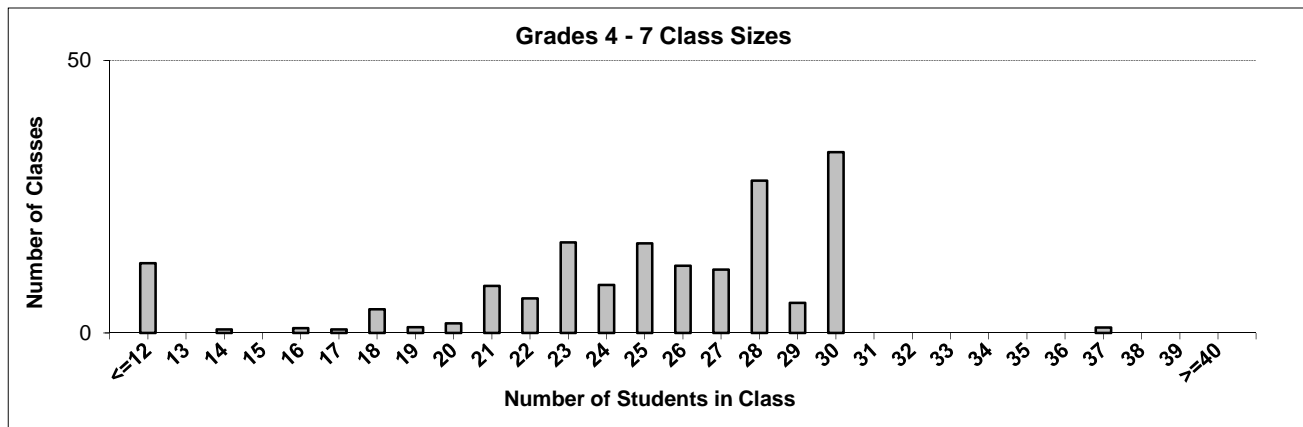
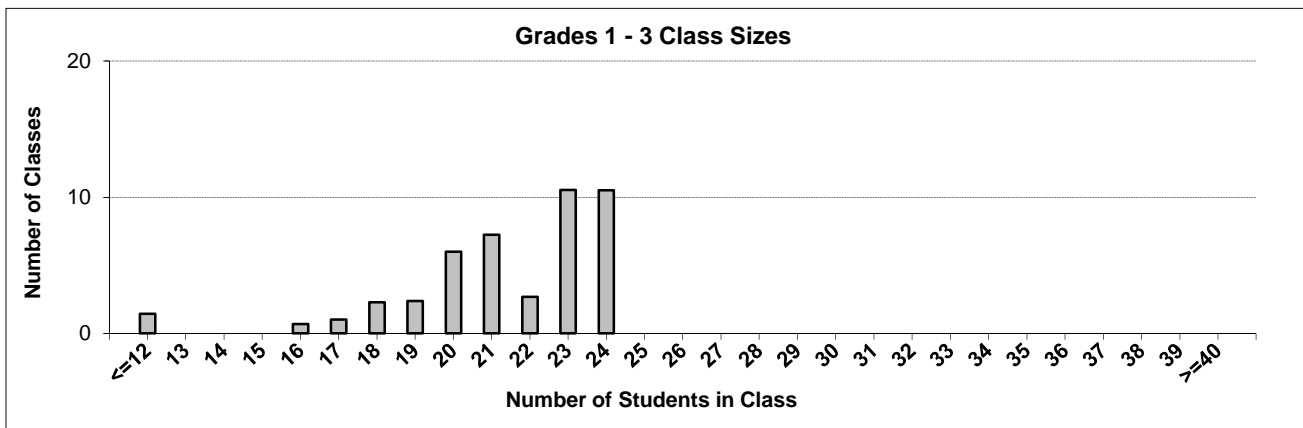
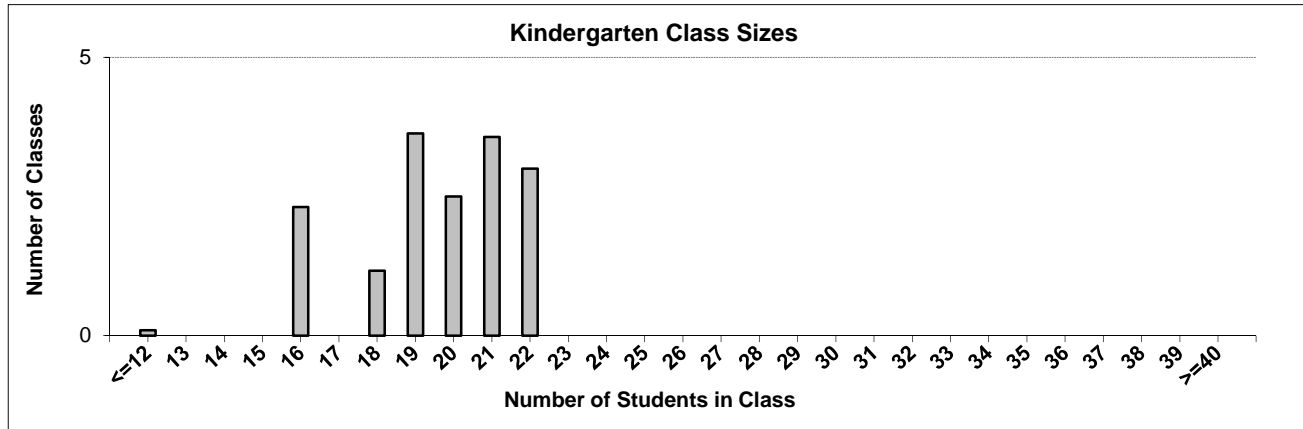
Ministry reports are available at <http://www.bced.gov.bc.ca/reporting/>

Contact the Analysis and Reporting Unit at educ.reportingunit@gov.bc.ca

District Class Sizes

008 Kootenay Lake

Source: Class size data collection (as of October 31) from BC public schools.



District - Average Class Size

008 Kootenay Lake

Source: Class size data collection (as of October 31) from BC public schools.

District - Average Class Size	Kindergarten	Grade 1 - 3	Grade 4 - 7	Grade 8 - 12
	19.6	21.2	24.5	20.3

Province - Average Class Size	Kindergarten	Grade 1 - 3	Grade 4 - 7	Grade 8 - 12
	19.5	21.5	25.6	23.2

Number of Reported Classes with Assigned Education Assistants	170
---	-----

Number of Reported Schools in District	22
--	----

Number of Reported Classes in District	753
--	-----

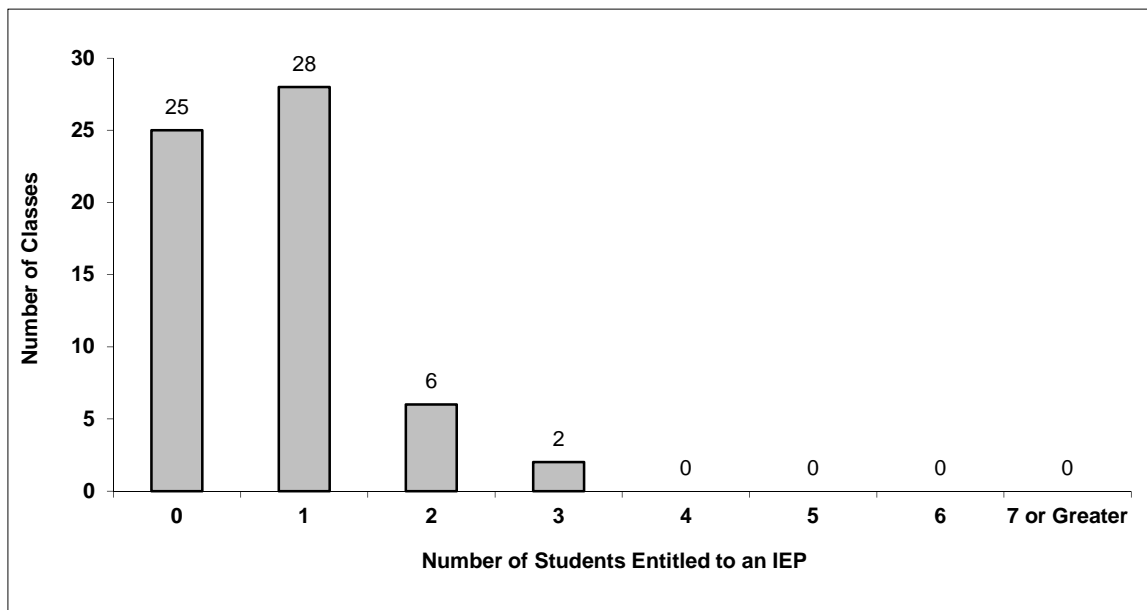
Number of Reported Classes in District with more than 30 Students	6
---	---

District - Students Entitled to an Individual Education Plan (IEP)

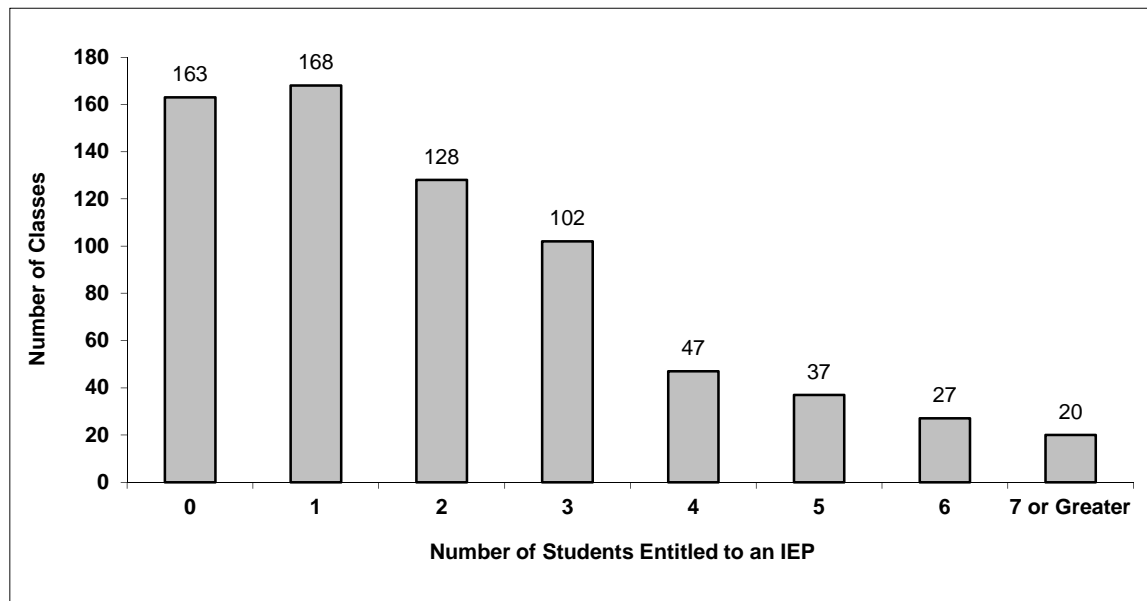
008 Kootenay Lake

Source: Class size data collection (as of October 31) from BC public schools.

Grades K-3 - Number of Classes in District with 'X' Number of Students Entitled to an IEP



Grades 4-12 - Number of Classes in District with 'X' Number of Students Entitled to an IEP

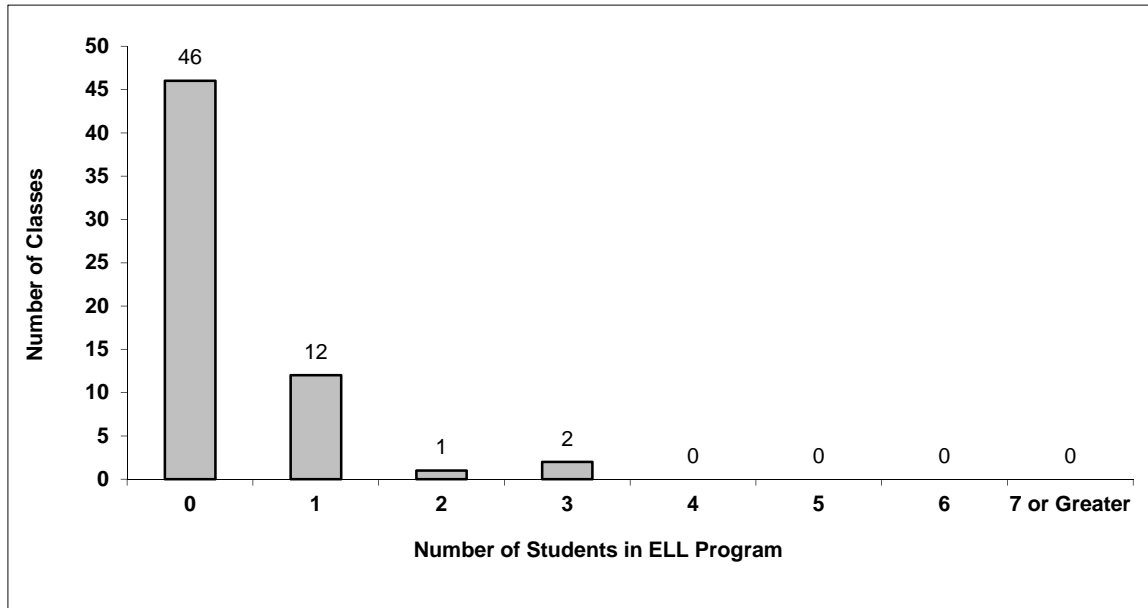


District - English Language Learners (ELL)

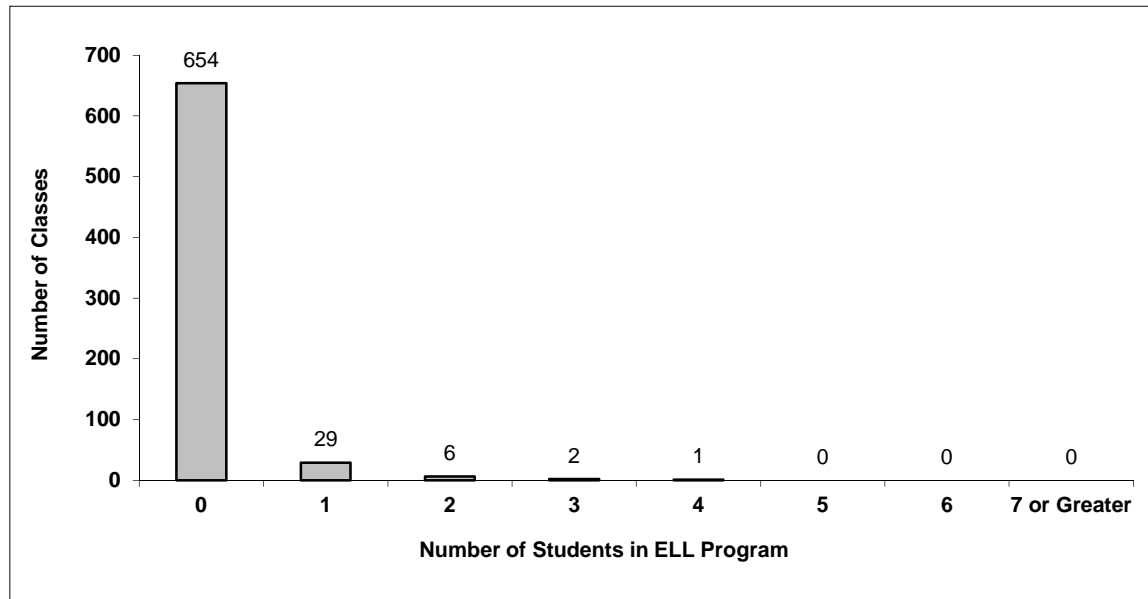
008 Kootenay Lake

Source: Class size data collection (as of October 31) from BC public schools.

Grades K-3 - Number of Classes in District with 'X' Number of ELL



Grades 4-12 - Number of Classes in District with 'X' Number of ELL



008 Kootenay Lake - Average Class Size by School

Source: Class size data collection (as of October 31) from BC public schools.

Ministry Code	School Name	Kindergarten	Grade 1 - 3	Grade 4 - 7	Grade 8 - 12
00886004	Adam Robertson Elementary	19.7	23.8	28.8	-
00807016	Blewett Elementary School	21.7	23.3	27.7	-
00807033	Brent Kennedy Elementary	21.8	22.8	26.7	-
00886014	Canyon/Lister Elementary	18.0	18.5	22.7	-
00886006	Crawford Bay Elem-Secondary	16.0	16.0	19.2	13.9
00886019	Erickson Elementary	22.0	23.6	27.3	-
00807004	Hume Elementary School	16.7	21.9	29.3	-
00886018	J V Humphries Elem-Secondary	20.0	21.4	24.3	17.4
00886005	Jewett Elementary	-	6.1	7.0	-
00807013	L V Rogers Secondary	-	-	-	23.4
00807025	Mount Sentinel Secondary	-	-	29.1	22.0
00886007	Prince Charles Secondary	-	-	-	19.4
00807035	Redfish Elementary School	21.0	22.9	30.0	-
00807018	Rosemont Elementary School	21.0	21.3	28.0	-
00807011	Salmo Elementary School	18.8	20.6	24.8	-
00807012	Salmo Secondary	-	-	21.4	15.7
00807014	South Nelson Elementary	20.0	20.0	30.0	-
00807005	Trafalgar Middle School	-	-	25.0	24.4
00807026	W.E. Graham Community School	19.0	18.2	8.4	11.6
00899178	Wildflower	-	21.4	21.2	21.0
00807034	Winlaw Elementary School	16.0	20.0	22.5	-
00886012	Yahk Elementary	10.0	10.0	10.0	-

Glossary

Term	Definition / Notes
English Language Learners (ELL)	<ul style="list-style-type: none">• A program offered to students whose primary language(s) is/are other than English, and who may require additional services.
Grade	<ul style="list-style-type: none">• The assigned grade of a student on October 31.
K	<ul style="list-style-type: none">• Kindergarten
Number of Students	<ul style="list-style-type: none">• Student population is calculated by headcount.
Student	<ul style="list-style-type: none">• A person enrolled in a BC school. Student populations are calculated by headcount. Students include all adult and school-aged persons who are working toward a certificate of graduation.
Student Entitled to an Individual Education Plan	<ul style="list-style-type: none">• A student for whom an Individual Education Plan (IEP) must be designed under the Individual Education Plan order, Ministerial Order 638/95.