

# Overview of Class Size and Composition in British Columbia Public Schools 2014/15

## School District 006 Rocky Mountain

These class size data are current as of October 31, 2014 and have been verified by school districts.



Ministry of  
Education

December 2014  
Analysis and Reporting Unit

---

**PLEASE NOTE**

The Ministry makes small and continuous improvements to the quality of its data. Sometimes these changes result in differences from previously published reports. The data in this report are the most accurate data available at time of publication.

Ministry reports are available at <http://www.bced.gov.bc.ca/reporting/>

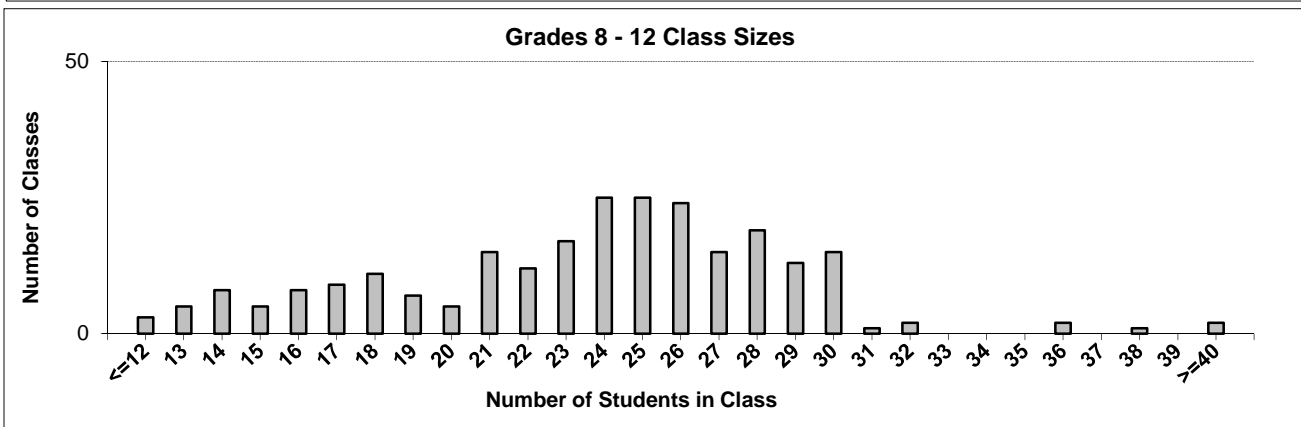
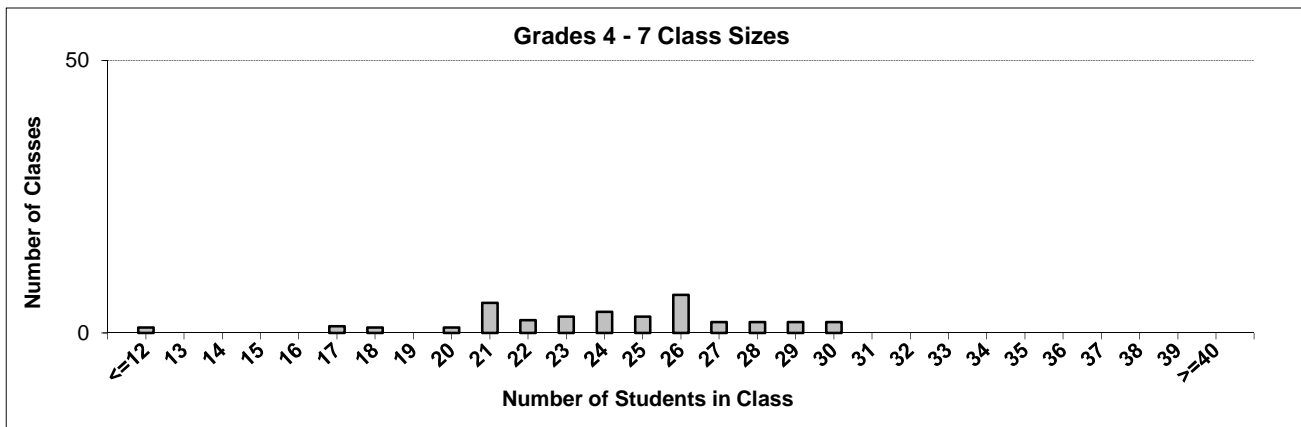
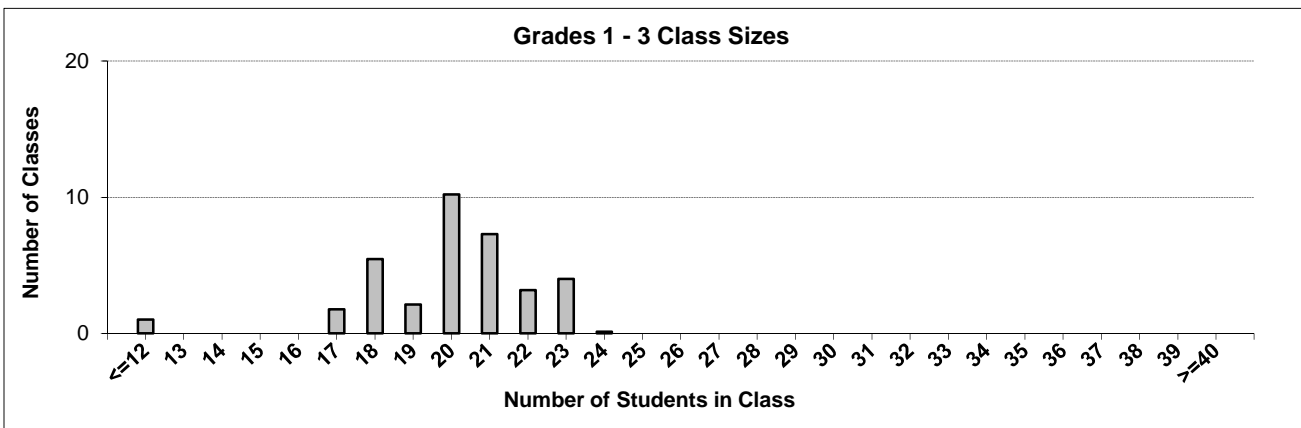
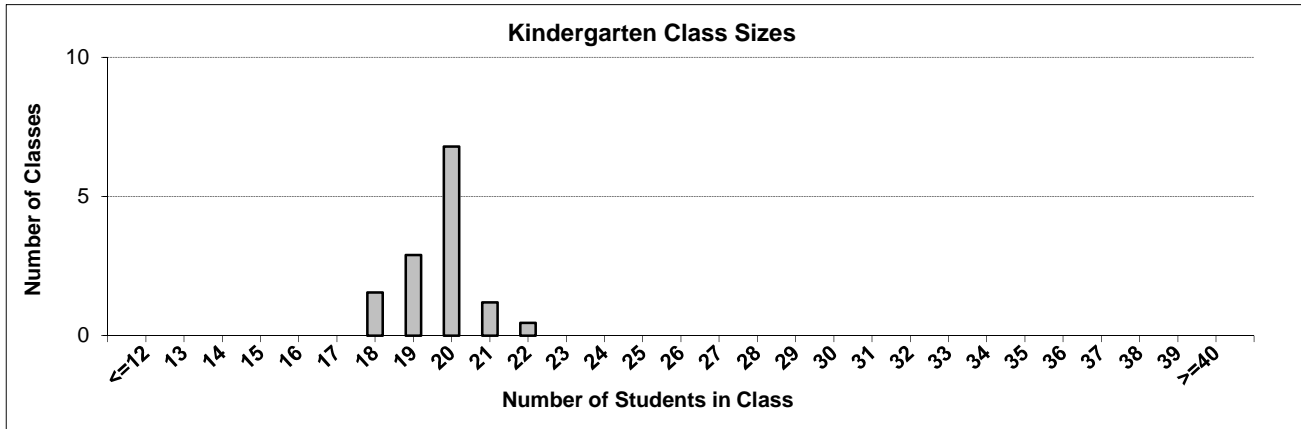
Contact the Analysis and Reporting Unit at [educ.reportingunit@gov.bc.ca](mailto:educ.reportingunit@gov.bc.ca)

---

# District Class Sizes

## 006 Rocky Mountain

Source: Class size data collection (as of October 31) from BC public schools.



---

## District - Average Class Size

---

### 006 Rocky Mountain

Source: Class size data collection (as of October 31) from BC public schools.

| District - Average Class Size | Kindergarten | Grade 1 - 3 | Grade 4 - 7 | Grade 8 - 12 |
|-------------------------------|--------------|-------------|-------------|--------------|
|                               | 19.7         | 19.8        | 23.8        | 23.6         |

| Province - Average Class Size | Kindergarten | Grade 1 - 3 | Grade 4 - 7 | Grade 8 - 12 |
|-------------------------------|--------------|-------------|-------------|--------------|
|                               | 19.5         | 21.5        | 25.6        | 23.2         |

|   |    |
|---|----|
| Number of Reported Classes with Assigned Education Assistants | 96 |
|---|----|

|  |    |
|--|----|
| Number of Reported Schools in District | 15 |
|--|----|

|  |     |
|--|-----|
| Number of Reported Classes in District | 334 |
|--|-----|

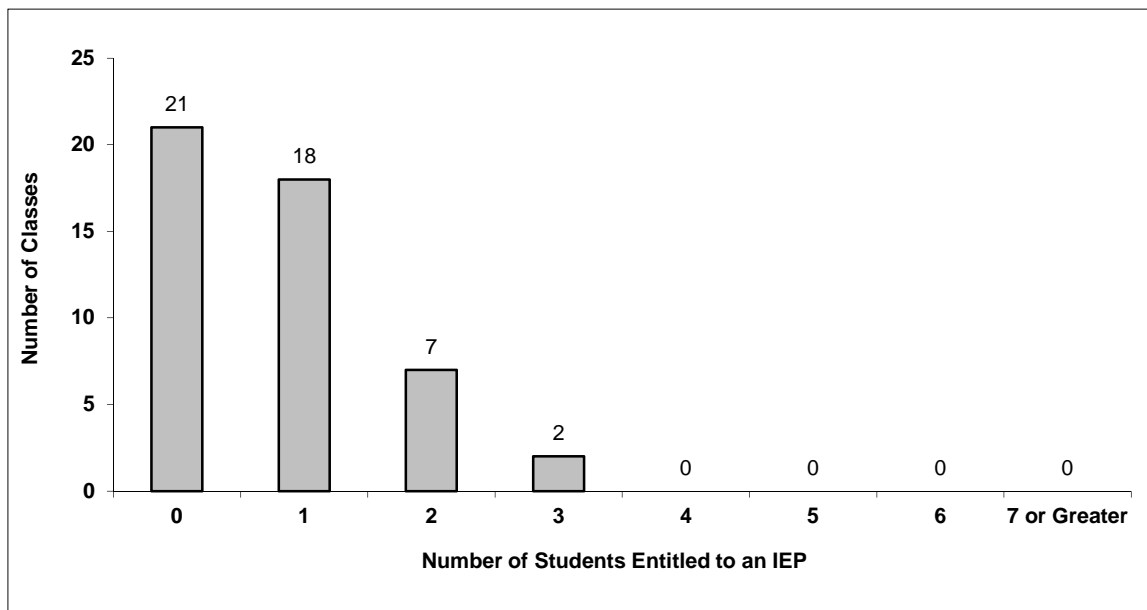
|   |   |
|---|---|
| Number of Reported Classes in District with more than 30 Students | 8 |
|---|---|

## District - Students Entitled to an Individual Education Plan (IEP)

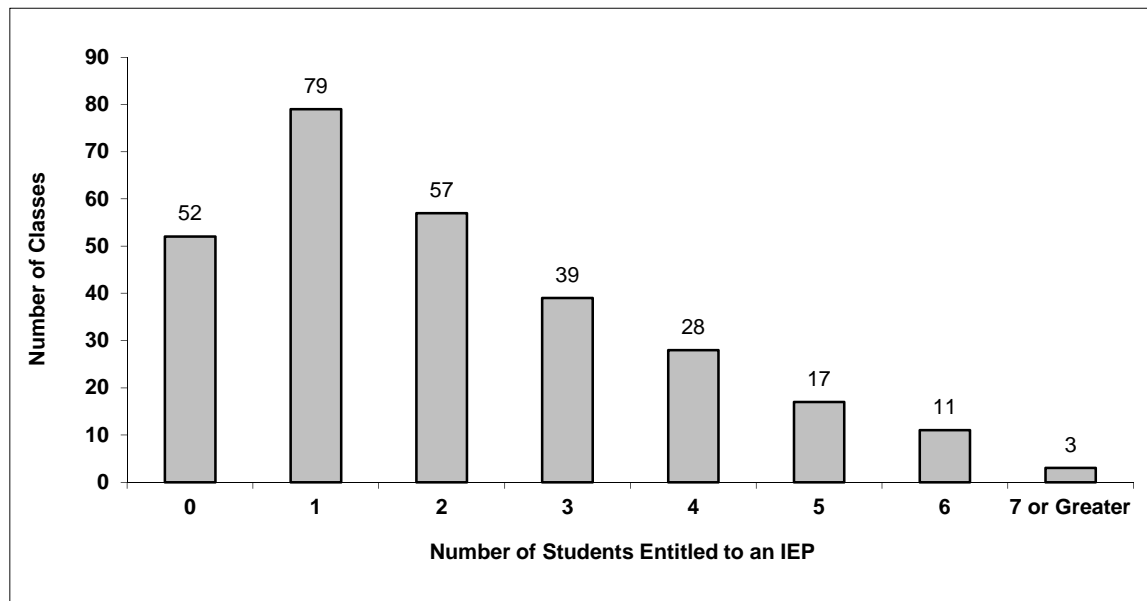
### 006 Rocky Mountain

Source: Class size data collection (as of October 31) from BC public schools.

Grades K-3 - Number of Classes in District with 'X' Number of Students Entitled to an IEP



Grades 4-12 - Number of Classes in District with 'X' Number of Students Entitled to an IEP

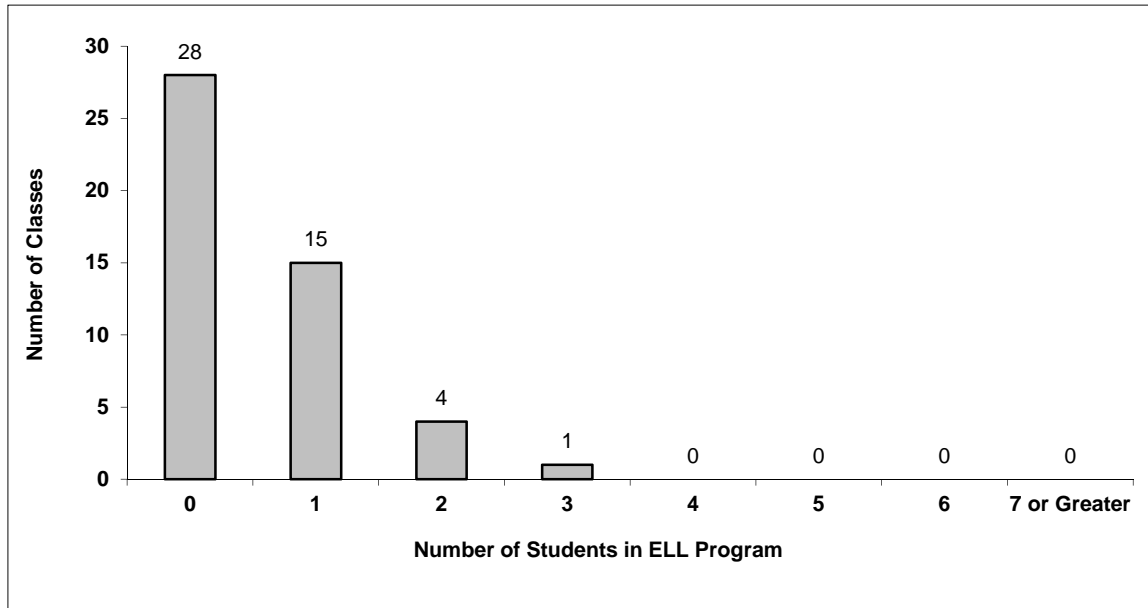


# District - English Language Learners (ELL)

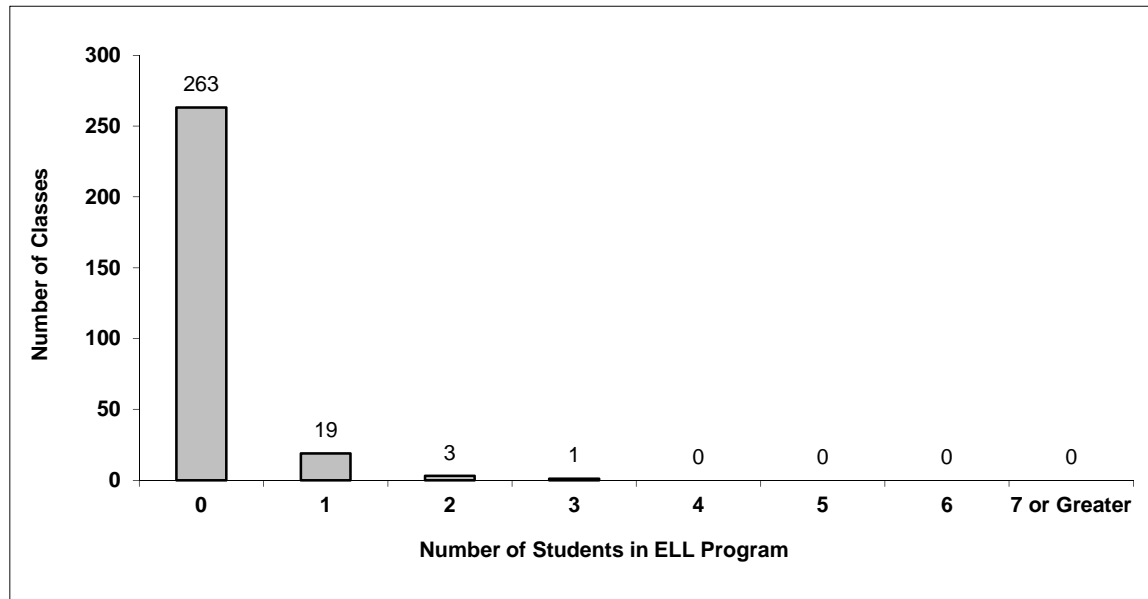
## 006 Rocky Mountain

Source: Class size data collection (as of October 31) from BC public schools.

Grades K-3 - Number of Classes in District with 'X' Number of ELL



Grades 4-12 - Number of Classes in District with 'X' Number of ELL



## 006 Rocky Mountain - Average Class Size by School

Source: Class size data collection (as of October 31) from BC public schools.

| Ministry Code | School Name                  | Kindergarten | Grade 1 - 3 | Grade 4 - 7 | Grade 8 - 12 |
|---------------|------------------------------|--------------|-------------|-------------|--------------|
| 00618008      | Alexander Park Elementary    | 19.2         | 19.9        | -           | -            |
| 00604015      | David Thompson Secondary     | -            | -           | 6.0         | 23.6         |
| 00604011      | Edgewater Elementary         | 20.0         | 20.3        | 26.9        | -            |
| 00604014      | Eileen Madson Primary School | 19.8         | 20.1        | -           | -            |
| 00618006      | Field Elementary             | -            | 5.0         | -           | -            |
| 00618005      | Golden Secondary             | -            | -           | -           | 23.6         |
| 00604012      | J Alfred Laird Elementary    | -            | -           | 22.3        | -            |
| 00618003      | Lady Grey Elementary         | -            | -           | 24.1        | -            |
| 00603007      | Lindsay Park Elementary      | 20.0         | 21.4        | -           | -            |
| 00604013      | Martin Morigeau Elementary   | 22.0         | 19.1        | 17.0        | -            |
| 00603005      | Marysville Elementary        | 19.0         | 18.8        | -           | -            |
| 00606017      | McKim Middle School          | -            | -           | 26.5        | -            |
| 00618007      | Nicholson Elementary         | 21.0         | 20.8        | 26.4        | -            |
| 00603008      | Selkirk Secondary School     | -            | -           | -           | 23.6         |
| 00604007      | Windermere Elementary        | 19.0         | 22.9        | 22.5        | -            |

---

## Glossary

---

| Term  | Definition / Notes  |
|---|---|
| <b>English Language Learners (ELL)</b>                  | • A program offered to students whose primary language(s) is/are other than English, and who may require additional services.   |
| <b>Grade</b>  | • The assigned grade of a student on October 31.  |
| <b>K</b>  | • Kindergarten  |
| <b>Number of Students</b>                               | • Student population is calculated by headcount.  |
| <b>Student</b>  | • A person enrolled in a BC school. Student populations are calculated by headcount. Students include all adult and school-aged persons who are working toward a certificate of graduation. |
| <b>Student Entitled to an Individual Education Plan</b> | • A student for whom an Individual Education Plan (IEP) must be designed under the Individual Education Plan order, Ministerial Order 638/95.   |