

# Overview of Class Size and Composition in British Columbia Public Schools 2013/14

## School District 040 New Westminster

These class size data are current as of October 15, 2013 and have been verified by school districts.

---

### **PLEASE NOTE**

The Ministry makes small and continuous improvements to the quality of its data. Sometimes these changes result in differences from previously published reports. The data in this report are the most accurate data available at time of publication.

Ministry reports are available at <http://www.bced.gov.bc.ca/reporting/>

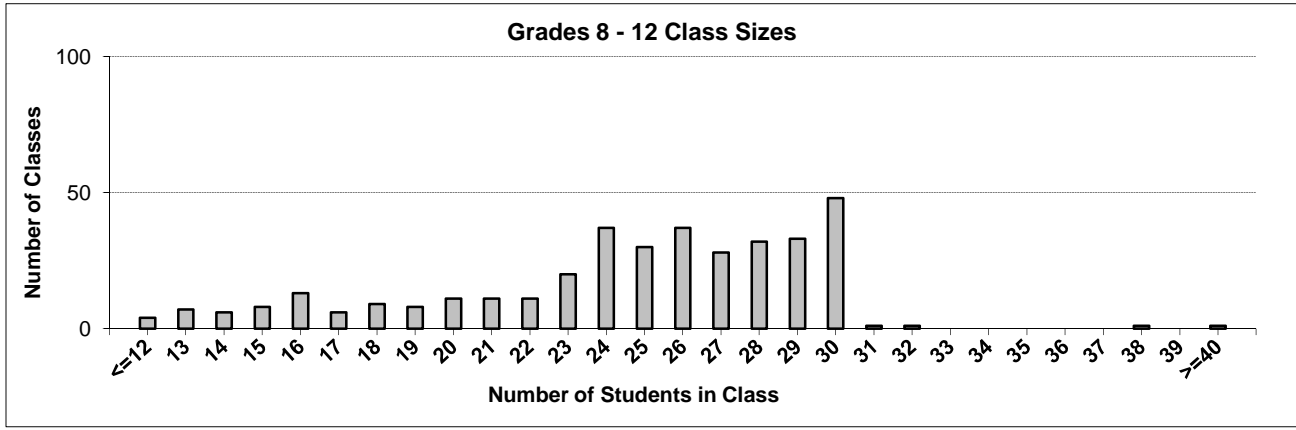
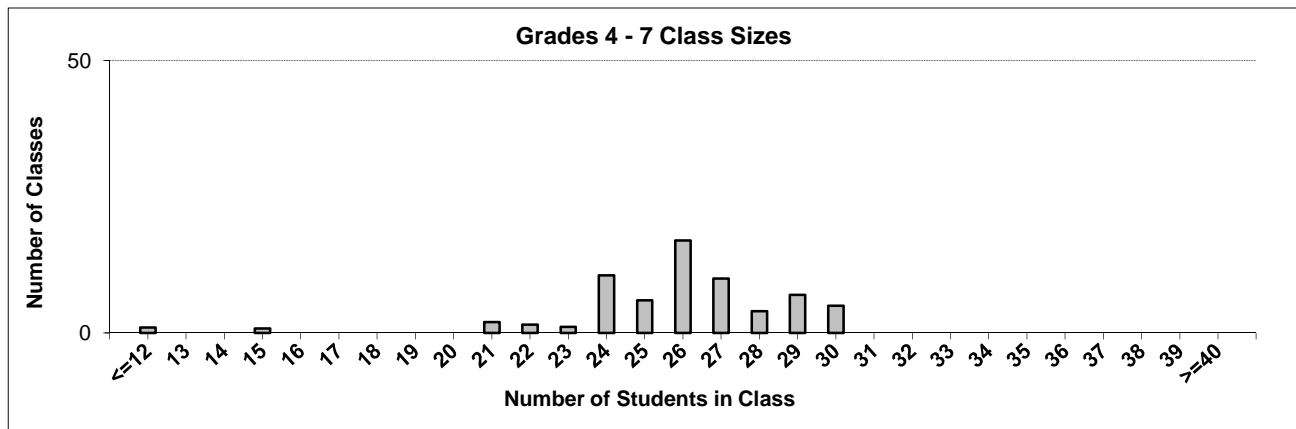
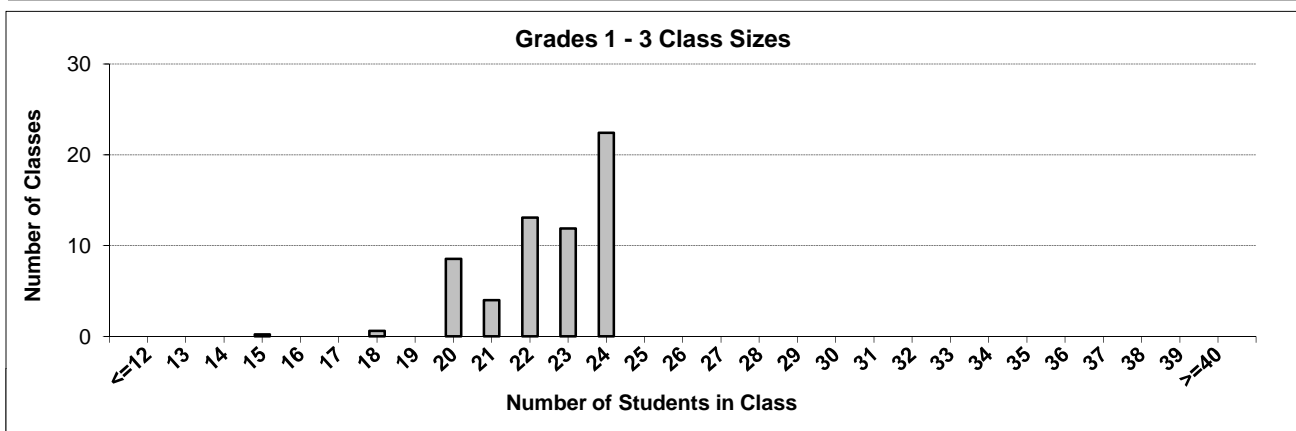
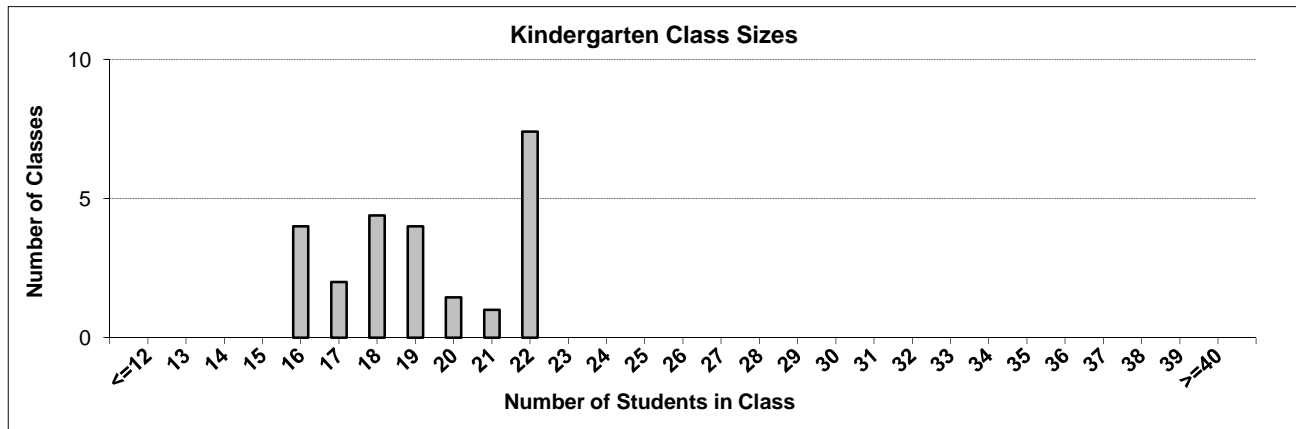
Contact the Business Intelligence Unit at [educ.reportingunit@gov.bc.ca](mailto:educ.reportingunit@gov.bc.ca)

---

# District Class Sizes

## 040 New Westminster

Source: Class size data collection (as of October 15) from BC public schools.



---

## District - Average Class Size

---

### 040 New Westminster

Source: Class size data collection (as of October 15) from BC public schools.

District - Average Class Size	Kindergarten	Grade 1 - 3	Grade 4 - 7	Grade 8 - 12
	19.2	22.5	25.8	24.5

Province - Average Class Size	Kindergarten	Grade 1 - 3	Grade 4 - 7	Grade 8 - 12
	19.3	21.5	25.7	23.0

Number of Reported Classes with Assigned Education Assistants	146
---	-----

Number of Reported Schools in District	12
--	----

Number of Reported Classes in District	514
--	-----

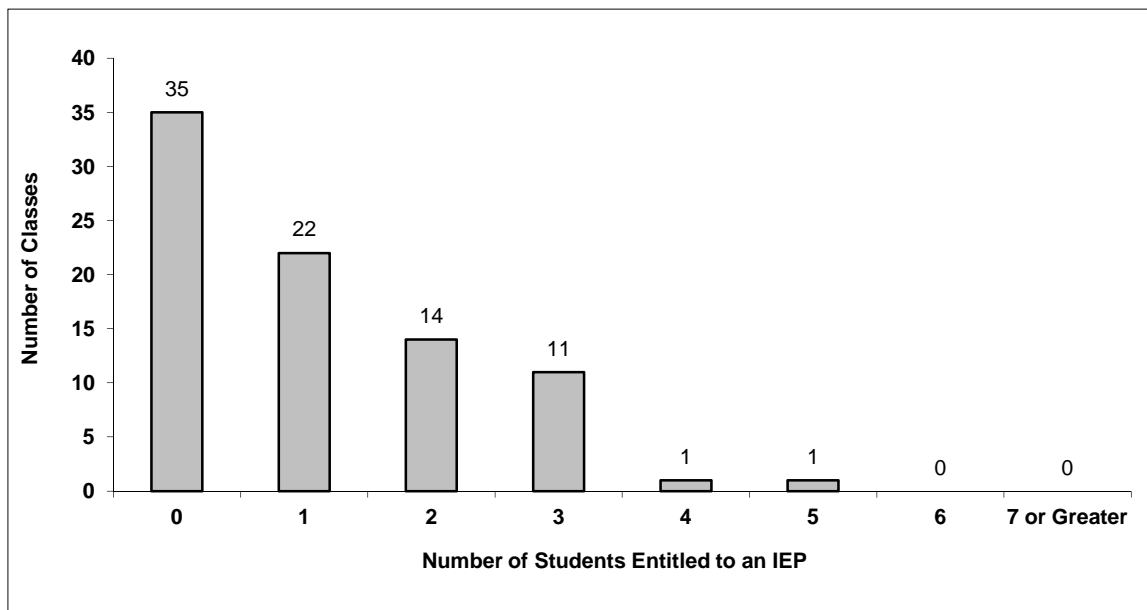
Number of Reported Classes in District with more than 30 Students	4
---	---

## District - Students Entitled to an Individual Education Plan (IEP)

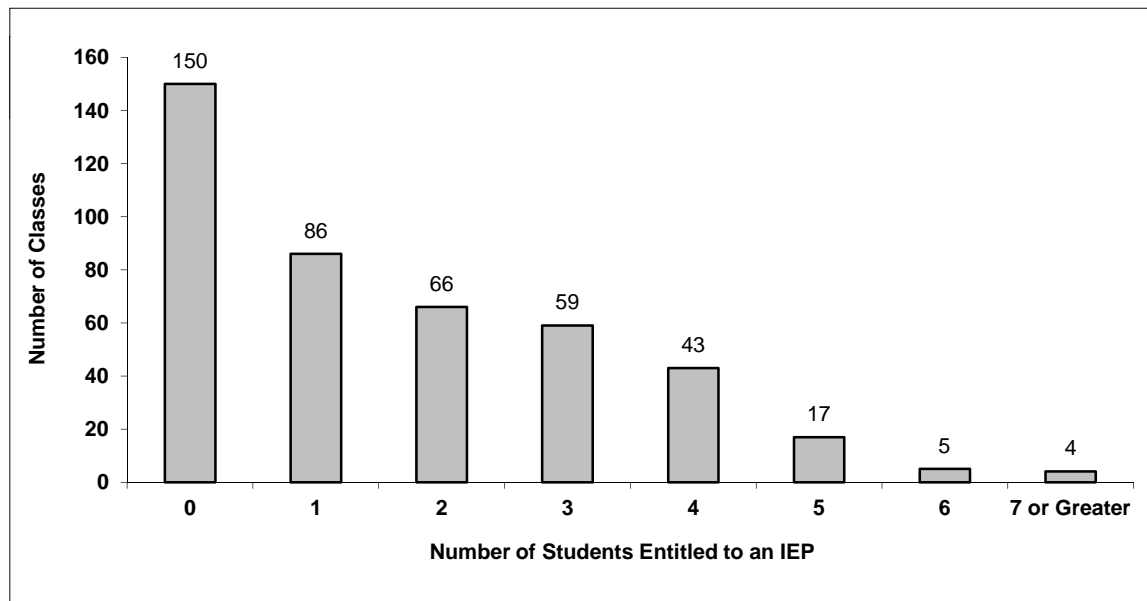
### 040 New Westminster

Source: Class size data collection (as of October 15) from BC public schools.

Grades K-3 - Number of Classes in District with 'X' Number of Students Entitled to an IEP



Grades 4-12 - Number of Classes in District with 'X' Number of Students Entitled to an IEP

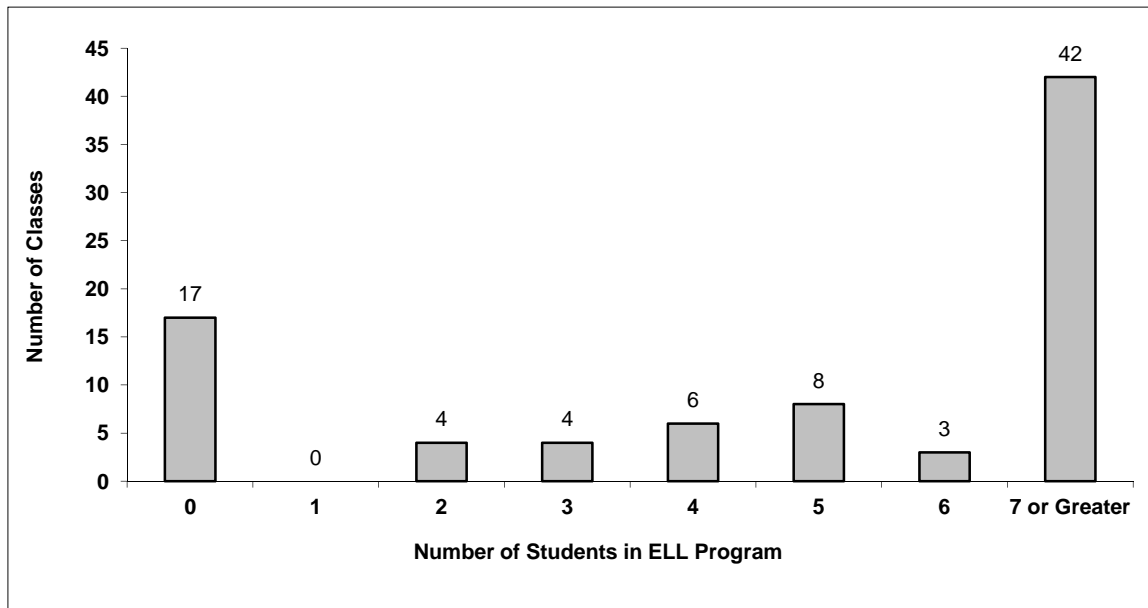


# District - English Language Learners (ELL)

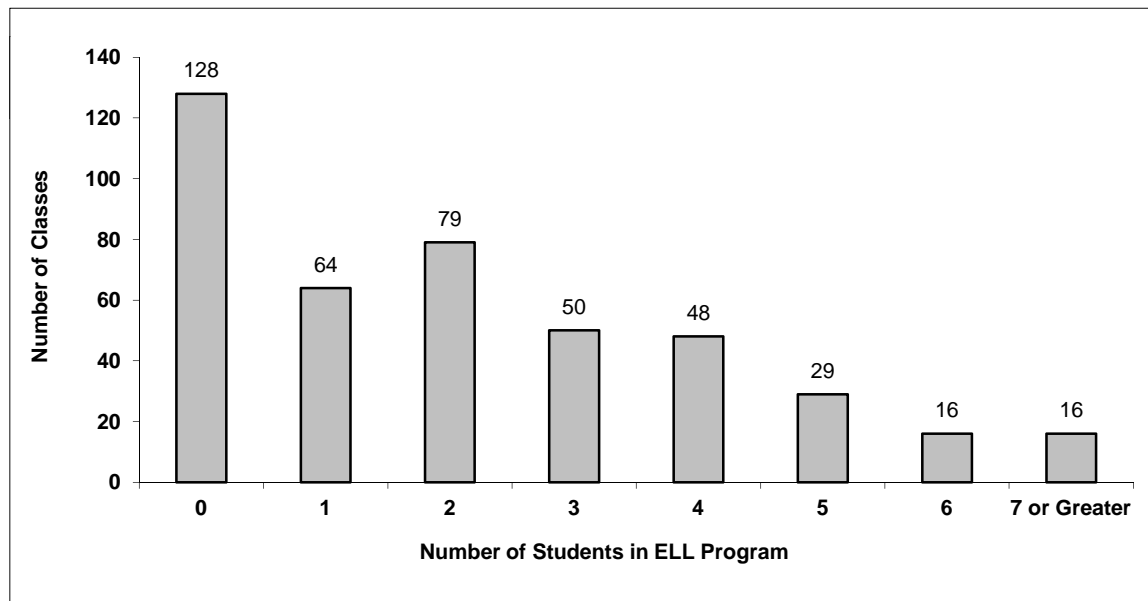
## 040 New Westminster

Source: Class size data collection (as of October 15) from BC public schools.

Grades K-3 - Number of Classes in District with 'X' Number of ELL



Grades 4-12 - Number of Classes in District with 'X' Number of ELL



## 040 New Westminster - Average Class Size by School

Source: Class size data collection (as of October 15) from BC public schools.

Ministry Code	School Name	Kindergarten	Grade 1 - 3	Grade 4 - 7	Grade 8 - 12
04040010	Connaught Heights Elementary	21.7	22.2	27.0	-
04040013	Ecole Glenbrook Middle School	-	-	26.5	26.3
04040009	F W Howay Elementary	22.0	23.1	15.5	-
04040002	Herbert Spencer Elementary	19.0	23.1	25.2	-
04040011	Hume Park School	18.0	17.3	15.0	-
04040007	John Robson Elementary	18.8	22.6	25.9	-
04040001	Lord Kelvin Elementary	16.0	21.1	26.9	-
04040004	Lord Tweedsmuir Elementary	21.7	23.0	26.2	-
04040008	New Westminster Secondary	-	-	-	24.5
04040012	Queen Elizabeth Elementary	18.3	22.3	25.2	-
04040014	Queensborough Middle School	-	-	26.1	27.5
04040003	Richard McBride Elementary	20.0	22.9	26.6	-

---

## Glossary

---

Term	Definition / Notes
English Language Learners (ELL)	<ul style="list-style-type: none"><li>• A program offered to students whose primary language(s) is/are other than English, and who may require additional services.</li></ul>
Grade	<ul style="list-style-type: none"><li>• The assigned grade of a student on October 15.</li></ul>
K	<ul style="list-style-type: none"><li>• Kindergarten</li></ul>
Number of Students	<ul style="list-style-type: none"><li>• Student population is calculated by headcount.</li></ul>
Student	<ul style="list-style-type: none"><li>• A person enrolled in a BC school. Student populations are calculated by headcount. Students include all adult and school-aged persons who are working toward a certificate of graduation.</li></ul>
Student Entitled to an Individual Education Plan	<ul style="list-style-type: none"><li>• A student for whom an Individual Education Plan (IEP) must be designed under the Individual Education Plan order, Ministerial Order 638/95.</li></ul>