

# Overview of Class Size and Composition in British Columbia Public Schools 2012/13

## School District 074 Gold Trail

These class size data are current as of October 15, 2012 and have been verified by school districts.

---

### **PLEASE NOTE**

The Ministry makes small and continuous improvements to the quality of its data. Sometimes these changes result in differences from previously published reports. The data in this report are the most accurate data available at time of publication.

Ministry reports are available at <http://www.bced.gov.bc.ca/reporting/>

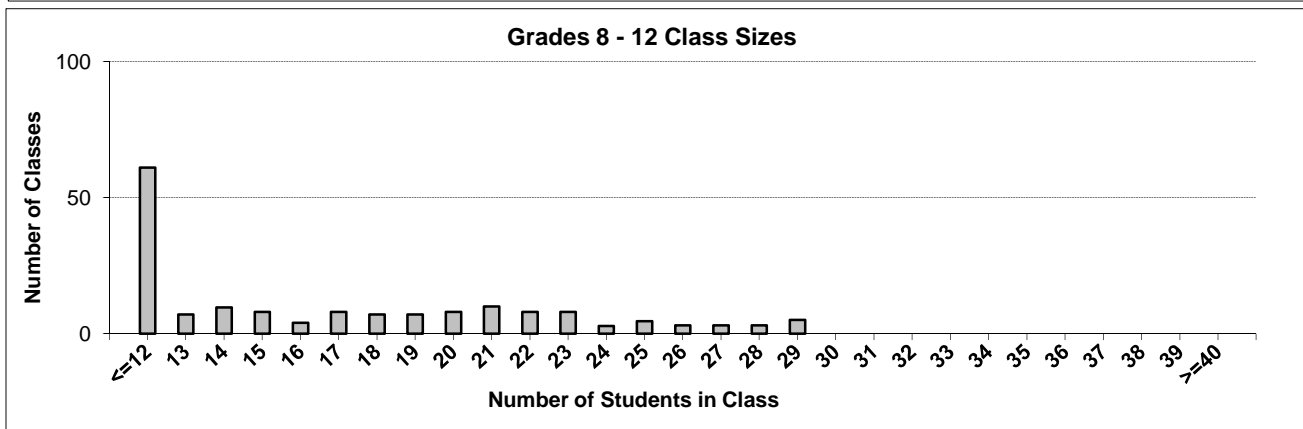
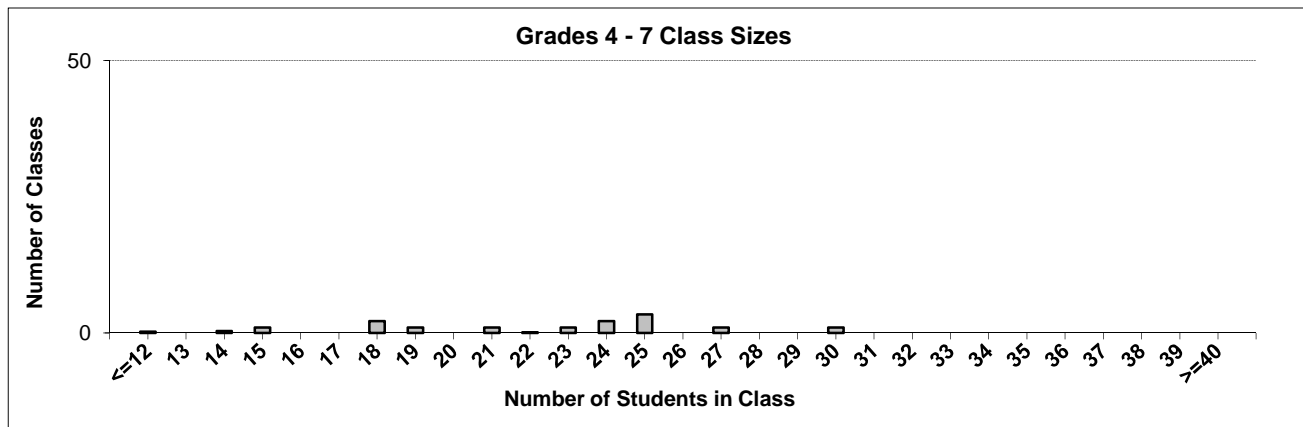
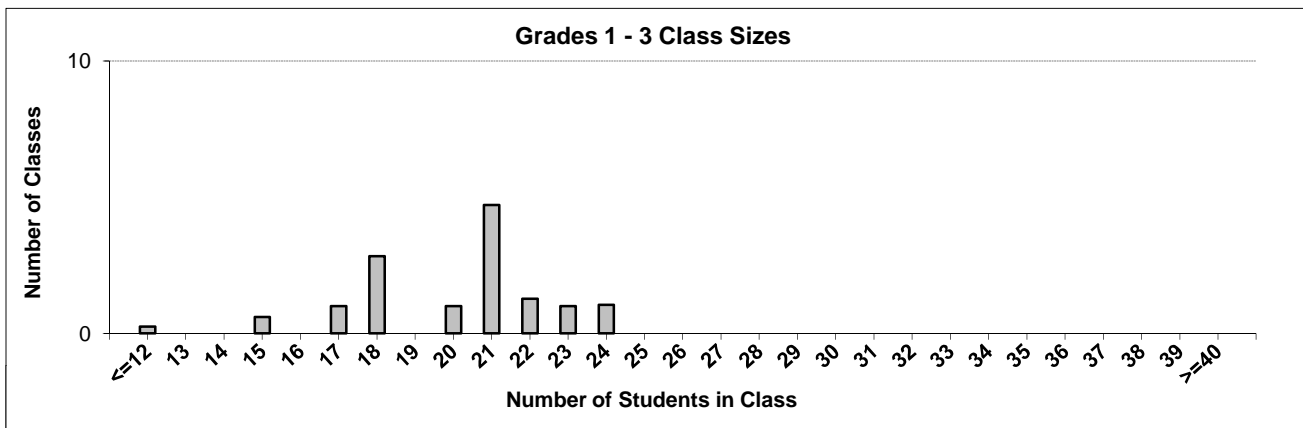
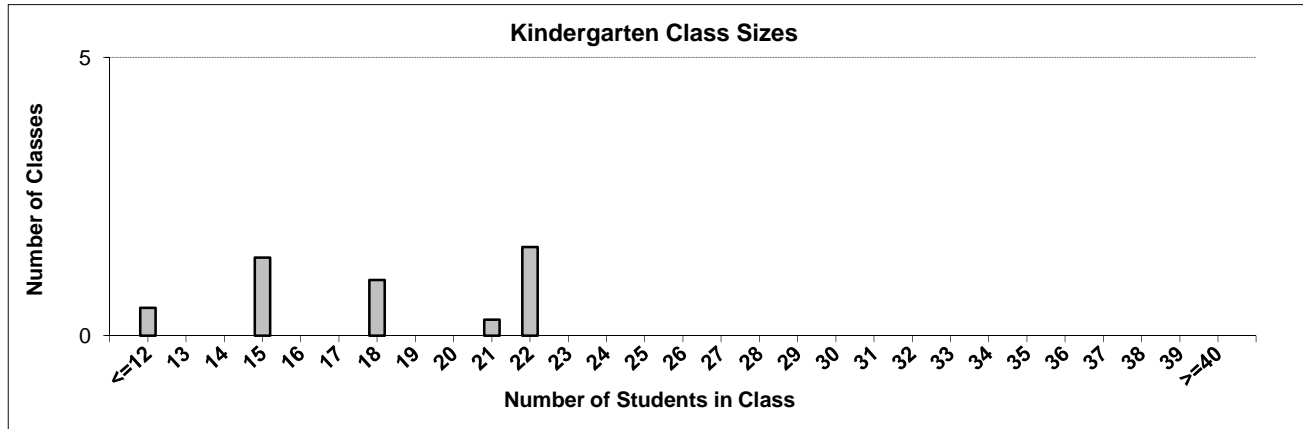
Contact the Business Intelligence Unit at [educ.reportingunit@gov.bc.ca](mailto:educ.reportingunit@gov.bc.ca)

---

# District Class Sizes

## 074 Gold Trail

Source: Class size data collection (as of October 15) from standard BC public schools.



---

## District - Average Class Size

---

### 074 Gold Trail

Source: Class size data collection (as of October 15) from standard BC public schools.

District - Average Class Size	Kindergarten	Grade 1 - 3	Grade 4 - 7	Grade 8 - 12
	17.2	19.9	22.1	15.5

Province - Average Class Size	Kindergarten	Grade 1 - 3	Grade 4 - 7	Grade 8 - 12
	19.0	21.1	25.4	23.3

Number of Reported Classes with Assigned Education Assistants	99
---	----

Number of Reported Schools in District	11
--	----

Number of Reported Classes in District	200
--	-----

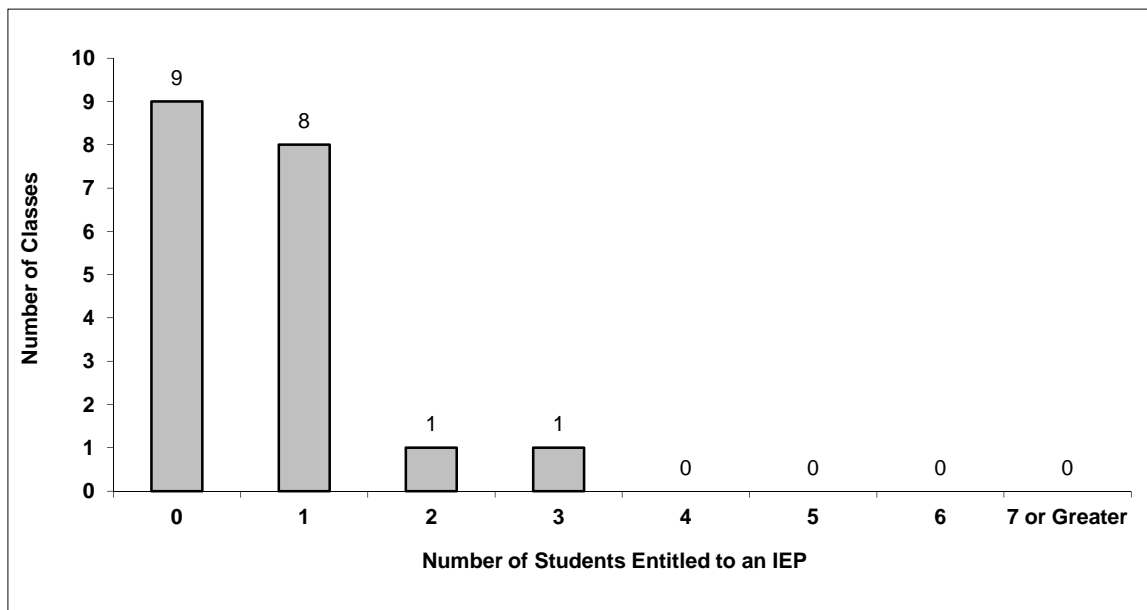
Number of Reported Classes in District with more than 30 Students	0
---	---

## District - Students Entitled to an Individual Education Plan (IEP)

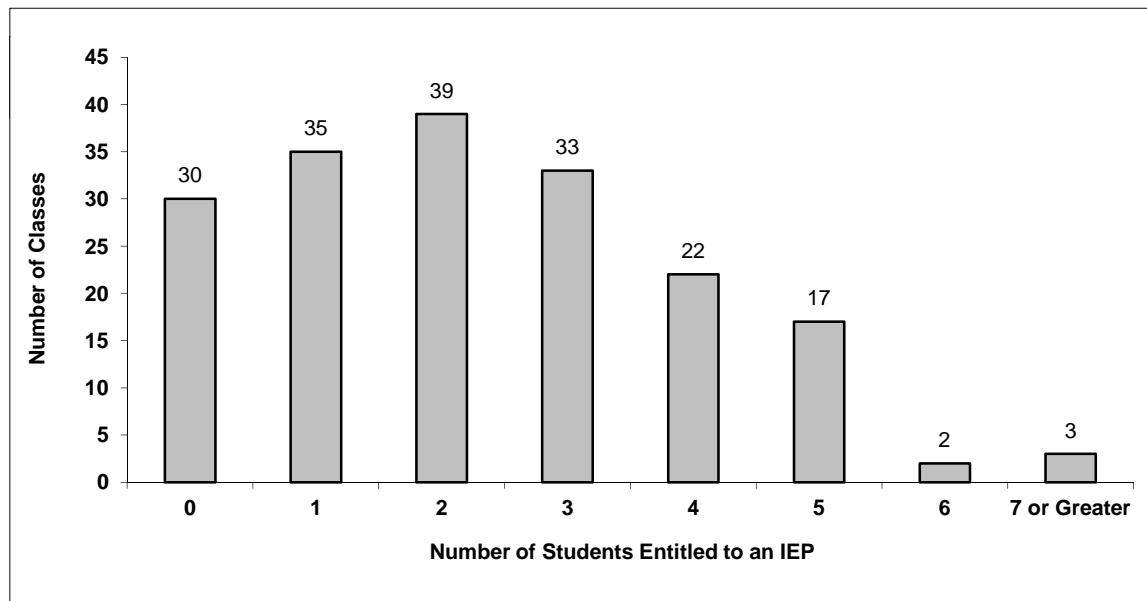
### 074 Gold Trail

Source: Class size data collection (as of October 15) from standard BC public schools.

Grades K-3 - Number of Classes in District with 'X' Number of Students Entitled to an IEP



Grades 4-12 - Number of Classes in District with 'X' Number of Students Entitled to an IEP

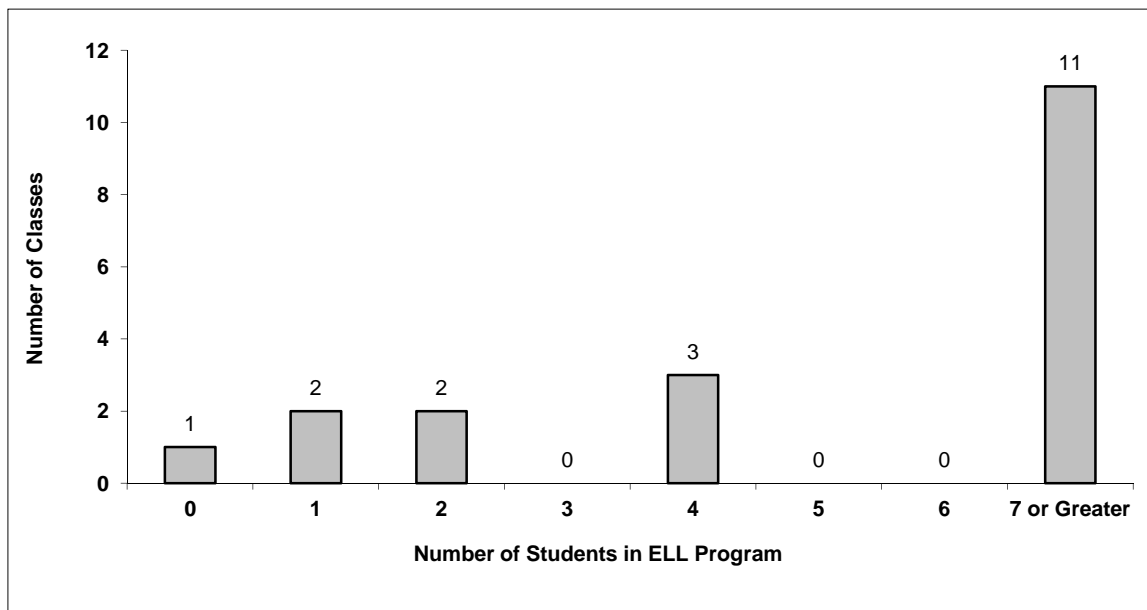


## District - English Language Learners (ELL)

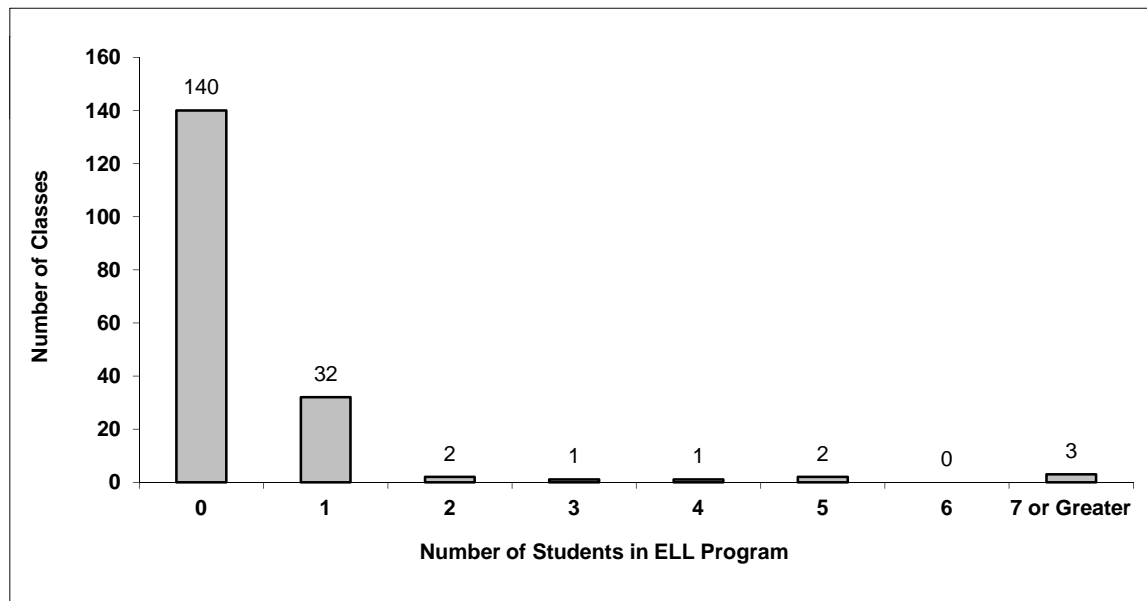
### 074 Gold Trail

Source: Class size data collection (as of October 15) from standard BC public schools.

Grades K-3 - Number of Classes in District with 'X' Number of ELL



Grades 4-12 - Number of Classes in District with 'X' Number of ELL



## 074 Gold Trail - Average Class Size by School

Source: Class size data collection (as of October 15) from standard BC public schools.

Ministry Code	School Name	Kindergarten	Grade 1 - 3	Grade 4 - 7	Grade 8 - 12
07430004	Ashcroft Elementary	18.0	20.0	24.0	-
07430016	Ashcroft Secondary	-	-	-	16.2
07430009	Cache Creek Elementary	15.0	17.3	16.6	-
07429012	Cayoosh Elementary	21.9	21.7	26.5	-
07474018	David Stoddart	21.0	21.0	19.3	13.0
07429014	George M Murray Elementary	15.0	19.9	24.3	-
07429007	Gold Bridge Community	4.0	4.0	4.0	-
07430010	Kumsheen Elem-Secondary	-	-	-	12.1
07429015	Lilloet Secondary	-	-	-	17.2
07430007	Lytton Elementary	22.0	22.7	20.0	-
07474006	Sk'il' Mountain Community School	-	-	-	13.7

---

## Glossary

---

Term	Definition / Notes
English Language Learners (ELL)	<ul style="list-style-type: none"><li>• A program offered to students whose primary language(s) is/are other than English, and who may require additional services.</li></ul>
Grade	<ul style="list-style-type: none"><li>• The assigned grade of a student on October 15.</li></ul>
K	<ul style="list-style-type: none"><li>• Kindergarten</li></ul>
Number of Students	<ul style="list-style-type: none"><li>• Student population is calculated by headcount.</li></ul>
Student	<ul style="list-style-type: none"><li>• A person enrolled in a BC school. Student populations are calculated by headcount. Students include all adult and school-aged persons who are working toward a certificate of graduation.</li></ul>
Student Entitled to an Individual Education Plan	<ul style="list-style-type: none"><li>• A student for whom an Individual Education Plan (IEP) must be designed under the Individual Education Plan order, Ministerial Order 638/95.</li></ul>