

Overview of Class Size and Composition in British Columbia Public Schools 2012/13

School District 070 Alberni

These class size data are current as of October 15, 2012 and have been verified by school districts.

PLEASE NOTE

The Ministry makes small and continuous improvements to the quality of its data. Sometimes these changes result in differences from previously published reports. The data in this report are the most accurate data available at time of publication.

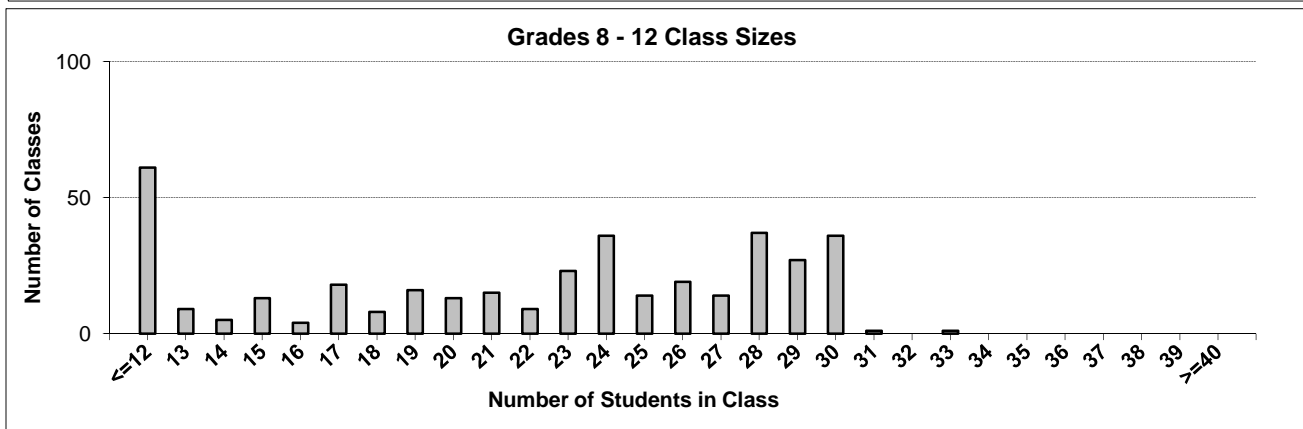
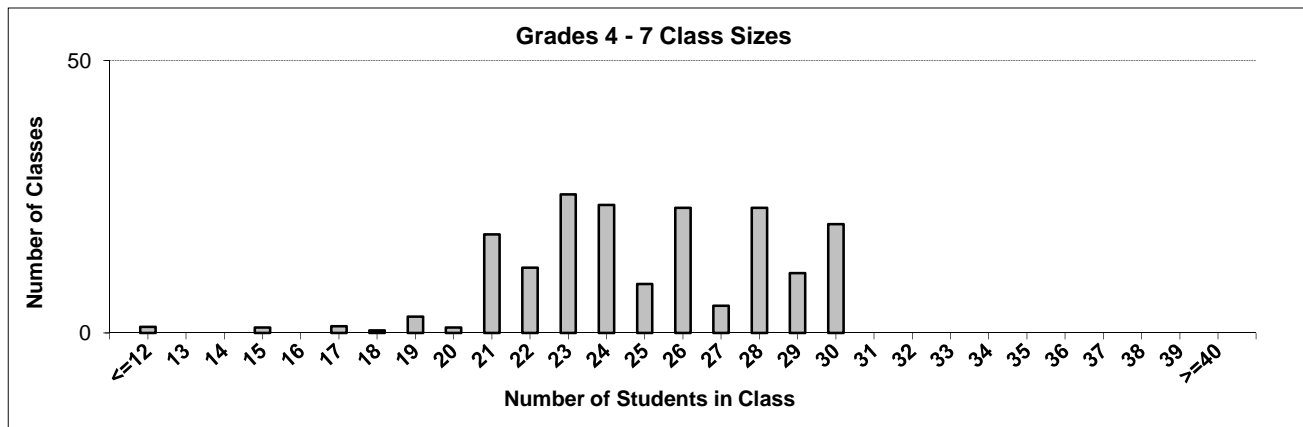
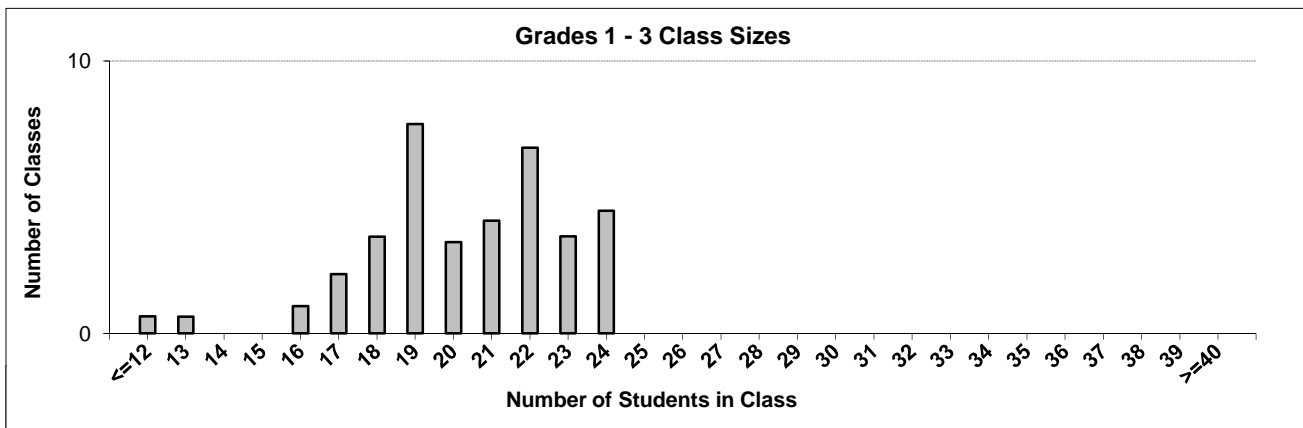
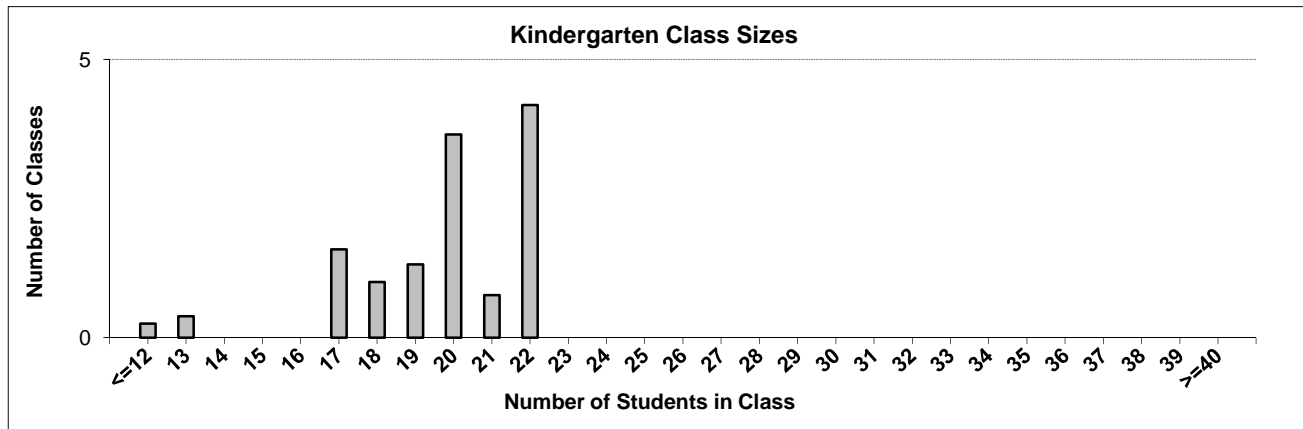
Ministry reports are available at <http://www.bced.gov.bc.ca/reporting/>

Contact the Business Intelligence Unit at educ.reportingunit@gov.bc.ca

District Class Sizes

070 Alberni

Source: Class size data collection (as of October 15) from standard BC public schools.



District - Average Class Size

070 Alberni

Source: Class size data collection (as of October 15) from standard BC public schools.

District - Average Class Size	Kindergarten	Grade 1 - 3	Grade 4 - 7	Grade 8 - 12
	19.6	20.2	25.0	20.7

Province - Average Class Size	Kindergarten	Grade 1 - 3	Grade 4 - 7	Grade 8 - 12
	19.0	21.1	25.4	23.3

Number of Reported Classes with Assigned Education Assistants	148
---	-----

Number of Reported Schools in District	13
--	----

Number of Reported Classes in District	608
--	-----

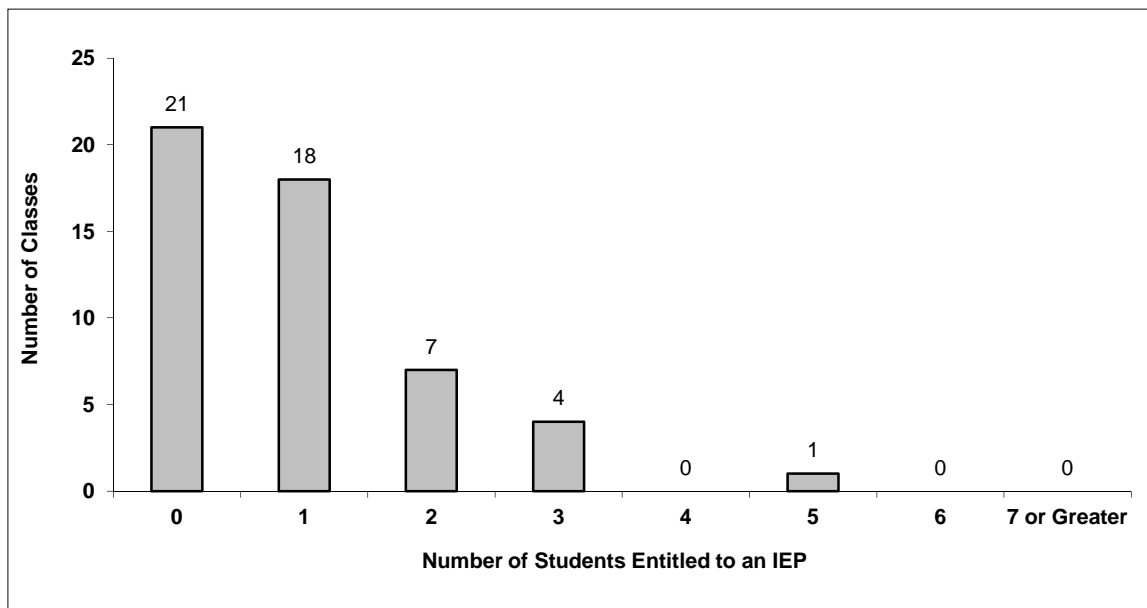
Number of Reported Classes in District with more than 30 Students	2
---	---

District - Students Entitled to an Individual Education Plan (IEP)

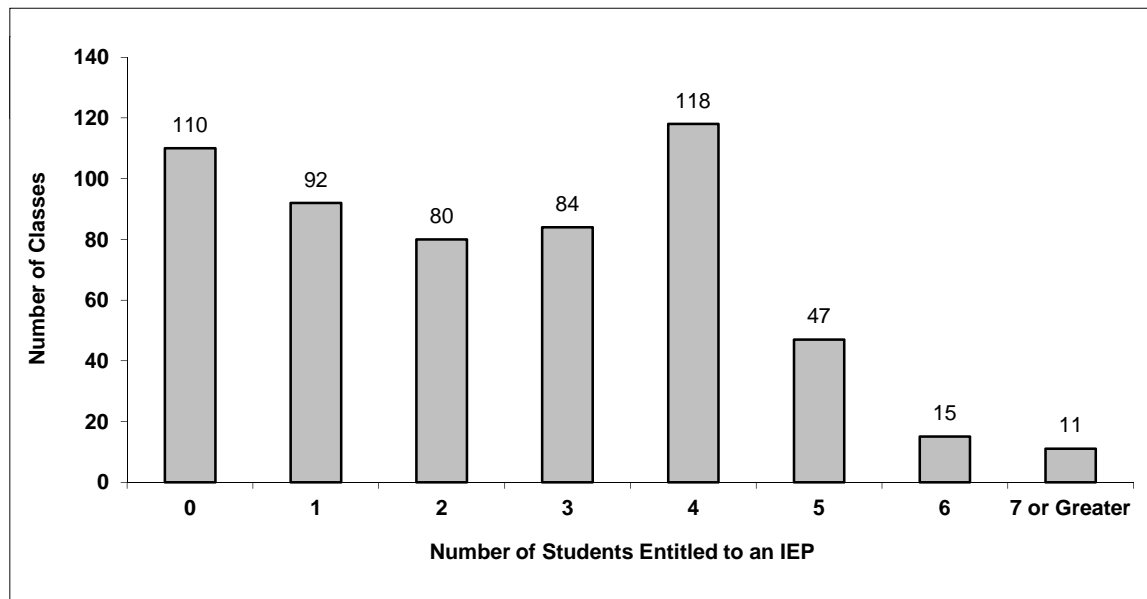
070 Alberni

Source: Class size data collection (as of October 15) from standard BC public schools.

Grades K-3 - Number of Classes in District with 'X' Number of Students Entitled to an IEP



Grades 4-12 - Number of Classes in District with 'X' Number of Students Entitled to an IEP

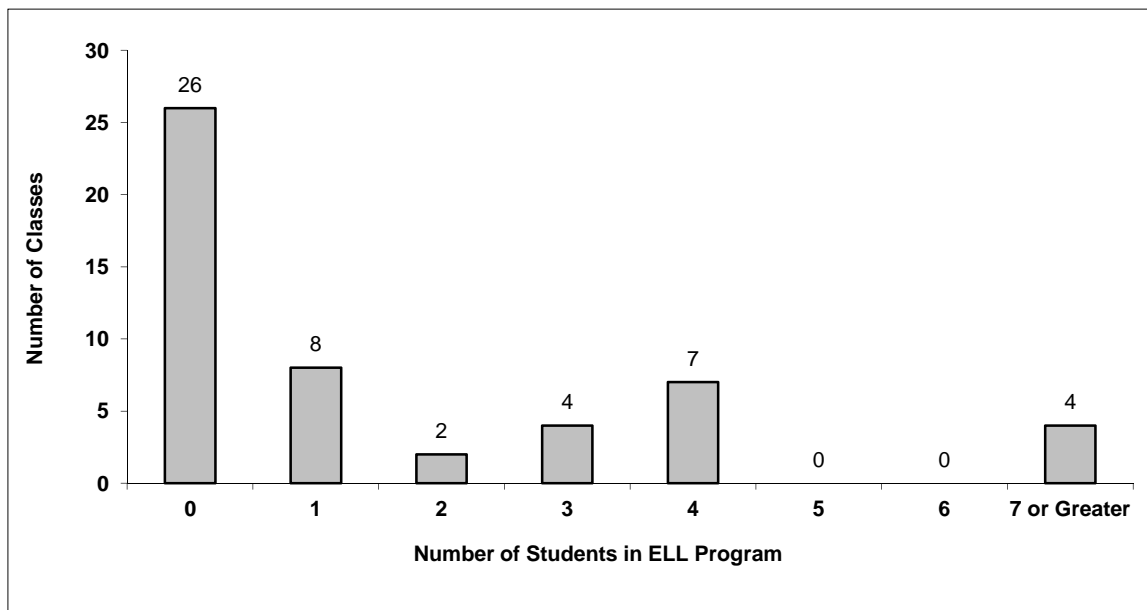


District - English Language Learners (ELL)

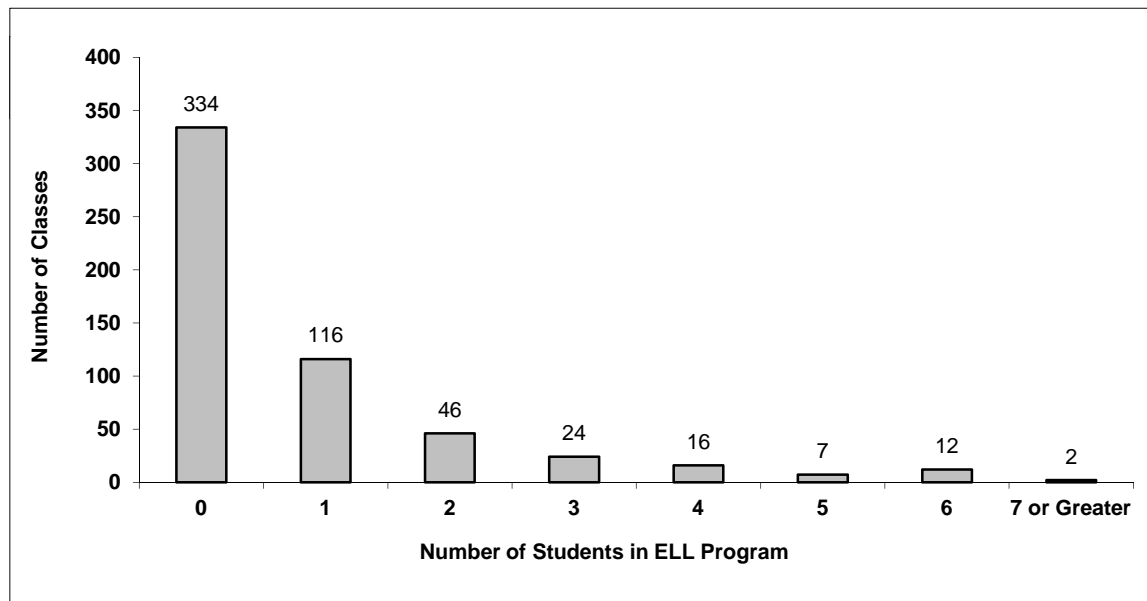
070 Alberni

Source: Class size data collection (as of October 15) from standard BC public schools.

Grades K-3 - Number of Classes in District with 'X' Number of ELL



Grades 4-12 - Number of Classes in District with 'X' Number of ELL



070 Alberni - Average Class Size by School

Source: Class size data collection (as of October 15) from standard BC public schools.

Ministry Code	School Name	Kindergarten	Grade 1 - 3	Grade 4 - 7	Grade 8 - 12
07070004	A W Neill Middle School	-	-	24.1	26.7
07070001	Alberni District Secondary	-	-	-	21.1
07070006	Alberni Elementary	18.8	21.5	27.4	-
07070027	Bamfield Community School	8.0	8.0	8.0	-
07070011	Eighth Avenue Elementary	22.0	20.2	25.1	-
07070002	Eric J Dunn Middle School	-	-	25.9	22.2
07070014	Gill Elementary	21.3	20.2	27.7	-
07070018	John Howitt Elementary	18.9	22.7	27.7	-
07070020	Maquinna Elementary	22.0	18.8	27.0	-
07070026	Ucluelet Elementary	20.0	21.8	23.6	-
07070005	Ucluelet Secondary	-	-	-	15.2
07070024	Wickaninnish Community School	20.3	22.1	26.4	-
07070025	Wood Elementary	16.6	17.0	18.8	-

Glossary

Term	Definition / Notes
English Language Learners (ELL)	<ul style="list-style-type: none">• A program offered to students whose primary language(s) is/are other than English, and who may require additional services.
Grade	<ul style="list-style-type: none">• The assigned grade of a student on October 15.
K	<ul style="list-style-type: none">• Kindergarten
Number of Students	<ul style="list-style-type: none">• Student population is calculated by headcount.
Student	<ul style="list-style-type: none">• A person enrolled in a BC school. Student populations are calculated by headcount. Students include all adult and school-aged persons who are working toward a certificate of graduation.
Student Entitled to an Individual Education Plan	<ul style="list-style-type: none">• A student for whom an Individual Education Plan (IEP) must be designed under the Individual Education Plan order, Ministerial Order 638/95.