

# Overview of Class Size and Composition in British Columbia Public Schools 2012/13

## School District 068 Nanaimo-Ladysmith

These class size data are current as of October 15, 2012 and have been verified by school districts.

---

### **PLEASE NOTE**

The Ministry makes small and continuous improvements to the quality of its data. Sometimes these changes result in differences from previously published reports. The data in this report are the most accurate data available at time of publication.

Ministry reports are available at <http://www.bced.gov.bc.ca/reporting/>

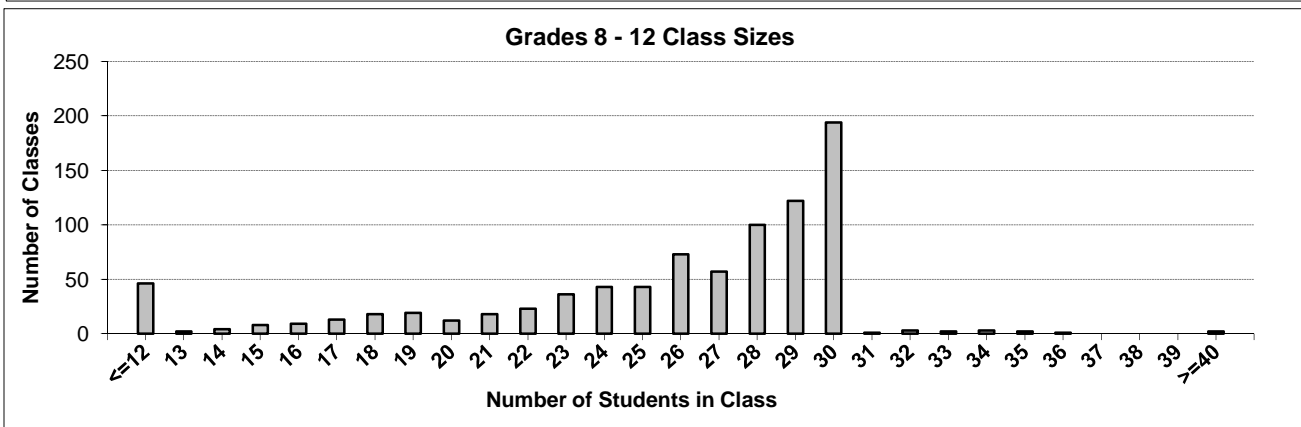
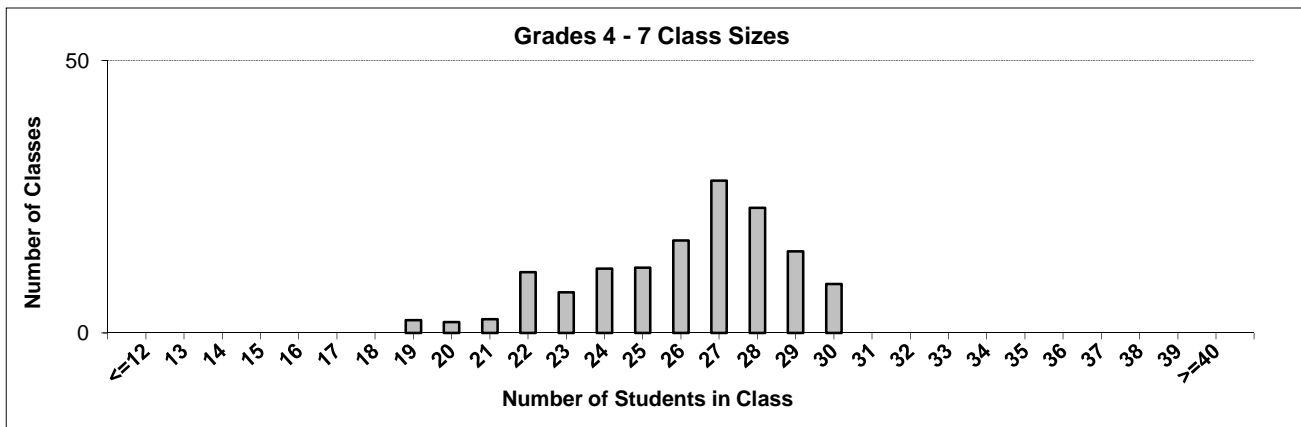
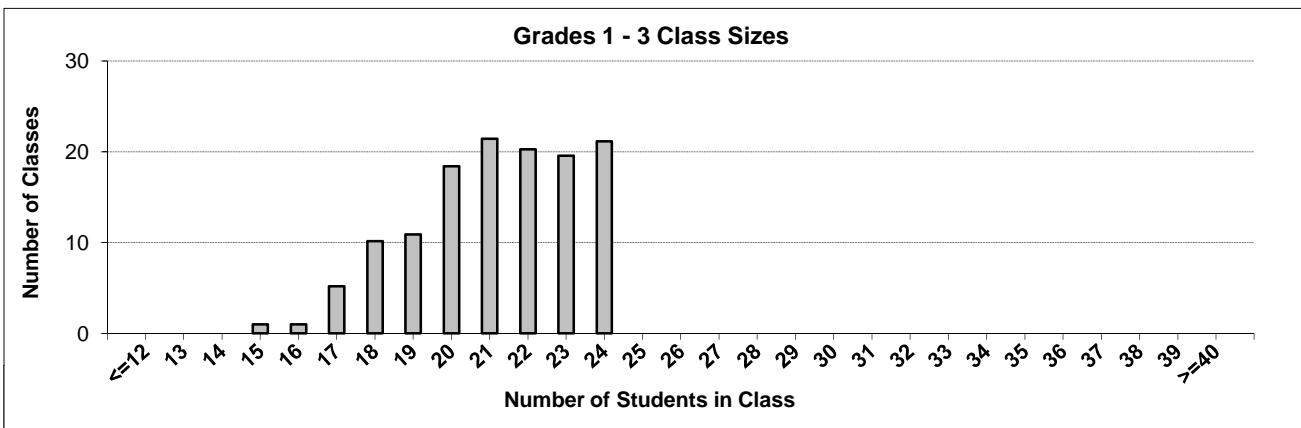
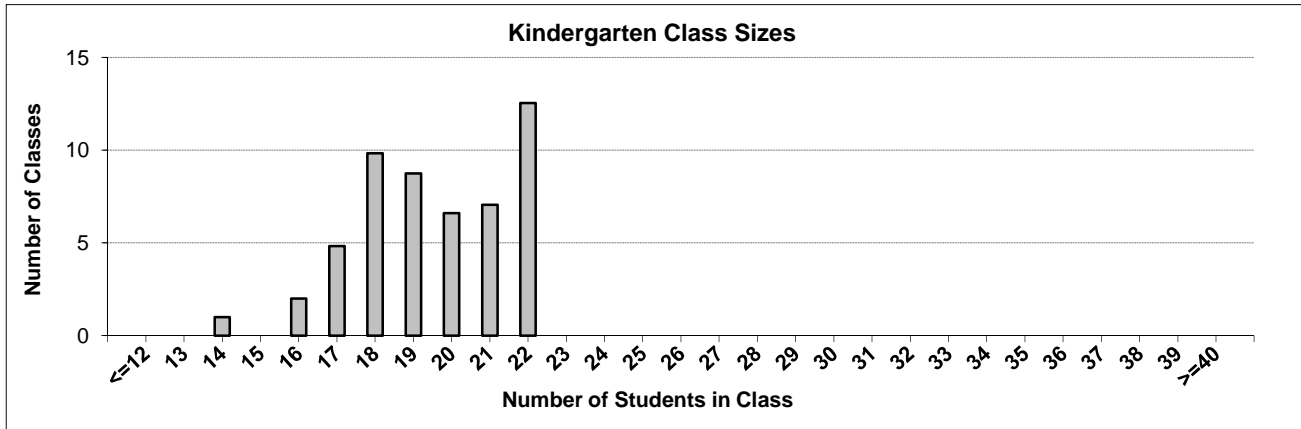
Contact the Business Intelligence Unit at [educ.reportingunit@gov.bc.ca](mailto:educ.reportingunit@gov.bc.ca)

---

# District Class Sizes

## 068 Nanaimo-Ladysmith

Source: Class size data collection (as of October 15) from standard BC public schools.



---

## District - Average Class Size

---

### 068 Nanaimo-Ladysmith

Source: Class size data collection (as of October 15) from standard BC public schools.

District - Average Class Size	Kindergarten	Grade 1 - 3	Grade 4 - 7	Grade 8 - 12
	19.5	21.2	26.1	25.5

Province - Average Class Size	Kindergarten	Grade 1 - 3	Grade 4 - 7	Grade 8 - 12
	19.0	21.1	25.4	23.3

Number of Reported Classes with Assigned Education Assistants	413
---	-----

Number of Reported Schools in District	38
--	----

Number of Reported Classes in District	1,177
--	-------

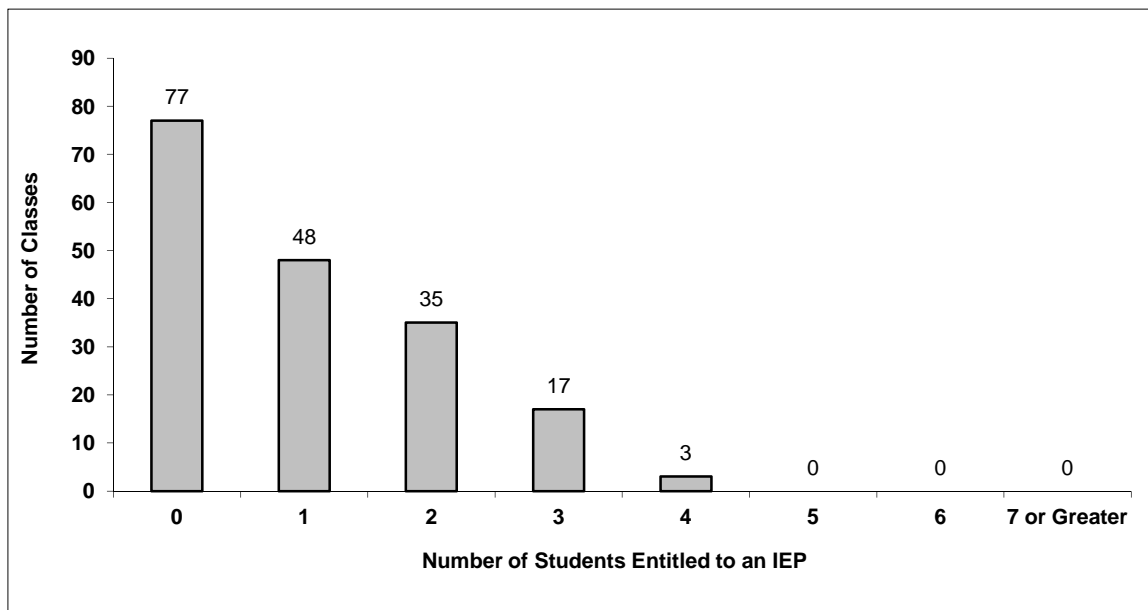
Number of Reported Classes in District with more than 30 Students	14
---	----

# District - Students Entitled to an Individual Education Plan (IEP)

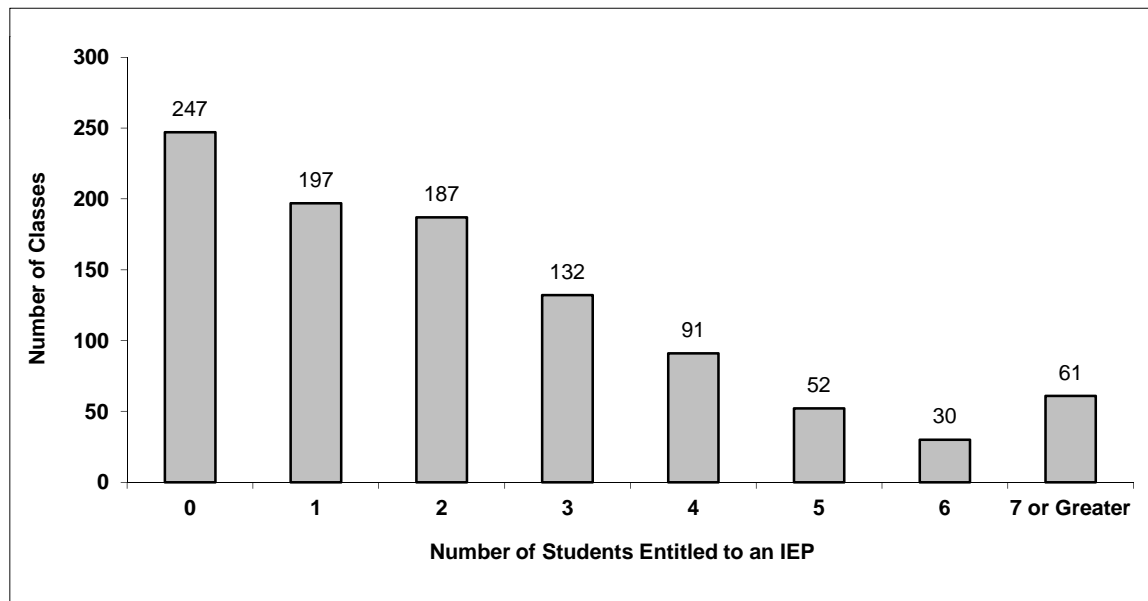
## 068 Nanaimo-Ladysmith

Source: Class size data collection (as of October 15) from standard BC public schools.

Grades K-3 - Number of Classes in District with 'X' Number of Students Entitled to an IEP



Grades 4-12 - Number of Classes in District with 'X' Number of Students Entitled to an IEP

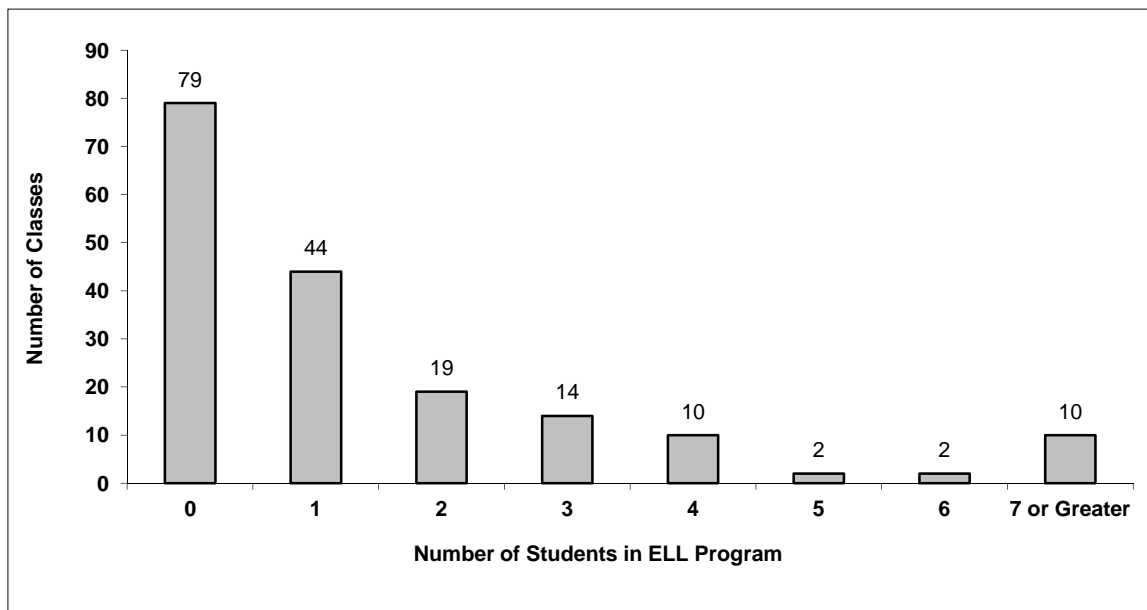


## District - English Language Learners (ELL)

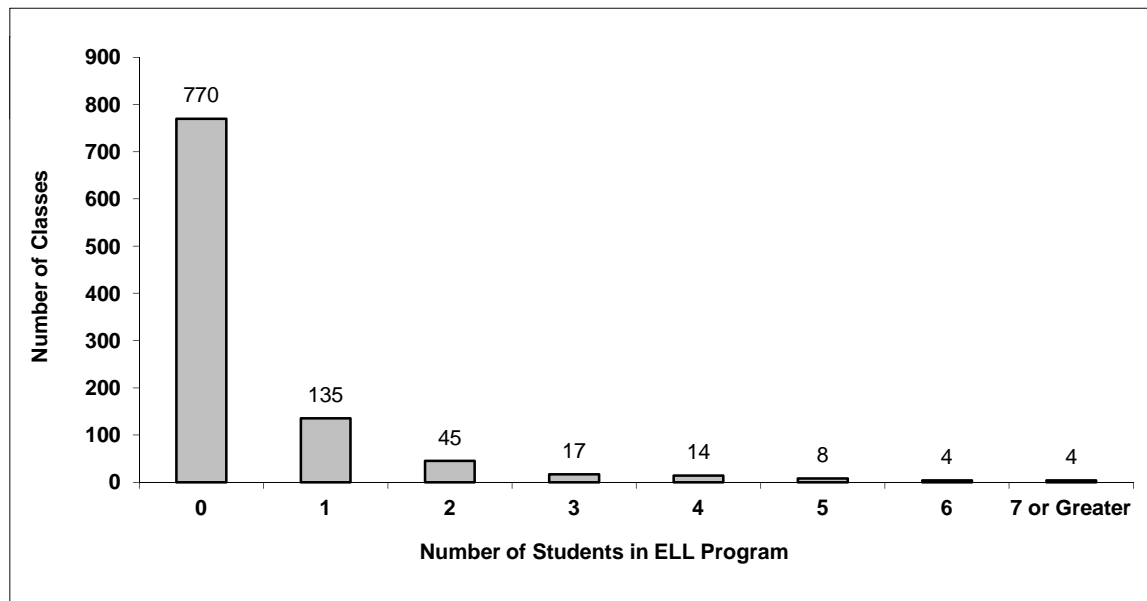
### 068 Nanaimo-Ladysmith

Source: Class size data collection (as of October 15) from standard BC public schools.

Grades K-3 - Number of Classes in District with 'X' Number of ELL



Grades 4-12 - Number of Classes in District with 'X' Number of ELL



## 068 Nanaimo-Ladysmith - Average Class Size by School

Source: Class size data collection (as of October 15) from standard BC public schools.

Ministry Code	School Name	Kindergarten	Grade 1 - 3	Grade 4 - 7	Grade 8 - 12
06868018	Bayview Elementary	17.0	18.3	20.4	-
06868019	Brechin Elementary	19.0	16.7	22.7	-
06868007	Cedar Community Secondary	-	-	-	26.2
06868022	Chase River Elementary	19.0	20.2	24.7	-
06868024	Cilaire Elementary	17.5	21.0	24.8	-
06868323	Cinnabar Valley Elementary	19.0	23.3	26.5	-
06868325	Coal Tye Elementary	19.5	20.8	25.9	-
06868027	Davis Road Elementary	20.6	21.2	25.8	-
06868028	Departure Bay Elementary	18.0	20.3	23.4	-
06868010	Dover Bay Secondary	-	-	-	26.3
06868036	Fairview Elementary	21.5	17.8	24.4	-
06868037	Forest Park Elementary	19.9	21.3	26.4	-
06868038	Frank J. Ney Elementary	19.5	22.0	27.8	-
06868040	Gabriola Elementary	20.0	21.2	23.4	-
06868041	Georgia Avenue Elementary	18.2	19.4	25.2	-
06868044	Hammond Bay Elementary	22.0	23.0	27.5	-
06868011	John Barsby Community School	-	-	-	24.7
06868048	Ladysmith Intermediate	-	-	27.4	-
06868049	Ladysmith Primary	21.5	21.8	-	-
06868002	Ladysmith Secondary	-	-	-	25.0
06868055	McGirr Elementary	20.0	21.7	28.0	-
06868052	Mountain View Elementary	22.0	21.5	27.2	-
06868001	Nanaimo District Secondary	-	-	-	24.9
06868009	North Cedar Intermediate	-	-	25.4	-
06868058	North Oyster Elementary	18.0	19.7	22.8	-
06868061	Park Avenue Elementary	18.0	22.3	26.6	-
06868065	Pauline Haarer Elementary	22.0	21.8	27.5	-
06868066	Pleasant Valley Elementary	19.5	18.8	26.0	-
06868071	Quarterway Elementary	21.7	22.6	26.8	-
06868073	Randerson Ridge Elementary	17.0	24.0	26.6	-
06868076	Rock City Elementary	22.0	22.4	26.6	-
06868077	Rutherford Elementary	21.0	21.7	28.1	-
06868080	Seaview Elementary	21.0	22.2	24.6	-
06868081	South Wellington Elementary	18.0	18.6	25.3	-
06868086	Uplands Park Elementary	17.0	21.6	28.3	-
06868015	Wellington Secondary	-	-	-	25.7
06868085	Woodbank Primary	15.0	20.7	-	-
06868013	Woodlands Secondary	-	-	-	25.2

---

## Glossary

---

Term	Definition / Notes
English Language Learners (ELL)	<ul style="list-style-type: none"><li>• A program offered to students whose primary language(s) is/are other than English, and who may require additional services.</li></ul>
Grade	<ul style="list-style-type: none"><li>• The assigned grade of a student on October 15.</li></ul>
K	<ul style="list-style-type: none"><li>• Kindergarten</li></ul>
Number of Students	<ul style="list-style-type: none"><li>• Student population is calculated by headcount.</li></ul>
Student	<ul style="list-style-type: none"><li>• A person enrolled in a BC school. Student populations are calculated by headcount. Students include all adult and school-aged persons who are working toward a certificate of graduation.</li></ul>
Student Entitled to an Individual Education Plan	<ul style="list-style-type: none"><li>• A student for whom an Individual Education Plan (IEP) must be designed under the Individual Education Plan order, Ministerial Order 638/95.</li></ul>