

Overview of Class Size and Composition in British Columbia Public Schools 2012/13

School District 067 Okanagan Skaha

These class size data are current as of October 15, 2012 and have been verified by school districts.

PLEASE NOTE

The Ministry makes small and continuous improvements to the quality of its data. Sometimes these changes result in differences from previously published reports. The data in this report are the most accurate data available at time of publication.

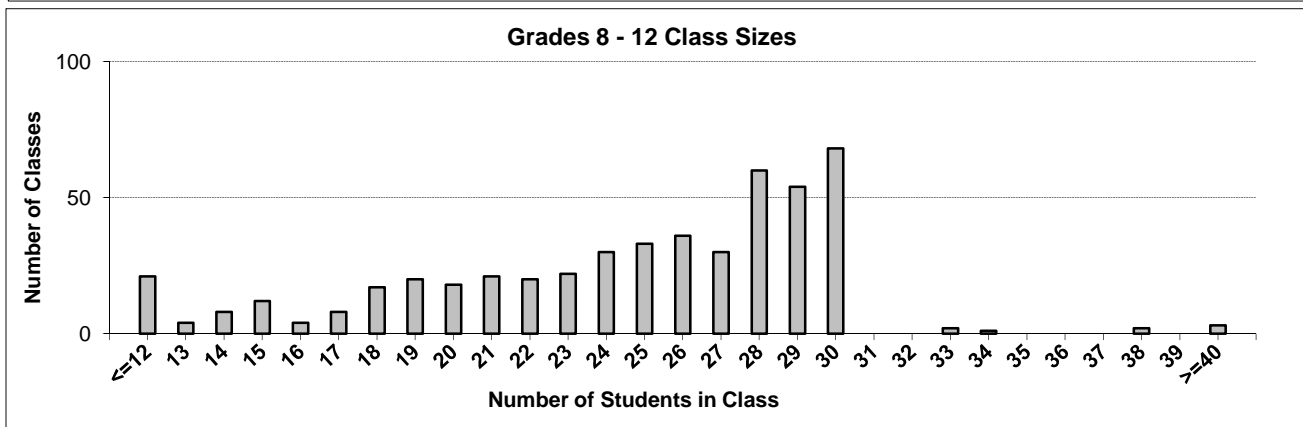
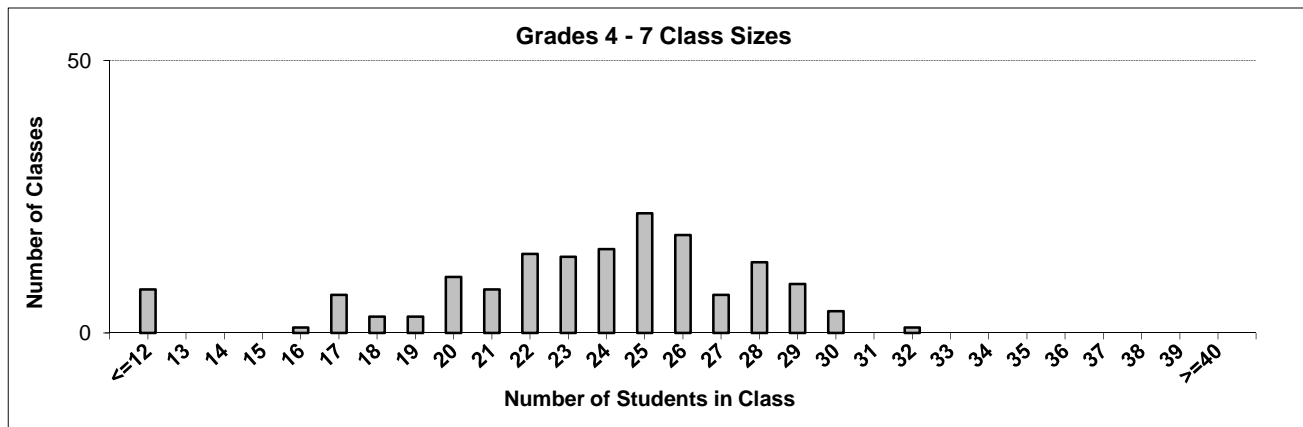
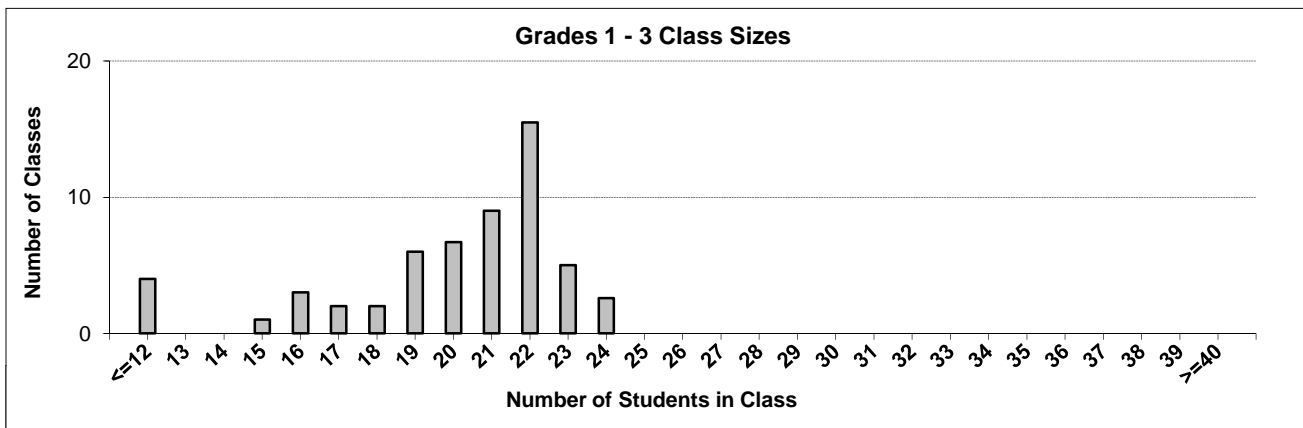
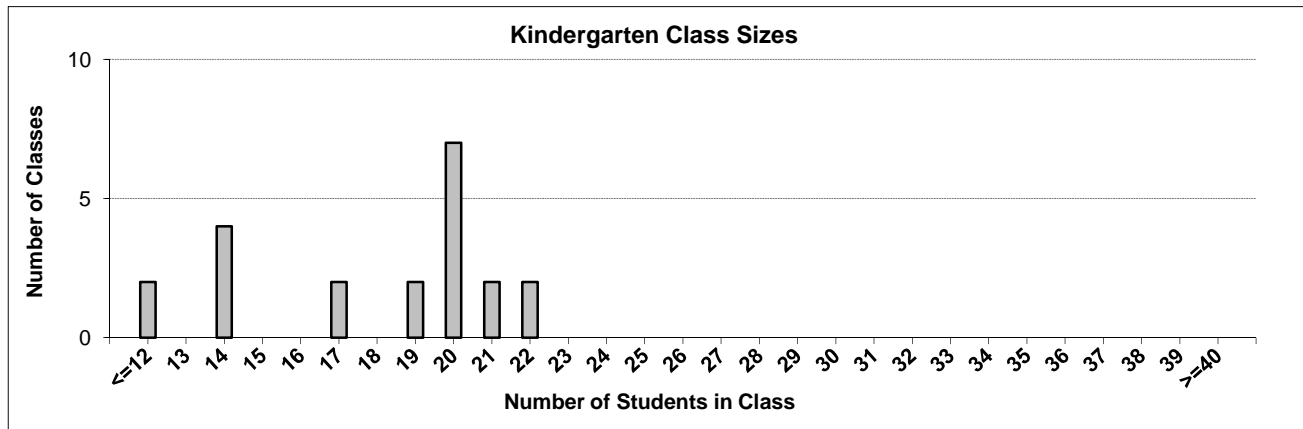
Ministry reports are available at <http://www.bced.gov.bc.ca/reporting/>

Contact the Business Intelligence Unit at educ.reportingunit@gov.bc.ca

District Class Sizes

067 Okanagan Skaha

Source: Class size data collection (as of October 15) from standard BC public schools.



District - Average Class Size

067 Okanagan Skaha

Source: Class size data collection (as of October 15) from standard BC public schools.

District - Average Class Size	Kindergarten	Grade 1 - 3	Grade 4 - 7	Grade 8 - 12
	17.5	19.5	23.1	24.4

Province - Average Class Size	Kindergarten	Grade 1 - 3	Grade 4 - 7	Grade 8 - 12
	19.0	21.1	25.4	23.3

Number of Reported Classes with Assigned Education Assistants	261
---	-----

Number of Reported Schools in District	18
--	----

Number of Reported Classes in District	730
--	-----

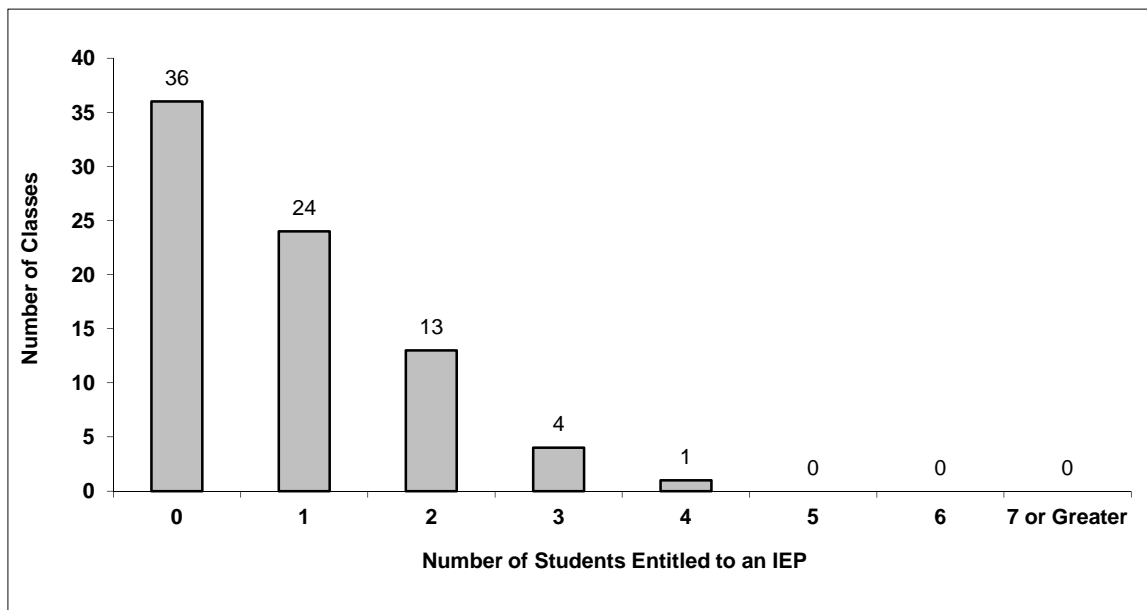
Number of Reported Classes in District with more than 30 Students	9
---	---

District - Students Entitled to an Individual Education Plan (IEP)

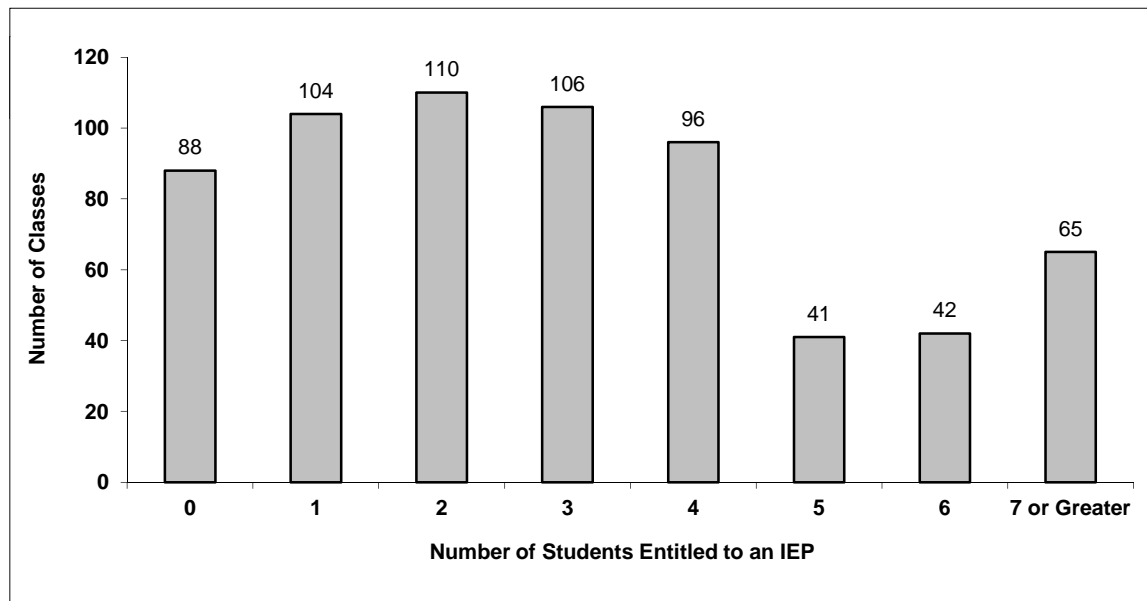
067 Okanagan Skaha

Source: Class size data collection (as of October 15) from standard BC public schools.

Grades K-3 - Number of Classes in District with 'X' Number of Students Entitled to an IEP



Grades 4-12 - Number of Classes in District with 'X' Number of Students Entitled to an IEP

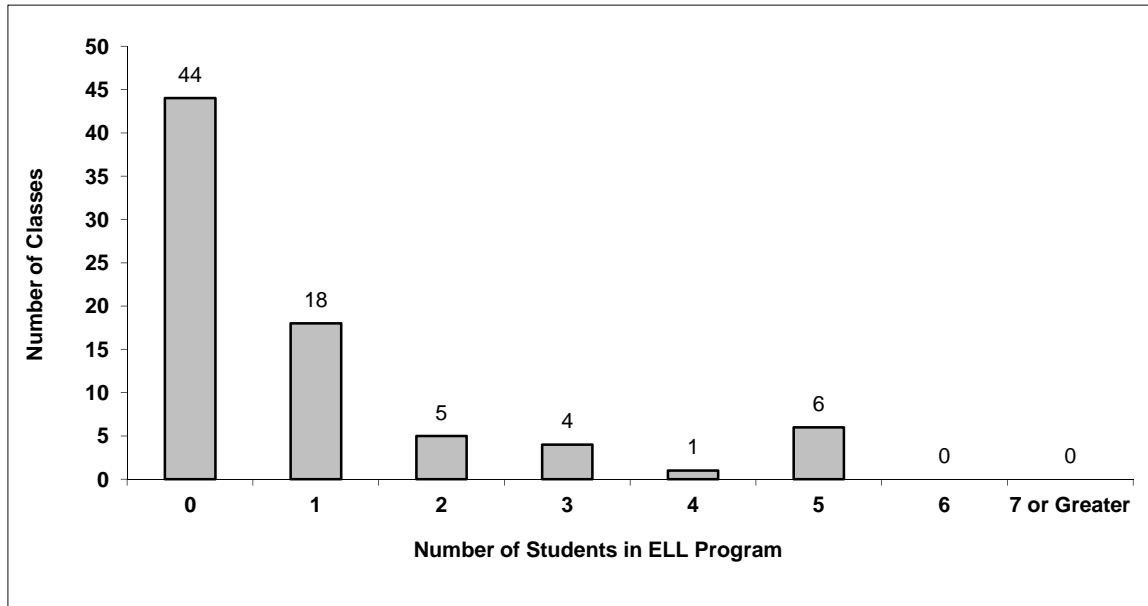


District - English Language Learners (ELL)

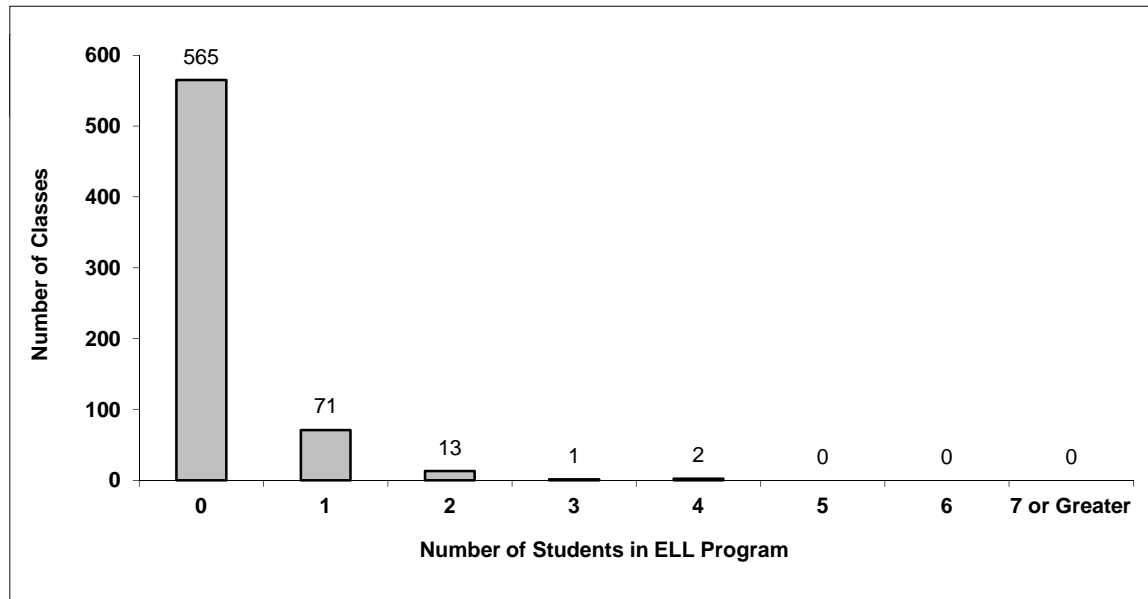
067 Okanagan Skaha

Source: Class size data collection (as of October 15) from standard BC public schools.

Grades K-3 - Number of Classes in District with 'X' Number of ELL



Grades 4-12 - Number of Classes in District with 'X' Number of ELL



067 Okanagan Skaha - Average Class Size by School

Source: Class size data collection (as of October 15) from standard BC public schools.

Ministry Code	School Name	Kindergarten	Grade 1 - 3	Grade 4 - 7	Grade 8 - 12
06715005	Carmi Elementary	17.0	21.6	24.3	-
06715014	Columbia Elementary	21.0	21.3	28.1	-
06777004	Giant's Head Elementary	19.7	22.1	27.3	-
06767019	KVR Middle School	-	-	20.8	23.3
06715004	Kaleden Elementary	14.0	21.1	20.3	-
06715010	McNicol Park Middle School	-	-	23.6	21.2
06715003	Naramata Elementary	9.0	21.5	23.0	-
06715017	Parkway Elementary	20.0	21.0	28.7	-
06715002	Penticton Secondary	-	-	-	25.3
06715008	Princess Margaret Secondary	-	-	-	24.4
06715006	Queens Park Elementary	14.0	18.4	24.7	-
06767020	Skaha Lake Middle School	-	-	22.8	25.3
06767021	Summerland Middle School	-	-	25.1	24.8
06777002	Summerland Secondary	-	-	-	22.5
06777003	Trout Creek Elementary	21.0	18.7	26.7	-
06715011	Uplands Elementary	20.0	20.7	26.3	-
06715007	West Bench Elementary	14.0	18.9	25.4	-
06715018	Wiltse Elementary	15.7	14.5	18.0	-

Glossary

Term	Definition / Notes
English Language Learners (ELL)	<ul style="list-style-type: none">• A program offered to students whose primary language(s) is/are other than English, and who may require additional services.
Grade	<ul style="list-style-type: none">• The assigned grade of a student on October 15.
K	<ul style="list-style-type: none">• Kindergarten
Number of Students	<ul style="list-style-type: none">• Student population is calculated by headcount.
Student	<ul style="list-style-type: none">• A person enrolled in a BC school. Student populations are calculated by headcount. Students include all adult and school-aged persons who are working toward a certificate of graduation.
Student Entitled to an Individual Education Plan	<ul style="list-style-type: none">• A student for whom an Individual Education Plan (IEP) must be designed under the Individual Education Plan order, Ministerial Order 638/95.