

Overview of Class Size and Composition in British Columbia Public Schools 2012/13

School District 048 Sea to Sky

These class size data are current as of October 15, 2012 and have been verified by school districts.

PLEASE NOTE

The Ministry makes small and continuous improvements to the quality of its data. Sometimes these changes result in differences from previously published reports. The data in this report are the most accurate data available at time of publication.

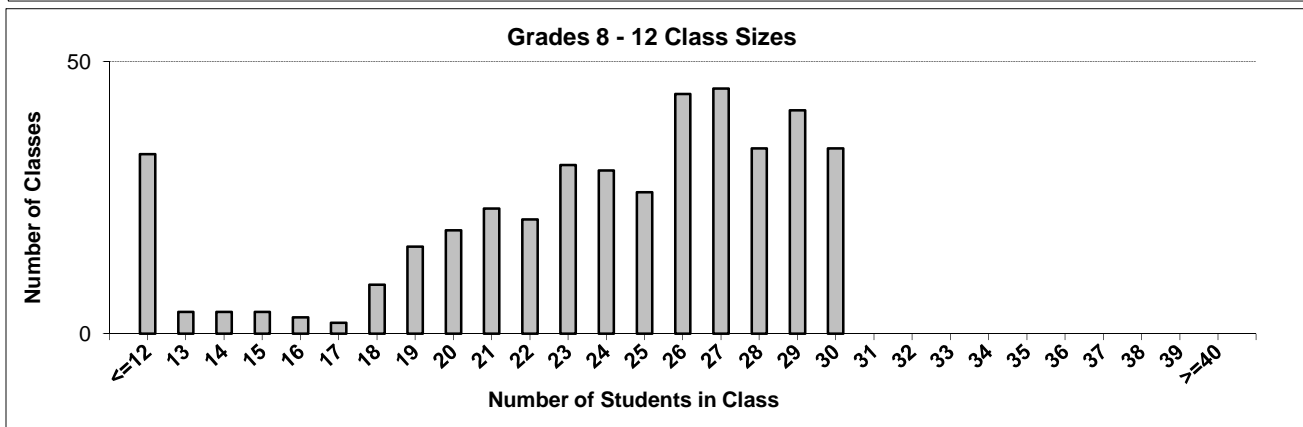
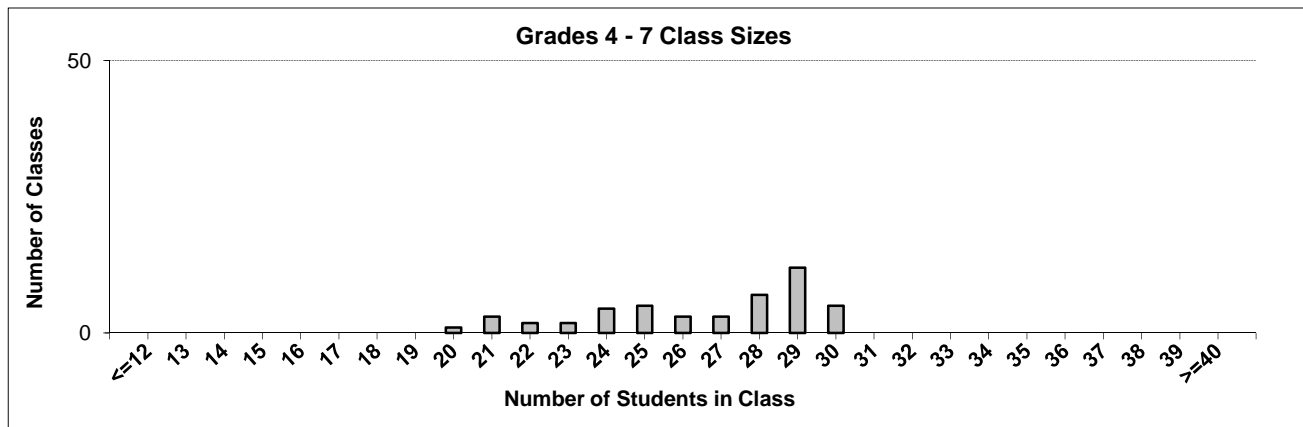
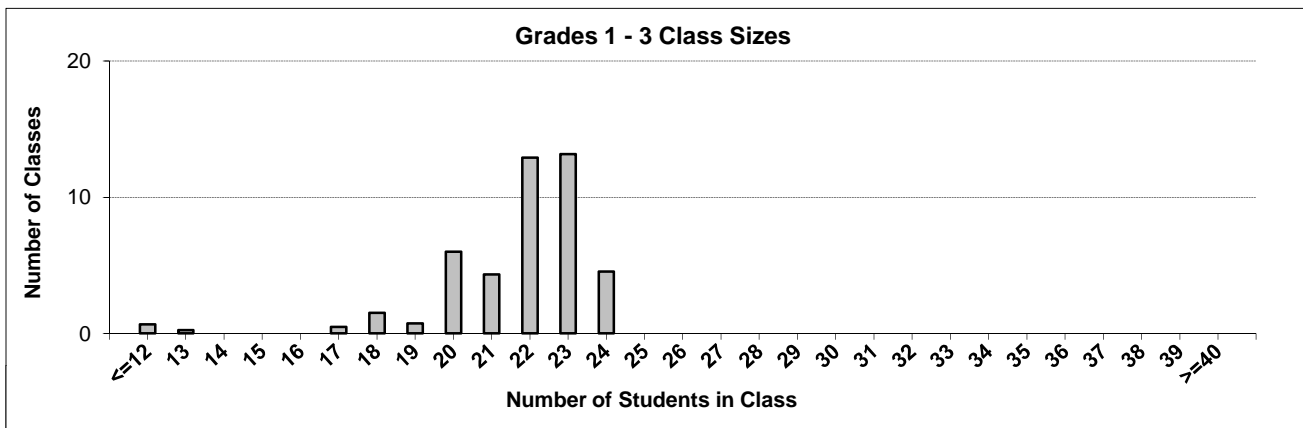
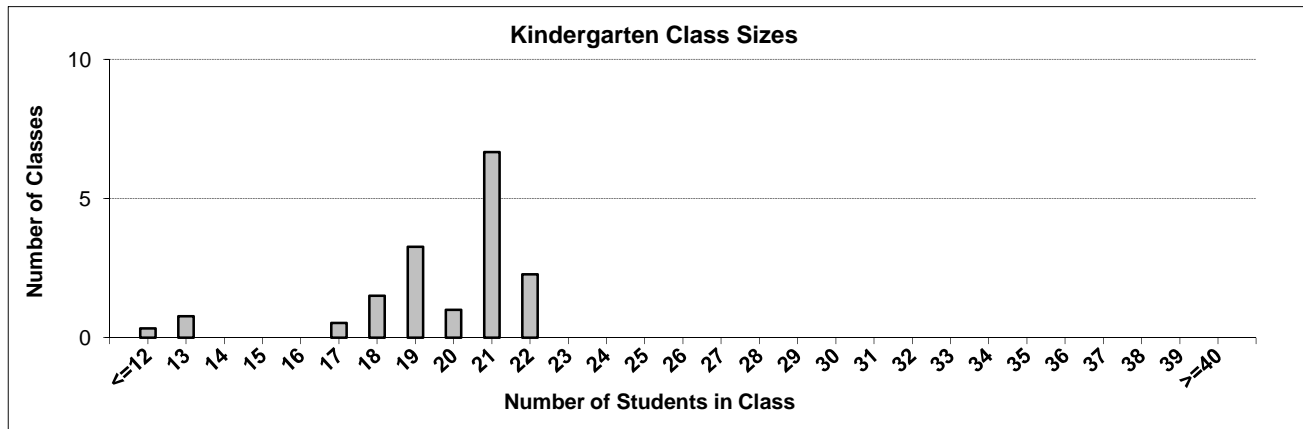
Ministry reports are available at <http://www.bced.gov.bc.ca/reporting/>

Contact the Business Intelligence Unit at educ.reportingunit@gov.bc.ca

District Class Sizes

048 Sea to Sky

Source: Class size data collection (as of October 15) from standard BC public schools.



District - Average Class Size

048 Sea to Sky

Source: Class size data collection (as of October 15) from standard BC public schools.

District - Average Class Size	Kindergarten	Grade 1 - 3	Grade 4 - 7	Grade 8 - 12
	19.7	21.7	26.5	23.3

Province - Average Class Size	Kindergarten	Grade 1 - 3	Grade 4 - 7	Grade 8 - 12
	19.0	21.1	25.4	23.3

Number of Reported Classes with Assigned Education Assistants	184
---	-----

Number of Reported Schools in District	14
--	----

Number of Reported Classes in District	531
--	-----

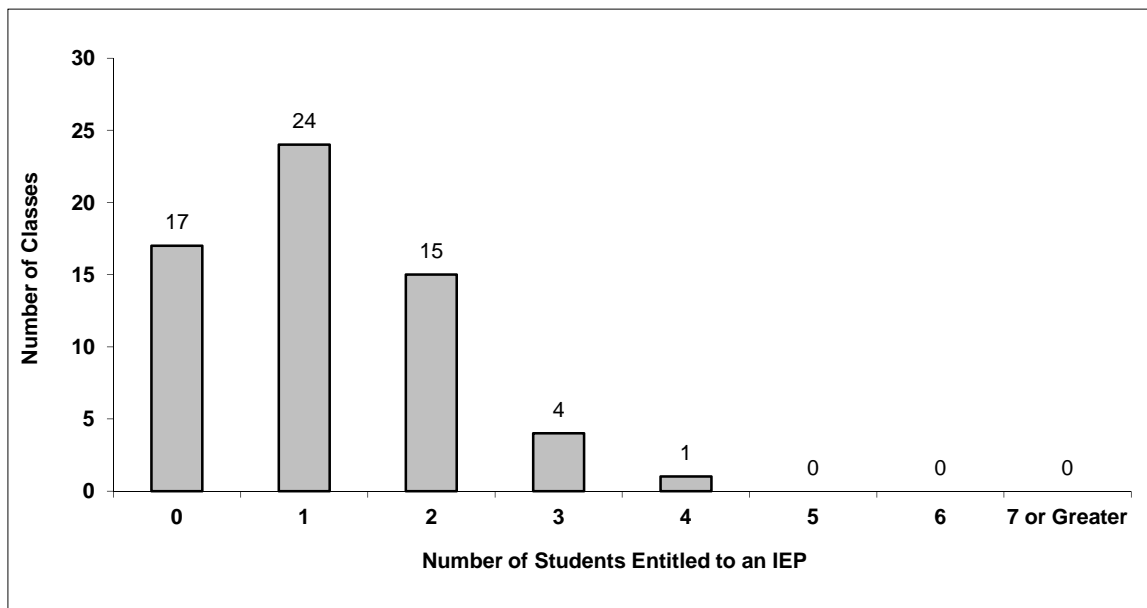
Number of Reported Classes in District with more than 30 Students	0
---	---

District - Students Entitled to an Individual Education Plan (IEP)

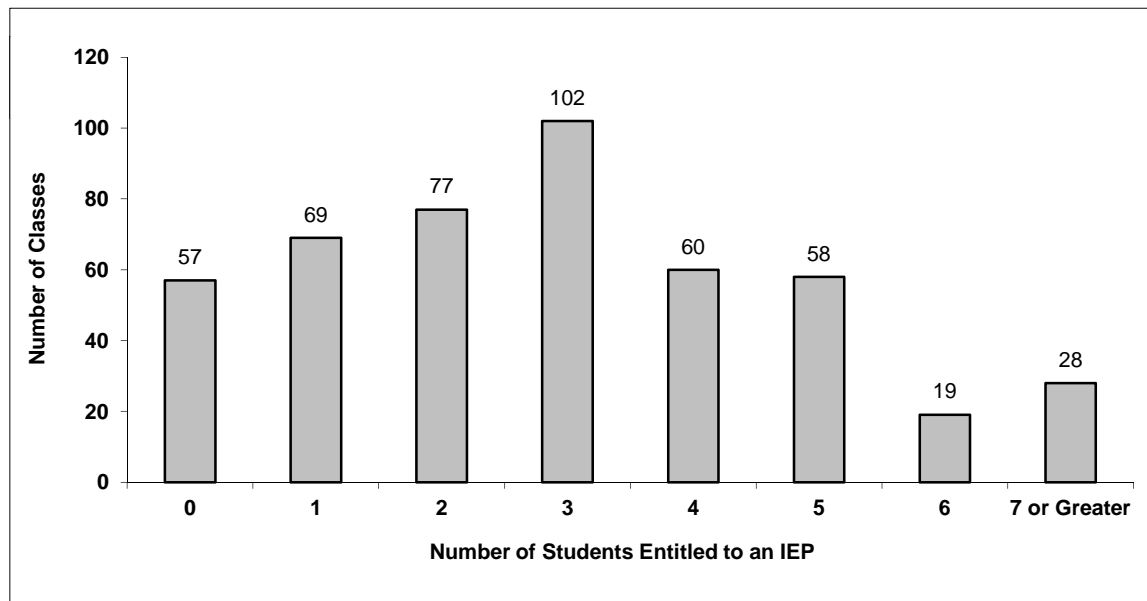
048 Sea to Sky

Source: Class size data collection (as of October 15) from standard BC public schools.

Grades K-3 - Number of Classes in District with 'X' Number of Students Entitled to an IEP



Grades 4-12 - Number of Classes in District with 'X' Number of Students Entitled to an IEP

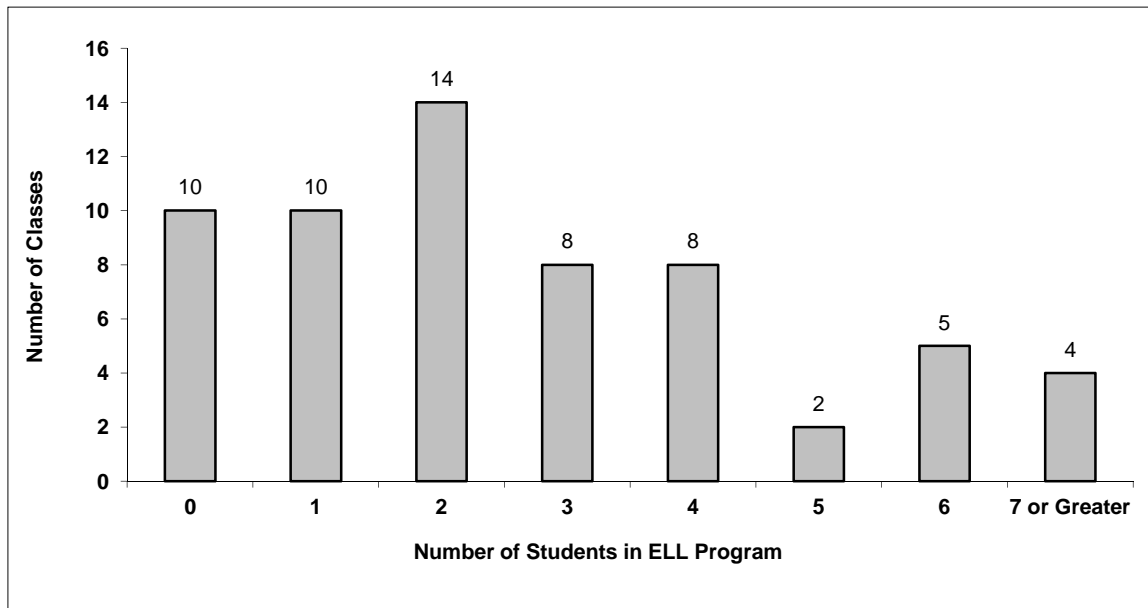


District - English Language Learners (ELL)

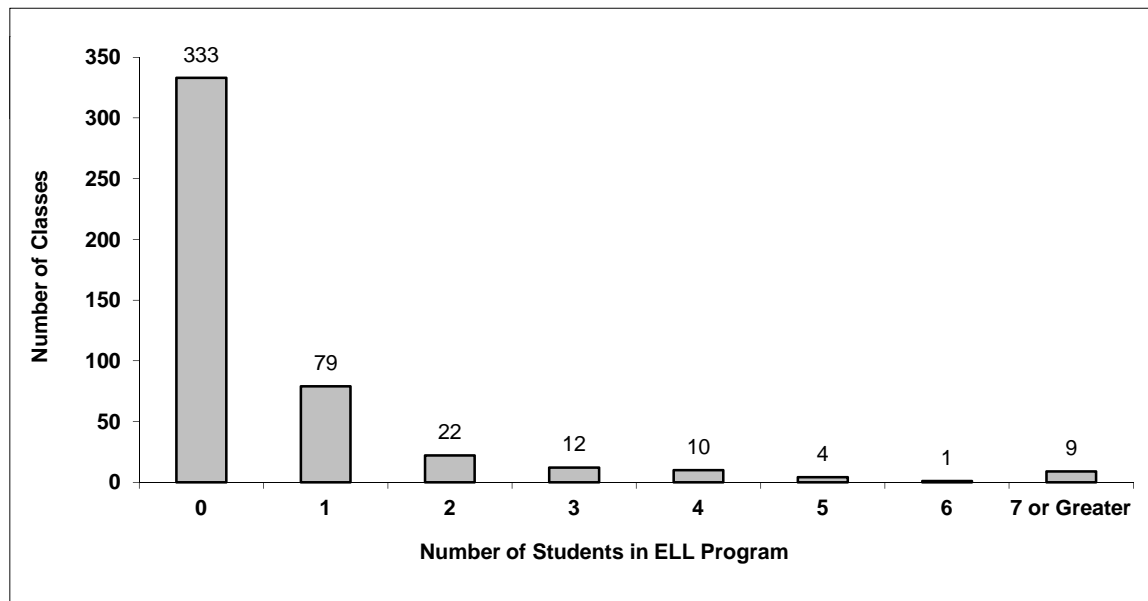
048 Sea to Sky

Source: Class size data collection (as of October 15) from standard BC public schools.

Grades K-3 - Number of Classes in District with 'X' Number of ELL



Grades 4-12 - Number of Classes in District with 'X' Number of ELL



048 Sea to Sky - Average Class Size by School

Source: Class size data collection (as of October 15) from standard BC public schools.

Ministry Code	School Name	Kindergarten	Grade 1 - 3	Grade 4 - 7	Grade 8 - 12
04848014	Blackwater Creek Elementary	9.0	9.0	-	-
04848023	Brackendale Elementary	21.5	23.8	28.7	-
04848016	Don Ross Secondary	-	-	-	24.8
04848011	Ecole Squamish Elementary	18.7	21.8	27.7	-
04848018	Garibaldi Highlands Elementary	21.1	22.0	28.8	-
04848004	Howe Sound Secondary	-	-	-	25.7
04848008	Mamquam Elementary	21.4	22.1	26.4	-
04848020	Myrtle Philip Community School	21.0	22.1	28.0	-
04848021	Pemberton Secondary	-	-	-	17.8
04848024	Signal Hill Elementary	19.0	21.3	24.9	-
04848025	Spring Creek Community School	19.6	22.4	26.8	-
04848012	Stawamus Elementary	13.0	18.4	22.0	-
04848019	Valleycliffe Elementary	19.0	21.0	21.9	-
04848022	Whistler Secondary	-	-	-	23.7

Glossary

Term	Definition / Notes
English Language Learners (ELL)	<ul style="list-style-type: none">• A program offered to students whose primary language(s) is/are other than English, and who may require additional services.
Grade	<ul style="list-style-type: none">• The assigned grade of a student on October 15.
K	<ul style="list-style-type: none">• Kindergarten
Number of Students	<ul style="list-style-type: none">• Student population is calculated by headcount.
Student	<ul style="list-style-type: none">• A person enrolled in a BC school. Student populations are calculated by headcount. Students include all adult and school-aged persons who are working toward a certificate of graduation.
Student Entitled to an Individual Education Plan	<ul style="list-style-type: none">• A student for whom an Individual Education Plan (IEP) must be designed under the Individual Education Plan order, Ministerial Order 638/95.